

# Police and Crime Plan 2021-2024 Monthly Performance Update

May 2024

*National and MSG positions are to 31 March 2024 (Essex Police data are to 31 May 2024).*



Version 1.4  
Produced June 2024  
Performance Analysis Unit, Research & Analysis Department, Essex Police  
Sensitivity: Official

# Executive Summary

- The Police and Crime Plan 2021-2024 was introduced in April 2021, with new measures that reflect the Essex Police, Fire and Crime Commissioner's (PFCC) strategic commitment to targeted prevention and early intervention. In December 2022, the Chief Constable of Essex Police and the Police, Fire & Crime Commissioner for Essex agreed that more measures should be included so a more holistic and rounded view of the Force's performance against the Police and Crime Plan could be provided.
- **Four of the twelve PFCC Priorities have been given a recommended grade of 'Good':** 2 (Reducing drug driven violence), 4 (Reducing violence against women and girls), 6 (Protecting rural and isolated areas), 7 (Dog Theft). **Seven have been given a recommended grade of 'Adequate'** and **one has been given a recommended grade of 'Requires Improvement':** 5 (Improving support for victims of crime).
- Grading has not changed since last month's report.
- Confidence (from the independent survey jointly commissioned and funded by Essex Police and PFCC) was at 76.1% for the 12 months to March 2024. This is a significant **increase** of 2.5 percentage points compared to the 12 months to March 2023 (73.5%).
- **There was a decrease in All Crime (-6.9%) and Rural Crime (-5.7%)** in the 12 months to May 2024 compared to the 12 months to May 2023. This reduction has been driven by changes to Home Office Counting Rules (HOCR) in relation to Stalking & Harassment, as well as a reduction in unique victims and **decrease** in incidents reported to the Force.
- **Business Crime increased by 9.3% for the 12 months to May compared to the 12 months to May 2023\***. This is due to an **increase** in Shoplifting offences. **Shoplifting levels are now higher than they were the year prior to COVID.**
- In the 12 months to May 2024, all Theft offences **rose** by 3.1% (1,433 **more**), compared to the 12 months to May 2023. This has primarily been driven by **increases** in Shoplifting (1,866 **more**), Theft of a Vehicle (495 **more**) and Residential Burglary (137 **more**).

## Executive Summary – continued (2)

- Essex experienced a **16.8% decrease (7,360 fewer)** in the number of offences with a repeat victim for the 12 months to May 2024 (36,521 offences) compared to the 12 months to May 2023 (43,881 offences). Except for August 2022, **the year-on-year change in repeat victimisation has been reducing each month since March 2022.\*** The number of individual repeat victims **decreased by 10.7% (2,360 fewer)** for the 12 months to May 2024 (19,670 individual victims) compared to the 12 months to May 2023 (22,030 individual victims). It is of note that any over-recording of Stalking & Harassment offences will impact both the number of repeat victims and the number of offences with a repeat victim.
- Stalking & Harassment offences comprise the largest volume of Violence Against Women & Girls offences (VAWG) and account for 19.2% of all Domestic Abuse investigations. There were **3,074 fewer Stalking & Harassment crimes recorded against females in the 12 months to May 2024 (11,311 crimes) compared to the 12 months to May 2023 (14,385 crimes).**
- **Violence Against the Person (VAP) offences committed against females decreased by 12.9% decrease (4,649 fewer)** in the 12 months to May 2024 compared to the 12 months to May 2023. There was also an **11.3% decrease (528 fewer) in the number of sexual offences committed against females** in these time periods. **Essex Police solved 13 fewer (-4.2%) sexual offences committed against females** in the 12 months to May 2024 compared to the 12 months to May 2023. The overall decrease has been driven by the above point (in relation to Stalking & Harassment), as well as a genuine reduction in offences being reported to the Force.
- Essex Police conducted **18 fewer OCG disruptions in the 12 months to March 2024 compared to the 12 months to March 2023\*\*.** The reduction is a change from an **increase** of 66 in the 12 months to December 2023.
- **There was a 2.3% decrease (20 fewer) in the number of those Killed or Seriously Injured (KSI) in Essex for the 12 months to May 2024 compared to the 12 months to May 2023.** It is of note that road traffic safety is the province of the Safer Essex Roads Partnership (SERP) which includes Essex Police, Essex County Fire & Rescue Service, Essex County Council, Southend on Sea Borough Council, Thurrock Council, National Highways, East of England Ambulance Service Trust, Essex and Herts Air Ambulance Service Trust, and The Safer Roads Foundation (Registered Charity).

Please note:

\* See comparison chart on slide 27 and data table in the appendices.

\*\* OCG disruption data are provided quarterly, data is to March 2024.

## Executive Summary – continued (3)

- Comparing High Harm<sup>\*</sup> offences recorded in Essex to the Force's Most Similar Group (MSG) by crimes per 1,000 population, Essex recorded the second lowest number of offences (out of eight police forces) for Other Sexual Offences, second lowest for Violence with Injury, fourth highest for Burglary Residential, and second highest for Rape and Robbery of Personal Property<sup>\*\*</sup>.
- Officer numbers were at 3,785 in May 2024, an **increase** of 15 over the last year. **Almost half of all Essex Police employees were female (48.4%) with female officers accounting for over a third of all officers (37.7%). However, Ethnic Minorities as a percentage of the workforce continues to fall**, with a **decrease** in overall numbers in May 2024 compared to 12 months ago; although this is not a statistically significant change.

**Please note:** Data is subject to change and figures reported previously might, in some cases, be reported differently in future months due to data validation processes and extraction from live databases. Essex Police regularly review these statistics to ensure the most accurate are reported.

Please note:

\* High Harm offences: Violence with Injury, Rape, Other Sexual Offences, Robbery of Personal Property and Burglary Residential

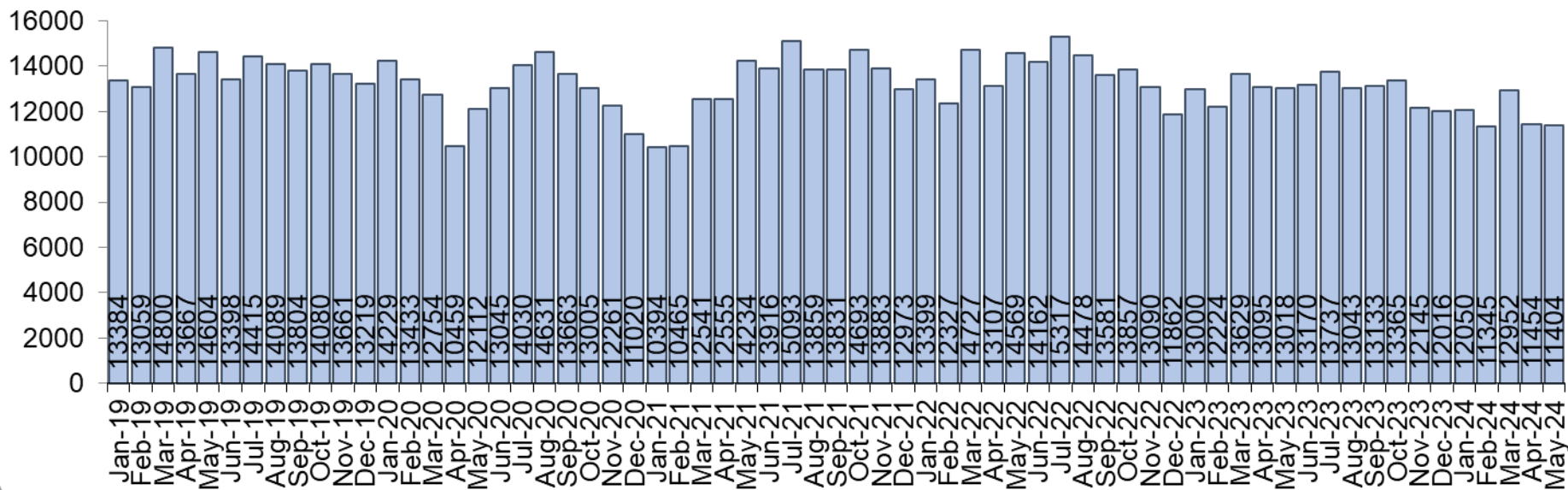
\*\* Data only available to March 2024.

# Priority 1 – Further investment in crime prevention

Grade: **Adequate**

Police Priority Indicators	12 months to Dec 2019	12 months to May 2023	12 months to May 2024	Number Difference 2023/24	% Difference 2023/24
Number of all crime offences	168,218	161,421	150,319	-11,102	-6.9

Force All Crime (excl. Fraud) offences



There was a **6.9% decrease** in All Crime in the 12 months to May 2024 compared to the 12 months to May 2023; this equates to 11,102 **fewer** offences. Essex recorded the third highest volume of offences per 1,000 population out of the eight forces in its MSG at 82.3, which is above the MSG average (78.7).

The number of Rape offences reported in Essex **fell** by 11.6% (281 **fewer**) in the 12 months to May 2024 (2,147) compared to the 12 months to May 2023 (2,428). There were 70 Rape offences charged in the 12 Months to May 2024 compared to 96 in the 12 Months to May 2023, a **decrease** of 26.

# Priority 1 – Further investment in crime prevention - continued

Grade: **Adequate**

Police Priority Indicators	12 months to Dec 2019	12 months to Mar 2023	12 months to Mar 2024	Number Difference 2023/24	% Difference 2023/24	Essex	MSG Ave	# diff.	Essex MSG Position
Harm (Crime Severity) Score* v. Most Similar Group of Forces (MSG) - All Crime	13.8	14.3	13.8	-0.5	-	13.8	12.7	1.1	6

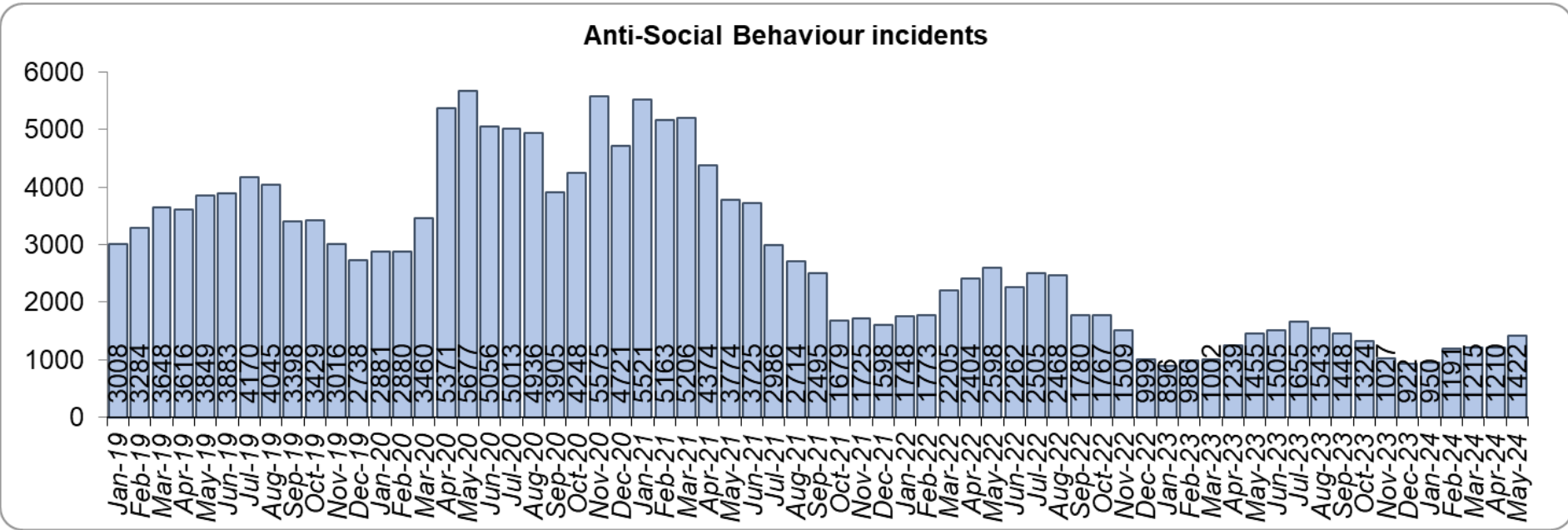
The All Crime Harm (Crime Severity) Score\* (13.8) **decreased** by 0.5 in the 12 months to March 2024 . Essex has the third highest Harm Score (out of eight forces) in its MSG and remains above the MSG average\*\* .

Please note:

\* Crime Severity Scores (as calculated by the Office for National Statistics) measure the ‘relative harm’ of crimes by taking into account both their volume and their severity. As national data are only available to March 2024, the score for the 12 months to March for the preceding year has been included.

\*\* iQuanta and Crime Severity Score data only available to March 2024.

Police Priority Indicators	12 months to Dec 2019	12 months to May 2023	12 months to May 2024	Number Difference 2023/24	% Difference 2023/24
Number of homicides	61	14	17	3	21.4
Number of Anti-Social Behaviour Incidents	41,975	18,868	15,412	-3,456	-18.3



**Three more Homicide were recorded for the 12 months to May 2024** compared to the 12 months to May 2023.

Essex experienced an 18.3% **decrease** (3,456 **fewer**) in Anti-Social Behaviour (ASB) incidents for the 12 months to May 2024 compared to the 12 months to May 2023.

Lower volumes mean higher volatility, but this does not mean there is an associated issue.

Police Priority Indicators	12 months to Dec 2019	12 months to May 2023	12 months to May 2024	Number Difference 2023/24	% Difference 2023/24
Number of CCC 101 calls	293,049	214,950	189,886	-25,064	-11.7
Number of Combined 101 Calls*	-	-	63,199	-	-
Number of online reports	24,468	36,952	41,556	4,604	12.5

From the 2<sup>nd</sup> April 2024 there have been some organisational changes in the Contact Management Command. FCR and Resolution Centre have become the Contact and Control Centre (CCC). CCC\* received 189,886 101 calls for the 12 months May 2024, an 11.7% decrease (25,064 fewer) compared to 12 months to May 2023 (214,950 calls).

The Combined number of 101 calls\*\* for the month of May 2024 was 63,199. This includes CCC, Assessment and Investigation Centre (A&I) and Interactive Voice Response (IVR) Calls.

The number of online reports increased by 12.5% (4,604 more) in the 12 months to May 2024 compared to the 12 months to May 2023.

**Please Note:**

\* The implementation of a new Target Operating Model has resulted in rationalisation of the call handling processes. The FCR and Resolution Centre have been renamed to Contact and Control Centre. Performance may be affected whilst staff training is completed and processes established. Data from previous periods are no longer directly comparable and is still being updated and refined to take account of the restructure. Please refer to the caveat on slide 2.

\*\* Data for the month of May 2024 only. Data for Combined 101 calls is only available back to July 2023. As such year-on-year comparisons and 12-month totals are not available.



# Priority 1 - Further investment in crime prevention - continued

Grade: **Adequate**

Police Priority Indicators	Month of Dec 2019	Month of May 2023	Month of May 2024	Difference 2023/24	% Difference 2023/24
Percentage of CCC 101 Calls Abandoned	34.0	35.7	27.3	-8.5	-
Percentage of Combined 101 Calls Abandoned	-	-	31.9	-	-

Police Priority Indicators	Dec 2019	May 2023	May 2024	Number Difference 2023/24	% Difference 2023/24
CCC average wait time (mm:ss)	07:00	10:14	08:38	-01:36	-

Police Priority Indicators	12 months to Dec 2019	12 months to Mar 2023	12 months to Mar 2024	Number Difference 2023/24	% Difference 2023/24
Percentage of people who have confidence in policing in Essex (internal survey)	64.7	73.5	76.1	2.5	-
<i>Confidence Interval</i>	1.1	1.0	1.0	0.0	

**27.3% of CCC 101 calls were abandoned in the month of May 2024, a decrease of 8.5 percentage points compared to May 2023 (35.7%).**

The average CCC wait time in May has decreased by just over one and a half minutes when compared to May 2023.

These improvements are the result of an enhanced focus on performance and resourcing of Contact and Control Centre (CCC), previously force control room.

**Confidence experienced a significant increase to 76.1% in the 12 months to March 2024 compared to the 12 months to March 2023 (an increase of 2.5 percentage points). Confidence is 11.4% points higher when compared against the 12 months to December 2019 (64.7%).**

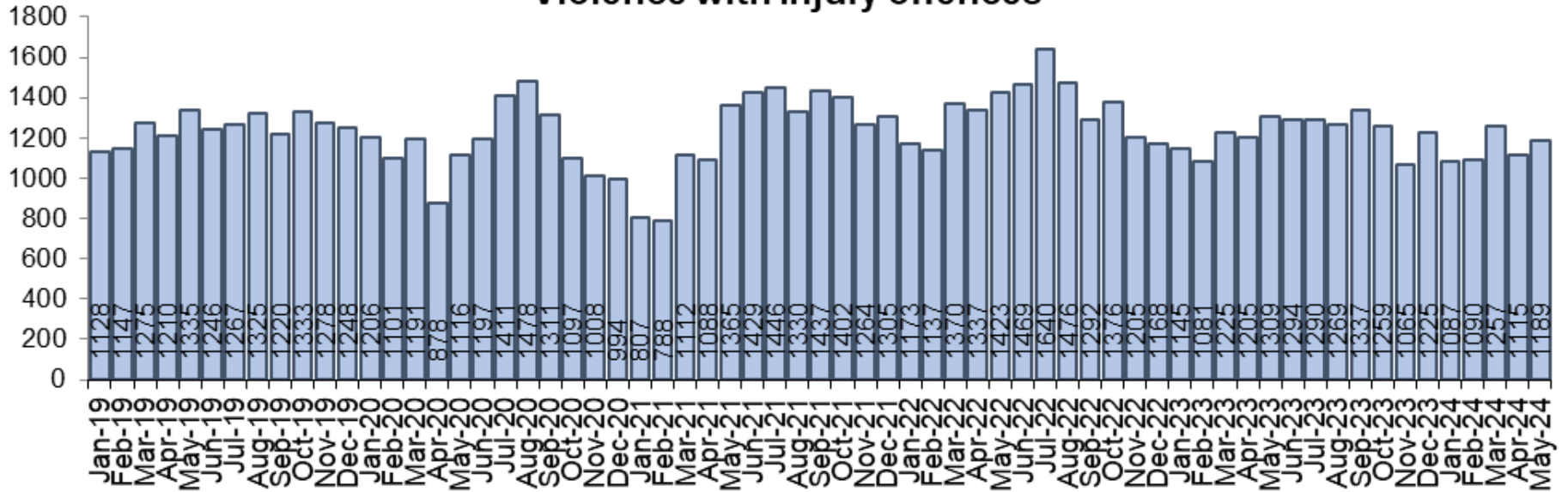
Eight of nine measures for this priority are improving, however the All Crime Harm (Crime Severity) Score remains above the MSG average, therefore a grade of Adequate is recommended.

# Priority 2 – Reducing drug driven violence

Grade: **Good**

Police Priority Indicators	12 months to Dec 2019	12 months to May 2023	12 months to May 2024	Difference 2023/24	% Difference 2023/24
Drug related homicides*	10	1	0	-1	-
Number of Violence with Injury offences	15,360	15,591	14,477	-1,114	-7.1

### Violence with Injury offences



Essex experienced **no drug related homicides** in the 12 months to May 2024 compared to one in the 12 months to May 2023.

There was a 7.1% **decrease** (1,114 **fewer** offences) in Violence with Injury (VWI) offences for the 12 months to May 2024 compared to the 12 months to May 2023.

## Priority 2 – Reducing drug driven violence – continued

Grade: **Good**

Police Priority Indicators	12 months to Dec 2019	12 months to May 2023	12 months to May 2024	Difference 2023/24	% Difference 2023/24
Number of knife-enabled crime offences	1,638	1,593	1,517	-76	-4.8
Number of Organised Criminal Group disruptions*	99	421	403	-18	-4.3

Police Priority Indicators	12 months to Mar 2023	12 months to Mar 2024	Number Difference 2023/24
Percentage of people who have confidence Essex Police and the organisations they work with are dealing with drug crime (internal survey)***	57.6	59.4	1.8
<i>Confidence Interval</i>	1.2	1.2	0.0

There was a **4.8% decrease (76 fewer)** in the number of knife-enabled crime offences in the 12 months to May 2024 compared to the 12 months to May 2023.

Essex conducted **4.3% fewer Organised Crime Group (OCG) disruptions (18 fewer)** for the 12 months to March 2024\* compared to the 12 months to March 2023. Despite the decrease, overall disruptions remain high compared to previous periods.

Confidence that **Essex Police and partners are dealing with drug crime** (from the independent survey jointly commissioned and funded by Essex Police and PFCC) **is at 59.4%** for the 12 months to March 2024. This is an **increase** from 57.6% in the 12 months to March 2023, but this is not significant.

Despite OCG disruptions **deteriorating**, Drug related homicides, Violence with Injury offences and Knife enabled crimes have **improved**. Therefore, a grade of Good is recommended.

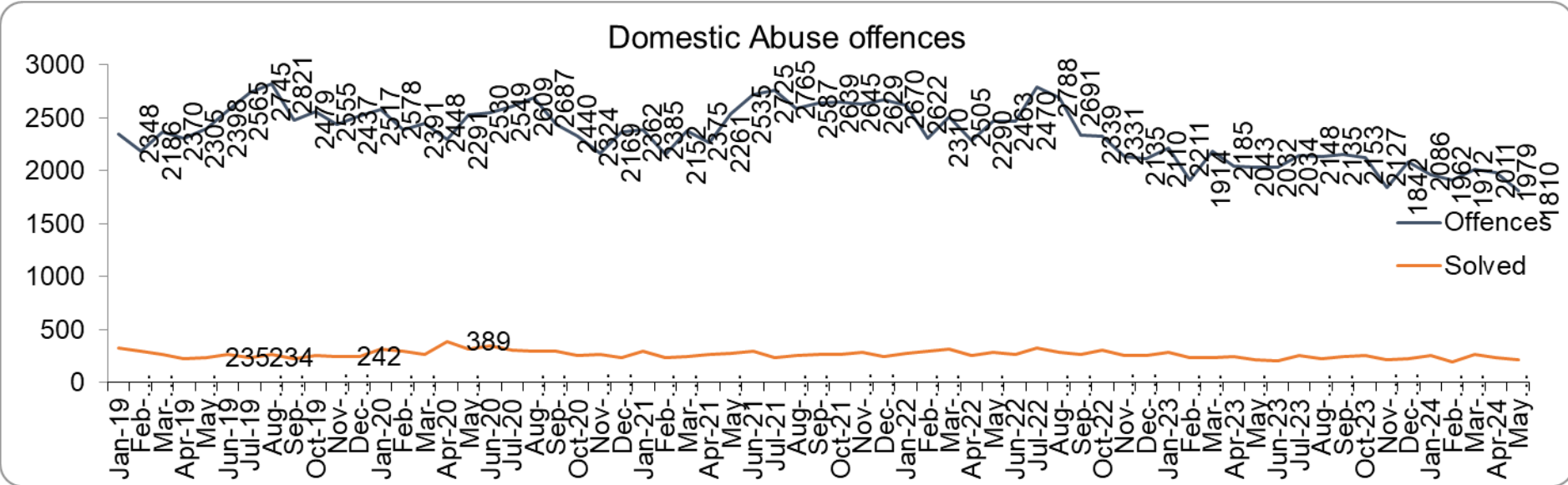
Please note:

\*OCG data is updated quarterly. Most recent data is up to March 2024.

# Priority 3 - Protecting vulnerable people and breaking the cycle of domestic abuse

Grade: **Adequate**

Police Priority Indicators	12 months to Dec 2019	12 months to May 2023	12 months to May 2024	Number Difference 2023/24	% Difference 2023/24
Number of Domestic Abuse offences	29,726	27,249	24,199	-3,050	-11.2
Number of Domestic Abuse offences solved	3,005	3,155	2,766	-389	-12.3
Repeat victims of DA*	7,730	8,078	6,994	-1,084	-13.4



Essex experienced an **11.2% decrease (3,050 fewer)** in the number of recorded Domestic Abuse (DA) offences for the 12 months to May 2024 compared to the 12 months to May 2023\*\*. It is of note that Stalking & Harassment offences account for about a fifth (19.2%) of all Domestic Abuse investigations and changes to counting rules have led to a reduction in number of offences recorded as Stalking & Harassment.

Essex Police **solved 12.3% fewer (389) DA offences** for the 12 months to May 2024 compared to the 12 months to May 2023. The proportion of DA offences solved has increased since February 2024.

## Priority 3 - Protecting vulnerable people and breaking the cycle of domestic abuse - continued

Grade: Adequate

Essex police experienced a 7.3% decrease (460 fewer) Domestic Abuse offences in the three months to May 2024 compared to the three months to May 2023. There were 6.8% more (45) Domestic Abuse Solved in the three months to May 2024 compared to the three months to May 2023.

There were 21,140 unique victims of DA in the 12 months to May 2024 compared to 21,898 the previous year; this is a reduction of 3.5% (758 fewer). Furthermore, there were 1,084 fewer repeat victims of DA in the 12 months to May 2024 compared to the 12 months to May 2023 (13.4% less).

Please note:

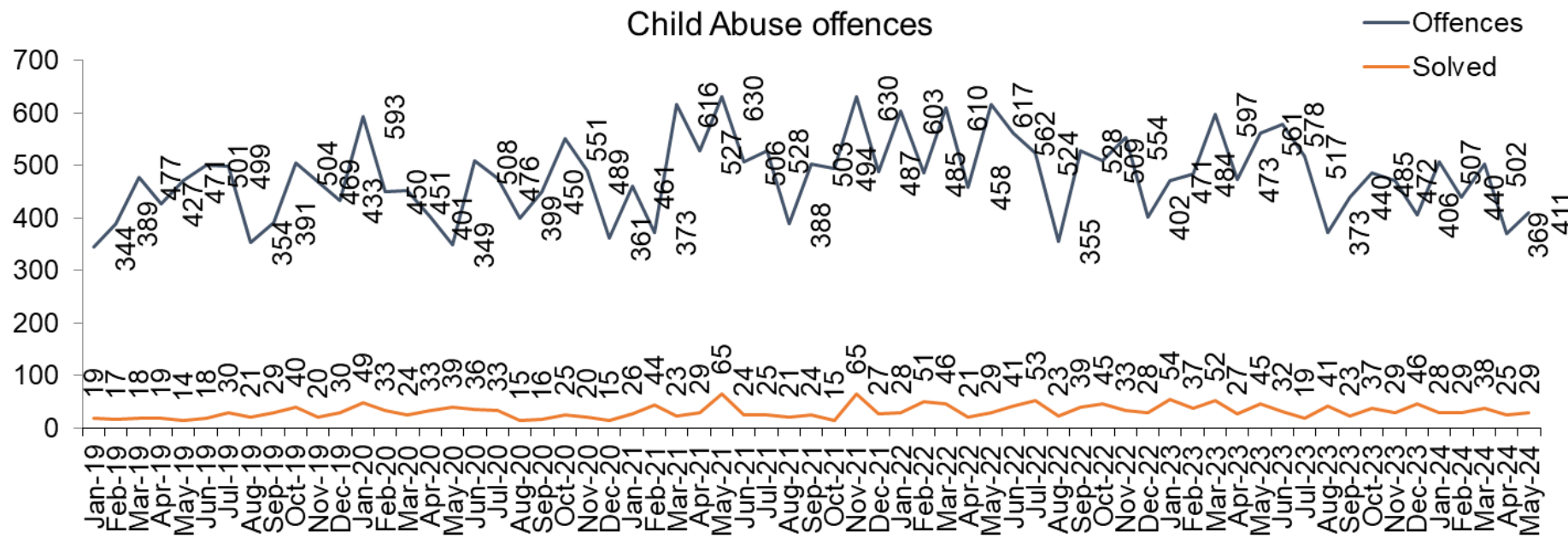
\* A repeat victim is someone who has been named as a victim for more than one crime within a 12-month period; to mitigate the fact that multiple crimes can be associated with the same incident, additional crimes with the same victim on the same date are not counted. ***Please be aware that in previous reports the number of incidents with a repeat victim was incorrectly detailed rather than the number of repeat victims. This error has now been corrected. It is of note that this would not have affected the recommended grade for this Priority: the performance for both the number of repeat victims and repeat offences follows the same pattern.***

\*\* Data may differ to the tables in the appendices depending on the date of data collection as corrections are often made to Domestic Abuse incidents.

# Priority 3 - Protecting vulnerable people and breaking the cycle of domestic abuse - continued

Grade: **Adequate**

Police Priority Indicators	12 months to Dec 2019	12 months to May 2023	12 months to May 2024	Difference 2023/24	% Difference 2023/24
Number of Child Abuse offences	5,259	6,020	5,500	-520	-8.6
Number of Child Abuse offences solved	275	477	376	-101	-21.2



Essex Police solved 101 fewer (21.2%) child abuse offences for the 12 months to May 2024 compared to the 12 months to May 2023, whilst there was an 8.6% decrease (520 fewer) in offences for the same comparison period.

# Priority 3 - Protecting vulnerable people and breaking the cycle of domestic abuse - continued

Grade: **Adequate**

Police Priority Indicators	12 months to Dec 2019	12 months to May 2023	12 months to May 2024	Number Difference 2023/24	% Difference 2023/24
NRM referrals (Modern Slavery)*	98	234	332	98	41.9
Number of Domestic Violence Protection Notices**	169	145	181	36	24.8
Number of Domestic Violence Protection Orders**	169	127	156	29	22.8

Police Priority Indicators	12 months to Dec 2019	12 months to Mar 2023	12 months to Mar 2024	Number Difference 2023/24	% Difference 2023/24
Percentage of people who have confidence that the policing response to protecting children and vulnerable people is improving (internal survey)	83.2	78.6	80.8	2.2	-
<i>Confidence Interval</i>	1.0	1.0	0.9	-0.1	

There were 332 Modern Slavery referrals made in the 12 months to May 2024 compared with 234 in the 12 months to May 2023 (98 more).

**The number of Domestic Violence Protection Notices (DVPN) issued increased by 24.8%** (36 more notices) in the 12 months to May 2024 compared to the 12 months to May 2023. 29 more (+22.8%) Domestic Violence Protection Orders (DVPO) were issued in the 12 months to May 2024 compared to the 12 months to May 2023.

Confidence that the policing response to protect children and vulnerable people (from the independent survey jointly commissioned and funded by Essex Police and PFCC) is at 80.8% (results to the 12 months to March 2024). Compared to year ending March 2023, confidence has significantly increased by 2.2 percentage points.

Six of the nine metrics for this priority improved in the 12 months to May 2024 compared to the 12 months to May 2023: DA offences, Repeat victims of DA, Child Abuse offences, DVPNs, DVPOs and Confidence. Due to the decrease in the number of solved Domestic Abuse and Child Abuse investigations, however, a grade of Adequate is recommended.

## Priority 3 - Protecting vulnerable people and breaking the cycle of domestic abuse - continued

Grade: Adequate

Please note from previous slide:

- \* The number of Modern Slavery referrals made to the National Referral Model are only available from April 2019 due to a change in the method of recording. A year-on-year comparison for the 12 months to December 2019 is therefore not possible.
- \*\* DVPNs are the first stage of the process, and DVPO the second. An officer issues a DVPN which has to go to court to become a DVPO. There are always fewer orders than notices as a result, as on some occasions the notices are not approved.



Police Priority Indicators	12 months to Dec 2019	12 months to May 2023	12 months to May 2024	Number Difference 2023/24	% Difference 2023/24
Number of violence against the person (including stalking & harassment offences) against females***	35,418	36,035	31,386	-4,649	-12.9
Number of sexual offences against females***	3,811	4,654	4,126	-528	-11.3
Number of sexual offences against females solved***	203	306	293	-13	-4.2

Essex Police recorded a **12.9% decrease (4,649 fewer)** in the number of **VAP offences committed against females** in the 12 months to May 2024 compared to the 12 months to May 2023. Where gender is detailed, over half of victims of Violence Against the Person (VAP) offences are identified as female\* (54.8%). 3.7% of offences (2,197 offences) had no gender recorded\*\*.

Stalking & Harassment offences comprise the largest volume of VAP offences at 29.8% in the 12 months to May 2024. There was a 21.4% **decrease in Stalking & Harassment crimes recorded against females** in the 12 months to May 2024 (11,311 crimes) compared to the 12 months to May 2023 (14,385 crimes).

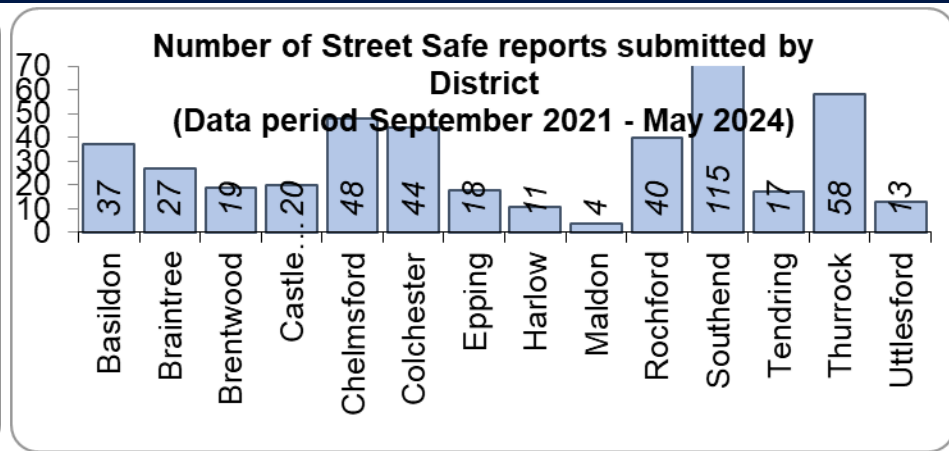
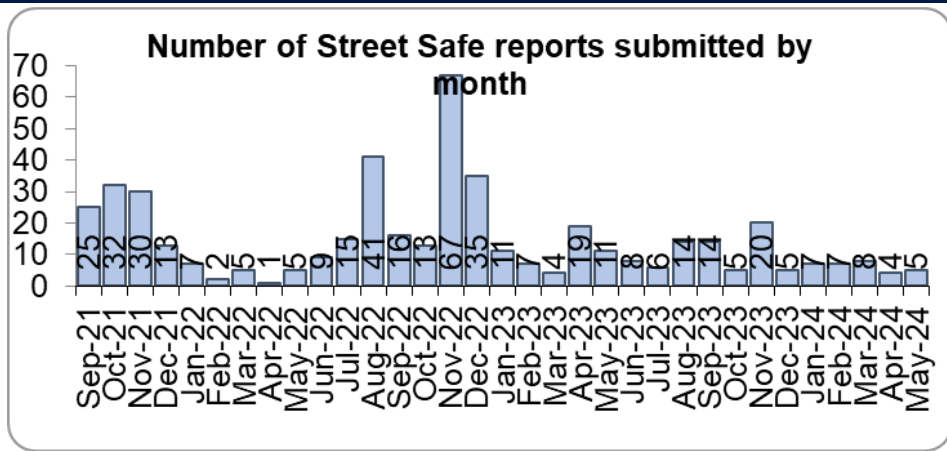
There was an **11.3% decrease (528 fewer)** in the number of **Sexual Offences committed against females** in the 12 months to May 2024 compared to the 12 months to May 2023. Essex Police solved 13 **fewer** (-4.2%) of these offences in the 12 months to May 2024 compared to the 12 months to May 2023.

Please note:

\* Officer defined gender.

\*\* Not Recorded also includes records where gender is unknown or unspecified.

\*\*\* Please see the appendices for tables detailing Offences, Solved Outcomes and Solved Rates% for Violence against the Person and Sexual offences (by crime type) split by gender.



Police Priority Indicators	12 months to Mar 2023	12 months to Mar 2024	Number Difference 2023/24
Percentage of females who feel safe walking alone in their area after dark (internal survey)*	44.5	45.0	0.5
<i>Confidence Interval</i>	1.5	1.5	0.0

StreetSafe reporting enables members of the public, particularly women and girls, to pin-point locations where they feel unsafe or have felt unsafe and identify why that location made them feel unsafe. StreetSafe was introduced into Essex as part of the government’s strategy to tackle Violence against Women and Girls (VAWG).

In May 2024, five reports were submitted in Essex. In total, 471 reports have been submitted for the county since implementation.

45.0% of females feel safe walking alone in their area after dark (from the independent survey jointly commissioned and funded by Essex Police and PFCC) for the 12 months to March 2024 compared to 74.4% of males. This is stable compared to the 12 months to March 2023.

Essex Police regularly reports to the national VAWG Taskforce and HMICFRS in respect of its performance, its action plan to tackle VAWG, and its internal conduct and behaviour, as well as to share best practice and innovation.

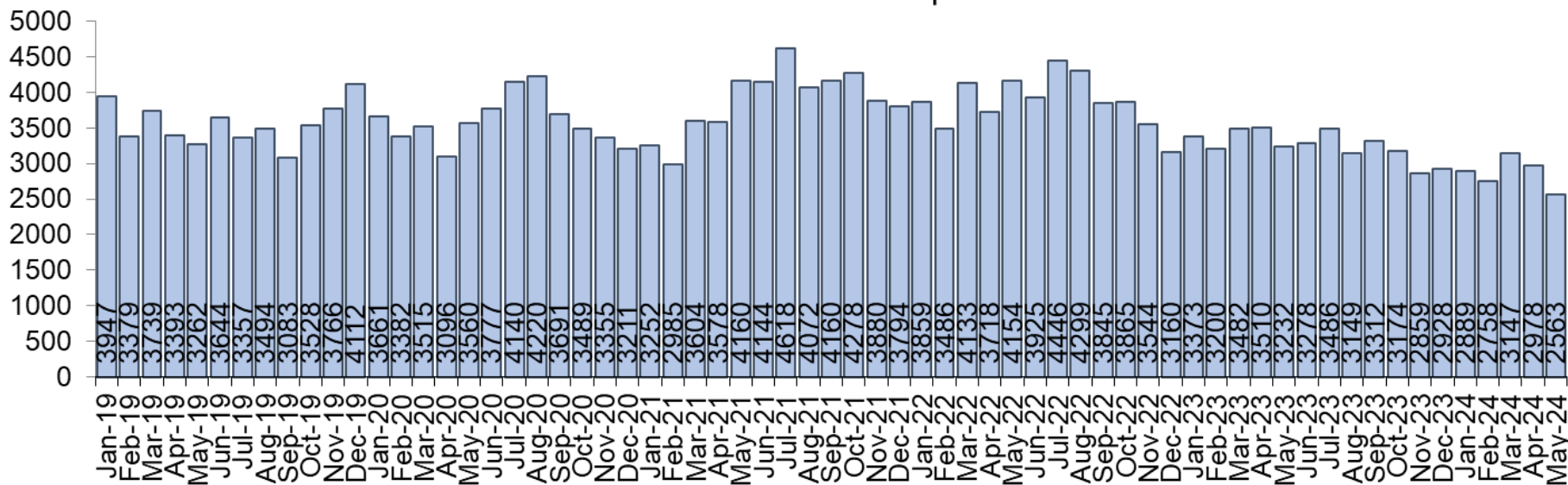
Essex Police encourage reporting and are working to gain a better understanding of this type of offence. There has been a **decrease** in Violence Against the Person offences and Sexual Offences against females compared to last year. There has also been a **decrease** in the number of sexual offences solved. As such a grade of Good is recommended.

# Priority 5 – Improving support for victims of crime

**Grade:**  
**Requires Improvement**

Police Priority Indicators	12 months to Dec 2019	12 months to May 2023	12 months to May 2024	Number Difference 2023/24	% Difference 2023/24
Number of offences with a repeat victim*	42,704	43,881	36,521	-7,360	-16.8
Average days taken to investigate High Harm offences**	44.2	51.8	67.7	15.9	-
Number of referrals to Victim Support	41,068	28,148	25,661	-2,487	-8.8

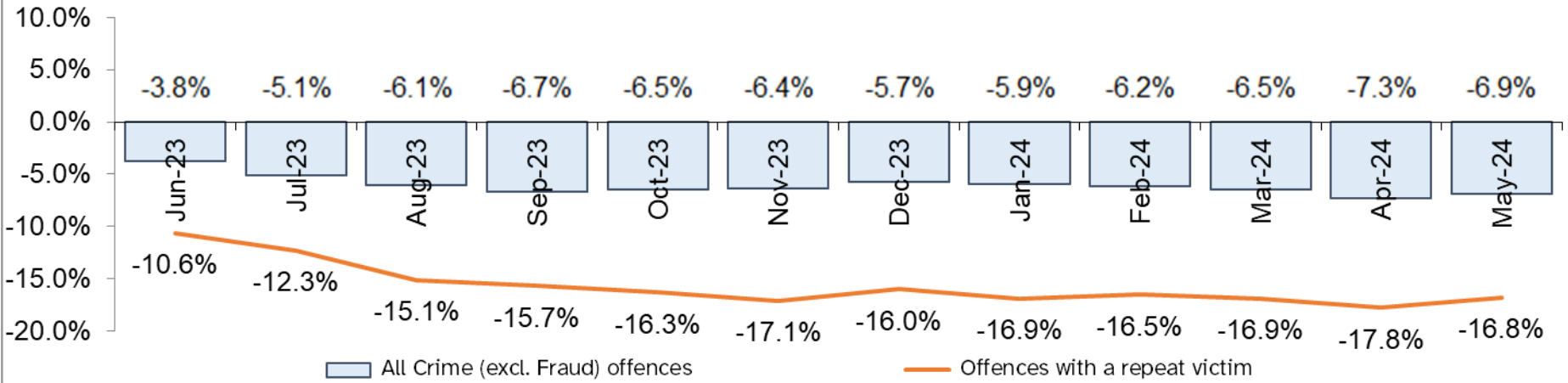
Number of offences with a repeat victim



Essex Police recorded a **16.8% decrease (7,360 fewer)** in the number of offences with a repeat victim for the 12 months to May 2024 (36,521 offences) compared to the 12 months to May 2023 (43,881 offences).\* There has been a decrease in the number of repeat victims year-on-year in every month since December 2022.

The average number of days taken to investigate High Harm offences **increased** by 15.9 days for the month of May 2024 (67.7 days) compared to the month of May 2023 (51.8 days).

Month on month percentage differences (previous 12 months)



The number of **individual repeat victims decreased by 10.7%** (2,360 fewer) for the 12 months to May 2024 (19,670 individual victims) compared to the 12 months to May 2023 (22,030 individual victims).

There was an **8.8% decrease** (2,487 fewer) in the number of referrals to Victim Support in the 12 months to May 2024 compared to the 12 months to May 2023. It should be noted that this is likely due to the decrease in overall offence numbers. However, the **proportion** of victims who received a referral to victim support was stable in the 12 months to May 2024 (17.1%) compared to in the 12 months to May 2023 (17.4%).

Please note:

\* This metric details how many crimes had a repeat victim rather than the number of individual people who are repeat victims of crime. A repeat victim is someone who has been named as a victim for more than one crime within a 12-month period; to mitigate the fact that multiple crimes can be associated with the same incident, additional crimes with the same victim on the same date are not counted.

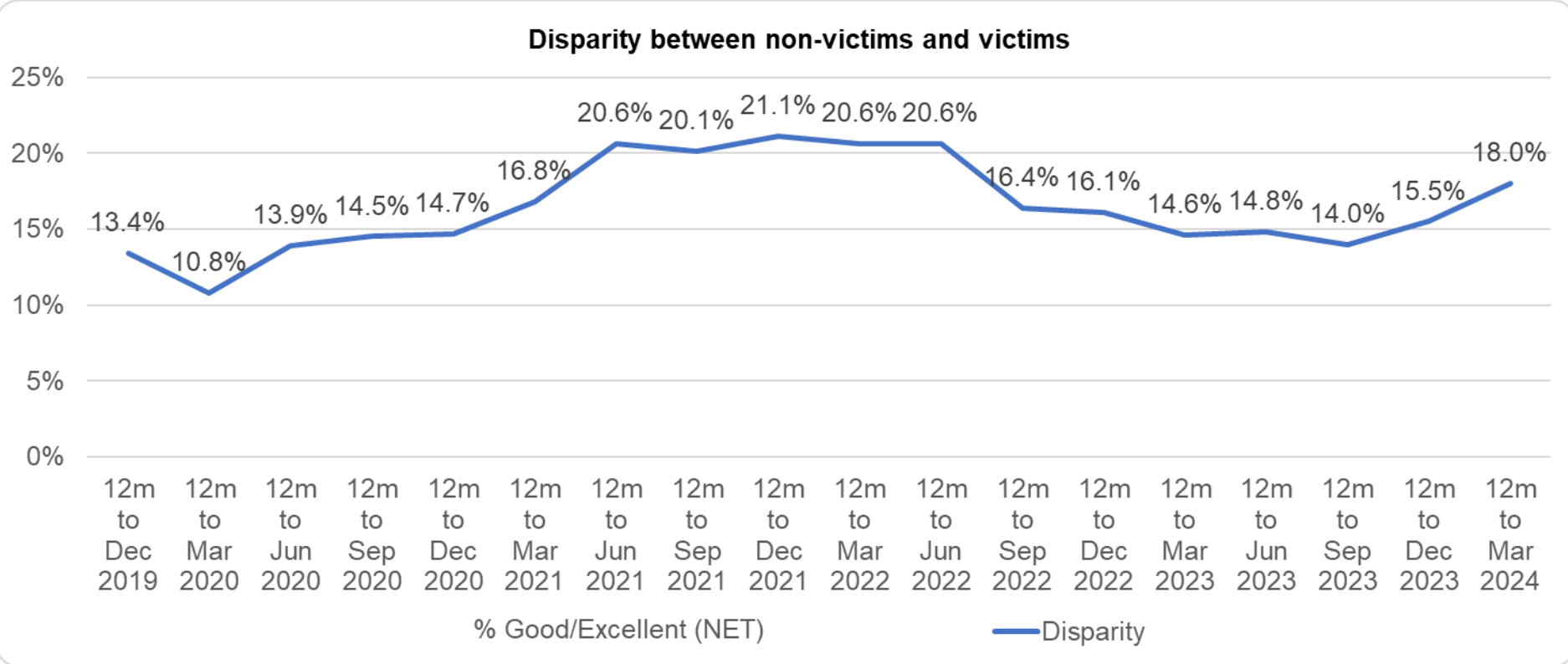
\*\* Data is the average for May only for the last two years.

Police Priority Indicators	12 months to Dec 2019	12 months to Mar 2023	12 months to Mar 2024	Number Difference 2023/24	% Difference 2023/24
Percentage of people who have confidence in policing in Essex (internal survey) Non Victims	66.1	75.5	78.3	2.9	-
<i>Confidence Interval</i>	1.1	1.0	1.0	0.0	
Percentage of people who have confidence in policing in Essex (internal survey) Victims	52.7	60.9	60.3	-0.6	-
<i>Confidence Interval</i>	3.5	3.0	3.1	0.1	
Percentage disparity between victims and non-victims	13.4	14.6	18.0	3.4	-

**Confidence among victims (from the independent survey jointly commissioned and funded by Essex Police and PFCC) is at 60.3%** (results to the 12 months to March 2024). This is 18.0 percentage points lower than confidence of non-victims for the same period (78.3%), compared to the gap of 14.6 percentage points over the same period last year. The disparity has **increased** by 4.6 percentage points compared to the 12 months to December 2019 (13.4%).

Compared to year ending March 2023 **confidence in the local police amongst victims is stable**, however, confidence for Non-victims **significantly increased** by 2.9 percentage points.

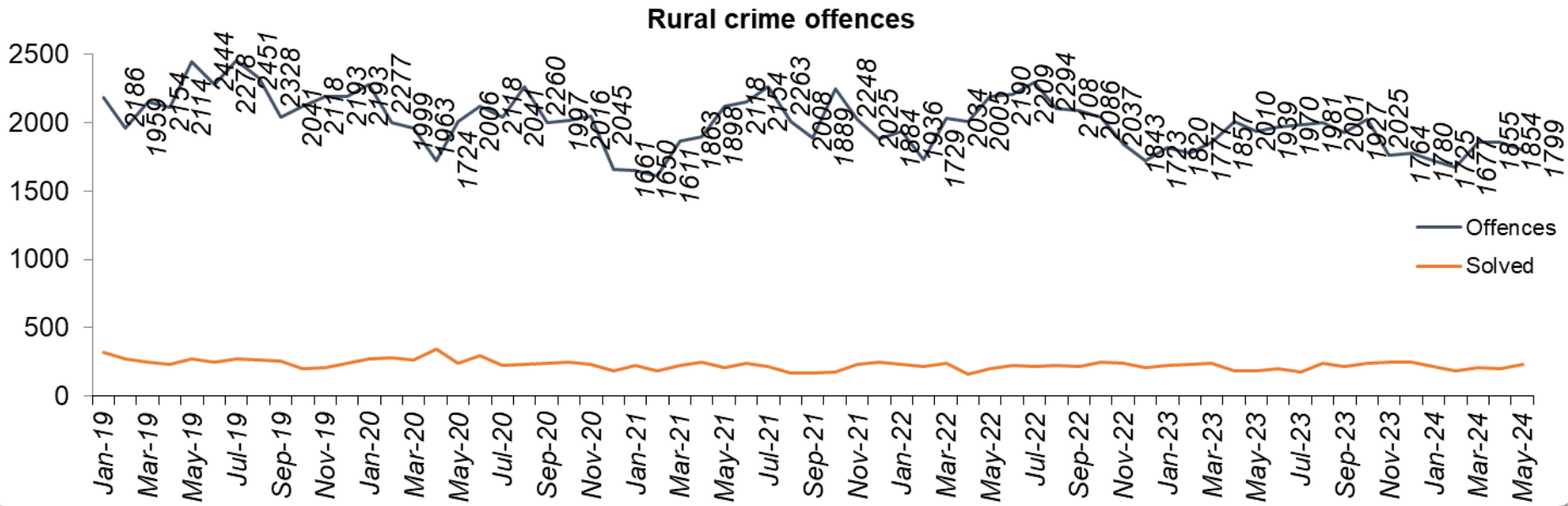
Please note that the Victim Engagement Portal – whereby victims can self-serve to check the progress of their investigations – went live in December 2023, which we anticipate will provide richer insight into victim confidence in future.



There is a significant disparity of 18.0 percentage points between Victims and Non-victims, (60.3% vs. 78.3%) in the 12 months to March 2024. This is an **increase** of 3.4% compared to the same period last year (16.4%).

Whilst victim confidence is stable and the number of repeat victims has **decreased** in the 12 months to May 2024 compared to last year, the average number of days taken to investigate high harm offences and the number of referrals to Victim Support have **deteriorated** substantially when compared to May 2023. With two of the six measures **deteriorating**, a grade of Requires Improvement is recommended.

Police Priority Indicators	12 months to Dec 2019	12 months to May 2023	12 months to May 2024	Difference 2023/24	% Difference 2023/24
Number of rural crime offences	26,459	23,703	22,358	-1,345	-5.7
Number of rural crime offences solved	3,047	2,638	2,609	-29	-1.1



Rural Crime offences\* **decreased** by 5.7% (1,345 fewer offences) in the 12 months to May 2024 compared to the 12 months to May 2023. During this period, All crime **decreased** by 6.9%.

Essex Police solved 1.1% **fewer** (a **decrease** of 29) Rural Crime offences for the 12 months to May 2024 compared to the 12 months to May 2023. This is proportionally higher.

The proportion solved is slightly higher in the 12 months to May 2024 (11.7%) compared to the 12 months to May 2023 (11.1%).

Police Priority Indicators	12 months to Dec 2019	12 months to May 2023	12 months to May 2024	Number Difference 2023/24	% Difference 2023/24
Harm (Crime Severity) Score* for rural crime	8.7	8.3	8.1	-0.2	-

The Rural Crime Harm (Crime Severity) Score\*\* was 8.1 for the 12 months to May 2024; this is a decrease of 0.2 when compared to the 12 months to May 2023 and lower than the All-Crime Harm Score in Essex (13.8) which decreased by 0.5 in the 12 months to March 2024\*.

Please note:

\*Rural crime data makes use of the 2011 Census data. The Rural Urban Classification from the 2021 Census has not yet been released by the ONS.

\*\*Crime Severity Scores (as calculated by the Office for National Statistics) measure the ‘relative harm’ of crimes by taking into account both their volume and their severity. National data are not available for crimes committed in rural areas, so it is not possible to measure against an MSG average; due to this, Essex Police data have been used rather than national data (which are to March 2024).



Police Priority Indicators	12 months to Dec 2019	12 months to Mar 2023	12 months to Mar 2024	Number Difference 2023/24	% Difference 2023/24
Percentage of people who have confidence in policing of rural areas in Essex (internal survey)	64.2	74.0	76.4	2.4	-
<i>Confidence Interval</i>	2.1	2.0	1.9	-0.1	

Confidence in rural policing (from the independent survey jointly commissioned and funded by Essex Police and PFCC) is at 76.4% (results to the 12 months to March 2024). **Compared to year ending March 2023 (74.0%), confidence in rural policing is stable (increasing by 2.4% points) and is in line with the current overall Essex average (rural and urban combined) of 76.1%.** Since 2019, confidence in Essex Police has **increased** in all rural areas across Essex.

Confidence in the local police in rural areas is in line with the rest of the county. With a small **decrease** in solved numbers relative to the **fall** in Rural Crime offences and a **decrease** the Severity Score, a grade of Good is recommended.

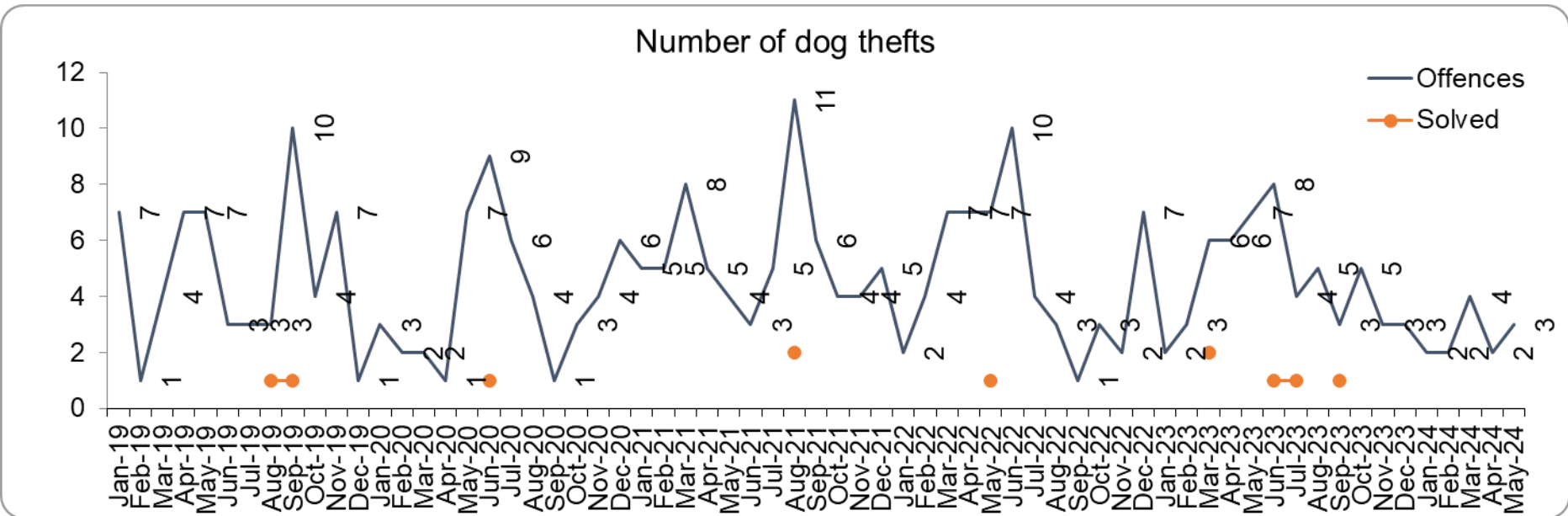
Please note:

\* The mainly Rural districts in Essex, as defined by the Office for National Statistics (ONS) are all within the North Local Policing Area: Braintree, Maldon, Tendring and Uttlesford.

# Priority 7 – Preventing dog theft

Grade: **Good**

Police Priority Indicators	12 months to Dec 2019	12 months to May 2023	12 months to May 2024	Number Difference 2023/24
Number of dog thefts*	57	54	44	-10.0
Number of dog thefts solved	2	3	3	0.0



Police Priority Indicators	12 months to Mar 2023	12 months to Mar 2024	Number Difference 2023/24
Percentage of people who have confidence Essex Police and the organisations they work with are dealing with dog theft (internal survey)**	61.5	66.3	4.8
<i>Confidence Interval</i>	1.4	1.3	-0.1

Ten **fewer** dog thefts were reported in Essex for the 12 months to May 2024 compared to the 12 months to May 2023 (44 v. 54). The number of dog thefts solved for the 12 months to May 2024 (three) is stable compared to the 12 months to May 2023 (three).

Confidence in how Essex Police and the organisations they work with are dealing with dog theft (from the independent survey jointly commissioned and funded by Essex Police and PFCC) is at 66.3% for the 12 months to March 2024, **confidence significantly increased compared to the 12 months to March 2023 (61.5%), with an increase of 4.8 percentage points.**

Due to the low and reducing number of thefts across the county (given the comparatively large population of Essex), along with relatively high confidence levels, a grade of Good is recommended.

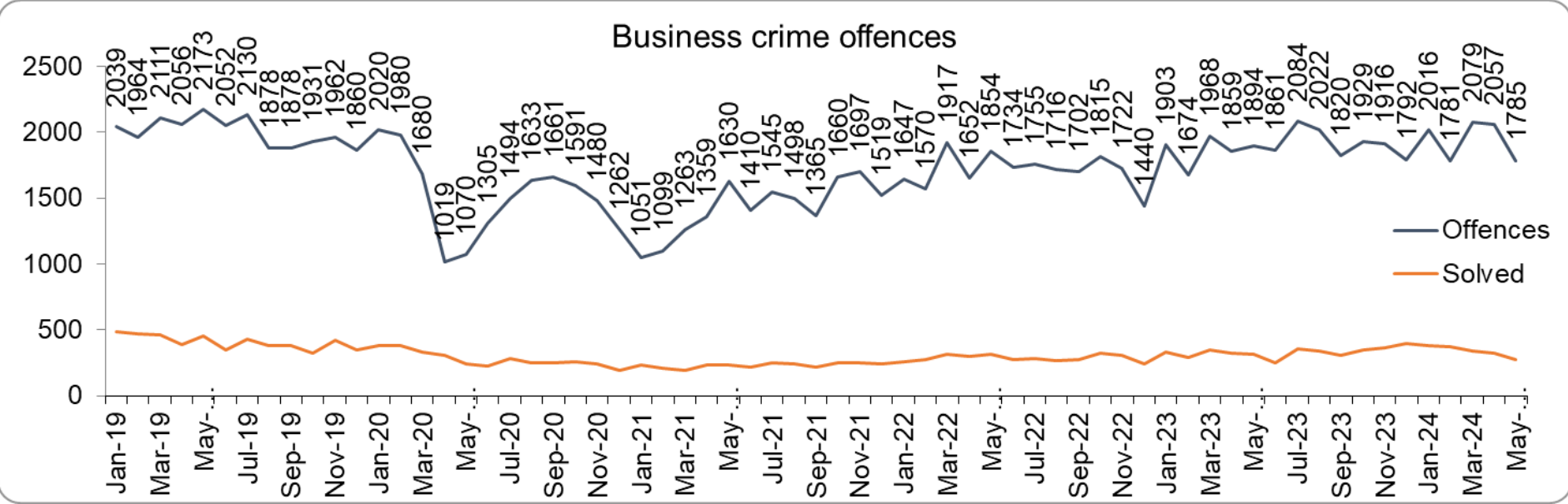
Please note:

\* This is number of thefts in which dogs were stolen, and not quantity of dogs stolen in each theft. Data are based on theft offence crimes and robbery offence crimes where the 'property code' is 'pet animal – dog' and the 'property status' is 'stolen' and/or 'stolen/recovered'.

# Priority 8 – Reducing business crime, fraud and cyber crime

Grade: **Adequate**

Police Priority Indicators	12 months to Dec 2019	12 months to May 2023	12 months to May 2024	Difference 2023/24	% Difference 2023/24
Number of Business Crime Offences	24,034	21,182	23,142	1,960	9.3
Number of Business Crime Offences solved	4,891	3,569	4,045	476	13.3



Business Crime offences include any notifiable crimes recorded with a victim which is an organisation; it does not include Fraud offences. All reports of Fraud are recorded by the National Fraud Intelligence Bureau (NFIB) rather than Essex Police. In the 12 months to May 2024, a total of 1,905 Fraud investigations were allocated to Essex Police by NFIB for investigation. For data on the number and type of Fraud investigations reported as being committed within the Essex Police area, please visit the [NFIB Fraud and Cyber Crime Dashboard](#).

Essex recorded a **9.3% increase (1,960 more)** in the number of Business Crime offences and a **13.3% increase (476 more)** in the number of these offences which were solved in the 12 months to May 2024 compared to the 12 months to May 2023.

## Priority 8 – Reducing business crime, fraud and cyber-crime - continued Grade: Adequate

Police Priority Indicators	12 months to Dec 2019	12 months to May 2023	12 months to May 2024	Difference 2023/24	% Difference 2023/24
Number of fraud offences related to business crime*	485	340	332	-8	-2.4
Total number of fraud offences	2,076	1,858	1,905	47	2.5

Police Priority Indicators	12 months to Mar 2023	12 months to Mar 2024	Number Difference 2023/24
Percentage of people who have confidence that the policing response to tackling cyber crime is improving (internal survey)**	48.8	45.3	-3.5
<i>Confidence Interval</i>	1.7	1.4	-0.3

Shoplifting accounts for approximately 52.3% of business crime. The volume of shoplifting offences in Essex has seen an **increase** of 18.2% (1,866 **more** offences) in the 12 months May 2024 compared to the same period the previous year. The volume of offences is now higher than pre-pandemic levels.

In the 12 months to May 2024, 3,030 shoplifting offences recorded a solved outcome, an **increase** of 31.9% on the same period the previous year. This is a proportionally greater **increase** than the **rise** in offence volumes (18.2%).

There is ongoing work with partners aiming to increase the reporting of business crime and to tackle prolific offenders, which has had a positive impact on the number of incidents reported.

There was a 2.4% **decrease** in the number of fraud offences related to Business Crime in the 12 months to May 2024 compared to the 12 months to May 2023: this equates to eight **fewer** offences.

Please note:

\* Fraud offences recorded on Athena where the victim is either an organisation or a person with the Business Victim flag.

## Priority 8 – Reducing business crime, fraud and cyber-crime - continued Grade: Adequate

Confidence that Essex Police are dealing with cyber-crime (from the independent survey jointly commissioned and funded by Essex Police and PFCC) is at 45.3% for the 12 months to March, remaining **stable** when compared to the 12 months to March 2023 (48.8%).

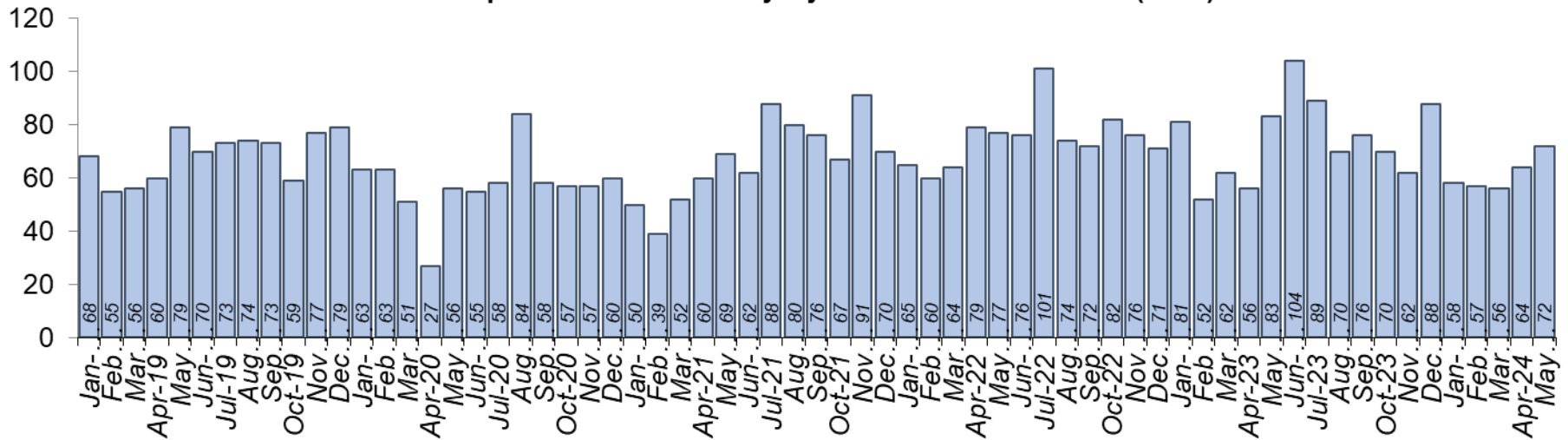
Three of the five metrics **deteriorated** when compared to the 12 months to March 2023 (Business Crime offences, All Fraud and confidence the police are dealing with Cyber Crime). The number solved has **increased** by a greater proportion and business-related fraud has **decreased**. A grade of Adequate is recommended.

# Priority 9 - Improving safety on our roads

Grade: **Adequate**

Police Priority Indicators	12 months to Dec 2019	12 months to May 2023	12 months to May 2024	Number Difference 2023/24	% Difference 2023/24	Essex (per 100 million km) Data to Dec 2022	MSG Ave (per 100 million km) Data to Dec 2022	# diff.	Essex MSG Position
All people killed or seriously injured (KSI) in road collisions	823	886	866	-20	-2.3	3.788	4.888	-1.100	4

**Force People Killed or Seriously Injured in Road Collisions (KSIs)**



Road traffic safety is the province of the Safer Essex Roads Partnership (SERP). SERP comprises representatives from Essex Police, Essex County Fire & Rescue Service, Essex County Council, Southend on Sea Borough Council, Thurrock Council, National Highways, East of England Ambulance Service Trust, Essex and Herts Air Ambulance Service Trust and The Safer Roads Foundation (Registered Charity). The aspiration of Essex Police and partners is 'Vision Zero', namely, to have no road deaths or serious injuries by 2040. The SERP Safety delivery plan sets out a structured programme of educational and engagement activity to address this and support behavioural changes.

There was a **2.3% decrease (20 fewer)** in the number of those Killed or Seriously Injured (KSI) in Essex for the 12 months to May 2024 compared to the 12 months to May 2023.

Rolling 12 months	12 months to Dec 2019	12 months to May 2023	12 months to May 2024	Number Difference 2023/24	% Difference 2023/24
KSI - All	823	886	866	-20	-2.3%
KSI - Fatalities	41	41	40	-1	-2.4%
KSI - Serious injuries	782	845	826	-19	-2.2%
Number of Collisions	774	806	782	-24	-3.0%

Essex Police recorded the fourth lowest number of casualties per 100 million vehicle kilometres (results to December 2022) in its Most Similar Group (MSG) of eight forces; which is below the MSG average. The latest national data was released in October 2023 (data to December 2022).

**Please note:**

Data is subject to change and figures reported previously might, in some cases, be reported differently in future months due to data validation processes and extraction from live databases. Essex Police regularly review these statistics to ensure the most accurate are reported.

Not all KSIs will result in a criminal offence, for instance where a fatal collision has been caused by bad weather or because of a medical episode suffered by the driver.



Police Priority Indicators	12 months to Dec 2019	12 months to May 2023	12 months to May 2024	Number Difference 2023/24	% Difference 2023/24
Number of driving under the influence of drink and/or drugs on Essex roads	3,312	2,311	2,274	-37	-1.6
<i>Number of driving under the influence of drink on Essex roads</i>	1,467	1,306	1,281	-25	-1.9
<i>Number of driving under the influence of drugs on Essex roads</i>	1,845	1,005	993	-12	-1.2
<i>Number of Failure to Provide samples</i>	399	334	338	4	1.2
Number of driving related mobile phone crime on Essex roads	2,269	1,897	1,940	43	2.3

Police Priority Indicators	12 months to Dec 2019	12 months to Mar 2023	12 months to Mar 2024	Number Difference 2023/24	% Difference 2023/24
Percentage of people who have confidence Essex Police and the organisations they work with policing the roads (internal survey)	68.2	66.0	68.8	2.9	-
<i>Confidence Interval</i>	1.1	1.1	1.1	0.0	

There was a **1.6% decrease (37 fewer offences) in drink/drug driving offences** for the 12 months to May 2024 compared to the 12 months to May 2023. There was a **1.9% decrease (25 fewer offences) in drink driving** and a **1.2% decrease (12 fewer offences) in drug driving**.

The number of Failure to Provide samples **increased** by 1.2% (four **more**) in the 12 months to May 2024 compared to the same period last year.

There was a **2.3% increase (43 more offences) in the number of driving related mobile phone offences** recorded for the 12 months to May 2024 compared to the 12 months to May 2023.

Confidence in Essex Police and organisations with whom they police the roads (from the independent survey jointly commissioned and funded by Essex Police and PFCC) is at 68.8% (results to the 12 months to March 2024). Confidence in the local police and organisations they work with significantly **increased** by 2.9 percentage points when compared to year ending March 2023 (66.0%).

In the last 12 month rolling period we have seen a **decrease** in KSIs, an **increase** in the number of driving related mobile phone offences and an **improving** confidence picture in relation to roads policing. Until there is a more sustained improvement, a grade of Adequate is recommended.

## Priority 10 – Encouraging volunteers and community support

Grade: **Adequate**

Watch Group	Membership types	May 23	May 24	Number Difference 2023/24	% Difference 2023/24
		No. of members	No. of members		
Allotment	Individuals, existing bodies e.g., allotment committees and interested partners.	51	64	13	20.3
Business	Individual businesses, business branches, existing representative bodies e.g., Business Crime Reduction Partnerships, Business Improvement District groups, pro-active site management and interested partners.	104	101	-3	-3.0
Caravan	Individuals, related businesses and interested partners.	60	67	7	10.4
Dog	Individuals, related businesses and interested partners.	2,814	3,296	482	14.6
Essex Horse Rider Volunteers	Individual Horse Riders	6	73	67	91.8
Farm and Rural	Individuals, farm related businesses, rurally located businesses and interested partners.	767	762	-5	-0.7
Heritage (inc. Faith Watch)	Individuals, businesses inc. museums, art galleries, faith groups etc. and interested partners.	200	203	3	1.5
Marine	Individuals, related businesses and interested partners.	62	66	4	6.1

Citizens in Policing and the Special Constabulary play an integral part in supporting Essex Police.

Since last month's report, there are now 79 **more** Dog and four **more** Horse group members. However, there are two **fewer** Business, seven **fewer** Farm and Rural and two **fewer** Heritage group members.

There has been a 12.3% **increase** (568 **more**) in members across the eight watch groups in 12 months to May 2024 (4,632 members) in comparison to 12 months to May 2023 (4,064 members).

# Priority 10 – Encouraging volunteers and community support - continued

Grade: **Adequate**

Police Priority Indicators	12 months to Dec 2019	12 months to May 2023	12 months to May 2024	Number Difference 2023/24	% Difference 2023/24
Number of Police Support Volunteers	117	100	76	-24	-24.0
Number of Active Citizens	60	51	43	-8	-15.7
Number of Volunteer Police Cadets**	296	220	158	-62	-28.2
Number of Volunteer Cadet Leaders**	90	86	62	-24	-27.9
Number of Cadet Units**	10	13	11	-2	-15.4

There has been a 28.2% decrease (62 fewer) in Volunteer Police Cadets (VPCs) in 12 months to May 2024 (158 cadets) when compared to 12m to May 2023 (220 cadets) and a 27.9% decrease (24 fewer) in Volunteer Cadet Leaders in 12 months May 2024 (62 leaders) compared to 12 months May 2023 (86 leaders). In addition, there are 76 Police Support Volunteers and 43 Active Citizens within Essex Police across the county, a total of 119 Volunteers in 12 months to May 2024, a decrease of 32 volunteers compared to the previous year. In the 12 months to May 2023 there were 100 Police Support Volunteers and 51 Active Citizens within Essex Police across the county, a total of 151 Volunteers. These volunteers also are part of the Strategic Co-ordination Group and support their Local Community Policing Teams with local events.

Over the past 12 months Essex Police have focused on leader recruitment to stabilise some units at risk and seek to re-open the three closed units - Chelmsford, Braintree & Uttlesford and Castle Point. As a result, the Chelmsford Unit has re-opened with 6 new leaders and 18 cadets. There were plans to also re-open Braintree & Uttlesford and Castle Point in June 2024, but due to the strong governance and vetting processes we rightly implement to safeguard children, we have had a succession of the new leaders fail vetting. This has set us back slightly, but we have new leaders in the pipeline and both units will hopefully re-open in September 2024. That will bring us back to a position of having all cadet units back open.

We also plan to take on 66 new cadets across the units in September 2024, when the new Cadet term starts. Then hopefully another 40 cadets in Dec 2024, once the new units are stabilised.

Please note:

\* Neighbourhood Watch data is updated every 6 months. Data only available to February 2024.

\*\* Data to December 2023. Two units have merged, Chelmsford and Uttlesford and Brentwood and Epping, so we now have 11 units. Of these three are suspended due to not enough leader coverage in that area, they are Castle Point & Rochford, Chelmsford, Braintree/Uttlesford. There is currently a Cadet Leader recruitment campaign running to increase Leader numbers and open all 11 units.

# Priority 10 – Encouraging volunteers and community support - continued

Grade: **Adequate**

Police Priority Indicators	Dec 2019	Feb 2023	Feb 2024	Number Difference 2023/24	% Difference 2023/24
Number of Neighbourhood Watch - Co-ordinators	-	2,342	2,420	78	3.3
Number of Neighbourhood Watch - Members	-	79,449	88,704	9,255	11.6
Police Priority Indicators	12 months to Dec 2019	12 months to May 2023	12 months to May 2024	Number Difference 2023/24	% Difference 2023/24
Number of Specials	519	300	249	-51	-17.0
Police Priority Indicators			12 months to Mar 2023	12 months to Mar 2024	Number Difference 2023/24
Percentage of people who feel there are good opportunities for those who want to volunteer to assist policing and reduce crime in Essex (internal survey)*			54.0	57.8	3.8
			<i>Confidence Interval</i>	1.1	1.1
					0.0

Essex Watch Liaison Officers continue to work with Neighbourhood Watch (NHW) to offer crime and fraud prevention advice.\* There has been a 3.3% **increase** (78 **more** Co-ordinators) in NHW Co-ordinators in February 2024 (2,420) compared to February 2023 (2,342). There has also been an 11.6% **increase** (9,255 **more** members) NHW members in February 2024 (88,704) compared to February 2023 (79,449). The Special Constabulary headcount is 249 (as of 31 May 2024). This is down 17.0% (51 **fewer**) compared to May 2023.

Confidence that there are good opportunities for volunteers to assist policing and reduce crime in Essex (from the independent survey jointly commissioned and funded by Essex Police and PFCC) is at 57.8% for the 12 months to March 2024, which is a **significant improvement** compared to the 12 months to March 2023. Confidence has **increased** each quarter since Q4 2021/22 (45.1%).

In September 2023, Essex had the second largest Special Constabulary in the country\*\*. Despite a **fall** in volunteer numbers, both watch group membership and confidence have **improved**. As such, a grade of Adequate is recommended.

Please note:

\*\* As of September 2023. The latest National Police Workforce Statistics were published in January 2024 and are updated bi-annually. [Police workforce England and Wales statistics - GOV.UK \(www.gov.uk\)](https://www.gov.uk/government/statistics/police-workforce-england-and-wales-statistics)

Police Priority Indicators	Dec 2019	May 2023	May 2024	% Pt. Difference 2023/24
Ethnic Minority employees: percentage of total workforce*	3.53	4.10	3.98	-0.12
• % of all Police**	2.99	4.08	4.07	-0.01
• % of all Staff (excluding PCSOs)**	3.67	4.17	3.90	-0.27
• % of all PCSOs**	2.59	0.00	0.00	0.00
• % of all Specials**	6.51	5.19	4.82	-0.37

There has been a **slight decrease of 0.12% points in the proportion of ethnic minority employees** in May 2024 (255) compared to May 2023 (266); this equates to 11 **fewer** employees.

In the 12 months to May 2024 259 new officers took their oaths to the King and started their Essex Police careers. The new officers pledged their commitment to police with the consent of every community at a time when the Force is welcoming **more** new colleagues from a range of different backgrounds. Over the same period, 244 officers left their positions, leading to an overall **increase** of 15 officers over the last year.

Please note:

\* Ethnic minority employees as a percentage of the total workforce.

\*\* Ethnic minority employees as a percentage of type of employee.

Police Priority Indicators	Apr - Dec 2019	Apr - May 2023	Apr - May 2024	Number Difference 2023/24	% Difference 2023/24
<b>Officers</b>					
• Sickness (Average days lost per person)	6.87	1.27	1.61	0.34	26.8
• Vacancies (Full Time Employee)	-21.07	-52.71	-32.16	-20.55	-39.0
• Vacancies (%)	-0.65	-1.40	-0.86	0.54	-
<b>Staff</b>					
• Sickness (Average days lost per person)	7.72	1.25	1.52	0.27	21.6
• Vacancies (Full Time Employee)	-204.13	-286.30	-246.25	-40.05	-14.0
• Vacancies (%)	-9.16	-12.03	-10.61	1.42	-
<b>PCSOs</b>					
• Sickness (Average days lost per person)	8.37	1.72	2.02	0.30	17.4
• Vacancies (Full Time Employee)	-0.91	-6.11	-7.57	1.46	23.9
• Vacancies (%)	-0.84	-6.17	-7.72	-1.55	-

The average days lost per person for sickness **increased** by 26.8% for officers, 17.4% for PCSOs and by 21.6% for staff in the 12 months to May 2024 compared to the 12 months to May 2023. Vacancies for full time officers **decreased** by 20.55 and for full time staff by 40.05.\* PCSO vacancies **increased** (1.46) over the 12 months to May 2024 compared to the 12 months to May 2023.

Ethnic minorities are underrepresented and declining compared to Essex's population (11.2%). Officer and Staff vacancies have **decreased**. Officer, staff and PCSO sickness is **deteriorating**. For these reasons, a grade of Adequate is recommended.

Please note:

\* The decrease in employee vacancies is due to a fall in the FTE vacancies and not due to an increase in the number of people employed.

## Priority 12 – Increasing collaboration

Grade: **Adequate**

Police Priority Indicators	12 months to Dec 2019	12 months to May 2023	12 months to May 2024	Number Difference 2023/24	% Difference 2023/24
School Visits	-	638	704	66	10.3
Programmes Delivered	-	1,417	1,572	155	10.9
Audience Numbers	209,265	126,256	135,177	8,921	7.1
School Visits*		12 months to May 2023	12 months to May 2024	Number Difference	% Difference
All schools		1,071	1,133	62	5.8%
Primary		720	663	-57	-7.9%
Secondary		276	325	49	17.8%
Alternative Provision		36	55	19	-
Special		17	49	32	-
6th Form/College		22	26	4	-
Education Outreach		0	15	15	-

The data in this section is provided by Essex County Fire and Rescue Service as part of the Joint Essex Fire and Police Education in Schools Programme (2022). Except for the types of programmes delivered, school visit data has been provided up to May 2024. There has been a 7.1% **increase** (8,921 **more**) in audience numbers in the 12 months to May 2024 (135,177) compared to the 12 months to May 2023 (126,256).

1,133 school visits at 704 unique schools were conducted in the 12 months to May 2024. 58.5% of these were at primary schools. Over the last 12 months the number of visits to unique schools and the number of programmes delivered have **increased** compared to the same period last year by 10.3 % and 10.9%, respectively.

Essex Fire and Police Joint Education Team (JET) delivered 27 Knife Crime Awareness sessions and 14 Gangs Awareness sessions to 1,135 students in Braintree, Colchester, Chelmsford, Uttlesford, Southend, Thurrock and Tendring during the national Op Sceptre (knife crime) week of action in May. The JET have great working relationships with the VVU and Police Crime Prevention leads, evidenced by this collaborative piece of work.

The number of school visits, programmes delivered, and audience numbers have all **improved** (**increased**). However, until there is more evidence of a sustained improvement a grade of Adequate is recommended.