

Police and Crime Plan 2016-2021

Monthly Performance Update

October 2021

National and MSG positions are to 31 August 2021 (Essex Police data are to 31 October 2021).



Version 1.4
Produced November 2021
Performance Analysis Unit, Essex Police
Sensitivity: Official

Executive Summary

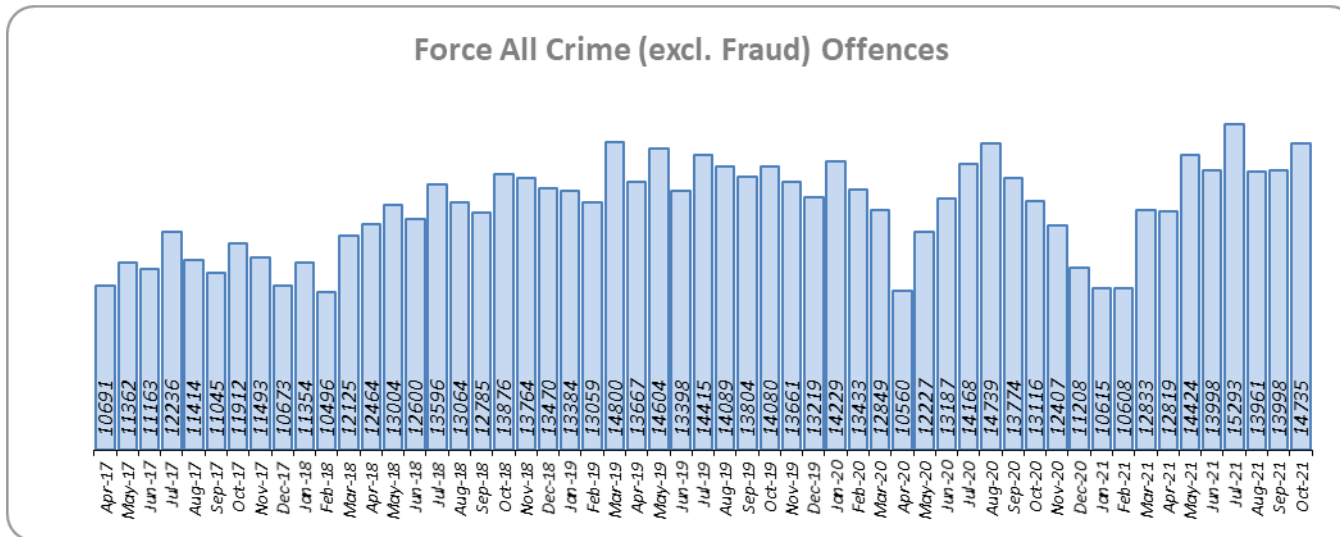
- **Four of the seven PFCC Priorities** for Essex Police have been given a recommended grade of '**Good**'. Recommended grades have been determined with reference to comparisons with Essex Police's Most Similar Group (MSG) of forces, Key Performance Indicators (KPIs), and professional judgement.
- **Three of the seven PFCC priorities** – 3 (Breaking the cycle of Domestic Abuse), 4 (Tackling Gangs and Serious Violence) and 6 (Protecting children and vulnerable people) – have been given a recommended grade of '**Requires Improvement**'. The level of improvement required to reach 'Good' has been added to the narrative for each priority.
- **All Crime fell by 1.6% for the 12 months to October 2021** compared to the 12 months to October 2020; this equates to 2,552 fewer offences. This decrease has been primarily influenced by the Government's restrictions on gathering and movement in relation to COVID-19. *Each change in the rules relating to social distancing has affected the number of All Crime offences reported to Essex Police.**
- There was a 4.7% increase in All Crime in October 2021 compared to October 2019 (14,735 October 2021 v. 14,080 October 2019). The Force also recorded 4,175 more offences in October 2021 than in April 2020 (10,560 offences), when the Government implemented the first lockdown; this equates to 39.5% more offences.
- The Force recorded **515 more Violence with Injury (VWI) offences (58.9% increase) in October 2021 compared to April 2020** (1,390 v. 875 offences). The number of **VWI offences recorded in October 2021 was higher than the number recorded before COVID restrictions were introduced**; compared with October 2019, there was a 4.3% increase (57 more crimes).
- There was a **37.0% decrease (968 fewer incidents) in the number of ASB incidents recorded in October 2021** (1,650 incidents) compared to September 2021 (2,618 incidents). The average *daily* number of ASB incidents was also 39.0% lower in October 2021 (ave. 53 incidents) compared to September 2021 (ave. 87 incidents). This decrease was both due to a general reduction in the volume of ASB reports received and the introduction of Operation SOMERTON, which aimed to improve the service given to victims of ASB and ensure that crimes are being correctly recording. This operation involved the manual review of ASB records, many of which were later reclassified from ASB to other incident types, such as crime.
- Confidence (from the independent survey commissioned by Essex Police) is at 79.8% (results to the 12 months to June 2021). **Compared to year ending June 2020, confidence in the local police increased by 10.1% points.**
- 55 more Modern Slavery referrals were made in the 12 months to October 2021 compared to the same period in 2019-20. Essex Police have increased the number of referrals and worked to achieve greater range and engagement with hard to access groups, thereby creating more opportunities to help vulnerable people. This has resulted in the number of referrals being higher in the 12 months to October 2021 compared to the same period the previous year.

* Please see table showing the affect of social distancing measures on pages 13 - 16.

Priority 1 - More local, visible and accessible policing

Grade: **Good**

Police Priority Indicators	12 months to Oct 2019	12 months to Oct 2020	12 months to Oct 2021	Number Difference 2020/21	% Difference 2020/21	Essex per 1,000 pop.	MSG Ave per 1,000 pop.	# diff.	Essex MSG Position
Number of all crime offences	168,398	157,846	155,294	-2,552	-1.6	83.2	72.1	11.1	8



Essex experienced a 1.6% decrease in All Crime (2,552 fewer offences) for the 12 months to October 2021 compared to the 12 months to October 2020. This decrease in crime has been primarily influenced by the Government’s restrictions on gathering and movement in relation to COVID-19. Essex is eighth in its Most Similar Group of forces (MSG) for crime per 1,000 population.

Essex Police recorded a daily average of 475 crimes in October 2021, compared with an average of 467 crimes in September 2021. This equates to an increase of 1.9%.

14,735 offences were recorded in October 2021, an increase of 12.3% (1,619 more offences) compared to October 2020 (13,116 offences). There was a 4.7% increase in October 2021 compared to October 2019 (14,080 offences).

Priority 1 - More local, visible and accessible policing

Grade: **Good**

Police Priority Indicators	12 months to June 2019	12 months to June 2020	12 months to June 2021	Number Difference 2020/21	% Difference 2020/21
Percentage of people who have confidence in policing in Essex (internal survey)	66.7	69.7	79.8	10.1	-
<i>Confidence Interval</i>	1.1	1.0	0.9		

Police Priority Indicators	12 months to March 2018	12 months to March 2019	12 months to March 2020	Number Difference 2019/20	% Difference 2019/20	Essex	MSG Ave	# diff.	Essex MSG Position
Confidence in the local police (Crime Survey of England and Wales)*	52.4	46.9	48.6	1.6	-	48.6	55.1	-6.5	8
<i>Confidence Interval</i>	4.5	4.5	3.9			3.9	1.6		

Police Priority Indicators	12 months to Oct 2019	12 months to Oct 2020	12 months to Oct 2021	Number Difference 2020/21	% Difference 2020/21	Essex	MSG Ave	# diff.	Essex MSG Position
Harm (Crime Severity) Score** v. Most Similar Group of Forces (MSG) - All Crime	13.4	13.1	13.1	-	-	13.1	11.1	2.0	7
Emergency response attendance within 15 mins (urban) or 20 mins (rural) (GOS %)***	71.4	79.1	80.4	1.3	-				

Confidence (from the independent survey commissioned by Essex Police) is at 79.8% (results to the 12 months to June 2021). Compared to year ending June 2020, confidence in the local police has significantly increased (an improvement of 10.1% points).

The All Crime Harm (Crime Severity) Score** (13.1) places Essex seventh in its MSG.

Essex Police's performance in relation to emergency response attendance within 15 minutes (urban) or 20 minutes (rural) has improved by 1.3 percentage points to 80.4% in the 12 months to October 2021 compared to the 12 months to October 2020. This is above the 80% target.

Due to the fact that the percentage of people who have confidence in policing in Essex has increased and the emergency response attendance is above the 80% target, a grade of Good is recommended.

Please note:

* Crime Survey of England and Wales data are no longer available at Force level. Data are for the 12 months to March 2020.

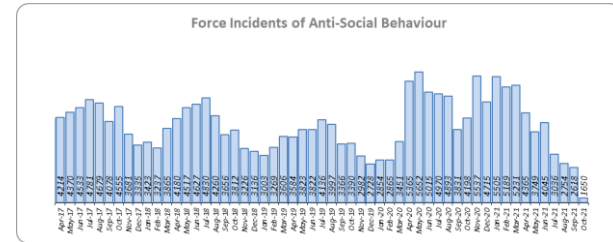
** Crime Severity Scores (as calculated by the Office for National Statistics) measure the 'relative harm' of crimes by taking into account both their volume and their severity. Data are for the 12 months to August in all three years.

*** Grade of Service.

Priority 2 - Crack down on anti-social behaviour

Grade: **Good**

Police Priority Indicators	12 months to Oct 2019	12 months to Oct 2020	12 months to Oct 2021	Number Difference 2019/20	% Difference 2019/20
Number of anti-social behaviour incidents **	42,592	49,180	47,994	-1,186	-2.4



Police Priority Indicators	12 months to March 2018	12 months to March 2019	12 months to March 2020	Number Difference 2019/20	% Difference 2019/20	Essex	MSG Ave	# diff.	Essex MSG Position
ASB Perception:- Perception that ASB is a problem (CSEW)*	11.0	3.3	4.3	1.0	-	4.3	4.8	-0.5	4
<i>Confidence Interval</i>	5.4	2.5	2.9			2.9	1.4		

Police Priority Indicators	12 months to June 2019	12 months to June 2020	12 months to June 2021	% pt. Difference 2020/21	% Difference 2019/20
Percentage of people who have confidence Essex Police and the organisations they work with are dealing with ASB (internal survey)	64.5	69.4	69.8	0.4	-
<i>Confidence Interval</i>	1.1	1.1	1.1		

Essex experienced a 2.4% decrease (1,186 fewer) in Anti-Social Behaviour (ASB) incidents for the 12 months to October 2021 compared to the 12 months to October 2020. This decrease was due to the COVID-19 restriction period, during which many additional reports were received that related to activities that were not previously considered to be ASB; examples include social gatherings and shops and businesses continuing to trade. Since March 2020 the number of ASB incidents reported has generally been higher when tighter restrictions were implemented by the Government, and lower when restrictions were eased.

There was a decrease of 60.7% ASB reports in October 2021 compared to October 2020 (2,548 fewer incidents). The average daily number of ASB incidents decreased by 39.0% in October 2021 (53 incidents) compared to September 2021 (87 incidents). October 2021 experienced the lowest number of ASB incidents recorded per month since April 2017 (1,650 incidents).**

The number of ASB incidents for the 12 months to October 2021 compared to the 12 months to October 2019 increased by 12.7% (5,402 more incidents).**

The results of Essex’s independent survey in relation to how well residents perceive Essex Police and partner organisations to be dealing with ASB showed a slight improvement: 0.4% points.

Due to the increase in public perception from the Essex independent survey, a grade of Good is recommended.

Please note:

*Crime Survey of England and Wales data are no longer available at Force level. Data are for the 12 months to March 2020.

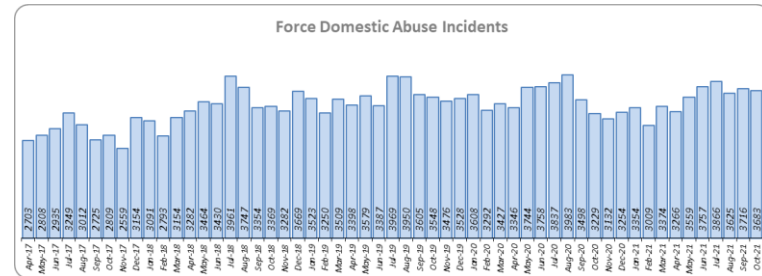
**October 2021 saw the implementation of Operation SOMERTON, which aims to improve the service given to victims of ASB and ensure correct recording.

Priority 3 - Breaking the cycle of domestic abuse

Grade: **Requires Improvement**

Police Priority Indicators	12 months to Oct 2019	12 months to Oct 2020	12 months to Oct 2021	Number Difference 2019/20	% Difference 2019/20
Number of incidents of domestic abuse	42,669	42,726	41,159	-1,567	-3.7
Number of repeat incidents of domestic abuse	20,289	19,524	20,491	967	5.0
Number of domestic abuse arrests	11,876	13,940	14,667	727	5.2
Number of Domestic Violence Protection Notices (DVPNs) and Protection Orders (DVPOs)	179	237	214	-23	-9.7

Police Priority Indicators	12 months to Oct 2019	12 months to Oct 2020	12 months to Oct 2021	Number Difference 2019/20	% Difference 2019/20
Total domestic abuse offences solved	3,068	3,499	3,011	-488	-13.9
High Risk domestic abuse offences solved	774	738	710	-28	-3.8
Medium Risk domestic abuse offences solved	983	938	644	-294	-31.3
Standard Risk domestic abuse offences solved	1,116	1,641	1,506	-135	-8.2



Essex experienced a 3.7% decrease (1,567 fewer) in Domestic Abuse incidents but a 5.0% increase (967 more) in repeat incidents of Domestic Abuse for the 12 months to October 2021 compared to the 12 months to October 2020. There was also a 5.2% increase (727 more) in Domestic Abuse arrests but a 9.7% decrease (23 fewer) in the number of Domestic Violence Protection Notices (DVPN) and Protection Orders (DVPO) issued in the 12 months to October 2021 compared to the 12 months to October 2020.

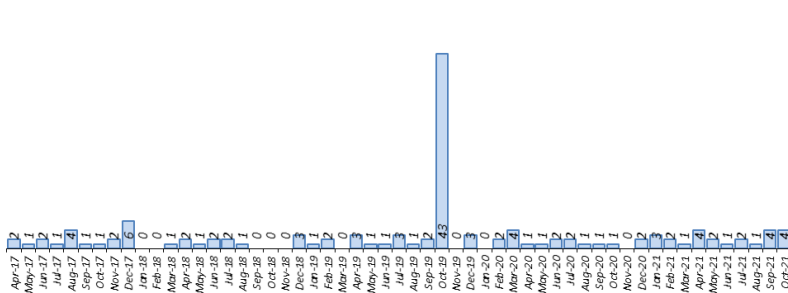
Domestic Abuse incidents in October 2021 were higher than at pre-COVID levels, with a 3.8% increase (135 more incidents) compared to October 2019.

There was a 13.9% decrease (488 fewer) in the number of solved Domestic Abuse outcomes in the 12 months to October 2021 compared to the 12 months to October 2020 and a 1.9% decrease (57 fewer) compared to the 12 months to October 2019.

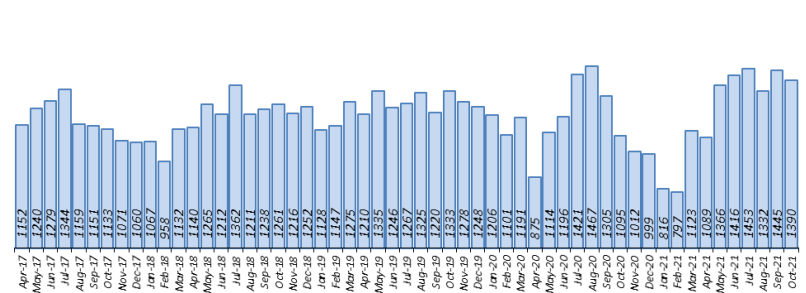
Due to the fact that the number of DA solved offences has decreased for the sixth month in a row, a grade of Requires Improvement is recommended. For a grade of 'Good' to be recommended, the number of repeat incidents of domestic abuse would need to reduce and the number of solved domestic abuse offences increase.

Police Priority Indicators	12 months to Oct 2019	12 months to Oct 2020	12 months to Oct 2021	Number Difference 2019/20	% Difference 2019/20	Essex per 1,000 pop.	MSG Ave per 1,000 pop.	# diff.	Essex MSG Position
Number of homicides	62	19	24	5	26.3	0.011	0.009	0.002	5
Number of violence with injury offences (new definition from Nov 2017)	15,288	14,476	14,193	-283	-2.0	7.451	7.768	-0.317	5

Force Homicide Offences



Force Violence with Injury Offences



5 more Homicides (to 24 offences) were recorded for the 12 months to October 2021 compared to the 12 months to October 2020. Essex is fifth in its Most Similar Group (MSG) of forces for offences per 1,000 population, and is slightly higher than the MSG average.

Four Homicides were recorded in October 2021 compared to one offence in October 2020. In October 2019, 43 homicides were recorded; this figure includes the tragic incident in which 39 Vietnamese nationals were discovered in a lorry trailer in Grays.

There was a 2.0% decrease (283 fewer offences) in Violence with Injury offences for the 12 months to October 2021 compared to the 12 months to October 2020. The average daily number of Violence with Injury offences was 45 for October 2021 and 48 for September 2021. 515 more offences (58.9%) were recorded in October 2021 (1,390 offences) compared to April 2020 (875 offences) when the Government first implemented national restrictions.

The number of Violence with Injury offences decreased by 7.2% (1,095 fewer offences) in the 12 months to October 2021 compared to the 12 months to October 2019.

Essex is fifth in its MSG for Violence with Injury offences per 1,000 population and has a lower rate of offences than the MSG average. There was also a decrease in domestic abuse-related Violence with Injury (4.4% decrease, 251 fewer offences). 38.5% of Violence with Injury is domestic abuse-related.

Priority 4 – Tackling gangs and serious violence

Grade: **Requires Improvement**

Police Priority Indicators	12 months to Oct 2019	12 months to Oct 2020	12 months to Oct 2021	Number Difference 2020/21	% Difference 2020/21	Essex	MSG Ave	# diff.	Essex MSG Position
Harm (Crime Severity) Score* v. Most Similar Group of Forces (MSG) for Violence with Injury, Rape, Other Sexual Offences and Robbery of Personal Property	7.8	7.8	8.5	-	-	8.5	7.1	1.4	7
Number of Violence with Injury, Rape, Other Sexual Offences and Robbery of Personal Property solved	2,872	3,063	2,581	-482	-15.7				
Stop and search for weapons	2,550	3,331	1,220	-2,111	-63.4				
Knife-enabled crime**	997	1,814	1,538	-276	-15.2				

The combined harm (Crime Severity) score* (8.5) for Violence with Injury, Rape, Other Sexual Offences and Robbery of Personal Property places Essex seventh in its Most Similar Group of Forces (MSG).

There was a 15.7% decrease (482 fewer) in the number of solved high harm offences (Violence with Injury, Rape, Other Sexual Offences and Robbery of Personal Property combined) in the 12 months to October 2021 compared to the 12 months to October 2020. Please see page 19 for the numbers of solved for each category.

There was a 63.4% decrease (2,111 fewer) in the number of stop and search for weapons in the 12 months to October 2021 compared to the 12 months to October 2020.

There was an 15.2% decrease (276 fewer) in the number of Knife-enabled crime offences in the 12 months to October 2021** compared to the 12 months to October 2020.

The number of solved high harm offences decreased by 10.1% (291 fewer) in the 12 months to October 2021 compared to the 12 months to October 2019. The number of stop and search for weapons also decreased by 52.2% (1,330 fewer) in the same period.

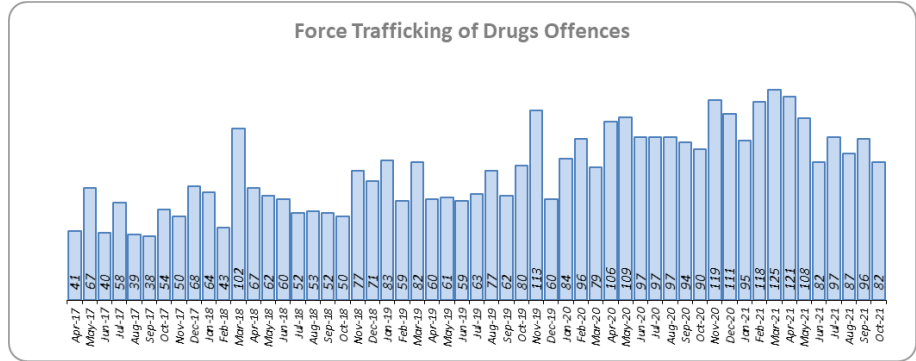
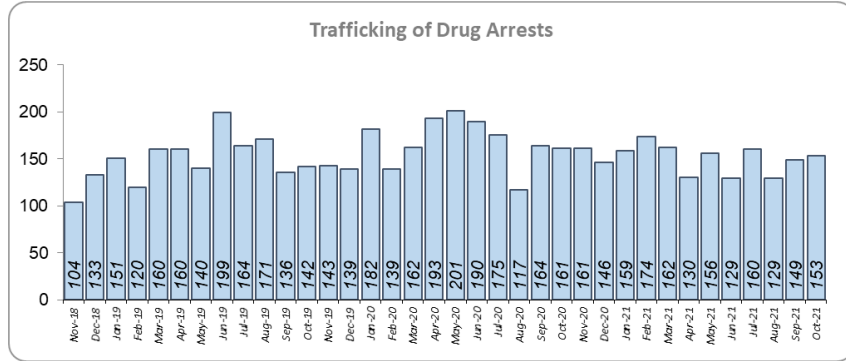
Due to the fact that Essex is higher than the MSG average for the number of Homicides recorded per 1,000 pop., and that the number of solved high harm offences has reduced, a grade of Requires Improvement is recommended. For a grade of 'Good' to be recommended, a reduction in the harm severity score and an increase in the number of solved high harm offences are required.

Please note:

* Crime Severity Scores (as calculated by the Office for National Statistics) measure the 'relative harm' of crimes by taking into account both their volume and their severity. Data are for the 12 months to August in all three years.

** The number of knife crime offences is an indicator of how effective Essex Police is at identifying knife-enabled offences, and is not necessarily reflective of the number of these offences that have been committed in the county. This is because the identification of these offences is reliant on the appropriate indicator being manually added to the crime record. A new data quality process was introduced in June 2020 and Essex Police is currently working with the National Data Quality Improvement Service (NDQIS) to revise knife crime flags. In September 2021, data from April 2019 was revised; this resulted in an increase in the number of offences recorded, particularly in the 2019/20 financial year. This has enabled Essex Police to better understand knife crime in Essex.

Police Priority Indicators	12 months to Oct 2019	12 months to Oct 2020	12 months to Oct 2021	Number Difference 2019/20	% Difference 2019/20
Number of Organised Criminal Group disruptions*	47	191	287	96	50.3
Trafficking of drugs arrests	1,780	1,963	1,812	-151	-7.7



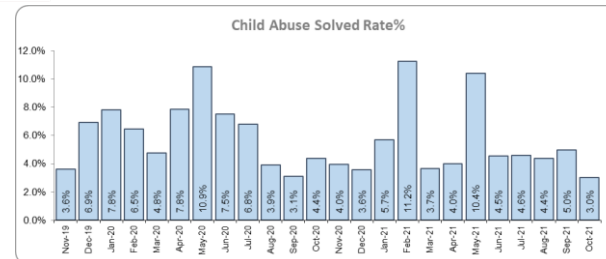
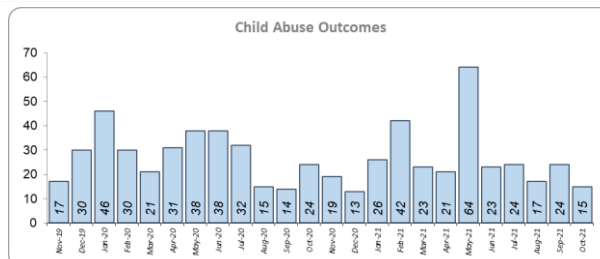
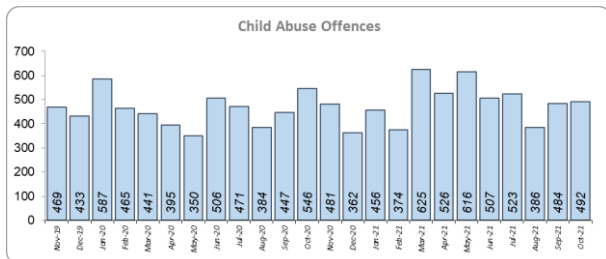
Essex experienced a 50.3% increase in Organised Crime Group (OCG) disruptions (96 more) for the 12 months to September 2021 compared to the 12 months to September 2020. In January 2019 there was a change in the way in which the number of OCG disruptions were counted; this follows National Crime Agency (NCA) and Eastern Region Special Operations Unit (ERSOU) guidance to ensure that all forces record disruptions in the same way.

Trafficking of drug arrests, which are primarily driven by police proactivity, decreased by 7.7% (151 fewer) in the 12 months to October 2021 compared to the 12 months to October 2020 but increased by 1.8% (32 more) compared to the 12 months to October 2019. In the same period, 12.9% more trafficking of drugs offences have been recorded (146 more offences to 1,278).

Due to the increase in OCG disruptions, a grade of Good is recommended.

* OCG disruptions are now reported quarterly. Data are to September 2021. Due to the change in recording in January 2019 it is not possible to compare the 12 months to September 2019 to the 12 months to September 2021.

Police Priority Indicators	12 months to Oct 2019	12 months to Oct 2020	12 months to Oct 2021	Number Difference 2019/20	% Difference 2019/20
Number of child abuse outcomes	247	351	319	-32	-9.1
Number of child abuse offences	4,977	5,534	5,874	340	6.1
Child abuse solved rate	5.0	6.3	5.4	-0.9	-
Child Sexual Abuse/Exploitation investigations	2,065	2,024	2,388	364	18.0
Modern Slavery referrals made to the National Referral Model (NRM)*	71	111	166	55	49.5



There was an 18.0% increase (364 more) in the number of Child Sexual Abuse/Exploitation investigations in the 12 months to October 2021 compared to the 12 months to October 2020 and a 9.1% decrease (32 fewer) in the number of solved Child Abuse Outcomes. Compared to the 12 months to October 2019, the number of child abuse solved outcomes in the last year increased by 29.1% (72 more outcomes).

15.6% more Child Sexual Abuse/Exploitation investigations (an increase of 323) were recorded in the 12 months to October 2021 compared to the 12 months to October 2019.

6.1% more Child Abuse offences (an increase of 340) were recorded in the 12 months to October 2021 compared to the 12 months to October 2020. This increase in offences can be partly attributed to a rise in referrals from schools in the latter part of 2020. The number of child abuse offences increased by 18.0% (897 more offences) in the 12 months to October 2021 compared to the 12 months to October 2019.

166 Modern Slavery referrals were made in the 12 months to October 2021 compared with 111 in the 12 months to October 2020 (55 more).

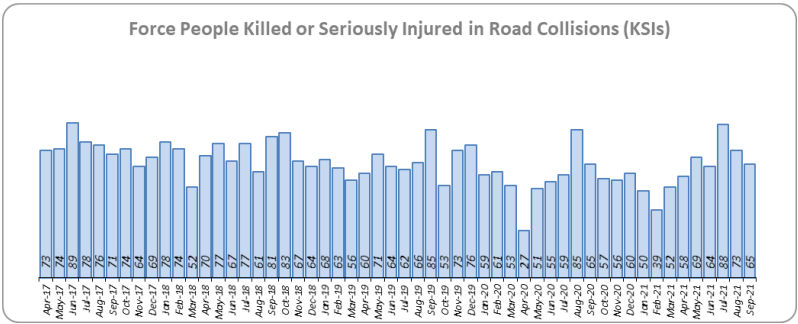
Due to the decrease in the number of child abuse outcomes and the increase in child abuse offences, a grade of Requires Improvement is recommended. For a grade of 'Good' to be recommended, an increase in the number of child abuse offences solved is required.

* Due to a change in recording of Modern Slavery referrals in April 2019 it is not possible to compare the 12 months to October 2019 to the 12 months to October 2021.

Priority 7 - Improve safety on our roads

Grade: **Good**

Police Priority Indicators	12 months to Oct 2019	12 months to Oct 2020	12 months to Oct 2021	Number Difference 2019/20	% Difference 2019/20	Essex (per 100 million km) Data to June 2020	MSG Ave (per 100 million km) Data to June 2020	# diff.	Essex MSG Position
All people killed or seriously injured (KSI) in road collisions**	851	726	736	10	1.4	0.795	0.652	0.144	6
Number of driving related mobile phone crime on Essex roads*	-	580	459	-121	-20.9				
Number of driving under the influence of drink and/or drugs on Essex roads	3,566	4,273	2,903	-1,370	-32.1				
<i>Number of driving under the influence of drink on Essex roads</i>	1,427	1,454	1,315	-139	-9.6				
<i>Number of driving under the influence of drugs on Essex roads</i>	1,755	2,366	1,243	-1,123	-47.5				
<i>Number of Failure to Provide samples</i>	384	453	345	-108	-23.8				



Rolling 12 months	12 months to Sep 2019	12 months to Sep 2020	12 months to Sep 2021	Number Difference 2020/21	% Difference 2020/21
KSI - All	881	726	736	10	1.4%
KSI - Fatalities	42	48	39	-9	-18.8%
KSI - Serious injuries	839	678	697	19	2.8%
Number of Collisions	828	677	670	-7	-1.0%

There was a 1.4% increase (10 more) in the number of those Killed or Seriously Injured (KSI) in Essex for the 12 months to September 2021 compared to the 12 months to September 2020. The number of KSIs decreased by 16.5% (145 fewer offences) in the 12 months to September 2021 compared to the 12 months to September 2019. Please note that most KSIs do not necessarily result in criminal offences (such as death or serious injury caused by dangerous driving) being recorded. Essex is sixth in its Most Similar Group (MSG) of forces for casualties per 100 million vehicle kilometres (results to June 2020) and slightly worse than the MSG average. However, due to the fact that more recent national figures have not been released, the current position cannot be determined (the date of the next national release has not yet been confirmed).

There was a 20.9% decrease (121 fewer offences) in the number of driving related mobile phone offences recorded for the 12 months to October 2021 compared to the 12 months to October 2020.* There was also a 32.1% decrease (1,370 fewer offences) in drink/drug driving offences for the 12 months to October 2021 compared to the 12 months to October 2020; of these offences, there was a 9.6% decrease (139 fewer offences) in *drink* driving and a 47.5% decrease (1,123 fewer offences) in *drug* driving. All of these offence types are primarily driven by police proactivity in relation to road safety.

Due to the decrease in the number of drink/drug driving offences in the past 12 months, a grade of Good is recommended.

* In 2019, the definition as to what constituted “use” of a mobile phone in relation to driver-related mobile phone offences was subject to a legal challenge. This resulted in a ruling, which held that while “use” included accessing the interactive functions of the mobile phone (such as making calls, sending messages or using the internet), it did not extend to solely accessing the device’s internal functions (such as making use of the camera). Fewer mobile phone offences were subsequently prosecuted from this point. In 2021, however, the law was changed: it is now illegal to “hold” a phone or sat nav when driving or riding a motorcycle. Offences may therefore start to increase.

** Data as to September 2021 as the system used to provide these data is unavailable. Other forces are also affected.

Monthly Performance Overview: Exceptions

Exceptions Overview

Anti-Social Behaviour Incidents experienced a statistically significant decrease for the month of October 2021. Racial/Religiously Aggravated Offences and Hate Crime HO Definition experienced statistically significant increases for the month of October 2021.

Anti-Social Behaviour Incidents – Decrease

2.4% decrease (1,186 fewer incidents) for the 12 months to October 2021 compared to the 12 months to October 2020. There were statistically exceptional decreases in nine Districts in October 2021.*

Racial/Religiously Aggravated Offences– Increase

11.5% increase (207 more crimes) for the 12 months to October 2021 compared to the 12 months to October 2020. There were statistically exceptional decreases in five Districts in October 2021.

Hate Crime HO Definition – Increase

28.9% increase (965 more crimes) for the 12 months to October 2021 compared to the 12 months to October 2020. Hate Crime was also statistically exceptionally high in the months of May, June, July, and September 2021 (as well as in October 2021).

* Please see note 13 on page 18

Monthly Performance Overview: Of Note

COVID-19: Restrictions of movement and social distancing

Since 13 March 2020, the Government implemented a series of alert levels and steps regarding the level of social distancing allowed in relation to COVID-19. Each change has affected the number of All Crime offences recorded.

On 14 October 2020 the Government introduced three levels of restrictions according to different levels of infections around the country. Tier 1 – Medium, Tier 2 – High and Tier 3 – Very High.

On 5 November 2020 the Government implemented a period of increased restrictions which ended on 2nd December 2020 when the country returned to the Tier system.

On 20 December the Government introduced Tier 4 – Stay at Home and on 5th January 2021 a third period of increased restrictions was implemented.

Date Period	Alert Level - Essex County Council	Alert Level - Thurrock and Southend	Number of days	Daily Average
01/11/2020 - 04/11/2020	Tier 2 - High	Tier 1 - Medium	4	424

Date Period	Level	Restrictions	Number of days	Daily Average
05/11/2020 - 02/12/2020	Period of increased restrictions	<ul style="list-style-type: none"> • Main Restrictions <ul style="list-style-type: none"> • Pubs and restaurants closed but takeaways permitted • Non-essential shops, leisure and entertainment venues closed • No households mixing indoors, or in private gardens, unless in your support bubble • Stay home - only leave for specific reasons including education and work • Schools, universities and colleges remain open • Outdoor recreation encouraged, you can meet one person outside your household 	28	406

Date Period	Alert Level - Essex County Council	Alert Level - Thurrock and Southend	Number of days	Daily Average
03/12/2020 - 15/12/2020	Tier 2 - High	Tier 2 - High	13	381
16/12/2020 - 19/12/2020	Tier 3 - Very High*	Tier 3 - Very High	4	375
20/12/2020 - 04/01/2021	Tier 4 - Stay at Home*	Tier 4 - Stay at Home	16	318
05/01/2021 - 07/03/2021	Tier 4 - Stay at Home with increased restrictions	Tier 4 - Stay at Home with increased restrictions	63	361

Monthly Performance Overview: Of Note (continued)

COVID-19: Restrictions of movement and social distancing

In March 2021 the Government announced its roadmap out of restrictions, starting with Step 1 on 8th March, Step 1a on 29th March and Step 2 on 12th April.

Date Period	Level	Restrictions	Number of days	Daily Average
08/03/2021 - 28/03/2021	Easing of restrictions - Step 1	<ul style="list-style-type: none"> Schools and colleges are open for all students. University students can return for practical courses. Recreation or exercise outdoors with household or one other person. 30 people allowed to attend funerals. 6 people allowed to attend weddings and wakes. 	20	412
29/03/2021 - 11/04/2021	Easing of restrictions - Step 1a	<ul style="list-style-type: none"> Rule of 6 or two households outdoors. No household mixing indoors. Outdoor Sport and leisure facilities reopen. Organised outdoor sport allowed (children and adults). Minimise travel. No holidays. Outdoor parent and child groups (up to 15 parents). 	14	382
12/04/2021 - 16/05/2021	Easing of restrictions - Step 2	<ul style="list-style-type: none"> Advice remains to keep journeys to a minimum and work from home where possible. <ul style="list-style-type: none"> Pubs and restaurants are allowed to serve drinks and meals outdoors. All shops can open. Hairdressers, nail salons and other personal care businesses can reopen. Indoor gyms and sports facilities reopen for individual exercise or for exercise with your household or bubble. Indoor children's activities. Members of the same household can take a holiday in self-contained accommodation. 30 people allowed to attend funerals. 15 people allowed to attend weddings and wakes. 	35	448

* The majority of Essex is in this Tier

Monthly Performance Overview: Of Note (continued)

COVID-19: Restrictions of movement and social distancing

The Government continued on its roadmap out of restrictions with Step 3 on 17th May 2021 and Step 3a on 21st June.

Date Period	Level	Restrictions	Number of days	Daily Average
17/05/2021 - 20/06/2021	Easing of restrictions - Step 3	<ul style="list-style-type: none"> • Social distancing will remain in place in social care, medical, retail, hospitality and business settings. People will still need to wear face coverings on transport and in shops, unless they are exempt <ul style="list-style-type: none"> • People can meet in groups of up to 30 outdoors • Six people, or two households, can meet indoors with overnight stays allowed • Pubs, restaurants bars and cafes allowed to serve customers indoors • Museums, theatres and cinemas can open • Hotels, hostels and B&Bs can reopen • Adult indoor group exercise classes can restart • People urged to be cautious about hugging close friends and family • Face coverings no longer recommended in secondary schools for pupils • All remaining university students eligible to return to in-person teaching 	35	470
21/06/2021 - 18/07/2021	Easing of restrictions - Step 3a	<ul style="list-style-type: none"> • Social distancing will remain in place in social care, medical, retail, hospitality and business settings. People will still need to wear face coverings on transport and in shops, unless they are exempt <ul style="list-style-type: none"> • The number of guests at a wedding is no longer limited to 30, (although risk assessments must be carried out to ensure social distancing can take place). Similar rules apply to wakes • Care home residents will not necessarily have to self-isolate after leaving their care homes and they will be able to nominate an "essential care-giver" who can visit even if they are self-isolating • Children can go on overnight trips in groups of 30 • Large events pilots will continue, including sport, art and music events 	28	483

Monthly Performance Overview: Of Note (continued)

COVID-19: Restrictions of movement and social distancing

On 19th July 2021 all legal restrictions were lifted but the Government urged caution due to rising case numbers.

Date Period	Level	Restrictions	Number of days	Daily Average
19/07/2021 - 31/10/2021	End of legal restrictions	<ul style="list-style-type: none"> • Social distancing <ul style="list-style-type: none"> • No limit on meeting people but try to meet others outside where possible • 1m-plus guidance removed (except in some places like hospitals and passport control when entering) • Face coverings no longer required by law, although the government still "expects and recommends" them in crowded and enclosed spaces • Some shops and transport operators will still require masks • Events and gatherings <ul style="list-style-type: none"> • Nightclubs can reopen • Business and large events encouraged to use Covid-certification to limit the spread of the virus • Pubs and restaurants no longer table-service only • No limits on guests at weddings and funerals • No limits on people attending concerts, theatres, cinemas or sports events • No restrictions on communal worship • Other changes <ul style="list-style-type: none"> • People currently working from home should return to the workplace gradually • Limits on visitors to care homes will be removed 	105	464

County Lines Intensification Week: 11th to 17th October

55 arrests and cash, weapons and drugs seized

A week of action resulted in 55 arrests, £180,000 being seized and disruption to 13 drugs lines. Out of those arrested, 39 people were charged and 13 remain released under investigation.

The arrests were made across the county and beyond and were supported by the Eastern Region Special Operations Unit and the National County Lines Coordination Centre. Op Raptor, the Operational Support Group, the Dog Section and Custody all played a part.

2016-2021 Police and Crime Plan Performance Indicators

Table 1

Police and Crime Plan Priorities	Police Priority Indicators	12 months to Oct 2019	12 months to Oct 2020	12 months to Oct 2021	Number Difference 2020/21	% Difference 2020/21	Direction of Travel 2020/21
Priority 1 - More local, visible and accessible policing	Percentage of people who have confidence in policing in Essex (internal survey) ¹	66.7	69.7	79.8	10.1	-	Improving
	<i>Confidence Interval</i> ²	1.1	1.0	0.9			
	Confidence in the local police (CSEW) ³	52.4	46.9	48.6	1.6	-	Stable
	<i>Confidence Interval</i> ²	4.5	4.5	3.9			
	Number of all crime offences	168,398	157,846	155,294	-2,552	-1.6	Improving
	Harm (Crime Severity) Score - All Crime ⁸	13.4	13.1	13.1	-	-	
	Emergency response attendance within 15 minutes (urban) or 20 minutes (rural)	71.4	79.1	80.4	1.3	-	Improving
Priority 2 - Crack down on anti-social behaviour	Number of anti-social behaviour incidents ¹³	42,592	49,180	47,994	-1,186	-2.4	Improving
	Percentage of people who have confidence that the policing response to ASB is improving (internal survey) ⁴	64.5	69.4	69.8	0.4	-	Stable
	<i>Confidence Interval</i> ²	1.1	1.1	1.1			
Priority 3 - Breaking the cycle of domestic abuse	Number of incidents of domestic abuse	42,669	42,726	41,159	-1,567	-3.7	Improving
	Number of repeat incidents of domestic abuse	20,289	19,524	20,491	967	5.0	Deteriorating
	Number of domestic abuse arrests	11,876	13,940	14,667	727	5.2	Improving
	Number of Domestic Violence Protection Notices (DVPNs) and Protection Orders (DVPOs)	179	237	214	-23	-9.7	Deteriorating
	Number of domestic abuse offences solved	3068	3,499	3,011	-488	-13.9	Deteriorating
Priority 4 - Tackling gangs and serious violence	Number of homicides ⁷	62	19	24	5	26.3	Deteriorating
	Number of violence with injury offences (new definition from Nov 2017)	15,288	14,476	14,193	-283	-2.0	Improving
	Harm (Crime Severity) Score for Violence with Injury, Rape, Other Sexual Offences and Robbery of Personal Property ⁸	7.8	7.8	8.5	-	-	
	Number of Violence with Injury, Rape, Other Sexual and Robbery of Personal Property Offences solved	2,872	3,063	2,581	-482	-15.7	Deteriorating
	Stop and search for weapons	2,550	3,331	1,220	-2,111	-63.4	Deteriorating
	Knife-enabled crime ⁹	997	1,814	1,538	-276	-15.2	Improving
Priority 5 - Disrupting and preventing organised crime	Number of Organised Criminal Group disruptions ¹²	47	191	287	96	50.3	Improving
	Trafficking of drugs arrests	1,780	1,963	1,812	-151	-7.7	Deteriorating
Priority 6 - Protecting children & vulnerable people	Number of child abuse outcomes ⁵	247	351	319	-32	-9.1	Deteriorating
	Child abuse offences	4,977	5,534	5,874	340	6.1	Deteriorating
	Child abuse solved rate	5.0	6.3	5.4	-0.9	-	Deteriorating
	Child Sexual Abuse/Exploitation investigations	2,065	2,024	2,388	364	18.0	-
	Modern Slavery referrals made to the National Referral Model (NRM) ¹¹	71	111	166	55	49.5	Improving
Priority 7 - Improve safety on our roads	Number of driving related mobile phone crime on Essex roads ¹⁰	-	580	459	-121	-20.9	Improving
	Number of driving under the influence of drink and/or drugs on Essex roads	3,566	4,273	2,903	-1,370	-32.1	Improving
	All people killed or seriously injured (KSI) in road collisions ⁶	851	726	736	10	1.4	Deteriorating

[Please view above table with the explanations and caveats detailed on page 18.](#)

End Notes

- ¹ Question from the independent survey commissioned by Essex Police (Percentage of people who have confidence in policing in Essex). Results are for the period 12 months June 2021 versus the 12 months to June 2020.
- ² The confidence interval is the range +/- between where the survey result may lie. This is mainly influenced by the number of people answering the survey. The more people that answer the survey, the smaller the interval range.
- ³ Crime Survey of England and Wales data are no longer available at Force level. Data are for the 12 months to March 2020.
- ⁴ Question from Essex Police's own confidence and perception survey (Percentage of people who have confidence that the policing response to ASB is improving). Results are for the period 12 months to June 2021 versus the 12 months to June 2020.
- ⁵ Solved outcomes are crimes that result in: charge or summons, caution, crimes taken into consideration, fixed penalty notice, cannabis warning or community resolution.
- ⁶ 'Killed or Seriously Injured' (KSI) refers to all people killed or seriously injured on Essex's roads, regardless of whether any criminal offences were committed. 'Causing Death/Serious Injury by Dangerous/Inconsiderate Driving' offences (detailed on p.11) refers to the number of crimes of this type. Data are to September 2021 due to problems with the system used to provide them. Other forces are also affected.
- ⁷ Please note that on Wednesday 23 October 2019 the bodies of 39 Vietnamese nationals were discovered in a lorry trailer in Grays. This tragic incident is reflected in the Homicide numbers.
- ⁸ Crime Severity Score measures 'relative harm' of crimes by taking into account both the volume and the severity of offences, and by weighting offences differently. Data are for the 12 months to August 2021.
- ⁹ The number of knife crime offences is an indicator of how effective Essex Police is at identifying knife-enabled offences, and is not necessarily reflective of the number of these offences that have been committed in the county. This is because the identification of these offences is reliant on the appropriate indicator being manually added to the crime record. A manual review of knife flags was conducted and missing flags were added retrospectively. Additionally a new data quality process was introduced in June 2020. Whilst this has enabled us to better understand knife crime in Essex, the process has consequently inflated the figures. As such, no inferences can be drawn as to the current trend.
- ¹⁰ In 2019, the definition as to what constituted "use" of a mobile phone in relation to driver-related mobile phone offences was subject to a legal challenge. This resulted in a ruling, which held that while "use" included accessing the interactive functions of the mobile phone (such as making calls, sending messages or using the internet), it did not extend to solely accessing the device's internal functions (such as making use of the camera). Fewer mobile phone offences were subsequently prosecuted from this point. In 2021, however, the law was changed: it is now illegal to "hold" a phone or sat nav when driving or riding a motorcycle. It is therefore likely that offences will now start to increase.
- ¹¹ NRM data only available from April 2019 due to recording change at that time.
- ¹² OCG disruptions are now reported quarterly. Data are to September 2021.
- ¹³ October 2021 saw the implementation of Operation SOMERTON, which aims to both improve the service given to victims of ASB and ensure crimes are correctly recorded.

Crime Tree Data – Rolling 12 Months to October

Table 2

Force

Crime Tree Data - Rolling 12 Months to October

Offences														Solved Outcomes														Solved Rates %													
Crime Type	% DA 2021	2020	2021	# diff.	% diff.	Z	CS5	1m Oct 20	1m Oct 21	Yr on Yr 1m % diff.	3m Oct 20	3m Oct 21	Yr on Yr 3m % diff.	2020	2021	# diff.	% diff.	1m Oct 20	1m Oct 21	Yr on Yr 1m % diff.	3m Oct 20	3m Oct 21	Yr on Yr 3m % diff.	2020	2021	% pt. diff.	Z	1m Oct 20	1m Oct 21	Yr on Yr 1m % pt. diff.	3m Oct 20	3m Oct 21	Yr on Yr 3m % pt. diff.								
Anti-Social Behaviour (Incidents)	-	49180	47994	-1186	-2.4	-2.2	-	-	-	-	-	-	-	-	-	-	-	-	-	-	-	-	-	-	-	-	-	-	-	-	-	-	-	-							
All Crime (excl. Action (NFIB) Fraud)	19.1	157846	155294	-2552	-1.6	1.1	-	13116	14735	12.3	41465	42577	2.7	24258	20298	-3960	-16.3	1738	1525	-12.3	5561	4674	-16.0	15.4	13.1	-2.3	-	13.3	10.3	-2.9	13.4	11.0	-2.4								
- State Based Crime	6.5	28102	27657	-445	-1.6	0.6	-	2280	2431	6.6	7485	7373	-1.5	10411	8914	-1497	-14.4	781	629	-19.5	2431	1978	-18.6	37.0	32.2	-4.8	-	34.3	25.9	-8.4	32.5	26.8	-5.7								
- Victim Based Crime	21.8	129744	127637	-2107	-1.6	1.1	-	10836	12304	13.5	33980	35204	3.6	13847	11384	-2463	-17.8	957	896	-6.4	3130	2696	-13.9	10.7	8.9	-1.8	-	8.8	7.3	-1.5	9.2	7.7	-1.6								
Victim Based Crime																																									
Violence Against the Person	34.0	65637	69136	3499	5.3	1.6	-	5484	6443	17.5	17660	18987	7.5	7818	6819	-999	-12.8	582	557	-4.3	1932	1636	-15.3	11.9	9.9	-2.0	-	10.6	8.6	-2.0	10.9	8.6	-2.3								
- Homicide	29.2	19	24	5	26.3	0.2	14	1	4	300.0	4	9	125.0	18	15	-3	-16.7	0	2	-	3	5	66.7	94.7	62.5	-32.2	-	0.0	50.0	50.0	75.0	55.6	-19.4								
- Violence with Injury	38.5	14476	14193	-283	-2.0	1.0	1	1095	1390	26.9	3872	4166	7.6	2479	2058	-421	-17.0	191	186	-2.6	630	507	-19.5	17.1	14.5	-2.6	-	17.4	13.4	-4.1	16.3	12.2	-4.1								
- Death or Serious Injury caused by unlawful driving	7.7	30	13	-17	-56.7	-1.0	20	5	0	-100.0	13	1	-92.3	27	13	-14	-51.9	6	0	-100.0	12	2	-83.3	90.0	100.0	10.0	-	120.0	-	-	92.3	200.0	107.7								
- Death or serious injury caused by dangerous driving	0.0	22	12	-10	-45.5	-	-	2	0	-100.0	8	1	-87.5	19	11	-8	-42.1	3	0	-100.0	8	2	-75.0	86.4	91.7	5.3	-	150.0	-	-	100.0	200.0	100.0								
- Death by careless driving (drink or drugs)	-	0	0	0	-	-	-	0	0	-	0	0	-	0	0	0	-	0	0	-	0	0	-	-	-	-	-	-	-	-	-	-	-								
- Death by careless or inconsiderate driving	-	6	0	-6	-100.0	-	-	2	0	-100.0	3	0	-100.0	7	0	-7	-100.0	2	0	-100.0	3	0	-100.0	116.7	-	-	-	100.0	-	-	-	100.0	-	-							
- Death or serious injury driving - unlicensed, disqualified, uninsured	-	1	0	-1	-100.0	-	-	0	0	-	1	0	-100.0	0	1	1	-	0	0	-	0	0	-	0.0	-	-	-	-	-	-	-	0.0	-	-							
- Causing death by aggravated vehicle taking	100.0	1	1	0	0.0	-	-	1	0	-100.0	1	0	-100.0	1	1	0	0.0	1	0	-100.0	1	0	-100.0	100.0	100.0	0.0	-	100.0	-	-	-	-	100.0	-	-						
- Violence without Injury	36.4	27404	27621	217	0.8	1.8	6	2258	2644	17.1	7085	7757	9.5	3381	2972	-409	-12.1	250	251	0.4	814	752	-7.6	12.3	10.8	-1.6	-	11.1	9.5	-1.6	11.5	9.7	-1.8								
- Stalking and Harassment	29.2	23708	27285	3577	15.1	1.2	8	2125	2405	13.2	6686	7054	5.5	1913	1761	-152	-7.9	135	118	-12.6	473	370	-21.8	8.1	6.5	-1.6	-	6.4	4.9	-1.4	7.1	5.2	-1.8								
Sexual Offences	25.4	4681	5733	1052	22.5	1.3	-	434	532	22.6	1239	1562	26.1	442	412	-30	-6.8	31	21	-32.3	82	78	-4.9	9.4	7.2	-2.3	-	7.1	3.9	-3.2	6.6	5.0	-1.6								
- Rape	43.2	1976	2519	543	27.5	1.8	-	174	252	44.8	532	750	41.0	845	66	-19	-22.4	7	5	-28.6	17	17	0.0	4.3	2.6	-1.7	-	4.0	2.0	-2.0	3.2	2.3	-0.9								
- Rape - Under 16 yrs	5.4	505	609	104	20.6	0.6	4	60	52	-13.3	149	159	6.7	43	34	-9	-20.9	4	2	-50.0	11	10	-9.1	8.5	5.6	-2.9	-	6.7	3.8	-2.8	7.4	6.3	-1.1								
- Rape - Over 16 yrs	55.2	1471	1910	439	29.8	2.0	2	114	200	75.4	383	591	54.3	42	32	-10	-23.8	3	3	0.0	6	7	16.7	2.9	1.7	-1.2	-	2.6	1.5	-1.1	1.6	1.2	-0.4								
- Other Sexual Offences	11.5	2705	3214	509	18.8	0.8	5	260	280	7.7	707	812	14.9	357	346	-11	-3.1	24	16	-33.3	65	61	-6.2	13.2	10.8	-2.4	-	9.2	5.7	-3.5	9.2	7.5	-1.7								
- Other sexual offences : Under 13	2.4	640	740	100	15.6	-	-	83	50	-39.8	183	180	-1.6	71	51	-20	-28.2	5	1	-80.0	13	10	-23.1	11.1	6.9	-4.2	-	6.0	2.0	-4.0	7.1	5.6	-1.5								
- Other sexual offences : Under 16	4.8	790	884	94	11.9	-	-	75	74	-1.3	179	191	6.7	130	135	5	3.8	6	3	-50.0	15	14	-6.7	16.5	15.3	-1.2	-	8.0	4.1	-3.9	8.4	7.3	-1.1								
- Other sexual offences : Age 13 to 17	12.5	12	40	28	233.3	-	-	0	1	-	1	4	300.0	2	3	1	50.0	0	1	-	1	2	100.0	16.7	7.5	-9.2	-	-	100.0	-	-	100.0	50.0	-50.0							
- Other sexual offences : Over 13	23.1	986	1245	259	26.3	-	-	79	129	63.3	262	362	38.2	96	97	1	1.0	6	8	33.3	17	20	17.6	9.7	7.8	-1.9	-	7.6	6.2	-1.4	6.5	5.5	-1.0								
- Other sexual offences : Over 16	62.5	13	8	-5	-38.5	-	-	2	2	0.0	6	2	-66.7	0	1	1	-	0	0	-	0	1	-	0.0	12.5	12.5	-	-	0.0	0.0	0.0	50.0	50.0								
- Other sexual offences : Not Age Specific	4.7	264	297	33	12.5	-	-	21	24	14.3	76	73	-3.9	58	59	1	1.7	3	3	-57.1	19	14	-26.3	22.0	19.9	-2.1	-	33.3	12.5	-20.8	25.0	19.2	-5.8								
Robbery	3.2	1386	1282	-104	-7.5	0.2	-	132	128	-3.0	393	375	-4.6	173	135	-38	-22.0	11	8	-27.3	42	22	-47.6	12.5	10.5	-2.0	-	8.3	6.3	-2.1	10.7	5.9	-4.8								
- Robbery of business property	0.0	105	97	-8	-7.6	0.9	16	16	15	-6.3	28	29	3.6	31	24	-7	-22.6	3	0	-100.0	8	1	-87.5	29.5	24.7	-4.8	-	18.8	0.0	-18.8	28.6	3.4	-25.1								
- Robbery of Personal Property	3.5	1281	1185	-96	-7.5	0.0	7	116	113	-2.6	365	346	-5.2	142	111	-31	-21.8	8	8	0.0	34	21	-38.2	11.1	9.4	-1.7	-	6.9	7.1	0.2	9.3	6.1	-3.2								
Theft Offences	3.0	42096	37311	-4785	-11.4	0.2	-	3522	3866	9.8	10655	10522	-1.2	3789	2680	-1109	-29.3	224	226	0.9	713	675	-5.3	9.0	7.2	-1.8	-	6.4	5.8	-0.5	6.7	6.4	-0.3								
- Burglary	3.0	8407	6159	-2248	-26.7	-0.6	-	605	584	-3.5	1784	1612	-9.6	467	381	-86	-18.4	19	25	31.6	130	87	-33.1	5.6	6.2	0.6	-	3.1	4.3	1.1	7.3	5.4	-1.9								
- Burglary Residential	3.9	6223	4654	-1569	-25.2	-0.5	3	458	454	-0.9	1274	1254	-1.6	295	257	-38	-12.9	12	18	50.0	100	55	-45.0	4.7	5.5	0.8	-	2.6	4.0	1.3	7.8	4.4	-3.5								
- Burglary Business & Community	0.4	2184	1505	-679	-31.1	-0.8	12	147	130	-11.6	510	358	-29.8	172	124	-48	-27.9	7	7	0.0	30	32	6.7	7.9	8.2	0.4	-	4.8	5.4	0.6	5.9	8.9	3.1								
- Burglary Dwelling (pre-Apr 17 definition)	5.8	4319	3060	-1259	-29.2	-0.5	-	312	305	-2.2	892	875	-1.9	270	232	-38	-14.1	11	15	36.4	94	47	-50.0	6.3	7.6	1.3	-	3.5	4.9	1.4	10.5	5.4	-5.2								
- Burglary Other (pre-Apr 17 definition)	0.4	4088	3099	-989	-24.2	-0.7	-	293	279	-4.8	892	737	-17.4	197	142	-55	-27.9	8	10	25.0	36	37	2.8	4.8	4.6	-0.2	-	2.7	3.6	0.9	4.0	5.0	1.0								
- Vehicle Offences (Ind. Interference)	1.3	12183	10658	-1525	-12.5	0.1	-	1080	1076	-0.4	3104	2858	-7.9	342	213	-129	-37.7	28	23	-17.9	64	49	-23.4	2.8	2.0	-0.8	-	2.6	2.1	-0.5	2.1	1.7	-0.3								
- Theft from a Vehicle	0.2	6227	5369	-858	-13.8	0.0	13	520	537	3.3	1557	1374	-11.8	101	50	-51	-50.5	7	9	28.6	19	15	-21.1	1.6	0.9	-0.7	-	1.3	1.7	0.3	1.2	1.1	-0.1								
- Theft of a Vehicle	3.3	4121	3719	-402	-9.8	0.1	10	391	386	-1.3	1096	1095	-0.1	165	127	-38	-23.0	15	8	-46.7	36																				

Crime Tree Data – Rolling 12 Months to October

Table 3

Victim Based: Under Reported		Offences										Solved Outcomes								Solved Rates %													
Crime Type	% DA 2021	2020	2021	# diff.	% diff.	Z	CSS	1m Oct 20	1m Oct 21	Yr on Yr 1m % diff.	3m Oct 20	3m Oct 21	Yr on Yr 3m % diff.	2020	2021	# diff.	% diff.	1m Oct 20	1m Oct 21	Yr on Yr 1m % diff.	3m Oct 20	3m Oct 21	Yr on Yr 3m % diff.	2020	2021	% pt. diff.	Z	1m Oct 20	1m Oct 21	Yr on Yr 1m % pt. diff.	3m Oct 20	3m Oct 21	Yr on Yr 3m % pt. diff.
Racial/Religiously Aggravated Offences	1.6	1807	2014	207	11.5	2.4		179	234	30.7	548	612	11.7	280	306	26	9.3	16	30	87.5	53	84	58.5	15.5	15.2	-0.3		8.9	12.8	3.9	9.7	13.7	4.1
Hate Crime HO Definition	3.8	3338	4303	965	28.9	2.3		336	466	38.7	966	1264	30.8	401	451	50	12.5	21	48	128.6	88	132	50.0	12.0	10.5	-1.5		6.3	10.3	4.1	9.1	10.4	1.3
Domestic Abuse	100.0	29803	29636	-167	-0.6	1.1		2362	2649	12.2	7485	7903	5.6	3499	3011	-488	-13.9	247	235	-4.9	813	733	-9.8	11.7	10.2	-1.6		10.5	8.9	-1.6	10.9	9.3	-1.6
- High Risk Domestic Abuse	100.0	2568	2954	386	15.0	1.8		175	294	68.0	597	848	42.0	738	710	-28	-3.8	53	59	11.3	189	192	1.6	28.7	24.0	-4.7		30.3	20.1	-10.2	31.7	22.6	-9.0
- Medium Risk Domestic Abuse	100.0	4055	3479	-576	-14.2	-0.3		268	336	25.4	887	985	11.0	938	644	-294	-31.3	54	52	-3.7	185	165	-10.8	23.1	18.5	-4.6		20.1	15.5	-4.7	20.9	16.8	-4.1
- Standard Risk Domestic Abuse	100.0	21684	21967	283	1.3	1.0		1735	1854	6.9	5555	5687	2.4	1641	1506	-135	-8.2	125	109	-12.8	390	338	-13.3	7.6	6.9	-0.7		7.2	5.9	-1.3	7.0	5.9	-1.1
- No Risk Assessment	100.0	1496	1236	-260	-17.4	-0.8		184	165	-10.3	446	383	-14.1	182	151	-31	-17.0	15	15	0.0	49	38	-22.4	12.2	12.2	0.1		8.2	9.1	0.9	11.0	9.9	-1.1
State Based Crime		Offences										Solved Outcomes								Solved Rates %													
Crime Type	% DA 2021	2020	2021	# diff.	% diff.	Z	CSS	1m Oct 20	1m Oct 21	Yr on Yr 1m % diff.	3m Oct 20	3m Oct 21	Yr on Yr 3m % diff.	2020	2021	# diff.	% diff.	1m Oct 20	1m Oct 21	Yr on Yr 1m % diff.	3m Oct 20	3m Oct 21	Yr on Yr 3m % diff.	2020	2021	% pt. diff.	Z	1m Oct 20	1m Oct 21	Yr on Yr 1m % pt. diff.	3m Oct 20	3m Oct 21	Yr on Yr 3m % pt. diff.
Drug Offences	0.0	7052	5950	-1102	-15.6	-0.7		525	425	-19.0	1540	1272	-17.4	6454	5323	-1131	-17.5	475	367	-22.7	1396	1117	-20.0	91.5	89.5	-2.1		90.5	86.4	-4.1	90.6	87.8	-2.8
- Trafficking of Drugs	0.0	1132	1278	146	12.9	-0.3		90	82	-8.9	274	272	-0.7	857	954	97	11.3	68	65	-4.4	213	199	-6.6	75.7	74.6	-1.1		75.6	79.3	3.7	77.7	73.2	-4.6
- Possession of Drugs	0.0	5920	4672	-1248	-21.1	-0.7		435	343	-21.1	1266	1000	-21.0	5597	4369	-1228	-21.9	407	302	-25.8	1183	918	-22.4	94.5	93.5	-1.0		93.6	88.0	-5.5	93.4	91.8	-1.6
Possession of Weapons	1.4	1411	1197	-214	-15.2	0.1		102	119	16.7	375	332	-11.5	817	701	-116	-14.2	61	63	3.3	209	186	-11.0	57.9	58.6	0.7		59.8	52.9	-6.9	55.7	56.0	0.3
Public Order	7.5	16079	17150	1071	6.7	0.1		1365	1601	17.3	4655	4926	5.8	2351	2287	-64	-2.7	175	155	-11.4	634	544	-14.2	14.6	13.3	-1.3		12.8	9.7	-3.1	13.6	11.0	-2.6
Miscellaneous Crimes against Society	14.4	3560	3360	-200	-5.6	1.1		288	286	-0.7	915	843	-7.9	789	603	-186	-23.6	70	44	-37.1	192	131	-31.8	22.2	17.9	-4.2		24.3	15.4	-8.9	21.0	15.5	-5.4

Crime Severity Score (CSS) - Based on the ONS Crime Severity Score which replaces the Cambridge Harm Index - data are for the 12 months to August 2021, (a total of 24 crime types have been ranked where scores are available).

The CSS excludes proactively generated crime detection by police i.e. State Based Crime, as these offences do not reliably measure harms experienced by the population. Rather, they measure the resources invested in catching offenders.

Yr on Yr 1m %/% pt. diff. - compares the month of October 2021 with the month of October 2020.

Yr on Yr 3m %/% pt. diff. - compares the three months to October 2021 with the three months to October 2020.

Z Score - Standard Score over 1.96 or under -1.96. Standard Scores are used to calculate the probability of an event occurring within a normal distribution; they are also used to compare two scores from different normal distributions (for example the number of offences per police District). In this document, Standard Scores are calculated in the following way: (current month's figure, minus the average figure per month over the previous three years) divided by the Standard Deviation of the same three year period. Standard Deviation is a measure to determine how spread out figures are from the average or "mean" a large standard deviation indicates the data is widely spread; if small, the data will be more clustered together.