

Performance and Resources Scrutiny Programme 2021**Report to: the Office of the Police, Fire and Crime Commissioner for Essex**

Title of Report:	Crime Prevention Strategy Report Q1
Classification of Paper:	Official
Agenda Number:	6.0
Chief Officer:	ACC Nolan
Date Paper was Written:	23/08/2021
Version Number:	V1.1
Report from:	Essex Police
Date of Meeting:	30/09/2021
Author on behalf of Chief Officer:	Insp 1162 Nikki Metson
Date of Approval:	03/09/2021

1.0 **Purpose of Report**

This report provides an update in relation to the progress of the Crime Prevention Strategy 2018-21 (herein 'the Strategy') for Q1 (April-June 2021).

2.0 **Recommendations**

No recommendations

3.0 **Executive Summary**

The Strategy prioritises crime prevention activity in nine key areas. Each of these areas has a thematic force lead, responsible for appropriate oversight, review, and focus to ensure appropriate action takes place within each thematic area, working to improve our response and ultimately prevent crime.

Covid-19 has undoubtedly led to significant challenges within many areas of policing. Q1 2021/22 saw further challenges as we progressed through the government roadmap out of lockdown, and now that all restrictions have lifted it is likely that this will again bring further challenges.

There is one strand currently at risk in relation to fraud however work is ongoing to mitigate this risk (see Section 6.3)

4.0 **Introduction/Background**

This report provides a structured update in relation to each of the nine thematic strands of the Crime Prevention Strategy 2018-2021:

- **Dashboard** of progress of the associated Delivery Plan.
- **Work strands at risk** and mitigating action leading to the transfer, tolerate, treat, terminate, or take the opportunity in relation to that risk.
- **Insights** to show/illustrate data insights for minimum of rolling 12 months up to end of last quarter.
- **Delivery achieved previous quarter** and the impact on data, outputs and/or outcomes.
- **Delivery schedule for current quarter** and the anticipated impact on data, outputs and/or outcomes and when this will be realised.

The report also includes updates in relation to any significant issues/challenges faced which do not sit within the nine strands of the strategy but are considered to be of particular relevance and therefore worthy of note.

5.0 Current Work and Performance

Delivery Plan progress across the 9 thematic strands can be summarised as:

	Total Strands	Complete	Ongoing/In progress	At risk
Domestic Abuse	20	0	20	0
Gangs and Knife Crime	43	26	17	0
Night-Time Economy (NTE)	24	13	11	0
Child Abuse and Exploitation	23	5	18	0
Extremism and Radicalisation	15	1	14	0
Hate Crime	35	15	20	0
Digital Crime and Fraud	41	8	33	1
Dwelling Burglary and Street Robbery	81	16	75	0
Serious and Organised Crime	23	15	8	0
Total	305	99	216	1

Thematic Strand Updates:

Domestic Abuse

Thematic Lead: Chief Superintendent Tom Simons

Delivery Plan progress dashboard:

Delivery Plan Progress	2020/21				2021/22			
	Q1	Q2	Q3	Q4	Q1	Q2	Q3	Q4
Total strands	60	60	65	72	20			
Complete	41	47	43	50	0			
Ongoing/ In progress	18	13	22	22	20			
At risk	1	0	0	0	0			

Identified risk:

There are no strands identified as being at risk at this time.

The delivery plan has been redrafted during August 2021 with redundant actions having either been completed, consolidated, or removed. Progress is overseen through the Domestic Abuse Governance Board (DAGB), chaired by Chief Superintendent Simons.

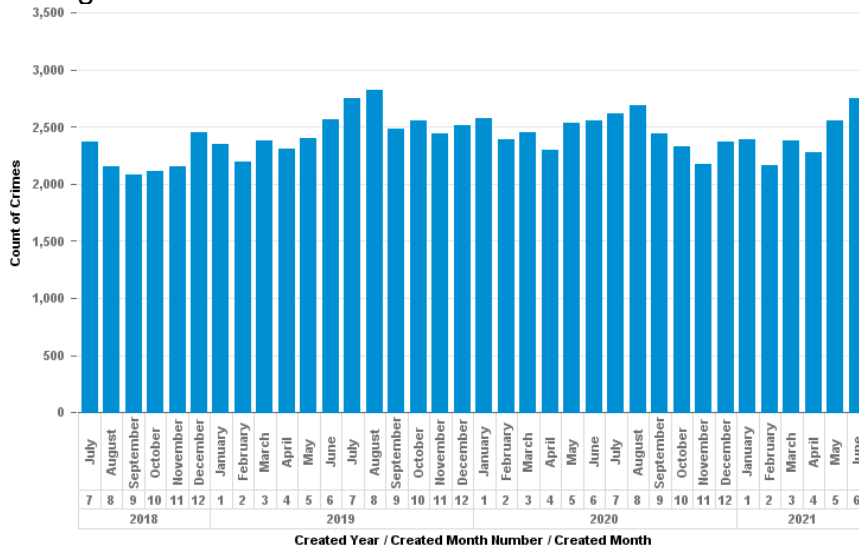
Key recommendations and learning at a national level are recorded and monitored within this plan as we continue to develop our response in this area.

Insights:

Data for 12 months to end of June 2021, in comparison to the previous 12 months:

12 Month ending June 20	12 Month ending June 21	Diff.	% Diff.
30345	29103	-1242	-4.1%

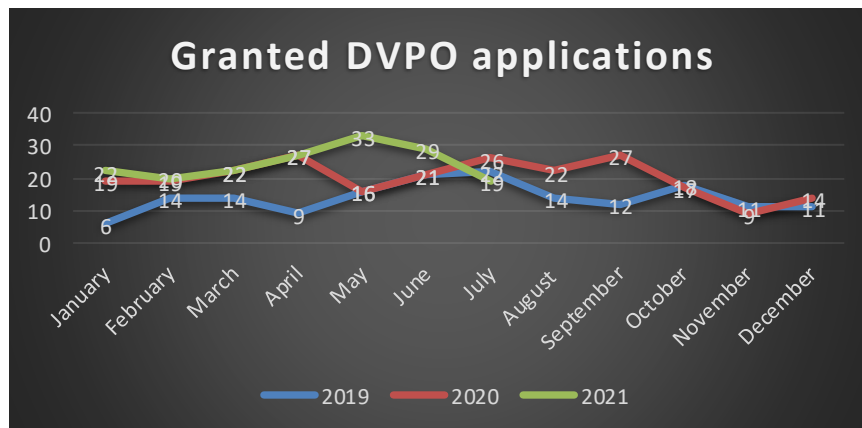
Bar chart showing crimes recorded each month:



As anticipated, Domestic Abuse has increased over the last quarter in line with seasonal demand, however a wider reduction across the 12 month period can be seen which is primarily attributable to lockdown restrictions as a result of COVID-19. Significant focus is now being placed on maintaining our performance around Domestic Abuse more widely as calls for service increase with the force wide initiative DA today (additional resourcing and oversight around attendance and incident management) having been introduced.

DVPOs

The volume of DVPO’s granted increased in the last quarter before experiencing a drop in July. There continues to be a drive through ‘CONSIDER’, governed via the Domestic Abuse Governance Board.



Suspects

Our outstanding suspects have increased, likely attributed to the anticipated peak in demand during the Summer months and the release of lockdown restrictions. This is monitored through the DA Governance Board and the Offender Management Board.

	Oct 2020	Nov 2020	Dec 2020	Jan 2021	Feb 2021	Mar 2021	Apr 2021	May 2021	Jun 2021	Jul 2021
North LPA	192	190	214	243	187	178	232	229	264	294
South LPA	154	147	130	133	112	122	136	162	192	210
West LPA	172	190	181	203	180	170	195	165	186	198

Essex Police has invested significantly in its wider prevention activity and in a DA setting, the DA Problem Solving Teams are now fully embedded. Clear focus is placed, through these teams, on supporting the most vulnerable victims (in partnership with MARAC and the Central Referral Unit), managing acute cohort offenders, order enforcement and partnership problem solving.

Delivery achieved previous quarter:

- Domestic Abuse has now been accepted as part of the Strategic Assessment and now features within the Control Strategy. This means that analysis is provided to support front line teams within the Tasking process – meaning greater resource application and focus around those individuals and locations associated with the highest harm.
- In the North LPA, a DA Scrutiny Panel has been set up to understand where improvements can be made and improve outcomes for victims.

Delivery scheduled for current quarter:

- This quarter will see all frontline staff refreshed on their Domestic Abuse Training commencing on the 1st September.
- A Preparedness Plan has been drawn up and work has commenced to ascertain the impacts of the DA Act 2021.

5.2 Gangs and Knife Crime

Thematic Lead: Detective Superintendent Rob Kirby

Knife Crime**Delivery Plan progress dashboard:**

Delivery Plan Progress	2020/21				2021/22			
	Q1	Q2	Q3	Q4	Q1	Q2	Q3	Q4
Total strands	13	13	13	15	19			
Complete	7	7	10	10	10			
Ongoing / In progress	6	6	3	5	9			
At risk	0	3	0	0	0			

Strands at risk:

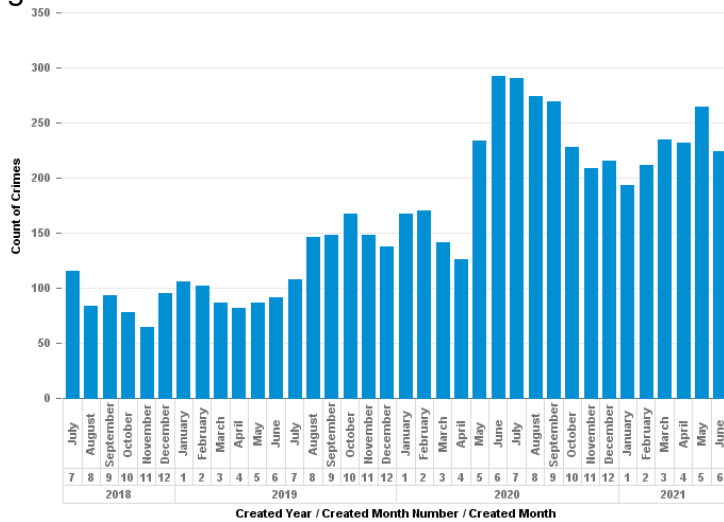
There are no strands identified as being at risk at this time.

Insights:

Data for 12 months to end of June 2021, in comparison to the previous 12 months:

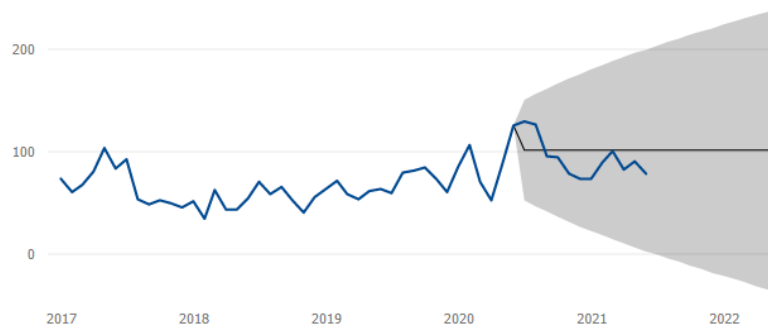
12 Month ending June 20	12 Month ending June 21	Diff.	% Diff.
1985	2845	860	+43.3%

Bar chart showing crimes recorded each month:



The graph below shows how Knife Enabled Crime has broadly followed a pattern of lockdowns during early 2020 when it dipped sharply, followed by an increase in mid-2020 (after a period of ceasing lockdown) then followed by a decrease again during the end of 2020. The rise in 2021 has not been as significant as expected.

Monthly Trend (forecast pre-knife recording change)

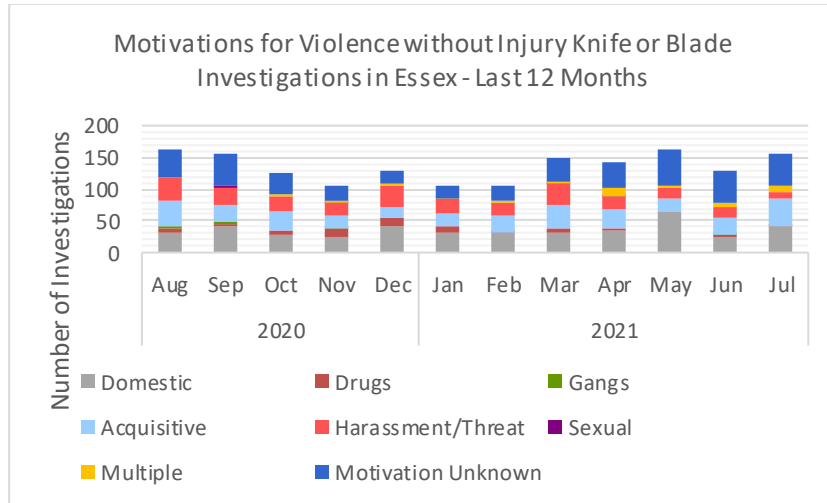


The graph below show instances of community violence (involving all kinds of violence) which have returned to normal levels post lockdowns.

Monthly Trend and 12-Month Forecast



The chart below shows the motivations behind knife or blade investigations. The table identifies the main motivations for knife related matters are domestic, acquisitive and harrassment/threat with a large proportion also 'unknown'.



Delivery achieved previous quarter:

Op Grip is Essex Police’s ‘place’ strategy to reduce community violence. 67 Harm spots have been identified in seven major towns across all parts of Essex. This has been achieved with academic research highlighting the areas where most street violence occurs. The purpose is to regularly enter these harm spots with activities such as business checks, routine and directed patrol, stop searches, and quality of life improvements. This commenced in June 2021. There have consistently been over 500 interactions in those harm spots each week. This scheme has been Home Office funded and is highlighted as a case study in the UK Governments Crime Plan.

Delivery scheduled for current quarter:

Knife Crime Violence model – This is a University of Essex verified model where four years of data is used to predict who is most likely to be involved in serious violence using a knife. Initial trials start on 13th July in Chelmsford highlighting a cohort of 20 people. It is a multiagency preventative approach with no pursue element. The ethos is to initiate contact with the people, identify their vulnerabilities and work to address this in order to divert from criminality.

Prevent, Prepare, Protect Team – The PPP team will be introduced in September 2021, who’s role will be to:

- Work in a public health approach to target and reduce the drug dependency market in Essex.
- Reduce exploitation, harm and violence emanating from Gangs/County Lines.
- Work with the Violence and Vulnerability Unit (VVU) and other key partners to give a professional and consistent safeguarding approach to children and vulnerable adults exploited by Gangs and County Lines in Essex.
- Work with the SVU Pursue teams to mitigate the effects of proactive policing and enforcement, where power vacuums can result, planning for the safe return to normality, looking to suppress any consequential violence and harm

Gangs / County Lines

Delivery Plan progress dashboard:

Delivery Plan Progress	2020/21				2021/22			
	Q1	Q2	Q3	Q4	Q1	Q2	Q3	Q4
Total strands	23	23	40	19	24			
Complete	11	11	22	16	16			
Ongoing/ In progress	10	10	17	3	8			
At risk	2	2	1	0	0			

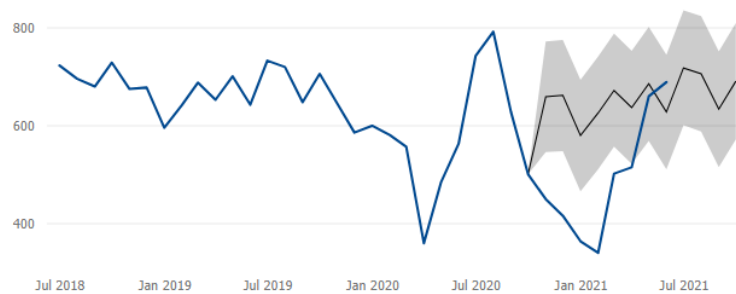
Strands at risk:

There are no strands identified as being at risk at this time.

Insights:

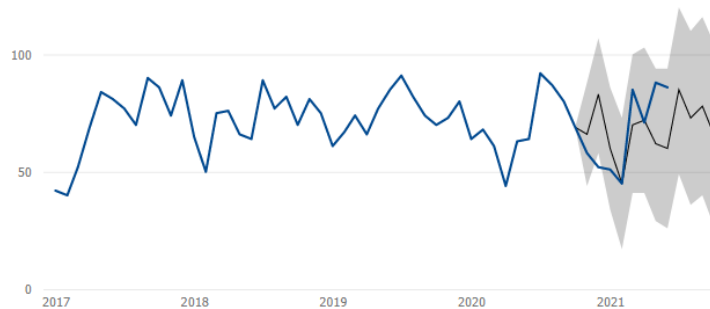
The graph below shows Community violence which has dropped and risen throughout 2020 in line with COVID lockdowns. Community violence has risen back in line with pre COVID levels, but has not surpassed it.

Monthly Trend and 12-Month Forecast



In a similar pattern, serious violence including attempted murder and GBH (non domestic related) has returned to pre COVID levels.

Monthly Trend and 12-Month Forecast



Delivery achieved previous quarter:

During Q1 the Serious Violence Unit (SVU) achieved the following:

- 130 arrests
- 47 warrants executed
- 79 suspects remanded in custody
- £183,000 cash seized
- 15 gang injunctions obtained
- 15 court orders to remove drug number from network
- 22 people safeguarded

89% of suspects in the last 12 months were remanded in custody after arrest compared to 21% for the last three years. The average sentence for the last 12 months was 4.9 years compared to 1.4 years for the previous three years. This has been assisted by maximising the use of technology to progress investigations more quickly whilst suspects are in custody, thereby reducing the need for bail.

Delivery scheduled for current quarter:

- Continued Serious Violence Unit focus on Gangs and County Lines, continually looking to pursue and dismantle, targeting those who cause the most harm identified through intelligence. This includes cross force, regional and national liaison.
- Instigation of the of the Prevent, Prepare and Protect Team (PPPT) within the SVU. The new team will adopt a partnership approach to longer term safeguarding and the diversion of children away from gangs and county lines. This will be in direct correlation with all SVU pursue work when children are located or identified through proactivity and enforcement stages.
- Continued investment in the approach to tackling gang crime and County Lines, using the best analytics and software to digitally equip and enable the team.
- Development of intelligence regarding the gangs and county lines causing the most harm by identifying those causing children to go missing and those targeting vulnerable adults via the PPPT and intelligence unit.

5.3 Night-Time Economy (NTE)

Thematic Lead: Superintendent Stuart Weaver

Delivery Plan progress dashboard:

Delivery Plan Progress	2020/21				2021/22			
	Q1	Q2	Q3	Q4	Q1	Q2	Q3	Q4
Total strands	24	24	25	26	24			
Complete	1	11	13	14	13			
Ongoing / In progress	23	13	12	12	11			
At risk	0	0	0	0	0			

The Night Time Economy Harm Reduction Group continue to meet and update the force wide 4P plan. The delivery plan is centred around the objectives set out in the Crime Prevention Strategy.

Strands at risk:

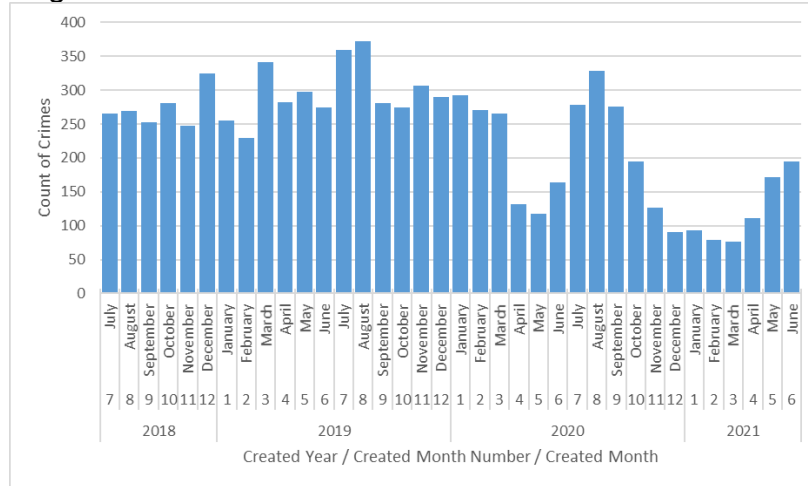
There are no strands identified as being at risk at this time.

Insights:

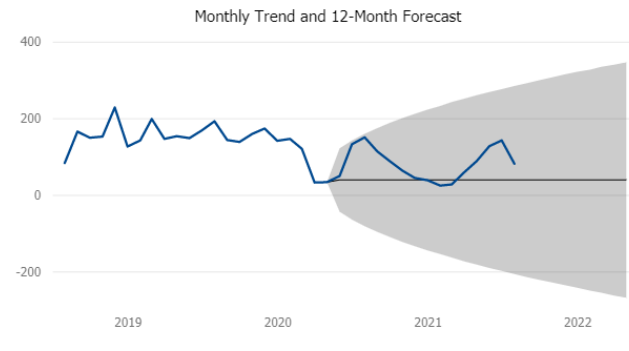
Data for 12 months to end of June 2021, in comparison to the previous 12 months:

12 Month ending June 20	12 Month ending June 21	Diff.	% Diff.
3127	2022	-1105	-35.3%

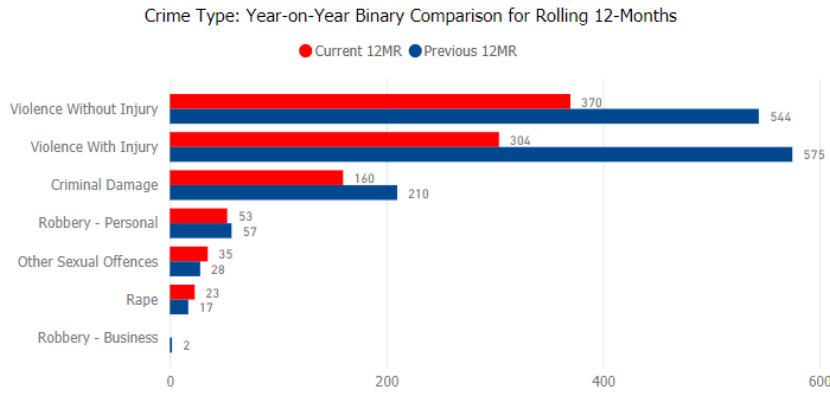
Bar chart showing crimes recorded each month:



The interactive dashboard is complete and available with Power Bi, meaning Insights are instant. It is hoped that accessibility to this dashboard among the partnerships will be delivered as part of the Analytics for Everyone programme, (currently accessible by the NTE Harm Reduction Group and District Commanders). The last 3-month period shows a consistent rise in the data as we exit lockdown and see the reopening of NTE premises. However, it is positive to note that these increases are lower than the previous years' numbers. Harm remains concentrated spatially, repeat victimisation rare and risky behaviours most linked to alcohol harm. The dashboard is used to inform the recent Homicide Prevention Plan, NTE section and vulnerable places continue to be the focus of NTE deployments and local 4P plans. We have also seen Operation Grip focus patrols aimed at the NTE areas of high harm.



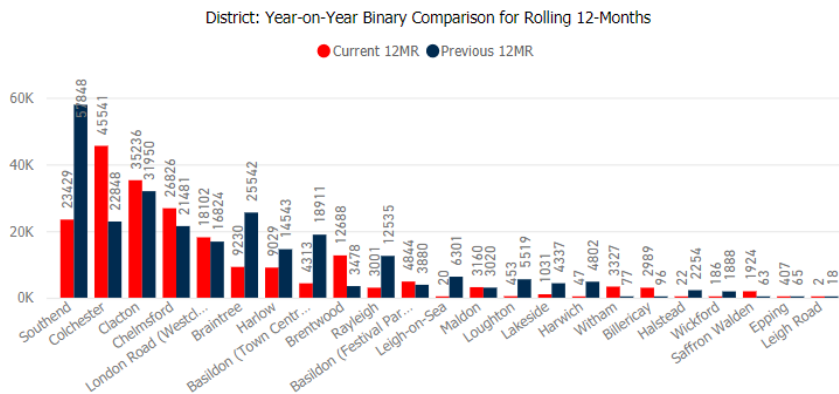
The above graph shows an obvious decline (offences) during the pandemic and then an increase from early 2021. There is then a drop in offences to date and we are in a positive position compared to the height of 2019.



The year on year comparison is also positive with violent crime considerably lower. This should be expected due to the NTE having been very much affected by the pandemic and it would be reasonable to see an increase now that we return to the new normal of the NTE. It will be interesting to understand what changes the NTE will see moving forward, e.g. have people's habits changed during the pandemic?

The concerning factor is the increase of both rape and other sexual offences. The NTE plans for all districts have been reviewed and there is an expectation that vulnerable locations and identification of vulnerable members of the public will form part of the 'patrol plan'.

A bid has been submitted to seek funding from the 'Safety of women at night' fund. Accompanied to this bid were a series of tactics that will be employed. Additionally, Operation Grip will target these vulnerable locations and/or persons using the analytical data.



The above table shows the year on year comparison for each district. Of note, Colchester, Chelmsford, and Clacton are showing a higher comparison than other areas (including Southend).

The below table refers to the distribution of offences to date -

NTE area: distribution of offences last 24mr

Southend 470	Chelmsford 335	London Roa...	Harlow	Basild...	Lake...
		152	118	95	79
Colchester 371	Clacton 234	Basildon (Festi...	Rayleigh	Lei...	Ep...
		68	45	30	29
		Brentwood	Lought...	Witham	
		67	39	Hal...	
		Braintree	Maldon	Harwich	Wic...
		61	39	Saffron ...	

The chart below outlines outcome ratios against frequency.

This shows a decline in solved rate and at the same time an increase in the number of victims not willing to support police action.

Outcome Ratios (Frequency)

Outcome Groups	2018	2019	2020	2021	Total
Solved	16.2%	13.0%	15.0%	10.9%	13.9%
Other	43.6%	42.2%	41.4%	44.2%	42.5%
Victim does not Support	40.2%	44.8%	43.6%	44.9%	43.6%
Total	100.0%	100.0%	100.0%	100.0%	100.0%

The chart below focusses on outcome ratios against harm –

Outcome Ratios (Harm)

Outcome Groups	2018	2019	2020	2021	Total
Solved	17.3%	16.7%	17.6%	23.7%	17.6%
Victim does not Support	32.8%	39.6%	32.0%	37.9%	36.4%
Other	49.9%	43.7%	50.4%	38.4%	46.0%
Total	100.0%	100.0%	100.0%	100.0%	100.0%

There is positive movement on the solved rate with a very good increase from 17.6 to 23.7%.

Delivery achieved previous quarter:

- Monitor the changing data landscape during COVID re-opening for flexible deployment plans as hot spots that have traditionally been stable are fluctuating significantly. All NTE areas have revised their plans and been signed off.
- A dedicated media strategy was developed to coincide with the full reopening of the NTE to address the issues around NTE crime and Disorder. This focuses on alcohol moderation, responsible behaviour, journey planning and the consequences of criminal activity.
- Work with Contact management Command to increase the tagging of alcohol/drugs markers on NTE crime to provide a richer dataset and allow more effective harm prevention (remains ongoing).

Delivery scheduled for current quarter:

- NTE plans will be reviewed to understand effectiveness against the reopening of the NTE venues.
- Licencing work (following incidents and performance data) will continue to allow us to identify and deal with problem premises and take enforcement action as required.
- CPT and TCT engagement with licenced premises as required in the overarching NTE plan.
- Plan for test purchase operations 'post COVID' in all primary NTE areas in Q2 21/22 (ongoing)

5.4 Child Sexual Abuse and Exploitation

Thematic Lead: Detective Chief Superintendent Andy Packer

Delivery Plan progress dashboard:

Delivery Plan Progress	2020/21				2021/22			
	Q1	Q2	Q3	Q4	Q1	Q2	Q3	Q4
Total strands	29	26	33	29	23			
Complete	12	7	18	9	5			
Ongoing / In progress	17	19	15	20	18			
At risk	0	0	0	0	0			

Strands at risk:

There are no strands identified as being at risk at this time.

Insights:

- 1% of secondary school population (139,628) known to youth offending services.
- 992 children reached and supported through voluntary sector work 2020/21
- Management of Sexual or Violent Offenders (MOSOVO) maintain a 100% target for High/Very High Risk offender visits. Funding for MOSOVO included triaging equipment/home monitoring software for Registered Sex Offenders (RSO).
- Police Online Investigation Team (POLIT) received 240 referrals from the National Crime Agency (NCA), and 25 from Regional Organised Crime Units in relation to Essex. POLIT executed a total of 294 warrants, 289 children were safeguarded by submission of PP57 referrals to social care.
- POLIT used the polygraph on 21 occasions and all candidates made disclosure around sexual thoughts, fantasies, activity, contact direct or online.
- Child Sexual Exploitations (CSE) increase of 6% and a slight reduction in Child Criminal Exploitation (CCE) of 6% of all young people with CE Social Care flags.
- Online CSE/CA contact increased during lockdown. For CSE this can be sharing of images and content and in CCE as a cyber enabled crime to exchange funds etc. Online Exploitation Campaign with ESCB conducted to highlight this. Year on Year it has increased and in the last year CSE technologically based investigations increased by 16%.
- Peer on peer exploitation in schools became more apparent. Op Hydrogen/Op Hydrant continues to monitor this, in an agreed process with partners,
- C&PP Operations Centre Intel Team received on average over the last 6 months 38 referrals to develop into proactive enquires from the NCA with a spike of 63 in June (end of lock down) and an average 10 referrals a month from other Forces. This is an upward trend.

- C&PP Operations Centre Child Triage Team received on average over the last 6 months 230 child triage referrals which resulted in 63 requests to attend CSE Multi Agency strategy meetings an increase from a 6-month average of 42 from the last reporting period. Spikes similar to NCA referrals in line with changes in lockdown procedures. 100% of Strategy Meetings were managed by the team.
- C&PP Operations Centre CSE Team received, over the last 6 months, 31 referrals for CSE/CCE risk assessment. With spikes as above. 100% of Strategy Meetings were managed by the team.
- CSE Proactive Team¹ identified the first exploitation Organised Crime Group. This identified disruption opportunities with HMRC, Trading Standards and the Gangmasters and Labour Abuse Authority (GLAA).
- QUEST team² - Three trials have gone ahead with guilty verdicts. Due to the backlog in the Courts caused by COVID-19, some trials are not listed until 2022/3.
- Achieving Best Evidence (ABE) Group set up to improve interview quality when dealing with most vulnerable.
- Op Yalta in progress with partners, identifies victims at risk of repeat victimisation of sexual offences including rape. Includes child victims. One officer now deals with all investigations for victim and provides better safeguarding
- MPLO's (Missing person Liaison Officers) gaining the trust of persistent missing children has resulted in disclosure of assaults, drug running and trafficking, leading to referrals and arranging new placement with social care.
- West Essex Drugs gangs have had 11 phone numbers shut down. Working with the telephone network companies and courts, they secured the Drug Dealing Telecommunications Restriction Orders following identifying phone numbers offering cocaine and cannabis for sale in Thurrock and Brentwood.
- COMPACT and PNC flags in use to quickly identify vulnerability/exploitation of missing children.
- OCAAG Tag developed and in use on Athena to identify online vigilante groups.
- County Lines/Gangs training package delivered force wide and now undertaken as part of probationer training.

Delivery achieved previous quarter:

- 92 investigations classified as CSE. Of these 26 were filed due to risks being negated through work with partner agencies.
- Op Encompass³ remains active in Thurrock and Southend, with work continuing with schools in the Essex area to achieve countywide consistency.

¹ The CSE Proactive Team was introduced in July 2020 to investigate the most serious complex and organised CSE. The team was set up to deal with those children most at risk of harm, but also pursue and disrupt those Perpetrators who cause the most risk.

² The QUEST Team was set up in February 2019 dedicated to the investigation of non-recent Rape or Assault by penetration offences on children, where the victim is now an adult and other certain criterion apply.

³ Op Encompass is a national operation that connects the Police with schools to secure better outcomes for children who are subject or witness to police-attended incidents of domestic abuse.

- Operation Makesafe⁴ package delivered in May/June 2021 to Hotel/B&B establishments, with partners providing training to hotel staff around recognising signs of CSE/Child Abuse/Missing and taking subsequent action.
- Op Henderson⁵ successfully carried out with partners in June.
- Force Firearms, Shotguns and Explosives Licencing (FSEL) - Investment in improved links between the FSEL and primary care GP surgeries aimed to improve information sharing and reduce the risk regarding firearms licence holders deteriorating Mental Health / Suicide risk.
- Child Abuse Investigation Team (CAIT) secured 30-year prison sentence following a two-and-a-half-year investigation into father committing 18 counts of sexual abuse against own stepdaughter.
- CSE Proactive team tracked an Op Ratify Nominal believed to be meeting a young female out of force. Tracked to an address in Manchester where located with a 17-year-old female in breach of bail conditions.
- Op Gizmo is an ongoing investigation into a drugs line being run around Thurrock. Through that a 17-year-old male, moved out of Newham to Thurrock as he was at risk, identified as being a runner and found with crack and heroin. Currently under the Youth Offending Team, being safeguarded.
- POLIT received 94 referrals, executed 65 warrants, and safeguarded 81 children.
- POLIT conducted 5 Polygraph tests Apr-May 2021 - 3 tests resulting in significant responses.
- An RSO missing since 2012, wanted for Indecent Image offending, was extradited from Italy in May and is currently on remand awaiting trial.
- POLIT, in June, bailed a suspect for IIOC offences, following a no comment interview. The OIC identified concerning images of suspect's daughter when examining suspect's phone and further arrested the male. During interview he admitted to abusing his two-year-old son, offences that we were not aware of and had no evidence to support at the time. CPS authorised 22 charges and the male is awaiting sentencing having pleaded guilty at court.

Delivery scheduled for current quarter:

- **Op Insect**, this is a joint MOSOVO/ Community Policing Team proactive operation to tackle Registered Sex Offenders' at holiday locations and large events such as the Clacton air show. Funding being sought.
- **Quarterly online exploitation campaigns** to coincide with week prior to school holidays- reinforce safety messaging to schools/parents/carers/children with 450 of 600 schools engaged with these.
- **Missing Problem Profile** focusing on missing children, being developed with Force analysts, and presented to the SET CE Board in 2021.
- **MOSOVO course** to ensure staff have improved training including a focus on Digital Devices, Active Risk Management System (ARMS) and Civil Orders currently being developed in with Kent.
- **MOSOVO Op Intern-** Increased visits and joint CPT working due to School holidays/Tourism.

⁴ (previously known as Operation KIRN) - is a joint initiative with Essex Safeguarding Children's Board around educating hoteliers and similar accommodation providers within the county, around recognising the signs of CSE

⁵ focusing on transport hubs in the County raising awareness of child exploitation and missing children

- **MOSOVO** in September are supporting SCD in a national *Operation Aident* targeting CSE. Fifteen high risk convicted child groomers receive extra visits using technology to ensure not a risk to children.
- **POLIT** have recruited more staff making them fully staffed by September.
- **Child Protection forms** for taking children into Police Protection, a working group has been established for further consideration around adoption of a FREVVO form in Essex.
- **CSE** Team officer has begun work on a “What to expect from professionals” video for victims of serious sexual violence.
- **Trauma ID and Management** training for all Essex Officers and staff being rolled out across the force.

5.5 Extremism and Radicalisation

Thematic Lead: Superintendent Richard Melton

Delivery Plan progress dashboard:

Delivery Plan Progress	2020/21				2021/22			
	Q1	Q2	Q3	Q4	Q1	Q2	Q3	Q4
Total strands	15	15	15	15	15			
Complete	4	1	1	1	1			
Ongoing/ In progress	11	14	14	14	14			
At risk	0	0	0	0	0			

In addition, EP and ERSOU are required to update a CTLP Action Tracker:

	Essex CTLP				
	May 2020	July 2020	September 2020	January 2021	April 2021
Unallocated / Not progressed	3	0	0	0	0
Deferred	N/A	0	0	0	0
Ongoing / In progress	5	0	0	0	0
Complete	22	25	25	25	25
Not accepted/No Longer Required	3	8	8	8	8

Strands at risk:

There are no strands identified as being at risk at this time.

Insights:

145 referrals received between April and June. This is a good increase from Q4 where 107 were raised. There is a strong suggestion that the rise has come through more referrals received this quarter from Education.

In line with the introduction of the third national lock down, all other forces in the region saw a decline in the PREVENT referral activity with the exception of Essex where we increased by from 30 to 38 referrals. Year on year volumes in Essex have remained consistent and level with all sources recording an increase in referrals; excluding education, some of which have only just returned – before immediately going on summer breaks.

Referral to case conversion in Essex at the end of Q1 stands at 41%(n=14) of referrals progressed into the Channel or Police led space and of those, 1% were escalated to Counter Terror Police to deal with. None are currently being assessed and 50% (n=17) were closed prior to full case management.

Delivery achieved previous quarter:

The main Q1 activity has been in the delivery of the Prevent Training Matrix:

- Sustained 98 internal and additionally 66 external Prevent Champions
- Media article published that has led to internal Prevent Champions being identified across range of commands - LPT, CPT, CID, DAIT, all OPC teams, FCR, Media, Executive Support, PSD.
- External Prevent Champions identified across a range of partners - Local Authority, Children Services, Health, CRC, NPS, Education (schools, FE & HE), Community Safety Partnership Managers, Housing.

Delivery scheduled for current quarter:

The main activity for Q2 is in the following areas:

- Planning for Op Geopony (CT exercise) is underway with a plan to test in January
- Continued development of Op Javelin presentation to Contest Board to facilitate cross partnership learning and improvement for estate and IT/telephony security
- Review of SET Channel Panels ToR and self-assessment against new Home Office Guidance

Anticipated impact will realise:

- increased opportunities to identify those at risk of radicalisation
- strengthened links to communities for proactive and reactive responses
- increased number of appropriate referrals across wider sources
- increase community cohesion/decrease tensions and hate crime

5.6 Hate Crime

Thematic Lead: Superintendent Richard Melton

Delivery Plan progress dashboard:

Delivery Plan Progress	2020/21				2021/22			
	Q1	Q2	Q3	Q4	Q1	Q2	Q3	Q4
Total strands	30	30	30	35	35			
Complete	15	15	15	14	15			
Ongoing/ In progress	15	15	15	21	20			
At risk	0	0	0	0	0			

Strands at risk:

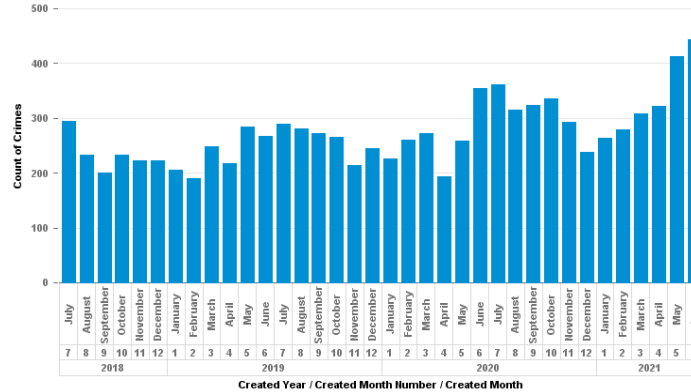
There are no strands identified as being at risk at this time.

Insights:

Data for 12 months to end of June 2021, in comparison to the previous 12 months:

12 Month ending June 20	12 Month ending June 21	Diff.	% Diff.
3134	3896	762	+24.3%

Bar chart showing crimes recorded each month:



The above data has been obtained from the crime dashboard which is in its final stages of assessment before going 'live' for operational use. There have been a combination of 2879 recorded hate crimes and hate incidents during the rolling 12 month period to August 2021, which represents an 8.5% increase on the same period last year. This increase is in keeping with the national picture and demonstrates more victims have the confidence to come forward and report hate crime incidents & offences to police.

Delivery achieved previous quarter:

- Racial offences continue to represent the most significant percentage of all recorded hate crime so far in 2021 with 1794 out of the total 2879 hate crimes and incidents reported so far being classified as being racially motivated. This equates to 62.3% of the overall reported volume leading to 2788 victims and 91 Regina offences.
- 323 racial hate crimes have been committed so far in 2021 against victims who identified as African, Caribbean or 'Other black background', which equates to 11.58% [YTD] of all racial crime reported so far in comparison to 14% in total in 2020. The death of George Floyd and the subsequent Black Lives Matter prominence contributed to the increase in reported offences throughout 2020 along with improvements being made in recording self-defined ethnicity. We will likely see similar year end totals at the end of 2021.
- Disability hate crimes remain second highest in terms of volume with 408 offences recorded (14.2%) closely followed by Homophobic hate crime with 391 offences (13.5%).

Delivery scheduled for current quarter:

- Gender based reporting went live in Q1 and will see Essex Police recording crimes motivated by gender hatred. Essex is one of 11 other forces currently recording this level of detail with a view to better understanding violence, abuse and intimidation against women and girls across the county.
- Review of the education package delivered by ECFRS to children across schools in Essex is planned in august.

- The Strategic Hate Crime Partnership board continues to meet, and it is likely will expand its discussion focus to include VAIWG and ASB going forward. ECC are going to be taking over the secretariat and the replacement OPFCC funded hate crime partnership co-ordinator will be recruited once further funding has been agreed (likely later autumn).

5.7 Digital Crime and Fraud

Thematic Lead: Detective Chief Inspector Stuart Truss

Cyber / Online Offences

Delivery Plan progress dashboard:

Delivery Plan Progress	2020/21				2021/22			
	Q1	Q2	Q3	Q4	Q1	Q2	Q3	Q4
Total strands	40	40	40	40	17			
Complete	18	18	18	18	2			
Ongoing / In progress	22	22	22	22	15			
At risk	0	0	0	0	0			

Strands at risk:

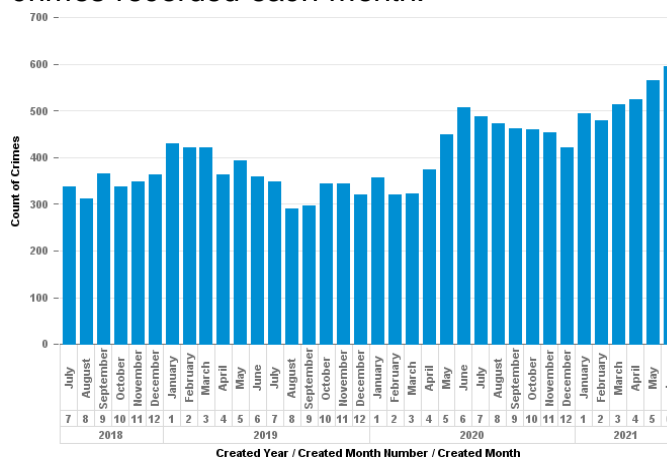
There are no strands identified as being at risk at this time.

Insights:

Data for 12 months to end of June 2021, in comparison to the previous 12 months:

12 Month ending June 20	12 Month ending June 21	Diff.	% Diff.
4269	5922	1653	+38.7%

Bar chart showing crimes recorded each month:



There continues to be a steady increase in the number of cyber-crime offences. This is further compounded by the fact that cyber offending is largely under-reported.

Social activity online has increased – firstly due to more time being spent in the home, including home-working; secondly, there is wider accessibility to digital media and online capability. This means the vulnerability to cyber-attack has increased.

The largest increases have been to social media hacking and online stalking offences. This reflects widescale increases to the use of social media and the number of sites offering this capability.

Also, Essex has reported a decrease in the number of fraud reports (despite a national increase). It is recognised that many fraudsters are now moving their offending online; meaning many fraud offences will now fall under the heading of 'cyber-crime', thus causing an increase.

Delivery achieved previous quarter:

- Essex continues to work with ERSOU on the development of the Eastern Region's Cyber Resilience Centre (CRC). Despite resistance from the Essex Chamber of Commerce, they are now fully engaged with the concept and are further promoting the application of businesses to the project.
- Essex has engaged a number of businesses in the national Cyber Alarm project through Prevent & Protect advice. This allows a proactive response to attempted cyber attacks on businesses.
- Due to several reported cyber attacks on businesses, Essex Cyber Crime Unit has carried out a number of warrants across Essex and bordering forces seeking to protect other businesses from attack.

Delivery scheduled for current quarter:

- Essex Cyber Crime Unit is developing a package which will help them work towards ISO accreditation. This will allow them to carry out scene examinations of digital devices, complying with national standards.
- Utilise cyber volunteers to identify students who show good knowledge around computer viruses and malware. Then seek to direct their skills positively so as to minimise the risk of them considering a path of cyber offending.

Fraud

Delivery Plan progress dashboard:

Delivery Plan Progress	2020/21				2021/22			
	Q1	Q2	Q3	Q4	Q1	Q2	Q3	Q4
Total strands	24	24	24	24	24			
Complete	7	7	7	7	6			
Ongoing / In progress	17	17	17	17	18			
At risk	1	1	1	1	1			

Strands at risk:

There is one strand currently believed to be at risk:

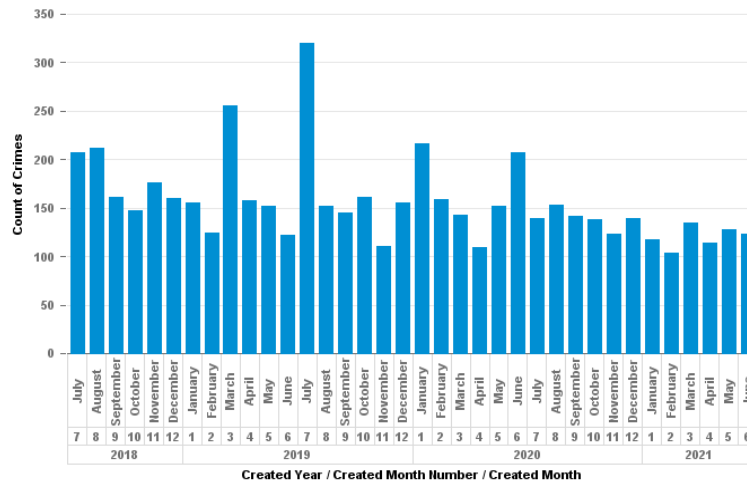
- Identifying enforcement opportunities for ancillary orders (e.g. Serious Crime Prevention Orders (SCPO's)) – It is acknowledged that insufficient actions are currently being completed with regards to persons subject of SCPO's. However, this is being considered as part of the Intelligence Review.

Insights:

Data for 12 months to end of June 2021, in comparison to the previous 12 months:

12 Month ending June 20	12 Month ending June 21	Diff.	% Diff.
2030	1555	-475	-23.4%

Bar chart showing crimes recorded each month:



The City of London, as the national lead force for fraud, continue to report increases nationally in the number of frauds being reported. However, this does not appear to be reflected in Essex.

Along with the changes to social habits brought about by the COVID pandemic, it is also assessed that much fraud has now moved online, meaning fraudsters are using digital means by which to commit crime. This may give some indication as to why there has been a large increase in cyber offending. Furthermore, online fraud can be committed from anywhere in the world. As such, where Action Fraud establish offences have been committed from outside the UK, they are less likely to refer cases to Essex Police for investigation; thus, having an impact on Essex crime data.

Whilst the number of frauds appear to be decreasing, the level of complexity for investigators is increasing.

With regards to crime prevention, the work of the Fraud Co-ordinators and Prevent & Protect Officers continues to maximise opportunities to prevent repeat victimisation.

Delivery achieved previous quarter:

- SECU have successfully introduced proactive days which are carried out at least monthly. SAR’s reports are utilised to direct activity and ‘cease and desist’ notices issued where appropriate.
- In line with national operation, Otello, focus has been placed on romance fraud offences. During this period, Essex Police have: (i) developed an advice leaflet circulated to the public, and (ii) created a victim’s support group with online sessions being held.

Delivery scheduled for current quarter:

- There will be continued focus on Operation Otello activity as directed by City of London. This will include a review of all active romance fraud investigations in Essex, with a period of intensification on those cases.
- There will be an introduction of a new fraud victim care model. This will involve the National Economic Crime Victim Care Unit taking responsibility for

the management of low risk victims in Essex; thus allowing more targeted focus by the Fraud Co-ordinators on medium and high risk victims.

- Essex Police are working with Trading Standards to develop a multi-agency working group tackling door-step fraud – rogue traders and courier fraud. Funding is being sought to create a single location from which key partners can work collectively.

5.8 Dwelling Burglary and Street Robbery

Thematic Lead: Chief Superintendent Simon Anslow

Delivery Plan progress dashboard:

Delivery Plan Progress	2020/21				2021/22			
	Q1	Q2	Q3	Q4	Q1	Q2	Q3	Q4
Total strands				81	81			
Complete				6	16			
Ongoing/ In progress				75	75			
At risk				0	0			

(A delivery plan was developed in Q3 therefore no figures prior to Q4)

Strands at risk:

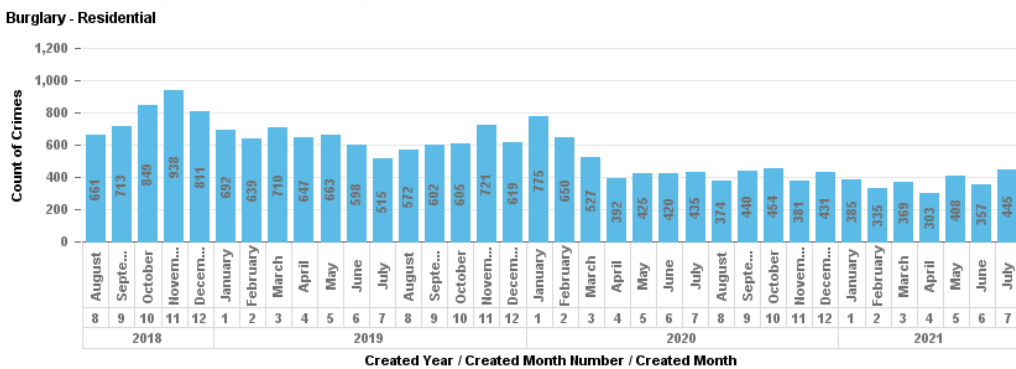
There are no strands identified as being at risk at this time.

Insights:

Data for 12 months to end of June 2021, in comparison to the previous 12 months:

Offence Type	12 Month ending June 20	12 Month ending June 21	Diff.	% Diff.
Dwelling Burglary	4773	3093	-1680	-35.2%
Street Robbery	1326	1205	-121	-9.1%

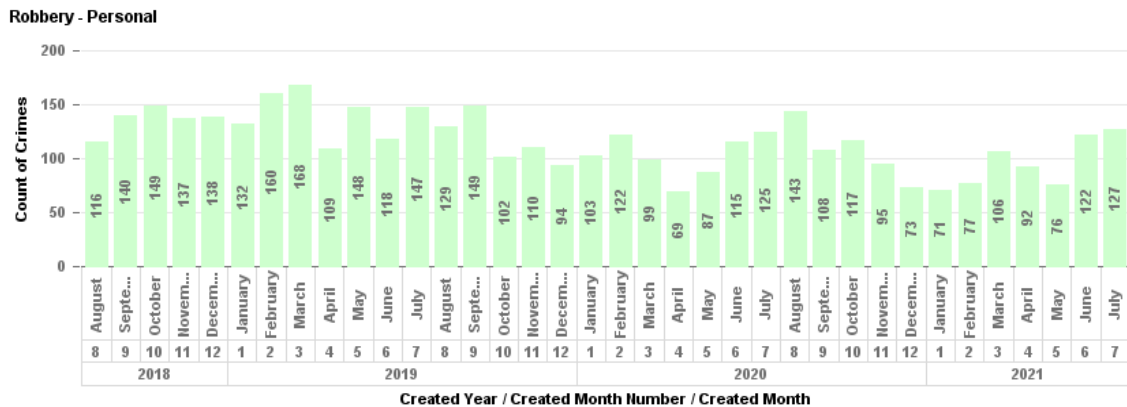
Bar chart showing dwelling burglary crimes recorded each month:



Burglary Residential Dwelling offences have remained relatively steady from Q4 (January to March 2021) to Q1 (April to June 2021), with a decrease of 20 offences. The volumes remain slightly below those reported in previous years. Burglary offences increased by 35% from April 2021 (303) to May 2021 (408) - this was around the time that the government’s lockdown restrictions eased significantly, and people were able to leave their homes more. However, Burglary offences reduced by 12% in June 2021, which coincides with restrictions being lifted completely, with people allowed to see each other in their homes.

The numbers have again begun to increase in July 2021, coinciding with people being allowed to go away on holidays again.

Bar chart show street robbery crimes recorded each month:



Robbery Offences have increased by 14% from Q4 (January to March 2021) into Q1 (April to June 2021). Offences in Q1 2021 have increased by 7% compared to Q1 in 2020. This coincides with the easing of restrictions, and more people leaving their homes more often. In April 2021 there were 92 offences recorded, an increase compared to April 2020 when 69 offences were recorded. In June 2021 there were 122 robbery offences recorded, compared to 115 in June 2020. These figures are similar to pre-COVID numbers, with 118 personal robberies reported in June 2019.

Delivery achieved previous quarter:

- ‘Burglary ’21’ review of burglary investigative procedure disseminated throughout force – Area of focus for the last two quarters. Developed through T/DCI Arnold’s working group, it clearly establishes modern expectations for the investigation of house burglary. It was initially discussed during the July Improvement Board for ratification and is now subject to a consultation process which will go back in September.
- Revision of CSI attendance protocol – New processes developed to ensure that all house burglary offences are attended by CSI, or non-attendance is ratified by a CSI. FCR, Resolution Centre and SCD have amended their operating processes to improve identification and compliance.
- Burglary & Robbery Reduction Group – Meeting occurs every other month in line with the anticipated increase in offences and has been well attended. Initial focus has been investigation standards for house burglary.
- OP Tigress (street robbery trigger plan) has been reviewed – the list of actions on this are carried out at scene without prompting, so the revised trigger plan will focus on those actions most critical to investigative success.
- Trial carried out by CID for video calling being used to obtain statements from victims to provide improved service in suitable cases.
- Designing out Crime Strategy - Worked closely with local councils and developers to ensure that new developments have secure design principles, and provided advice to ensure new developments are less at risk of crime

- Op Meteor (Boot Sales) has been implemented throughout the Summer and has provided some successful results. Whilst patrolling a boot sale, officers came across a stall selling an array of weapons and discovered counterfeit money and prohibited items there. The male was arrested, and a house search identified further offences. The operation continues.

Delivery scheduled for current quarter:

- Automatic CSI tagging for street robberies – CSI have questioned the need for automatic tagging for SOCO for street robberies, as most street robberies do not involve physical contact between victim and suspect, and therefore do not have any forensic opportunities. There is currently a discussion ongoing regarding the use of an automatic prompt when a robbery incident is created stating the circumstances that SOCO should be tagged, rather than tagging them automatically.
- Street Robbery procedure – After a review of some street robberies incidents, there appeared to be a lack in some specific enquiries being carried out. Considerations are being made for a prompt being automatically put onto incidents before the attending officers leave for the certain enquiries that are most likely to be forgotten.
- Op Reassure - An operation in partnership with Victim Support Service to provide home crime prevention visits to victims of house burglary who are struggling to recover from the effects of an offence because of feeling unsafe in their homes. This will be trialled in Southend with the intention to see reduced repeat victimisation, improved victim satisfaction and improvements in wider public confidence.
- Burglary Victim Pack – a review is being carried out of the current burglary pack provided to victims to see if it is sufficient and if victims find it useful. Feedback will be requested from victims who have received it, on what else could be offered to them.
- National Best Practice – nationwide force data has been obtained on solved rates for both dwelling burglary and personal robbery. We will be contacting the forces who are performing better to see what their procedures are and look to see if we can implement any of their methods in Essex to improve our own performance.

5.9 **Serious and Organised Crime**

Thematic Lead: Detective Chief Inspector Lee Morton

Delivery Plan progress dashboard:

Delivery Plan Progress	2020/21				2021/22			
	Q1	Q2	Q3	Q4	Q1	Q2	Q3	Q4
Total strands	17	17	24	23	23			
Complete	9	9	13	15	15			
Ongoing/ In progress	8	8	9	8	8			
At risk	0	0	2	0	0			

Strands at risk:

There are no strands identified as being at risk at this time.

Insights:

Essex Police Serious Organised Crime Unit completed a large amount of activity across period April – June 2021 linked to the disruption of Organised Crime groups; the total results are as follows:

- 22 arrests
- 17 warrants executed
- 12 charges
- 6 suspects remanded in custody
- 2Kg of class A drugs seized
- 22Kg of class B drugs seized
- £255,000 cash seized
- £170,000 cash subject to POCA process
- 8 people safeguarded, one of which was a child
- 800 months in prison sentences achieved across various investigations
- Several successful manhunts including out of force suspects from Hampshire (Op Mask) Ramraid offender (Op Itchy) and serious injury to child offender (Op Zoot)

Delivery achieved previous quarter:

- Review of crime prevention strategy for SOC and refresh of the 4P plan for the new strategic tasking period, this has resulted in a move away from simply identifying OCGs and more focus on the full management process from identification through to lifetime offender management.
- Briefing with CPS to share challenges faced by police through CPS protocols for MSHT casework
- Following staff movement, assignment of new Local Responsible Officers (LRO's) for OCGs, and familiarisation with how a MoRiLE score works in order it will help identify the OCG's with a propensity for violence. This has been achieved through the OCCG management board
- Monitoring the intelligence picture to identify when the drugs market is nearing saturation, with this being a strong indicator of potential escalation in violence. This was seen prior to OP Union by the force and indeed post raptor work. This is early stages but is vital in understanding future risks of violence

Delivery scheduled for current quarter:

- Enhanced engagement through Essex Prevent & Protect now that the COVID restrictions have reduced which has allowed more allowing for wider engagement to recommence
- Enhanced officer training in MSHT and Money Laundering, this can be achieved through the return of flex training days
- It is vital that our understanding of the intelligence picture keeps pace with the OCGs adapting to the pandemic's impact
- An upstreaming approach must be maintained when dealing with OCGs, with local force capability imperative to tackling organised crime.

5.10 Delivery/challenges by exception

5.10.1 Covid recovery

In 2021 Essex Police have issued 700 fixed penalty notices relating to Covid-19 legislation up to the end of Q1. 647 of these were issued in Q4 2020/21, 53 in Q1 2021/22. This is in line with the governments roadmap out of lockdown which commenced on 8th March 2021, with restrictions gradually easing throughout Q1.

The government roadmap out of lockdown has presented additional challenges across the force in relation to specific areas of business, not least the reopening of hospitality establishments. It is anticipated that the lifting of restrictions will undoubtedly result in a rise in certain crime types which have benefited from lesser volumes during lockdown, e.g. NTE related offences.

A key message during the economic recovery has been 'Essex is open for business but closed for crime'. The Business Crime Team has continually worked with partners, commercial premises including Chamber of Commerce and Federation of Small Businesses to ensure an informed opening of trade in relation to regulations.

6.0 Implications (Issues)

There is one strand at risk across nine thematic strands (see 6.3)

6.1 Links to Police and Crime Plan Priorities

The thematic strands deliver against the priorities identified within the Police and Crime Plan, namely:

- Breaking the cycle of domestic abuse
- Tackling gangs and serious violence
- Disrupting and preventing organised crime
- Protecting children and vulnerable people from harm

6.2 Demand

Not applicable

6.3 Risks/Mitigation

There is one strand at risk across nine thematic strands and work is ongoing to address and mitigate that risk:

Fraud:

Identifying enforcement opportunities for ancillary orders (e.g. Serious Crime Prevention Orders (SCPO's)) – It is acknowledged that insufficient actions are currently being completed with regards to persons subject of SCPO's. However, this is being considered as part of the Intelligence Review.

Overall, if areas of the strategy are not delivered then there is potential risk of crime figures increasing in relevant areas, and ultimately potential risk to members of the public. This, in turn has a potential reputational risk to the organisation. Each thematic strand has a force lead responsible for their individual areas, enabling appropriate oversight, review, and focus to ensure appropriate action takes place within each thematic area to identify and mitigate these risks, working to improve our response and ultimately prevent crime.

6.4 Equality and/or Human Rights Implications

There are no protected characteristics adversely affected by the strategy. Whilst there are no specific equality and/or human rights implications identified, any actions which take place in relation to the strategy will take account of such matters, ensuring compliance with relevant legislation and the force Diversity, Equality and Inclusion Strategy.

6.5 Health and Safety Implications

No Health and Safety Risks identified.

7.0 Consultation/Engagement

Thematic leads have all contributed to this report.

Domestic Abuse – Chief Superintendent Tom Simons

Gangs and Knife Crime – Detective Superintendent Rob Kirby

Night-Time Economy – Superintendent Stuart Weaver

Child Abuse and Exploitation – Detective Chief Superintendent Andy Packer

Extremism and Radicalisation – Superintendent Richard Melton

Hate Crime – Superintendent Richard Melton

Digital Crime and Fraud – Detective Chief Inspector Stuart Truss

Dwelling Burglary and Street Robbery – Chief Superintendent Simon Anslow

Serious and Organised Crime – Detective Chief Inspector Lee Morton

8.0 Actions for Improvement

There are no outstanding HMICFRS improvement plans or Areas for Improvement (AFIs) relating to the Crime Prevention Strategy.

9.0 **Future Work/Development and Expected Outcome**

See section 5 for overview of delivery scheduled for current quarter in relation to each thematic area.

As reported in Q4 report, Essex Police are committed to develop a stronger new Crime Prevention Strategy (2021-25).

The new Crime Prevention Strategy is based upon a whole system approach, with a strong focus on partnership working, using intelligence and evidence to predict the future challenges we face over the next five years, and prepares us for the anticipated increase in volume and complexity of crime within a significant political, economic and community recovery period post-Covid.

The objectives for the 14 new thematic strands have been finalised, each of which have their own force lead. Each thematic strand sits within one of four categories:

Vulnerabilities:

- Places
- Burglary/robbery
- Prevent
- Hate crime

Serious violence:

- Knife crime
- Rape
- Night-time economy

Organised crime:

- County line/exploitation
- Serious organised crime
- Cybercrime and fraud

Complex needs:

- Child abuse/child sexual exploitation
- Domestic abuse
- Drugs and alcohol
- Mental health

The 2021-25 Crime Prevention Strategy is now complete and has been signed off by Chief Officers. It currently awaits sign off by the OPFCC prior to its launch at the end of September/beginning of October 2021 (date to be confirmed).