

Police and Crime Plan 2016-2021

Monthly Performance Update

July 2021

National and MSG positions are to 31 May 2021 (Essex Police data are to 31 July 2021).



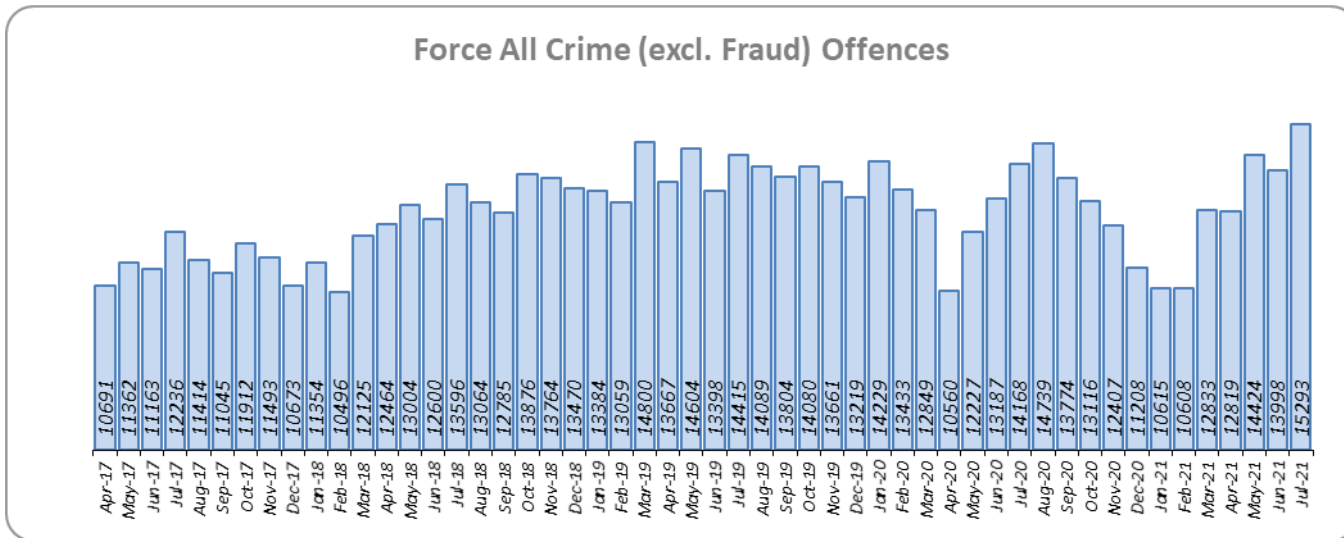
Version 1.2
Produced August 2021
Performance Analysis Unit, Essex Police
Sensitivity: Official

Executive Summary

- **Four of the seven PFCC Priorities** for Essex Police have been given a recommended grade of '**Good**'. Recommended grades have been determined with reference to comparisons with Essex Police's Most Similar Group (MSG) of forces, Key Performance Indicators (KPIs), and professional judgement.
- **Three of the seven PFCC priorities** – 3 (Breaking the cycle of Domestic Abuse), 4 (Tackling Gangs and Serious Violence) and 6 (Protecting children and vulnerable people) – have been given a recommended grade of '**Requires Improvement**'.
- **All Crime fell by 2.7% for the 12 months to July 2021** compared to the 12 months to July 2020; this equates to 4,350 fewer offences. This decrease has been primarily influenced by the Government's restrictions on gathering and movement in relation to COVID-19.
*Each change in the rules relating to social distancing has affected the number of All Crime offences reported to Essex Police.**
- There was a 6.1% increase in All Crime in July 2021 compared to July 2019 (15,293 July 2021 v. 14,415 July 2019). The Force recorded 4,733 more offences in July 2021 than in April 2020 (10,560 offences), when the Government implemented the first lockdown; this equates to 44.8% more offences.
- The Force recorded **578 more Violence with Injury (VWI) offences (66.1% increase) in July 2021 compared to April 2020** (1,453 v. 875 offences). The number of **VWI offences recorded in July 2021 was higher than the number recorded before COVID restrictions were introduced**; compared with July 2019 there was a 14.7% increase (186 more crimes).
- There were **38.9% fewer Anti-Social Behaviour (ASB) in July 2021 (3,036 incidents)** compared to July 2020 (4,970 incidents). Since March 2020, the number of ASB incidents reported has generally been higher when tighter restrictions have been implemented by the Government, and lower when restrictions have been eased. **The average daily number of ASB incidents was 27.4% lower in July 2021 (98 incidents) compared to June 2021 (135 incidents). ASB incidents in July 2021 were 26.6% lower compared to pre-COVID levels**; there were 1,100 fewer incidents in July 2021 compared to July 2019 (4,136 incidents). **July 2021 experienced the lowest number of ASB incidents recorded per month since February 2020** (2,865 incidents).
- Confidence (from the independent survey commissioned by Essex Police) is at 79.8% (results to the 12 months to June 2021). **Compared to year ending June 2020, confidence in the local police increased by 10.1% points.**
- In response to COVID-19, Essex Police have been following a 4E approach: engaging, explaining, encouraging, and only enforcing as a last resort. **In July 2021, Essex Police recorded 19 Fixed Penalty Notices (FPN / 4E); this represents 70.0% of all engagements** (18 out of the 19 tickets were for a single Unlicensed Music Event). In total, 1,499 FPNs (4E) have been issued in the period April 2020 to July 2021. The July 2021 total includes enforcement marked as having been sent to ACRO Criminal Records Office.
- There was an increase of 26.4% (29 more) Modern Slavery referrals in the 12 months to July 2021 compared to the same period in 2019-20. Essex Police have worked towards increasing the number of referrals to achieve greater range and engagement with hard to access groups, thereby creating more opportunities to help vulnerable people. This has resulted in the number of referrals being higher in the 12 months to July 2021 compared to the same period in 2019-20 for the first time since these data have been included in this report (June 2020).

* Please see table showing the affect of social distancing measures on pages 13- 16.

Police Priority Indicators	12 months to July 2019	12 months to July 2020	12 months to July 2021	Number Difference 2020/21	% Difference 2020/21	Essex per 1,000 pop.	MSG Ave per 1,000 pop.	# diff.	Essex MSG Position
Number of all crime offences	164,492	158,659	154,309	-4,350	-2.7	83.2	71.4	11.8	8



Essex experienced a 2.7% decrease in All Crime (4,350 fewer offences) for the 12 months to July 2021 compared to the 12 months to July 2020. This decrease in crime has been primarily influenced by the Government’s restrictions on gathering and movement in relation to COVID-19. Essex is eighth in its Most Similar Group of forces (MSG) for crime per 1,000 population.

Due to the Government’s easing of restrictions on 19 July 2021, Essex Police recorded a daily average of 493 crimes in July 2021, compared with an average of 467 crimes in June 2021. This equates to an increase of 5.7%.

15,293 offences were recorded in July 2021. This equates to an increase of 7.9% (1,125 more offences) compared to July 2020 (14,168 offences), when stricter Government restrictions were in place. There was a 6.1% increase in July 2021 compared to July 2019 (14,415 offences).

Essex Police has been shortlisted in the Police Service of the Year category in the Improvement and Efficiency Social Enterprise (iESE) Public Sector Transformation Awards. These awards celebrate the most innovative practice in transforming local public services.

Priority 1 - More local, visible and accessible policing

Grade: **Good**

Police Priority Indicators	12 months to June 2019	12 months to June 2020	12 months to June 2021	Number Difference 2020/21	% Difference 2020/21
Percentage of people who have confidence in policing in Essex (internal survey)	66.7	69.7	79.8	10.1	-
<i>Confidence Interval</i>	1.1	1.0	0.9		

Police Priority Indicators	12 months to March 2018	12 months to March 2019	12 months to March 2020	Number Difference 2020/21	% Difference 2020/21	Essex	MSG Ave	# diff.	Essex MSG Position
Confidence in the local police (Crime Survey of England and Wales)*	52.4	46.9	48.6	1.6	-	48.6	55.1	-6.5	8
<i>Confidence Interval</i>	4.5	4.5	3.9			3.9	1.6		

Police Priority Indicators	12 months to July 2019	12 months to July 2020	12 months to July 2021	Number Difference 2020/21	% Difference 2020/21	Essex	MSG Ave	# diff.	Essex MSG Position
Harm (Crime Severity) Score** v. Most Similar Group of Forces (MSG) - All Crime	13.1	13.1	12.7	-	-	12.7	10.9	1.8	7
Emergency response attendance within 15 mins (urban) or 20 mins (rural) (GOS %)***	71.9	76.9	80.9	4.0	-				

Confidence (from the independent survey commissioned by Essex Police) is at 79.8% (results to the 12 months to June 2021). Compared to year ending June 2020, confidence in the local police has significantly increased (an improvement of 10.1% points).

The All Crime Harm (Crime Severity) Score** (12.7) places Essex seventh in its MSG.

Essex Police performance in relation to emergency response attendance within 15 minutes (urban) or 20 minutes (rural) has improved by 4.0 percentage points to 80.9% in the 12 months to July 2021 compared to the 12 months to July 2020. This is above the 80% target.

Due to the fact that the percentage of people who have confidence in policing in Essex has improved and the emergency response attendance is above the 80% target, a grade of Good is recommended.

Please note:

* Crime Survey of England and Wales data are no longer available at Force level. Data are for the 12 months to March 2020.

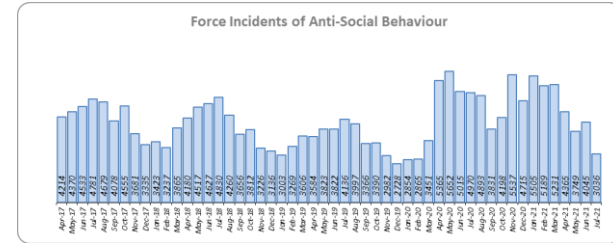
** Crime Severity Scores (as calculated by the Office for National Statistics) measure the 'relative harm' of crimes by taking into account both their volume and their severity. Data are for the 12 months to May in all three years.

*** Grade of Service.

Priority 2 - Crack down on anti-social behaviour

Grade: **Good**

Police Priority Indicators	12 months to July 2019	12 months to July 2020	12 months to July 2021	Number Difference 2020/21	% Difference 2020/21
Number of anti-social behaviour incidents	43,585	46,819	54,292	7,473	16.0



Police Priority Indicators	12 months to March 2018	12 months to March 2019	12 months to March 2020	Number Difference 2020/21	% Difference 2020/21	Essex	MSG Ave	# diff.	Essex MSG Position
ASB Perception:- Perception that ASB is a problem (CSEW)*	11.0	3.3	4.3	1.0	-	4.3	4.8	-0.5	4
<i>Confidence Interval</i>	5.4	2.5	2.9			2.9	1.4		

Police Priority Indicators	12 months to June 2019	12 months to June 2020	12 months to June 2021	% pt. Difference 2020/21	% Difference 2020/21
Percentage of people who have confidence Essex Police and the organisations they work with are dealing with ASB (internal survey)	64.5	69.4	69.8	0.4	-
<i>Confidence Interval</i>	1.1	1.1	1.1		

Essex experienced a 16.0% increase (7,473 more) in Anti-Social Behaviour (ASB) incidents for the 12 months to July 2021 compared to the 12 months to July 2020. This increase was due to the COVID-19 restriction period, during which many additional reports were received that related to activities that were not previously considered to be ASB; examples include social gatherings and shops and businesses continuing to trade. Since March 2020 the number of ASB incidents reported has generally been higher when tighter restrictions were implemented by the Government, and lower when restrictions were eased.

There was a decrease of -38.9% ASB reports in July 2021 compared to July 2020 (1,934 fewer incidents). The average daily number of ASB incidents decreased by 27.4% in July 2021 (98 incidents) compared to June 2021 (135 incidents). July 2021 experienced the lowest number of ASB incidents recorded per month since February 2020 (2,865 incidents).

The number of ASB incidents for the 12 months to July 2021 compared to the 12 months to July 2019 increased by 24.6% (10,707 more incidents).

The results of Essex's independent survey in relation to how well residents perceive Essex Police and partner organisations to be dealing with ASB showed a slight improvement: 0.4% points.

Due to the increase in public perception from the Essex independent survey, and the fact that the lowest monthly number of ASB incidents since pre-COVID were recorded in July 2021 a grade of Good is recommended.

Please note:

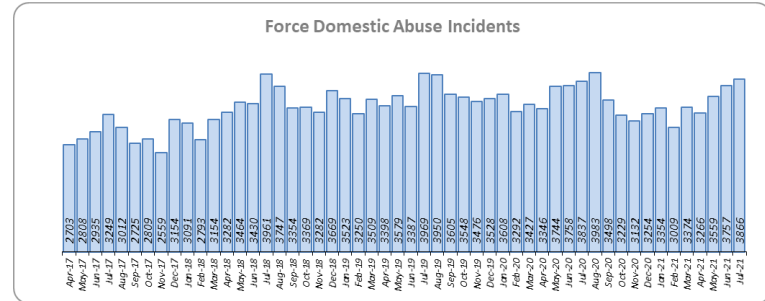
* Crime Survey of England and Wales data are no longer available at Force level. Data are for the 12 months to March 2020.

Priority 3 - Breaking the cycle of domestic abuse

Grade: **Requires Improvement**

Police Priority Indicators	12 months to July 2019	12 months to July 2020	12 months to July 2021	Number Difference 2020/21	% Difference 2020/21
Number of incidents of domestic abuse	42,036	43,119	41,281	-1,838	-4.3
Number of repeat incidents of domestic abuse	19,609	20,250	20,214	-36	-0.2
Number of domestic abuse arrests	11,916	13,246	14,351	1,105	8.3
Number of Domestic Violence Protection Notices (DVPNs) and Protection Orders (DVPOs)	171	219	222	3	1.4

Police Priority Indicators	12 months to July 2019	12 months to July 2020	12 months to July 2021	Number Difference 2020/21	% Difference 2020/21
Total domestic abuse offences solved	3,212	3,403	3,094	-309	-9.1
High Risk domestic abuse offences solved	805	741	714	-27	-3.6
Medium Risk domestic abuse offences solved	1,030	1,009	666	-343	-34.0
Standard Risk domestic abuse offences solved	1,175	1,472	1,554	82	5.6



Essex experienced a 4.3% decrease (1,838 fewer) in Domestic Abuse incidents and a 0.2% decrease (36 fewer) in repeat incidents of Domestic Abuse for the 12 months to July 2021 compared to the 12 months to July 2020. There was an 8.3% increase (1,105 more) in Domestic Abuse arrests and a 1.4% increase (3 more) in the number of Domestic Violence Protection Notices (DVPN) and Protection Orders (DVPO) issued in the 12 months to July 2021 compared to the 12 months to July 2020.

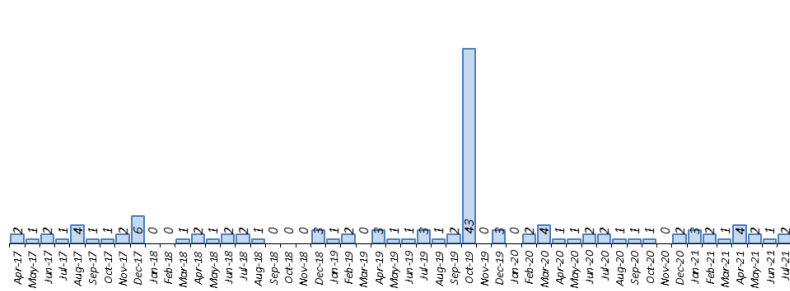
Domestic Abuse incidents in July 2021 were lower than at pre-COVID levels, with a 2.6% decrease (103 fewer incidents) compared to July 2019.

There was a 9.1% decrease (309 fewer) in the number of solved Domestic Abuse outcomes in the 12 months to July 2021 compared to the 12 months to July 2020 and a 3.7% decrease (118 fewer) compared to the 12 months to July 2019.

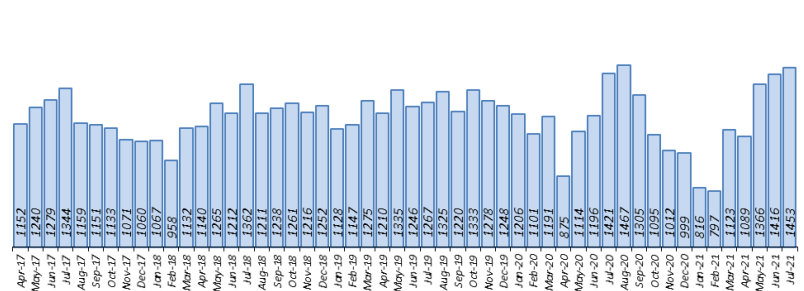
Due to the fact that the number of DA solved offences has decreased for the third month in a row, a grade of Requires Improvement is recommended.

Police Priority Indicators	12 months to July 2019	12 months to July 2020	12 months to July 2021	Number Difference 2020/21	% Difference 2020/21	Essex per 1,000 pop.	MSG Ave per 1,000 pop.	# diff.	Essex MSG Position
Number of homicides	16	61	21	-40	-65.6	0.012	0.008	0.004	7
Number of violence with injury offences (new definition from Nov 2017)	14,941	14,518	13,915	-603	-4.2	7.431	7.693	-0.262	5

Force Homicide Offences



Force Violence with Injury Offences



40 fewer Homicides (to 21 offences) were recorded for the 12 months to July 2021 compared to the 12 months to July 2020. The 12 months to July 2020 includes the tragic incident where 39 Vietnamese nationals were discovered in a lorry trailer in Grays in October 2019. Essex is seventh in its Most Similar Group (MSG) of forces for offences per 1,000 population, and is slightly higher than the MSG average.

There were two Homicides in both July 2021 and July 2020, and three offences in July 2019.

There was a 4.2% decrease (603 fewer offences) in Violence with Injury offences for the 12 months to July 2021 compared to the 12 months to July 2020. The average daily number of Violence with Injury offences was 47 for both the months of July 2021 and June 2021. 578 more offences (66.1%) were recorded in July 2021 (1,453 offences) compared to April 2020 (875 offences) when the Government first implemented national restrictions.

The number of Violence with Injury offences decreased by 6.9% (1,026 fewer offences) in the 12 months to July 2021 compared to the 12 months to July 2019.

Essex is fifth in its MSG for Violence with Injury offences per 1,000 population, and is better than the MSG average. There was a decrease in domestic abuse-related Violence with Injury (5.5% decrease, 314 fewer offences); 38.8% of Violence with Injury is domestic abuse-related.

Priority 4 – Tackling gangs and serious violence

Grade: **Requires Improvement**

Police Priority Indicators	12 months to July 2019	12 months to July 2020	12 months to July 2021	Number Difference 2020/21	% Difference 2020/21	Essex	MSG Ave	# diff.	Essex MSG Position
Harm (Crime Severity) Score* v. Most Similar Group of Forces (MSG) for Violence with Injury, Rape, Other Sexual Offences and Robbery of Personal Property	7.5	7.7	8.0	-	-	8.0	6.8	1.2	7
Number of Violence with Injury, Rape, Other Sexual Offences and Robbery of Personal Property solved	3,086	2,959	2,741	-218	-7.4				
Stop and search for weapons	1,872	3,737	1,317	-2,420	-64.8				
Knife-enabled crime**	826	1,400	1,521	121	8.6				

The combined harm (Crime Severity) score* (8.0) for Violence with Injury, Rape, Other Sexual Offences and Robbery of Personal Property places Essex seventh in its Most Similar Group of Forces (MSG).

There was a 7.4% decrease (218 fewer) in the number of solved high harm offences (Violence with Injury, Rape, Other Sexual Offences and Robbery of Personal Property combined) in the 12 months to July 2021 compared to the 12 months to July 2020. Please see page 20 for the numbers of solved for each category.

There was a 64.8% decrease (2,420 fewer) in the number of stop and search for weapons in the 12 months to July 2021 compared to the 12 months to July 2020.

There was an 8.6% increase (121 more) in the number of Knife-enabled crime offences in the 12 months to July 2021** compared to the 12 months to July 2020.

The number of solved high harm offences decreased by 11.2% (345 fewer) and the number of stop and search for weapons decreased by 29.6% (555 fewer) in the 12 months to July 2021 compared to the 12 months to July 2019.

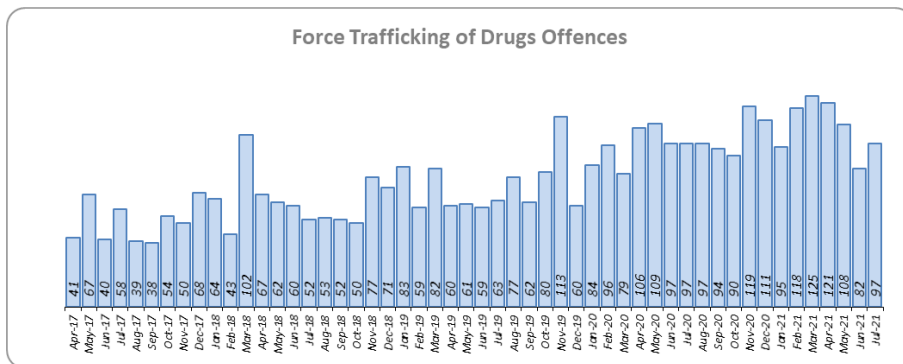
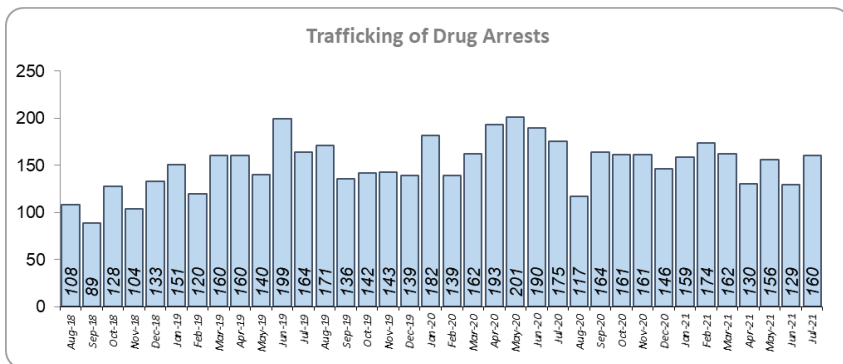
Due to the fact that Essex is higher than the MSG average in the number of homicides, and that the number of solved high harm offences has reduced, a grade of Requires Improvement is recommended.

Please note:

* Crime Severity Scores (as calculated by the Office for National Statistics) measure the 'relative harm' of crimes by taking into account both their volume and their severity. Data are for the 12 months to May in all three years.

** The number of knife crime offences is an indicator of how effective Essex Police is at identifying knife-enabled offences, and is not necessarily reflective of the number of these offences that have been committed in the county. This is because the identification of these offences is reliant on the appropriate indicator being manually added to the crime record. A manual review of knife flags was conducted and missing flags were added retrospectively. Additionally a new data quality process was introduced in June 2020. Whilst this has enabled us to better understand knife crime in Essex, the process has consequently inflated the figures. As such, no inferences can be drawn as to the current trend.

Police Priority Indicators	12 months to July 2019	12 months to July 2020	12 months to July 2021	Number Difference 2020/21	% Difference 2020/21
Number of Organised Criminal Group disruptions*	47	144	278	134	93.1
Trafficking of drugs arrests	1,656	1,972	1,818	-154	-7.8



Essex experienced a 93.1% increase in Organised Crime Group (OCG) disruptions (134 more) for the 12 months to June 2021 compared to the 12 months to June 2020. In January 2019 there was a change in the way in which the number of OCG disruptions were counted; this follows National Crime Agency (NCA) and Eastern Region Special Operations Unit (ERSOU) guidance to ensure that all forces record disruptions in the same way.

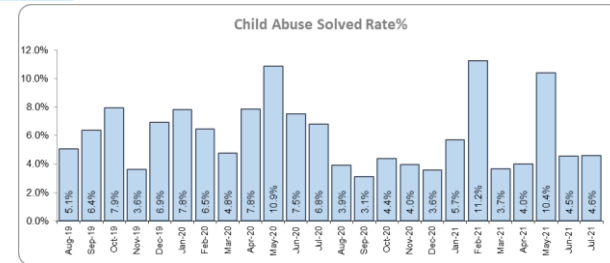
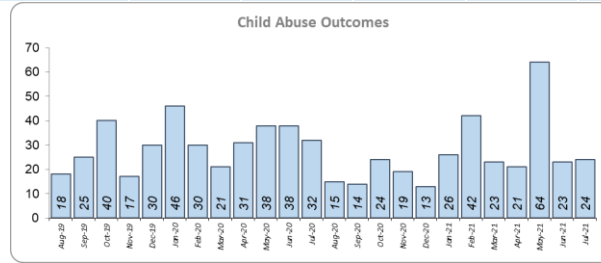
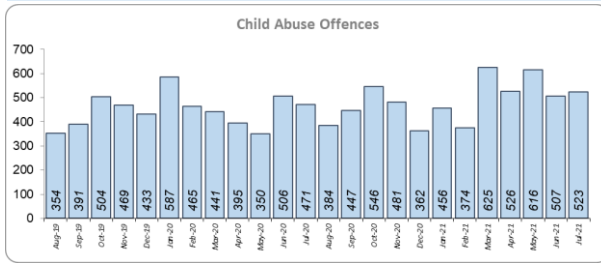
Trafficking of drug arrests, which are primarily driven by police proactivity, decreased by 7.8% (154 fewer) for the 12 months to July 2021 compared to the 12 months to July 2020. In the same period, 19.1% more trafficking of drugs offences have been recorded (205 more offences to 1,276).

The number of trafficking of drug arrests increased by 9.8% (162 more) in the 12 months to July 2021 compared to the 12 months to July 2019.

Due to the increase in OCG disruptions a grade of Good is recommended.

* OCG disruptions are now reported quarterly. Data are to June 2021. Due to the change in recording in January 2019 it is not possible to compare the 12 months to June 2019 to the 12 months to June 2021.

Police Priority Indicators	12 months to July 2019	12 months to July 2020	12 months to July 2021	Number Difference 2020/21	% Difference 2020/21
Number of child abuse outcomes	229	384	316	-68	-17.7
Number of child abuse offences	4,529	5,391	5,904	513	9.5
Child abuse solved rate	5.1	7.1	5.4	-1.8	-
Child Sexual Abuse/Exploitation investigations	2,110	1,993	2,242	249	12.5
Modern Slavery referrals made to the National Referral Model (NRM)*	45	110	139	29	26.4



Although there was a 12.5% increase (249 more) in the number of Child Sexual Abuse/Exploitation investigations in the 12 months to July 2021 compared to the 12 months to July 2020, there was a 17.7% decrease (68 fewer) in the number of solved Child Abuse Outcomes.

9.5% more Child Abuse offences (an increase of 513) were recorded in the 12 months to July 2021 compared to the 12 months to July 2020. This increase in offences can be partly attributed to a rise in referrals from schools in the latter part of 2020. There was a 1.8% point decrease in the solved rate (from 7.1% to 5.4%).

139 Modern Slavery referrals were made in the 12 months to July 2021 compared with 110 in the 12 months to July 2020 (29 more).

The number of child abuse outcomes increased by 38.0% (87 more outcomes) and the number of child abuse offences increased by 30.4% (1,375 more offences) in the 12 months to July 2021 compared to the 12 months to July 2019.

6.3% more Child Sexual Abuse/Exploitation investigations (an increase of 132) were recorded in the 12 months to July 2021 compared to the 12 months to July 2019.

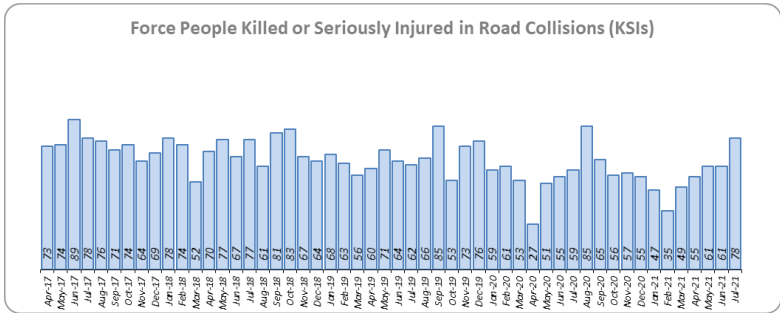
Due to the decrease in the number of child abuse outcomes and the increase of child abuse offences, a grade of Requires Improvement is recommended.

* Due to a change in recording of Modern Slavery referrals in April 2019 it is not possible to compare the 12 months to July 2019 to the 12 months to July 2021.

Priority 7 - Improve safety on our roads

Grade: **Good**

Police Priority Indicators	12 months to July 2019	12 months to July 2020	12 months to July 2021	Number Difference 2020/21	% Difference 2020/21	Essex (per 100 million km) Data to June 2020	MSG Ave (per 100 million km) Data to June 2020	# diff.	Essex MSG Position
All people killed or seriously injured (KSI) in road collisions	878	735	717	-18	-2.4	0.795	0.652	0.144	6
Number of driving related mobile phone crime on Essex roads*	2,483	722	482	-240	-33.2				
Number of driving under the influence of drink and/or drugs on Essex roads	3,400	4,233	3,101	-1,132	-26.7				
<i>Number of driving under the influence of drink on Essex roads</i>	1,418	1,430	1,296	-134	-9.4				
<i>Number of driving under the influence of drugs on Essex roads</i>	1,596	2,345	1,460	-885	-37.7				
<i>Number of Failure to Provide samples</i>	386	458	345	-113	-24.7				



Rolling 12 months	12 months to Jul 2019	12 months to Jul 2020	12 months to Jul 2021	Number Difference 2020/21	% Difference 2020/21
KSI - All	878	735	717	-18	-2.4%
KSI - Fatalities	42	48	35	-13	-27.1%
KSI - Serious injuries	836	687	682	-5	-0.7%
Number of Collisions	823	690	662	-28	-4.1%

There was a 2.4% decrease (18 fewer) in the number of those Killed or Seriously Injured (KSI) in Essex for the 12 months to July 2021 compared to the 12 months to July 2020. The number of KSIs also decreased by 18.3% (161 fewer offences) in the 12 months to July 2021 compared to the 12 months to July 2019. Please note that most KSIs do not necessarily result in criminal offences (such as death or serious injury caused by dangerous driving) being recorded. Essex is sixth in its Most Similar Group (MSG) of forces for casualties per 100 million vehicle kilometres (results to June 2020) and slightly worse than the MSG average. However, due to the fact that more recent national figures have not been released, the current position cannot be determined (the date of the next national release has not yet been confirmed).

There was a 33.2% decrease (240 fewer offences) in the number of driving related mobile phone offences recorded for the 12 months to July 2021 compared to the 12 months to July 2020.* There was also a 26.7% decrease (1,132 fewer offences) in drink/drug driving for the 12 months to July 2021 compared to the 12 months to July 2020; of these offences, there was an 9.4% decrease (134 fewer offences) in *drink* driving and a 37.7% decrease (885 fewer offences) in *drug* driving. All of these offence types are primarily driven by police proactivity in relation to road safety.

Due to the decrease in KSIs and the number of drink/drug driving offences in the past 12 months, a grade of Good is recommended.

* The year on year data for driving offences related to mobile phones are not comparable due to a legal appeal (which occurred in October 2019). The current phone use legislation is awaiting clarification in the courts, which has been delayed due to the impact of COVID-19. Since the appeal, fewer offences have been prosecuted.

Monthly Performance Overview: Exceptions

Exceptions Overview

Violence without Injury, Stalking and Harassment, Rape, Racial/Religiously Aggravated Offences, Hate Crime HO Definition, Domestic Abuse and Public Order experienced statistically significant increases for the month of July 2021. The solved rate for Stalking and Harassment experienced a statistically significant decrease.

Violence without Injury Offences – Increase

0.01% increase (4 more crimes) for the 12 months to July 2021 compared to the 12 months to July 2020. There were statistically exceptional increases in five Districts in July 2021.

Stalking and Harassment - Offences – Increase

18.0% increase (4,102 more crimes) for the 12 months to July 2021 compared to the 12 months to July 2020. There were statistically exceptional increases in six Districts in July 2021.

Stalking and Harassment - Solved Rate - Decrease

2.2% increase (40 more solved offences) for the 12 months to July 2021 compared to the 12 months to July 2020. The Force saw a statistically exceptional decrease in July 2021.

Rape Offences – Increase

17.5% increase (344 more crimes) for the 12 months to July 2021 compared to the 12 months to July 2020. There were statistically exceptional increases in three Districts in July 2021.

Racial/Religiously Aggravated Offences – Increase

14.7% increase (246 more crimes) for the 12 months to July 2021 compared to the 12 months to July 2020. There were statistically exceptional increases in three Districts in July 2021.

Hate Crime HO Definition – Increase

26.4% increase (836 more crimes) for the 12 months to July 2021 compared to the 12 months to July 2020. The Force saw a statistically exceptional increase in July 2021.

Domestic Abuse Offences – Increase

3.2% decrease (969 fewer crimes) for the 12 months to July 2021 compared to the 12 months to July 2020. There were statistically exceptional increases in three Districts in July 2021.

Public Order Offences – Increase

8.9% increase (1,377 more crimes) for the 12 months to July 2021 compared to the 12 months to July 2020. There were statistically exceptional increases in ten Districts in July 2021.

Monthly Performance Overview: Of Note

COVID-19: Restrictions of movement and social distancing

Since 13 March 2020, the Government implemented a series of alert levels and steps regarding the level of social distancing allowed in relation to COVID-19. Each change has affected the number of All Crime offences recorded.

On 14 October 2020 the Government introduced three levels of restrictions according to different levels of infections around the country. Tier 1 – Medium, Tier 2 – High and Tier 3 – Very High.

Date Period	Level	Step	Restrictions	Number of days	Daily Average			
01/08/2020 - 14/08/2020	Level 3	Step 3	<ul style="list-style-type: none"> Sports facilities and venues, including indoor gyms, fitness and dance studios, indoor swimming pools and water parks reopen 	14	484			
15/08/2020 - 31/08/2020	Level 3	Step 3	<ul style="list-style-type: none"> Indoor theatre, music and performance venues to reopen with socially distanced audiences Wedding receptions in the form of a sit-down meals for up to 30 people will be permitted Piloting of a small number of sporting events to the safe return of spectators will resume Casinos, bowling alleys, skating rinks and soft play centres reopen Close contact beauty services such as facials, eyebrow threading, eyelash treatments, make-up application and microblading will resume Pilots will take place at conference venues ahead of the expected resumption of business events (from 1st October at the earliest) 	17	463			
01/09/2020 - 13/09/2020	Level 3	Step 3	<ul style="list-style-type: none"> Week beginning 1st September - schools, nurseries and colleges reopen for all children and young people on a full-time basis 	13	440			
14/09/2020 - 22/09/2020	Level 3 Level 4*	Step 3	<ul style="list-style-type: none"> "Rule of Six" introduced. Apart from a set of limited exemptions, including work and education, any social gatherings of more than six people are not permitted Universities reopen 	9	483			
23/09/2020 - 23/09/2020	Level 4		<ul style="list-style-type: none"> Face coverings to be worn by taxi drivers and passengers 	1	470			
24/09/2020 - 27/09/2020	Level 4		<ul style="list-style-type: none"> All hospitality venues must close at 22:00 All retail staff and customers in indoor hospitality venues to wear masks, except when seated at a table to eat or drink All pubs, bar and restaurants restricted to table service only 	4	451			
28/09/2020 - 13/10/2020	Level 4		<ul style="list-style-type: none"> Only 15 people able to attend weddings and civil partnerships, in groups of six Indoor adult sports only permitted in groups of less than six 	16	424			
Date Period	Alert Level - Essex County Council			Alert Level - Thurrock and Southend			Number of days	Daily Average
14/10/2020 - 16/10/2020	Tier 1 - Medium			Tier 1 - Medium			3	437
17/10/2020 - 04/11/2020	Tier 2 - High			Tier 1 - Medium			19	417

* The alert level was increased to Level 4 on 21st September 2020 but no restrictions were changed on this date.

Monthly Performance Overview: Of Note (continued)

COVID-19: Restrictions of movement and social distancing

On 5 November 2020 the Government implemented a period of increased restrictions which ended on 2nd December 2020 when the country returned to the Tier system.

On 20 December the Government introduced Tier 4 – Stay at Home and on 5th January 2021 a third period of increased restrictions was implemented.

In March 2021 the Government announced its roadmap out of restrictions, starting with Step 1 on 8th March.

Date Period	Level	Step	Restrictions	Number of days	Daily Average
05/11/2020 - 02/12/2020	Period of increased restrictions		<ul style="list-style-type: none"> • Main Restrictions <ul style="list-style-type: none"> • Pubs and restaurants closed but takeaways permitted • Non-essential shops, leisure and entertainment venues closed • No households mixing indoors, or in private gardens, unless in your support bubble • Stay home - only leave for specific reasons including education and work • Schools, universities and colleges remain open • Outdoor recreation encouraged, you can meet one person outside your household 	28	406
Date Period	Alert Level - Essex County Council		Alert Level - Thurrock and Southend	Number of days	Daily Average
03/12/2020 - 15/12/2020	Tier 2 - High		Tier 2 - High	13	381
16/12/2020 - 19/12/2020	Tier 3 - Very High*		Tier 3 - Very High	4	375
20/12/2020 - 04/01/2021	Tier 4 - Stay at Home*		Tier 4 - Stay at Home	16	318
05/01/2021 - 07/03/2021	Tier 4 - Stay at Home with increased restrictions		Tier 4 - Stay at Home with increased restrictions	63	361
Date Period	Level	Step	Restrictions	Number of days	Daily Average
08/03/2021 - 28/03/2021	Easing of restrictions - Step 1		<ul style="list-style-type: none"> • Schools and colleges are open for all students. • University students can return for practical courses. • Recreation or exercise outdoors with household or one other person. • 30 people allowed to attend funerals. • 6 people allowed to attend weddings and wakes. 	20	413

* The majority of Essex is in this Tier

Monthly Performance Overview: Of Note (continued)

COVID-19: Restrictions of movement and social distancing

The Government continued on its roadmap out of restrictions with Step 1a on 29th March 2021, Step 2 on 12th April 2021 and Step 3 on 17th May 2021.

Date Period	Level	Restrictions	Number of days	Daily Average
29/03/2021 - 11/04/2021	Easing of restrictions - Step 1a	<ul style="list-style-type: none"> • Rule of 6 or two households outdoors. No household mixing indoors. • Outdoor Sport and leisure facilities reopen. • Organised outdoor sport allowed (children and adults). • Minimise travel. No holidays. • Outdoor parent and child groups (up to 15 parents). 	14	382
12/04/2021 - 16/05/2021	Easing of restrictions - Step 2	<ul style="list-style-type: none"> • Advice remains to keep journeys to a minimum and work from home where possible. <ul style="list-style-type: none"> • Pubs and restaurants are allowed to serve drinks and meals outdoors. • All shops can open. • Hairdressers, nail salons and other personal care businesses can reopen. • Indoor gyms and sports facilities reopen for individual exercise or for exercise with your household or bubble. • Indoor children's activities. • Members of the same household can take a holiday in self-contained accommodation. • 30 people allowed to attend funerals. • 15 people allowed to attend weddings and wakes. 	35	449
17/05/2021 - 20/06/2021	Easing of restrictions - Step 3	<ul style="list-style-type: none"> • Social distancing will remain in place in social care, medical, retail, hospitality and business settings. People will still need to wear face coverings on transport and in shops, unless they are exempt <ul style="list-style-type: none"> • People can meet in groups of up to 30 outdoors • Six people, or two households, can meet indoors with overnight stays allowed • Pubs, restaurants bars and cafes allowed to serve customers indoors • Museums, theatres and cinemas can open • Hotels, hostels and B&Bs can reopen • Adult indoor group exercise classes can restart • People urged to be cautious about hugging close friends and family • Face coverings no longer recommended in secondary schools for pupils • All remaining university students eligible to return to in-person teaching 	35	471

Monthly Performance Overview: Of Note (continued)

COVID-19: Restrictions of movement and social distancing

The Government continued on its roadmap out of restrictions with Step 3a on 21st June 2021.

On 19th July 2021 all legal restrictions were lifted but the Government urged caution due to rising case numbers.

Date Period	Level	Restrictions	Number of days	Daily Average
21/06/2021 - 18/07/2021	Easing of restrictions - Step 3a	<ul style="list-style-type: none"> • Social distancing will remain in place in social care, medical, retail, hospitality and business settings. People will still need to wear face coverings on transport and in shops, unless they are exempt <ul style="list-style-type: none"> • The number of guests at a wedding is no longer limited to 30, (although risk assessments must be carried out to ensure social distancing can take place). Similar rules apply to wakes • Care home residents will not necessarily have to self-isolate after leaving their care homes and they will be able to nominate an "essential care-giver" who can visit even if they are self-isolating • Children can go on overnight trips in groups of 30 • Large events pilots will continue, including sport, art and music events 	28	488
19/07/2021 - 31/07/2021	End of legal restrictions	<ul style="list-style-type: none"> • Social distancing <ul style="list-style-type: none"> • No limit on meeting people but try to meet others outside where possible • 1m-plus guidance removed (except in some places like hospitals and passport control when entering) • Face coverings no longer required by law, although the government still "expects and recommends" them in crowded and enclosed spaces • Some shops and transport operators will still require masks • Events and gatherings <ul style="list-style-type: none"> • Nightclubs can reopen • Business and large events encouraged to use Covid-certification to limit the spread of the virus • Pubs and restaurants no longer table-service only • No limits on guests at weddings and funerals • No limits on people attending concerts, theatres, cinemas or sports events • No restrictions on communal worship • Other changes <ul style="list-style-type: none"> • People currently working from home should return to the workplace gradually • Limits on visitors to care homes will be removed 	13	472

Monthly Performance Overview: Of Note (continued)

19th to 25th July - Anti-Social Behaviour Awareness Week

Anti-Social Behaviour is not just nuisance behaviour: it can severely impact on victims and make their lives a misery. Essex Police work closely with councils and other organisations across Essex to support victims and deal with offenders. This was the UK's first Anti-Social Behaviour Awareness Week; it was organised by community safety specialists Resolve, aiming to highlight how police, councils, housing providers, fire services and community groups keep communities safe. Essex Police are focussed on dealing with ASB, supporting victims and dealing with those responsible.

Essex Police welcomes 58 new officers

New recruit numbers passed 451 since the first lockdown in March 2020 as 58 more officers joined Essex Police. More than a third of the new officers are women.

As the country endured the biggest disruption to life since the Second World War, Essex Police have continued to train the next generation of police officers who are now catching criminals and keeping people safe on the streets of Essex. Throughout their training, the students took part in a series of charity challenges that have raised more than £3,000 for causes including Havens Hospices, the Helen Rollason Cancer Charity, Sepsis UK, the Isobel Parmenter Memorial Fund, Little Edi Foundation and our own Essex Retired Police Dog Fund.

2016-2021 Police and Crime Plan Performance Indicators

Table 1

Police and Crime Plan Priorities	Police Priority Indicators	12 months to July 2019	12 months to July 2020	12 months to July 2021	Number Difference 2020/21	% Difference 2020/21	Direction of Travel 2020/21
Priority 1 - More local, visible and accessible policing	Percentage of people who have confidence in policing in Essex (internal survey) ¹	66.7	69.7	79.8	10.1	-	Improving
	<i>Confidence Interval</i> ²	1.1	1.0	0.9			
	Confidence in the local police (CSEW) ³	52.4	46.9	48.6	1.6	-	Stable
	<i>Confidence Interval</i> ²	4.5	4.5	3.9			
	Number of all crime offences	164,492	158,659	154,309	-4,350	-2.7	Improving
	Harm (Crime Severity) Score - All Crime ⁸	13.1	13.1	12.7	-	-	Improving
Priority 2 - Crack down on anti-social behaviour	Emergency response attendance within 15 minutes (urban) or 20 minutes (rural)	71.9	76.9	80.9	4.0	-	Improving
	Number of anti-social behaviour incidents	43,585	46,819	54,292	7,473	16.0	Deteriorating
	Percentage of people who have confidence that the policing response to ASB is improving (internal survey) ⁴	64.5	69.4	69.8	0.4	-	Stable
	<i>Confidence Interval</i> ²	1.1	1.1	1.1			
Priority 3 - Breaking the cycle of domestic abuse	Number of incidents of domestic abuse	42,036	43,119	41,281	-1,838	-4.3	Improving
	Number of repeat incidents of domestic abuse	19,609	20,250	20,214	-36	-0.2	Improving
	Number of domestic abuse arrests	11,916	13,246	14,351	1,105	8.3	Improving
	Number of Domestic Violence Protection Notices (DVPNs) and Protection Orders (DVPOs)	171	219	222	3	1.4	Improving
	Number of domestic abuse offences solved	3212	3403	3094	-309	-9.1	Deteriorating
Priority 4 - Tackling gangs and serious violence	Number of homicides ⁷	16	61	21	-40	-65.6	Improving
	Number of violence with injury offences (new definition from Nov 2017)	14,941	14,518	13,915	-603	-4.2	Improving
	Harm (Crime Severity) Score for Violence with Injury, Rape, Other Sexual Offences and Robbery of Personal Property ⁸	7.5	7.7	8.0	-	-	Deteriorating
	Number of Violence with Injury, Rape, Other Sexual and Robbery of Personal Property Offences solved	3,086	2,959	2,741	-218	-7.4	Deteriorating
	Stop and search for weapons	1,872	3,737	1,317	-2,420	-64.8	Deteriorating
	Knife-enabled crime ⁹	826	1,400	1,521	121	8.6	Deteriorating
Priority 5 - Disrupting and preventing organised crime	Number of Organised Criminal Group disruptions ¹²	47	144	278	134	93.1	Improving
	Trafficking of drugs arrests	1,656	1,972	1,818	-154	-7.8	Deteriorating
Priority 6 - Protecting children & vulnerable people	Number of child abuse outcomes ⁵	229	384	316	-68	-17.7	Deteriorating
	Child abuse offences	4,529	5,391	5,904	513	9.5	Deteriorating
	Child abuse solved rate	5.1	7.1	5.4	-1.8	-	Deteriorating
	Child Sexual Abuse/Exploitation investigations	2,110	1,993	2,242	249	12.5	-
	Modern Slavery referrals made to the National Referral Model (NRM) ¹¹	45	110	139	29	26.4	Improving
Priority 7 - Improve safety on our roads	Number of driving related mobile phone crime on Essex roads ¹⁰	2,483	722	482	-240	-33.2	Improving
	Number of driving under the influence of drink and/or drugs on Essex roads	3,400	4,233	3,101	-1,132	-26.7	Improving
	All people killed or seriously injured (KSI) in road collisions ⁶	878	735	717	-18	-2.4	Improving

[Please view above table with the explanations and caveats detailed on page 19.](#)

End Notes

- ¹ Question from the independent survey commissioned by Essex Police (Percentage of people who have confidence in policing in Essex). Results are for the period 12 months June 2021 versus the 12 months to June 2020.
- ² The confidence interval is the range +/- between where the survey result may lie. This is mainly influenced by the number of people answering the survey. The more people that answer the survey, the smaller the interval range.
- ³ Crime Survey of England and Wales data are no longer available at Force level. Data are for the 12 months to March 2020.
- ⁴ Question from Essex Police's own confidence and perception survey (Percentage of people who have confidence that the policing response to ASB is improving). Results are for the period 12 months to June 2021 versus the 12 months to June 2020.
- ⁵ Solved outcomes are crimes that result in: charge or summons, caution, crimes taken into consideration, fixed penalty notice, cannabis warning or community resolution.
- ⁶ 'Killed or Seriously Injured' (KSI) refers to all people killed or seriously injured on Essex's roads, regardless of whether any criminal offences were committed. 'Causing Death/Serious Injury by Dangerous/Inconsiderate Driving' offences (detailed on p.11) refers to the number of crimes of this type.
- ⁷ Please note that on Wednesday 23 October 2019 the bodies of 39 Vietnamese nationals were discovered in a lorry trailer in Grays. This tragic incident is reflected in the Homicide numbers.
- ⁸ Crime Severity Score measures 'relative harm' of crimes by taking into account both the volume and the severity of offences, and by weighting offences differently. Data are for the 12 months to May 2021.
- ⁹ The number of knife crime offences is an indicator of how effective Essex Police is at identifying knife-enabled offences, and is not necessarily reflective of the number of these offences that have been committed in the county. This is because the identification of these offences is reliant on the appropriate indicator being manually added to the crime record. A manual review of knife flags was conducted and missing flags were added retrospectively. Additionally a new data quality process was introduced in June 2020. Whilst this has enabled us to better understand knife crime in Essex, the process has consequently inflated the figures. As such, no inferences can be drawn as to the current trend.
- ¹⁰ The year on year data for driving offences related to mobile phones are not comparable due to a legal appeal (which occurred in October 2019). The current phone use legislation is awaiting clarification in the courts, which has been delayed due to the impact of COVID-19. Since the appeal, fewer offences have been prosecuted.
- ¹¹ NRM data only available from April 2019 due to recording change at that time.
- ¹² OCG disruptions are now reported quarterly. Data are to June 2021.

Crime Tree Data – Rolling 12 Months to July

Table 2

Force

Crime Tree Data - Rolling 12 Months to July

Top Level		Offences										Solved Outcomes										Solved Rates %														
Crime Type	% DA 2021	2020	2021	# diff.	% diff.	Z	CSS	1m Jul 20	1m Jul 21	Yr on Yr 1m % diff.	3m Jul 20	3m Jul 21	Yr on Yr 3m % diff.	2020	2021	# diff.	% diff.	1m Jul 20	1m Jul 21	Yr on Yr 1m % diff.	3m Jul 20	3m Jul 21	Yr on Yr 3m % diff.	2020	2021	% pt. diff.	Z	1m Jul 20	1m Jul 21	Yr on Yr 1m % pt. diff.	3m Jul 20	3m Jul 21	Yr on Yr 3m % pt. diff.			
All Crime (excl. Action (NFIB) Fraud)	19.0	158659	154309	-4350	-2.7	1.7	-	14168	15293	7.9	39440	43631	10.6	24064	21244	-2820	-11.7	1987	1619	-18.5	6509	5082	-21.9	15.2	13.8	-1.4	-1.7	14.0	10.6	-3.4	16.5	11.6	-4.9			
- State Based Crime	6.5	27395	27747	352	1.3	2.0	-	2651	2807	5.9	8067	7845	-2.8	10205	9351	-854	-8.4	861	711	-17.4	3029	2211	-27.0	37.3	33.7	-3.6	-2.4	32.5	25.3	-7.1	37.5	28.2	-9.4			
- Victim Based Crime	21.7	131264	126562	-4702	-3.6	1.3	-	11517	12486	8.4	31373	35786	14.1	13859	11893	-1966	-14.2	1126	908	-19.4	3480	2871	-17.5	10.6	9.4	-1.2	-1.7	9.8	7.3	-2.5	11.1	8.0	-3.1			
Victim Based Crime																																				
Violence Against the Person																																				
- Homicide	34.2	64414	67881	3467	5.4	2.8	6	6282	6947	10.6	17324	19628	13.3	7449	7139	-310	-4.2	705	554	-21.4	2158	1726	-20.0	11.6	10.5	-1.0	-1.8	11.2	8.0	-3.2	12.5	8.8	-3.7			
- Violence with Injury	33.3	61	21	-40	-65.6	-0.1	14	2	2	0.0	5	5	0.0	60	13	-47	-78.3	2	1	-50.0	4	4	0.0	98.4	61.9	-36.5	-0.2	100.0	50.0	-50.0	80.0	80.0	0.0			
- Death or Serious Injury caused by unlawful driving	3.8	14518	13915	-603	-4.2	1.6	1	1421	1453	2.3	3737	4250	13.7	2358	2194	-164	-7.0	248	159	-35.9	692	544	-21.4	16.2	15.8	-0.5	-1.8	17.5	10.9	-6.5	18.5	12.8	-5.7			
- Death or serious injury by dangerous driving	0.0	18	20	2	11.1	-	-	0	3	-	2	5	150.0	28	23	-5	-17.9	0	3	-	7	5	-28.6	127.3	88.5	-38.8	0.1	-	100.0	-	233.3	100.0	-133.3			
- Death by careless driving (drink or drugs)	0.0	0	0	0	-	-	-	0	0	-	0	0	-	0	0	0	-	0	0	-	0	0	-	-	-	-	-	-	-	300.0	80.0	-220.0				
- Death by careless or inconsiderate driving	0.0	4	3	-1	-25.0	-	-	0	0	-	1	0	-100.0	7	3	-4	-57.1	0	0	-	1	0	-100.0	175.0	100.0	-75.0	-	-	-	-	100.0	-	-			
- Death or serious injury driving - unlicensed, disqualified, uninsured	0.0	0	1	1	-	-	-	0	0	-	0	0	-	0	1	1	100.0	0	0	-	0	1	-	-	-	-	-	-	-	-	-	-	-			
- Causing death by aggravated vehicle taking	50.0	0	2	2	-	-	-	0	0	-	0	0	-	0	2	1	-50.0	0	0	-	0	0	-	-	-	-	-	-	-	-	-	-	-			
- Violence without Injury	36.8	26982	26986	4	0.0	2.6	6	2438	2785	14.2	6921	7884	13.9	3177	3043	-134	-4.2	288	272	-5.6	919	765	-16.8	11.8	11.3	-0.5	-1.0	11.8	9.8	-2.0	13.3	9.7	-3.6			
- Stalking and Harassment	29.3	22831	26933	4102	18.0	2.5	8	2421	2704	11.7	6658	7484	12.4	1826	1866	40	2.2	167	119	-28.7	536	408	-23.9	8.0	6.9	-1.1	-2.1	6.9	4.4	-2.5	8.1	5.5	-2.6			
Sexual Offences																																				
- Rape	40.7	1962	2306	344	17.5	2.2	2	174	251	44.3	464	772	66.4	85	67	-18	-21.2	9	7	-22.2	24	20	-16.7	4.3	2.9	-1.4	-0.1	5.2	2.8	-2.4	5.2	2.6	-2.6			
- Rape - Under 16 yrs	4.5	471	601	130	27.6	1.4	4	45	60	33.3	124	195	57.3	42	35	-7	-16.7	5	4	-20.0	13	10	-23.1	8.9	5.8	-3.1	0.1	11.1	6.7	-4.4	10.5	5.1	-5.4			
- Rape - Over 16 yrs	53.5	1491	1705	214	14.4	2.3	2	129	191	48.1	340	577	69.7	43	32	-11	-25.6	4	3	-25.0	11	10	-9.1	2.9	1.9	-1.0	-0.3	3.1	1.6	-1.5	3.2	1.7	-1.5			
- Other Sexual Offences	10.9	2713	3124	411	15.1	1.9	5	277	324	17.0	722	993	37.5	369	353	-16	-4.3	27	28	3.7	101	118	16.8	13.6	11.3	-2.3	-0.4	9.7	8.6	-1.1	14.0	11.9	-2.1			
- Other sexual offences : Under 13	2.0	593	748	155	26.1	-	-	49	60	22.4	144	218	51.4	83	54	-29	-34.9	3	4	33.3	21	22	4.8	14.0	7.2	-6.8	-	6.1	6.7	0.5	14.6	10.1	-4.5			
- Other sexual offences : Under 16	4.1	809	883	74	9.1	-	-	81	84	3.7	210	292	39.0	138	137	-1	-0.7	10	4	-60.0	38	50	31.6	17.1	15.5	-1.5	-	12.3	4.8	-7.6	18.1	17.1	-1.0			
- Other sexual offences : Age 13 to 17	12.8	18	39	21	116.7	-	-	3	2	-33.3	4	8	100.0	1	2	1	100.0	0	0	-	1	1	0.0	5.6	5.1	-0.4	-	0.0	0.0	0.0	25.0	12.5	-12.5			
- Other sexual offences : Over 13	23.5	1010	1140	130	12.9	-	-	113	139	23.0	264	382	44.7	101	96	-5	-5.0	8	11	37.5	27	30	11.1	10.0	8.4	-1.6	-	7.1	7.9	0.8	10.2	7.9	-2.4			
- Other sexual offences : Over 16	33.3	9	12	3	33.3	-	-	1	0	-100.0	5	1	-80.0	0	0	0	-	0	0	-	0	0	-	0.0	0.0	0.0	-	0.0	-	0.0	-	0.0	0.0			
- Other sexual offences : Not Age Specific	4.0	274	302	28	10.2	-	-	30	39	30.0	95	92	-3.2	46	64	18	39.1	6	9	50.0	14	15	7.1	16.8	21.2	4.4	-	20.0	23.1	3.1	14.7	16.3	1.6			
Robbery																																				
- Robbery of business property	2.6	1407	1303	-104	-7.4	0.3	13	133	133	0.0	346	343	-0.9	173	158	-15	-8.7	12	23	91.7	49	45	-8.2	12.3	12.1	-0.2	1.6	9.0	17.3	8.3	14.2	13.1	-1.0			
- Robbery of Personal Property	2.8	108	97	-11	-10.2	-0.9	16	8	6	-25.0	23	18	-21.7	26	31	5	19.2	1	0	-100.0	7	2	-71.4	24.1	32.0	7.9	-1.1	12.5	0.0	-12.5	30.4	11.1	-19.3			
- Other Robberies	2.8	1299	1206	-93	-7.2	0.5	7	125	127	1.6	323	325	0.6	147	127	-20	-13.6	11	23	109.1	42	43	2.4	11.3	10.5	-0.8	2.3	8.8	18.1	9.3	13.0	13.2	0.2			
Theft Offences																																				
- Burglary	2.9	44291	37497	-6794	-15.3	-0.4	-	3248	3528	8.6	8651	10124	17.0	4181	2751	-1430	-34.2	218	171	-21.6	699	592	-15.3	9.4	7.3	-2.1	-1.9	6.7	4.8	-1.9	8.1	5.8	-2.2			
- Burglary Residential	3.2	6734	4680	-2054	-30.5	-0.7	3	446	449	0.7	1291	1214	-6.0	281	303	22	7.8	16	10	-37.5	57	44	-22.8	4.2	6.5	2.3	-0.9	3.6	2.2	-1.4	4.4	3.6	-0.8			
- Burglary Business & Community	0.2	2268	1658	-610	-26.9	-1.2	12	117	113	-3.4	386	371	-3.9	190	119	-71	-37.4	10	7	-30.0	34	29	-14.7	8.4	7.2	-1.2	-0.2	8.5	6.2	-2.4	8.8	7.8	-1.0			
- Burglary Dwelling (pre-Apr 17 definition)	4.7	4685	3081	-1604	-34.2	-0.7	-	312	294	-5.8	799	800	0.1	260	282	22	8.5	15	7	-53.3	52	40	-23.1	5.5	9.2	3.6	-1.0	4.8	2.4	-2.4	6.5	5.0	-1.5			
- Burglary Other (pre-Apr 17 definition)	0.3	4317	3257	-1060	-24.6	-1.0	-	251	268	6.8	878	785	-10.6	211	140	-71	-33.6	11	10	-9.1	39	33	-15.4	4.9	4.3	-0.6	-0.1	4.4	3.7	-0.7	4.4	4.2	-0.2			
- Vehicle Offences (incl. Interference)	1.3	12773	10907	-1866	-14.6	-1.0	-	876	868	-0.9	2336	2683	14.9	363	241	-122	-33.6	18	17	-5.6	62	47	-24.2	2.8	2.2	-0.6	-0.1	2.1	2.0	0.1	2.7	1.8	-0.9			
- Theft from a Vehicle	0.3	6557	5558	-999	-15.2	-1.2	13	466	442	-9.4	1209	1372	13.5	125	61	-64	-51.2	6	0	-100.0	17	6	-64.7	1.9	1.1	-0.8	-1.4	1.3	0.0	-1.3	1.4	0.4	-1.0			
- Theft of a Vehicle	3.2	4318	3716	-602	-13.9	-0.7	10	291	326	12.0	797	952	19.4	157	145	-12	-7.6	10	13	30.0	35	32	-8.6	3.6	3.9	0.3	0.5	3.4	4.0	0.6	4.4	3.4	-1.0			
- Vehicle Interference	0.2	1898	1633	-265	-14.0	-1.1	21	119	120	0.8	330	359	8.8	81	35	-46	-56.8	2	4	100.0	10	9	-10.0	4.3	2.1	-2.										

Crime Tree Data – Rolling 12 Months to July

Table 3

Victim Based: Under Reported		Offences										Solved Outcomes										Solved Rates %											
Crime Type	% DA 2021	2020	2021	# diff.	% diff.	Z	CSS	1m Jul 20	1m Jul 21	Yr on Yr 1m % diff.	3m Jul 20	3m Jul 21	Yr on Yr 3m % diff.	2020	2021	# diff.	% diff.	1m Jul 20	1m Jul 21	Yr on Yr 1m % diff.	3m Jul 20	3m Jul 21	Yr on Yr 3m % diff.	2020	2021	% pt. diff.	Z	1m Jul 20	1m Jul 21	Yr on Yr 1m % pt. diff.	3m Jul 20	3m Jul 21	Yr on Yr 3m % pt. diff.
Racial/Religiously Aggravated Offences	1.4	1677	1923	246	14.7	2.2		202	212	5.0	528	608	15.2	284	271	-13	-4.6	33	20	-39.4	86	65	-24.4	16.9	14.1	-2.8	-1.1	16.3	9.4	-6.9	16.3	10.7	-5.6
Hate Crime HO Definition	3.5	3172	4008	836	26.4	3.0		347	477	37.5	953	1330	39.6	397	398	1	0.3	36	25	-30.6	116	97	-16.4	12.5	9.9	-2.6	-1.6	10.4	5.2	-5.1	12.2	7.3	-4.9
Domestic Abuse	100.0	30232	29263	-969	-3.2	2.1		2639	2820	6.9	7741	8120	4.9	3403	3094	-309	-9.1	296	223	-24.7	940	752	-20.0	11.3	10.6	-0.7	-1.7	11.2	7.9	-3.3	12.1	9.3	-2.9
- High Risk Domestic Abuse	100.0	2670	2716	46	1.7	2.2		200	294	47.0	674	843	25.1	741	714	-27	-3.6	58	63	8.6	172	190	10.5	27.8	26.3	-1.5	-1.3	29.0	21.4	-7.6	25.5	22.5	-3.0
- Medium Risk Domestic Abuse	100.0	4517	3415	-1102	-24.4	-0.8		359	310	-13.6	1031	1002	-2.8	1009	666	-343	-34.0	79	41	-48.1	245	139	-43.3	22.3	19.5	-2.8	-1.4	22.0	13.2	-8.8	23.8	13.9	-9.9
- Standard Risk Domestic Abuse	100.0	21495	21848	353	1.6	2.2		1901	2052	7.9	5606	5886	5.0	1472	1554	82	5.6	142	106	-25.4	479	376	-21.5	6.8	7.1	0.3	-1.2	7.5	5.2	-2.3	8.5	6.4	-2.2
- No Risk Assessment	100.0	1550	1284	-266	-17.2	-1.0		179	164	-8.4	430	389	-9.5	181	160	-21	-11.6	17	13	-23.5	44	47	6.8	11.7	12.5	0.8	-0.1	9.5	7.9	-1.6	10.2	12.1	1.8
State Based Crime		Offences										Solved Outcomes										Solved Rates %											
Crime Type	% DA 2021	2020	2021	# diff.	% diff.	Z	CSS	1m Jul 20	1m Jul 21	Yr on Yr 1m % diff.	3m Jul 20	3m Jul 21	Yr on Yr 3m % diff.	2020	2021	# diff.	% diff.	1m Jul 20	1m Jul 21	Yr on Yr 1m % diff.	3m Jul 20	3m Jul 21	Yr on Yr 3m % diff.	2020	2021	% pt. diff.	Z	1m Jul 20	1m Jul 21	Yr on Yr 1m % pt. diff.	3m Jul 20	3m Jul 21	Yr on Yr 3m % pt. diff.
Drug Offences	0.0	6959	6215	-744	-10.7	-0.5		559	435	-22.2	2130	1397	-34.4	6432	5583	-849	-13.2	545	369	-32.3	1941	1283	-33.9	92.4	89.8	-2.6	-0.9	97.5	84.8	-12.7	91.1	91.8	0.7
- Trafficking of Drugs	0.0	1071	1276	205	19.1	0.5		97	97	0.0	307	293	-4.6	798	958	160	20.1	78	62	-20.5	231	242	4.8	74.5	75.1	0.6	-0.7	80.4	63.9	-16.5	75.2	82.6	7.3
- Possession of Drugs	0.0	5888	4939	-949	-16.1	-0.7		462	338	-26.8	1823	1104	-39.4	5634	4625	-1009	-17.9	467	307	-34.3	1710	1041	-39.1	95.7	93.6	-2.0	-0.5	101.1	90.8	-10.3	93.8	94.3	0.5
Possession of Weapons	1.0	1367	1243	-124	-9.1	0.5		107	135	26.2	350	338	-3.4	796	734	-62	-7.8	59	71	20.3	203	171	-15.8	58.2	59.1	0.8	-0.8	55.1	52.6	-2.5	58.0	50.6	-7.4
Public Order	7.7	15481	16858	1377	8.9	2.7		1685	1933	14.7	4636	5182	11.8	2209	2370	161	7.3	195	212	8.7	673	594	-11.7	14.3	14.1	-0.2	-1.5	11.6	11.0	-0.6	14.5	11.5	-3.1
Miscellaneous Crimes against Society	14.4	3588	3431	-157	-4.4	0.0		300	304	1.3	951	928	-2.4	768	664	-104	-13.5	62	59	-4.8	212	163	-23.1	21.4	19.4	-2.1	0.4	20.7	19.4	-1.3	22.3	17.6	-4.7

Crime Severity Score (CSS) - Based on the ONS Crime Severity Score which replaces the Cambridge Harm Index - data are for the 12 months to May 2021, (a total of 21 crime types have been ranked where scores are available).

The CSS excludes proactively generated crime detection by police i.e. State Based Crime, as these offences do not reliably measure harms experienced by the population. Rather, they measure the resources invested in catching offenders.

Yr on Yr 1m %/ % pt. diff. - compares the month of July 2021 with the month of July 2020.

Yr on Yr 3m %/ % pt. diff. - compares the three months to July 2021 with the three months to July 2020.

Z Score - Standard Score over 1.96 or under -1.96. Standard Scores are used to calculate the probability of an event occurring within a normal distribution; they are also used to compare two scores from different normal distributions (for example the number of offences per police District). In this document, Standard Scores are calculated in the following way: (current month's figure, minus the average figure per month over the previous three years) divided by the Standard Deviation of the same three year period. Standard Deviation is a measure to determine how spread out figures are from the average or "mean" a large standard deviation indicates the data is widely spread; if small, the data will be more clustered together.