



<b>Meeting</b>	<b>Strategic Board</b>	Agenda Item	10
<b>Meeting Date</b>	11 June 2020	Report Number	
<b>Report Author:</b>	AM J. Palmer		
<b>Presented By</b>	Maira Bruin		
<b>Subject</b>	<b>Protection Strategy with Risk Based Inspection Programme</b>		
<b>Type of Report:</b>	Decision		

## **RECOMMENDATIONS**

The Strategic Board are asked to approve the attached strategy.

## **BACKGROUND**

Following the inspection from Her Majesties Inspector of Constabulary and Fire and Rescue Services (HMICFRS) in July 2019 four areas of concern were identified in relation to the Effectiveness pillar, these were:

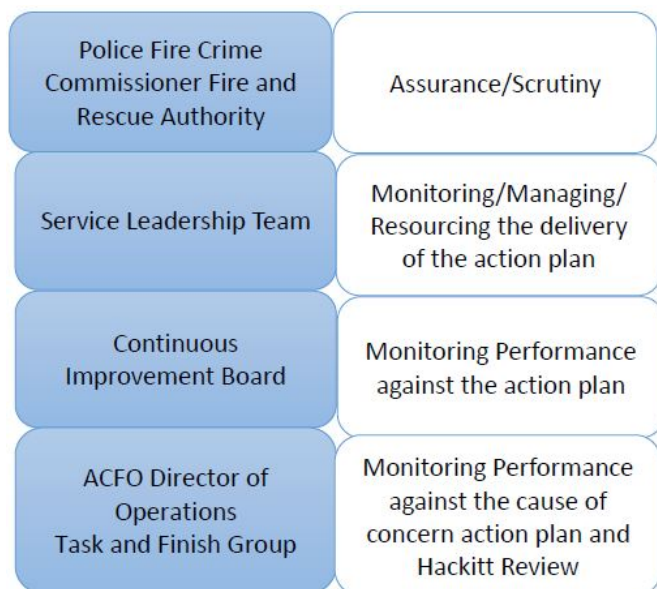
- Essex County FRS doesn't have a clear strategy for ensuring compliance with fire safety regulations
- The service isn't carrying out the number of audits of high – risk premises that it commits to as part of its Risk Based Inspection Programme (RBIP)
- The service doesn't quality assure audits to ensure they are effective
- The service doesn't have a clear programme to ensure operational staff are competent to carry out inspections.

This paper sets out how the service intends to address these issues along with the associated timeframes and governance.

The document that drives the future direction of the Protection function within ECFRS is the strategy. That strategy and RBIP are attached to this paper.

## OPTIONS AND ANALYSIS

ECFRS recognises the areas of concern identified by HMICFRS and agreed that these are areas that need to be enhanced.



- Continuous Improvement Board
- SLT
- Performance and Resources
- Strategic Board

This structure has been set up to ensure that the service leadership team are sighted on progress and that the Office of the Police, Fire and Crime Commissioner has effective oversight and is empowered to hold ECFRS to account for delivery of the action plan.

Key Areas of focus for the first six months of the plan are:

- Technical Fire Safety function currently has 9 vacancies in the budget. These are being filled externally and internally; staff will need to be trained prior to being fully qualified to carry out audits
- SLT have agreed in principle to over establish TFS inspecting officers with an expectation that the numbers will have to be increased over time. Funding for these posts will be achieved in the short term from temporarily moving unfilled budgeted posts from Prevention
- An overarching strategy will be produced
- High risk will be defined as: A high risk building is a building where the impact of a fire can be catastrophic. These are buildings where a lot of people live, sleep, are in need of care and/or cannot escape quickly or easily in case of a fire emergency. The risks of losing lives due to a fire are high within this category of buildings.
- Based on this definition a Risk Based Inspection Programme will be developed with a view to mitigating life risk as this is the main area of focus under the RRO.

The first piece of this work is the strategy. (Appendix A)

This high-level document forms the platform for the future direction of TFS and will be underpinned by a RBIP and an enforcement policy.

The strategy is aligned to the Building Fire Safety regulators national framework and clearly identifies the definition of a high risk premise. It also highlights the need for the organisation to be able to resource to a sufficient level to be able to understand the changing risk within the built environment following recent developments post Grenfell. The strategy allows the service to be agile enough to react to emerging trends whilst being robust and transparent enough to clearly identify the higher risk areas and target resources accordingly.

## **BENEFITS AND RISK IMPLICATION**

The benefit of approving the strategy is that it provides a framework for the service to resource, identify and mitigate risk within the Protection function under the RRO. This would have the effect of reducing risk to the people of Essex and ensuring we are able to deliver our responsibilities under legislation.

## **FINANCIAL IMPLICATIONS**

None in this paper other than those noted above.

## **EQUALITY AND DIVERSITY IMPLICATIONS**

None in this paper.

## **WORKFORCE ENGAGEMENT**

None for the purposes of this paper.

## **LEGAL IMPLICATIONS**

Under the Regulatory Reform (Fire Safety) Order the service has a legal obligation to identify risk and carry out inspections relevant to the risk.

## **HEALTH AND SAFETY IMPLICATIONS**

None for the purposes of this paper.