

## Performance and Resources Scrutiny Programme 2020

### Report to the Office of the Police, Fire and Crime Commissioner for Essex

<b>Title of Report:</b>	<b>Crime Prevention Strategy Report</b>
<b>Classification of Paper:</b>	<b>Official</b>
<b>Agenda Number:</b>	<b>8</b>
<b>Chief Officer:</b>	<b>ACC Nolan</b>
<b>Date Paper was Written:</b>	<b>31/08/2020</b>
<b>Version Number:</b>	<b>1.0</b>
<b>Report from:</b>	<b>Essex Police</b>
<b>Date of Meeting:</b>	<b>24/09/2020</b>
<b>Author on behalf of Chief Officer:</b>	<b>Chief Inspector 3027 Balding Superintendent 79227 Davies</b>
<b>Date of Approval:</b>	<b>05/09/2020</b>

#### 1.0 Purpose of Report

The report covers for each of the nine thematic strands of the Crime Prevention Strategy 2018-21 (herein 'the Strategy'):

- **Dashboard** of progress of the associated Delivery Plan;
- **Work strands at risk** and mitigating action leading to the transfer, tolerate, treat, terminate or take the opportunity in relation to that risk;
- **Insights** to show/illustrate data insights for minimum of rolling 12 months up to end of last quarter;
- **Delivery achieved previous quarter** and the impact on data, outputs and/or outcomes;
- **Delivery schedule for current quarter** and the anticipated impact on data, outputs and/or outcomes and when this will be realised.

## 2.0 **Recommendations**

The Board are asked to note the content and provide comment on the new report format.

## 3.0 **Executive Summary**

### 3.1 **Dashboard summary**

Delivery Plan progress across the 9 thematic strands can be summarised as:

	<b>Total Strands</b>	<b>Complete</b>	<b>Ongoing/In progress</b>	<b>At risk</b>
<a href="#">Domestic Abuse</a>	60	46	13	1
<a href="#">Gangs and Knife Crime</a>	36	18	16	2
<a href="#">Night-time Economy (NTE)</a>	24	11	13	0
<a href="#">Child Abuse and Exploitation</a>	30	1	17	0
<a href="#">Extremism and Radicalisation</a>	15	11	4	0
<a href="#">Hate Crime</a>	30	15	15	0
<a href="#">Digital Crime and Fraud</a>	48	17	31	0
<a href="#">House Burglary and Street Robbery</a>	N/A	N/A	N/A	N/A
<a href="#">Serious and Organised Crime</a>	17	9	8	0
<b>Total</b>	<b>260</b>	<b>128 (49%)</b>	<b>129 (50%)</b>	<b>3 (1%)</b>

### 3.2 **Strands at risk**

There are three strands reported at risk of delivery.

Domestic Abuse; the resourcing of DA teams. A proposal is currently under consideration to focus police uplift programme resources on prevention activity.

Two risks are held in respect of Gangs and Knife crime;

- 1) Terms of reference of Serious Violence Unit teams – mitigating action of development day was cancelled due to CoVid. Alternative mitigation saw a Terms of Reference completed and shared with relevant internal stakeholders;
- 2) Enhanced community representatives to support Essex Police development. Mitigating action has been Essex Police engagement with IAGs and the SIAG.

House Burglary and Street Robbery Delivery Plan is in development and scheduled for launch December 2020.

### 3.3 **Delivery/challenges by exception**

#### 3.3.1 **CoVid19 recovery**

Op TALLA continues to operate with a dedicated Superintendent and Command structure.

Since the start of Op Talla, Essex Police's (EP) approach to dealing with suspected breaches of the Coronavirus Act 2020 offences and the Health Protection Regulations has fallen in line with the national policing four-step escalation

principles; Engage, Explain, Encourage and, as a last resort, Enforce. This response is referred to as the 4E approach and continues to serve us well in balancing the need for public safety and enforcing the law.

EP has issued a relatively low number of Fixed Penalty Notices (FPN). This, coupled with the positive public satisfaction results on how people believe we have responded to the pandemic, lends itself to concluding we have benefited from our positive relationship with the public and struck the right balance.

A key message during the economic recovery has been 'Essex is open for business but closed for crime'. The Business Crime Team has continually worked with partners, commercial premises including Chamber of Commerce and Federation of Small Businesses to ensure an informed opening of trade in relation to regulations.

A significant area of focus has been the reopening of the NTE, and the work EP's Licensing Team have completed in partnership with Local Authority partners. This has included a responsive and proactive strand; utilising data insights to identify 'repeat premises' across a range of crime types such as ASB and completing partnership visits to review license compliance.

### **3.3.2 Black Lives Matter (BLM)**

There were 9 BLM protests organised across Essex (7 in June 1 in July and 1 in August 2020) all of which were conducted without arrest or significant community impact.

Local Policing Support Unit continues to monitor community tensions, Hate Crime, Prevent and Immigration Crime and reports weekly to National Community Tension Team (NCTT).

### **3.3.3 Unlicensed Music Events (UME)**

In line with national trends, Essex has seen the emerging trend of Unlicensed Music Events being planned and executed during July and August. EP have disrupted 24 UMEs between 24 July and 09 August 2020.

Operation Silver Dawn is EP's response and the Force's position is clear; it is the aim of the Force to police 'raves' and other unlicensed music events in order to, minimise the disruption caused to the public, reduce and tackle anti-social behaviour and preserve the safety of the public, police officers and police staff.

EP is utilising a range of sources (local, national and global) in order to achieve early identification of UME in planning. Essex and Kent Serious Crime Directorate are running Op Victoria to accompany the Op Silver Dawn response plan. Op Victoria is the name of the intelligence collection for all unlicensed music events across both forces. This information is shared through regionally to ensure opportunities to disrupt events and reduce ASB within the community are taken and a suitable response is created.

A dedicated Command structure has been allocated for every Friday to Sunday until the end of the summer.

#### 4.0 **Crime Prevention Strategy 2021-24 progress**

As reported in the previous update, Essex Police are committed to develop a stronger new Crime Prevention Strategy (2021-24). The dedicated Superintendent and Local Policing Support Unit in collaboration with thematic leads have progressed on schedule the delivery of an ambitious programme as outlined below:

- Utilising insight and analytical predictors it has been possible to identify cross Command and partnership thematic areas which are anticipated to cause the biggest threat, harm and risk to communities from 2021 onward; these are the strands for the Crime Prevention Strategy 2021-24 and are grouped as Serious Violence, Organised Crime and Complex Needs;
- The thematic leads have adopted the LPSU recommended revised model for the Strategy and reporting which includes Crime Prevention Tactical Advisors aligned and supporting the thematic leads to identify best practice, lessons learnt, innovative responses and whole system approaches to cross-cutting thematic;
- Most thematic strands have developed a 4P Delivery Plan with all thematic strands scheduled to achieve this model by January 2021;

#### **Next Steps:**

- 07 September 2020 presentation of Strategy and Delivery Plan proposal to Safer Essex to explore partners 'buy in' and capacity and capability of delivery;
- September to November 2020 Partnership consultation and co-production of the Strategy;
- December 2020 – final draft
- 19 January 2021 – Launch of Crime Prevention Strategy 2021-24 (format to be confirmed)

#### 5.0 **Thematic Strand Updates:**

##### 5.1 **Domestic Abuse** - Thematic Lead: Chief Superintendent Andrew Mariner

#### **Delivery Plan progress dashboard:**

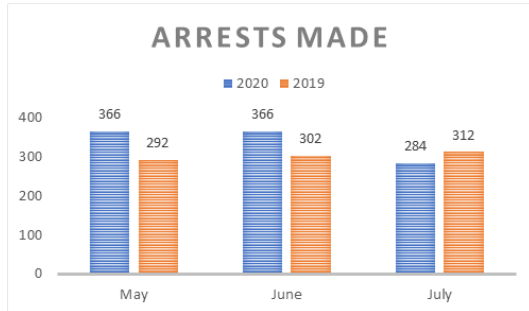
<b>Domestic Abuse Delivery Plan Progress</b>	2020/21				2021/22			
	Q1	Q2	Q3	Q4	Q1	Q2	Q3	Q4
Total strands	60	60						
Complete	41	46						
Ongoing / In progress	18	13						
At risk	1	1						

**Identified risk**

There is currently one risk which surrounds resourcing. The proposed mitigation is to increase prevention activity through dedicated resources.

**Insight**

Chief Officer scrutiny is now in place in the form of a monthly DA Oversight Board, which is now in third cycle.



Notwithstanding the CoVid effect which is likely to have impacted May and June there is an improvement in DA performance on several areas over the last quarter and over a rolling 12-month period including arrests made.

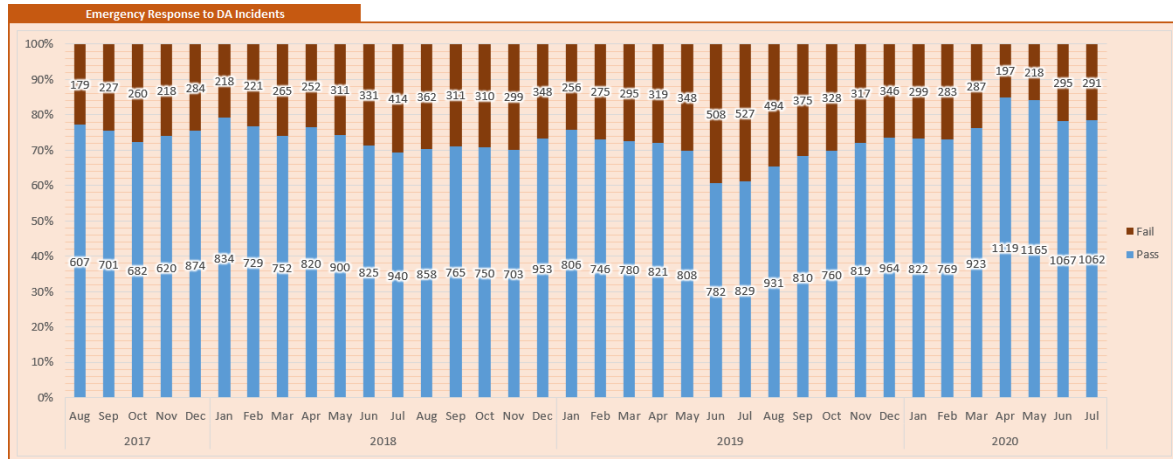
Increasing use of DVPOs remains a significant area of strength for the force and Essex Police are recognised

nationally in this area:

Month DVPN/O granted	2019	2020	Breaches	Performance improvement compared to previous year
January	6	19		+ 216%
February	14	19		+ 35%
March	14	22	6	+ 57%
April	9	27	6	+ 200%
May	16	16	7	0%
June	21	21	6	0%
July	22	26	7	+ 18%

**Delivery achieved previous quarter:**

Over the past three years there has been a continual increase in Domestic Abuse calls for service. We are now meeting or exceeding our targets consistently. This is measured through call attendance, arrests, positive outcomes and reduction of outcome 15/16 and implementation of DVPO'S. Performance in this area has seen sustained and continual improvement over the last 4 cycles.



**Delivery scheduled for current quarter:**

A decrease in referrals to Victim Support over the past quarter is cause of slight concern. DAGB have commissioned a piece of work to understand this further and will act accordingly.

A detailed internal comms plan which will include a Domestic Abuse knowledge hub for officers and staff is currently in development.

**5.2 Gangs and Knife Crime - Thematic Lead: D/Supt Leighton Hammett**

**Delivery Plan progress dashboard:**

Knife Crime Delivery Plan Progress	2020/21				2021/22			
	Q1	Q2	Q3	Q4	Q1	Q2	Q3	Q4
Total strands	13	13						
Complete	7	7						
Ongoing / In progress	6	6						
At risk	0	0						

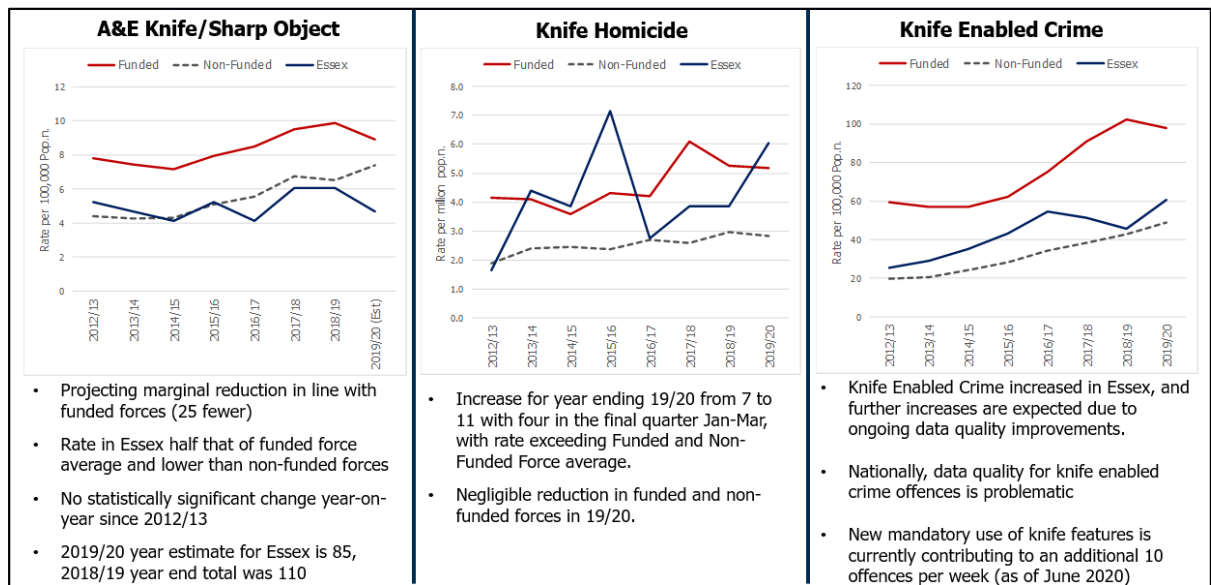
Gangs/ County Lines Delivery Plan Progress	2020/21				2021/22			
	Q1	Q2	Q3	Q4	Q1	Q2	Q3	Q4
Total strands	23	23						
Complete	11	11						
Ongoing / In progress	10	10						
At risk	2	2						

**Strands at risk:** The following strands of delivery have been identified as 'at risk'.

Ref No	Date registered	Risk Description	Owner	Mitigation
A13	11/05/2020	Ensure there is process synergy between Raptor investigation and Missing Persons, Schools, Child and Adult	Gangs Prevent Officer - VVU	CPD Days for Raptor teams and analysts had been organised but where cancelled due to COVID, communication ongoing to re-

		Protection and partnership enforcement and safeguarding.		<p>schedule when the current conditions allow.</p> <p>Mitigation has taken place by six safeguarding officers being appointed in Op Raptor teams who have now received heightened training.</p> <p>CPD days will be rolled out when safe to do so.</p> <p>Risk deemed low and can be tolerated.</p>
A16	11/05/2020	Develop and support a cohort of community representatives that can provide the 'community voice' where appropriate devise community consultation groups – Community Listening events / Youth Ambassadors / Youths Parliament.	Gangs Prevent Officer - VVU	<p>Prevent Protect Officer to lead. This activity has been hampered by the fact the Gangs officer only started in January and then the COVID issues re bringing people together, this will be recommended once conditions allow.</p> <p>Risk deemed low and can be tolerated.</p>

**Insight**



**Delivery achieved previous quarter:**

**Knife Crime**

- Op Sceptre proactive deployments have resulted in 543 arrests and have been attributed to Op Sceptre funded activity. Positive feedback received from the Home Office on Q1 - 2020 return recognising EP's continued proactive deployment during COVID / Lockdown which has not been mirrored by other Forces.

- Knife enabled crime has shown an increase in the last six months to 60 offences per 100,000 population, that said we are a positive outlier when compared to other surge funded forces who average at 100 offences per 100,000 population. Improved data quality has contributed to the increase.
- Analysts attribute some of our increase due to better data quality improvements. In June 2020 the flagging of knife enabled crime was implemented, so going forward we will have a consistent data set to compare against.
- The Violence & Vulnerability Unit continue to support and commission prevention work in the Knife Crime area, one such initiative has seen gangs' workers and music professionals working with gangs / County line members in HMP Chelmsford due for release.

### **Gangs / County Lines**

- The Serious Violence Unit (SVU) within OPC went live on 06 July 2020, which moved the three existing Raptor Teams to a central command. Benefits of this new model are already being seen, with Raptor Teams now targeting middle market and principle members, dismantling whole County Lines.
- A recent example was the Dollar Line in the South. Op Raptor used phone analytics and an Op Orochi approach resulting in 4 x arrests made including the two principle members and 5.5k cash recovered. The line is no longer operating, having been running since 2018.
- Op Sceptre regional initiatives have resulted in 32 arrest, 7 offensive weapons (knives) seized and 17 vehicles recovered. The Essex contingent accounted for 9 x Arrests, 13 x Stop Searches, 5 x Vehicle seizures and £40,000 Cash seized.
- Under the SVU each Raptor Team now has dedicated Safeguarding officers (six in total), who have all received enhanced training around the national referral mechanisms, criminal exploitation and trauma informed interview techniques, looking to identify and divert vulnerable adults and children away from exploitation.
- The 'localities' workstream of the Violence and Vulnerability work has identified 11 wards across five districts (Basildon, Southend, Colchester, Tendring and Thurrock) in which 25% of all known serious violence perpetrators live.

### **Delivery scheduled for current quarter:**

#### **Knife Crime**

- Revised mapping to be included in tasking documents, using the Risk Terrain Model (RTM) to heat map the areas that see the most community violence, this will allow for proactive taskings in these areas to reduce the violence and give CSP's areas to problem solve against.
- A 90-day hot spot is Home Office supported trial in Southend. This uses tracking devices to plot police patrol and engage with community in areas high community violence. A strong evidence base shows the approach can reduce violence without displacing it.
- Op Gloss implemented as of the 01 July 2020. (Working with Border Force to intercept prohibited weapons and drugs being imported into Essex).

#### **Gangs / County Lines**

- Essex Police are now recruiting to have a dedicated Op Orochi Team within the Serious Violence Unit.



- Embed the new gangs tasking model, that is now completed force wide and will focus on the gangs and county lines posing the greatest risk of harm and exploitation.
- Through the SVU, ensure we are taking a holistic 4P approach to tackling Gangs and County Lines, utilising the Violence and Vulnerably Board to engage partners around diversion and prevention.

**5.3 Night Time Economy - Thematic Lead: Supt John Hallworth**

**Delivery Plan progress dashboard:**

Night Time Economy Delivery Plan progress	2020/21				2021/22			
	Q1	Q2	Q3	Q4	Q1	Q2	Q3	Q4
Total strands	24	24						
Complete	1	11						
Ongoing / In progress	23	13						
At risk	0	0						

**Strands at risk:** There are currently no strands at risk.

**Insight**

Extracted from Night Time Economy (NTE) Insight report 20 April 2020.

**Key Findings**

**People**

- Those between 18-30 years are 3 x overrepresented in NTE crimes (peak age for violence and sexual offences being between ages 18-22).
- Males disproportionately represented victims and suspects of violent crimes; females are almost entirely victims of sexual offences perpetrated almost entirely by males.
- Repeat victimisation in NTE offences is rare (91% of victims with one NTE offence). Repeat cases often involved a perpetrator who was known to the victim prior to the offence.
- Reoffending more likely than repeat victimisation, with almost 1 in 5 committing subsequent offences.
- Opportunity to increase the proportion of all crime harm detected by focusing investigations on more serious assaults and sexual offences which carry greater socio-economic costs to society, and also contribute more disproportionately to fear and feelings of safety.

**Behaviours**

- Most of NTE violence is reduced inhibitions caused by alcohol consumption leading to disagreements and escalating verbal altercations. Most victims and offenders are previously unknown to police and do not come to notice again therefore Offender management and follow-up is an ineffective control strategy
- Sexual offences differ and are likely to involve repeat offenders purposefully seeking out vulnerable targets. These can be difficult to identify, particularly in cases where assaults were drug facilitated and victims have limited recollection of events.

**Places**

- NTE offences are highly concentrated in our four largest built-up-areas (Southend, Colchester, Chelmsford, Clacton-on-Sea) cumulatively containing more than 60% of harm/volume. This extends to over 80% when adding Harlow, Westcliff-on-Sea (London Road), Basildon and Brentwood.
- Most NTE areas in Essex have exceptionally low volumes of offences and few high harm offence classifications. These areas are suitable for managing risky venues by exception should they cause concern, but other efforts would be disproportionate (Wickford, Leigh, Halstead, Billericay, Harwich, Witham, Loughton, Maldon, Epping).
- Risk Terrain Model was used to identify risk settings across the four main NTE areas. This can enable partnership problem solving approaches with aim of improving practice and compliance at all risk settings (licensed premises, hotels, takeaways etc).

**Delivery achieved previous quarter:**

The main activity across Q1 was in the following areas and much other activity was stymied due to COVID-19:

- Creation of a usable dashboard for operational leaders and partnerships to target resources.
- Clarity of primary and secondary NTE areas and the geographic boundaries of those areas.
- Risky people and places examined and targeting methodology established
- Evidence base applicable to Insight data on our problem examined and disseminated
- 4-P plans individually for Primary NTE areas established
- Risky venue engagement in the re-opening of licensed premises, dedicated plans and responses in all Districts

**Delivery scheduled for current quarter:**

The main activity that is and will be delivered across Q2 is:

- Reinvigoration of OP BENISON in primary NTE areas
- Plan for test purchase operations in all primary NTE areas in Q3
- Better sharing of NTE Harm reduction dashboard with partners to address problem profiles in each primary NTE area, integrating NTE Insights and problems into district tasking more effectively in the primary NTE areas
- Develop targeted festive period NTE plans for primary NTE areas

**5.4 Child Abuse and Exploitation - Thematic Lead: T/DCS Elliott Judge**

**Delivery Plan progress dashboard:**

Child Abuse and Exploitation Delivery Plan Progress	2020/21				2021/22			
	Q1	Q2	Q3	Q4	Q1	Q2	Q3	Q4
Total strands	29	30						

Complete	12	12						
Ongoing / In progress	17	17						
At risk	0	0						

**Strands at risk:** There are currently no strands contained within the delivery plan at risk at this time.

**Insight**

Extracted from the Vulnerable Groups Quarterly Report provided for the OPFCC Performance and Resources Scrutiny Programme Board 27 August 2020, relevant Q1 data highlighted:

- POLIT captured 62 referrals received from the NCA and 58 warrants executed, this is an increase in 22 referrals and 1 warrant compared to Q1 2019/20. During this quarter POLIT safeguarded a total of 61 children.
- C&PP Operations Centre received 90 CSE triage referrals, a decrease of 32, compared to 122 the previous quarter.
- C&PP Operations Centre received requests to attend 79 CSE triage meetings, an increase of 16 from 63 the previous quarter.

**Delivery achieved previous quarter**

- POLIT are well engaged with Home Office, being one of 6 pilot Forces, trialling two new technology products, Cyan and Qumodo, to help identify indecent images and utilising artificial intelligence to grade them.
- The completed action from the VAP for Q1 2020/21 relates to opportunities for the Force to work with the Eastern Regions Special Operations Unit (ERSOU) to run CSE and missing children’s related phone numbers against phone data from county lines operations in order to identify links and improve the intelligence picture.
- Links have been made with ERSOU to enable Raptor leads in Essex Police to complete these checks for intelligence/to further an investigation for Essex Police.

**Delivery scheduled for current quarter**

- The CSE Investigation Team went live 13 July 2020. The CSE Investigation Team will identify and develop proactive opportunities where victim led investigations cannot be progressed and work alongside multi-agency partners to mitigate the risks to victims and develop a safeguarding framework.
- POLIT are entering the official pilot stage of the Cyan product now. Cyan (Examiner) is a fast-forensic triage tool that claims to find known files matched to a CAID (Child Abuse Image Database) contraband filter quickly. Essex are the only force currently undertaking this work for the first 3 weeks before it is rolled out to other pilot forces.

**5.5 Extremism and Radicalisation - Thematic Lead: Supt Michelle Davies**

**Delivery Plan progress dashboard:**

In May 2020 the Essex CONTEST Board EP adopted a local Prevent Delivery Plan (PDP 2020/21) (Appendix 1). The PDP focusses on the 9 national recommendations from the HMICFRS CT4 inspection; these national recommendations were distilled into 15 local work strands. HMICFRS have indicated January 2021 as completion for recommendations.

Extremism and Radicalisation Delivery Plan Progress	2020/21				2021/22			
	Q1	Q2	Q3	Q4	Q1	Q2	Q3	Q4
Total strands	15	15						
Complete	7	11						
Ongoing / In progress	8	4						
At risk	15	0						

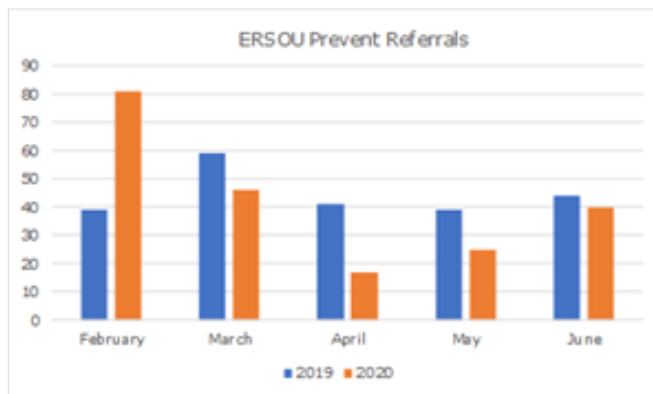
In addition, EP and ERSOU are required to update a CTLP Action Tracker.

CTLP progress	2020/21				2021/22			
	Q1	Q2	Q3	Q4	Q1	Q2	Q3	Q4
Unallocated / Not progressed	3	0						
Deferred	N/A	0						
Ongoing / In progress	5	0						
Complete	22	25						

**Strands at risk:** There are currently no strands at risk.

**Insight**

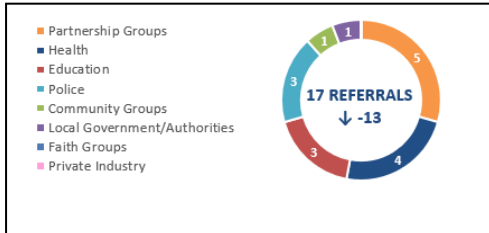
Extracted from CTLP Q1 2019/20 (ERSOU) (latest Force level data)



There were 17 referrals received in Q1 (13 referral decrease on the previous quarter). Essex recorded the lowest density of Prevent referrals across the Eastern region. While policing referrals are low in Essex it was the only force where 100% of referrals developed into managed cases which is a strong indicator of Prevent awareness across

referring agencies identifying those at risk of radicalisation and making appropriate referrals.

Analysis of referral by ideology and geography evidences the greatest risk presenting Far Right/Right Wing Terrorism (37%) with 'vulnerability present/no ideology identified' accounting for 30% of referrals. 23% of the referrals were generated from Colchester with the other referrals spread across the remaining 11 Districts.



Historically, Education facilities made up 60% of the referrals locally and therefore the closure of schools due to CoVid19 saw referrals across the region declined dramatically with lockdown. This raised a concern with potentially missed opportunities to identify those at risk of radicalisation, however, referrals from Q1 show

an increased number of referral sources particularly within the Health sector and from Partnership Groups. This suggests strong partnership awareness of indicators of radicalisation and an effective Channel process.

### **Delivery achieved previous quarter:**

The main activity across May and June 2020 (Q1) was in the following areas:

- Pan-Essex governance to ensure robust comms pathways, effectiveness & efficiencies which is already being realised, for example, alignment of training matrix;
- Adopting Prevent Champion CTPHQ Best Practice Guidance and increasing from 10 to 45 Prevent Champions through new recruitment process;
- Development of Training Matrix, securing resources to deliver and achieving agreement to align across SET Councils, all District Councils and Community Safety Partnerships to ensure consistency and overview of compliance rate;
- Development of training package relevant to Essex' Prevent profile;
- Development and delivery against internal and external Communication Strategy including Prevent webpage. This has enabled timely transmission of national and ERSOU proactive messaging in addition to community reassurance messaging in response to recent event such as Reading.

### **Delivery scheduled for current quarter:**

The main activity for Q2 has been in the following areas:

- Adoption of new ToR for Essex CONTEST Board which extends membership across Blue light Services, all relevant commands of EP and Chairs of SET Prevent Delivery Groups thereby strengthening the collective response to Prevent, enabling sharing of best practice/lessons to be learned and increasing efficiencies and effectiveness;
- Increase Prevent Champion to 61 with training to 20 internal candidates and progressing webinar format to extend to up to 30 external Safeguarding and Prevent Leads across partner agencies;
- Delivery of bespoke package to PSD in relation to Insider threat;
- Review of SET Prevent Delivery Groups & Channel Panels

**5.6 Hate Crime - Thematic Lead: D/Supt Scott Cannon**

**Delivery Plan progress dashboard:**

<b>Hate Crime Delivery Plan Progress</b>	2020/21				2021/22			
	Q1	Q2	Q3	Q4	Q1	Q2	Q3	Q4
Total strands	30	30						
Complete	15	15						
Ongoing / In progress	15	15						
At risk	0	0						

**Strands at risk:** There are currently no strands contained within the delivery plan at risk at this time. However, associated risks currently being managed in relation to hate crime are set out on the Force risk register and reported annually via the OPFCC Performance and Resources Scrutiny Panel. This risk relates to inconsistent hate crime investigations.

**Insight**

Extracted from the annual hate crime report provided to the OPFCC Performance and Resources Scrutiny Panel on 23<sup>rd</sup> June 2020

- There were 142 solved outcomes in the last 12 months to May 2020 a decrease of 16 compared to the 12 months to May 2019.
- The force case load for hate crime is 11.2% higher in the last 12 months to May 2020 increase of 305 compared to the 12 months to May 2019
- Essex Police has seen a 12.3 reduction in the number of non-crime hate incidents in the last 12 months to 2020 a decrease of 69 compared to the 12 months to May 2019
- Assaults without injury are the most prevalent type of hate crime accounting for 47% of all recorded hate crimes in the last 12 months to May 2020 and the previous 12 months to May 2019 (46.5%).
- ‘Other’ offences excluding Assaults, Public Order, and criminal damage are the least prevalent type of hate crime accounting for just 1.2% of all hate crimes in the last 12 months to May 2020 a reduction of 65 compared to the 12 months to May 2019.

The continued increased reporting of hate crime would tend to indicate that trust and confidence in the police is increasing and as part of the crime data accuracy programme of work, crimes are being more acutely recorded, and in a timely manner. Furthermore, the continued investment into the use of third-party reporting mechanisms such as Hate Incident Reporting Centres (HIRCS) and Hate Crime Ambassadors (HCAs) and collaboration with the Strategic Hate Crime Partnership has resulted in more victims coming forward to report hate crime, which is clearly a positive indicator. Events such as COVID-19 and the Black Lives Matter movement have not resulted in significant increases in hate crime reporting at this time. However, this may change over time.

**Delivery achieved previous quarter:**

The key activity across Q1 was in the following areas:

- Hate Crime priorities have been agreed with the Strategic Hate Crime partnership (SHCP) these are:
  - Prevention activity (including promoting restorative justice).
  - Targeting awareness and support to identified vulnerable groups.
  - Delivering education to young people
  - Raising awareness of hate crime and its connection with hate crime.
  - Exploring and tackling online hate crime.
- Southend Community Policing Team (CPT) developed an initiative called 'Operation Quartz' which consists of having dedicated ring – fenced hate crime investigators. This is providing an improved, more consistent approach to victims of hate crime, but is presenting challenges in terms of competing demands for service.
- A review process has been created which sees CPT inspectors now dip sampling hate crimes to ensure better objectivity, they are conducting reviews on teams other than their own.

**Delivery scheduled for current quarter:**

The Key activity across Q2 has been in the following areas:

- Continued monitoring of hate crime returns within force in order to identify the ongoing impacts of COVID-19.
- Preparation for National Hate Crime Awareness Week (11-19 October) will begin in September this will involve partners from the Strategic Hate Crime Board and certain departments within the force to produce a campaign.

**5.7 Digital Crime and Fraud - Thematic Lead: DCI Stuart Truss**

**Delivery Plan progress dashboard:**

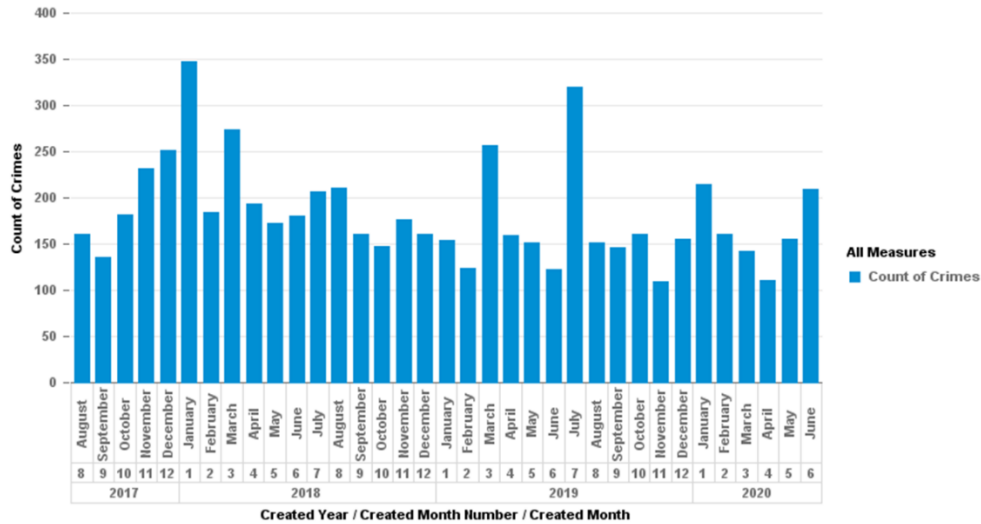
Digital Crime and Fraud Delivery Plan Progress	2020/21				2021/22			
	Q1	Q2	Q3	Q4	Q1	Q2	Q3	Q4
Total strands	48	48						
Complete	17	17						
Ongoing / In progress	31	31						
At risk	0	0						

**Strands at risk:** There are currently no strands contained within the delivery plan at risk at this time.

**Insight**

**Fraud Offences - 12 months to end of June 2020:**

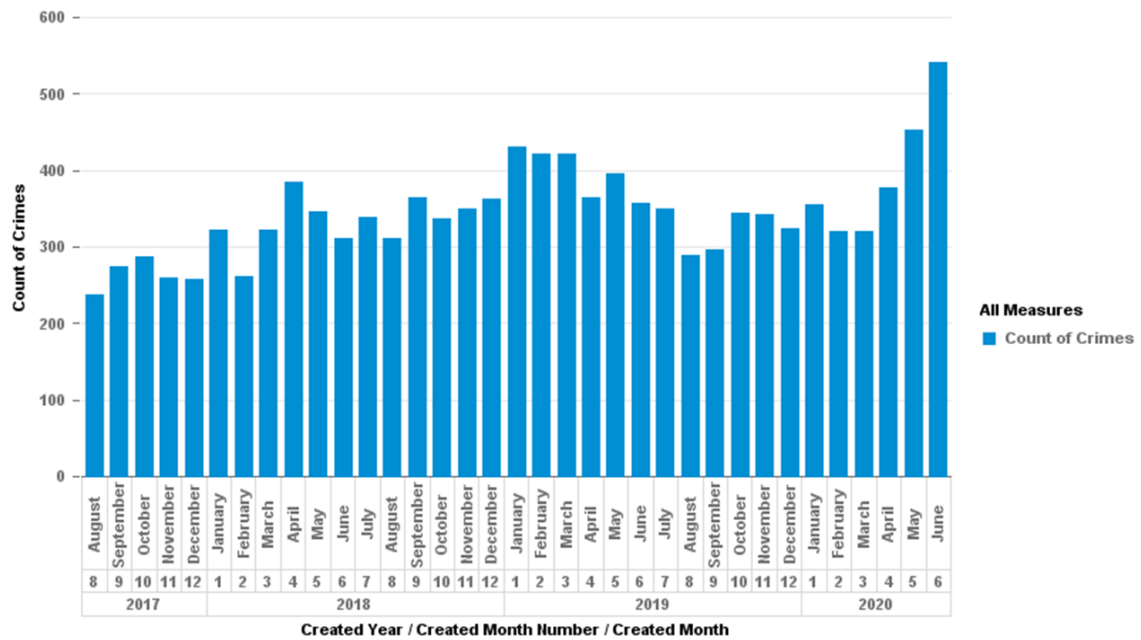
12m ending June 19	12m ending June 20	Diff.	% Diff.
2,031	2,035	4	+0.2%



**Cyber / Online Offences**

12 months to end of June 2020:

12m ending June 19	12m ending June 20	Diff.	% Diff.
4453	4315	-138	-3.1%



**Delivery achieved previous quarter:**

- Support of national courier fraud operation (Op Otello) during which offenders of this type of offence were targeted resulting in charges and convictions of several subjects in Essex.
- Working with Anglia Ruskin University to educate students around cyber risks, utilising cyber volunteers.
- Development of Banking Protocol 2, extending current processes to include telephone customers. Where there is a need for referral to Essex Police, the



relevant banking organisation send a notification to an e-mail address; this is picked up by the Fraud Co-ordinators and Fraud leads.

- Recruitment of Cyber and Fraud volunteers.
- Continued engagement with local businesses to minimise the risk of cyber-attack. Where new methods are identified, businesses are notified through a number of means – press releases, direct messaging etc.
- 7 suspects identified for diversion work – through notification from the NCA, potential offenders who have obtained cyber materials known for use in crime have been visited and cease and desist tactics used.

**Delivery scheduled for current quarter:**

- In line with national operation, Op Tonic, Essex Police will work with ERSOU on an intensification period relating to romance fraud. Both victims and offender’s resident in Essex will be identified and work carried out with both – victim in an attempt minimise the risk of ongoing or future offending; suspects with a view to cease and desist work, or enforcement where appropriate.
- Further development of Banking Protocol 2, embedding fully into force. Working with UK Finance, we will identify ways to improve this new process and ensure a speedy response to potential victims.
- Development of a fraud crime prevention leaflet (through the POCA fund) which will be circulated to supermarkets across Essex. In turn, these will be offered to shoppers, providing advice around how to prevent being a victim of fraud.
- Further development and training of fraud and cyber volunteers; utilising their skills to identify trends in offending so that Op Signature activity can be appropriately targeted.

**5.8 House Burglary and Street Robbery - Thematic Lead: C/Supt Simon Anslow**

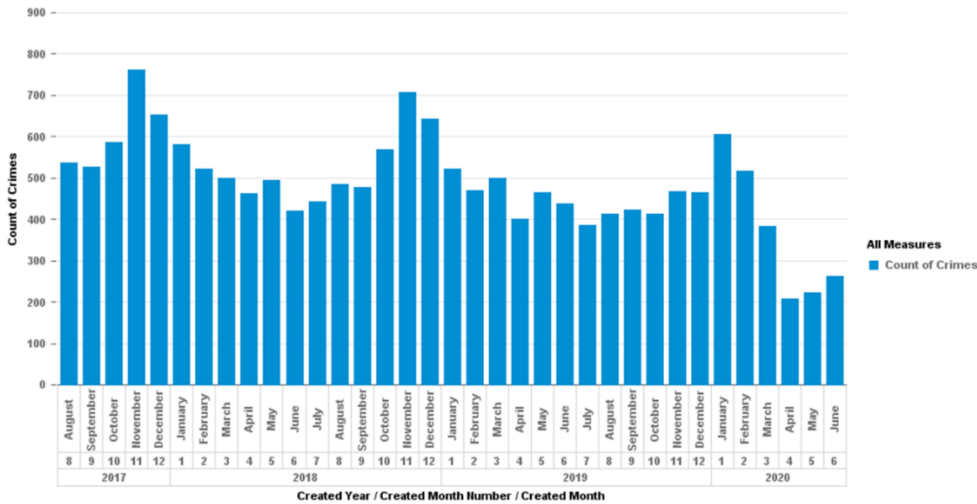
**Delivery Plan progress dashboard:**

This thematic strand does not have an existing delivery plan, something that will be rectified as part of the Crime Prevention Strategy refresh in the third quarter of this year.

**Insight**

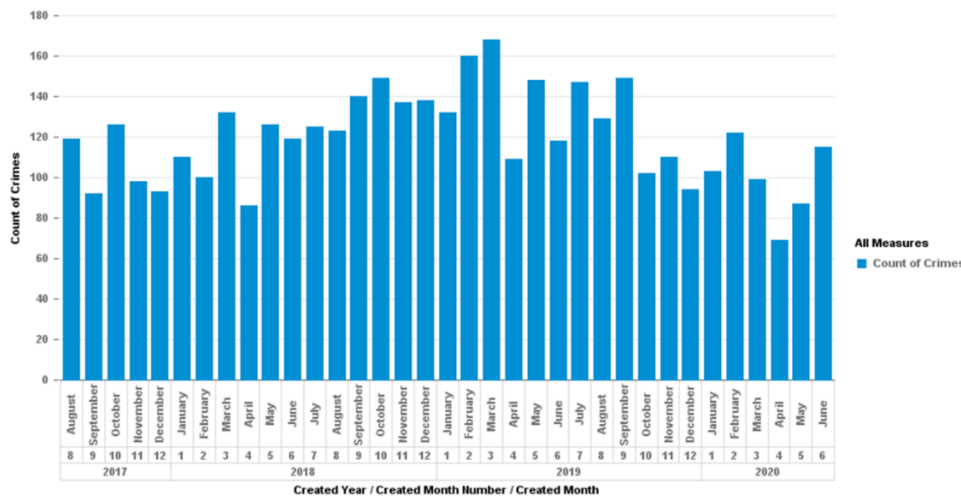
**Burglary (Dwelling) Offences 12 months to end of June 2020:**

12m ending June 19	12m ending June 20	Diff.	% Diff.
6116	4768	-1348	-22.0%



**Robbery (Personal) Offences** 12 months to end of June 2020:

12m ending June 19	12m ending June 20	Diff.	% Diff.
1647	1326	-321	-19.5%



**Strands at risk:** There are currently no strands at risk.

**Delivery achieved previous quarter:**

The main activity across Q1 was in the following areas:

- Operation Meteor – interim report agreed with ARU and published
- Terms of reference agreed for Residential Burglary investigative review, this is scheduled to start in September 2020 and will identify areas of victim care and investigation that can be improved, bringing more offenders to justice and subsequent reductions in offences. Early impacts anticipated in Q4 2020/21.
- LPA Detective Chief Inspectors tasked with consultation exercise on the strategy for this thematic area. This will be available in draft for consultation with partners in the next quarter live prior to the Crime Prevention Strategy launch in January 2021.

- Direction on overnight response to residential burglary incidents to ensure attendance at all reported incidents. This has had an immediate impact on attendance and remains part of ongoing daily reviews.

**Delivery scheduled for current quarter:**

The main activity for Q2 has been in the following areas:

- Crime Pattern Analysis to highlight street-level hotspots for seasonal dwelling burglary increases (due end September 2020)
- CPT-led prevention activity targeted at identified hotspots to mitigate seasonal spikes (delivery October-December 2020). Analysis in Q4 will assess the impact and learning for future application.
- Identification of repeat dwelling burglary locations over the last 3 years (due end September 2020) leading to LPSU-led interventions at these locations: site surveys; target hardening; problem-solving with CPTs (delivery October-December 2020)
- Review of existing house burglary and street robbery prevention strategy (due end September 2020)
- Appointment of a tactical lead for these thematic areas (by end September 2020)
- Development of tactical delivery plan for house burglary & street robbery (by December 2020)
- Op Meteor final report from Anglia Ruskin University (due December 2020)
- Inspection of LPA residential burglary investigations by the Audit & Inspector Team (due to commence September 2020)

**5.9 Serious and Organised Crime - Thematic Lead: D/Ch/Inspector Lee Morton**

**Delivery Plan progress dashboard:**

Serious and Organised Delivery Plan Progress	2020/21				2021/22			
	Q1	Q2	Q3	Q4	Q1	Q2	Q3	Q4
Total strands	17	17						
Complete	8	9						
Ongoing / In progress	9	8						
At risk	0	0						

**Strands at risk:** There are currently no strands at risk.

**Insight**

This quarter has been largely dominated by OP Venetic and the support given to this national pursue against high harm organised crime groups. We received a total of 32 packages into force, this however equates to 89 ENCRO handles and over 100 subjects. The results were:

- 35 Warrants, 29 Arrests, 23 charges, 17 suspects remanded, and 3 suspects sentenced totalling 47 years
- 174 KG Class A drugs and £2.1M cash seized
- 7 viable firearms recovered
- 1,161 un-harvested cannabis plants seized

- 21 people safeguarded, one of which was a child

**Delivery achieved previous quarter:**

- Safeguarding of 39 vulnerable trafficked victims and 9 suspects have also been charged and remanded.
- Essex Police SOC Partnership work with the Prevent and Protect Team includes working with schools, (for example working with schools identified as being used as recruiting grounds for county lines), letting organisations and councils (checking the conditions of homes being let, ensuring the correct number of beds), gang licence units, teams that check farm labourer working conditions, continued operations with ports and when required, pushing back to partners who are better placed to deal with identified offences.
- Embedded dedicated MSHT victim navigators, adopting best practice model which prevents future victim exploitation by early identification and signposting for support.
- Essex Police have enhanced the MSHT updates and training material on the internal website with links to mobile devices.
- Training packages are being delivered by the team to LPT officers on Flex training days.

**Delivery scheduled for current quarter:**

- Enhanced officer training in MSHT and Money Laundering, this can be achieved through the return of flex training days
- Enhancing the local SOC boards through the inclusion of SCPO briefings and the use of MoRile scoring to focus on the highest risk
- Work with Justice for care to increase safe house options
- Briefing with CPS to share challenges faced by police through CPS protocols for MSHT casework.

**6.0 Implications (Issues)**

There are no implications anticipated.

**6.1 Links to Police and Crime Plan Priorities**

The thematic strands deliver against the priorities identified within the PCC Plan.

**6.2 Demand**

This report utilises the demand modelling.

**6.3 Risks/Mitigation**

No risks identified.

**6.4 Equality and/or Human Rights Implications**

Summarise any identified impact on equality, diversity or human rights.

#### **6.5 Health and Safety Implications**

No Health and Safety Risks identified.

#### **7.0 Consultation/Engagement**

Thematic leads have all contributed to the report.

#### **8.0 Actions for Improvement**

There are no outstanding HMICFRS improvement plans or Areas for Improvement (AFIs) relating to the Crime Prevention Strategy.

#### **9.0 Future Work/Development and Expected Outcome**

As described under section 4.0 Crime Prevention Strategy 2021-24 progress: Next steps.