

Police and Crime Plan 2016-2021

Monthly Performance Update

June 2020

National and MSG positions are to 30th April 2020 (Essex Police data are to 30th June 2020).



Version 1.3
Produced July 2020
Performance Analysis Unit, Essex Police
Sensitivity: Official

Executive Summary

- **Four of the seven PFCC Priorities** for Essex Police have been given a recommended grade of '**Good**'. Recommended grades have been determined with reference to comparisons with Essex Police's Most Similar Group (MSG) of forces, internal Key Performance Indicators (KPIs), and professional judgement.
- **Three of the seven PFCC priorities** – 1 (More local, visible and accessible policing), 3 (Breaking the cycle of domestic abuse) and 4 (Tackling gangs and serious violence) – have been given a recommended grade of '**Requires Improvement**'.
- **All Crime fell** by 1.8% for the 12 months to June 2020 compared to the 12 months to June 2019. This equates to 2,983 fewer offences. Essex Police recorded 211 fewer offences in the month of June 2020 compared to June 2019; this equates to a 1.6% reduction.
- **The number of crimes recorded by Essex Police has reduced since the introduction of the Government's restrictions on gathering and movement in relation to COVID-19 were introduced** compared to the period of no intervention. **25.1% fewer offences were recorded when the full restrictions were in place** (24 March 2020 to 12 May compared to the same period in 2019); this equates to around 118 fewer offences per day. By contrast, **10.0% fewer offences have been recorded since the restrictions have been eased** (13 May 2020 to 30 June 2020 inclusive compared to the same period in 2019); this equates to around 47 fewer offences per day. Each change in the rules relating to social distancing has affected the number of All Crime offences reported to Essex Police.*
- The number of **anti-social behaviour incidents increased by 31.2% in June 2020** compared to June 2019 (1,193 more incidents). This is due to the Government's social distancing restrictions that were implemented on 23 March 2020; many reports relate to activities that were previously not considered to be anti-social behaviour, for example social gatherings, as well as shops and businesses continuing to trade.
- Confidence (Essex Police internal survey) is at 65.6% (results to the 12 months to March 2020). Compared to year ending March 2019, confidence in the local police decreased (deterioration of 1.1% points). Confidence in the local police from the Crime Survey of England and Wales (CSEW) places Essex eighth in its MSG, and 8.7% points below the MSG average.
- Due to the Government's social distancing restrictions that were implemented on 23 March 2020, statistically significant changes were experienced for a high number of offence types in the month of June 2020.**

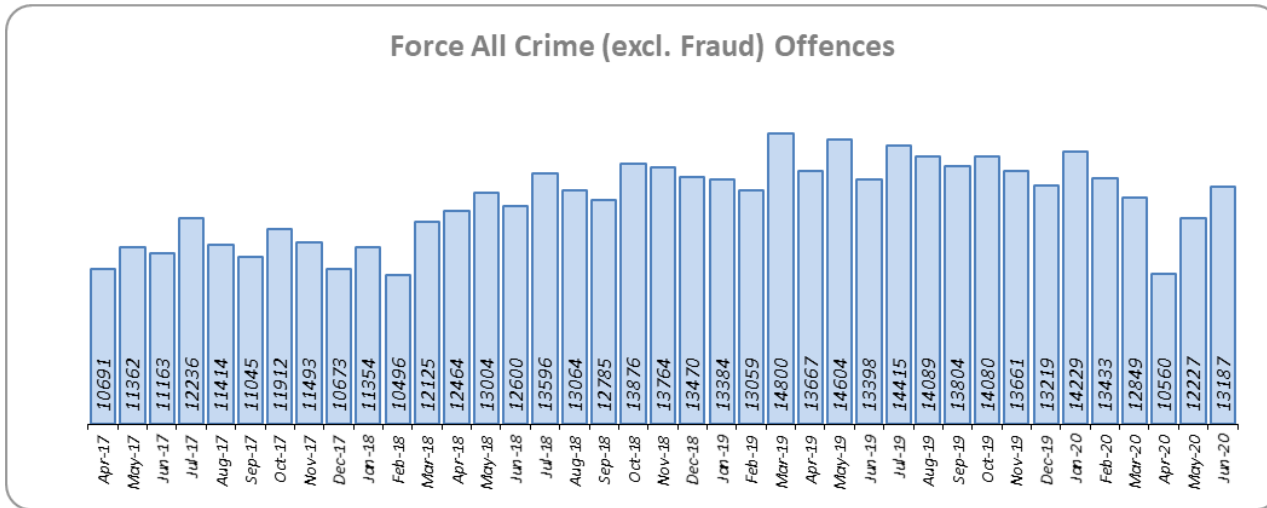
* Please see table showing the affect of social distancing measures on page 14.

** Please see additional notes on pages 12 and 13.

Priority 1 - More local, visible and accessible policing

Grade: **Requires Improvement**

Police Priority Indicators	12 months to June 2019	12 months to June 2020	Number Difference	% Difference	Essex per 1,000 pop.	MSG Ave per 1,000 pop.	# diff.	Essex MSG Position
Number of all crime offences	163,005	160,022	-2,983	-1.8	90.3	78.2	12.2	8



Essex experienced a 1.8% decrease in All Crime (2,983 fewer offences) for the 12 months to June 2020 compared to the 12 months to June 2019. Essex is eighth in its Most Similar Group of forces (MSG) for crime per 1,000 population.

The number of crimes recorded daily by Essex Police has reduced since the introduction of the Government’s restrictions on gathering and movement in relation to COVID-19, compared to the period of no intervention. A breakdown showing the affect of these changes can be seen on page 14.

Essex was graded as Outstanding in its recent HMICFRS Crime Data Integrity (CDI) inspection. Essex Police is only the third force of the 41 that have been inspected judged as outstanding on the first visit in this inspection programme.

Priority 1 - More local, visible and accessible policing

Grade: **Requires Improvement**

Police Priority Indicators	12 months to Mar 2019	12 months to Mar 2020	% pt. Difference	% Difference
Percentage of people who have confidence in policing in Essex (internal survey)	66.7	65.6	-1.1	-
<i>Confidence Interval</i>	1.1	1.1		

Police Priority Indicators	12 months to Dec 2018	12 months to Dec 2019	Number Difference	% Difference	Essex	MSG Ave	# diff.	Essex MSG Position
Confidence in the local police (Crime Survey of England and Wales)	48.1	46.6	-1.5	-	46.6	55.3	-8.7	8
<i>Confidence Interval</i>	4.2	4.2			4.2	1.7		

Police Priority Indicators	12 months to June 2019	12 months to June 2020	Number Difference	% Difference	Essex	MSG Ave	# diff.	Essex MSG Position
Harm (Crime Severity) Score* v. Most Similar Group of Forces (MSG) - All Crime	-	13.6	-	-	13.6	11.7	1.9	8
Emergency response attendance within 15 mins (urban) or 20 mins (rural) (GOS %)**	72.4	75.6	3.2	-				

Confidence (Essex Police internal survey) is at 65.6% (results to the 12 months to March 2020). Compared to year ending March 2019, confidence in the local police has decreased (deterioration of 1.1% points). Confidence in the local police from the Crime Survey of England and Wales (CSEW) places Essex eighth in its MSG, and 8.7% points below the Most Similar Group of Forces (MSG) average. However, the sample size from this survey is not representative at a sufficiently small scale to measure local level results. The Essex Police internal survey (results detailed above) was therefore introduced to achieve a more accurate local measure with only a small margin of error. The results from the Essex Police survey show that the Force performs significantly better on confidence in local policing than the results from the CSEW, which asks the same question.

The All Crime Harm (Crime Severity) Score* (13.6) places Essex eighth (last) in its MSG.

Essex Police performance in relation to emergency response attendance within 15 minutes (urban) or 20 minutes (rural) remains below the 80% target for the 12 months to June 2020. However, performance improved by 3.2 percentage points when compared to the 12 months to June 2019.

Due to the fact that Essex is 8th in its MSG for all comparable metrics, that the emergency response grade of service remains below target, and that Essex Police internal survey shows a deterioration in confidence in local police, a grade of Requires Improvement is recommended.

Please note:

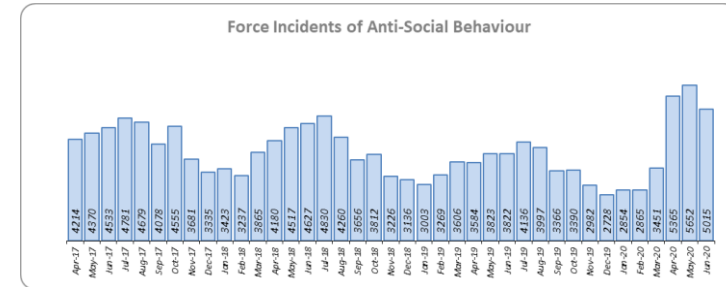
* Crime Severity Scores (as calculated by the Office for National Statistics) measure the 'relative harm' of crimes by taking into account both their volume and their severity. Data are for the 12 months to April 2020.

** Grade of Service.

Priority 2 - Crack down on anti-social behaviour

Grade: **Good**

Police Priority Indicators	12 months to June 2019	12 months to June 2020	Number Difference	% Difference
Number of anti-social behaviour incidents	44,325	45,988	1,663	3.8



Police Priority Indicators	12 months to Dec 2018	12 months to Dec 2019	Number Difference	% Difference	Essex	MSG Ave	# diff.	Essex MSG Position
ASB Perception:- Perception that ASB is a problem (CSEW)	6.1	3.1	-3.0	-	3.1	4.9	-1.8	2
<i>Confidence Interval</i>	4.4	2.5			2.5	1.4		

Police Priority Indicators	12 months to Mar 2019	12 months to Mar 2020	% pt. Difference	% Difference
Percentage of people who have confidence Essex Police and the organisations they work with are dealing with ASB (internal survey)	64.5	66.3	1.8	-
<i>Confidence Interval</i>	1.1	1.1		

Essex experienced a 3.8% increase (1,663 more) in Anti-Social Behaviour (ASB) incidents for the 12 months to June 2020 compared to the 12 months to June 2019. ASB increased by 31.2% in June 2020 compared to June 2019 (1,193 more incidents): this is due to the Government's social distancing restrictions that were implemented on 23 March 2020 (many of these additional reports relate to activities that were previously not considered to be ASB, for example social gatherings, as well as shops and businesses continuing to trade).

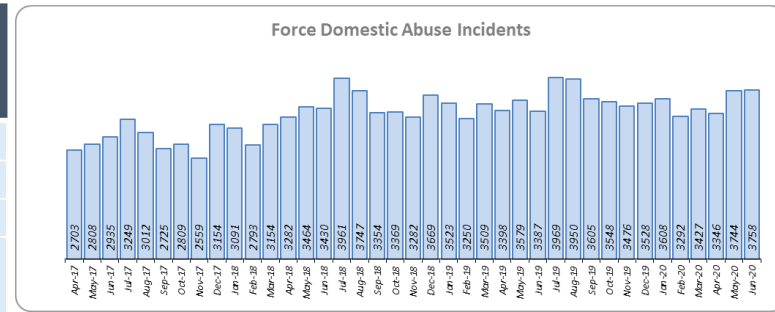
ASB Perception (from the Crime Survey of England and Wales) in Essex experienced a 3.0% point decrease (improvement). Essex is 1.8% points better than the MSG average; this places Essex second in its Most Similar Group of forces. The results of Essex's internal survey in relation to how well residents perceive Essex Police and partner organisations to be dealing with ASB showed an improvement of 1.8% points.

Due to the fact that ASB Perception is better than the MSG average, a grade of Good is recommended.

Priority 3 - Breaking the cycle of domestic abuse

Grade: **Requires Improvement**

Police Priority Indicators	12 months to June 2019	12 months to June 2020	Number Difference	% Difference
Number of incidents of domestic abuse	42,028	43,251	1,223	2.9
Number of repeat incidents of domestic abuse	19,434	20,780	1,346	6.9
Number of domestic abuse arrests	11,921	13,023	1,102	9.2
Number of Domestic Violence Protection Notices (DVPNs) and Protection Orders (DVPOs)	174	213	39	22.4



Police Priority Indicators	12 months to June 2019	12 months to June 2020	Number Difference	% Difference
Total domestic abuse offences solved	3,221	3,315	94	2.9
High Risk domestic abuse offences solved	811	725	-86	-10.6
Medium Risk domestic abuse offences solved	1,039	996	-43	-4.1
Standard Risk domestic abuse offences solved	1,167	1,409	242	20.7

Essex experienced a 2.9% increase (1,223 more) in Domestic Abuse incidents and a 6.9% increase (1,346 more) in repeat incidents of Domestic Abuse for the 12 months to June 2020 compared to the 12 months to June 2019. However, there was a 9.2% increase (1,102 more) in Domestic Abuse arrests and a 22.4% increase (39 more) in Domestic Violence Protection Notices (DVPN) and Protection Orders (DVPO) in the 12 months to June 2020 compared to the 12 months to June 2019.

There was a 2.9% increase (94 more) in the number of solved Domestic Abuse outcomes in the 12 months to June 2020 compared to the 12 months to June 2019.

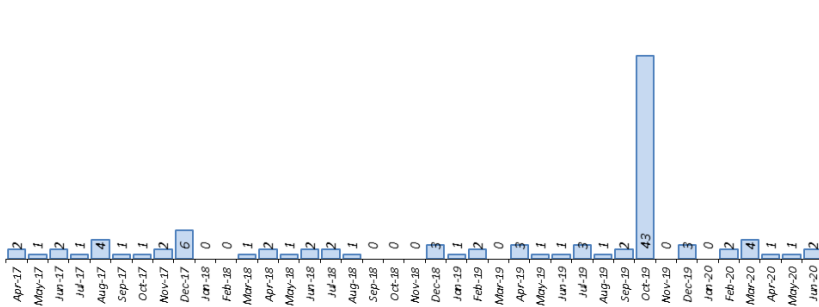
Due to the increase in repeat incidents and the decrease in the High and Medium Risk solved volume, a grade of Requires Improvement is recommended.

Priority 4 – Tackling gangs and serious violence

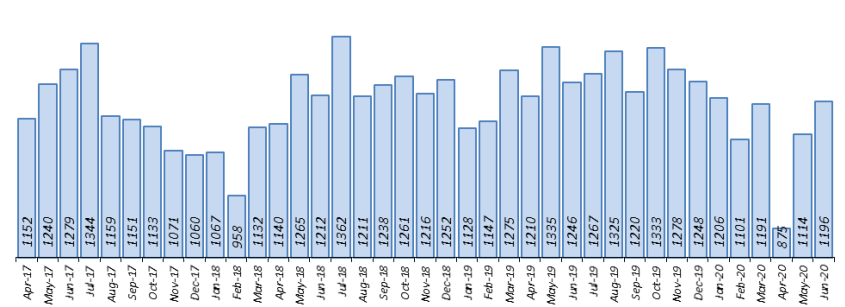
Grade: **Requires Improvement**

Police Priority Indicators	12 months to June 2019	12 months to June 2020	Number Difference	% Difference	Essex per 1,000 pop.	MSG Ave per 1,000 pop.	# diff.	Essex MSG Position
Number of homicides	14	61	47	335.7	0.034	0.013	0.021	8
Number of violence with injury offences (new definition from Nov 2017)	14,961	14,500	-461	-3.1	8.242	8.377	-0.135	5

Force Homicide Offences



Force Violence with Injury Offences



Essex saw an increase of 47 Homicides (to 61 offences) for the 12 months to June 2020 compared to the 12 months to June 2019. This includes the tragic incident where 39 Vietnamese nationals were discovered in a lorry trailer in Grays in October 2019. Essex is eighth in its Most Similar Group (MSG) of forces for offences per 1,000 population, and is higher than the MSG average.

There was a 3.1% decrease (461 fewer offences) in Violence with Injury. Essex is fifth in its MSG for offences per 1,000 population, and is slightly better than the MSG average. Despite this decrease there is a rise in domestic abuse related Violence with Injury (11.8% increase, 597 more offences); 39.0% of Violence with Injury is domestic abuse-related.

Priority 4 – Tackling gangs and serious violence

Grade: **Requires Improvement**

Police Priority Indicators	12 months to June 2019	12 months to June 2020	Number Difference	% Difference	Essex	MSG Ave	# diff.	Essex MSG Position
Harm (Crime Severity) Score* v. Most Similar Group of Forces (MSG) for Violence with Injury, Rape, Other Sexual Offences and Robbery of Personal Property	-	8.0	-	-	8.0	6.9	1.1	8
Number of Violence with Injury, Rape, Other Sexual Offences and Robbery of Personal Property solved	3,094	2,882	-212	-6.9				
Stop and search for weapons	1,760	3,550	1,790	101.7				
Knife-enabled crime**	831	1,277	446	53.7				

The combined harm (Crime Severity) score* (8.0) for Violence with Injury, Rape, Other Sexual Offences and Robbery of Personal Property places Essex eighth in its Most Similar Group of Forces (MSG).

There was a 6.9% decrease (212 fewer) in the number of solved Violence with Injury, Rape, Other Sexual Offences and Robbery of Personal Property offences in the 12 months to June 2020 compared to the 12 months to June 2019. This is being driven by a decrease in the numbers of Violence with Injury investigations that were solved (see page 18 for the numbers of solved for each category).

There was a 101.7% increase (1,790 more) in the number of stop and search for weapons in the 12 months to June 2020 compared to the 12 months to June 2019. This is a result of both increased police proactivity and improvements in technology.

There was a 53.7% increase (446 more) in the number of Knife-enabled crime offences in the 12 months to June 2020** compared to the 12 months to June 2019.

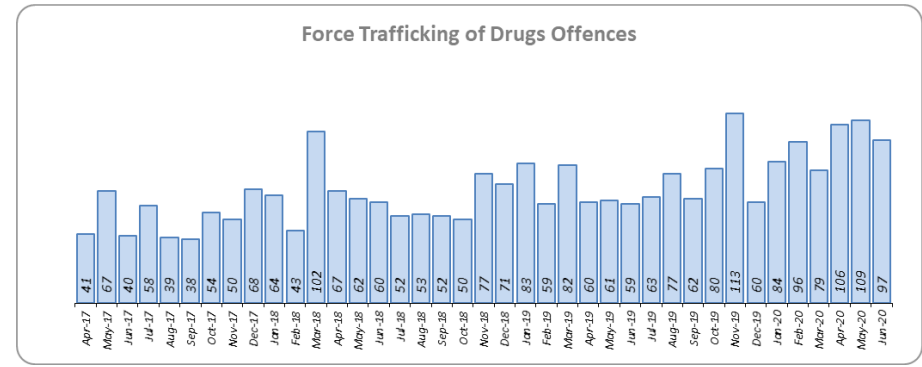
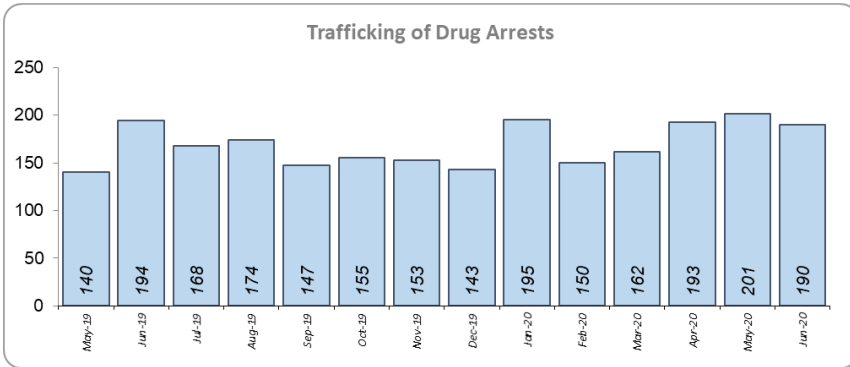
Due to the fact that Essex is above the MSG average for high harm offences, and the number of solved Violence with Injury offences has decreased, a grade of Requires Improvement is recommended.

Please note:

* Crime Severity Scores (as calculated by the Office for National Statistics) measure the 'relative harm' of crimes by taking into account both their volume and their severity. Data are for the 12 months to April.

** The number of knife crime offences is an indicator of how effective Essex Police is at identifying knife-enabled offences, and is not necessarily reflective of the number of these offences that have been committed in the county. This is because the identification of these offences is reliant on the appropriate indicator being manually added to the crime record. A manual review of knife flags was conducted and missing flags were added retrospectively. Additionally a new data quality process was introduced in June 2020. Whilst this has enabled us to better understand knife crime in Essex, the process has consequently inflated the figures. As such, no inferences can be drawn as to the current trend.

Police Priority Indicators	12 months to June 2019	12 months to June 2020	Number Difference	% Difference
Number of Organised Criminal Group disruptions*	42	62	20	47.6
Trafficking of drugs arrests	1,613	1,962	349	21.6



62 Organised Crime Group (OCG) disruptions were conducted in Essex in January to June 2020* inclusive compared with 42 in the same months in 2019 (20 more). In January 2019 there was a change in the way in which the number of OCG disruptions were counted; this follows National Crime Agency (NCA) and Eastern Region Special Operations Unit (ERSOU) guidance to ensure that all forces record disruptions in the same way. Year-on-year comparisons can only therefore be made from January 2020.

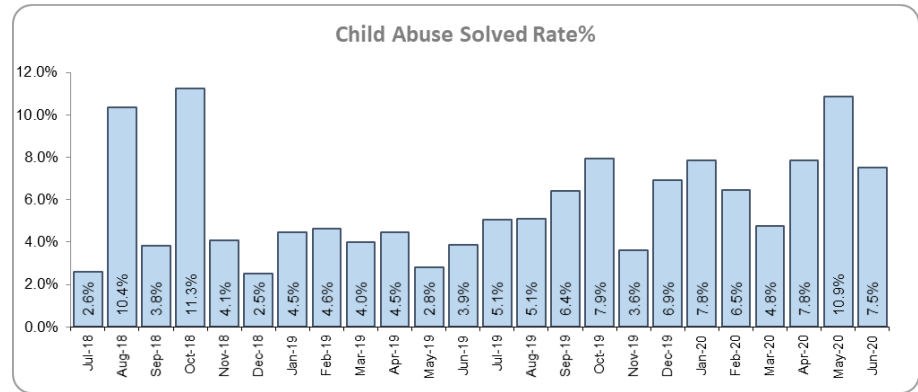
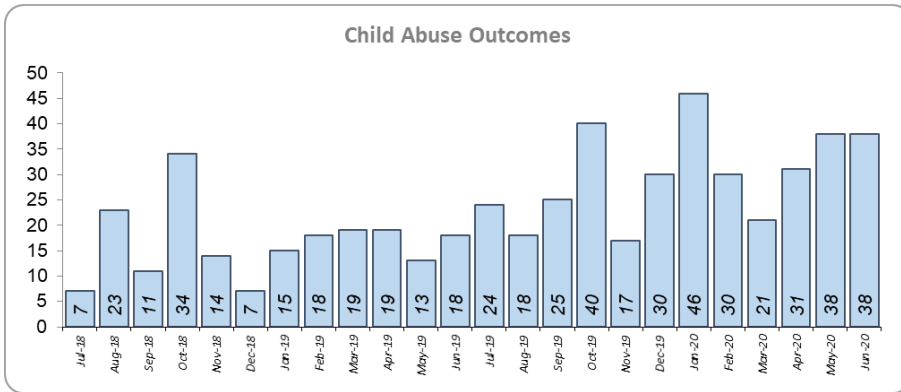
Trafficking of drug arrests, which are also as a result of police proactivity, increased by 21.6% (349 more) for the 12 months to June 2020 compared to the 12 months to June 2019. In the same period, 37.2% more trafficking of drugs offences have been recorded (284 more offences to 1,047).

Due to the increase in OCG disruptions and Trafficking of Drug Arrests, a grade of Good is recommended.

Please note:

* the number of Organised Crime Group disruptions are a comparison of January to June 2019 and January to June 2020, as there was a change in the method by which these disruptions were counted from January 2019.

Police Priority Indicators	12 months to June 2019	12 months to June 2020	Number Difference	% Difference
Number of child abuse outcomes	209	373	164	78.5
Child abuse solved rate	4.9	6.9	2.0	-
Child Sexual Abuse/Exploitation investigations	2,098	1,967	-131	-6.2
Modern Slavery referrals made to the National Referral Model (NRM)*	26	24	-2	-7.7



Although there was a 6.2% decrease (131 fewer) in the number of Child Sexual Abuse/Exploitation investigations in the 12 months to June 2020 compared to the 12 months to June 2019 there was a 78.5% increase (164 more) in the number of solved Child Abuse Outcomes in the 12 months to June 2020 compared to the 12 months to June 2019.

25.9% more Child Abuse offences (an additional 1,111) were recorded in the 12 months to June 2020 compared to the 12 months to June 2019. There was a 2.0% point increase in the solved rate (from 4.9% to 6.9%).

24 Modern Slavery referrals were made in April to June 2020* compared with 26 in the same months in 2019 (2 fewer). In April 2019 there was a change in the way in which the number of Modern Slavery referrals were recorded.

As the number of Child Abuse investigations solved each month has been consistently higher than the volumes recorded in the same month the previous year (since September 2019), a grade of Good is recommended.

*The number of Modern Slavery referrals made to the National Referral Model are a comparison of April to June 2019 and April to June 2020, due to a change in the method of recording in April 2019.

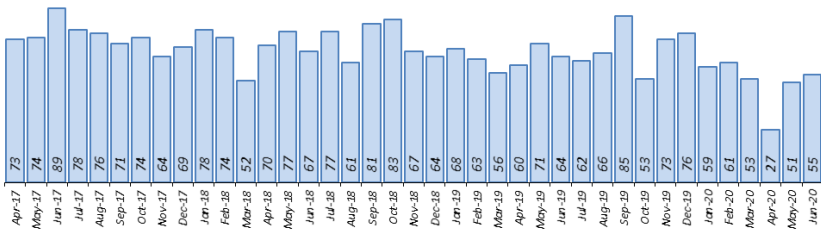
Priority 7 - Improve safety on our roads

Grade: **Good**

Police Priority Indicators	12 months to June 2019	12 months to June 2020	Number Difference	% Difference
All people killed or seriously injured (KSI) in road collisions	885	804	-81	-9.2
Number of driving related mobile phone crime on Essex roads	2,455	878	-1,577	-64.2
Number of driving under the influence of drink and/or drugs on Essex roads	3,326	4,075	749	22.5
<i>Number of driving under the influence of drink on Essex roads</i>	1,409	1,419	10	0.7
<i>Number of driving under the influence of drugs on Essex roads</i>	1,540	2,213	673	43.7
<i>Number of Failure to Provide samples</i>	377	443	66	17.5

Essex (per 100 million km) Data to June 2019	MSG Ave (per 100 million km) Data to June 2019	# diff.	Essex MSG Position
1.171	1.120	0.051	5

Force People Killed or Seriously Injured in Road Collisions (KSIs)



Rolling 12 months	12m to Jun 19	12m to Jun 20	Number Diff	% Diff
KSI - All	885	804	-81	-9.2%
KSI - Fatalities	46	46	0	0.0%
KSI - Serious injuries	839	758	-81	-9.7%
Number of Collisions	829	747	-82	-9.9%

There was an 9.2% decrease (81 fewer) in the numbers of those Killed or Seriously Injured (KSI) in Essex for the 12 months to June 2020 compared to the 12 months to June 2019. Please note that most KSIs do not result in criminal offences (such as death or serious injury caused by dangerous driving) being recorded. Essex is placed fifth in its Most Similar Group (MSG) of forces for casualties per 100 million vehicle kilometres (results to June 2019).

There has been a 64.2% decrease in mobile phone crime (1,577 fewer offences) but a 22.5% increase (749 more offences) in drink/drug driving. Both metrics are a measure of police proactivity in relation to road safety.

As of June 2019, Essex was slightly worse than the MSG average per 100 million km. However, due to the fact that more recent national figures have not been released, the current position cannot be determined (the date of the next national release has not yet been confirmed). Due to the decrease in KSIs by almost 10% in the past 12 months, however, a grade of Good is recommended.

Monthly Performance Overview: Exceptions

Exceptions Overview

Due to the government lockdown and social distancing restrictions that were implemented on 23 March 2020 the following offence types experienced statistically significant changes for the month of June 2020.

Other Sexual Offences – Increase

0.1% increase (2 more offences) for the 12 months to June 2020 compared to the 12 months to June 2019. There were statistically exceptional increases in two Districts in June 2020.

Burglary Business and Community – Decrease

28.5% decrease (956 fewer offences) for the 12 months to June 2020 compared to the 12 months to June 2019. There was a statistically exceptional decrease in one District in June 2020.

Theft from a Vehicle – Decrease

13.5% decrease (1,046 fewer offences) for the 12 months to June 2020 compared to the 12 months to June 2019. The Force saw a statistically exceptional decrease in June 2020.

Theft of a Vehicle – Decrease

20.1% decrease (1,118 fewer offences) for the 12 months to June 2020 compared to the 12 months to June 2019. There were statistically exceptional decreases in three Districts in June 2020.

Vehicle Interference – Decrease

12.0% decrease (263 fewer offences) for the 12 months to June 2020 compared to the 12 months to June 2019. The Force saw a statistically exceptional decrease in June 2020.

Theft from the Person – Decrease

18.2% decrease (252 fewer offences) for the 12 months to June 2020 compared to the 12 months to June 2019. There were statistically exceptional decreases in two Districts in June 2020.

Monthly Performance Overview: Exceptions (continued)

Shoplifting – Decrease

18.8% decrease (2,080 fewer offences) for the 12 months to June 2020 compared to the 12 months to June 2019. There were statistically exceptional decreases in three Districts and Stansted Airport in June 2020.

Racial/Religiously Aggravated Offences – Increase

8.9% increase (133 more offences) for the 12 months to June 2020 compared to the 12 months to June 2019. There were statistically exceptional increases in three Districts in June 2020.

Hate Crime HO Definition – Increase

11.0% increase (308 more offences) for the 12 months to June 2020 compared to the 12 months to June 2019. The Force saw a statistically exceptional increase in June 2020.

Possession of Drugs – Increase

54.0% increase (2,070 more offences) for the 12 months to June 2020 compared to the 12 months to June 2019. There were statistically exceptional increases in three Districts in June 2020. **These offences are a measure of police proactivity.**

Public Order – Increase

10.4% increase (1,454 more offences) for the 12 months to June 2020 compared to the 12 months to June 2019. There were statistically exceptional increases in four Districts in June 2020.

Monthly Performance Overview: Of Note

COVID-19: Restrictions of movement and social distancing

Since 13 March 2020, the Government implemented a series of alert levels and steps regarding the level of social distancing allowed in relation to COVID-19. Each change has affected the number of All Crime offences recorded.

Date Period	Level	Step	Restrictions	Number of days	Daily Average
01/07/2019 - 12/03/2020			No government restrictions	256	456
13/03/2020 - 23/03/2020		Recommended social distancing	<ul style="list-style-type: none"> • Introduction of self-isolation measures should COVID-19 symptoms be suspected • Only essential travel and socialising recommended 	11	430
24/03/2020 - 12/05/2020	Level 4	Compulsory lockdown	<ul style="list-style-type: none"> • Work from home if you can • Allowed to leave home for essential shopping or medical needs only • Only one hour of exercise outdoors allowed per day 	50	351
13/05/2020 - 31/05/2020	Level 4	Step 1	<ul style="list-style-type: none"> • Work from home if you can - but if you can't, you may be able to return to your workplace • Unlimited exercise outdoors • Meet one friend or family member outdoors - but stay two metres apart 	19	411
01/06/2020 - 12/06/2020	Level 4	Step 1	<ul style="list-style-type: none"> • Schools reopen for all pupils in Reception and Years 1 and 6 • Re-opening of car showrooms and outdoor markets • May meet up to 6 people from other households outdoors, including back gardens - but stay two metres apart 	12	421
13/06/2020 - 14/06/2020	Level 4	Step 1	<ul style="list-style-type: none"> • Single adult households, including those with children under 18, can form a 'support bubble' with one other household • Places of worship (for private prayer only) reopen 	3	423
15/06/2020 - 30/06/2020	Level 4 Level 3*	Step 2	<ul style="list-style-type: none"> • Non essential retail shops reopened • Zoos, safari parks and drive-through cinemas reopened • Years 10 and 12 return to school 	15	457

* The alert level was reduced to Level 3 on 18th June 2020 but no restrictions were changed on this date.

Essex Police Cyber Crime Unit (CCU) named top in country

In June 2020 the City of London Police published their annual data on cyber and fraud, which highlighted that the Essex Police Cyber Crime Unit (CCU) was the most successful of all police forces. 56% of all charges for cybercrime offences in the UK were gained by Essex Police's CCU, and two of its officers were recognised for their work at the National Police Chiefs' Council Cyber Awards. At the same time, the Unit have been working on a number of prevention initiatives to support people to protect themselves against online fraud and crime.

2016-2021 Police and Crime Plan Performance Indicators

Table 1

Police and Crime Plan Priorities	Police Priority Indicators	12 months to June 2019	12 months to June 2020	Number Difference	% Difference	Direction of Travel
Priority 1 - More local, visible and accessible policing	Percentage of people who have confidence in policing in Essex (internal survey) ¹	66.7	65.6	-1.1	-	Stable
	<i>Confidence Interval</i> ²	1.1	1.1			
	Confidence in the local police (CSEW) ³	48.1	46.6	-1.5	-	Stable
	<i>Confidence Interval</i> ²	4.2	4.2			
	Number of all crime offences	163,005	160,022	-2,983	-1.8	Improving
	Harm (Crime Severity) Score - All Crime ⁹	-	13.6	-	-	-
Priority 2 - Crack down on anti-social behaviour	Emergency response attendance within 15 minutes (urban) or 20 minutes (rural)	72.4	75.6	3.2	-	Improving
	Number of anti-social behaviour incidents	44,325	45,988	1,663	3.8	Deteriorating
	Percentage of people who have confidence that the policing response to ASB is improving (internal survey) ⁴	64.5	66.3	1.8	-	Stable
	<i>Confidence Interval</i> ²	1.1	1.1			
Priority 3 - Breaking the cycle of domestic abuse	Number of incidents of domestic abuse	42,028	43,251	1,223	2.9	Deteriorating
	Number of repeat incidents of domestic abuse	19,434	20,780	1,346	6.9	Deteriorating
	Number of domestic abuse arrests	11,921	13,023	1,102	9.2	Improving
	Number of Domestic Violence Protection Notices (DVPNs) and Protection Orders (DVPOs)	174	213	39	22.4	Improving
	Number of domestic abuse offences solved	3221	3315	94	2.9	Improving
Priority 4 - Tackling gangs and serious violence	Number of homicides ⁸	14	61	47	335.7	Deteriorating
	Number of violence with injury offences (new definition from Nov 2017)	14,961	14,500	-461	-3.1	Improving
	Harm (Crime Severity) Score for Violence with Injury, Rape, Other Sexual Offences and Robbery of Personal Property ⁹	-	8.0	-	-	-
	Number of Violence with Injury, Rape, Other Sexual and Robbery of Personal Property Offences solved	3,094	2,882	-212	-6.9	Deteriorating
	Stop and search for weapons	1,760	3,550	1,790	101.7	Improving
	Knife-enabled crime ¹⁰	831	1,277	446	53.7	Deteriorating
Priority 5 - Disrupting and preventing organised crime	Number of Organised Criminal Group disruptions ⁵	42	62	20	47.6	Improving
	Trafficking of drugs arrests	1,613	1,962	349	21.6	Improving
Priority 6 - Protecting children & vulnerable people	Number of child abuse outcomes ⁶	209	373	164	78.5	Improving
	Child abuse solved rate	4.9	6.9	2.0	-	Improving
	Child Sexual Abuse/Exploitation investigations	2,098	1,967	-131	-6.2	-
	Modern Slavery referrals made to the National Referral Model (NRM) ¹¹	26	24	-2	-7.7	Deteriorating
Priority 7 - Improve safety on our roads	Number of driving related mobile phone crime on Essex roads	2,455	878	-1,577	-64.2	Improving
	Number of driving under the influence of drink and/or drugs on Essex roads	3,326	4,075	749	22.5	Deteriorating
	All people killed or seriously injured (KSI) in road collisions ⁷	885	804	-81	-9.2	Improving

Please note:

- The number of Organised Crime Group disruptions are a comparison of January to June 2019 and January to June 2020, as there was a change in the method by which these disruptions were counted from January 2019.
- The number of Modern Slavery referrals made to the National Referral Model are a comparison of April to June 2019 and April to June 2020, due to a change in the method of recording in April 2019.

[Please view above table with the explanations and caveats detailed on pages 16 and 17.](#)

End Notes

¹ Question from Essex Police's own confidence and perception survey (Question 13b). Results are for the period 12 months March 2020 versus the 12 months to March 2019.

² The confidence interval is the range +/- between where the survey result may lie. This is mainly influenced by the number of people answering the survey. The more people that answer the survey, the smaller the interval range.

³ Crime Survey for England and Wales (CSEW): 12 months to December 2019 vs. 12 months to December 2018.

⁴ Question from Essex Police's own confidence and perception survey (Question 8a). Results are for the period 12 months to March 2020 versus the 12 months to March 2019.

⁵ Please note that the number of Organised Crime Group disruptions are a comparison of January to June 2019 and January to June 2020 only due to a change in counting rules that occurred in January 2019. From January 2019, activity has been recorded rather than the number of people arrested. If there was a day of action, for example, and five people were arrested, this would formerly have counted as five disruptions, but now will count as one. The change stems from confusion over the previous guidelines, with police forces counting disruptions in different ways.

⁶ Solved outcomes are crimes that result in: charge or summons, caution, crimes taken into consideration, fixed penalty notice, cannabis warning or community resolution.

⁷ 'Killed or Seriously Injured' (KSI) refers to all people killed or seriously injured on Essex's roads, regardless of whether any criminal offences were committed. 'Causing Death/Serious Injury by Dangerous/Inconsiderate Driving' offences (detailed on p.11) refers to the number of crimes of this type.

⁸ Please note that on Wednesday 23 October 2019 the bodies of 39 Vietnamese nationals were discovered in a lorry trailer in Grays. This tragic incident is reflected in the Homicide numbers.

⁹ Crime Severity Score measures 'relative harm' of crimes by taking into account both the volume and the severity of offences, and by weighting offences differently. Data are for the 12 months to April 2020.

End Notes (Continued)

¹⁰ The number of knife crime offences is an indicator of how effective Essex Police is at identifying knife-enabled offences, and is not necessarily reflective of the number of these offences that have been committed in the county. This is because the identification of these offences is reliant on the appropriate indicator being manually added to the crime record. A manual review of knife flags was conducted and missing flags were added retrospectively. Additionally a new data quality process was introduced in June 2020. Whilst this has enabled us to better understand knife crime in Essex, the process has consequently inflated the figures. As such, no inferences can be drawn as to the current trend.

¹¹ The number of Modern Slavery referrals made to the National Referral Model are a comparison of April to June 2019 and April to June 2020, due to a change in the method of recording in April 2019.

Crime Tree Data – Rolling 12 Months to June

Table 3

Victim Based: Under Reported		Offences										Solved Outcomes										Solved Rates %											
Crime Type	% DA 2020	2019	2020	# diff.	% diff.	Z	CSS	1m Jun 19	1m Jun 20	Yr on Yr 1m % diff.	3m Jun 19	3m Jun 20	Yr on Yr 3m % diff.	2019	2020	# diff.	% diff.	1m Jun 19	1m Jun 20	Yr on Yr 1m % diff.	3m Jun 19	3m Jun 20	Yr on Yr 3m % diff.	2019	2020	% pt. diff.	Z	1m Jun 19	1m Jun 20	Yr on Yr 1m % pt. diff.	3m Jun 19	3m Jun 20	Yr on Yr 3m % pt. diff.
Racial/Religiously Aggravated Offences	1.0	1499	1632	133	8.9	2.9		100	192	92.0	383	432	12.8	263	273	10	3.8	20	26	30.0	70	90	28.6	17.5	16.7	-0.8	-0.5	20.0	13.5	-6.5	18.3	20.8	2.6
Hate Crime HO Definition	3.5	2798	3106	308	11.0	2.5		258	343	32.9	759	791	4.2	369	395	26	7.0	30	35	16.7	84	127	51.2	13.2	12.7	-0.5	-0.8	11.6	10.2	-1.4	11.1	16.1	5.0
Domestic Abuse	100.0	27300	30333	3033	11.1	1.0		2352	2564	9.0	7094	7397	4.3	3221	3315	94	2.9	250	332	32.8	692	1018	47.1	11.8	10.9	-0.9	0.0	10.6	12.9	2.3	9.8	13.8	4.0
- High Risk Domestic Abuse	100.0	2522	2667	145	5.7	1.0		225	233	3.6	670	619	-7.6	811	725	-86	-10.6	69	56	-18.8	182	169	-7.1	32.2	27.2	-5.0	-1.1	30.7	24.0	-6.6	27.2	27.3	0.1
- Medium Risk Domestic Abuse	100.0	4874	4629	-245	-5.0	-0.9		389	346	-11.1	1242	971	-21.8	1039	996	-43	-4.1	66	90	36.4	206	270	31.1	21.3	21.5	0.2	0.7	17.0	26.0	9.0	16.6	27.8	11.2
- Standard Risk Domestic Abuse	100.0	18034	21438	3404	18.9	1.3		1531	1796	17.3	4676	5370	14.8	1167	1409	242	20.7	98	174	77.6	268	512	91.0	6.5	6.6	0.1	1.0	6.4	9.7	3.3	5.7	9.5	3.8
- No Risk Assessment	100.0	1870	1599	-271	-14.5	-0.1		207	189	-8.7	506	437	-13.6	204	185	-19	-9.3	17	12	-29.4	36	67	86.1	10.9	11.6	0.7	-0.2	8.2	6.3	-1.9	7.1	15.3	8.2
State Based Crime		Offences										Solved Outcomes										Solved Rates %											
Crime Type	% DA 2020	2019	2020	# diff.	% diff.	Z	CSS	1m Jun 19	1m Jun 20	Yr on Yr 1m % diff.	3m Jun 19	3m Jun 20	Yr on Yr 3m % diff.	2019	2020	# diff.	% diff.	1m Jun 19	1m Jun 20	Yr on Yr 1m % diff.	3m Jun 19	3m Jun 20	Yr on Yr 3m % diff.	2019	2020	% pt. diff.	Z	1m Jun 19	1m Jun 20	Yr on Yr 1m % pt. diff.	3m Jun 19	3m Jun 20	Yr on Yr 3m % pt. diff.
Drug Offences	0.0	4598	6952	2354	51.2	2.1		377	708	87.8	1306	2321	77.7	4067	6302	2235	55.0	385	616	60.0	1151	2074	80.2	88.5	90.7	2.2	-0.1	102.1	87.0	-15.1	88.1	89.4	1.2
- Trafficking of Drugs	0.0	763	1047	284	37.2	1.4		59	97	64.4	193	317	64.2	546	761	215	39.4	58	74	27.6	147	249	69.4	71.6	72.7	1.1	0.6	98.3	76.3	-22.0	76.2	78.5	2.4
- Possession of Drugs	0.0	3835	5905	2070	54.0	2.1		318	611	92.1	1113	2004	80.1	3521	5541	2020	57.4	327	542	65.7	1004	1825	81.8	91.8	93.8	2.0	-0.4	102.8	88.7	-14.1	90.2	91.1	0.9
Possession of Weapons	0.8	1818	1395	-423	-23.3	-1.2		101	106	5.0	382	322	-15.7	1230	809	-421	-34.2	73	71	-2.7	208	208	0.0	67.7	58.0	-9.7	0.2	72.3	67.0	-5.3	54.5	64.6	10.1
Public Order	8.8	13985	15439	1454	10.4	2.0		1234	1526	23.7	3855	4056	5.2	2127	2201	74	3.5	170	205	20.6	525	677	29.0	15.2	14.3	-1.0	-0.8	13.8	13.4	-0.3	13.6	16.7	3.1
Miscellaneous Crimes against Society	16.6	3692	3631	-61	-1.7	0.8		353	323	-8.5	1034	935	-9.6	626	761	135	21.6	63	73	15.9	173	211	22.0	17.0	21.0	4.0	1.3	17.8	22.6	4.8	16.7	22.6	5.8

Crime Severity Score (CSS) - Based on the ONS Crime Severity Score which replaces the Cambridge Harm Index - data are for the 12 months to April 2020, (a total of 21 crime types have been ranked where scores are available).

The CSS excludes proactively generated crime detection by police i.e. State Based Crime, as these offences do not reliably measure harms experienced by the population. Rather, they measure the resources invested in catching offenders.

Yr on Yr 1m %/% pt. diff. - compares the month of June 2020 with the month of June 2019.

Yr on Yr 3m %/% pt. diff. - compares the three months to June 2020 with the three months to June 2019.

Z Score - Standard Score over 1.96 or under -1.96. Standard Scores are used to calculate the probability of an event occurring within a normal distribution; they are also used to compare two scores from different normal distributions (for example the number of offences per police District). In this document, Standard Scores are calculated in the following way: (current month's figure, minus the average figure per month over the previous three years) divided by the Standard Deviation of the same three year period. Standard Deviation is a measure to determine how spread out figures are from the average or "mean" a large standard deviation indicates the data is widely spread; if small, the data will be more clustered together.