

Performance and Resources Scrutiny Programme 2020

Report to: The Office of the Police, Fire and Crime Commissioner for Essex

Title of Report:	Crime Prevention Strategy Delivery Plan
Agenda Number:	9.0
Chief Officer	ACC Prophet
Date Paper was Written	13/03/2020
Version Number	3
Report from:	Essex Police
Date of Meeting:	26th March 2020
Author on behalf of Chief Officer:	Chief Inspector 3027 BALDING
Date of Approval:	16th March 2020

1.0 Purpose of Report

This report is an update on the delivery against the Essex Crime Prevention Strategy (2018-2021). The report also provides an update on the preventative activity the force is driving in relation to business and rural crime.

2.0 Recommendations

There are no specific recommendations, but the Board is invited to note and comment upon the content of the report.

3.0 Executive Summary

The rate of crime increase in Essex continues to slow. Previous reports to the OPFCC office have detailed how only a proportion of the increase in recorded crime relates to more physical crime with the remainder attributable to changes in Home Office Counting Rules of effort the force continues to make to accurately record all crime. Domestic abuse, knife crime and hate crime are the crime types continuing to show the largest increases.

The force have looked specifically at knife / blade crime recording and the presence of 'knife used' within the course of an incident or investigation and established it was not always captured in a way that allows for accurate reporting or analysis.

Under the guidance of the Op Sceptre Tactical Co-Ordinator, the Performance Analysis Unit and Crime Bureau have worked together to develop a new process that facilitates the accurate recording of knife crime. This process uses both the ATHENA and STORM systems. This new methodology allows for the verification of information between the two systems, providing compliance reports for the Crime Bureau. This builds in quality assurance to the process allowing Essex Police to confidently report and analyse the true scale of knife crime across the county.

The force continues to put a significant amount of focus onto crime prevention and is working strategically with key partners including county and district councils, mental health services and others to tackle long term and system related causes of crime such as drug and alcohol abuse.

4.0 Introduction/Background

The Essex Crime Prevention Strategy is set out at **Appendix 1**. The strategy target nine key areas of crime prevention each of which is assign a senior operational lead:

1. Domestic Abuse - Chief Superintendent Mariner
2. Gangs & Knife Crime - Chief Superintendent Harman
3. Night Time Economy - Superintendent Hallworth
4. Child Abuse & Exploitation – D/Ch. Superintendent Baldwin
5. Extremism & Radicalisation - Chief Inspector Balding
6. Hate Crime - Detective Superintendent Cannon
7. Digital Crime & Fraud - Detective Chief Inspector Truss
8. House Burglary & Street Robbery - Chief Superintendent Anslow
9. Serious and organised crime - Detective Chief Inspector Morton

In addition, the report will update on the activity the force is leading in relation to business and rural crime both lead by Chief Inspector Balding.

5.0 Domestic Abuse:

A force-wide governance board is now well established and provides leadership and oversight of all DA related activity. The increase in DA is significant driven by compliance with Home Office Counting Rules and accurate recording of crime. The level of increase in the last 5 months appears to have slowed.

The Essex Leaders and Chief Executives have recently agreed to redouble preventative / partnership efforts to tackle domestic abuse. A piece of work has been commissioned, to report in Autumn 2020, looking at how at the district level resources (people and money) can be realigned to target repeat perpetrators.

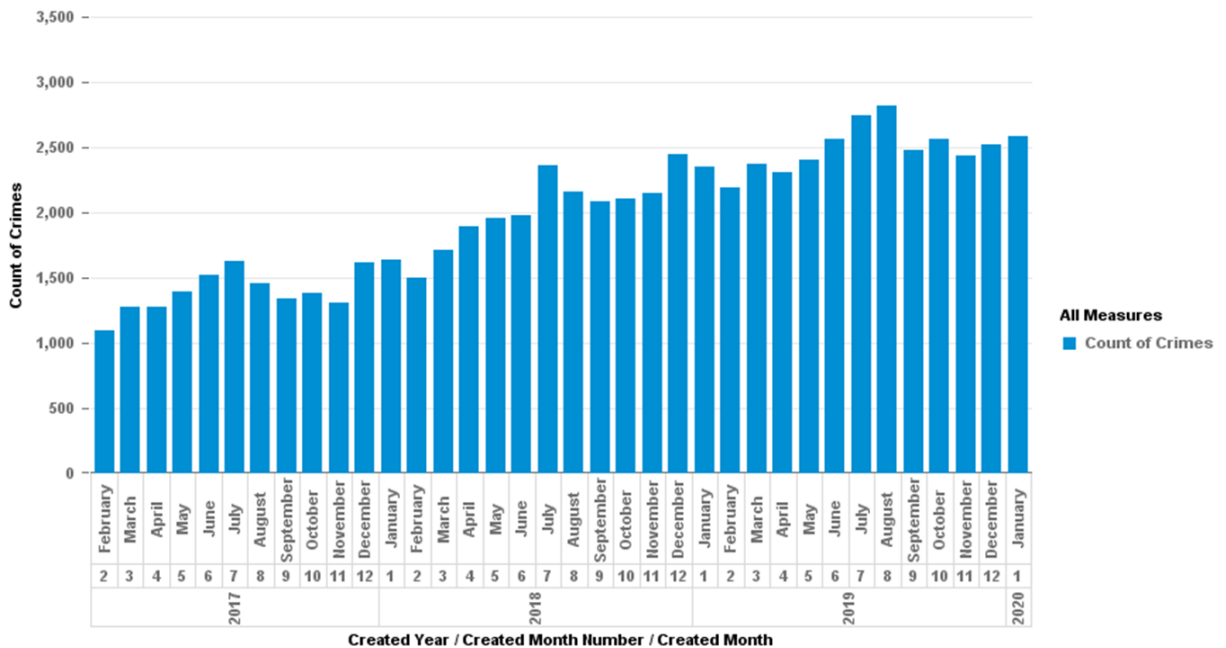
Increasing the use of Body Worn Video (BWV) in interview and Domestic Violence Preventive Orders (DVPO) (a controlling / preventative measure) as custody outcomes are priority measures of success and are tracked on a monthly basis.

Refreshed force wide training for DA for all front-line police officers is under way. This includes initial attendance, use of out of court options such as DVPN's and Local Policing supervisors and managers dip sampling STORM incidents, BWV footage and Athena records to improve solved rates.

DA Offences

12 months to end of January 2020:

12 Month ending Jan 19	12 Month ending Jan 20	Diff.	% Diff.
24675	29981	5306	+21.5%



5.1 Knife Crime:

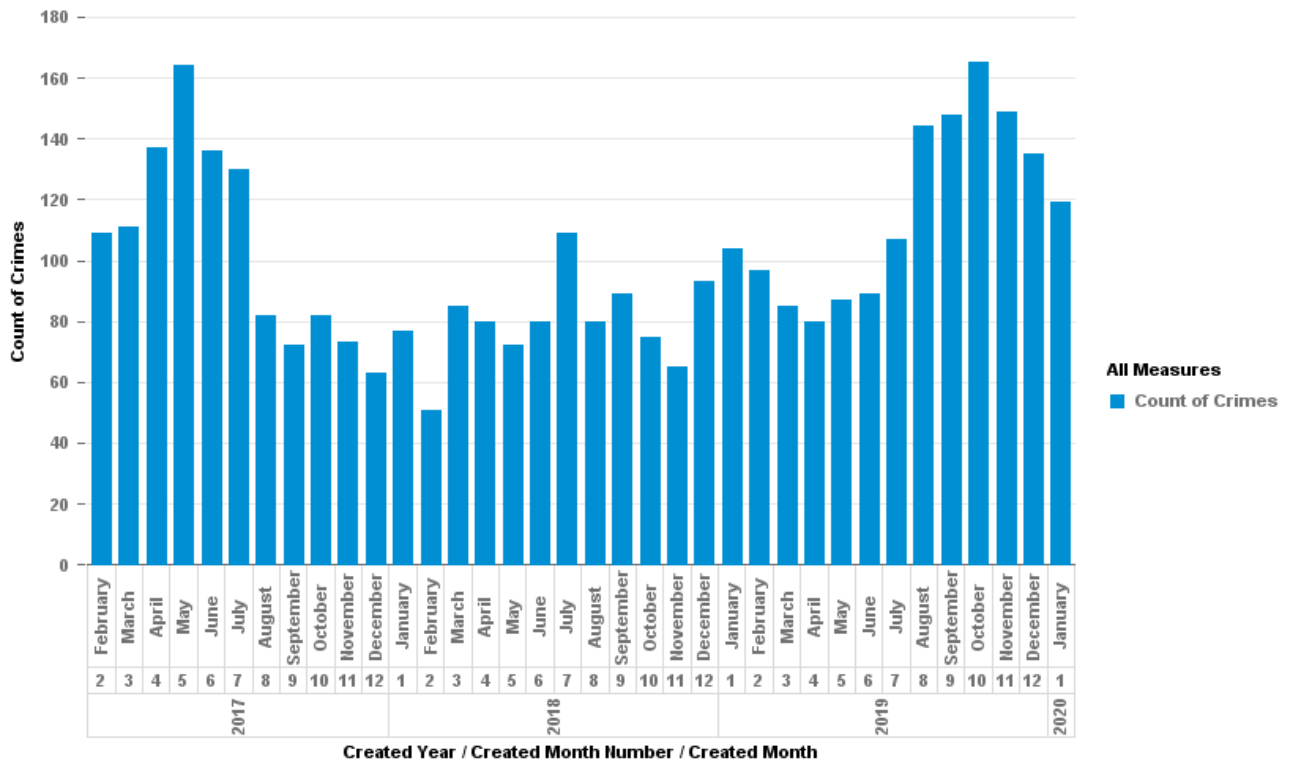
There have been 207 Operation Sceptre deployments since June 2019, an average of 40 each month. These have resulted in over 800 arrests and 7545 stop and searches. The following operations have been instigated in respect of Knife Crime.

- **Operation Gloss** – Working with the Border Force, Essex Police has trialled an enhanced process to expeditiously receive and deal with imported weapons seized by the Border Force which are destined for Essex homes.
- **Operation Zeal** – Force wide days of action targeting known knife carriers and groups associated with serious violence. Seven operations have been undertaken leading to 80 arrests.
- **Operation Produce** – Three two-week intensification periods have taken place targeting nominated county lines across the County. The investigation phase is led by the Local Policing Area (LPA) Raptor team with support from SCD and Level 2 Intelligence, leading to warrants and `upstream` activity with assistance from the Metropolitan Police. This was enhanced by Community Policing Team (CPT) and Operational Policing Command (OPC) assets who have saturated the area for two weeks, including overt and covert activity with days of action supported by Roads Policing and British Transport Police (BTP).

Knife Crime Offences

12 months to end of January 2020:

12 Month ending Jan 19	12 Month ending Jan 20	Diff.	% Diff.
983	1405	422	+42.9%



5.2 Night Time Economy (NTE):

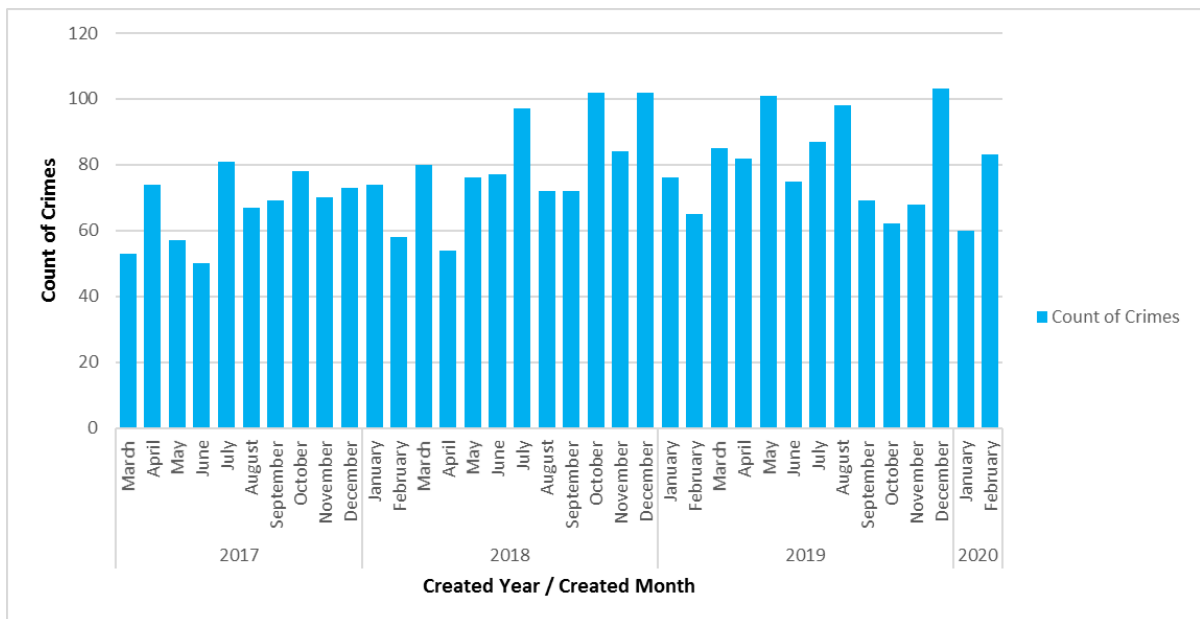
Supt John Hallworth has taken on the role of NTE and immediately began refreshing the 4P plan. Updates already under way under the new lead are:

- Each NTE tactical delivery plan will have a local owner from the newly created Town Teams.
- A quarterly strategic NTE crime reduction panel will be convened with key personnel and stakeholders, from which measures of success against the objectives will be assessed
- A ‘What Works’ evidence review will be conducted to explore potentially impactful approaches for the future.

NTE Offences

12 months to end of February 2020:

12 Month ending Feb 19	12 Month ending Feb 20	Diff.	% Diff.
948	971	23	+2.4%



5.3 **Child Abuse & Exploitation (CSE):**

The Catalyst Project

A collaboration with the University of Essex. Data extracted from Athena around CSE has been provided and the university are in the process of mapping where patterns and trends occur relating to teenage rape offences. The anonymised data is input into a secure online platform which provides useful mapping, charts, graphs and key findings from that data. Data from the platform has and continues to be analysed and made available to commands with plans to share at local children's boards. A first draft report has been provided by the Catalyst Project based upon 4 years of data. A second version of the report is being prepared on request to include overlaid open source material with supporting analysis. It is anticipated the initial findings will assist in highlighting where further work, analysis and targeted research should be focussed to provide additional value.

CSE Team

CSE Team, the launch of a new CSE Investigations Team is anticipated to be established ready for go-live on 1st April 2020. This will enable the Force to create a unit to centralise the investigations of CSE, with a view to providing increased focus around victim engagement, performance improvements and centralised supervisory review mechanisms to improve investigative standards in this area.

Case Progression Team

Case Progression Team launched in January 2020, based at headquarters, to support the ASAIT hubs across the county to reduce the demand on those offices and focus on progressing cases to CPS likely to resulting in a conviction. The Case Progression Team will seek to improve with the quality of file submissions, building positive working relationships with key agencies, such as CPS, to strengthen the multi-agency activity. The aim of increasing solved outcomes and improving outcomes for victims.

North PPIU are trialling an additional Investigation Progression Team utilising existing staff, to focus on delivering a higher solved rate and outcomes.

5.4 **Extremism & Radicalisation:**

Local Policing Support Unit (LPSU) have run a joint event with Eastern Regional Serious Organised Unit (ERSOU) - Action Counters Terrorism Training, this is a powerful new tool with the focus on the critical role the public can play to defeat terrorism. All SIAG/IAG and local community and faith members were invited. Eastern Region Special Operations Unit, Counter Terrorism Policing ERSOU (CPT), Prevent have received 32 referrals in the time period of 01/12/2019 – 25/02/2020. These referrals can be broken down into the following thematic areas:

- Extreme Right Wing (XRW) - 11
- Mixed/Unstable/Unclear - 10
- Islamist - 4
- School Shooter Ideology - 3
- Involuntary Celibacy (INCEL) - 2
- Northern Ireland Related - 2

ERSOU, have three Channel Panels each month (Essex, Southend and Thurrock), who also hold extraordinary Channel Panels depending on their Prevent Gateway Assessments (risk and vulnerability assessments) as cases may need to be heard more expediently than the 4 weekly planned meeting.

From December 2019 to date 27th February 2020:

- Cases heard at Channel - 17
- Cases waiting to be heard - 4
- Cases adopted by Panel - 7

5.5 Hate Crime:

A recent hate crime review has been undertaken with positive results, showing an improvement in the overall quality of hate crime investigations. Local recommendations are now being worked through by LPA Command Teams in order to further enhance the levels of service being provided.

No significant hate crime in respect of EUExit has occurred this quarter however nationally hate crime is increasing in respect of Covid 19 with those in the Chinese or perceived Chinese community most effected. Essex is following the national trend in respect of hate crime and the virus however the numbers are low. Local Policing Support Unit are monitoring the situation daily.

A hate crime survey was recently commissioned, generating positive results in terms of victim satisfaction.

Partnership activity through the Strategic Hate Crime Partnership Board remains focused to ensure a consistent approach to signposting and supporting victims of hate crime.

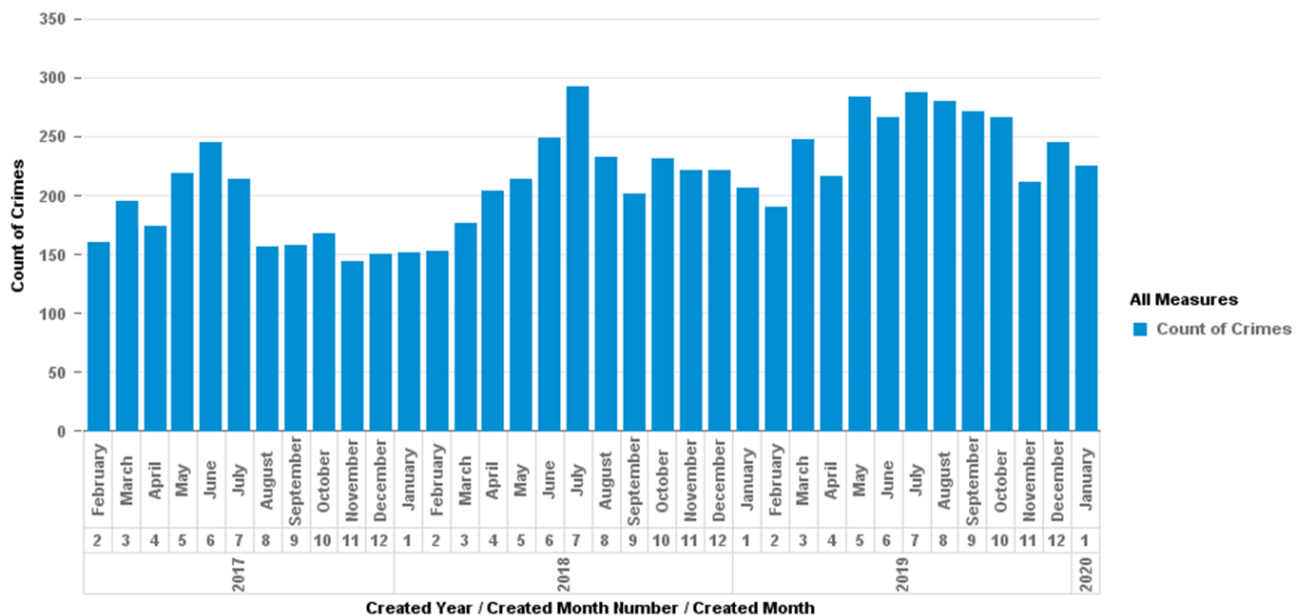
District based Community Impact Assessments and engagement plans remain live in order to monitor and respond to any tensions linked to EU Exit.

Dates have now been secured for CPD training supported by Guide Dogs for the Blind to help officers better understand and tackle hate crime against blind victims

Hate Crime Offences

12 months to end of January 2020:

12 Month ending Jan 19	12 Month ending Jan 20	Diff.	% Diff.
2605	2992	387	+14.9%



5.6 Fraud:

Fraud Co-ordinators have been recruited and implemented within Essex Police and work directly under the newly created Business Crime Sergeant. The Fraud Co-ordinators follow the successful Operation Signature Model (Sussex Police and endorsed by HMIC.) This includes working with financial institutions with crime prevention displays, reacting to suspicious activity and safe guarding vulnerable victims.

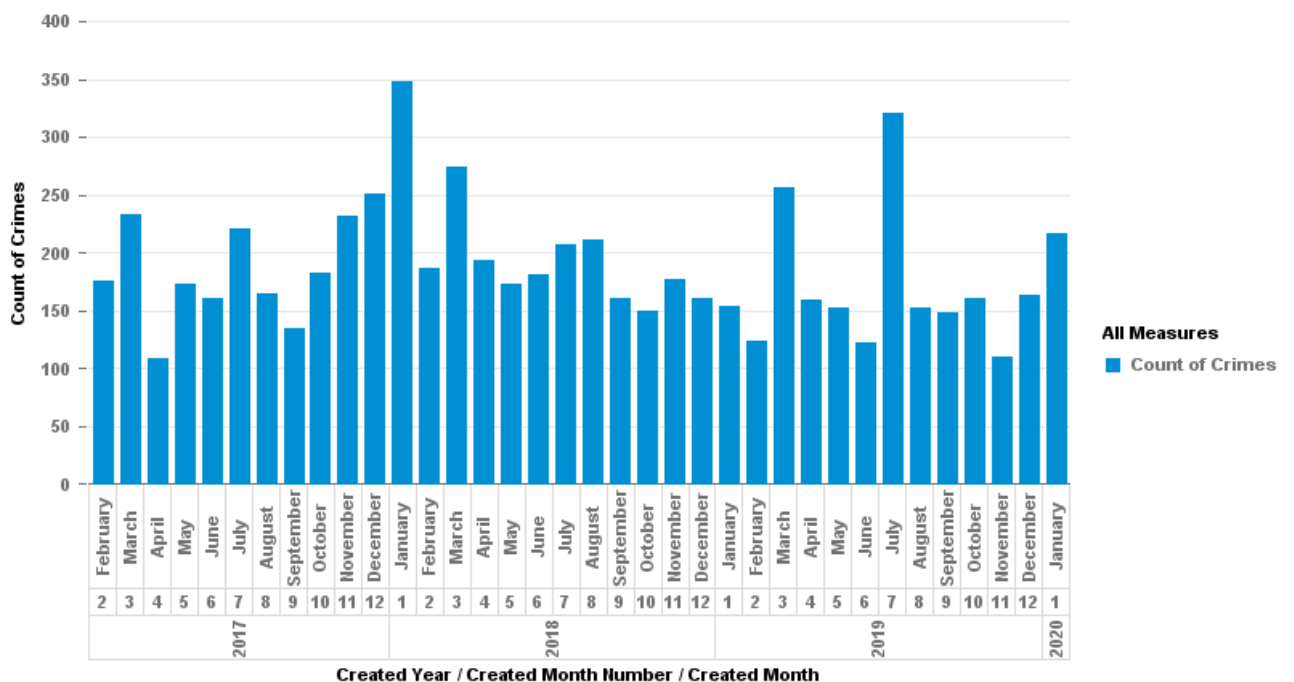
Fraud volunteers have been recruited by the SCD with the purpose to visit potential victim groups and victims based on record fraud hotspots, for example, a location targeted by Rogue Traders.

The Fraud department work closely with UK Finance in respect of the UK 'Banking Protocol' in order to minimise the risk of fraud bank accounts and now phone accounts. If fraud activity is suspected then the Protocol allows for the account to be suspended, Police notified and establish if offences have occurred and for investigation and safe guarding to take place.

Fraud Offences

12 months to end of January 2020:

12 Month ending Jan 19	12 Month ending Jan 20	Diff.	% Diff.
2228	2087	-141	-6.3%



5.7 Cyber:

Officers are regularly engaging with local businesses to provide advice around protection from cyber related matters. In the last year, Prevent & Protect has delivered presentations to over 25,600 individuals and businesses.

Prevent & Protect utilise media to circulate key messaging and have published in both local and national publications, e.g. a 2 page article in the Essex Business Time magazine reaching an audience of thousands. We are linked into national campaigns such as the Matrix Challenge for schools; this national cyber skills competition is open to all 11-17 year olds, competing in one of two age categories (11-14 or 15-17 years). The Matrix Challenge tests participant’s knowledge of The Computer Misuse Act, how to stay safe online and develops cyber skills.

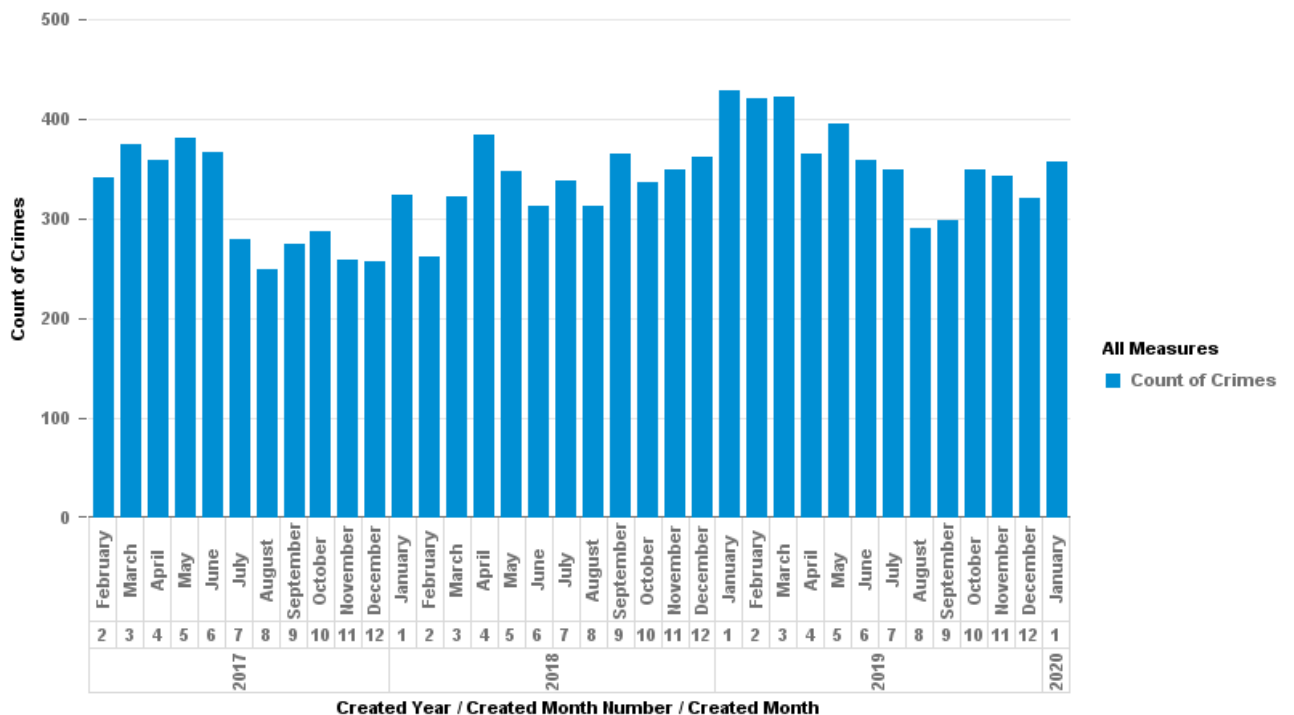
We also work with suspects to divert them onto positive pathways by delivering Cease & Desist notices. Working with NCA and ERSOU, we are notified of Essex residents purchasing cyber programmes known to be utilised for criminality. We then proactively visit them and seek to minimise the risk of offending.

To support preventative work, we have recruited 2 cyber volunteers and a cyber PCSO; these being selected for their specific skills in order to assist with both reactive investigations and support the Prevent & Protect Team proactively.

Cyber / Online Offences

12 months to end of January 2020:

12 Month ending Jan 19	12 Month ending Jan 20	Diff.	% Diff.
4118	4267	149	+3.6%



5.8 Business Crime:

Essex Police have recently created a sole purpose Business Crime Team in the early part of 2020, which is overseen by a Chief Inspector and consists of a Police Sergeant, two Police Constables and an analyst. The team is further supported by three Fraud Co-ordinators. This is a new team supported by Essex Chief Officers and the Police Fire & Crime Commissioner. Since the summer of 2019 Essex Police have worked in partnership with the Essex Chamber of Commerce and the Office Police Fire Commissioner in the creation of an innovative Business Crime Strategy which was launched on the 21st February 2020. Through an initial joint working group which had included the National Business Crime Unit, and a number of other partners an exciting Business Crime Strategy has been created which now guides, supports and empowers businesses and Police within Essex.

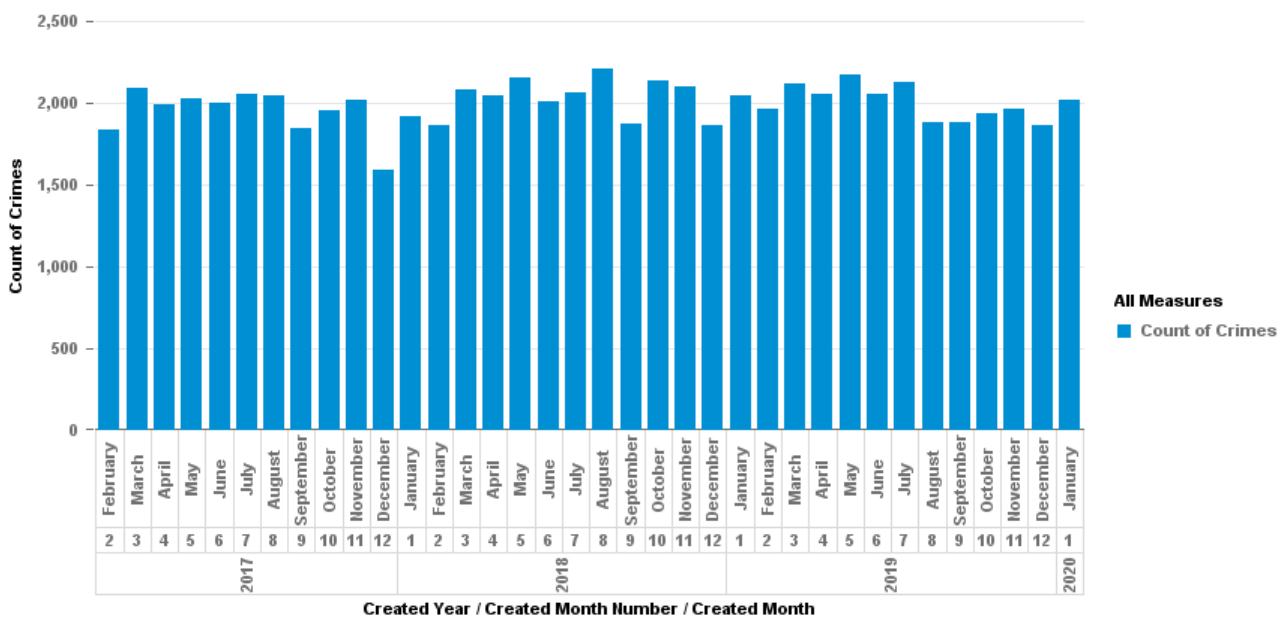
The strategy has the following objectives:

- Tackling those who commit crimes against business.
- Give confidence to those who fear crime and support to businesses who have been victims.
- Partnership work with businesses to ensure awareness of best practise and businesses are empowered to reduce the risk of crime.
- All partners will work with businesses to encourage reporting of crime to gain an accurate picture of business crime in Essex.

Business Crime Offences

12 months to end of January 2020:

12 Month ending Jan 19	12 Month ending Jan 20	Diff.	% Diff.
24429	24043	-386	-1.6%



5.9 Rural Crime:

The Rural Engagement Team has grown in size and impact across the county of Essex. It has transformed from one uniform Sergeant to two Sergeants, one dedicated Special Constable and by April 2020 it will have increased to eleven constables, including a wildlife crime expert, making it the largest rural team within the Country.

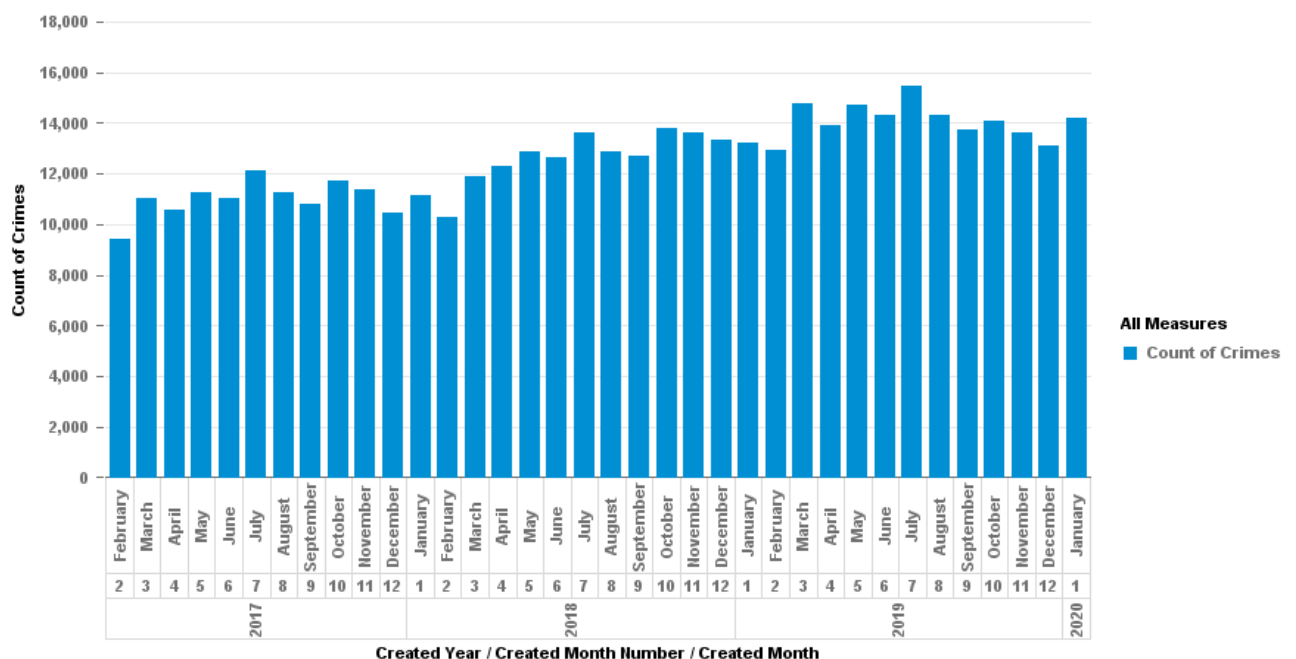
The team works closely with the Gypsy and Traveller community, building up trust and confidence in policing without boundary or prejudice. Those that live a nomadic life are supported, assisted, and signposted to partner agencies as appropriate. The positive but supportive approach has resulted in a reduction of 59.6% in unauthorised encampments across the county from when the team first formed.

Hare coursing is the most significant concern for farmers and landowners in rural Essex with it being connected to public order, criminal damage and offenders often linked to organised gangs from outside of Essex. With the sentencing being perceived as low, the team have created a clear detailed response plan which gives direction from the incident being called in to forensic recovery, case action plan and case management. The first CBO order was granted in January 2020 following a successful court hearing. This robust approach has resulted in a decrease of 27.4% September to December 2019 from the same period in 2018, against a backdrop of significant rises in offences in neighbouring forces.

Rural Crime Offences

12 months to end of January 2020:

12 Month ending Jan 19	12 Month ending Jan 20	Diff.	% Diff.
12897	13107	210	+1.6%



5.10 House burglary:

Op Meteor is a countywide initiative to reduce dwelling burglary which commenced in 2019 and now concluded in respect of 3,098 out of the 4,000 property marking kits being deployed across the county with 6,177 properties called upon during the deployment.

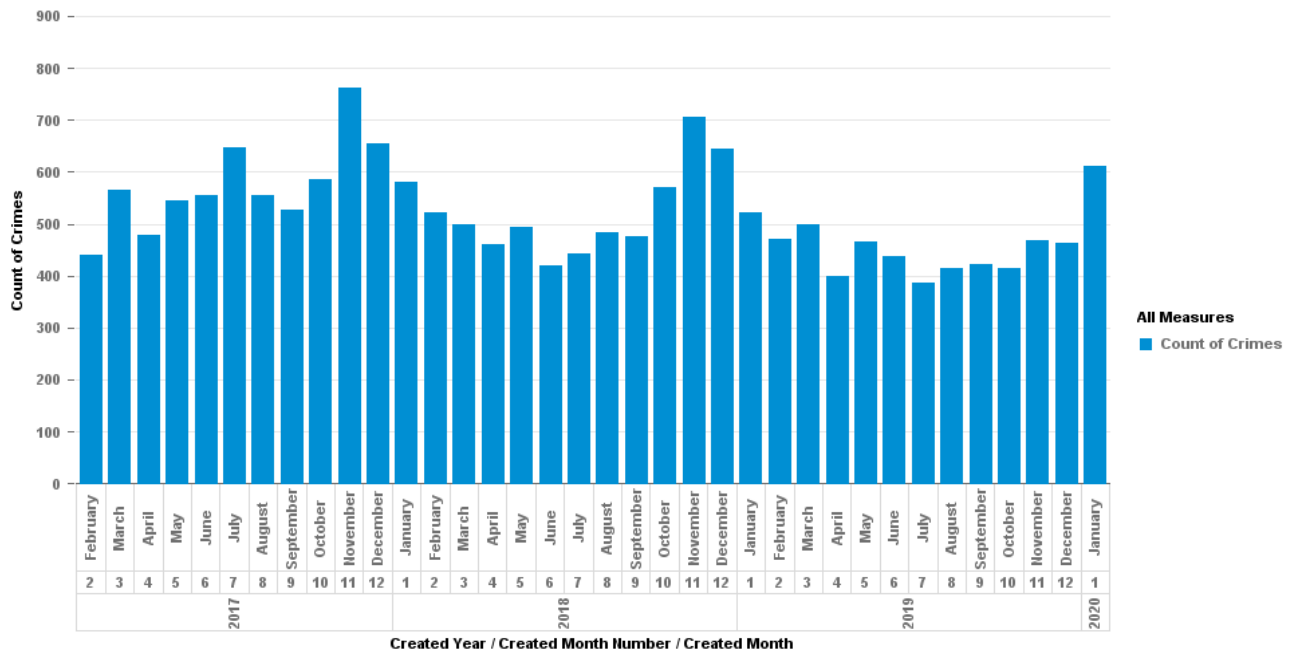
PIER are conducting an academic evaluation which will provide an interim report in April 2020. The independent evaluation will seek to identify the benefits of the different property marking solutions and provide an evidence base for future funding decisions on this area of crime reduction.

A proposal has been prepared detailing options including extending the property marking phase to cover second hand outlets and markets (car boots, pawn shops etc.). In addition, the LPAs are working with Local Policing Support Unit (LPSU) to develop proactive operations and initiatives to target criminals using innovative techniques.

Burglary (Dwelling) Offences

12 months to end of January 2020:

12 Month ending Jan 19	12 Month ending Jan 20	Diff.	% Diff.
6244	5452	-792	-12.7%



5.11 Street Robbery:

Operationally the focus on knife crime and knife crime hotspots is likely to have had a positive impact on personal robbery, with deployments of additional resources into areas also more frequently experiencing robbery offences.

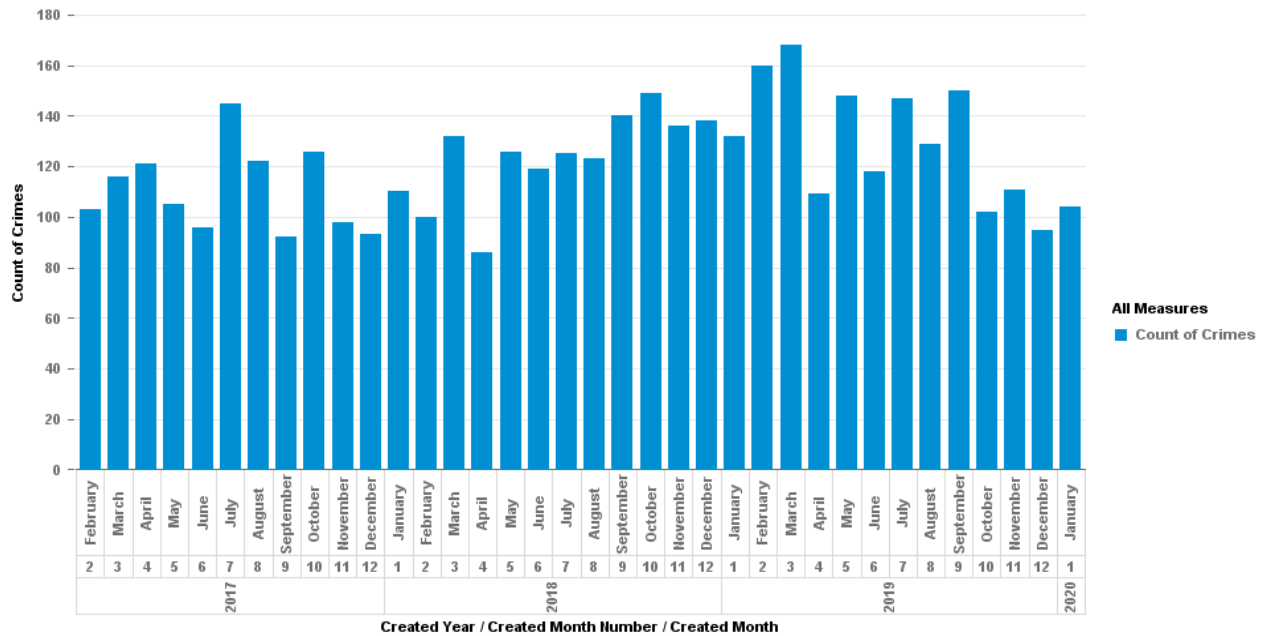
The Op Tigress response plan remains in place to ensure an effective initial response to street robbery offences.

Moving through 2020/21 the new lead for Residential Burglary and Personal Robbery will review up to date analysis and progress against existing 4P plans to ensure that operational activity and partnership working delivers crime reduction.

Robbery (Personal) Offences

12 months to end of January 2020:

12 Month ending Jan 19	12 Month ending Jan 20	Diff.	% Diff.
1506	1541	35	+2.3%



5.12 **Serious and Organised Crime:**

Essex Police Modern Slavery Human Trafficking unit is now fully staffed and are providing a specialist function to the investigation of this crime type, this has increased proactive operations linked to MSHT and resulted in the safeguarding of 14 vulnerable trafficked victims.

Essex Police Serious Organised Crime (SOC) as a department continue to build key partnerships, within MSHT training is being done with community safety partnerships to help the community identify what modern slavery looks like. Partnership work with the Prevent and Protect Team includes working with schools, (for example Op Vicuna involved working with schools identified as being used as recruiting grounds for county lines), letting organisations and councils (checking the conditions of homes being let, ensuring the correct number of beds), gang licence units, teams that check farm labourer working conditions, continued operations with ports and when required, pushing back to partners who are better placed to deal with identified offences.

Through partnership with Justice and Care dedicated MSHT victim navigators have been embedded within the teams, this resource provides wider force support outside of SCD and is identified as a best practice model which is now being adopted by other forces outside of Essex Police.

Essex Police have enhanced the MSHT updates and training material on the internal website with links to mobile devices. This has now been published and is available to all officers as best practice guidance material to deal with such matters. In addition to this training packages are being delivered by the team to LPT officers on Flex training days as part of the new force shift pattern.

6.0 Implications (Issues)

None identified

6.1 Links to Police and Crime Plan Priorities

The creation and delivery of this strategy contributes to **all** areas of the PFCC Police and Crime Plan and should be considered an underlying theme throughout.

6.2 Demand & Risks

None identified

6.4 Equality and/or Human Rights Implications

None identified.

6.5 Health and Safety Implications

None identified.

7.0 Consultation/Engagement

- NPCC Crime Prevention Delivery Working Group
- NPCC Modernising Neighbourhood Policing Working Group
- NPCC Problem Solving Working Group
- Essex Chief Superintendents
- Key Community Safety Partners (via the Essex Community Safety Network and Safer Essex)
- LPSU & OPFCC stakeholders

8.0 Actions for Improvement

There are no outstanding HMICFRS improvement plans or Areas for Improvement (AFIs) relating to the Crime Prevention Strategy.

The depth and rigour of the performance data sets against the crime prevention priority strands,

9.0 Future Work/Development and Expected Outcome

The 9 Strategic Leads have reviewed their delivery plans to ensure they remain fit for purpose and reflect any relevant changes to legislation, national guidance and established good practice.

Work is still ongoing to standardise the reporting format for CSPs to meet the requirement for CSPs to report progress against the stated CSP objectives to secure continued funding.

10.0 Decisions Required by the Police, Fire and Crime Commissioner

None

Appendix 1 – Crime Prevention Strategy



Essex Police Crime
Prevention Strategy 2