

Police and Crime Plan 2016-2020

Monthly Performance Update

January 2020

National and MSG positions are to 31st December 2019 (Essex Police data are to 31st January 2020).

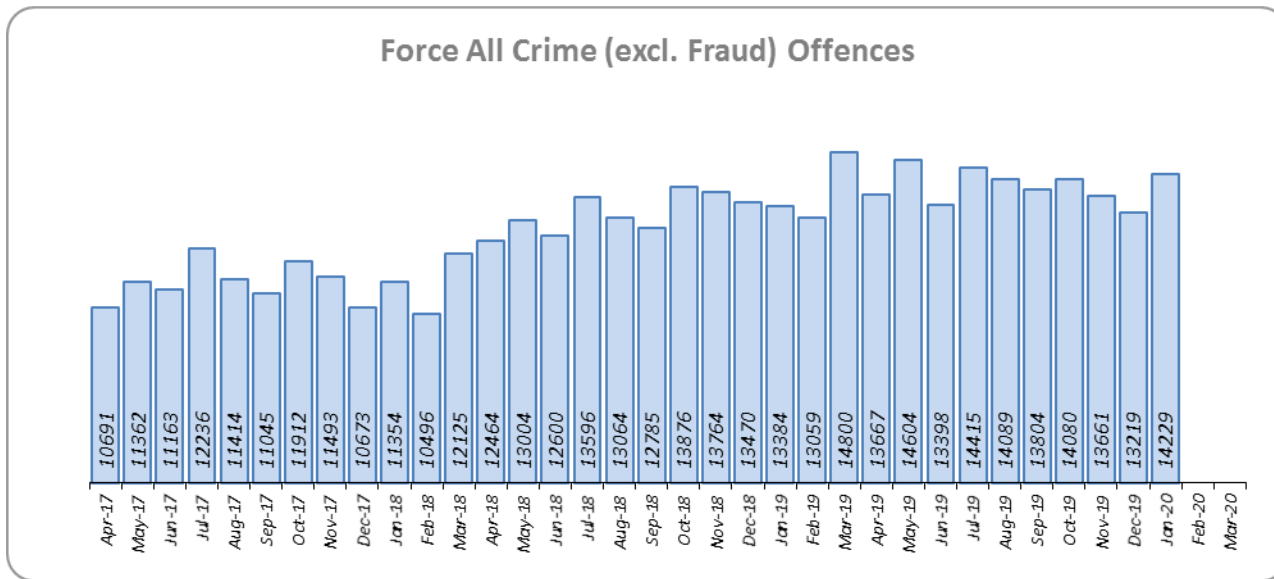


Version 1.5
Produced February 2020
Performance Analysis Unit, Essex Police
Sensitivity: Official

Executive Summary

- Three of the seven PFCC Priorities for Essex Police have been given a recommended grade of “**Good**”. Recommended grades have been determined with reference to comparisons with Essex Police’s Most Similar Group (MSG) of forces, internal Key Performance Indicators (KPIs), and professional judgement.
- Four of the seven PFCC priorities – 1 (More local, visible and accessible policing), 3 (Breaking the cycle of domestic abuse), 4 (Reverse the trend in serious violence) and 6 (Protecting children & vulnerable people) – have been given a recommended grade of “**Requires Improvement**”. None of these recommended grades have changed since the July 2019 report.
- All Crime has risen by 10.3% for the 12 months to January 2020 compared to the 12 months to January 2019. The increase in offences can, in part, be attributed to changes to Home Office Counting Rules in relation to Stalking & Harassment, as well as better Crime Data Accuracy (CDA).
- Essex Police solved 254 more crimes in the 12 months to January 2020 compared to the 12 months to January; this equates to a 1.1% increase. However, the All Crime solved rate continues to decline due to the increase in the number of crimes reported. The solved rate is currently 13.5%.
- Confidence (Essex Police internal survey) is at 65.2% (results to the 12 months to September 2019). Compared to year ending September 2018, confidence in the local police has significantly decreased (deterioration of 2.8% points). Confidence in the local police from the Crime Survey of England and Wales (CSEW) places Essex eighth in its MSG, and 10.7% points below the MSG average.
- Offence types Rape and Possession of Drugs experienced statistically significant changes for the month of January 2020. Rape experienced a 34.8% increase (550 more offences) for the 12 months to January 2020 compared to the 12 months to January 2019. Possession of Drugs experience a 56.0% increase (1,767 more offences) for the 12 months to January 2020 compared to the 12 months to January 2019.

Police Priority Indicators	12 months to January 2019	12 months to January 2020	Number Difference	% Difference	Essex per 1,000 pop.	MSG Ave per 1,000 pop.	# diff.	Essex MSG Position
Number of all crime offences	153,239	168,975	15,736	10.3	92.8	78.8	14.0	8



Essex experienced a 10.3% increase in All Crime (15,736 additional offences) for the 12 months to January 2020 compared to the 12 months to January 2019. Essex is eighth in its Most Similar Group of forces (MSG) for crime per 1,000 population.

The increase in offences can, in part, be attributed to changes to Home Office Counting Rules in relation to Stalking & Harassment, as well as better Crime Data Accuracy (CDA).

Essex was graded as Outstanding in its recent HMICFRS Crime Data Integrity (CDI) inspection. Essex Police is only the third force of the 41 that have been judged as outstanding on the first visit in this inspection programme.

Police Priority Indicators	12 months to Sept 2018	12 months to Sept 2019	% pt. Difference	% Difference
Percentage of people who have confidence in policing in Essex (internal survey Q13b)	68.0	65.2	-2.8	-
<i>Confidence Interval</i>	1	1.1		

Police Priority Indicators	12 months to Sept 2018	12 months to Sept 2019	Number Difference	% Difference	Essex	MSG Ave	# diff.	Essex MSG Position
Confidence in the local police (Crime Survey of England and Wales)	50.4	45.0	-5.4	-	45.0	55.7	-10.7	8
<i>Confidence Interval</i>	4.3	3.5			3.5	1.6		

Confidence (Essex Police internal survey) is at 65.2% (results to the 12 months to September 2019). Compared to year ending September 2018, confidence in the local police has significantly decreased (deterioration of 2.8% points).

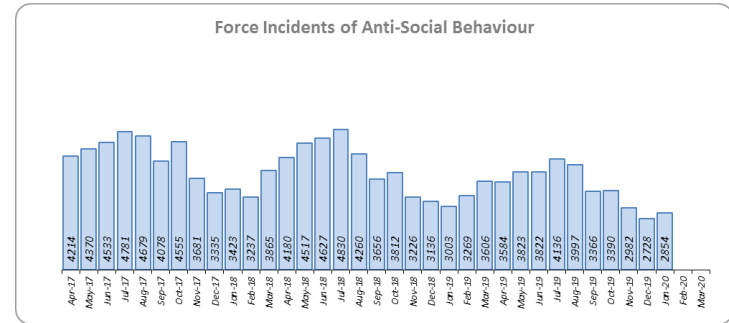
Confidence in the local police from the Crime Survey of England and Wales (CSEW) places Essex eighth in its MSG, and 10.7% points below the MSG average. However, the sample size from this survey is not representative at a sufficiently small scale to measure local issues. The Essex Police internal survey (results detailed above) was therefore introduced to achieve a more accurate local measure with a small margin of error. The results from the Essex Police survey show that the Force performs significantly better on confidence in local policing than the results from the CSEW, which asks the same question.

Due to the fact that Essex is 8th in its MSG for both crime per 1,000 population and for confidence in local police (CSEW), and that the Essex Police internal survey shows a deterioration in confidence in local police, a grade of Requires Improvement is recommended.

Priority 2 - Crack down on anti-social behaviour

Grade: **Good**

Police Priority Indicators	12 months to January 2019	12 months to January 2020	Number Difference	% Difference
Number of anti-social behaviour incidents	46,683	41,835	-4,848	-10.4



Police Priority Indicators	12 months to Sept 2018	12 months to Sept 2019	Number Difference	% Difference	Essex	MSG Ave	# diff.	Essex MSG Position
ASB Perception:- Perception that ASB is a problem (CSEW)	6.6	3.6	-3.0	-	3.6	4.7	-1.1	2
<i>Confidence Interval</i>	4.6	2.6			2.6	1.3		

Police Priority Indicators	12 months to Sept 2018	12 months to Sept 2019	% pt. Difference	% Difference
Percentage of people who have confidence Essex Police and the organisations they work with are dealing with ASB (internal survey Q8a)	66.9	63.0	-3.9	-
<i>Confidence Interval</i>	1.1	1.2		

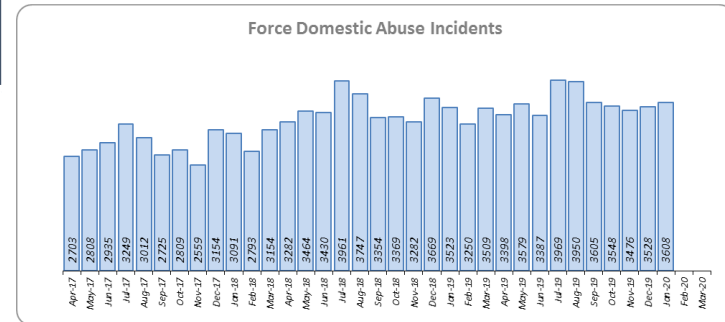
Essex experienced a 10.4% reduction (4,848 fewer) in Anti-Social Behaviour (ASB) incidents for the 12 months to January 2020 compared to the 12 months to January 2019. Part of this decrease is due to better Crime Data Accuracy (CDA); more incidents reported as ASB are now being correctly recorded as crimes. Some of the decrease may also be due to people reporting incidents directly to the Council and Housing Authorities.

ASB Perception (from the Crime Survey of England and Wales) in Essex experienced a 3.0% point decrease (improvement). Essex is 1.1% points better than the MSG average; this places Essex second in its Most Similar Group of forces. However, results of Essex's internal survey significantly decreased in relation to how well Essex and the organisations they work with deal with ASB (deterioration of 3.9% points).

Due to the reduction in ASB incidents, and the fact that ASB Perception is better than the MSG average, a grade of Good is recommended.

Police Priority Indicators	12 months to January 2019	12 months to January 2020	Number Difference	% Difference
Number of incidents of domestic abuse	41,028	42,807	1,779	4.3
Number of repeat incidents of domestic abuse	18,513	20,693	2,180	11.8

Police Priority Indicators	12 months to January 2019	12 months to January 2020	Number Difference	% Difference
Percentage of domestic abuse offences solved	13.5	10.0	-3.5	-
Total domestic abuse offences solved	3,323	2,987	-336	-10.1
High Risk domestic abuse offences solved	891	754	-137	-15.4
Medium Risk domestic abuse offences solved	1,099	965	-134	-12.2
Standard Risk domestic abuse offences solved	1,162	1,113	-49	-4.2



Essex experienced a 4.3% increase (1,779 more) in Domestic Abuse incidents and a 11.8% increase (2,180 more) in repeat incidents of Domestic Abuse for the 12 months to January 2020 compared to the 12 months to January 2019. The increase in crime, in part, can be attributed to better Crime Data Accuracy (CDA), and changes to Home Office Counting Rules (HOCR) in relation to Stalking & Harassment.

The Domestic Abuse solved rate fell by 3.5% points to 10.0% during the same period. The number of offences solved has also fallen by 336 offences.

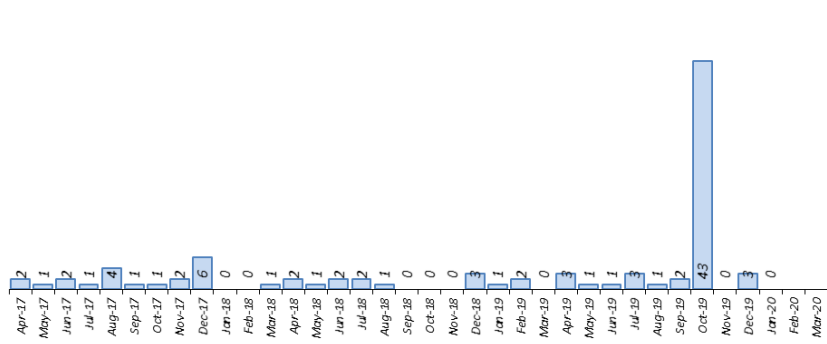
Due to the increase in repeat incidents and the decrease in both the solved volume and the solved rate, a grade of Requires Improvement is recommended.

Priority 4 - Reverse the trend in serious violence

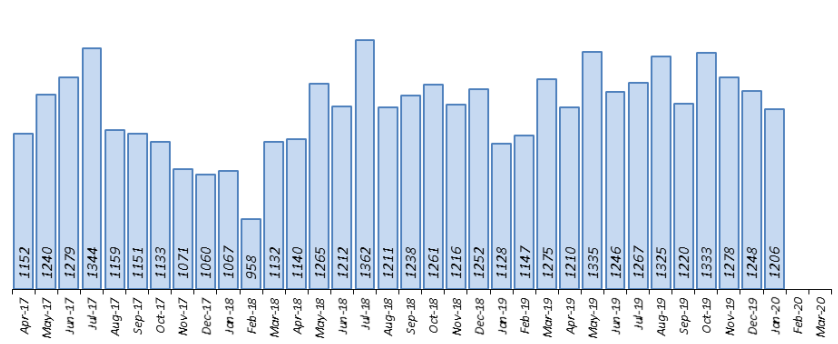
Grade: **Requires Improvement**

Police Priority Indicators	12 months to January 2019	12 months to January 2020	Number Difference	% Difference	Essex per 1,000 pop.	MSG Ave per 1,000 pop.	# diff.	Essex MSG Position
Number of homicides	14	59	45	321.4	0.034	0.011	0.022	8
Number of violence with injury offences (new definition from Nov 2017)	14,383	15,417	1,034	7.2	8.498	8.398	0.100	5

Force Homicide Offences



Force Violence with Injury Offences

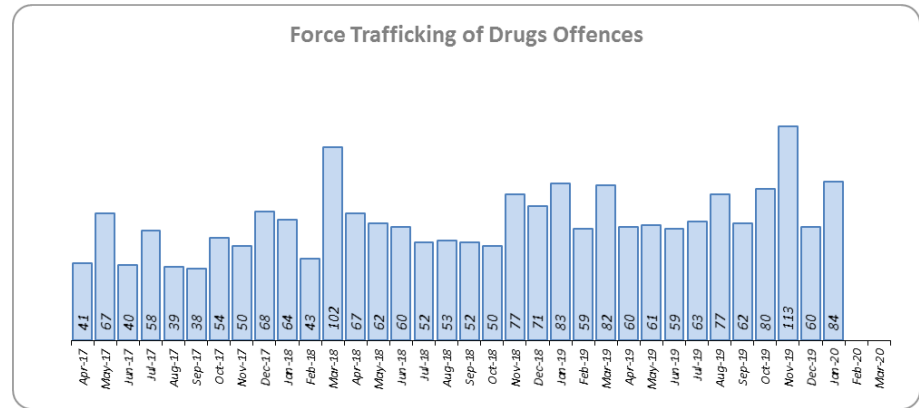
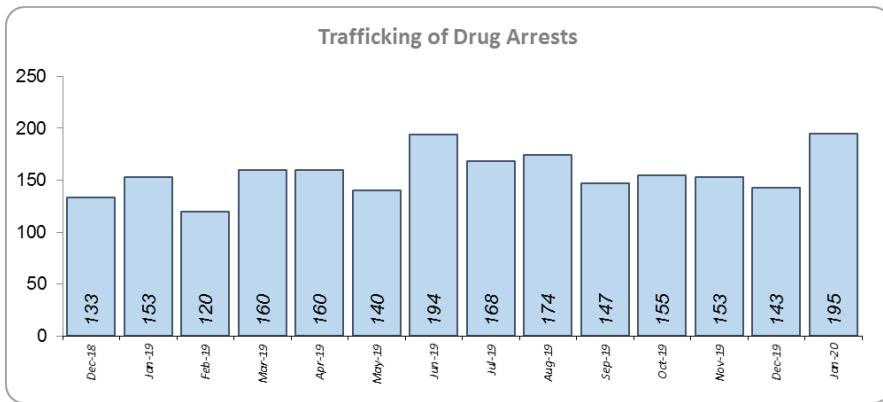


Essex saw an increase of 45 Homicides (to 59 offences) for the 12 months to January 2020 compared to the 12 months to January 2019. This includes the tragic incident where 39 Vietnamese nationals were discovered in a lorry trailer in Grays. Essex is eighth in its Most Similar Group (MSG) of forces for offences per 1,000 population, and is higher than the MSG average.

There was a 7.2% increase (1,034 more offences) in Violence with Injury. Essex is fifth in its MSG for offences per 1,000 population, and is slightly worse than the MSG average. The increase in this offence is, in part, due to the rise in domestic abuse related Violence with Injury (14.0% increase, 672 more offences); 35.4% of Violence with Injury is domestic abuse-related.

Due to the fact that Essex continues to experience an increase in Violence with Injury, a grade of Requires Improvement is recommended.

Police Priority Indicators	12 months to January 2019	12 months to January 2020	Number Difference	% Difference
Number of Organised Criminal Group disruptions*	8	5	-3	-37.5
Trafficking of drugs arrests	1,493	1,972	479	32.1



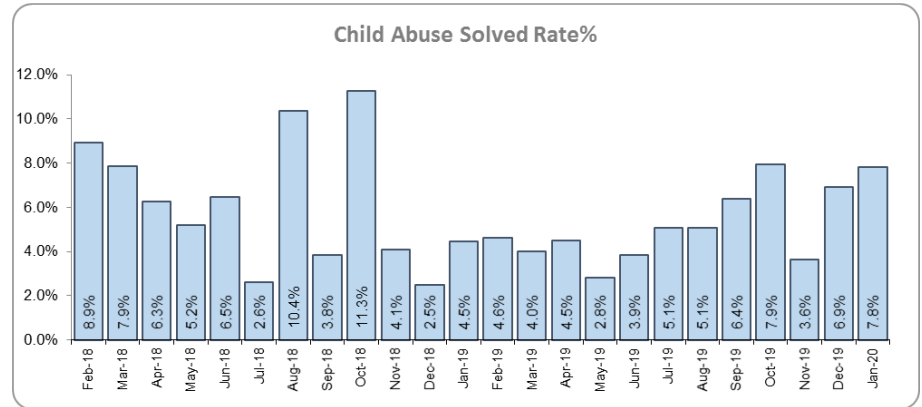
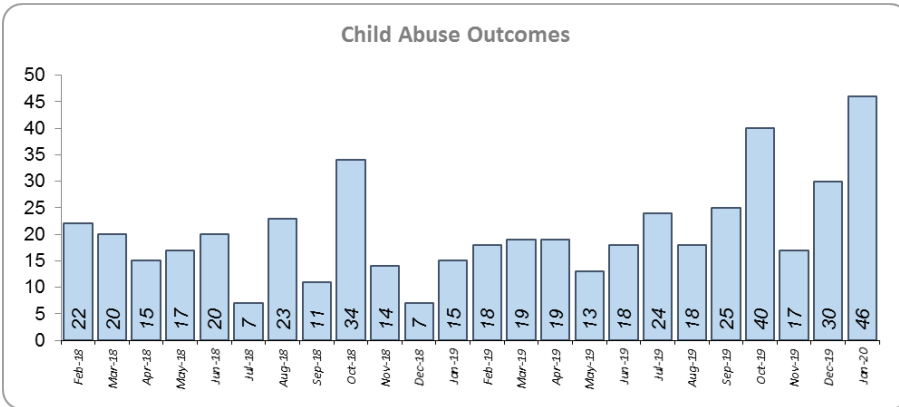
Five Organised Crime Group (OCG) disruptions were conducted in Essex in January 2020 compared with eight in January 2019 (three fewer).* In January 2019 there was a change in the way in which the number of OCG disruptions were counted; this follows National Crime Agency (NCA) and Eastern Region Special Operations Unit (ERSOU) guidance to ensure that all forces record disruptions in the same way.

Trafficking of drug arrests, which are also as a result of police proactivity, increased by 32.1% (479 more) for the 12 months to January 2020 compared to the 12 months to January 2019. In the same period, 21.0% more trafficking of drugs offences have been recorded (157 more offences to 906).

Due to the increase in Trafficking of Drug Arrests, a grade of Good is recommended.

*Please note that the number of Organised Crime Group disruptions are a comparison of January 2019 and January 2020, as there was a change in the method by which these disruptions were counted from January 2019.

Police Priority Indicators	12 months to January 2019	12 months to January 2020	Number Difference	% Difference
Number of child abuse outcomes	210	291	81	38.6
Child abuse solved rate	6.1	5.3	-0.9	-



There was a 38.6% increase (81 more) in the number of solved Child Abuse Outcomes in the 12 months to January 2020 compared to the 12 months to January 2019.

61.2% more offences (an additional 2,091) were recorded in the 12 months to January 2020 compared to the 12 months to January 2019. There was a 0.9% point decrease in the solved rate (from 6.1% to 5.3%).

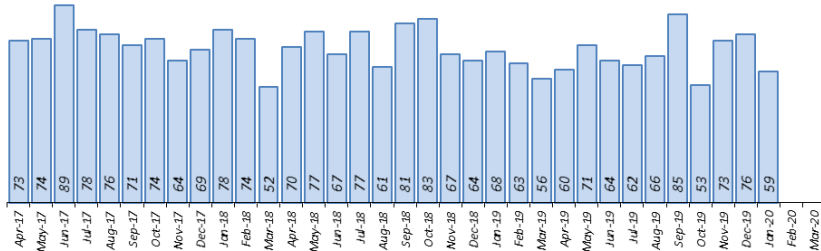
In spite of the increase in the number of Child Abuse solved outcomes, there is still a reduction in the solved rate. A grade of Requires Improvement is therefore recommended.

Priority 7 - Improve safety on our roads

Grade: **Good**

Police Priority Indicators	12 months to January 2019	12 months to January 2020	Number Difference	% Difference	Essex (per 100 million km) Data to December 2018	MSG Ave (per 100 million km) Data to December 2018	# diff.	Essex MSG Position
All people killed or seriously injured (KSI) in road collisions	859	818	-41	-4.8				
Number of driving related mobile phone crime on Essex roads	2,786	1,738	-1,048	-37.6				
Number of driving under the influence of drink and/or drugs on Essex roads	2,806	3,715	909	32.4				
<i>Number of driving under the influence of drink on Essex roads</i>	<i>1,346</i>	<i>1,479</i>	<i>133</i>	<i>9.9</i>				
<i>Number of driving under the influence of drugs on Essex roads</i>	<i>1,130</i>	<i>1,826</i>	<i>696</i>	<i>61.6</i>	1.287	1.102	0.185	6
<i>Number of Failure to Provide samples</i>	<i>330</i>	<i>410</i>	<i>80</i>	<i>24.2</i>				

Force People Killed or Seriously Injured in Road Collisions (KSIs)



Rolling 12 months	12m to Jan 19	12m to Jan 20	Number Diff	% Diff
KSI - All	859	818	-41	-4.8%
KSI - Fatalities	47	43	-4	-8.5%
KSI - Serious injuries	812	775	-37	-4.6%
Number of Collisions	859	804	-55	-6.4%

There was a 4.8% decrease (41 fewer) in the numbers of those Killed or Seriously Injured (KSI) in Essex for the 12 months to January 2020 compared to the 12 months to January 2019. Please note most KSIs do not result in a criminal offence of death or serious injury caused by dangerous driving and are recorded as road traffic incidents. Essex is placed sixth in its Most Similar Group (MSG) of forces for casualties per 100 million vehicle kilometres (results to December 2018).

There has been a 37.6% decrease in mobile phone crime (1,048 fewer offences) and a 32.4% increase (909 more offences) in drink/drug driving with drug driving seeing a 61.6% increase (696 more).

Due to the decrease in KSIs, a grade of Good is recommended. As of December 2018, Essex was slightly worse than the MSG average per 100 million km. However, due to the fact that more recent national figures have not been released, the current position cannot be updated. The date of the next national release has not yet been confirmed.

Monthly Performance Overview: Exceptions

Exceptions Overview

The following offence types experienced statistically significant changes for the month of January 2020: Rape and Possession of Drugs.

Rape

34.8% increase (550 more offences) for the 12 months to January 2020 compared to the 12 months to January 2019; there were statistically exceptional increases in five Districts in January 2020. There has not been an exceptional increase in Rape since July 2019.

The increase in all five Districts showing an exceptional increase was in Rape Over 16 years (the other category of Rape is Under 16). The proportion of DA Rape in the 12 months to January 2020 has increased compared to the 12 months to January 2019 (by 4.5 percentage points: 35.2% compared to 30.7%), as has the proportion of non-recent* offences (from 41.0% to 45.1%).

* Offences reported over 28 days after the committed date.

Possession of Drugs

56.0% increase (1,767 more offences) for the 12 months to January 2020 compared to the 12 months to January 2019. The Force saw a statistically exceptional increase in the month of January 2020. Cannabis has seen the largest numerical increase 1,613 (62.6% more); the proportion has also risen from 80.9% to 84.7% of all possession of drugs. This increase is likely to be attributed to an increased use of Stop and Search powers as part of pro-active police activity.

2016-2020 Police and Crime Plan Performance Indicators

Table 1

Police and Crime Plan Priorities	Police Priority Indicators	12 months to January 2019	12 months to January 2020	Number Difference	% Difference	Direction of Travel
Priority 1 - More local, visible and accessible policing	Percentage of people who have confidence in policing in Essex (internal survey Q13b) ¹	68.0	65.2	-2.8	-	Deteriorating
	<i>Confidence Interval</i> ²	1.0	1.1			
	Confidence in the local police (CSEW) ³	50.4	45.0	-5.4	-	Deteriorating
	<i>Confidence Interval</i> ²	4.3	3.5			
	Number of all crime offences	153,239	168,975	15,736	10.3	Deteriorating
Priority 2 - Crack down on anti-social behaviour	Number of anti-social behaviour incidents	46,683	41,835	-4,848	-10.4	Improving
	Percentage of people who have confidence that the policing response to ASB is improving (internal survey Q8a) ⁴	66.9	63.0	-3.9	-	Deteriorating
	<i>Confidence Interval</i> ²	1.1	1.2			
Priority 3 - Breaking the cycle of domestic abuse	Number of incidents of domestic abuse	41,028	42,807	1,779	4.3	Deteriorating
	Number of repeat incidents of domestic abuse	18,513	20,693	2,180	11.8	Deteriorating
	Percentage of domestic abuse offences solved	13.5	10.0	-3.5	-	Deteriorating
Priority 4 - Reverse the trend in serious violence	Number of homicides ⁸	14	59	45	321.4	Deteriorating
	Number of violence with injury offences (new definition from Nov 2017)	14,383	15,417	1,034	7.2	Deteriorating
Priority 5 - Tackle gangs and organised crime	Number of Organised Criminal Group disruptions ⁵	8	5	-3	-37.5	Deteriorating
	Trafficking of drugs arrests	1,493	1,972	479	32.1	Improving
Priority 6 - Protecting children & vulnerable people	Number of child abuse outcomes ⁶	210	291	81	38.6	Improving
	Child abuse solved rate	6.1	5.3	-0.9	-	Deteriorating
Priority 7 - Improve safety on our roads	Number of driving related mobile phone crime on Essex roads	2,786	1,738	-1,048	-37.6	Improving
	Number of driving under the influence of drink and/or drugs on Essex roads	2,806	3,715	909	32.4	Deteriorating
	All people killed or seriously injured (KSI) in road collisions ⁷	859	818	-41	-4.8	Improving

Please note that the number of Organised Crime Group disruptions are a comparison of January 2019 and January 2020, as there was a change in the method by which these disruptions were counted from January 2019.

Please view above table with the explanations and caveats detailed on page 13.

End Notes

¹ Question from Essex Police's own confidence and perception survey (Question 13b). Results are for the period 12 months to September 2019 versus the 12 months to September 2018.

² The confidence interval is the range +/- between where the survey result may lie. This is mainly influenced by the number of people answering the survey. The more people that answer the survey, the smaller the interval range.

³ Crime Survey for England and Wales (CSEW): 12 months to September 2019 vs. 12 months to September 2018.

⁴ Question from Essex Police's own confidence and perception survey (Question 8a). Results are for the period 12 months to September 2019 versus the 12 months to September 2018.

⁵ Please note that the number of Organised Crime Group disruptions are a comparison of January 2019 and January 2020 only due to a change in counting rules that occurred in January 2019. From January 2019, activity has been recorded rather than the number of people arrested. If there was a day of action, for example, and five people were arrested, this would formerly have counted as five disruptions, but now will count as one. The change stems from confusion over the previous guidelines, with police forces counting disruptions in different ways.

⁶ Solved outcomes are crimes that result in: charge or summons, caution, crimes taken into consideration, fixed penalty notice, cannabis warning or community resolution.

⁷ 'Killed or Seriously Injured' (KSI) refers to all people killed or seriously injured on Essex's roads, regardless of whether any criminal offences were committed. 'Causing Death/Serious Injury by Dangerous/Inconsiderate Driving' offences (detailed on p.14) refers to the number of crimes of this type.

⁸ Please note that on Wednesday 23 October 2019 the bodies of 39 Vietnamese nationals were discovered in a lorry trailer in Grays. This tragic incident is reflected in the Homicide numbers.

⁹ Recorded Crime Outcome 20 (Further action resulting from the crime report will be undertaken by another body or agency subject to the victim (or person acting on their behalf) being made aware of the action to be taken) and Outcome 22 (Diversionary, educational or intervention activity, resulting from the crime report, has been undertaken and it is not in the public interest to take any further action)

Crime Tree Data – Rolling 12 Months to January

Table 2

Force

Crime Tree Data - Rolling 12 Months to January

Top Level		Offences											Solved Outcomes											Solved Rates %										
Crime Type	% DA 2020	2019	2020	# diff.	% diff.	Z	CSS	1m Jan 19	1m Jan 20	Yr on Yr 1m % diff.	3m Jan 19	3m Jan 20	Yr on Yr 3m % diff.	2019	2020	# diff.	% diff.	1m Jan 19	1m Jan 20	Yr on Yr 1m % diff.	3m Jan 19	3m Jan 20	Yr on Yr 3m % diff.	2019	2020	% pt. diff.	Z	1m Jan 19	1m Jan 20	Yr on Yr 1m % pt. diff.	3m Jan 19	3m Jan 20	Yr on Yr 3m % pt. diff.	
Anti-Social Behaviour (Incidents)		46683	41835	-4848	-10.4	-1.6	-	-	-	-	-	-	-	22490	22744	254	1.1	2014	1826	-9.3	5850	5401	-7.7	14.7	13.5	-1.2	-1.0	15.0	12.8	-2.2	14.5	13.2	-1.3	
All Crime (excl. Action (NFB) Fraud)	17.7	153239	168975	15736	10.3	1.2	13384	14229	6.3	40373	40899	1.3	753	8731	1378	18.7	705	775	9.9	2031	2196	8.1	33.6	32.8	-0.9	0.5	36.3	36.2	-0.1	35.2	35.4	0.3		
- State Based Crime	7.5	21852	26642	4790	21.9	1.0	1944	2142	10.2	5775	6195	7.3	15137	14013	-1124	-7.4	1309	1051	-19.7	3819	3205	-16.1	11.5	9.8	-1.7	-1.4	11.4	8.7	-2.7	11.0	9.2	-1.8		
- Victim Based Crime	19.6	131387	142333	10946	8.3	1.2	11440	12087	5.7	34598	34704	0.3	7538	6909	-629	-8.3	669	567	-15.2	1968	1671	-15.1	13.9	10.7	-3.3	-1.1	13.2	10.2	-3.0	13.2	10.5	-2.7		
Victim Based Crime		Offences											Solved Outcomes											Solved Rates %										
Crime Type	% DA 2020	2019	2020	# diff.	% diff.	Z	CSS	1m Jan 19	1m Jan 20	Yr on Yr 1m % diff.	3m Jan 19	3m Jan 20	Yr on Yr 3m % diff.	2019	2020	# diff.	% diff.	1m Jan 19	1m Jan 20	Yr on Yr 1m % diff.	3m Jan 19	3m Jan 20	Yr on Yr 3m % diff.	2019	2020	% pt. diff.	Z	1m Jan 19	1m Jan 20	Yr on Yr 1m % pt. diff.	3m Jan 19	3m Jan 20	Yr on Yr 3m % pt. diff.	
Violence Against the Person	36.1	54064	64848	10784	19.9	1.3	5054	5543	9.7	14917	15905	6.6	7538	6909	-629	-8.3	669	567	-15.2	1968	1671	-15.1	13.9	10.7	-3.3	-1.1	13.2	10.2	-3.0	13.2	10.5	-2.7		
- Homicide	5.1	14	59	45	321.4	-0.4	17	1	0	-100.0	4	3	-25.0	13	53	40	307.7	1	2	100.0	3	5	66.7	92.9	89.8	-3.0	-1.0	100.0	-	-	75.0	166.7	91.7	
- Violence with Injury	35.4	14383	15417	1034	7.2	0.1	1128	1206	6.9	3583	3714	3.7	2819	2359	-460	-16.3	224	199	-11.2	672	580	-13.7	19.6	15.3	-4.3	-0.7	19.9	16.5	-3.4	18.8	15.6	-3.1		
- Death or Serious Injury caused by unlawful driving	3.7	38	27	-11	-28.9	0.5	20	2	4	100.0	11	9	-18.2	27	31	4	14.8	1	2	100.0	14	3	-78.6	71.1	114.8	43.8	-0.4	50.0	50.0	0.0	127.3	33.3	-93.9	
- Death or serious injury by dangerous driving	4.8	32	21	-11	-34.4	-	1	3	200.0	10	7	-30.0	25	21	-4	-16.0	1	1	0.0	13	2	-84.6	78.1	100.0	21.9	-	100.0	33.3	-66.7	130.0	28.6	-101.4		
- Death by careless driving (drink or drugs)	-	1	0	-1	-100.0	-	0	0	0	0	0	0	0	0	0	0	0	0	0	0	0	0	0	0	0	0	0	0	0	0	0	0	0	
- Death by careless or inconsiderate driving	0.0	4	6	2	50.0	-	0	1	0	0	2	-	1	9	8	800.0	0	0	-	1	1	0.0	25.0	150.0	125.0	-	-	0.0	-	-	50.0	-		
- Death or serious injury driving - unlicensed, disqualified, uninsured	-	0	0	0	-	-	0	0	-	0	0	-	1	0	-1	-100.0	0	0	-	0	0	-	-	-	-	-	-	-	-	-	-	-		
- Causing death by aggravated vehicle taking	-	1	0	-1	-100.0	-	1	0	-100.0	1	0	-100.0	0	1	1	-	0	0	-	0	0	0	0	0	0	0	0	0	0	0	0	0	0	
- Violence without Injury	37.9	20578	26493	5915	28.7	1.7	7	1914	2353	22.9	5720	6913	20.9	2996	2783	-213	-7.1	267	219	-18.0	800	703	-12.1	14.6	10.5	-4.1	-1.6	13.9	9.3	-4.6	14.0	10.2	-3.8	
- Stalking and Harassment	34.7	19051	22852	3801	20.0	1.0	10	2009	1980	-1.4	5599	5266	-5.9	1683	1683	0	0.0	176	145	-17.6	479	380	-20.7	8.8	7.4	-1.5	-0.7	8.8	7.3	-1.4	8.6	7.2	-1.3	
Sexual Offences	19.7	4062	5040	978	24.1	2.1	350	482	37.7	1059	1264	19.4	250	335	85	34.0	18	52	188.9	50	115	130.0	6.2	6.6	0.5	1.4	5.1	10.8	5.6	4.7	9.1	4.4		
- Rape	35.2	1581	2131	550	34.8	2.4	126	225	78.6	420	552	31.4	41	63	22	53.7	0	13	-	4	23	475.0	2.6	3.0	0.4	1.8	0.0	5.8	5.8	1.0	4.2	3.2		
- Rape - Under 16 yrs	2.8	440	529	89	20.2	1.6	5	37	51	37.8	108	132	22.2	17	34	17	100.0	0	7	-	0	13	-	3.9	6.4	2.6	2.0	0.0	13.7	13.7	0.0	9.8	9.8	
- Rape - Over 16 yrs	45.9	1141	1602	461	40.4	2.4	3	89	174	95.5	312	420	34.6	24	29	5	20.8	0	6	-	4	10	150.0	2.1	1.8	-0.3	1.0	0.0	3.4	3.4	1.3	2.4	1.1	
- Other Sexual Offences	8.3	2481	2909	428	17.3	1.4	4	224	257	14.7	639	712	11.4	209	272	63	30.1	18	39	116.7	46	92	100.0	8.4	9.4	0.9	1.6	8.0	15.2	7.1	7.2	12.9	5.7	
- Other sexual offences : Under 13	1.8	657	666	9	1.4	-	52	60	15.4	173	181	4.6	47	60	13	27.7	2	6	200.0	9	18	100.0	7.2	9.0	1.9	-	3.8	10.0	6.2	5.2	9.9	4.7		
- Other sexual offences : Under 16	1.5	677	862	185	27.3	-	73	82	12.3	193	232	20.2	66	110	44	66.7	7	26	271.4	13	44	238.5	9.7	12.8	3.0	-	9.6	31.7	22.1	6.7	19.0	12.2		
- Other sexual offences : Age 13 to 17	0.0	17	17	0	0.0	-	2	0	-100.0	3	0	-100.0	3	1	-2	-66.7	0	0	-	0	0	0	17.6	5.9	-11.8	-	0.0	-	-	0.0	-			
- Other sexual offences : Over 13	19.1	887	1056	169	19.1	-	80	99	23.8	224	254	13.4	67	68	1	1.5	7	7	0.0	17	20	17.6	7.6	6.4	-1.1	-	8.8	7.1	-1.7	7.6	7.9	0.3		
- Other sexual offences : Over 16	25.0	8	8	0	0.0	-	1	1	0.0	2	2	0.0	0	0	0	0	0	0	0	0	0	0	0.0	0.0	0.0	-	0.0	0.0	0.0	0.0	0.0	0.0		
- Other sexual offences : Not Age Specific	3.7	235	300	65	27.7	-	16	15	-6.3	44	43	-2.3	26	33	7	26.9	2	0	-100.0	7	10	42.9	11.1	11.0	-0.1	-	12.5	0.0	-12.5	15.9	23.3	7.0		
Robbery	1.6	1698	1689	-9	-0.5	-1.1	19	157	112	-28.7	472	347	-26.5	214	175	-39	-18.2	25	9	-64.0	53	35	-34.0	12.6	10.4	-2.2	-0.9	15.9	8.0	-7.9	11.2	10.1	-1.1	
- Robbery of business property	0.0	191	152	-39	-20.4	-1.1	14	19	9	-52.6	60	39	-35.0	43	33	-10	-23.3	9	4	-55.6	14	10	-28.6	22.5	21.7	-0.8	1.3	47.4	44.4	-2.9	23.3	25.6	2.3	
- Robbery of Personal Property	1.8	1507	1537	30	2.0	-0.9	6	138	103	-25.4	412	308	-25.2	171	142	-29	-17.0	16	5	-68.8	39	25	-35.9	11.3	9.2	-2.1	-1.4	11.6	4.9	-6.7	9.5	8.1	-1.3	
Theft Offences	2.4	55594	52937	-2657	-4.8	-0.2	4509	4487	-0.5	13985	12772	-8.7	5358	5099	-259	-4.8	457	311	-31.9	1318	1037	-21.3	9.6	9.6	0.0	-1.8	10.1	6.9	-3.2	9.4	8.1	-1.3		
- Burglary	1.7	12108	10524	-1584	-13.1	0.4	931	1047	12.5	3187	2770	-13.1	639	665	26	4.1	36	57	58.3	137	117	-14.6	5.3	6.3	1.0	-0.1	3.9	5.4	1.6	4.3	4.2	-0.1		
- Burglary Residential	2.3	8691	7664	-1027	-11.8	-	2	698	782	12.0	2452	2117	-13.7	383	426	43	11.2	25	29	16.0	88	56	-36.4	4.4	5.6	1.2	-	3.6	3.7	0.1	3.6	2.6	-0.9	
- Burglary Business & Community	0.0	3417	2860	-557	-16.3	-	11	233	265	13.7	735	653	-11.2	256	239	-17	-6.6	11	28	154.5	49	61	24.5	7.5	8.4	0.9	-	4.7	10.6	5.8	6.7	9.3	2.7	
- Burglary Dwelling (pre-Apr 17 definition)	3.1	6251	5449	-802	-12.8	1.0	525	614	17.0	1883	1543	-18.1	359	389	30	8.4	25	29	16.0	87	52	-40.2	5.7	7.1	1.4	-0.5	4.8	4.7	0.0	4.6	3.4	-1.3		
- Burglary Other (pre-Apr 17 definition)	0.1	5857	5075	-782	-13.4	-0.5	406	433	6.7	1304	1227	-5.9	280	276	-4	-1.4	11	28	154.5	50	65	30.0	4.8	5.4	0.7	1.4	2.7	6.5	3.8	3.8	5.3	1.5		
- Vehicle Offences (incl. Interference)	1.0	15183	15061	-122	-0.8	0.9	1255	1334	6.3	3838	3696	-3.7	326	349	23	7.1	30	20	-33.3	80	56	-30.0	2.1	2.3	0.2	-0.8	2.4	1.5	-0.9	2.1	1.5	-0.6		
- Theft from a Vehicle	0.3	7941	7559	-382	-4.8	0.7	12	630	691	9.7	1932	1903	-1.5	102	118	16	15.7	8	7	-12.5	18	15	-16.7	1.3	1.6	0.3	-0.3	1.3						

Crime Tree Data – Rolling 12 Months to January

Table 3

Victim Based: Under Reported		Offences										Solved Outcomes										Solved Rates %											
Crime Type	% DA 2020	2019	2020	# diff.	% diff.	Z	CS	1m Jan 19	1m Jan 20	Yr on Yr 1m % diff.	3m Jan 19	3m Jan 20	Yr on Yr 3m % diff.	2019	2020	# diff.	% diff.	1m Jan 19	1m Jan 20	Yr on Yr 1m % diff.	3m Jan 19	3m Jan 20	Yr on Yr 3m % diff.	2019	2020	% pt. diff.	Z	1m Jan 19	1m Jan 20	Yr on Yr 1m % pt. diff.	3m Jan 19	3m Jan 20	Yr on Yr 3m % pt. diff.
Racial/Religiously Aggravated Offences	0.9	1368	1590	222	16.2	0.1		101	116	14.9	340	355	4.4	228	251	23	10.1	28	19	-32.1	69	59	-14.5	16.7	15.8	-0.9	0.0	27.7	16.4	-11.3	20.3	16.6	-3.7
Hate Crime HO Definition	3.4	2599	2981	382	14.7	0.2		205	221	7.8	648	674	4.0	364	349	-15	-4.1	33	27	-18.2	104	89	-14.4	14.0	11.7	-2.3	-0.3	16.1	12.2	-3.9	16.0	13.2	-2.8
Domestic Abuse	100.0	24673	29957	5284	21.4	1.3		2360	2595	10.0	6952	7561	8.8	3323	2987	-336	-10.1	314	298	-5.1	860	768	-10.7	13.5	10.0	-3.5	-0.6	13.3	11.5	-1.8	12.4	10.2	-2.2
- High Risk Domestic Abuse	100.0	2398	2735	337	14.1	0.9		185	224	21.1	586	732	24.9	891	754	-137	-15.4	80	69	-13.8	215	193	-10.2	37.2	27.6	-9.6	-0.6	43.2	30.8	-12.4	36.7	26.4	-10.3
- Medium Risk Domestic Abuse	100.0	4706	5045	339	7.2	0.4		393	409	4.1	1236	1202	-2.8	1099	965	-134	-12.2	88	85	-3.4	271	241	-11.1	23.4	19.1	-4.2	-0.4	22.4	20.8	-1.6	21.9	20.0	-1.9
- Standard Risk Domestic Abuse	100.0	15911	20491	4580	28.8	1.5		1508	1760	16.7	4533	5224	15.2	1162	1113	-49	-4.2	126	127	0.8	316	306	-3.2	7.3	5.4	-1.9	-0.3	8.4	7.2	-1.1	7.0	5.9	-1.1
- No Risk Assessment	100.0	1658	1686	28	1.7	0.3		274	202	-26.3	597	403	-32.5	171	155	-16	-9.4	20	17	-15.0	58	28	-51.7	10.3	9.2	-1.1	0.2	7.3	8.4	1.1	9.7	6.9	-2.8
State Based Crime		Offences										Solved Outcomes										Solved Rates %											
Crime Type	% DA 2020	2019	2020	# diff.	% diff.	Z	CS	1m Jan 19	1m Jan 20	Yr on Yr 1m % diff.	3m Jan 19	3m Jan 20	Yr on Yr 3m % diff.	2019	2020	# diff.	% diff.	1m Jan 19	1m Jan 20	Yr on Yr 1m % diff.	3m Jan 19	3m Jan 20	Yr on Yr 3m % diff.	2019	2020	% pt. diff.	Z	1m Jan 19	1m Jan 20	Yr on Yr 1m % pt. diff.	3m Jan 19	3m Jan 20	Yr on Yr 3m % pt. diff.
Drug Offences	0.0	3905	5829	1924	49.3	2.0		465	541	16.3	1231	1547	25.7	3322	5097	1775	53.4	375	470	25.3	1061	1369	29.0	85.1	87.4	2.4	-0.1	80.6	86.9	6.2	86.2	88.5	2.3
- Trafficking of Drugs	0.0	749	906	157	21.0	1.3		83	84	1.2	228	256	12.3	459	609	150	32.7	50	40	-20.0	151	166	9.9	61.3	67.2	5.9	-1.1	60.2	47.6	-12.6	66.2	64.8	-1.4
- Possession of Drugs	0.0	3156	4923	1767	56.0	2.0		382	457	19.6	1003	1291	28.7	2863	4488	1625	56.8	325	430	32.3	910	1203	32.2	90.7	91.2	0.4	0.2	85.1	94.1	9.0	90.7	93.2	2.5
Possession of Weapons	0.8	2104	1574	-530	-25.2	-1.2		158	115	-27.2	498	421	-15.5	1417	886	-531	-37.5	104	88	-15.4	337	215	-36.2	67.3	56.3	-11.1	0.8	65.8	76.5	10.7	67.7	51.1	-16.6
Public Order	8.8	12464	15430	2966	23.8	0.5		1000	1162	16.2	3126	3352	7.2	2038	2066	28	1.4	181	157	-13.3	505	440	-12.9	16.4	13.4	-3.0	-1.0	18.1	13.5	-4.6	16.2	13.1	-3.0
Miscellaneous Crimes against Society	16.6	3379	3809	430	12.7	1.0		321	324	0.9	920	875	-4.9	576	682	106	18.4	45	60	33.3	128	172	34.4	17.0	17.9	0.9	0.2	14.0	18.5	4.5	13.9	19.7	5.7

Crime Severity Score (CSS) - Based on the ONS Crime Severity Score which replaces the Cambridge Harm Index - data are for the financial year 2018/19, (a total of 21 crime types have been ranked where scores are available).

The CSS excludes proactively generated crime detection by police i.e. State Based Crime, as these offences do not reliably measure harms experienced by the population. Rather, they measure the resources invested in catching offenders.

Yr on Yr 1m %/pt. diff. - compares the month of January 2020 with the month of January 2019.

Yr on Yr 3m %/pt. diff. - compares the three months to January 2020 with the three months to January 2019.

Z Score - Standard Score over 1.96 or under -1.96. Standard Scores are used to calculate the probability of an event occurring within a normal distribution; they are also used to compare two scores from different normal distributions (for example the number of offences per police District). In this document, Standard Scores are calculated in the following way: (current month's figure, minus the average figure per month over the previous three years) divided by the Standard Deviation of the same three year period. Standard Deviation is a measure to determine how spread out figures are from the average or "mean" a large standard deviation indicates the data is widely spread; if small, the data will be more clustered together.