

Police and Crime Plan 2016-2020

Monthly Performance Update

December 2019

National and MSG positions are to 31st October 2019 (Essex Police data are to 31st December 2019).

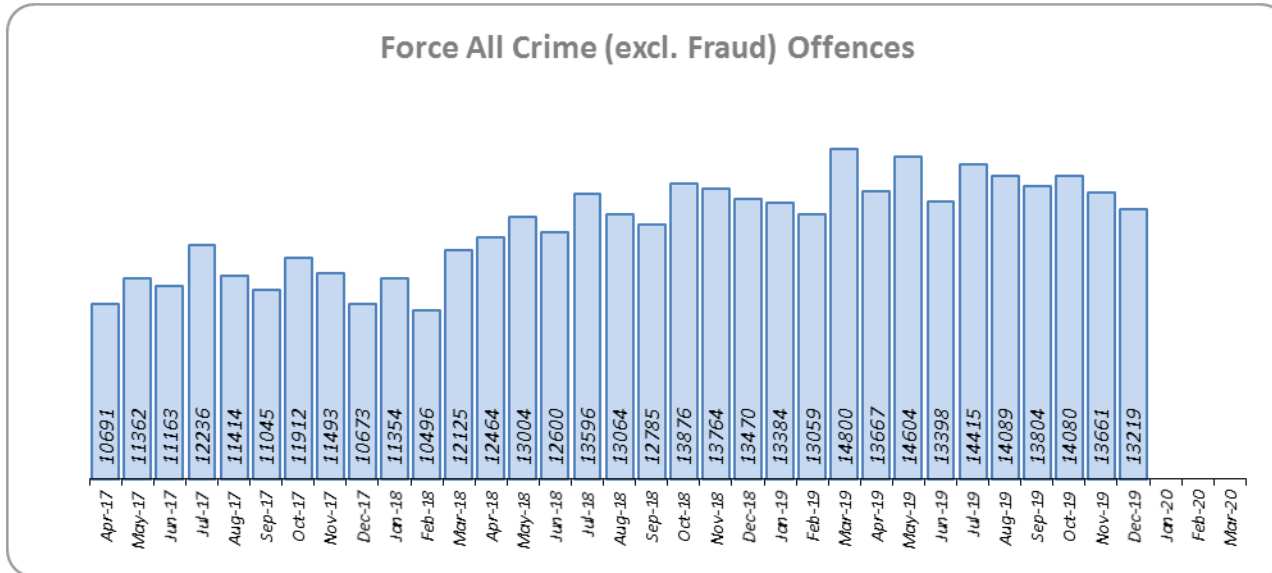


Version 1.3
Produced January 2020
Performance Analysis Unit, Essex Police
Sensitivity: Official

Executive Summary

- Three of the seven PFCC Priorities for Essex Police have been given a recommended grade of “**Good**”. Recommended grades have been determined with reference to comparisons with Essex Police’s Most Similar Group (MSG) of forces, internal Key Performance Indicators (KPIs), and professional judgement.
- Four of the seven PFCC priorities – 1 (More local, visible and accessible policing), 3 (Breaking the cycle of domestic abuse), 4 (Reverse the trend in serious violence) and 6 (Protecting children & vulnerable people) – have been given a recommended grade of “**Requires Improvement**”. None of these recommended grades have changed since the July 2019 report.
- All Crime has risen by 11.2% for the 12 months to December 2019 compared to the 12 months to December 2018. The increase in offences can, in part, be attributed to changes to Home Office Counting Rules in relation to Stalking & Harassment, as well as better Crime Data Accuracy (CDA).
- Essex Police solved 704 more crimes in the 12 months to December 2019 compared to the 12 months to December 2018; this equates to a 3.2% increase. However, the All Crime solved rate continues to decline due to the increase in the number of crimes reported. The solved rate is currently 13.6%.
- Confidence (Essex Police internal survey) is at 65.2% (results to the 12 months to September 2019). Compared to year ending September 2018, confidence in the local police has significantly decreased (deterioration of 2.8% points). Confidence in the local police from the Crime Survey of England and Wales (CSEW) places Essex eighth in its MSG, and 9.4% points below the MSG average.
- There were no statistical exceptions for the month of December 2019.

Police Priority Indicators	12 months to December 2018	12 months to December 2019	Number Difference	% Difference	Essex per 1,000 pop.	MSG Ave per 1,000 pop.	# diff.	Essex MSG Position
Number of all crime offences	151,235	168,218	16,983	11.2	92.8	78.5	14.3	8



Essex experienced a 11.2% increase in All Crime (16,983 additional offences) for the 12 months to December 2019 compared to the 12 months to December 2018. Essex is eighth in its Most Similar Group of forces (MSG) for crime per 1,000 population.

The increase in offences can, in part, be attributed to changes to Home Office Counting Rules in relation to Stalking & Harassment, as well as better Crime Data Accuracy (CDA).

Essex was graded as Outstanding in its recent HMICFRS Crime Data Integrity (CDI) inspection. Essex Police is only the third force of the 41 that have been judged as outstanding on the first visit in this inspection programme.

Priority 1 - More local, visible and accessible policing

Grade: **Requires Improvement**

Police Priority Indicators	12 months to Sept 2018	12 months to Sept 2019	% pt. Difference	% Difference
Percentage of people who have confidence in policing in Essex (internal survey Q13b)	68.0	65.2	-2.8	-
<i>Confidence Interval</i>	1.0	1.1		

Police Priority Indicators	12 months to June 2018	12 months to June 2019	Number Difference	% Difference	Essex	MSG Ave	# diff.	Essex MSG Position
Confidence in the local police (Crime Survey of England and Wales)	50.1	46.7	-3.4	-	46.7	56.1	-9.4	8
<i>Confidence Interval</i>	4.2	4.1			4.1	1.5		

Confidence (Essex Police internal survey) is at 65.2% (results to the 12 months to September 2019). Compared to year ending September 2018, confidence in the local police has significantly decreased (deterioration of 2.8% points).

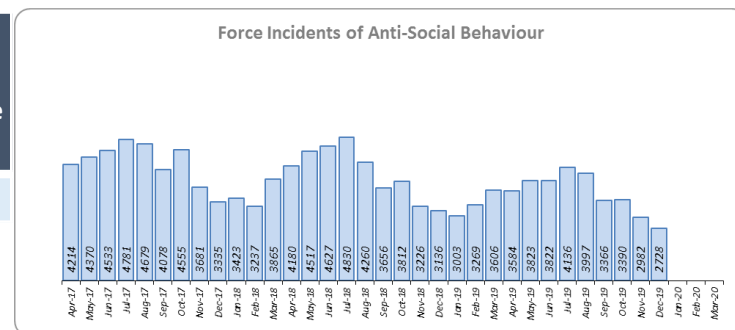
Confidence in the local police from the Crime Survey of England and Wales (CSEW) places Essex eighth in its MSG, and 9.4% points below the MSG average. However, the sample size from this survey is not representative at a sufficiently small scale to measure local issues. The Essex Police internal survey (results detailed above) was therefore introduced to achieve a more accurate local measure with a small margin of error. The results from the Essex Police survey show that the Force performs significantly better on confidence in local policing than the results from the CSEW, which asks the same question.

Due to the fact that Essex is 8th in its MSG for both crime per 1,000 population and for confidence in local police (CSEW), and that the Essex Police internal survey shows a deterioration in confidence in local police, a grade of Requires Improvement is recommended.

Priority 2 - Crack down on anti-social behaviour

Grade: **Good**

Police Priority Indicators	12 months to December 2018	12 months to December 2019	Number Difference	% Difference
Number of anti-social behaviour incidents	47,101	41,975	-5,126	-10.9



Police Priority Indicators	12 months to June 2018	12 months to June 2019	Number Difference	% Difference	Essex	MSG Ave	# diff.	Essex MSG Position
ASB Perception:- Perception that ASB is a problem (CSEW)	9.1	4.2	-4.9	-	4.2	5.9	-1.7	3
<i>Confidence Interval</i>	5.3	2.8			2.8	1.6		

Police Priority Indicators	12 months to Sept 2018	12 months to Sept 2019	% pt. Difference	% Difference
Percentage of people who have confidence Essex Police and the organisations they work with are dealing with ASB (internal survey Q8a)	66.9	63.0	-3.9	-
<i>Confidence Interval</i>	1.1	1.2		

Essex experienced a 10.9% reduction (5,126 fewer) in Anti-Social Behaviour (ASB) incidents for the 12 months to December 2019 compared to the 12 months to December 2018. Part of this decrease is due to better Crime Data Accuracy (CDA); more incidents reported as ASB are now being correctly recorded as crimes. Some of the decrease may also be due to people reporting incidents directly to the Council and Housing Authorities.

ASB Perception (from the Crime Survey of England and Wales) in Essex experienced a 4.9% point decrease (improvement). Essex is 1.7% points better than the MSG average; this places Essex third in its Most Similar Group of forces. However, results of Essex's internal survey significantly decreased in relation to how well Essex and the organisations they work with deal with ASB (deterioration of 3.9% points).

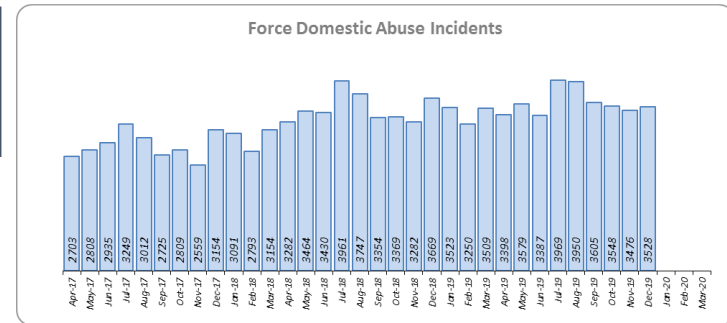
Due to the reduction in ASB incidents, and the fact that ASB Perception is better than the MSG average, a grade of Good is recommended.

Priority 3 - Breaking the cycle of domestic abuse

Grade: **Requires Improvement**

Police Priority Indicators	12 months to December 2018	12 months to December 2019	Number Difference	% Difference
Number of incidents of domestic abuse	40,596	42,722	2,126	5.2
Number of repeat incidents of domestic abuse	18,215	20,558	2,343	12.9

Police Priority Indicators	12 months to December 2018	12 months to December 2019	Number Difference	% Difference
Percentage of domestic abuse offences solved	13.7	10.1	-3.6	-
Total domestic abuse offences solved	3,294	3,005	-289	-8.8
High Risk domestic abuse offences solved	880	765	-115	-13.1
Medium Risk domestic abuse offences solved	1,110	968	-142	-12.8
Standard Risk domestic abuse offences solved	1,140	1,109	-31	-2.7



Essex experienced a 5.2% increase (2,126 more) in Domestic Abuse incidents and a 12.9% increase (2,343 more) in repeat incidents of Domestic Abuse for the 12 months to December 2019 compared to the 12 months to December 2018. The increase in crime, in part, can be attributed to better Crime Data Accuracy (CDA), and changes to Home Office Counting Rules (HOCCR) in relation to Stalking & Harassment.

The Domestic Abuse solved rate fell by 3.6% points to 10.1% during the same period. The number of offences solved has also fallen by 289 offences.

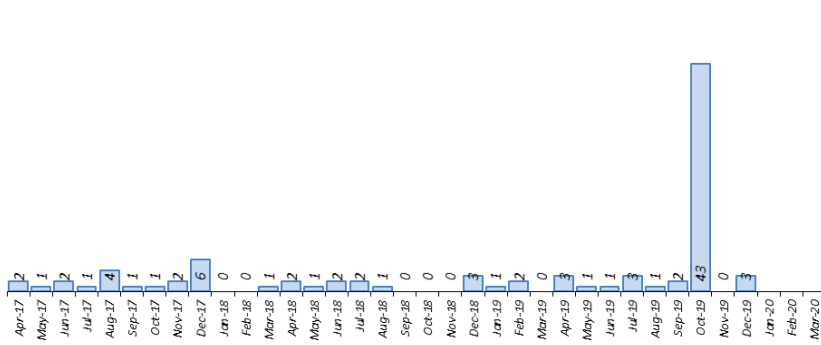
Due to the increase in repeat incidents and the decrease in both the solved volume and the solved rate, a grade of Requires Improvement is recommended.

Priority 4 - Reverse the trend in serious violence

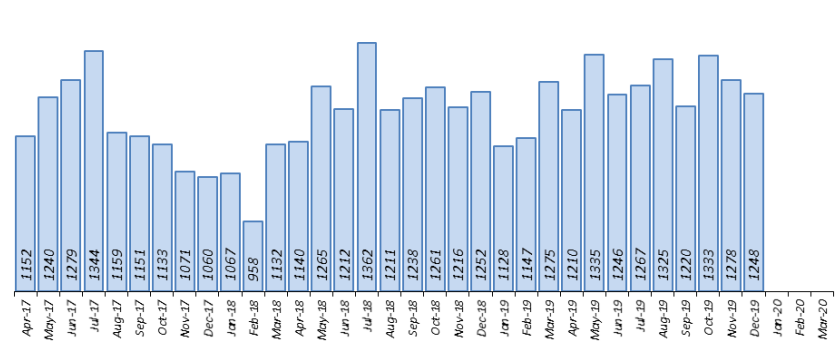
Grade: **Requires Improvement**

Police Priority Indicators	12 months to December 2018	12 months to December 2019	Number Difference	% Difference	Essex per 1,000 pop.	MSG Ave per 1,000 pop.	# diff.	Essex MSG Position
Number of homicides	13	61	48	369.2	0.034	0.011	0.023	8
Number of violence with injury offences (new definition from Nov 2017)	14,325	15,360	1,035	7.2	8.435	8.390	0.045	5

Force Homicide Offences



Force Violence with Injury Offences



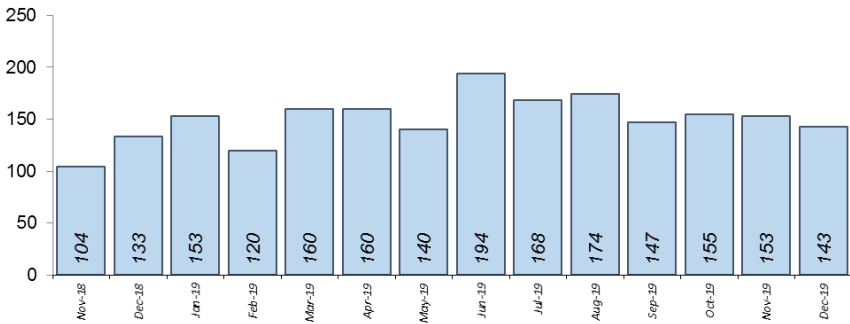
Essex saw an increase of 48 Homicides (to 61 offences) for the 12 months to December 2019 compared to the 12 months to December 2018. This includes the tragic incident where 39 Vietnamese nationals were discovered in a lorry trailer in Grays. Essex is eighth in its Most Similar Group (MSG) of forces for offences per 1,000 population, and is higher than the MSG average.

There was a 7.2% increase (1,035 more offences) in Violence with Injury. Essex is fifth in its MSG for offences per 1,000 population, and is slightly worse than the MSG average. The increase in this offence is, in part, due to the rise in domestic abuse related Violence with Injury (15.2% increase, 720 more offences); 35.5% of Violence with Injury is domestic abuse-related.

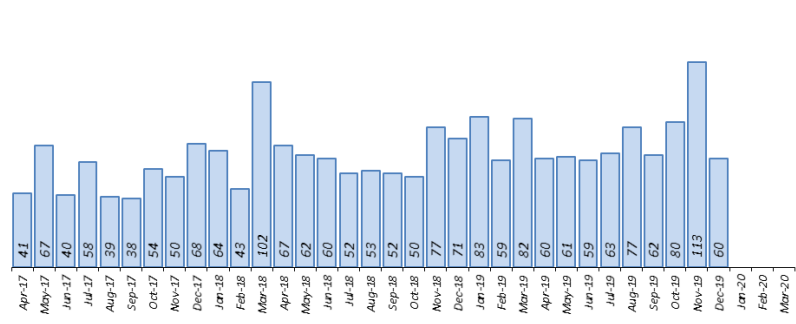
Due to the fact that Essex continues to experience an increase in Violence with Injury, a grade of Requires Improvement is recommended.

Police Priority Indicators	12 months to December 2018	12 months to December 2019	Number Difference	% Difference
Number of Organised Criminal Group disruptions*	108	96	-	-
Trafficking of drugs arrests	1,430	1,936	506	35.4

Trafficking of Drug Arrests



Force Trafficking of Drugs Offences



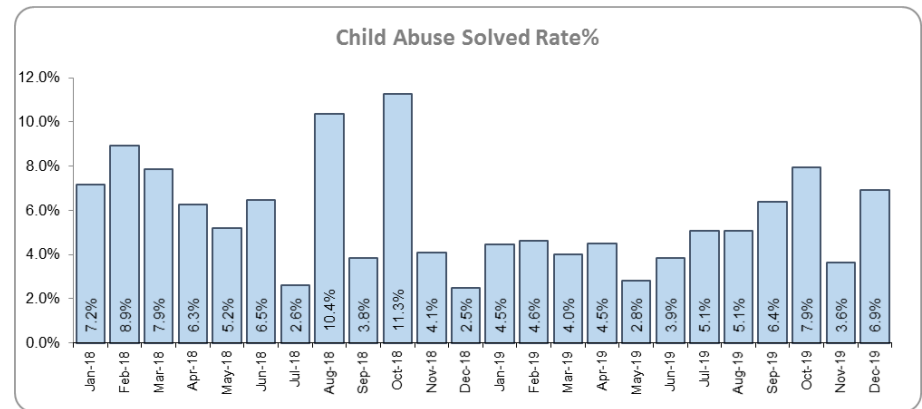
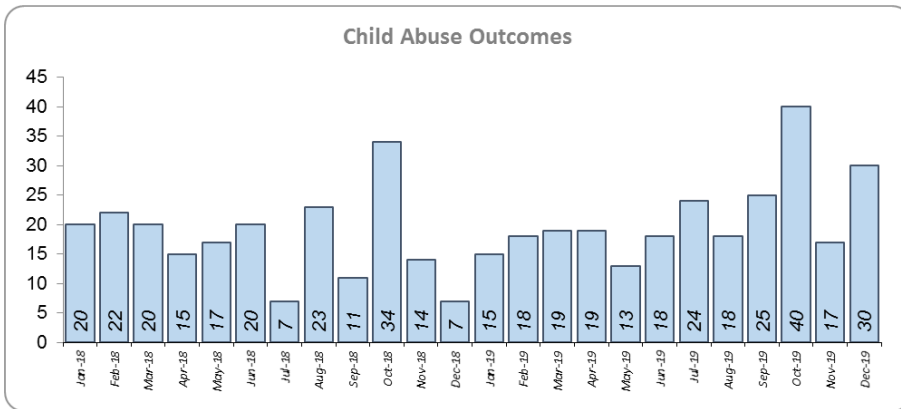
96 Organised Crime Group (OCG) disruptions were conducted in Essex between January 2019 and December 2019. * In January 2019 there was a change in the way in which the number of OCG disruptions were counted; this follows National Crime Agency (NCA) and Eastern Region Special Operations Unit (ERSOU) guidance to ensure that all forces record disruptions in the same way. Previous data periods are not directly comparable but are included for completeness.

Trafficking of drug arrests, which are also as a result of police proactivity, increased by 35.4% (506 more) for the 12 months to December 2019 compared to the 12 months to December 2018. In the same period, there has also been 25.0% more trafficking of drugs offences recorded (182 more offences to 911).

Due to the increase in Trafficking of Drug Arrests, a grade of Good is recommended.

*Please note that the number of Organised Crime Group disruptions are not directly comparable due to a change in counting rules that occurred in January 2019. Direct comparisons will start to become available from next month's (February 2020) Monthly Performance Report (when January 2020 can be compared to January 2019).

Police Priority Indicators	12 months to December 2018	12 months to December 2019	Number Difference	% Difference
Number of child abuse outcomes	215	259	44	20.5
Child abuse solved rate	6.4	4.9	-1.5	-



There was a 20.5% increase (44 more) in the number of positive solved Child Abuse Outcomes in the 12 months to December 2019 compared to the 12 months to December 2018.

56.3% more offences (an additional 1,890) were recorded in the 12 months to December 2019 compared to the 12 months to December 2018. There was a 1.5% point decrease in the solved rate (from 6.4% to 4.9%).

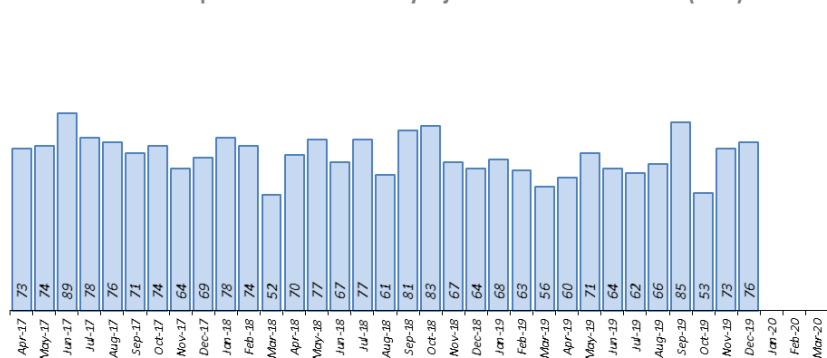
In spite of the increase in the number of Child Abuse solved outcomes, there is still a reduction in the solved rate to less than 5.0%. A grade of Requires Improvement is therefore recommended.

Priority 7 - Improve safety on our roads

Grade: **Good**

Police Priority Indicators	12 months to December 2018	12 months to December 2019	Number Difference	% Difference	Essex (per 100 million km)	MSG Ave (per 100 million km)	# diff.	Essex MSG Position
All people killed or seriously injured (KSI) in road collisions	865	820	-45	-5.2	1.287	1.102	0.185	6
Number of driving related mobile phone crime on Essex roads	2,817	1,855	-962	-34.1				
Number of driving under the influence of drink and/or drugs on Essex roads	2,703	3,711	1,008	37.3				
<i>Number of driving under the influence of drink on Essex roads</i>	<i>1,342</i>	<i>1,467</i>	<i>125</i>	<i>9.3</i>				
<i>Number of driving under the influence of drugs on Essex roads</i>	<i>1,039</i>	<i>1,845</i>	<i>806</i>	<i>77.6</i>				
<i>Number of Failure to Provide samples</i>	<i>322</i>	<i>399</i>	<i>77</i>	<i>23.9</i>				

Force People Killed or Seriously Injured in Road Collisions (KSIs)



Rolling 12 months	12m to Dec 18	12m to Dec 19	Number Diff	% Diff
KSI - All	865	820	-45	-5.2%
KSI - Fatalities	48	44	-4	-8.3%
KSI - Serious injuries	817	776	-41	-5.0%
Number of Collisions	865	809	-56	-6.5%

There was a 5.2% decrease (45 fewer) in the numbers of those Killed or Seriously Injured (KSI) in Essex for the 12 months to December 2019 compared to the 12 months to December 2018. Please note most KSIs do not result in a criminal offence of death or serious injury caused by dangerous driving and are recorded as road traffic incidents. Essex is placed sixth in its Most Similar Group (MSG) of forces for casualties per 100 million vehicle kilometres (results to December 2018).

There has been a 34.1% decrease in mobile phone crime (962 fewer offences) and a 37.3% increase (1,008 more offences) in drink/drug driving with drug driving seeing a 77.6% increase (806 more).

Due to the decrease in KSIs, a grade of Good is recommended. As of December 2018, Essex was slightly worse than the MSG average per 100 million km. However, due to the fact that more recent national figures have not been released, the current position cannot be updated.

2016-2020 Police and Crime Plan Performance Indicators

Table 1

Police and Crime Plan Priorities	Police Priority Indicators	12 months to December 2018	12 months to December 2019	Number Difference	% Difference	Direction of Travel
Priority 1 - More local, visible and accessible policing	Percentage of people who have confidence in policing in Essex (internal survey Q13b) ¹	68.0	65.2	-2.8	-	Deteriorating
	<i>Confidence Interval</i> ²	1.0	1.1			
	Confidence in the local police (CSEW) ³	50.1	46.7	-3.4	-	Stable
	<i>Confidence Interval</i> ²	4.2	4.1			
	Number of all crime offences	151,235	168,218	16,983	11.2	Deteriorating
Priority 2 - Crack down on anti-social behaviour	Number of anti-social behaviour incidents	47,101	41,975	-5,126	-10.9	Improving
	Percentage of people who have confidence that the policing response to ASB is improving (internal survey Q8a) ⁴	66.9	63.0	-3.9	-	Deteriorating
	<i>Confidence Interval</i> ²	1.1	1.2			
Priority 3 - Breaking the cycle of domestic abuse	Number of incidents of domestic abuse	40,596	42,722	2,126	5.2	Deteriorating
	Number of repeat incidents of domestic abuse	18,215	20,558	2,343	12.9	Deteriorating
	Percentage of domestic abuse offences solved	13.7	10.1	-3.6	-	Deteriorating
Priority 4 - Reverse the trend in serious violence	Number of homicides ⁸	13	61	48	369.2	Deteriorating
	Number of violence with injury offences (new definition from Nov 2017)	14,325	15,360	1,035	7.2	Deteriorating
Priority 5 - Tackle gangs and organised crime	Number of Organised Criminal Group disruptions ⁵	108	96	-	-	-
	Trafficking of drugs arrests	1,430	1,936	506	35.4	Improving
Priority 6 - Protecting children & vulnerable people	Number of child abuse outcomes ⁶	215	259	44	20.5	Improving
	Child abuse solved rate	6.4	4.9	-1.5	-	Deteriorating
Priority 7 - Improve safety on our roads	Number of driving related mobile phone crime on Essex roads	2,817	1,855	-962	-34.1	Improving
	Number of driving under the influence of drink and/or drugs on Essex roads	2,703	3,711	1,008	37.3	Deteriorating
	All people killed or seriously injured (KSI) in road collisions ⁷	865	820	-45	-5.2	Improving

Please note that the number of Organised Crime Group disruptions are not directly comparable due to a change in counting rules that occurred in January 2019. Direct comparisons will start to become available from the February 2020 Monthly Performance Report (when January 2020 can be compared to January 2019).

Please view above table with the explanations and caveats detailed on page 12.

End Notes

¹ Question from Essex Police's own confidence and perception survey (Question 13b). Results are for the period 12 months to September 2019 versus the 12 months to September 2018.

² The confidence interval is the range +/- between where the survey result may lie. This is mainly influenced by the number of people answering the survey. The more people that answer the survey, the smaller the interval range.

³ Crime Survey for England and Wales (CSEW): 12 months to June 2019 vs. 12 months to June 2018.

⁴ Question from Essex Police's own confidence and perception survey (Question 8a). Results are for the period 12 months to September 2019 versus the 12 months to September 2018.

⁵ From January 2019, activity has been recorded rather than the number of people arrested. If there was a day of action, for example, and five people were arrested, this would formerly have counted as five disruptions, but now will count as one. The change stems from confusion over the previous guidelines, with police forces counting disruptions in different ways. The data are for January 2019 to December 2019. Previous data periods are not directly comparable but have been included for completeness.

⁶ Solved outcomes are crimes that result in: charge or summons, caution, crimes taken into consideration, fixed penalty notice, cannabis warning or community resolution.

⁷ 'Killed or Seriously Injured' (KSI) refers to all people killed or seriously injured on Essex's roads, regardless of whether any criminal offences were committed. 'Causing Death/Serious Injury by Dangerous/Inconsiderate Driving' offences (detailed on p.14) refers to the number of crimes of this type.

⁸ Please note that on Wednesday 23 October 2019 the bodies of 39 Vietnamese nationals were discovered in a lorry trailer in Grays. This tragic incident is reflected in the Homicide numbers.

Crime Tree Data – Rolling 12 Months to December

Force

Crime Tree Data - Rolling 12 Months to December

Table 2

Top Level		Offences											Solved Outcomes									Solved Rates %												
Crime Type	% DA 2019	2018	2019	# diff.	% diff.	Z	CS5	1m Dec 18	1m Dec 19	Yr on Yr 1m % diff.	3m Dec 18	3m Dec 19	Yr on Yr 3m % diff.	2018	2019	# diff.	% diff.	1m Dec 18	1m Dec 19	Yr on Yr 1m % diff.	3m Dec 18	3m Dec 19	Yr on Yr 3m % diff.	2018	2019	% pt. diff.	Z	1m Dec 18	1m Dec 19	Yr on Yr 1m % pt. diff.	3m Dec 18	3m Dec 19	Yr on Yr 3m % pt. diff.	
1	Anti-Social Behaviour (Incidents)	-	47101	41975	-5126	-10.9	-1.9	-	-	-	-	-	-	22223	22927	704	3.2	1857	1658	-10.7	5952	5237	-12.0	14.7	13.6	-1.1	-1.1	13.8	12.5	-1.2	14.5	12.8	-1.7	
2	All Crime (excl.Action (NFIB) Fraud)	17.7	151235	168218	16983	11.2	0.5	13470	13219	-1.9	40970	40967	0.0	7230	8664	1434	19.8	614	659	7.3	2055	2084	1.4	33.8	32.8	-1.0	-0.2	32.9	34.0	1.2	35.6	33.5	-2.1	
3	- State Based Crime	7.5	21388	26449	5061	23.7	0.4	1869	1936	3.6	5775	6221	7.7	7230	8664	1434	19.8	614	659	7.3	2055	2084	1.4	33.8	32.8	-1.0	-0.2	32.9	34.0	1.2	35.6	33.5	-2.1	
4	- Victim Based Crime	19.6	129847	141769	11922	9.2	0.5	11601	11283	-2.7	35195	34746	-1.3	14993	14263	-730	-4.9	1243	999	-19.6	3897	3153	-19.1	11.5	10.1	-1.5	-1.3	10.7	8.9	-1.9	11.1	9.1	-2.0	
Victim Based Crime		Offences											Solved Outcomes									Solved Rates %												
Crime Type	% DA 2019	2018	2019	# diff.	% diff.	Z	CS5	1m Dec 18	1m Dec 19	Yr on Yr 1m % diff.	3m Dec 18	3m Dec 19	Yr on Yr 3m % diff.	2018	2019	# diff.	% diff.	1m Dec 18	1m Dec 19	Yr on Yr 1m % diff.	3m Dec 18	3m Dec 19	Yr on Yr 3m % diff.	2018	2019	% pt. diff.	Z	1m Dec 18	1m Dec 19	Yr on Yr 1m % pt. diff.	3m Dec 18	3m Dec 19	Yr on Yr 3m % pt. diff.	
5	Violence Against the Person	36.2	52669	64413	11744	22.3	1.0	5098	5227	2.5	14794	16039	8.4	7511	7008	-503	-6.7	665	547	-17.7	2060	1632	-20.8	14.3	10.9	-3.4	-1.1	13.0	10.5	-2.6	13.9	10.2	-3.7	
6	- Homicide	6.6	13	61	48	369.2	0.0	17	3	3	0.0	3	46	1433.3	12	51	39	325.0	2	2	0.0	2	44	2100.0	92.3	83.6	-8.7	0.2	66.7	66.7	0.0	66.7	95.7	29.0
7	- Violence with Injury	35.5	14325	15360	1035	7.2	0.5	1252	1248	-0.3	3723	3870	3.9	2862	2387	-475	-16.6	234	200	-14.5	714	565	-20.9	20.0	15.5	-4.4	-0.9	18.7	16.0	-2.7	19.2	14.6	-4.6	
8	- Death or Serious Injury caused by unlawful driving	3.8	42	26	-16	-38.1	0.5	20	2	4	100.0	15	8	-46.7	28	28	0	0.0	9	1	-88.9	15	9	-40.0	66.7	107.7	41.0	-0.6	450.0	25.0	-425.0	100.0	112.5	12.5
9	- Death or serious injury by dangerous driving	5.0	36	20	-16	-44.4	-	2	3	50.0	15	6	-60.0	27	18	-9	-33.3	9	0	-100.0	14	5	-64.3	75.0	90.0	15.0	-	450.0	0.0	-450.0	93.3	83.3	-10.0	
10	- Death by careless driving (drink or drugs)	-	1	0	-1	-100.0	-	0	0	-	0	0	-	0	0	0	-	0	0	-	0	0	-	0.0	-	-	-	-	-	-	-	-	-	-
11	- Death by careless or inconsiderate driving	0.0	5	5	0	0.0	-	0	1	-	0	2	-	1	9	8	-8	-800.0	0	1	-	1	3	200.0	20.0	180.0	160.0	-	100.0	-	-	-	150.0	-
12	- Death or serious injury driving - unlicensed, disqualified, uninsured	-	0	0	0	0.0	-	0	0	-	0	0	-	0	0	0	-	0	0	-	0	0	-	0.0	-	-	-	-	-	-	-	-	-	
13	- Causing death by aggravated vehicle taking	0.0	0	1	1	-	-	0	0	-	0	0	-	0	0	1	1	-	0	0	-	0	1	-	100.0	-	-	-	-	-	-	-	-	-
14	- Violence without injury	37.9	20097	26082	5985	29.8	1.7	7	2008	2328	15.9	5597	6868	22.7	2984	2830	-154	-5.2	270	235	-13.0	822	675	-17.9	14.8	10.9	-4.0	-1.4	13.4	10.1	-3.4	14.7	9.8	-4.9
15	- Stalking and Harassment	34.8	18192	22884	4692	25.8	0.4	10	1833	1644	-10.3	5456	5247	-3.8	1625	1712	87	5.4	150	109	-27.3	507	339	-33.1	8.9	7.5	-1.5	-0.9	8.2	6.6	-1.6	9.3	6.5	-2.8
18	Sexual Offences	19.3	4029	4894	865	21.5	0.6	329	386	17.3	1088	1249	13.0	247	298	51	20.6	14	34	142.9	63	107	69.8	6.1	6.1	0.0	0.7	4.3	8.8	4.6	5.8	8.7	2.9	
19	- Rape	34.8	1565	2044	479	30.6	0.7	133	159	19.5	445	524	17.8	42	50	8	19.0	1	4	300.7	7	16	128.6	2.7	2.4	-0.2	-0.2	0.8	2.5	1.8	1.6	3.1	1.5	
20	- Rape - Under 16 yrs	2.5	440	519	79	18.0	0.4	5	27	41	51.9	106	133	25.5	16	27	11	68.8	0	2	-	1	8	700.0	3.6	5.2	1.6	0.1	0.0	4.9	4.9	0.0	6.0	5.1
21	- Rape - Over 16 yrs	45.8	1125	1525	400	35.6	0.7	3	106	118	11.3	339	391	15.3	26	23	-3	-11.5	1	2	100.0	6	8	33.3	2.3	1.5	-0.8	-0.4	0.9	1.7	0.8	1.8	2.0	0.3
22	- Other Sexual Offences	8.2	2464	2850	386	15.7	0.5	4	196	227	15.8	643	705	9.6	205	248	43	21.0	13	30	130.8	56	91	62.5	8.3	8.7	0.4	1.0	6.6	13.2	6.6	8.7	12.9	4.2
23	- Other sexual offences : Under 13	1.5	655	649	-6	-0.9	-	47	64	36.2	166	180	8.4	48	56	8	16.7	3	10	233.3	18	28	55.6	7.3	8.6	1.3	-	6.4	15.6	9.2	10.8	15.6	4.7	
24	- Other sexual offences : Under 16	1.7	666	846	180	27.0	-	54	83	53.7	193	204	5.7	62	91	29	46.8	2	11	450.0	17	28	64.7	9.3	10.8	1.4	-	3.7	13.3	9.5	8.8	13.7	4.9	
25	- Other sexual offences : Age 13 to 17	0.0	19	20	1	5.3	-	0	0	-	4	3	-25.0	4	1	-3	-75.0	0	0	-	1	0	-100.0	21.1	5.0	-16.1	-	-	-	-	25.0	0.0	-25.0	
26	- Other sexual offences : Over 13	19.2	882	1027	145	16.4	-	85	68	-20.0	229	266	16.2	67	65	-2	-3.0	5	5	0.0	14	21	50.0	7.6	6.3	-1.3	-	5.9	7.4	1.5	6.1	7.9	1.8	
27	- Other sexual offences : Over 16	12.5	8	8	0	0.0	-	0	0	-	2	2	0.0	0	0	0	-	0	0	-	0	0	-	0.0	0.0	0.0	-	-	-	-	-	0.0	0.0	
28	- Other sexual offences : Not Age Specific	3.7	234	300	66	28.2	-	10	12	20.0	49	50	2.0	24	35	11	45.8	3	4	33.3	6	14	133.3	10.3	11.7	1.4	-	30.0	33.3	3.3	12.2	28.0	15.8	
29	Robbery	1.5	1673	1734	61	3.6	-1.0	165	114	-30.9	476	351	-26.3	211	193	-18	-8.5	15	6	-60.0	47	39	-17.0	12.6	11.1	-1.5	-1.5	9.1	5.3	-3.8	9.9	11.1	1.2	
30	- Robbery of business property	0.0	190	163	-27	-14.2	0.8	14	25	18	-28.0	52	39	-25.0	41	40	-1	-2.4	2	3	50.0	7	8	14.3	21.6	24.5	3.0	-0.4	8.0	16.7	8.7	13.5	20.5	7.1
31	- Robbery of Personal Property	1.7	1483	1571	88	5.9	-1.2	6	140	96	-31.4	424	312	-26.4	170	153	-17	-10.0	13	3	-76.9	40	31	-22.5	11.5	9.7	-1.7	-1.8	9.3	3.1	-6.2	9.4	9.9	0.5
32	Theft Offences	2.4	55565	52995	-2570	-4.6	-1.5	4577	4107	-10.3	14680	12705	-13.5	5255	5241	-14	-0.3	403	298	-26.1	1284	1051	-18.1	9.5	9.9	0.4	-1.6	8.8	7.3	-1.5	8.7	8.3	-0.5	
33	- Burglary	1.6	12273	10418	-1855	-15.1	-1.3	1044	815	-21.9	3440	2529	-26.5	651	649	-2	-0.3	48	29	-39.6	158	88	-44.3	5.3	6.2	0.9	-0.9	4.6	3.6	-1.0	4.6	3.5	-1.1	
34	- Burglary Residential	2.2	8808	7588	-1220	-13.9	-	2	826	625	-24.3	2620	1951	-25.5	394	424	30	7.6	34	14	-58.8	97	50	-48.5	4.5	5.6	1.1	-	4.1	2.2	-1.9	3.7	2.6	-1.1
35	- Burglary Business & Community	0.0	3465	2830	-635	-18.3	-	11	218	190	-12.8	820	578	-29.5	257	225	-32	-12.5	14	15	7.1	61	38	-37.7	7.4	8.0	0.5	-	6.4	7.9	1.5	7.4	6.6	-0.9
36	- Burglary Dwelling (pre-Apr 17 definition)	3.1	6325	5371	-954	-15.1	-0.6	659	470	-28.7	1944	1354	-30.3	368	387	19	5.2	34	11	-67.6	94	45	-52.1	5.8	7.2	1.4	-1.1	5.2	2.3	-2.8	4.8	3.3	-1.5	
37	- Burglary Other (pre-Apr 17 definition)	0.1	5948	5047	-901	-15.1	-1.8	385	345	-10.4	1496	1175	-21.5	283	262	-21	-7.4	14	18	28.6	64	43	-32.8	4.8	5.2	0.4	0.6	3.6	5.2	1.6	4.3	3.7	-0.6	
38	- Vehicle Offences (incl. Interference)	1.0	15218	14986	-232	-1.5	-0.6	1304	1178	-9.7	4036	3640	-9.8	313	355	42	13.4	18	12	-33.3	77	64	-16.9	2.1	2.4	0.3	-1.3	1.4	1.0	-0.4	1.9	1.8	-0.1	
39	- Theft from a Vehicle	0.3	8077	7494																														

Crime Tree Data – Rolling 12 Months to December

Table 3

Victim Based: Under Reported		Offences											Solved Outcomes								Solved Rates %												
Crime Type	% DA 2019	2018	2019	# diff.	% diff.	Z	1m Dec 18	1m Dec 19	Yr on Yr 1m % diff.	3m Dec 18	3m Dec 19	Yr on Yr 3m % diff.	2018	2019	# diff.	% diff.	1m Dec 18	1m Dec 19	Yr on Yr 1m % diff.	3m Dec 18	3m Dec 19	Yr on Yr 3m % diff.	2018	2019	% pt. diff.	Z	1m Dec 18	1m Dec 19	Yr on Yr 1m % pt. diff.	3m Dec 18	3m Dec 19	Yr on Yr 3m % pt. diff.	
50	Racial/Religiously Aggravated Offences	1.0	1353	1571	218	16.1	0.2	113	116	2.7	367	381	3.8	207	262	55	26.6	24	17	-29.2	55	55	0.0	15.3	16.7	1.4	-0.4	21.2	14.7	-6.6	15.0	14.4	-0.6
51	Hate Crime HO Definition	3.6	2546	2965	419	16.5	0.7	222	243	9.5	675	716	6.1	346	354	8	2.3	33	32	-3.0	102	88	-13.7	13.6	11.9	-1.7	0.0	14.9	13.2	-1.7	15.1	12.3	-2.8
52	Domestic Abuse	100.0	23973	29726	5753	24.0	1.2	2453	2505	2.1	6726	7536	12.0	3294	3005	-289	-8.8	314	236	-24.8	853	723	-15.2	13.7	10.1	-3.6	-1.1	12.8	9.4	-3.4	12.7	9.6	-3.1
53	- High Risk Domestic Abuse	100.0	2377	2706	329	13.8	1.2	197	234	18.8	607	795	31.0	880	765	-115	-13.1	69	57	-17.4	209	195	-6.7	37.0	28.3	-8.8	-1.3	35.0	24.4	-10.7	34.4	24.5	-9.9
54	- Medium Risk Domestic Abuse	100.0	4677	5024	347	7.4	0.4	423	408	-3.5	1207	1205	-0.2	1110	968	-142	-12.8	105	76	-27.6	288	224	-22.2	23.7	19.3	-4.5	-0.9	24.8	18.6	-6.2	23.9	18.6	-5.3
55	- Standard Risk Domestic Abuse	100.0	15338	20232	4894	31.9	1.3	1530	1692	10.6	4326	5107	18.1	1140	1109	-31	-2.7	115	97	-15.7	288	272	-5.6	7.4	5.5	-2.0	-0.9	7.5	5.7	-1.8	6.7	5.3	-1.3
56	- No Risk Assessment	100.0	1581	1764	183	11.6	0.0	303	171	-43.6	586	429	-26.8	164	163	-1	-0.6	25	6	-76.0	68	32	-52.9	10.4	9.2	-1.1	-0.7	8.3	3.5	-4.7	11.6	7.5	-4.1
State Based Crime		Offences											Solved Outcomes								Solved Rates %												
Crime Type	% DA 2019	2018	2019	# diff.	% diff.	Z	1m Dec 18	1m Dec 19	Yr on Yr 1m % diff.	3m Dec 18	3m Dec 19	Yr on Yr 3m % diff.	2018	2019	# diff.	% diff.	1m Dec 18	1m Dec 19	Yr on Yr 1m % diff.	3m Dec 18	3m Dec 19	Yr on Yr 3m % diff.	2018	2019	% pt. diff.	Z	1m Dec 18	1m Dec 19	Yr on Yr 1m % pt. diff.	3m Dec 18	3m Dec 19	Yr on Yr 3m % pt. diff.	
57	Drug Offences	0.0	3762	5750	1988	52.8	1.3	366	461	26.0	1122	1449	29.1	3214	5006	1792	55.8	314	412	31.2	1011	1294	28.0	85.4	87.1	1.6	0.1	85.8	89.4	3.6	90.1	89.3	-0.8
58	- Trafficking of Drugs	0.0	729	911	182	25.0	-0.1	71	60	-15.5	194	260	34.0	454	620	166	36.6	50	60	20.0	145	181	24.8	62.3	68.1	5.8	2.2	70.4	100.0	29.6	74.7	69.6	-5.1
59	- Possession of Drugs	0.0	3033	4839	1806	59.5	1.5	295	401	35.9	928	1189	28.1	2760	4386	1626	58.9	264	352	33.3	866	1113	28.5	91.0	90.6	-0.4	-0.5	89.5	87.8	-1.7	93.3	93.6	0.3
60	Possession of Weapons	0.9	2096	1621	-475	-22.7	-0.5	166	139	-16.3	513	430	-16.2	1444	903	-541	-37.5	102	66	-35.3	373	188	-49.6	68.9	55.7	-13.2	-1.5	61.4	47.5	-14.0	72.7	43.7	-29.0
61	Public Order	8.9	12231	15270	3039	24.8	0.2	1048	1074	2.5	3249	3451	6.2	2011	2094	83	4.1	160	133	-16.9	525	430	-18.1	16.4	13.7	-2.7	-1.2	15.3	12.4	-2.9	16.2	12.5	-3.7
62	Miscellaneous Crimes against Society	16.3	3299	3808	509	15.4	-0.4	289	262	-9.3	891	891	0.0	561	661	100	17.8	38	48	26.3	146	172	17.8	17.0	17.4	0.4	0.1	13.1	18.3	5.2	16.4	19.3	2.9

Crime Severity Score (CSS) - Based on the ONS Crime Severity Score which replaces the Cambridge Harm Index - data are for the financial year 2018/19, (a total of 21 crime types have been ranked where scores are available). The CSS excludes proactively generated crime detection by police i.e. State Based Crime, as these offences do not reliably measure harms experienced by the population. Rather, they measure the resources invested in catching offenders.

Yr on Yr 1m %/pt. diff. - compares the month of December 2019 with the month of December 2018.

Yr on Yr 3m %/pt. diff. - compares the three months to December 2019 with the three months to December 2018.

Z Score - Standard Score over 1.96 or under -1.96. Standard Scores are used to calculate the probability of an event occurring within a normal distribution; they are also used to compare two scores from different normal distributions (for example the number of offences per police District). In this document, Standard Scores are calculated in the following way: (current month's figure, minus the average figure per month over the previous three years) divided by the Standard Deviation of the same three year period. Standard Deviation is a measure to determine how spread out figures are from the average or "mean" a large standard deviation indicates the data is widely spread; if small, the data will be more clustered together.