

Police and Crime Plan 2016-2020

Monthly Performance Update

April 2020

National and MSG positions are to 29th February 2020 (Essex Police data are to 30th April 2020).



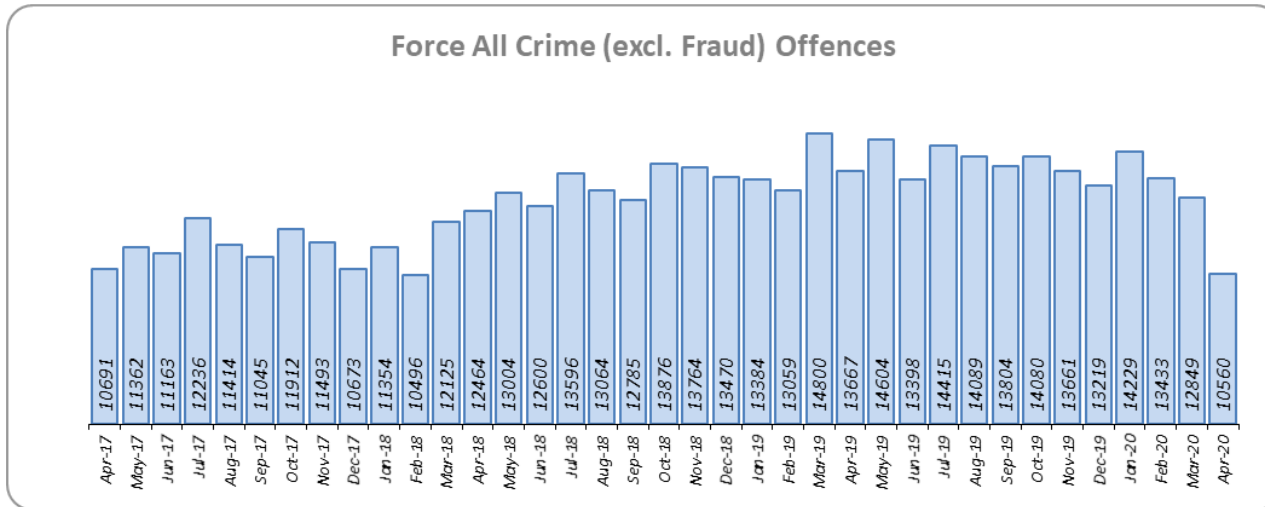
Version 1.1
Produced May 2020
Performance Analysis Unit, Essex Police
Sensitivity: Official

Executive Summary

- **Four of the seven PFCC Priorities** for Essex Police have been given a recommended grade of **'Good'**. Recommended grades have been determined with reference to comparisons with Essex Police's Most Similar Group (MSG) of forces, internal Key Performance Indicators (KPIs), and professional judgement.
- **Three of the seven PFCC priorities** – 1 (More local, visible and accessible policing), 3 (Breaking the cycle of domestic abuse) and 4 (Reverse the trend in serious violence) – have been given a recommended grade of **'Requires Improvement'**.
- The **recommended grade for PFCC Priority 6 – Protecting children & vulnerable people** – has been **upgraded to 'Good'** due to the continued increase in the number of solved Child Abuse outcomes.
- All Crime rose by 2.3% for the 12 months to April 2020 compared to the 12 months to April 2019. This equates to 3,635 additional offences. However, Essex Police recorded 3,107 fewer offences in the month of April 2020 compared to April 2019; this equates to a 22.7% reduction.
- The number of crimes recorded daily by Essex Police reduced by around 23.9% (110 fewer offences) after the introduction of the Government's restrictions on gathering and movement in relation to Covid-19, compared to the period of no intervention. Prior to any government intervention, 01 May 2019 to 12 March 2020, an average of 460 crimes per day were recorded. In the period of recommended social distancing, 13 March 2020 to 23 March 2020, an average of 430 crimes per day were recorded. In the period of compulsory lockdown, 24 Mar 2020 to 30 April 2020, an average of 350 crimes per day were recorded.
- Essex Police solved 88 fewer crimes in the 12 months to April 2020 compared to the 12 months to April 2019; this equates to a 0.4% decrease. However, Essex Police solved 481 more offences in the month of April 2020 compared to April 2019; this equates to a 27.9% increase.
- Confidence (Essex Police internal survey) is at 64.7% (results to the 12 months to December 2019). Compared to year ending December 2018, confidence in the local police significantly decreased (deterioration of 3.0% points). Confidence in the local police from the Crime Survey of England and Wales (CSEW) places Essex eighth in its MSG, and 8.7% points below the MSG average.
- Due to the Government's social distancing restrictions that were implemented on 23 March 2020, statistically significant decreases were experienced for a high number of offence types in the month of April 2020.*

* Please see additional notes on page 11 - 13.

Police Priority Indicators	12 months to April 2019	12 months to April 2020	Number Difference	% Difference	Essex per 1,000 pop.	MSG Ave per 1,000 pop.	# diff.	Essex MSG Position
Number of all crime offences	160,121	163,756	3,635	2.3	93.4	79.7	13.6	8



Essex experienced a 2.3% increase in All Crime (3,635 additional offences) for the 12 months to April 2020 compared to the 12 months to April 2019. Essex is eighth in its Most Similar Group of forces (MSG) for crime per 1,000 population.

The number of crimes recorded daily by Essex Police reduced by around 23.9% (110 fewer) after the introduction of the Government’s restrictions on gathering and movement in relation to Covid-19, compared to the period of no intervention.

Prior to any Government intervention, 1 May 2019 to 12 March 2020, an average of 460 crimes per day were recorded.

In the period of recommended social distancing, 13 March 2020 to 23 March 2020, an average of 430 crimes per day were recorded.

In the period of compulsory lockdown, 24 Mar 2020 to 30 April 2020, an average of 350 crimes per day were recorded.

Essex was graded as Outstanding in its recent HMICFRS Crime Data Integrity (CDI) inspection. Essex Police is only the third force of the 41 that have been judged as outstanding on the first visit in this inspection programme.

Police Priority Indicators	12 months to Dec 2018	12 months to Dec 2019	% pt. Difference	% Difference
Percentage of people who have confidence in policing in Essex (internal survey Q13b)	67.7	64.7	-3.0	-
<i>Confidence Interval</i>	1.0	1.1		

Police Priority Indicators	12 months to Dec 2018	12 months to Dec 2019	Number Difference	% Difference	Essex	MSG Ave	# diff.	Essex MSG Position
Confidence in the local police (Crime Survey of England and Wales)	48.1	46.6	-1.5	-	46.6	55.3	-8.7	8
<i>Confidence Interval</i>	4.2	4.2			4.2	1.7		

Confidence (Essex Police internal survey) is at 64.7% (results to the 12 months to December 2019). Compared to year ending December 2018, confidence in the local police has significantly decreased (deterioration of 3.0% points).

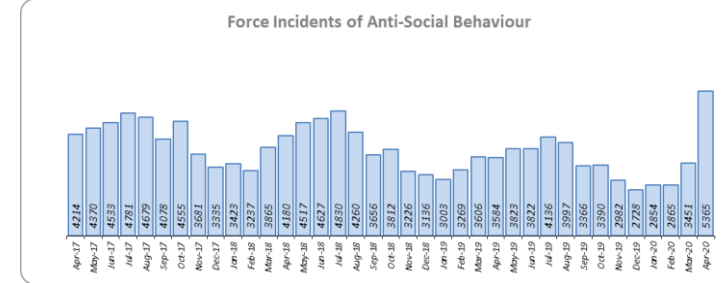
Confidence in the local police from the Crime Survey of England and Wales (CSEW) places Essex eighth in its MSG, and 8.7% points below the MSG average. However, the sample size from this survey is not representative at a sufficiently small scale to measure local level results. The Essex Police internal survey (results detailed above) was therefore introduced to achieve a more accurate local measure with only a small margin of error. The results from the Essex Police survey show that the Force performs significantly better on confidence in local policing than the results from the CSEW, which asks the same question.

Due to the fact that Essex is 8th in its MSG for both crime per 1,000 population and for confidence in local police (CSEW), and that the Essex Police internal survey shows a deterioration in confidence in local police, a grade of Requires Improvement is recommended.

Priority 2 - Crack down on anti-social behaviour

Grade: **Good**

Police Priority Indicators	12 months to April 2019	12 months to April 2020	Number Difference	% Difference
Number of anti-social behaviour incidents	45,864	43,027	-2,837	-6.2



Police Priority Indicators	12 months to Dec 2018	12 months to Dec 2019	Number Difference	% Difference	Essex	MSG Ave	# diff.	Essex MSG Position
ASB Perception:- Perception that ASB is a problem (CSEW)	6.1	3.1	-3.0	-	3.1	4.9	-1.8	2
<i>Confidence Interval</i>	4.4	2.5			2.5	1.4		

Police Priority Indicators	12 months to Dec 2018	12 months to Dec 2019	% pt. Difference	% Difference
Percentage of people who have confidence Essex Police and the organisations they work with are dealing with ASB (internal survey Q8a)	66.1	64.0	-2.1	-
<i>Confidence Interval</i>	1.1	1.1		

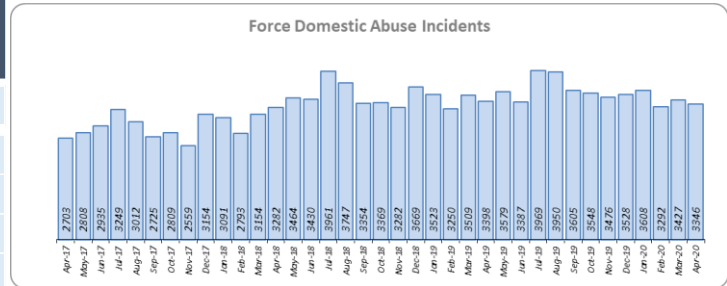
Essex experienced a 6.2% reduction (2,837 fewer) in Anti-Social Behaviour (ASB) incidents for the 12 months to April 2020 compared to the 12 months to April 2019. Part of this decrease is due to better Crime Data Accuracy (CDA); more incidents reported as ASB are now being correctly recorded as crimes. Some of the decrease may also be due to people reporting incidents directly to the Council and Housing Authorities.

ASB Perception (from the Crime Survey of England and Wales) in Essex experienced a 3.0% point decrease (improvement). Essex is 1.8% points better than the MSG average; this places Essex second in its Most Similar Group of forces. However, results of Essex's internal survey decreased in relation to how well Essex Police and the organisations they work with deal with ASB (deterioration of 2.1% points).

Due to the reduction in ASB incidents, and the fact that ASB Perception is better than the MSG average, a grade of Good is recommended.

Police Priority Indicators	12 months to April 2019	12 months to April 2020	Number Difference	% Difference
Number of incidents of domestic abuse	41,956	42,715	759	1.8
Number of repeat incidents of domestic abuse	19,215	20,703	1,488	7.7

Police Priority Indicators	12 months to April 2019	12 months to April 2020	Number Difference	% Difference
Percentage of domestic abuse offences solved	12.5	10.4	-2.1	-
Total domestic abuse offences solved	3,303	3,135	-168	-5.1
High Risk domestic abuse offences solved	878	731	-147	-16.7
Medium Risk domestic abuse offences solved	1,080	963	-117	-10.8
Standard Risk domestic abuse offences solved	1,146	1,265	119	10.4



Essex experienced a 1.8% increase (759 more) in Domestic Abuse incidents and a 7.7% increase (1,488 more) in repeat incidents of Domestic Abuse for the 12 months to April 2020 compared to the 12 months to April 2019.

The Domestic Abuse solved rate fell by 2.1% points to 10.4% during the same period. The number of offences solved has also fallen by 168 offences.

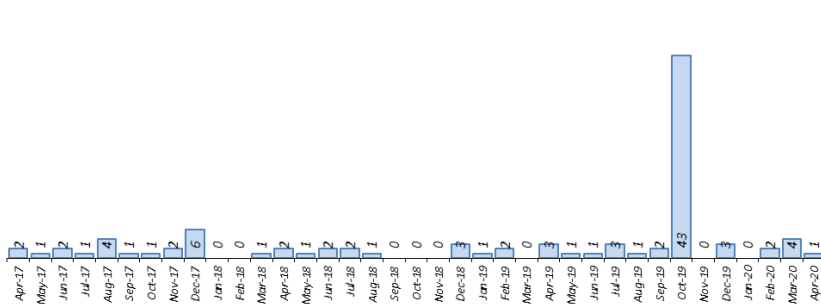
Due to the increase in repeat incidents and the decrease in both the solved volume and the solved rate, a grade of Requires Improvement is recommended.

Priority 4 - Reverse the trend in serious violence

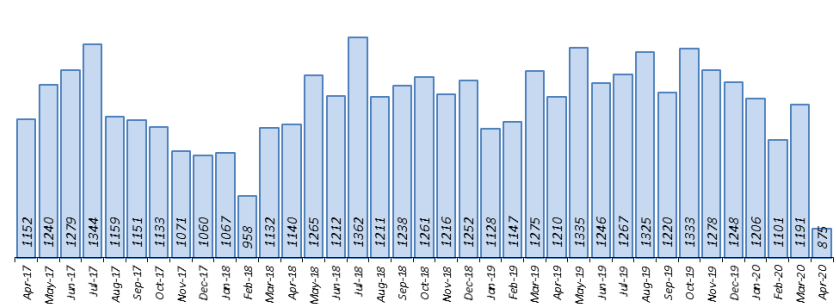
Grade: **Requires Improvement**

Police Priority Indicators	12 months to April 2019	12 months to April 2020	Number Difference	% Difference	Essex per 1,000	MSG Ave per 1,000	# diff.	Essex MSG Position
Number of homicides	16	61	45	281.3	0.032	0.012	0.021	8
Number of violence with injury offences (new definition from Nov 2017)	14,818	14,885	67	0.5	8.497	8.513	-0.016	5

Force Homicide Offences



Force Violence with Injury Offences

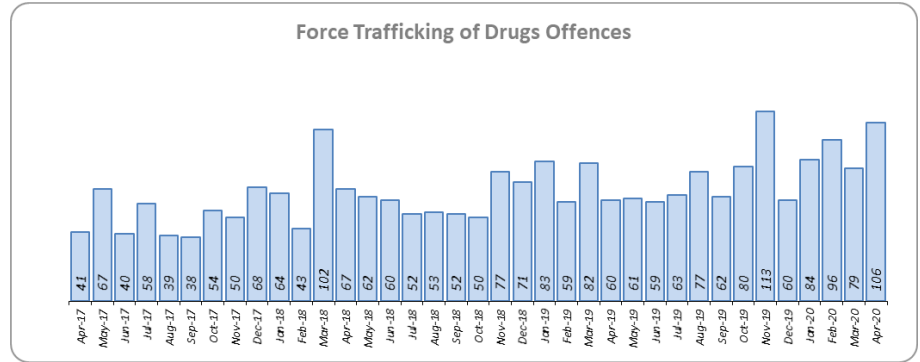
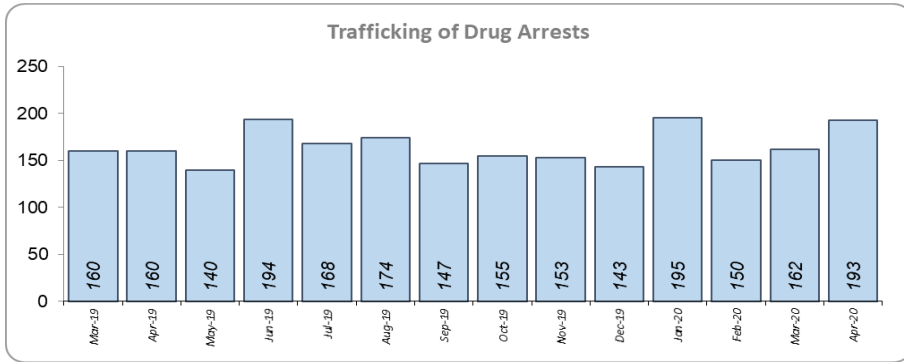


Essex saw an increase of 45 Homicides (to 61 offences) for the 12 months to April 2020 compared to the 12 months to April 2019. This includes the tragic incident where 39 Vietnamese nationals were discovered in a lorry trailer in Grays in October 2019. Essex is eighth in its Most Similar Group (MSG) of forces for offences per 1,000 population, and is higher than the MSG average.

There was a 0.5% increase (67 more offences) in Violence with Injury. Essex is fifth in its MSG for offences per 1,000 population, and is slightly worse than the MSG average. The increase in this offence is, in part, due to the rise in domestic abuse related Violence with Injury (11.2% increase, 557 more offences); 37.1% of Violence with Injury is domestic abuse-related.

Due to the fact that Essex continues to experience an increase in Violence with Injury, a grade of Requires Improvement is recommended.

Police Priority Indicators	12 months to April 2019	12 months to April 2020	Number Difference	% Difference
Number of Organised Criminal Group disruptions* **	17	37	20	117.6
Trafficking of drugs arrests	1,523	1,910	387	25.4



37 Organised Crime Group (OCG) disruptions were conducted in Essex in January to March* 2020 inclusive compared with 17 in the same months in 2019 (20 more). In January 2019 there was a change in the way in which the number of OCG disruptions were counted; this follows National Crime Agency (NCA) and Eastern Region Special Operations Unit (ERSOU) guidance to ensure that all forces record disruptions in the same way. Year-on-year comparisons can only therefore be made from January 2020.

Trafficking of drug arrests, which are also as a result of police proactivity, increased by 25.4% (387 more) for the 12 months to April 2020 compared to the 12 months to April 2019. In the same period, 29.8% more trafficking of drugs offences have been recorded (224 more offences to 976).

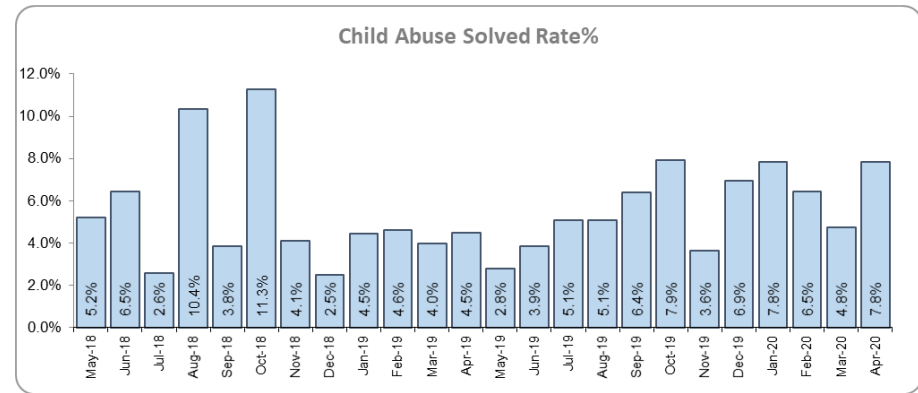
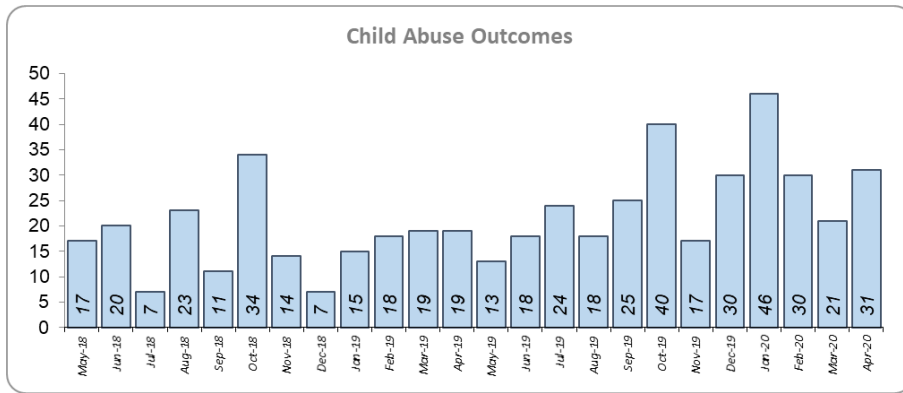
Due to the increase in Trafficking of Drug Arrests, a grade of Good is recommended.

Please note:

* **Organised Crime Group (OCG) disruption data for April 2020 are currently unavailable due to operational priorities within the OCG team.**

** the number of Organised Crime Group disruptions are a comparison of January to March 2019 and January to March 2020, as there was a change in the method by which these disruptions were counted from January 2019.

Police Priority Indicators	12 months to April 2019	12 months to April 2020	Number Difference	% Difference
Number of child abuse outcomes	209	325	116	55.5
Child abuse solved rate	5.3	5.9	0.6	-



There was a 55.5% increase (116 more) in the number of solved Child Abuse Outcomes in the 12 months to April 2020 compared to the 12 months to April 2019.

39.4% more offences (an additional 1,561) were recorded in the 12 months to April 2020 compared to the 12 months to April 2019. There was a 0.6% point increase in the solved rate (from 5.3% to 5.9%).

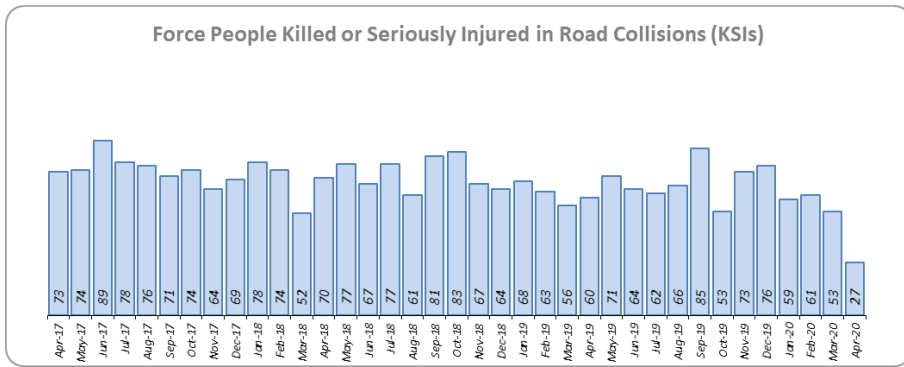
As the number of Child Abuse investigations solved each month has been consistently higher than the volumes recorded in the same month the previous year (since September 2019), a grade of Good is recommended.

Priority 7 - Improve safety on our roads

Grade: **Good**

Police Priority Indicators	12 months to April 2019	12 months to April 2020	Number Difference	% Difference
All people killed or seriously injured (KSI) in road collisions	836	796	-40	-4.8
Number of driving related mobile phone crime on Essex roads	2,593	1,287	-1,306	-50.4
Number of driving under the influence of drink and/or drugs on Essex roads	3,163	3,748	585	18.5
<i>Number of driving under the influence of drink on Essex roads</i>	<i>1,412</i>	<i>1,423</i>	<i>11</i>	<i>0.8</i>
<i>Number of driving under the influence of drugs on Essex roads</i>	<i>1,386</i>	<i>1,910</i>	<i>524</i>	<i>37.8</i>
<i>Number of Failure to Provide samples</i>	<i>365</i>	<i>415</i>	<i>50</i>	<i>13.7</i>

Essex (per 100 million km) Data to June 2019	MSG Ave (per 100 million km) Data to June 2019	# diff.	Essex MSG Position
1.171	1.120	0.051	5



Rolling 12 months	12m to Apr 19	12m to Apr 20	Number Diff	% Diff
KSI - All	836	796	-40	-4.8%
KSI - Fatalities	43	44	1	2.3%
KSI - Serious injuries	793	752	-41	-5.2%
Number of Collisions	830	785	-45	-5.4%

There was a 4.8% decrease (40 fewer) in the numbers of those Killed or Seriously Injured (KSI) in Essex for the 12 months to April 2020 compared to the 12 months to April 2019. Please note that most KSIs do not result in criminal offences (such as death or serious injury caused by dangerous driving). Essex is placed fifth in its Most Similar Group (MSG) of forces for casualties per 100 million vehicle kilometres (results to June 2019).

There has been a 50.4% decrease in mobile phone crime (1,306 fewer offences) and a 18.5% increase (585 more offences) in drink/drug driving with drug driving seeing a 37.8% increase (524 more).

Due to the decrease in KSIs, a grade of Good is recommended. As of December 2018, Essex was slightly worse than the MSG average per 100 million km for this metric. However, due to the fact that more recent national figures have not been released, the current position cannot be updated. The date of the next national release has not yet been confirmed.

Monthly Performance Overview: Exceptions

Exceptions Overview

Due to the government lockdown and social distancing restrictions implemented on 23rd March 2020 the following offence types experienced statistically significant changes for the month of April 2020.

Anti-Social Behaviour

6.2% decrease (2,837 less incidents) for the 12 months to April 2020 compared to the 12 months to April 2019. There were statistically exceptional **increases** in eight Districts and a statistically exceptional **decrease** in Stansted Airport in April 2020.

Violence with Injury

0.5% increase (67 more offences) for the 12 months to April 2020 compared to the 12 months to April 2019. There were statistically exceptional **decreases** in four Districts in April 2020.

Violence without Injury

21.1% increase (4,705 more offences) for the 12 months to April 2020 compared to the 12 months to April 2019. There were statistically exceptional **decreases** in four Districts in April 2020.

Other Sexual Offences

6.2% increase (163 more offences) for the 12 months to April 2020 compared to the 12 months to April 2019. There was a statistically exceptional **decrease** in one District in April 2020.

Robbery of Personal Property

14.7% decrease (239 fewer offences) for the 12 months to April 2020 compared to the 12 months to April 2019. There was a statistically exceptional **decrease** in one District in April 2020.

Burglary Residential

16.0% decrease (1,376 fewer offences) for the 12 months to April 2020 compared to the 12 months to April 2019. There were statistically exceptional **decreases** in four Districts in April 2020.

Monthly Performance Overview: Exceptions (continued - 1)

Burglary Business and Community

16.8% decrease (554 fewer offences) for the 12 months to April 2020 compared to the 12 months to April 2019. The Force saw a statistically exceptional **decrease** in April 2020.

Theft from a Vehicle

5.9% decrease (453 fewer offences) for the 12 months to April 2020 compared to the 12 months to April 2019. There were statistically exceptional **decreases** in four Districts in April 2020.

Theft of a Vehicle - Offences

11.6% decrease (636 fewer offences) for the 12 months to April 2020 compared to the 12 months to April 2019. There were statistically exceptional **decreases** in five Districts in April 2020.

Theft of a Vehicle - Solved Rate

17.5% decrease (36 fewer solved offences) for the 12 months to April 2020 compared to the 12 months to April 2019. The Force saw a statistically exceptional **increase** in April 2020.

Theft from the Person

13.1% decrease (188 fewer offences) for the 12 months to April 2020 compared to the 12 months to April 2019. There were statistically exceptional **decreases** in three Districts in April 2020.

Shoplifting - Offences

9.9% decrease (1,096 fewer offences) for the 12 months to April 2020 compared to the 12 months to April 2019. There were statistically exceptional **decreases** in nine Districts and Stansted Airport in April 2020.

Shoplifting - Solved Rate

16.0% decrease (579 fewer solved offences) for the 12 months to April 2020 compared to the 12 months to April 2019. There were statistically exceptional **increases** in three Districts and Stansted Airport in April 2020.

Monthly Performance Overview: Exceptions (continued - 2)

Theft from the Person

13.1% decrease (188 fewer offences) for the 12 months to April 2020 compared to the 12 months to April 2019. There were statistically exceptional **decreases** in three Districts in April 2020.

Other Theft* - Offences

14.8% decrease (2,049 fewer offences) for the 12 months to April 2020 compared to the 12 months to April 2019. There were statistically exceptional **decreases** in ten Districts and Stansted Airport in April 2020.

Other Theft* - Solved Rate

16.2% decrease (127 fewer solved offences) for the 12 months to April 2020 compared to the 12 months to April 2019. There were statistically exceptional **increases** in three Districts in April 2020.

* **Other Theft** comprises: Blackmail, Theft in a Dwelling, Theft by a Employee, Theft of mail, Dishonest Use of Electricity, Theft from Automatic Machines or Meters, Other Theft or Unauthorised Taking and Making Off without Payment

Criminal Damage - Offences

2.3% increase (358 more offences) for the 12 months to April 2020 compared to the 12 months to April 2019. The Force saw a statistically exceptional **decrease** in April 2020.

Criminal Damage - Solved Rate

10.4% decrease (176 fewer solved offences) for the 12 months to April 2020 compared to the 12 months to April 2019. The Force saw a statistically exceptional **increase** in April 2020.

Trafficking of Drugs

29.8% increase (224 more offences) for the 12 months to April 2020 compared to the 12 months to April 2019. There were statistically exceptional **increases** in two Districts in April 2020. **These offences are an measure of police proactivity.**

Possession of Drugs

51.7% increase (1,817 more offences) for the 12 months to April 2020 compared to the 12 months to April 2019. There were statistically exceptional **increases** in eight Districts in April 2020. **These offences are an measure of police proactivity.**

Monthly Performance Overview: Of Note

Priority 1 – More local, visible and accessible policing

As a result of the #FitTheBill recruitment campaign there has been an incredible 90% increase in police officer applications during April 2020 compared to April 2019. Additionally, the Force ambition had been to reach 3,200 officers by March 2020. From 1st April the number stood at more than 3,300.

The number of All Crime offences decreased by 17.8% in April 2020 compared to March 2020 (2,289 fewer offences). This is due to the government lockdown and social distancing restrictions implemented on 23rd March 2020.

Priority 2 – Crack down on anti-social behaviour

The number of anti-social behaviour incidents increased by 55.5% in April 2020 compared to March 2020 (1,914 incidents). This is due to the government social distancing restrictions implemented on 23rd March 2020 resulting in reports of incidents that previously were not considered to be anti-social behaviour, e.g. social gatherings (indoors and outdoors) and shops and businesses continuing to trade.

Priority 4 – Reverse the trend in serious violence

The number of Violence With Injury offences decreased by 26.5% in April 2020 compared to March 2020 (316 fewer offences). This is due to the government lockdown and social distancing restrictions implemented on 23rd March 2020.

Priority 7 – Improve safety on our roads

The number of KSIs decreased by 49.1% in April 2020 compared to March 2020 (26 fewer incidents). This is due to the government lockdown restrictions implemented on 23rd March 2020.

2016-2020 Police and Crime Plan Performance Indicators

Table 1

Police and Crime Plan Priorities	Police Priority Indicators	12 months to April 2019	12 months to April 2020	Number Difference	% Difference	Direction of Travel
Priority 1 - More local, visible and accessible policing	Percentage of people who have confidence in policing in Essex (internal survey Q13b) ¹	67.7	64.7	-3.0	-	Deteriorating
	<i>Confidence Interval</i> ²	1.0	1.1			
	Confidence in the local police (CSEW) ³	48.1	46.6	-1.5	-	Deteriorating
	<i>Confidence Interval</i> ²	4.2	4.2			
	Number of all crime offences	160,121	163,756	3,635	2.3	Deteriorating
Priority 2 - Crack down on anti-social behaviour	Number of anti-social behaviour incidents	45,864	43,027	-2,837	-6.2	Improving
	Percentage of people who have confidence that the policing response to ASB is improving (internal survey Q8a) ⁴	66.1	64.0	-2.1	-	Stable
	<i>Confidence Interval</i> ²	1.1	1.1			
Priority 3 - Breaking the cycle of domestic abuse	Number of incidents of domestic abuse	41,956	42,715	759	1.8	Deteriorating
	Number of repeat incidents of domestic abuse	19,215	20,703	1,488	7.7	Deteriorating
	Percentage of domestic abuse offences solved	12.5	10.4	-2.1	-	Deteriorating
Priority 4 - Reverse the trend in serious violence	Number of homicides ⁸	16	61	45	281.3	Deteriorating
	Number of violence with injury offences (new definition from Nov 2017)	14,818	14,885	67	0.5	Deteriorating
Priority 5 - Tackle gangs and organised crime	Number of Organised Criminal Group disruptions ⁵	17	37	20	117.6	Improving
	Trafficking of drugs arrests	1,523	1,910	387	25.4	Improving
Priority 6 - Protecting children & vulnerable people	Number of child abuse outcomes ⁶	209	325	116	55.5	Improving
	Child abuse solved rate	5.3	5.9	0.6	-	Improving
Priority 7 - Improve safety on our roads	Number of driving related mobile phone crime on Essex roads	2,593	1,287	-1,306	-50.4	Improving
	Number of driving under the influence of drink and/or drugs on Essex roads	3,163	3,748	585	18.5	Deteriorating
	All people killed or seriously injured (KSI) in road collisions ⁷	836	796	-40	-4.8	Improving

Please note:

- **The Organised Crime Group (OCG) disruptions data for April 2020 are unavailable due to operational priorities within the OCG team.**
- The number of Organised Crime Group disruptions are a comparison of January to March 2019 and January to March 2020, as there was a change in the method by which these disruptions were counted from January 2019.

Please view above table with the explanations and caveats detailed on page 16.

End Notes

¹ Question from Essex Police's own confidence and perception survey (Question 13b). Results are for the period 12 months December 2019 versus the 12 months to December 2018.

² The confidence interval is the range +/- between where the survey result may lie. This is mainly influenced by the number of people answering the survey. The more people that answer the survey, the smaller the interval range.

³ Crime Survey for England and Wales (CSEW): 12 months to December 2019 vs. 12 months to December 2018.

⁴ Question from Essex Police's own confidence and perception survey (Question 8a). Results are for the period 12 months to December 2019 versus the 12 months to December 2018.

⁵ The Organised Crime Group disruptions data for April 2020 are unavailable due to operational priorities within the OCG team. Please note that the number of Organised Crime Group disruptions are a comparison of January to March 2019 and January to March 2020 only due to a change in counting rules that occurred in January 2019. From January 2019, activity has been recorded rather than the number of people arrested. If there was a day of action, for example, and five people were arrested, this would formerly have counted as five disruptions, but now will count as one. The change stems from confusion over the previous guidelines, with police forces counting disruptions in different ways.

⁶ Solved outcomes are crimes that result in: charge or summons, caution, crimes taken into consideration, fixed penalty notice, cannabis warning or community resolution.

⁷ 'Killed or Seriously Injured' (KSI) refers to all people killed or seriously injured on Essex's roads, regardless of whether any criminal offences were committed. 'Causing Death/Serious Injury by Dangerous/Inconsiderate Driving' offences (detailed on p.10) refers to the number of crimes of this type.

⁸ Please note that on Wednesday 23 October 2019 the bodies of 39 Vietnamese nationals were discovered in a lorry trailer in Grays. This tragic incident is reflected in the Homicide numbers.

Crime Tree Data – Rolling 12 Months to April

Table 2

Force

Crime Tree Data - Rolling 12 Months to April

Top Level		Offences										Solved Outcomes							Solved Rates %															
Crime Type	% DA 2020	2019	2020	# diff.	% diff.	Z	CSS	1m Apr 19	1m Apr 20	Yr on Yr 1m % diff.	3m Apr 19	3m Apr 20	Yr on Yr 3m % diff.	2019	2020	# diff.	% diff.	1m Apr 19	1m Apr 20	Yr on Yr 1m % diff.	3m Apr 19	3m Apr 20	Yr on Yr 3m % diff.	2019	2020	% pt. diff.	Z	1m Apr 19	1m Apr 20	Yr on Yr 1m % pt. diff.	3m Apr 19	3m Apr 20	Yr on Yr 3m % pt. diff.	
Anti-Social Behaviour (Incidents)	-	45864	43027	-2837	-6.2	2.4	-	-	-	-	-	-	-	-	-	-	-	-	-	-	-	-	-	-	-	-	-	-	-	-	-	-	-	-
All Crime (excl. Action (NFIB) Fraud)	18.4	160121	163756	3635	2.3	-1.8	13667	10560	-22.7	41495	36606	-11.8	23165	23077	-88	-0.4	1727	2208	27.9	5727	6027	5.2	14.5	14.1	-0.4	3.7	12.6	20.9	8.3	13.8	16.5	2.7		
- State Based Crime	7.5	23463	26573	3110	13.3	1.2	2137	2235	4.6	6369	6389	0.3	7855	9280	1425	18.1	668	1011	51.3	2073	2623	26.5	33.5	34.9	1.4	2.7	31.3	45.2	14.0	32.5	41.1	8.5		
- Victim Based Crime	20.5	136658	137183	525	0.4	-2.6	11530	8325	-27.8	35126	30217	-14.0	15310	13797	-1513	-9.9	1059	1197	13.0	3654	3404	-6.8	11.2	10.1	-1.1	2.2	9.2	14.4	5.2	10.4	11.3	0.9		
Victim Based Crime		Offences										Solved Outcomes							Solved Rates %															
Crime Type	% DA 2020	2019	2020	# diff.	% diff.	Z	CSS	1m Apr 19	1m Apr 20	Yr on Yr 1m % diff.	3m Apr 19	3m Apr 20	Yr on Yr 3m % diff.	2019	2020	# diff.	% diff.	1m Apr 19	1m Apr 20	Yr on Yr 1m % diff.	3m Apr 19	3m Apr 20	Yr on Yr 3m % diff.	2019	2020	% pt. diff.	Z	1m Apr 19	1m Apr 20	Yr on Yr 1m % pt. diff.	3m Apr 19	3m Apr 20	Yr on Yr 3m % pt. diff.	
Violence Against the Person	36.8	58413	64128	5715	9.8	0.0	5123	4591	-10.4	15666	15080	-3.7	7696	6950	-746	-9.7	529	728	37.6	1837	1863	1.4	13.2	10.8	-2.3	0.9	10.3	15.9	5.5	11.7	12.4	0.6		
- Homicide	6.6	16	61	45	281.3	-0.2	17	3	1	-66.7	5	7	40.0	11	57	46	418.2	0	2	-	2	6	200.0	68.8	93.4	24.7	2.3	0.0	200.0	200.0	40.0	85.7	45.7	
- Violence with Injury	37.1	14818	14885	67	0.5	-3.1	1210	875	-27.7	3648	3167	-13.2	2786	2249	-537	-19.3	178	205	15.2	641	536	-16.4	18.8	15.1	-3.7	1.3	14.7	23.4	8.7	17.6	16.9	-0.6		
- Death or Serious Injury caused by unlawful driving	4.2	34	24	-10	-29.4	0.2	20	2	3	50.0	9	4	-55.6	29	28	-1	-3.4	3	1	-66.7	7	4	-42.9	85.3	116.7	31.4	-0.6	150.0	33.3	-116.7	77.8	100.0	22.2	
- Death or serious injury by dangerous driving	5.3	29	19	-10	-34.5	-	2	3	50.0	8	4	-50.0	26	18	-8	-30.8	3	0	-100.0	6	2	-66.7	89.7	94.7	5.1	-	150.0	0.0	-150.0	75.0	50.0	-25.0		
- Death by careless or inconsiderate driving	-	1	0	-1	-100.0	-	0	0	-	0	0	-	0	0	0	-	-	0	0	-	0	0	-	0.0	-	-	-	-	-	-	-	-	-	
- Death or serious injury driving - unlicensed, disqualified, uninsured	0.0	3	5	2	66.7	-	0	0	-	1	0	-100.0	2	9	7	350.0	0	0	-	1	2	100.0	66.7	180.0	113.3	-	-	-	-	-	100.0	-	-	
- Causing death by aggravated vehicle taking	-	1	0	-1	-100.0	-	0	0	-	0	0	-	0	1	0	-1	-100.0	0	0	-	0	0	-	0.0	-	-	-	-	-	-	-	-	-	
- Violence without Injury	38.5	22255	26960	4705	21.1	0.5	7	2043	2012	-1.5	5994	6538	9.1	3028	2951	-77	-2.5	212	331	56.1	705	857	21.6	13.6	10.9	-2.7	1.1	10.4	16.5	6.1	11.8	13.1	1.3	
- Stalking and Harassment	34.7	21290	22198	908	4.3	0.3	10	1865	1700	-8.8	6010	5364	-10.7	1842	1665	-177	-9.6	136	189	39.0	482	460	-4.6	8.7	7.5	-1.2	1.1	7.3	11.1	3.8	8.0	8.6	0.6	
Sexual Offences	20.8	4367	40763	4966	114.1	-1.5	392	278	-29.1	1192	1029	-13.7	331	399	168	72.7	24	37	54.2	53	114	115.1	5.3	8.2	2.9	2.3	6.1	13.3	7.2	4.4	11.1	6.6		
- Rape	36.8	1741	2064	333	19.1	-0.7	169	120	-29.0	489	445	-9.0	29	75	36	92.3	6	12	100.0	9	19	111.1	2.2	3.6	1.4	3.7	3.6	10.0	6.4	1.8	4.3	2.4		
- Rape - Under 16 yrs	3.3	477	490	13	2.7	-2.0	5	49	22	-55.1	140	104	-25.7	17	37	20	117.6	3	5	66.7	4	7	75.0	3.6	7.6	4.0	3.3	6.1	22.7	16.6	2.9	6.7	3.9	
- Rape - Over 16 yrs	47.2	1264	1584	320	25.3	-0.3	3	120	98	-18.3	349	341	-2.3	22	38	16	72.7	3	7	133.3	5	12	140.0	1.7	2.4	0.7	3.7	2.5	7.1	4.6	1.4	3.5	2.1	
- Other Sexual Offences	8.9	2626	2789	163	6.2	-2.1	4	223	158	-29.1	703	584	-16.9	192	324	132	68.8	18	25	38.9	44	95	115.9	7.3	11.6	4.3	1.6	8.1	15.8	7.8	6.3	16.3	10.0	
- Other sexual offences : Under 13	1.9	704	630	-74	-10.5	-	52	45	-13.5	173	136	-21.4	40	69	29	72.5	4	3	-25.0	11	20	81.8	5.7	11.0	5.3	-	7.7	6.7	-1.0	6.4	14.7	8.3		
- Other sexual offences : Under 16	2.5	717	837	120	16.7	-	62	52	-16.1	206	177	-14.1	65	126	61	93.8	5	12	140.0	17	33	94.1	9.1	15.1	6.0	-	8.1	23.1	15.0	8.3	18.6	10.4		
- Other sexual offences : Age 13 to 17	5.0	10	20	10	100.0	-	1	2	100.0	3	6	100.0	1	1	0	0.0	0	0	-	0	0	-	10.0	5.0	-5.0	-	0.0	0.0	0.0	0.0	0.0	0.0		
- Other sexual offences : Over 13	19.8	926	1021	95	10.3	-	83	46	-44.6	243	215	-11.5	60	88	28	46.7	5	8	60.0	9	29	222.2	6.5	8.6	2.1	-	6.0	17.4	11.4	3.7	13.5	9.8		
- Other sexual offences : Over 16	28.6	7	7	0	0.0	-	0	0	-	1	0	-100.0	0	0	0	-	0	0	-	0	0	-	0.0	0.0	0.0	-	-	-	-	-	-	-		
- Other sexual offences : Not Age Specific	4.0	262	274	12	4.6	-	25	13	-48.0	77	50	-35.1	26	40	14	53.8	4	2	-50.0	7	13	85.7	9.9	14.6	4.7	-	16.0	15.4	-0.6	9.1	26.0	16.9		
Robbery	2.1	1813	1501	-312	-17.2	-2.5	122	71	-41.8	489	304	-37.8	206	170	-36	-17.5	13	13	0	50	43	-14.0	11.4	11.3	0.0	1.3	10.7	18.3	7.7	10.2	14.1	3.9		
- Robbery of business property	0.0	188	115	-73	-38.8	-1.7	14	15	5	-66.7	51	17	-66.7	41	26	-15	-36.6	5	3	40.0	11	4	-63.6	21.8	22.6	0.8	2.4	33.3	60.0	26.7	21.6	23.5	2.0	
- Robbery of Personal Property	2.3	1625	1386	-239	-14.7	-2.3	6	107	66	-38.3	438	287	-34.5	165	144	-21	-12.7	8	10	25.0	39	39	0.0	10.2	10.4	0.2	1.0	7.5	15.2	7.7	8.9	13.6	4.7	
Thft Offences	1.5	55869	49318	-6551	-11.7	-4.4	4519	2404	-46.8	13693	10155	-25.8	6450	4734	-716	-13.1	380	274	-27.9	1346	979	-27.3	9.8	9.6	-0.2	1.8	8.4	11.4	3.0	9.8	9.6	-0.2		
- Burglary	2.7	11901	9971	-1930	-16.2	-2.7	861	557	-35.3	2729	2203	-19.3	542	586	-56	-8.7	36	27	-25.0	138	88	-36.2	5.4	5.9	0.5	-0.3	4.2	4.8	0.7	5.1	4.0	-1.1		
- Burglary Residential	2.3	8603	7227	-1376	-16.0	-2.6	2	634	394	-37.9	1987	1568	-21.1	365	374	9	2.5	20	14	-30.0	80	56	-30.0	4.2	5.2	0.9	-0.6	3.2	3.6	0.4	4.0	3.6	-0.5	
- Burglary Business & Community	0.1	3298	2744	-554	-16.8	-2.0	11	227	163	-28.2	742	635	-14.4	277	212	-65	-23.5	16	13	-18.8	58	32	-44.8	8.4	7.7	-0.7	0.6	7.0	8.0	0.9	7.8	5.0	-2.8	
- Burglary Dwelling (pre-Apr 17 definition)	0.1	6126	5180	-946	-15.4	-2.8	390	211	-45.9	1364	1110	-18.6	339	351	12	3.5	13	13	0	70	53	-24.3	5.5	6.8	1.2	0.0	3.3	6.2	2.8	5.1	4.8	-0.4		
- Burglary Other (pre-Apr 17 definition)	3.2	5775	4791	-984	-17.0	-1.5	471	346	-26.5	1365	1093	-19.9	300	235	-68	-22.4	23	14	-39.1	68	35	-48.5	5.2	4.9	-0.3	-0.1	4.9	4.0	-0.8	5.0	3.2	-1.8		
- Vehicle Offences (incl. Interference)	1.2	15292	14236	-1056	-6.9	-3.9	1340	740	-44.8	3901	3075	-21.2	340	373	33	9.7	42	39	-7.1	94	117	24.5	2.2	2.6	0.4	3.4	3.1	5.3	2.1	2.4	3.8	1.4		
- Theft from a Vehicle	0.3	7710	7257	-453	-5.9	-3.7	12	653	357	-45.3	1846	1554	-15.8	99	125	26	26.3	14	4	-71.4	26	35	34.6	1.3	1.7	0.4	-0.1	2.1	1.1	-1.0	1.4	2.3	0.8	
- Theft of a Vehicle	2.9	5489	4853	-636	-11.6	-2.9	9	487	254	-47.8	1473	985	-33.1	206	170	-36	-17.5	20	16	-20.0	53	45	-15.1	3.8	3.5	-0.2	2.0							

Crime Tree Data – Rolling 12 Months to April

Table 3

Victim Based: Under Reported											Solved Outcomes											Solved Rates %											
Crime Type	% DA 2020	2019	2020	# diff.	% diff.	Z	CSS	1m Apr 19	1m Apr 20	Yr on Yr 1m % diff.	3m Apr 19	3m Apr 20	Yr on Yr 3m % diff.	2019	2020	# diff.	% diff.	1m Apr 19	1m Apr 20	Yr on Yr 1m % diff.	3m Apr 19	3m Apr 20	Yr on Yr 3m % diff.	2019	2020	% pt. diff.	Z	1m Apr 19	1m Apr 20	Yr on Yr 1m % pt. diff.	3m Apr 19	3m Apr 20	Yr on Yr 3m % pt. diff.
Racial/Religiously Aggravated Offences	0.9	1451	1579	128	8.8	-0.3		114	108	-5.3	377	361	-4.2	247	271	24	9.7	18	38	111.1	57	78	36.8	17.0	17.2	0.1	3.0	15.8	35.2	19.4	15.1	21.6	6.5
Hate Crime HO Definition	3.3	2718	3050	332	12.2	-0.8		215	185	-14.0	652	715	9.7	355	377	22	6.2	22	50	127.3	75	104	38.7	13.1	12.4	-0.7	3.5	10.2	27.0	16.8	11.5	14.5	3.0
Domestic Abuse	100.0	26416	30160	3744	14.2	0.4		2280	2267	-0.6	6855	7114	3.8	3303	3135	-168	-5.1	206	366	77.7	755	902	19.5	12.5	10.4	-2.1	0.8	9.0	16.1	7.1	11.0	12.7	1.7
- High Risk Domestic Abuse	100.0	2488	2644	156	6.3	-1.7		217	138	-36.4	648	558	-13.9	878	731	-147	-16.7	61	53	-13.1	191	163	-14.7	35.3	27.6	-7.6	0.4	28.1	38.4	10.3	29.5	29.2	-0.3
- Medium Risk Domestic Abuse	100.0	4811	4787	-24	-0.5	-2.3		418	292	-30.1	1213	950	-21.7	1080	963	-117	-10.8	67	100	49.3	244	239	-2.0	22.4	20.1	-2.3	2.4	16.0	34.2	18.2	20.1	25.2	5.0
- Standard Risk Domestic Abuse	100.0	17243	21105	3862	22.4	1.0		1405	1653	17.7	4439	5147	15.9	1146	1265	119	10.4	71	177	149.3	270	427	58.1	6.6	6.0	-0.7	1.5	5.1	10.7	5.7	6.1	8.3	2.2
- No Risk Assessment	100.0	1874	1624	-250	-13.3	0.0		240	184	-23.3	555	459	-17.3	199	176	-23	-11.6	7	36	414.3	50	73	46.0	10.6	10.8	0.2	3.9	2.9	19.6	16.6	9.0	15.9	6.9
State Based Crime											Solved Outcomes											Solved Rates %											
Crime Type	% DA 2020	2019	2020	# diff.	% diff.	Z	CSS	1m Apr 19	1m Apr 20	Yr on Yr 1m % diff.	3m Apr 19	3m Apr 20	Yr on Yr 3m % diff.	2019	2020	# diff.	% diff.	1m Apr 19	1m Apr 20	Yr on Yr 1m % diff.	3m Apr 19	3m Apr 20	Yr on Yr 3m % diff.	2019	2020	% pt. diff.	Z	1m Apr 19	1m Apr 20	Yr on Yr 1m % pt. diff.	3m Apr 19	3m Apr 20	Yr on Yr 3m % pt. diff.
Drug Offences	0.0	4269	6310	2041	47.8	3.2		428	749	75.0	1278	1801	40.9	3739	5658	1919	51.3	390	681	74.6	1141	1704	49.3	87.6	89.7	2.1	0.3	91.1	90.9	-0.2	89.3	94.6	5.3
- Trafficking of Drugs	0.0	752	976	224	29.8	2.2		60	106	76.7	201	279	38.8	510	703	193	37.8	46	92	100.0	143	243	69.9	67.8	72.0	4.2	1.3	76.7	86.8	10.1	71.1	87.1	16.0
- Possession of Drugs	0.0	3517	5334	1817	51.7	3.2		368	643	74.7	1077	1522	41.3	3229	4955	1726	53.5	344	589	71.2	998	1461	46.4	91.8	92.9	1.1	-0.1	93.5	91.6	-1.9	92.7	96.0	3.3
Possession of Weapons	0.8	1998	1407	-591	-29.6	-2.0		132	81	-38.6	425	268	-36.9	1358	813	-545	-40.1	58	63	8.6	257	185	-28.0	68.0	57.8	-10.2	1.0	43.9	77.8	33.8	60.5	69.0	8.6
Public Order	9.0	13621	15160	1539	11.3	0.2		1265	1118	-11.6	3718	3467	-6.8	2148	2076	-72	-3.4	170	205	20.6	528	538	1.9	15.8	13.7	-2.1	1.1	13.4	18.3	4.9	14.2	15.5	1.3
Miscellaneous Crimes against Society	17.0	3575	3696	121	3.4	0.0		312	287	-8.0	948	853	-10.0	610	733	123	20.2	50	62	24.0	147	196	33.3	17.1	19.8	2.8	1.1	16.0	21.6	5.6	15.5	23.0	7.5

Crime Severity Score (CSS) - Based on the ONS Crime Severity Score which replaces the Cambridge Harm Index - data are for the financial year 2018/19, (a total of 21 crime types have been ranked where scores are available).

The CSS excludes proactively generated crime detection by police i.e. State Based Crime, as these offences do not reliably measure harms experienced by the population. Rather, they measure the resources invested in catching offenders.

Yr on Yr 1m %/ % pt. diff. - compares the month of April 2020 with the month of April 2019.

Yr on Yr 3m %/ % pt. diff. - compares the three months to April 2020 with the three months to April 2019.

Z score - Standard Score over 1.96 or under -1.96. Standard Scores are used to calculate the probability of an event occurring within a normal distribution; they are also used to compare two scores from different normal distributions (for example the number of offences per police District). In this document, Standard Scores are calculated in the following way: (current month's figure, minus the average figure per month over the previous three years) divided by the Standard Deviation of the same three year period. Standard Deviation is a measure to determine how spread out figures are from the average or "mean" a large standard deviation indicates the data is widely spread; if small, the data will be more clustered together.