

Welcome to Essex County Fire and Rescue Service



Essex County
Fire & Rescue Service

April 2019

Contents

	Page no
About Essex County Fire and Rescue Service	3
Our mission	4
Our values	4
Useful contacts	5
Inspection schedule of activities	6
Our Service HQ	8
Service HQ site map	10
Wi-Fi access	11
Food and beverage facilities	11
Accessible facilities	12
Meeting rooms	13
Fire Station details	15

Essex County Fire and Rescue Service

Essex County Fire and Rescue Service (ECFRS) is one of the largest fire and rescue services in the country, serving a county which includes Stansted and Southend airports, Harwich seaport, Lakeside shopping centre, Coryton oil refinery, power stations, docks at Tilbury and parts of the M25 and M11 motorways.

ECFRS provides prevention, protection and emergency response services from 50 fire stations and an Urban Search and Rescue facility. The organisation's headquarters are at Kelvedon Park in Kelvedon, where the service also has a mobilising control centre.

Essex is a county of contrasts. It contains numerous ecologically important areas and manages one of the largest sections of coastline (350 miles) in the country.

There are various conservation areas and over 14,000 listed buildings. Essex has a rural and urban mix, featuring excellent transport links and leisure opportunities, which attract people to the area. Significant numbers of people settle in Essex, and employment opportunities attract economic migrants.

The service is governed by Essex Police Fire and Crime Commissioner, Fire and Rescue Authority.

Roger Hirst is the Police, Fire and Crime Commissioner (PFCC).



Our mission

Our mission is to make Essex a safe place to live, work and travel.

Our values

We are open, honest and trustworthy

We are courageous in everything we do

We work as one team

We are always professional

We value the contribution of all



Essex County
Fire & Rescue Service

Useful contacts

HMICFRS Service Contacts

Tracy King, Assistant Director
Business Planning and Performance
tracy.king@essex-fire.gov.uk
01376 576252 | 07909886606

Ian Adams, Group Manager
Service Improvement
ian.adams@essex-fire.ov.uk
01376 576395 | 07712922330

Service Leadership Team

Jo Turton

Chief Fire Officer/ Chief Executive
jo.turton@essex-fire.gov.uk
01376 576106 | 07592121566

Rick Hylton

Deputy Chief Fire Officer
rick.hylton@essex-fire.gov.uk
01376 576027 | 07970 945874

Dave Bill

Assistant Chief Fire Officer
Director of Innovation, Risk and Future
Development
dave.bill@essex-fire.gov.uk
01376576108 | 07711 797167

Moira Bruin

Assistant Chief Fire Officer
Director of Operations
moira.bruin@essex-fire.gov.uk
01376 576502 | 07824560929

Glenn McGuinness

Assistant Director of Finance
glenn.mcguinness@essex-fire.gov.uk
01376 576186 | 07825843094

Colette Black

Assistant Chief Executive Officer
People Values and Culture
colette.black@essex-fire.gov.uk
01376 576173 | 07917556964

Matt Furber

Assistant Chief Fire Officer
Integrated Risk Management Plan and
Service Improvement
matt.furber@essex-fire.gov.uk
01376 576501 | 07979708194

Karl Edwards

Director of Corporate Services
karl.edwards@essex-fire.gov.uk
01376 576025 | 07970 945861

Emily Cheyne

Head of Corporate Communications
and Marketing
emily.cheyne@essex-fire.gov.uk
01376 576127 | 07736198279

Service HQ reception

01376 576000

Inspection discovery schedule of activities

	09:00-10:30	10:45-12:15		13:00-14:30	14:45-16:15	16:30-17:00	19:00-21:00
Mon 29 April	Travel	Team briefing SHQ Kelvedon Park CM8 3HB FF41	Lunch	Control room WM Becky Swift, CM Gemma Kirk BH JC		Team brief/ debrief	On-call station visit - reality testing Braintree- 78 CM7 3JD BH JC
				Control room FFs Eunice Jeffrey, Kelly Bingham, Kristin Thorpe MR MB			On-call station visit - reality testing Maldon - 46 CM9 6SH MR MB
Tues 30 April	Free	Free	Lunch	Protect interview FF45 SM Justin Lockerbie JC BH	Protect Desktop reviews FF45 Martin Roebuck BH JC	Team brief/ debrief	Alternative stations for Monday 29 April: <ul style="list-style-type: none"> • Shoeburyness - 42 SS3 9BH • Hawkwell - 47 SS5 4EG • Tollesbury - 45 CM9 8RG • Tillingham – 44 CM0 7SQ
	Free	Free		Protect interview FF42 SM John Lloyd MB MR	Protect Desktop reviews FF42 Ken Acton MR MB		
Wed 1 May	Evidence Gathering Time	Grievance Review FF45 Jenny Smith, Gemma Elliot JC MR	Lunch	Skills (competencies) TASK Interview FF45 SM Mark Eaglestone MR JC	Skills (competencies) TASK Desktop FF45 Steve King JC MR	Team brief/ debrief	Alternative stations for Monday 29 April: <ul style="list-style-type: none"> • Shoeburyness - 42 SS3 9BH • Hawkwell - 47 SS5 4EG • Tollesbury - 45 CM9 8RG • Tillingham – 44 CM0 7SQ
	Risk Mapping, IRMP & response standards FF42 Ben Pilkington BH MB	Intranet/Internal comms Review FF42 Verne Lewis, Thomas Rodwell MB BH		Debriefing Review FF42 WM Jason Gould BH MB	H&S Interview FF42 Joanne Hampton MB BH		

	09:00-10:30	10:45-12:15		13:00-14:30	14:45-16:15	16:30-17:00	19:00-21:00
Thur 2 May	Prevent - Home Safety Interview FF42 Kieron Moir JC MB	Community Safety Interview FF42 Andrea Macalister MB JC	Lunch	Complaints & Compliments Review FF45 Chris Parkinson JC MB	Talent and Promotions Review FF45 Jane Brown MB JC	Team brief/ debrief	
	Prevent Desktop Review FF45 Deborah Gordon MR BH	Risk (SSRI) Interview FF42 SM Marc Diggory BH MR		Risk (SSRI) Desktop Review FF42 Chloe Garnham MR BH			

BH Bill Harvison
 MR Matt Reavill
 JC Julian Commons
 MB Mary Baxter

Our Service Headquarters



Travelling to our Service Headquarters, Kelvedon Park

By car

Kelvedon Park is situated on the A12 between Chelmsford and Colchester.

From the south (Chelmsford): Leave the A12 at junction 23 for Kelvedon and Tiptree and then turn right under the A12, joining the southbound entry slip road. Re-join the A12, keeping in the left hand lane. The entry slip road to Kelvedon Park is approximately 400 metres. There are signs to Fire HQ at junction 23 and as you approach the entry slip road to the site.

From the north (Colchester): After the on-slip from Kelvedon village, keep left and look out for the Fire HQ sign approximately 400 metres from the junction. Leave the A12 to the site.

By plane

Stansted Airport is approximately 25 miles from Kelvedon Park. The airport has trains to London Liverpool Street with connections to Witham or Kelvedon train station.

Southend Airport is approximately 30 miles from Kelvedon Park. From Southend Airport train station travel to Shenfield and change trains for connections to Witham or Kelvedon train station.

Gatwick Airport is approximately 72 miles from Kelvedon Park. The Gatwick Express train travels to Victoria train station, take the Circle Line underground from Liverpool Street, connection to Witham or Kelvedon train station.

Heathrow Airport is approximately 81 miles from Kelvedon Park. From Heathrow Airport travel to Paddington train station, take the Circle Line underground from Paddington to Liverpool Street, connections to Witham or Kelvedon station.

By Train

Kelvedon Park is located four miles from Witham train station and two miles from Kelvedon train station.

By Taxi

Knights taxis - 01376 518383

John's Taxi Service – 07762 437893

E-Cars of Kelvedon – 01376 573657

Heritage Cars of Feering – 01376 570738

Wanna Cab – 01376 572727

Parking

A controlled barrier protects the entrance to Kelvedon Park.
The barrier is open from 7.00am to 10.00am - Monday to Friday.

Outside of these hours, visitors will need to use the intercom to request entry.

The exit barrier is automatic.

Visitor parking is available on site at Kelvedon Park in Car Park A, B & C.

Blue Badge parking

Three disabled parking bays are available on your left before the main reception, if travelling towards Car Park A - a further six disabled parking bays are located in Car Park B.

Motorcycle bays

Ten motorcycle bays are located in Car Park A.

Cycle rack

A cycle rack with space for 12 bicycles can be found near Car Park B, leading up to our main reception.



Wi-Fi access

All guests can use 'GovWifi' to access the internet.

To sign up, send your email address or mobile number in the body of an email to sponsor@wifi.service.gov.uk.

The subject of the email can remain blank. You will then receive a text or email with a username and password.

Alternatively, text 'Go' to 07537417417 to receive a username and password.

Food and beverage facilities

Service canteen

The canteen is located on the first floor above reception. Hot and cold food is served daily, omelettes, paninis and sandwiches are made to order.

If visitors have any special dietary requirements please advise Kath Walker the Catering Supervisor.

Breakfast: 8.30am – 10.45am

Lunch: Noon – 2pm.

Please note the canteen is cash only.

The canteen has a water cooler and microwave facilities.

Vending machine

A vending machine selling canned drinks and confectionary is located on the ground floor, behind the main reception desk.

Tea and coffee

Tea and coffee points are available on each level of the building.

Accessible facilities and services

Access

There are disabled access ramps at the main entrance and at the rear of the Atrium. Both ramps have a high level landing and handrail as well as a lower handrail for wheelchair users. The main entrance also has automatic sliding doors.

Lifts

The lift is situated by the main reception area on the ground floor. You will be required to use your fob to activate the lift. The lift gives access to the first floor and is by the canteen area, and on the second floor, access to the Office of the Police Fire and Crime Commissioner (OPFCC). The lift has sufficient space for the easy manoeuvring of a wheelchair. An additional lift is available near our Service control.

Disabled emergency meeting points

There are two disabled refuges on the second floor in the OPFCC by each of the two staircases. There is also a refuge in the emergency staircase at the north east end of the building on the first floor. Evacuation chairs are also situated there.

Toilets

Toilets are in the Atrium/Reception area and on both floors of the Glass House.

Guide Dogs

Assistance dogs are welcome at our sites.

Emergency procedures

Floor plans of Kelvedon Park can be found on page 10 and 11. The plans include all emergency exits and the assembly point. Please take time to familiarise yourself with the building layout to identify your closest emergency exit and the best route to the assembly point.

In the event of an emergency, all staff and visitors must evacuate the building by the nearest available exit shown on the plans, then report to the Senior Fire Marshall (they will be wearing a high visibility vest) at the assembly point in the visitors car park. Please notify reception if you require assistance in the event of an evacuation.

Fire Procedure

The fire alarm is an intermittent klaxon alarm sounding throughout the buildings. We test the fire alarm on a weekly basis. The fire alarm will then sound for a period of 30 to 45 seconds. If the alarm sounds for longer, a full evacuation must take place.

First Aid

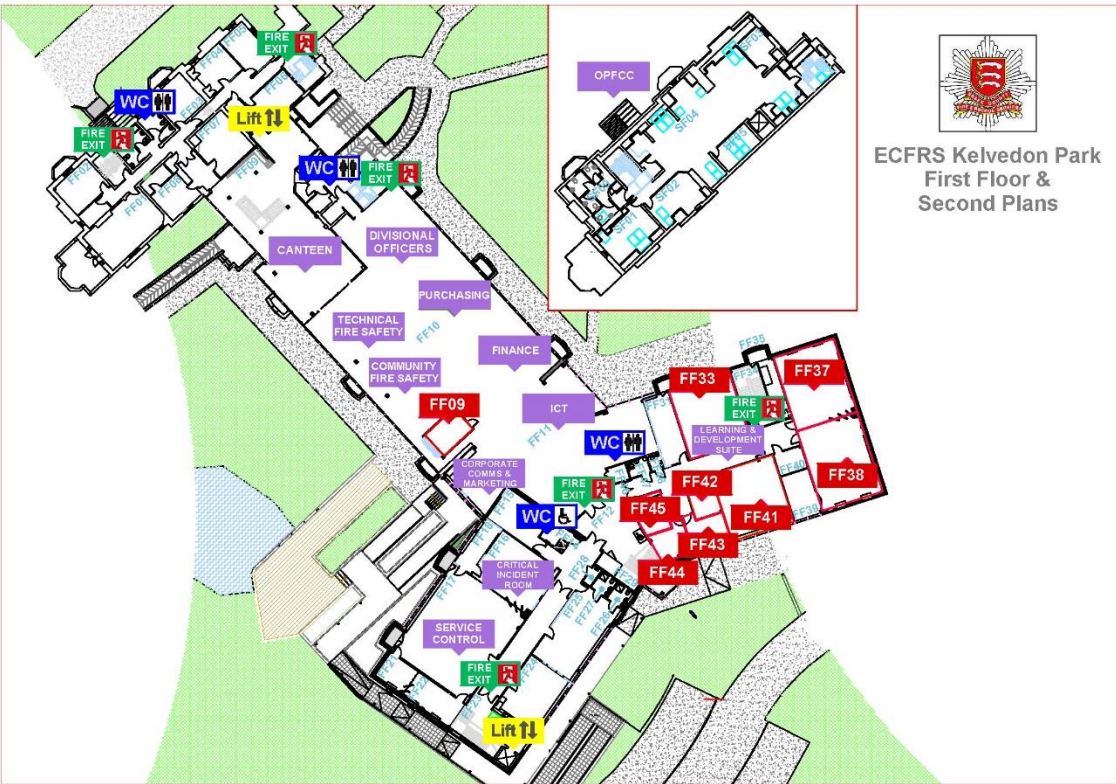
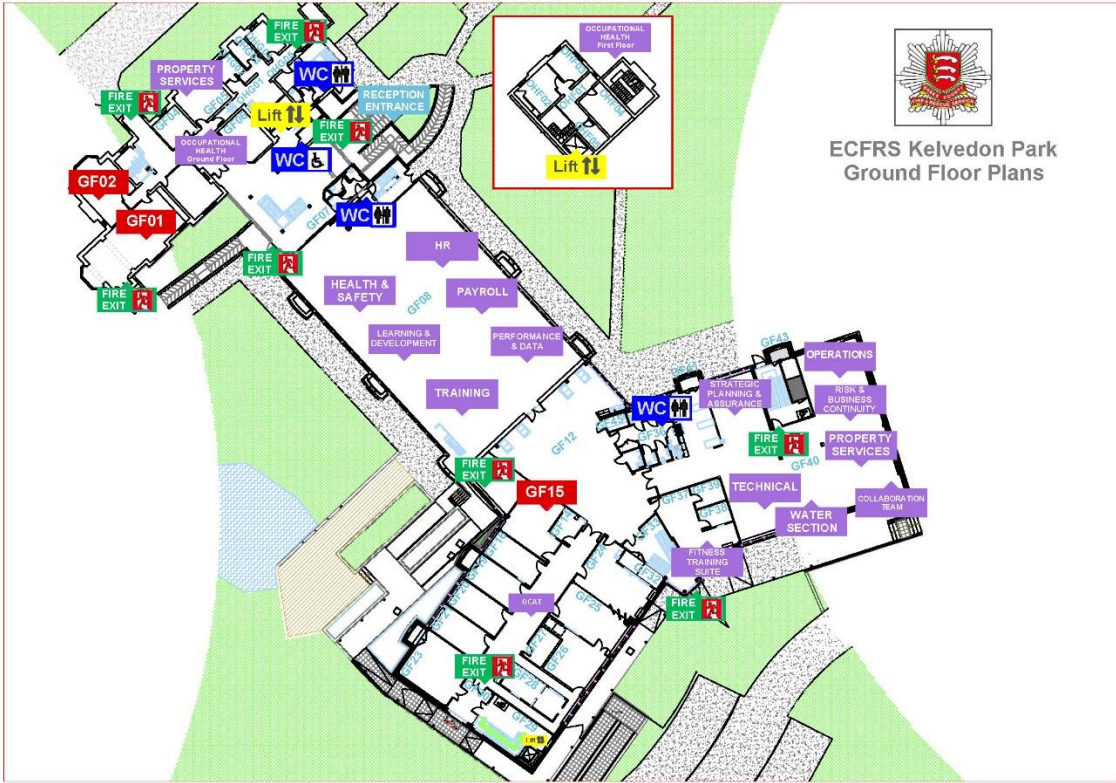
First Aid boxes and defibrillators are available on site and should you require the assistance of a first aider please contact reception 01376 576000

Meeting rooms

Location	Room Description	Capacity	Additional Information
GF01	Ground Floor 01 conference room – Manor House	30	SmartBoard, Projector, Conference Phone
GF02	Ground Floor 02 conference room – Manor House	10	SmartBoard, Projector, Conference Phone
GF15	Ground Floor 15 Silver Command	9	SmartBoard, 2 x Terminals , TV
FF33	First Floor 33 (Training Room I.T.)	18	touch Screen
FF37	First Floor 37 (Training Room Dual)	24	touch Screen
FF38	First Floor 38 (Training Room Dual)	24	touch Screen, Projector screen (when in dual room mode)
FF41	First Floor 41 (Training Room CERC)	18	touch Screen
FF42	First Floor 42 (Meeting Room 42)	6	touch Screen, 1 x Terminal, Conference Phone
FF43	First Floor 43 (Meeting Room 43)	6	touch Screen, 1 x Terminal, Conference Phone
FF44	First Floor 44 (Meeting Room 44)	6	touch Screen, 1 x Terminal, Conference Phone
FF45	First Floor 45 (Meeting Room 45)	6	touch Screen, 1 x Terminal, Conference Phone

Hearing loop audio systems are fitted as standard in all of our meeting rooms. Hearing systems are located at reception and in rooms FF33, FF37, FF38, FF41 and GF01.

If you need to book a meeting room, please contact reception on 01376 576337.



Station Station Manager	Duty system	Appliances	Drill night	Station postcode Distance and travel time from Service HQ CM8 3HB	Contact number	Group
Colchester - 10 Station Manager Danny Partridge	WT	Heavy Rescue Pump Water Tender Aerial Ladder Plat form		CO1 1XT 24 Miles 18 Minutes	01376 575100	North East
Dovercourt - 11 Station Manager Scott Meekings	Day Crew On Call	Rescue Pump Water Tender Swift Water Rescue Boat	Thurs	CO12 4JE 33 Miles 40 Minutes	01376 575110	North East
Clacton - 12 Station Manager Stuart Hare	WT On Call	Rescue Pump Water Tender Swift Water Rescue Boat	Thurs	CO12 4JE 30 Miles 35 Minutes	01376 575110	North East
Manningtree - 17 Station Manager Pete Neal	On Call	Rescue Pump 6x6 Off Rd Vehicle	Thurs	CO11 1AU 24 Miles 34 minutes	01376 575170	North East
Frinton - 18 Station Manager Stuart Hare	On Call	Rescue Pump Incident Command Unit 4x4 Ranger (ICU Support	Thurs	CO13 9NG 32 Miles 43 minutes	01376 575180	North East
Weeley - 19 Station Manager Stuart Hare	On Call	Rescue Pump	Thurs	CO16 9ED 27 Miles 31 Minutes	01376 575190	North East
Brightlingsea - 20 Station Manager Pete Neal	On Call	Rescue Pump	Thurs	CO7 0BP 29 Miles 37 Minutes	01376 575200	North East
Wivenhoe - 21 Station Manager Pete Neal	On Call	Rescue Pump	Thurs	CO7 9EU 17 Miles 32 Minutes	01376 575210	North East

Station Station Manager	Duty system	Appliances	Drill night	Station postcode Distance and travel time from Service HQ CM8 3HB	Contact number	Group
West Mersea - 22 Station Manager Pete Neal	On Call	Rescue Pump 4x4 Ranger (Water Rescue)	Thurs	CO5 8QT 16 Miles 31 Minutes	01376 575220	North East
Tiptree - 23 Station Manager Danny Partridge	On Call	Rescue Pump	Thurs	CO5 0SU 6 Miles 12 Minutes	01376 575230	North East
Coggeshall - 24 Station Manager Len Cleary	On Call	Rescue Pump Co- Responding Car	Thurs	CO6 1SX 7 Miles 14 Minutes	01376 575240	North West
Witham - 25 Station Manager Len Cleary	On Call	Rescue Pump Water Tender	Mon	CM8 1EW 3 Miles 10 Minutes	01376 575250	North West
Southend-on-Sea - 30 Station Manager Mark Eaglestone	WT	Rescue Pump Water Tender Aerial Ladder Platform		SS2 5PX 30 Miles 39 Minutes	01376 575300	South East
Leigh -on -Sea - 31 Station Manager Dave Walpole	WT	Rescue Pump Swift Water Rescue Boat		SS9 4AA 27 Miles 34 Minutes	01376 575310	South East
South Woodham Ferrers - 32 Station Manager Martyn Hare	Day Crew On Call	Rescue Pump Animal Rescue Unit 6x6 Off Rd Vehicle	Tues	CM3 5XH 22 Miles 26 Minutes	01376 575320	South East
Great Baddow - 33 Station Manager Simon Dedman	Day Crew On Call	Rescue Pump	Mon	CM2 7DR 13 Miles 14 Minutes	01376 575330	South East

Station Station Manager	Duty system	Appliances	Drill night	Station postcode Distance and travel time from Service HQ CM8 3HB	Contact number	Group
Chelmsford - 34 Station Manager Simon Dedman	WT	Heavy Rescue Pump Water Tender Aerial Ladder Platform		CM1 2QS 13 Miles 19 Minutes	01376 575340	South East
Rayleigh Weir - 35 Station Manager Martyn Hare	WT	Heavy Rescue Pump HazMat Unit Hose Laying Lorry		SS7 3TR 24 Miles 28 Minutes	01376 575350	South East
Shoeburyness - 42 Station Manager Mark Eaglestone	On Call	Rescue Pump	Mon	SS3 9BH 34 miles 50 Minutes	01376 575420	South East
Burnham-on-Crouch - 43 Station Manager Karen Nicoll	On Call	Rescue Pump	Mon	CM0 8DZ 21 miles 39 Minutes	01376 575430	North East
Tillingham - 44 Station Manager Karen Nicoll	On Call	Rescue Pump	Mon	CM0 7SQ 23 Miles 43 Minutes	01376 575440	North East
Tollesbury - 45 Station Manager Karen Nicoll	On Call	Rescue Pump	Mon	CM9 8RG 10 Miles 26 Minutes	01376 575450	North East
Maldon - 46 Station Manager Karen Nicoll	On Call	Rescue Pump Water Tender Environmental & Salvage Module Foam Module Welfare Module	Mon	CM9 6SH 8 Miles 16 Minutes	01376 575460	North East

Station Station Manager	Duty system	Appliances	Drill night	Station postcode Distance and travel time from Service HQ CM8 3HB	Contact number	Group
Hawkwell - 47 Station Manager Dave Walpole	On Call	Rescue Pump	Mon	SS5 4EG 24 Miles 33 Minutes	01376 575470	South East
Rochford - 49 Station Manager Dave Walpole	On Call	Rescue Pump	Tues	SS4 1BL 30 Miles 39 Minutes	01376 575490	South East
Grays - 50 Station Manager Justin Benson-Ryal	WT	Heavy Rescue Pump Water Tender Aerial Ladder Platform		RM17 5QS 38 Miles 41 Minutes	01376 575500	South West
Brentwood - 51 Station Manager Evan Jelliss	WT On Call	Heavy Rescue Pump Water Tender	Tues	CM14 4UZ 25 miles 30 Minutes	01376 575510	South West
Basildon - 52 Station Manager Craig McLellan	WT	Rescue Pump Water Tender Incident Command Unit		SS14 1EH 27 Miles 32 Minutes	01376 575520	South West
Canvey Island - 54 Station Manager Martyn Hare	On Call	Rescue Pump Water Tender	Tues	SS8 0JD 28 Miles 35 Minutes	01376 575540	South East
Orsett - 55 Station Manager Marc Diggory	WT	Rescue Pump Foam Module		RM16 3DU 32 Miles 38 Minutes	01376 575550	South West
Corringham - 66 Station Manager Marc Diggory	On Call	Rescue Pump Water Bowser	Tues	SS17 9BN 29 Miles 37 Minutes	01376 575660	South West

Station Station Manager	Duty system	Appliances	Drill night	Station postcode Distance and travel time from Service HQ CM8 3HB	Contact number	Group
Ingatestone -67 Station Manager Evan Jelliss	On Call	Rescue Pump	Tues	CM4 9EY 21 Miles 22 Minutes	01376 575670	South West
Billericay - 68 Station Manager Craig McLellan	On Call	Rescue Pump	Tues	CM4 9EY 21 Miles 29 Minutes	01376 575670	South West
Wickford - 69 Station Manager Craig McLellan	On Call	Rescue Pump	Tues	SS12 0QG 21 Miles 25 Minutes	01376 575690	South West
Harlow Central - 70 Station Manager Richie Green	WT	Rescue Pump Water Tender DIM Unit		CM20 1DU 32 Miles 50 Minutes	01376 575700	North west
Ongar - 71 Station Manager Evan Jelliss	On Call	Rescue Pump	Thurs	CM5 9DT 23 Miles 33 Minutes	01376 575710	South West
Loughton - 72 Station Manager Steve Wintrip	WT	Heavy Rescue pump		IG10 4PE 43 Miles 52 Minutes	01376 575720	South West
Waltham Abbey - 73 Station Manager Steve Wintrip	Day Crew On Call	Rescue Pump Swift Water Rescue Boat	Thurs	EN9 1PA 41 Miles 43 Minutes	01376 575730	South West
Braintree - 78 Station Manager Len Cleary	On Call	Rescue Pump Water Tender HazMat Unit	Mon	CM7 3JD 9 Miles 19 Minutes	01376 575780	North West

Station Station Manager	Duty system	Appliances	Drill night	Station postcode Distance and travel time from Service HQ CM8 3HB	Contact number	Group
Wethersfield - 79 Station Manager Richie Maddams	On call	Rescue Pump	Thurs	CM7 4BN 17 Miles 35 Minutes	01376 575790	North West
Sible Hedingham - 80 Station Manager Richie Maddams	On Call	Rescue Pump	Thurs	CO9 3NU 15 Miles 29 Minutes	01376 575800	North West
Halstead - 81 Station Manager Len Cleary	On Call	Rescue Pump Water Tender Water Bowser	Thurs	CO9 1EZ 12 Miles 27 Minutes	01376 575810	North West
Old Harlow - 82 Station Manager Richie Green	On Call	Rescue Pump	Thurs	CM17 0DN 30 Miles 50 Minutes	01376 575820	North West
Stansted - 83 Station Manager Adrian Richardson	On Call	Rescue Pump Foam Module 4x4 Ranger (Decon	Thurs	CM24 8AE 27 Miles 37 Minutes	01376 575830	North West
Newport - 84 Station Manager Adrian Richardson	On Call	Heavy Rescue Pump Ballistics Vehicle (also used for Co-Responding)	Thurs	CB11 3RU 33 Miles 37 Minutes	01376 575840	North West
Saffron Walden - 85 Station Manager Richie Maddams	On Call	Rescue Pump Water Tender	Thurs	CB10 1DR 32 Miles 51 Minutes	01376 575850	North West
Thaxted - 86 Station Manager Richie Maddams	On call	Rescue Pump	Thurs	CM6 2LP 25 Miles 36 Minutes	01376 575860	North west

Station Station Manager	Duty system	Appliances	Drill night	Station postcode Distance and travel time from Service HQ CM8 3HB	Contact number	Group
Great Dunmow - 87 Station Manager Adrian Richardson	On Call	Rescue Pump Water Tender	Thurs	CM6 1DA 18 Miles 26 Minutes	01376 575870	North West
Leaden Roding - 88 Station Manager Adrian Richardson	On Call	Rescue Pump	Thurs	CM6 1QB 21 Miles 33 Minutes	01376 575880	North west
Epping - 89 Station Manager Steve Wintrip	On Call	Rescue pump	Thurs	CM16 4AF 30 Miles 46 Minutes	01376 575890	North West

Essex County Fire and Rescue Service Headquarters

Kelvedon Park

Rivenhall

Witham

Essex

CM8 3HB

Tel: 01376 576000

www.essex-fire.gov.uk