

Corporate Services

Essex Police Performance Summary to March 2016



Date: 12th April 2016

Unit: Performance Information Unit

Contact: Katherine Thompson

Corporate Services: Performance Summary

Essex Police Performance Summary: To March 2016

1. Introduction

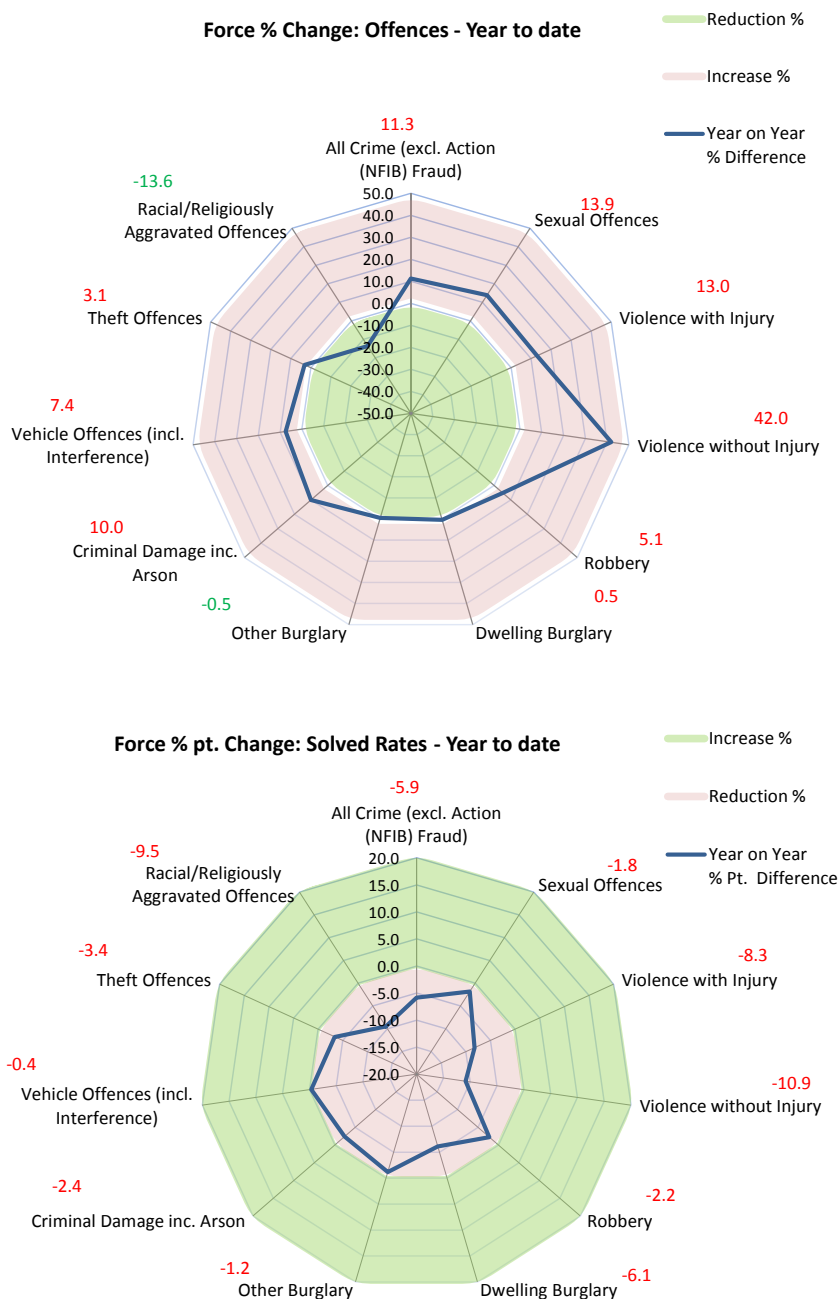
This performance summary is designed to pictorially represent how individual districts are performing within each crime type.

The report includes:

- Charts to show the cumulative (from April) percentage differences between the number of offences, and the percentage pt. differences between the solved rates, in each district, for the current period compared to the same period the previous year.
- Tables of data relating to cumulative figures for this district.

Solved Rate: Essex Police could potentially still be under-extracting the number of crimes that have been solved.

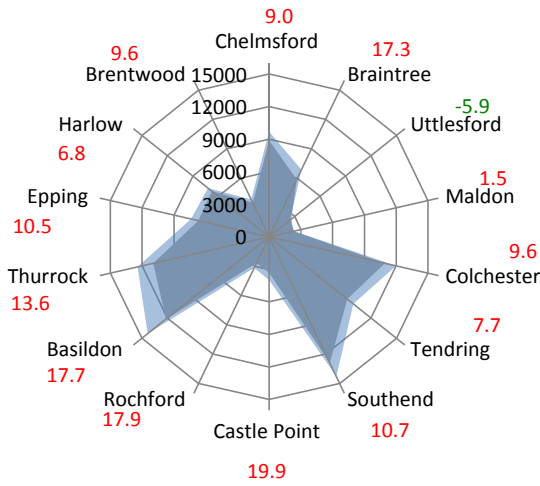
2. Current Position



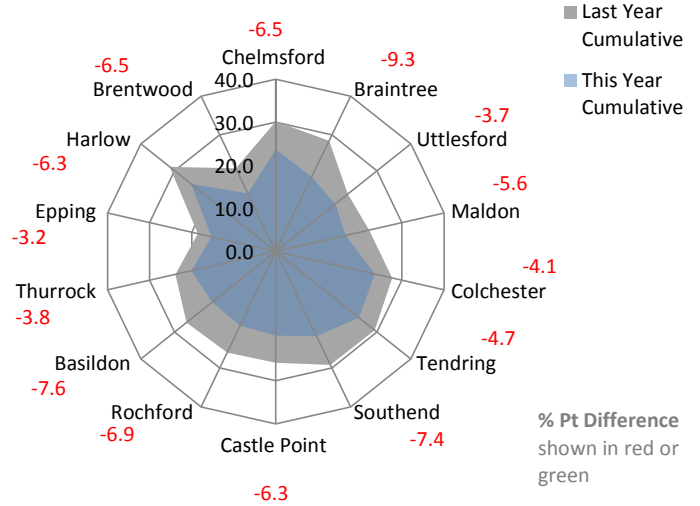
Corporate Services: Performance Summary

Essex Police Performance Summary: To March 2016

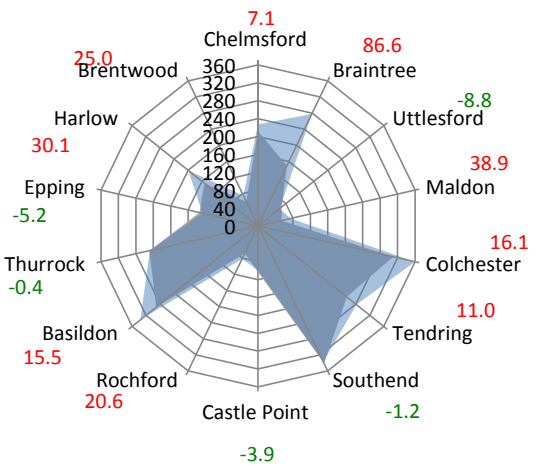
All Crime Offences - Year to date



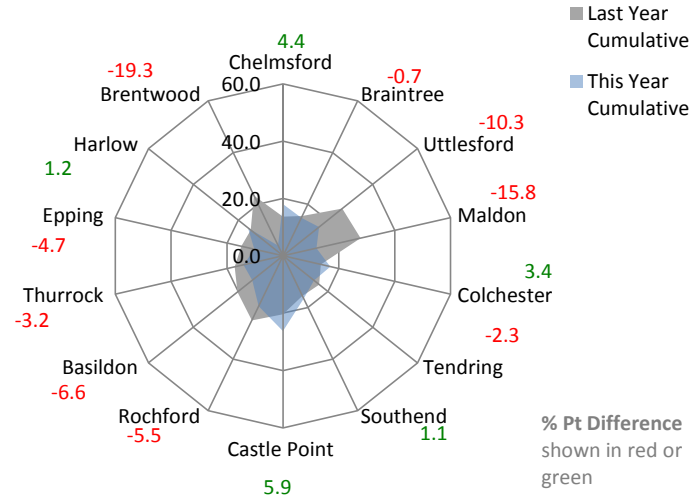
All Crime Solved Rate - Year to date



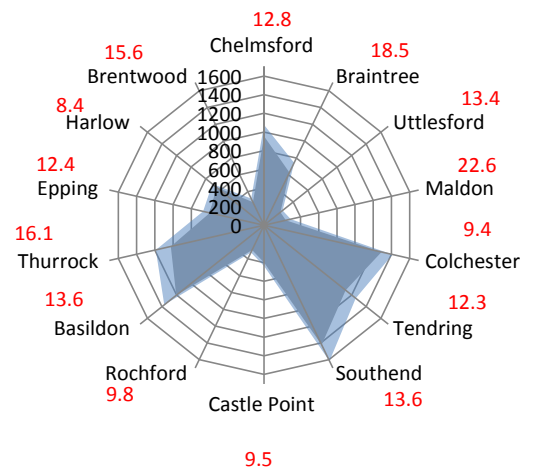
Sexual Offences - Year to date



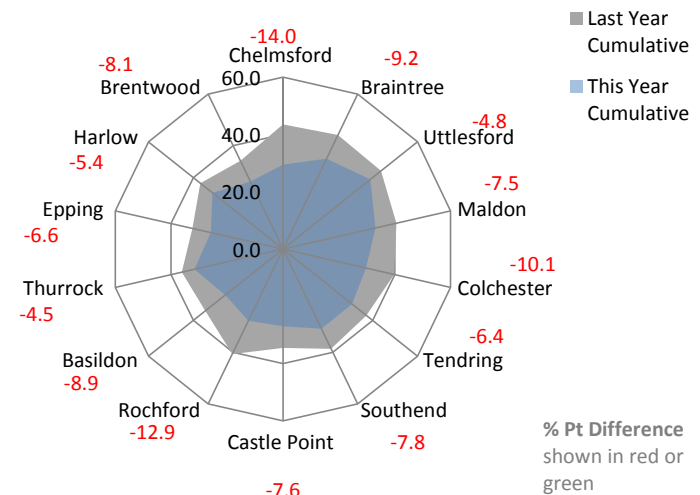
Sexual Offences Solved Rate - Year to date



Violence with Injury Offences - Year to date



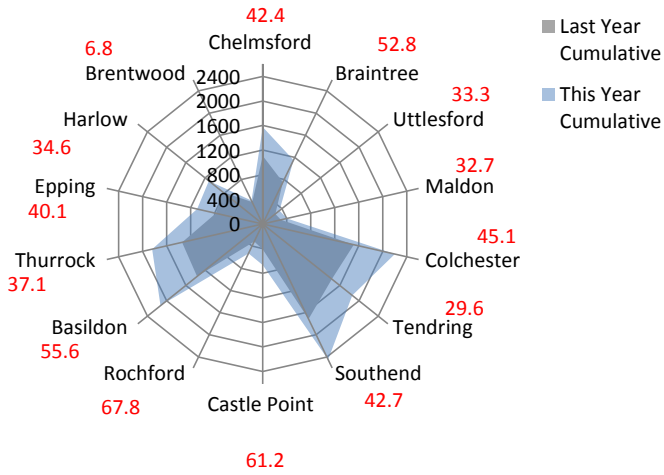
Violence with Injury Solved Rate - Year to date



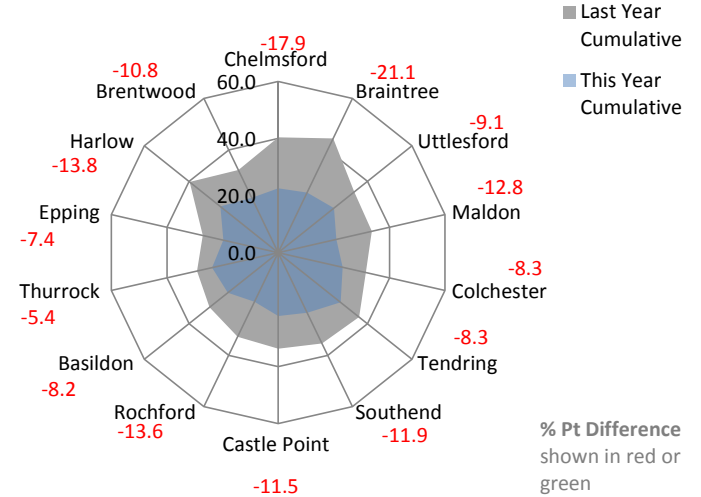
Corporate Services: Performance Summary

Essex Police Performance Summary: To March 2016

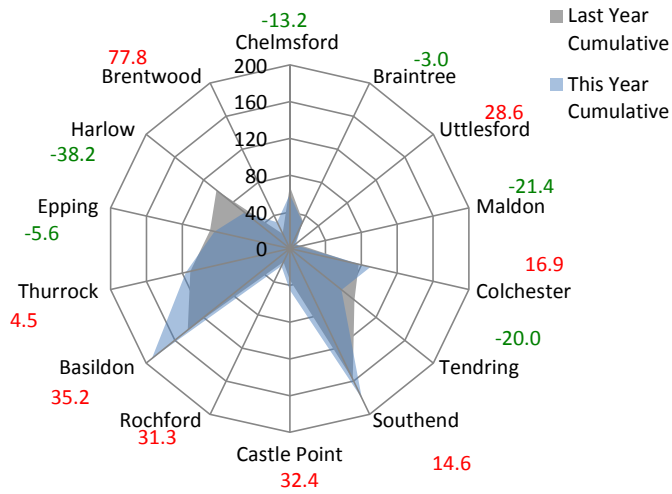
Violence without Injury Offences - Year to date



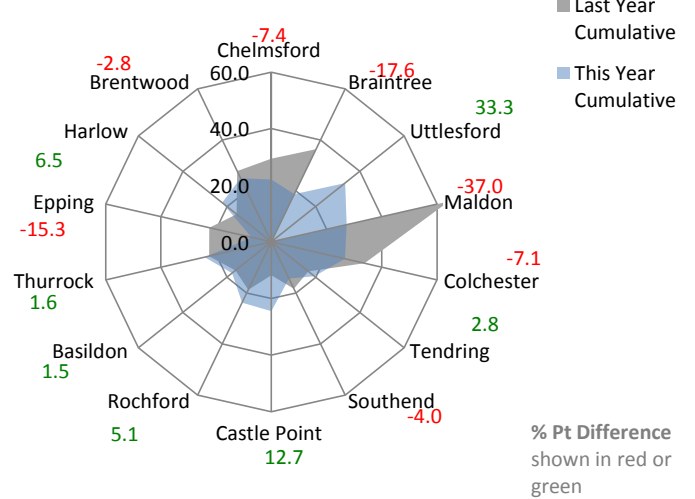
Violence without Injury Solved Rate - Year to date



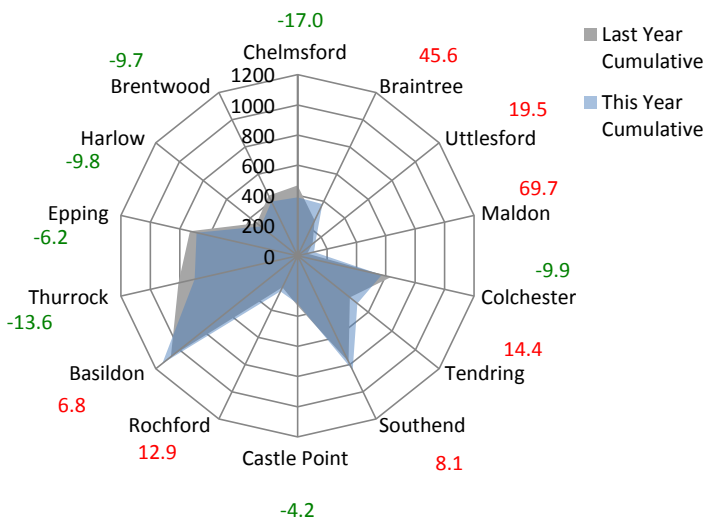
Robbery Offences - Year to date



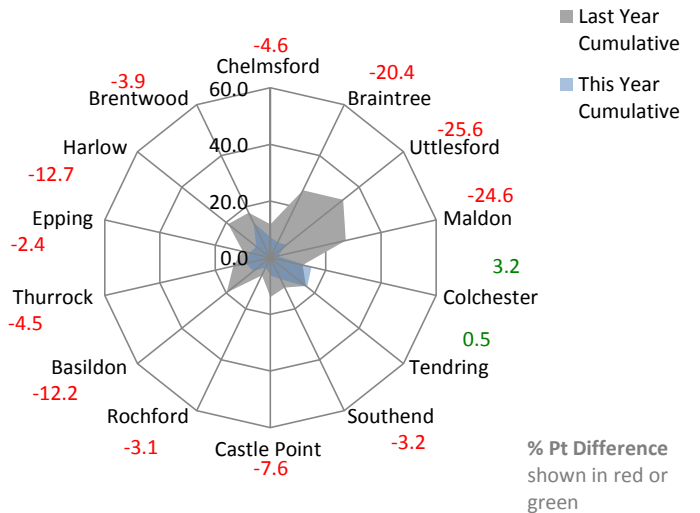
Robbery Solved Rate - Year to date



Dwelling Burglary Offences - Year to date



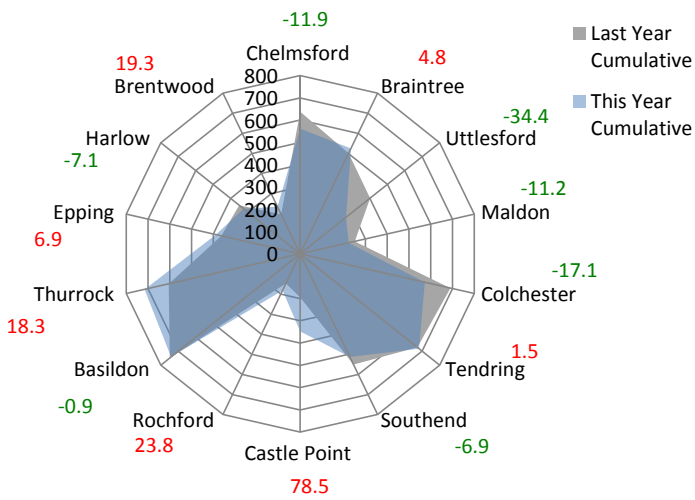
Dwelling Burglary Solved Rate - Year to date



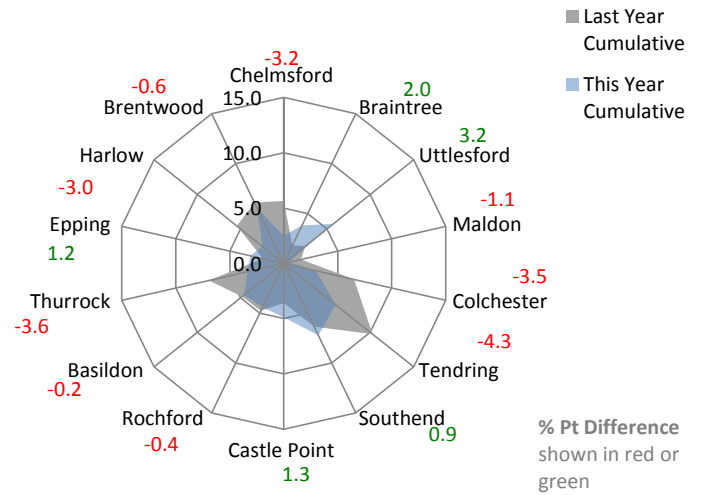
Corporate Services: Performance Summary

Essex Police Performance Summary: To March 2016

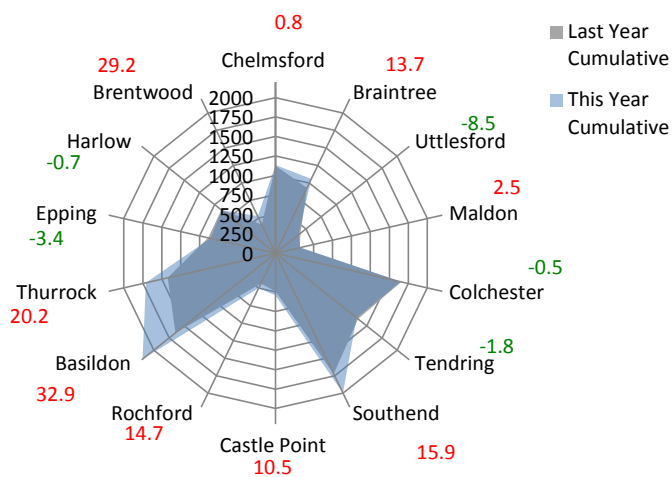
Other Burglary Offences - Year to date



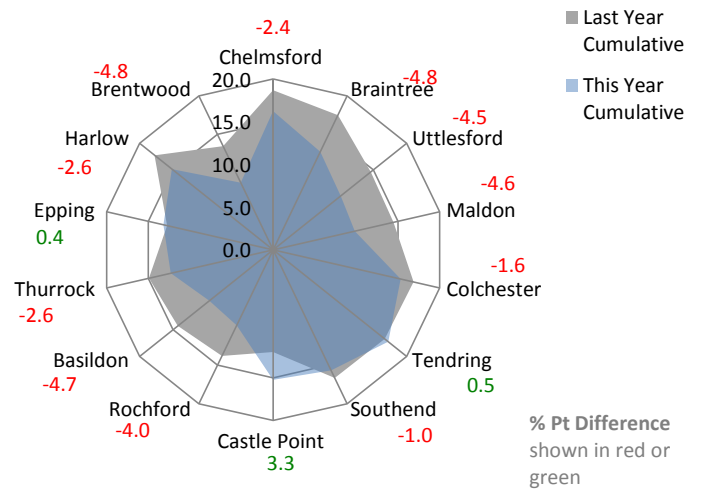
Other Burglary Solved Rate - Year to date



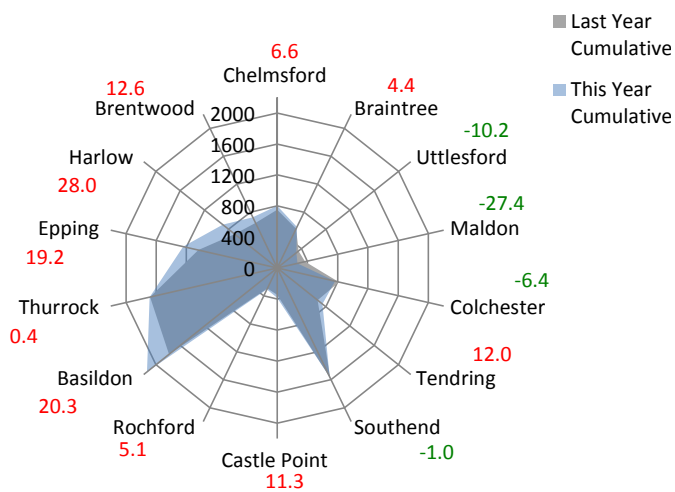
Criminal Damage Offences - Year to date



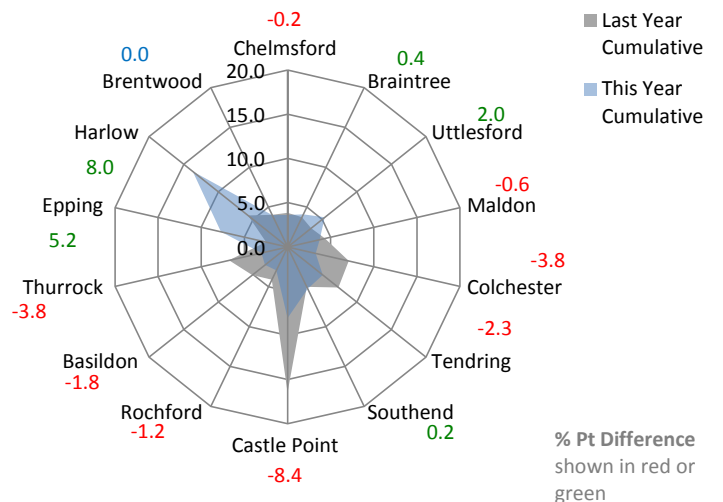
Criminal Damage Solved Rate - Year to date



Vehicle Offences - Year to date



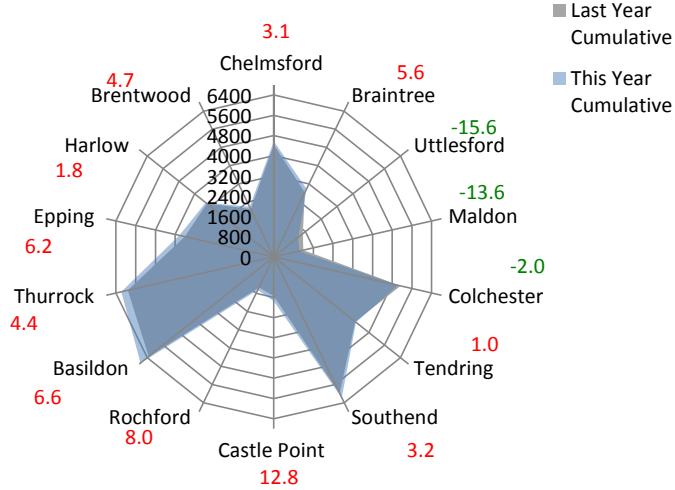
Vehicle Offences Solved Rate - Year to date



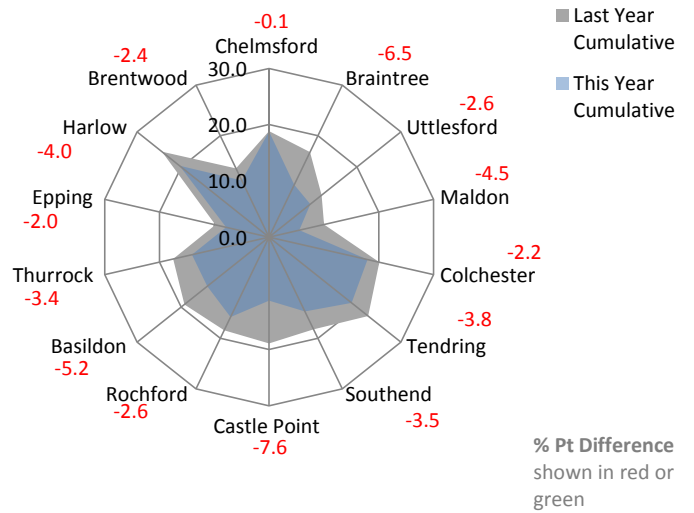
Corporate Services: Performance Summary

Essex Police Performance Summary: To March 2016

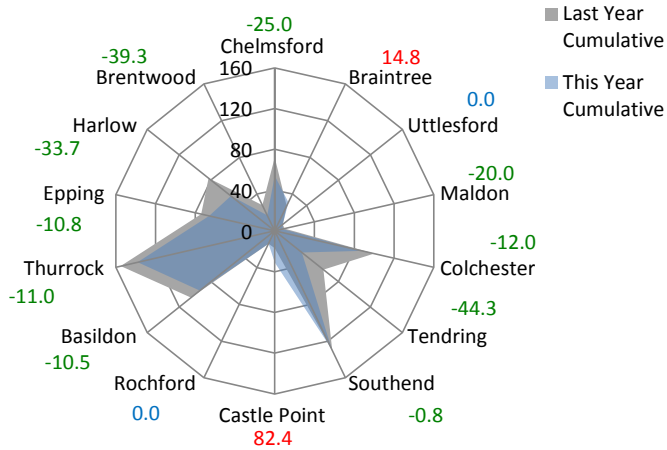
Theft Offences - Year to date



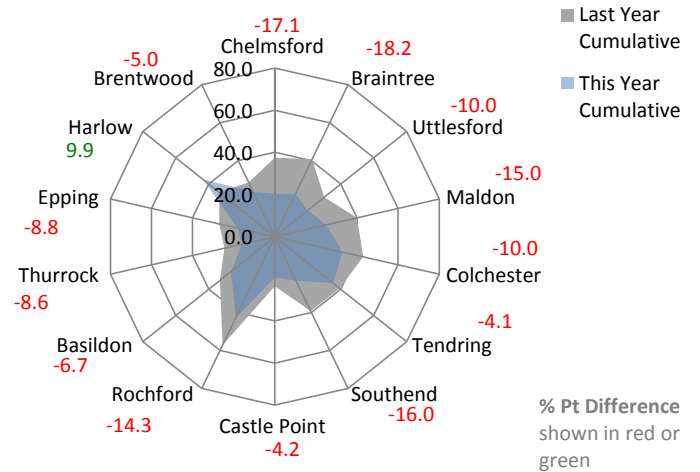
Theft Offences Solved Rate - Year to date



Racial / Religiously Aggravated Offences - Year to date % Difference



Racial/Religiously Aggravated Offences Solved Rate - Year to date



Corporate Services: Performance Summary
Essex Police Performance Summary

Force
Cumulative Year to March

Top Level	Offences				Outcomes				Solved Rates %		
Crime Type	2015	2016	# diff.	% diff.	2015	2016	# diff.	% diff.	2015	2016	% pt. diff.
Anti-Social Behaviour (incidents)	56506	52732	-3774	-6.7	-	-	-	-	-	-	-
All Crime (excl. Action (NFIB) Fraud)	99740	111022	11282	11.3	27042	23597	-3445	-12.7	27.1	21.3	-5.9
- State Based Crime	9793	11129	1336	13.6	6870	5588	-1282	-18.7	70.2	50.2	-19.9
- Victim Based Crime	89947	99893	9946	11.1	20172	18009	-2163	-10.7	22.4	18.0	-4.4
Victim Based Crime	Offences				Outcomes				Solved Rates %		
Crime Type	2015	2016	# diff.	% diff.	2015	2016	# diff.	% diff.	2015	2016	% pt. diff.
Violence Against the Person	22913	29558	6645	29.0	8281	7724	-557	-6.7	36.1	26.1	-10.0
- Homicide	11	34	23	209.1	7	20	13	185.7	63.6	58.8	-4.8
- Violence with Injury	10336	11680	1344	13.0	3950	3500	-450	-11.4	38.2	30.0	-8.3
- Violence without Injury	12566	17844	5278	42.0	4324	4204	-120	-2.8	34.4	23.6	-10.9
Sexual Offences	2453	2793	340	13.9	422	430	8	1.9	17.2	15.4	-1.8
- Rape	887	986	99	11.2	130	112	-18	-13.8	14.7	11.4	-3.3
- Rape - Under 16 yrs	287	327	40	13.9	61	57	-4	-6.6	21.3	17.4	-3.8
- Rape - Over 16 yrs	600	659	59	9.8	69	55	-14	-20.3	11.5	8.3	-3.2
- Other Sexual Offences	1566	1807	241	15.4	292	318	26	8.9	18.6	17.6	-1.0
Robbery	959	1008	49	5.1	207	195	-12	-5.8	21.6	19.3	-2.2
- Robbery of business property	105	102	-3	-2.9	28	44	16	57.1	26.7	43.1	16.5
- Robbery of Personal Property	854	906	52	6.1	179	151	-28	-15.6	21.0	16.7	-4.3
Theft Offences	49890	51425	1535	3.1	9078	7619	-1459	-16.1	18.2	14.8	-3.4
- Burglary	13054	13054	0	0.0	1358	875	-483	-35.6	10.4	6.7	-3.7
- Dwelling Burglary	6742	6774	32	0.5	1020	612	-408	-40.0	15.1	9.0	-6.1
- Other Burglary	6312	6280	-32	-0.5	338	263	-75	-22.2	5.4	4.2	-1.2
- Vehicle Offences (incl. Interference)	11618	12478	860	7.4	635	636	1	0.2	5.5	5.1	-0.4
- Theft from Vehicle	7508	7873	365	4.9	243	301	58	23.9	3.2	3.8	0.6
- Theft of Motor Vehicle	2936	3327	391	13.3	356	286	-70	-19.7	12.1	8.6	-3.5
- Vehicle Interference	1174	1278	104	8.9	36	49	13	36.1	3.1	3.8	0.8
- Theft	25218	25893	675	2.7	7085	6108	-977	-13.8	28.1	23.6	-4.5
- Theft from the Person	1345	1729	384	28.6	38	59	21	55.3	2.8	3.4	0.6
- Theft of Pedal Cycle	2215	2209	-6	-0.3	99	84	-15	-15.2	4.5	3.8	-0.7
- Shoplifting	9240	9997	757	8.2	5444	4878	-566	-10.4	58.9	48.8	-10.1
- Other Theft	12418	11958	-460	-3.7	1504	1087	-417	-27.7	12.1	9.1	-3.0
Criminal Damage inc. Arson	13732	15109	1377	10.0	2184	2041	-143	-6.5	15.9	13.5	-2.4
- Criminal Damage	13281	14621	1340	10.1	2121	2007	-114	-5.4	16.0	13.7	-2.2
- Arson	451	488	37	8.2	63	34	-29	-46.0	14.0	7.0	-7.0
Racial/Religiously Aggravated Offences	894	772	-122	-13.6	311	195	-116	-37.3	34.8	25.3	-9.5
State Based Crime	Offences				Outcomes				Solved Rates %		
Crime Type	2015	2016	# diff.	% diff.	2015	2016	# diff.	% diff.	2015	2016	% pt. diff.
Drug Offences	3705	2739	-966	-26.1	3551	2486	-1065	-30.0	95.8	90.8	-5.1
- Trafficking of Drugs	681	582	-99	-14.5	605	441	-164	-27.1	88.8	75.8	-13.1
- Possession of Drugs	3024	2157	-867	-28.7	2946	2045	-901	-30.6	97.4	94.8	-2.6
Possession of Weapons	894	1005	111	12.4	754	765	11	1.5	84.3	76.1	-8.2
Public Order	3950	5801	1851	46.9	1905	1751	-154	-8.1	48.2	30.2	-18.0
Miscellaneous Crimes against Society	1244	1584	340	27.3	660	586	-74	-11.2	53.1	37.0	-16.1

Corporate Services: Performance Summary
Essex Police Performance Summary

Chelmsford
Cumulative Year to March

Top Level	Offences				Outcomes				Solved Rates %		
Crime Type	2015	2016	# diff.	% diff.	2015	2016	# diff.	% diff.	2015	2016	% pt. diff.
Anti-Social Behaviour (incidents)	4543	4247	-296	-6.5	-	-	-	-	-	-	-
All Crime (excl. Action (NFIB) Fraud)	8885	9683	798	9.0	2682	2294	-388	-14.5	30.2	23.7	-6.5
- State Based Crime	984	1041	57	5.8	723	524	-199	-27.5	73.5	50.3	-23.1
- Victim Based Crime	7901	8642	741	9.4	1959	1770	-189	-9.6	24.8	20.5	-4.3
Victim Based Crime	Offences				Outcomes				Solved Rates %		
Crime Type	2015	2016	# diff.	% diff.	2015	2016	# diff.	% diff.	2015	2016	% pt. diff.
Violence Against the Person	2063	2653	590	28.6	864	673	-191	-22.1	41.9	25.4	-16.5
- Homicide	3	2	-1	-33.3	2	1	-1	-50.0	66.7	50.0	-16.7
- Violence with Injury	954	1076	122	12.8	415	317	-98	-23.6	43.5	29.5	-14.0
- Violence without Injury	1106	1575	469	42.4	447	355	-92	-20.6	40.4	22.5	-17.9
Sexual Offences	212	227	15	7.1	29	41	12	41.4	13.7	18.1	4.4
- Rape	84	87	3	3.6	10	17	7	70.0	11.9	19.5	7.6
- Rape - Under 16 yrs	25	23	-2	-8.0	3	6	3	100.0	12.0	26.1	14.1
- Rape - Over 16 yrs	59	64	5	8.5	7	11	4	57.1	11.9	17.2	5.3
- Other Sexual Offences	128	140	12	9.4	19	24	5	26.3	14.8	17.1	2.3
Robbery	68	59	-9	-13.2	20	13	-7	-35.0	29.4	22.0	-7.4
- Robbery of business property	8	7	-1	-12.5	2	2	0	0.0	25.0	28.6	3.6
- Robbery of Personal Property	60	52	-8	-13.3	18	11	-7	-38.9	30.0	21.2	-8.8
Theft Offences	4435	4571	136	3.1	836	859	23	2.8	18.9	18.8	-0.1
- Burglary	1104	949	-155	-14.0	91	42	-49	-53.8	8.2	4.4	-3.8
- Dwelling Burglary	466	387	-79	-17.0	55	28	-27	-49.1	11.8	7.2	-4.6
- Other Burglary	638	562	-76	-11.9	36	14	-22	-61.1	5.6	2.5	-3.2
- Vehicle Offences (incl. Interference)	752	802	50	6.6	29	29	0	0.0	3.9	3.6	-0.2
- Theft from Vehicle	508	462	-46	-9.1	6	14	8	133.3	1.2	3.0	1.8
- Theft of Motor Vehicle	179	259	80	44.7	23	14	-9	-39.1	12.8	5.4	-7.4
- Vehicle Interference	65	81	16	24.6	0	1	1	-	0.0	1.2	1.2
- Theft	2579	2820	241	9.3	716	788	72	10.1	27.8	27.9	0.2
- Theft from the Person	186	210	24	12.9	6	9	3	50.0	3.2	4.3	1.1
- Theft of Pedal Cycle	350	318	-32	-9.1	15	9	-6	-40.0	4.3	2.8	-1.5
- Shoplifting	867	1197	330	38.1	545	691	146	26.8	62.9	57.7	-5.1
- Other Theft	1176	1095	-81	-6.9	150	79	-71	-47.3	12.8	7.2	-5.5
Criminal Damage inc. Arson	1123	1132	9	0.8	210	184	-26	-12.4	18.7	16.3	-2.4
- Criminal Damage	1088	1081	-7	-0.6	201	182	-19	-9.5	18.5	16.8	-1.6
- Arson	35	51	16	45.7	9	2	-7	-77.8	25.7	3.9	-21.8
Racial/Religiously Aggravated Offences	72	54	-18	-25.0	27	11	-16	-59.3	37.5	20.4	-17.1
State Based Crime	Offences				Outcomes				Solved Rates %		
Crime Type	2015	2016	# diff.	% diff.	2015	2016	# diff.	% diff.	2015	2016	% pt. diff.
Drug Offences	439	317	-122	-27.8	415	296	-119	-28.7	94.5	93.4	-1.2
- Trafficking of Drugs	48	50	2	4.2	37	44	7	18.9	77.1	88.0	10.9
- Possession of Drugs	391	267	-124	-31.7	378	252	-126	-33.3	96.7	94.4	-2.3
Possession of Weapons	54	56	2	3.7	47	42	-5	-10.6	87.0	75.0	-12.0
Public Order	355	492	137	38.6	178	113	-65	-36.5	50.1	23.0	-27.2
Miscellaneous Crimes against Society	136	176	40	29.4	83	73	-10	-12.0	61.0	41.5	-19.6

Corporate Services: Performance Summary
Essex Police Performance Summary

Braintree
Cumulative Year to March

Top Level	Offences				Outcomes				Solved Rates %		
Crime Type	2015	2016	# diff.	% diff.	2015	2016	# diff.	% diff.	2015	2016	% pt. diff.
Anti-Social Behaviour (incidents)	3780	3440	-340	-9.0	-	-	-	-	-	-	-
All Crime (excl. Action (NFIB) Fraud)	5852	6864	1012	17.3	1668	1317	-351	-21.0	28.5	19.2	-9.3
- State Based Crime	532	615	83	15.6	383	298	-85	-22.2	72.0	48.5	-23.5
- Victim Based Crime	5320	6249	929	17.5	1285	1019	-266	-20.7	24.2	16.3	-7.8
Victim Based Crime	Offences				Outcomes				Solved Rates %		
Crime Type	2015	2016	# diff.	% diff.	2015	2016	# diff.	% diff.	2015	2016	% pt. diff.
Violence Against the Person	1382	1897	515	37.3	613	529	-84	-13.7	44.4	27.9	-16.5
- Homicide	1	2	1	100.0	1	0	-1	-100.0	100.0	0.0	-100.0
- Violence with Injury	627	743	116	18.5	277	260	-17	-6.1	44.2	35.0	-9.2
- Violence without Injury	754	1152	398	52.8	335	269	-66	-19.7	44.4	23.4	-21.1
Sexual Offences	149	278	129	86.6	23	41	18	78.3	15.4	14.7	-0.7
- Rape	53	65	12	22.6	8	10	2	25.0	15.1	15.4	0.3
- Rape - Under 16 yrs	19	33	14	73.7	8	9	1	12.5	42.1	27.3	-14.8
- Rape - Over 16 yrs	34	32	-2	-5.9	0	1	1	-	0.0	3.1	3.1
- Other Sexual Offences	96	213	117	121.9	15	31	16	106.7	15.6	14.6	-1.1
Robbery	33	32	-1	-3.0	12	6	-6	-50.0	36.4	18.8	-17.6
- Robbery of business property	7	6	-1	-14.3	5	4	-1	-20.0	71.4	66.7	-4.8
- Robbery of Personal Property	26	26	0	0.0	7	2	-5	-71.4	26.9	7.7	-19.2
Theft Offences	2825	2983	158	5.6	474	308	-166	-35.0	16.8	10.3	-6.5
- Burglary	762	905	143	18.8	78	43	-35	-44.9	10.2	4.8	-5.5
- Dwelling Burglary	261	380	119	45.6	69	23	-46	-66.7	26.4	6.1	-20.4
- Other Burglary	501	525	24	4.8	9	20	11	122.2	1.8	3.8	2.0
- Vehicle Offences (incl. Interference)	562	587	25	4.4	21	24	3	14.3	3.7	4.1	0.4
- Theft from Vehicle	409	409	0	0.0	8	10	2	25.0	2.0	2.4	0.5
- Theft of Motor Vehicle	104	118	14	13.5	12	13	1	8.3	11.5	11.0	-0.5
- Vehicle Interference	49	60	11	22.4	1	1	0	0.0	2.0	1.7	-0.4
- Theft	1501	1491	-10	-0.7	375	241	-134	-35.7	25.0	16.2	-8.8
- Theft from the Person	76	94	18	23.7	4	2	-2	-50.0	5.3	2.1	-3.1
- Theft of Pedal Cycle	132	167	35	26.5	5	4	-1	-20.0	3.8	2.4	-1.4
- Shoplifting	441	446	5	1.1	245	172	-73	-29.8	55.6	38.6	-17.0
- Other Theft	852	784	-68	-8.0	121	63	-58	-47.9	14.2	8.0	-6.2
Criminal Damage inc. Arson	931	1059	128	13.7	163	135	-28	-17.2	17.5	12.7	-4.8
- Criminal Damage	901	1029	128	14.2	158	132	-26	-16.5	17.5	12.8	-4.7
- Arson	30	30	0	0.0	5	3	-2	-40.0	16.7	10.0	-6.7
Racial/Religiously Aggravated Offences	27	31	4	14.8	11	7	-4	-36.4	40.7	22.6	-18.2
State Based Crime	Offences				Outcomes				Solved Rates %		
Crime Type	2015	2016	# diff.	% diff.	2015	2016	# diff.	% diff.	2015	2016	% pt. diff.
Drug Offences	222	148	-74	-33.3	214	132	-82	-38.3	96.4	89.2	-7.2
- Trafficking of Drugs	21	22	1	4.8	19	11	-8	-42.1	90.5	50.0	-40.5
- Possession of Drugs	201	126	-75	-37.3	195	121	-74	-37.9	97.0	96.0	-1.0
Possession of Weapons	22	34	12	54.5	18	23	5	27.8	81.8	67.6	-14.2
Public Order	218	352	134	61.5	106	121	15	14.2	48.6	34.4	-14.2
Miscellaneous Crimes against Society	70	81	11	15.7	45	22	-23	-51.1	64.3	27.2	-37.1

Corporate Services: Performance Summary
Essex Police Performance Summary

Uttlesford
Cumulative Year to March

Top Level	Offences				Outcomes				Solved Rates %		
Crime Type	2015	2016	# diff.	% diff.	2015	2016	# diff.	% diff.	2015	2016	% pt. diff.
Anti-Social Behaviour (incidents)	1371	1180	-191	-13.9	-	-	-	-	-	-	-
All Crime (excl. Action (NFIB) Fraud)	2608	2453	-155	-5.9	557	433	-124	-22.3	21.4	17.7	-3.7
- State Based Crime	174	168	-6	-3.4	117	79	-38	-32.5	67.2	47.0	-20.2
- Victim Based Crime	2434	2285	-149	-6.1	440	354	-86	-19.5	18.1	15.5	-2.6
Victim Based Crime	Offences				Outcomes				Solved Rates %		
Crime Type	2015	2016	# diff.	% diff.	2015	2016	# diff.	% diff.	2015	2016	% pt. diff.
Violence Against the Person	485	604	119	24.5	187	187	0	0.0	38.6	31.0	-7.6
- Homicide	0	2	2	-	0	1	1	-	-	50.0	-
- Violence with Injury	224	254	30	13.4	98	99	1	1.0	43.8	39.0	-4.8
- Violence without Injury	261	348	87	33.3	89	87	-2	-2.2	34.1	25.0	-9.1
Sexual Offences	68	62	-6	-8.8	18	10	-8	-44.4	26.5	16.1	-10.3
- Rape	24	34	10	41.7	7	3	-4	-57.1	29.2	8.8	-20.3
- Rape - Under 16 yrs	10	17	7	70.0	4	1	-3	-75.0	40.0	5.9	-34.1
- Rape - Over 16 yrs	14	17	3	21.4	3	2	-1	-33.3	21.4	11.8	-9.7
- Other Sexual Offences	44	28	-16	-36.4	11	7	-4	-36.4	25.0	25.0	0.0
Robbery	7	9	2	28.6	0	3	3	-	0.0	33.3	33.3
- Robbery of business property	1	1	0	0.0	0	0	0	-	0.0	0.0	0.0
- Robbery of Personal Property	6	8	2	33.3	0	3	3	-	0.0	37.5	37.5
Theft Offences	1464	1235	-229	-15.6	175	116	-59	-33.7	12.0	9.4	-2.6
- Burglary	529	416	-113	-21.4	52	26	-26	-50.0	9.8	6.3	-3.6
- Dwelling Burglary	128	153	25	19.5	42	11	-31	-73.8	32.8	7.2	-25.6
- Other Burglary	401	263	-138	-34.4	10	15	5	50.0	2.5	5.7	3.2
- Vehicle Offences (incl. Interference)	352	316	-36	-10.2	12	17	5	41.7	3.4	5.4	2.0
- Theft from Vehicle	251	225	-26	-10.4	0	8	8	-	0.0	3.6	3.6
- Theft of Motor Vehicle	62	60	-2	-3.2	12	9	-3	-25.0	19.4	15.0	-4.4
- Vehicle Interference	39	31	-8	-20.5	0	0	0	-	0.0	0.0	0.0
- Theft	583	503	-80	-13.7	111	73	-38	-34.2	19.0	14.5	-4.5
- Theft from the Person	12	27	15	125.0	1	1	0	0.0	8.3	3.7	-4.6
- Theft of Pedal Cycle	24	18	-6	-25.0	0	1	1	-	0.0	5.6	5.6
- Shoplifting	120	95	-25	-20.8	58	33	-25	-43.1	48.3	34.7	-13.6
- Other Theft	427	363	-64	-15.0	52	38	-14	-26.9	12.2	10.5	-1.7
Criminal Damage inc. Arson	410	375	-35	-8.5	60	38	-22	-36.7	14.6	10.1	-4.5
- Criminal Damage	398	358	-40	-10.1	58	37	-21	-36.2	14.6	10.3	-4.2
- Arson	12	17	5	41.7	2	1	-1	-50.0	16.7	5.9	-10.8
Racial/Religiously Aggravated Offences	10	10	0	0.0	3	2	-1	-33.3	30.0	20.0	-10.0
State Based Crime	Offences				Outcomes				Solved Rates %		
Crime Type	2015	2016	# diff.	% diff.	2015	2016	# diff.	% diff.	2015	2016	% pt. diff.
Drug Offences	61	42	-19	-31.1	59	41	-18	-30.5	96.7	97.6	0.9
- Trafficking of Drugs	11	8	-3	-27.3	7	7	0	0.0	63.6	87.5	23.9
- Possession of Drugs	50	34	-16	-32.0	52	34	-18	-34.6	104.0	100.0	-4.0
Possession of Weapons	14	9	-5	-35.7	8	8	0	0.0	57.1	88.9	31.7
Public Order	59	92	33	55.9	34	21	-13	-38.2	57.6	22.8	-34.8
Miscellaneous Crimes against Society	40	25	-15	-37.5	16	9	-7	-43.8	40.0	36.0	-4.0

Corporate Services: Performance Summary

Essex Police Performance Summary

Maldon

Cumulative Year to March

Top Level	Offences				Outcomes				Solved Rates %		
Crime Type	2015	2016	# diff.	% diff.	2015	2016	# diff.	% diff.	2015	2016	% pt. diff.
Anti-Social Behaviour (incidents)	1141	1096	-45	-3.9	-	-	-	-	-	-	-
All Crime (excl. Action (NFIB) Fraud)	2306	2341	35	1.5	512	389	-123	-24.0	22.2	16.6	-5.6
- State Based Crime	182	199	17	9.3	123	105	-18	-14.6	67.6	52.8	-14.8
- Victim Based Crime	2124	2142	18	0.8	389	284	-105	-27.0	18.3	13.3	-5.1
Victim Based Crime	Offences				Outcomes				Solved Rates %		
Crime Type	2015	2016	# diff.	% diff.	2015	2016	# diff.	% diff.	2015	2016	% pt. diff.
Violence Against the Person	542	697	155	28.6	199	183	-16	-8.0	36.7	26.3	-10.5
- Homicide	0	2	2	-	0	2	2	-	-	100.0	-
- Violence with Injury	239	293	54	22.6	97	97	0	0.0	40.6	33.1	-7.5
- Violence without Injury	303	402	99	32.7	102	84	-18	-17.6	33.7	20.9	-12.8
Sexual Offences	54	75	21	38.9	15	9	-6	-40.0	27.8	12.0	-15.8
- Rape	24	36	12	50.0	5	0	-5	-100.0	20.8	0.0	-20.8
- Rape - Under 16 yrs	11	23	12	109.1	2	0	-2	-100.0	18.2	0.0	-18.2
- Rape - Over 16 yrs	13	13	0	0.0	3	0	-3	-100.0	23.1	0.0	-23.1
- Other Sexual Offences	30	39	9	30.0	10	9	-1	-10.0	33.3	23.1	-10.3
Robbery	14	11	-3	-21.4	9	3	-6	-66.7	64.3	27.3	-37.0
- Robbery of business property	1	2	1	100.0	0	0	0	-	0.0	0.0	0.0
- Robbery of Personal Property	13	9	-4	-30.8	9	3	-6	-66.7	69.2	33.3	-35.9
Theft Offences	1196	1033	-163	-13.6	120	57	-63	-52.5	10.0	5.5	-4.5
- Burglary	317	335	18	5.7	22	4	-18	-81.8	6.9	1.2	-5.7
- Dwelling Burglary	66	112	46	69.7	18	3	-15	-83.3	27.3	2.7	-24.6
- Other Burglary	251	223	-28	-11.2	4	1	-3	-75.0	1.6	0.4	-1.1
- Vehicle Offences (incl. Interference)	369	268	-101	-27.4	16	10	-6	-37.5	4.3	3.7	-0.6
- Theft from Vehicle	239	183	-56	-23.4	10	5	-5	-50.0	4.2	2.7	-1.5
- Theft of Motor Vehicle	92	56	-36	-39.1	6	5	-1	-16.7	6.5	8.9	2.4
- Vehicle Interference	38	29	-9	-23.7	0	0	0	-	0.0	0.0	0.0
- Theft	510	430	-80	-15.7	82	43	-39	-47.6	16.1	10.0	-6.1
- Theft from the Person	34	39	5	14.7	1	1	0	0.0	2.9	2.6	-0.4
- Theft of Pedal Cycle	31	15	-16	-51.6	0	0	0	-	0.0	0.0	0.0
- Shoplifting	111	68	-43	-38.7	56	19	-37	-66.1	50.5	27.9	-22.5
- Other Theft	334	308	-26	-7.8	25	23	-2	-8.0	7.5	7.5	0.0
Criminal Damage inc. Arson	318	326	8	2.5	46	32	-14	-30.4	14.5	9.8	-4.6
- Criminal Damage	309	317	8	2.6	42	29	-13	-31.0	13.6	9.1	-4.4
- Arson	9	9	0	0.0	4	3	-1	-25.0	44.4	33.3	-11.1
Racial/Religiously Aggravated Offences	10	8	-2	-20.0	4	2	-2	-50.0	40.0	25.0	-15.0
State Based Crime	Offences				Outcomes				Solved Rates %		
Crime Type	2015	2016	# diff.	% diff.	2015	2016	# diff.	% diff.	2015	2016	% pt. diff.
Drug Offences	67	52	-15	-22.4	61	48	-13	-21.3	91.0	92.3	1.3
- Trafficking of Drugs	18	10	-8	-44.4	13	8	-5	-38.5	72.2	80.0	7.8
- Possession of Drugs	49	42	-7	-14.3	48	40	-8	-16.7	98.0	95.2	-2.7
Possession of Weapons	10	11	1	10.0	10	8	-2	-20.0	100.0	72.7	-27.3
Public Order	79	117	38	48.1	42	35	-7	-16.7	53.2	29.9	-23.3
Miscellaneous Crimes against Society	26	19	-7	-26.9	10	14	4	40.0	38.5	73.7	35.2

Corporate Services: Performance Summary
Essex Police Performance Summary

Colchester
Cumulative Year to March

Top Level	Offences				Outcomes				Solved Rates %		
Crime Type	2015	2016	# diff.	% diff.	2015	2016	# diff.	% diff.	2015	2016	% pt. diff.
Anti-Social Behaviour (incidents)	6001	5589	-412	-6.9	-	-	-	-	-	-	-
All Crime (excl. Action (NFIB) Fraud)	10945	11995	1050	9.6	3030	2827	-203	-6.7	27.7	23.6	-4.1
- State Based Crime	949	1243	294	31.0	655	652	-3	-0.5	69.0	52.5	-16.6
- Victim Based Crime	9996	10752	756	7.6	2375	2175	-200	-8.4	23.8	20.2	-3.5
Victim Based Crime	Offences				Outcomes				Solved Rates %		
Crime Type	2015	2016	# diff.	% diff.	2015	2016	# diff.	% diff.	2015	2016	% pt. diff.
Violence Against the Person	2810	3613	803	28.6	993	932	-61	-6.1	35.3	25.8	-9.5
- Homicide	2	0	-2	-100.0	1	2	1	100.0	50.0	-	-
- Violence with Injury	1291	1412	121	9.4	514	420	-94	-18.3	39.8	29.7	-10.1
- Violence without Injury	1517	2201	684	45.1	478	510	32	6.7	31.5	23.2	-8.3
Sexual Offences	310	360	50	16.1	42	61	19	45.2	13.5	16.9	3.4
- Rape	114	135	21	18.4	8	14	6	75.0	7.0	10.4	3.4
- Rape - Under 16 yrs	33	38	5	15.2	2	5	3	150.0	6.1	13.2	7.1
- Rape - Over 16 yrs	81	97	16	19.8	6	9	3	50.0	7.4	9.3	1.9
- Other Sexual Offences	196	225	29	14.8	34	47	13	38.2	17.3	20.9	3.5
Robbery	77	90	13	16.9	26	24	-2	-7.7	33.8	26.7	-7.1
- Robbery of business property	4	4	0	0.0	2	4	2	100.0	50.0	100.0	50.0
- Robbery of Personal Property	73	86	13	17.8	24	20	-4	-16.7	32.9	23.3	-9.6
Theft Offences	5140	5038	-102	-2.0	1034	905	-129	-12.5	20.1	18.0	-2.2
- Burglary	1326	1145	-181	-13.7	119	102	-17	-14.3	9.0	8.9	-0.1
- Dwelling Burglary	635	572	-63	-9.9	74	85	11	14.9	11.7	14.9	3.2
- Other Burglary	691	573	-118	-17.1	45	17	-28	-62.2	6.5	3.0	-3.5
- Vehicle Offences (incl. Interference)	817	765	-52	-6.4	58	25	-33	-56.9	7.1	3.3	-3.8
- Theft from Vehicle	494	487	-7	-1.4	19	4	-15	-78.9	3.8	0.8	-3.0
- Theft of Motor Vehicle	224	201	-23	-10.3	36	19	-17	-47.2	16.1	9.5	-6.6
- Vehicle Interference	99	77	-22	-22.2	3	2	-1	-33.3	3.0	2.6	-0.4
- Theft	2997	3128	131	4.4	857	778	-79	-9.2	28.6	24.9	-3.7
- Theft from the Person	134	202	68	50.7	2	11	9	450.0	1.5	5.4	4.0
- Theft of Pedal Cycle	369	354	-15	-4.1	15	28	13	86.7	4.1	7.9	3.8
- Shoplifting	1124	1252	128	11.4	691	617	-74	-10.7	61.5	49.3	-12.2
- Other Theft	1370	1320	-50	-3.6	149	122	-27	-18.1	10.9	9.2	-1.6
Criminal Damage inc. Arson	1659	1651	-8	-0.5	280	253	-27	-9.6	16.9	15.3	-1.6
- Criminal Damage	1622	1611	-11	-0.7	275	249	-26	-9.5	17.0	15.5	-1.5
- Arson	37	40	3	8.1	5	4	-1	-20.0	13.5	10.0	-3.5
Racial/Religiously Aggravated Offences	100	88	-12	-12.0	43	29	-14	-32.6	43.0	33.0	-10.0
State Based Crime	Offences				Outcomes				Solved Rates %		
Crime Type	2015	2016	# diff.	% diff.	2015	2016	# diff.	% diff.	2015	2016	% pt. diff.
Drug Offences	362	318	-44	-12.2	351	293	-58	-16.5	97.0	92.1	-4.8
- Trafficking of Drugs	44	104	60	136.4	38	84	46	121.1	86.4	80.8	-5.6
- Possession of Drugs	318	214	-104	-32.7	313	209	-104	-33.2	98.4	97.7	-0.8
Possession of Weapons	48	65	17	35.4	33	41	8	24.2	68.8	63.1	-5.7
Public Order	423	677	254	60.0	202	236	34	16.8	47.8	34.9	-12.9
Miscellaneous Crimes against Society	116	183	67	57.8	69	82	13	18.8	59.5	44.8	-14.7

Corporate Services: Performance Summary

Essex Police Performance Summary

Trending

Cumulative Year to March

Top Level	Offences				Outcomes				Solved Rates %		
Crime Type	2015	2016	# diff.	% diff.	2015	2016	# diff.	% diff.	2015	2016	% pt. diff.
Anti-Social Behaviour (incidents)	4881	4651	-230	-4.7	-	-	-	-	-	-	-
All Crime (excl. Action (NFIB) Fraud)	9207	9919	712	7.7	2698	2444	-254	-9.4	29.3	24.6	-4.7
- State Based Crime	838	957	119	14.2	551	470	-81	-14.7	65.8	49.1	-16.6
- Victim Based Crime	8369	8962	593	7.1	2147	1974	-173	-8.1	25.7	22.0	-3.6
Victim Based Crime	Offences				Outcomes				Solved Rates %		
Crime Type	2015	2016	# diff.	% diff.	2015	2016	# diff.	% diff.	2015	2016	% pt. diff.
Violence Against the Person	2555	3121	566	22.2	937	911	-26	-2.8	36.7	29.2	-7.5
- Homicide	1	4	3	300.0	0	3	3	-	0.0	75.0	75.0
- Violence with Injury	1118	1256	138	12.3	416	387	-29	-7.0	37.2	30.8	-6.4
- Violence without Injury	1436	1861	425	29.6	521	521	0	0.0	36.3	28.0	-8.3
Sexual Offences	254	282	28	11.0	41	39	-2	-4.9	16.1	13.8	-2.3
- Rape	83	90	7	8.4	10	10	0	0.0	12.0	11.1	-0.9
- Rape - Under 16 yrs	23	29	6	26.1	6	4	-2	-33.3	26.1	13.8	-12.3
- Rape - Over 16 yrs	60	61	1	1.7	4	6	2	50.0	6.7	9.8	3.2
- Other Sexual Offences	171	192	21	12.3	31	29	-2	-6.5	18.1	15.1	-3.0
Robbery	90	72	-18	-20.0	15	14	-1	-6.7	16.7	19.4	2.8
- Robbery of business property	4	7	3	75.0	0	2	2	-	0.0	28.6	28.6
- Robbery of Personal Property	86	65	-21	-24.4	15	12	-3	-20.0	17.4	18.5	1.0
Theft Offences	4113	4154	41	1.0	927	780	-147	-15.9	22.5	18.8	-3.8
- Burglary	1115	1189	74	6.6	140	125	-15	-10.7	12.6	10.5	-2.0
- Dwelling Burglary	443	507	64	14.4	71	84	13	18.3	16.0	16.6	0.5
- Other Burglary	672	682	10	1.5	69	41	-28	-40.6	10.3	6.0	-4.3
- Vehicle Offences (incl. Interference)	666	746	80	12.0	49	38	-11	-22.4	7.4	5.1	-2.3
- Theft from Vehicle	443	517	74	16.7	13	7	-6	-46.2	2.9	1.4	-1.6
- Theft of Motor Vehicle	166	160	-6	-3.6	35	26	-9	-25.7	21.1	16.3	-4.8
- Vehicle Interference	57	69	12	21.1	1	5	4	400.0	1.8	7.2	5.5
- Theft	2332	2219	-113	-4.8	738	617	-121	-16.4	31.6	27.8	-3.8
- Theft from the Person	75	125	50	66.7	4	5	1	25.0	5.3	4.0	-1.3
- Theft of Pedal Cycle	166	132	-34	-20.5	6	10	4	66.7	3.6	7.6	4.0
- Shoplifting	1030	1007	-23	-2.2	610	503	-107	-17.5	59.2	50.0	-9.3
- Other Theft	1061	955	-106	-10.0	118	99	-19	-16.1	11.1	10.4	-0.8
Criminal Damage inc. Arson	1357	1333	-24	-1.8	227	230	3	1.3	16.7	17.3	0.5
- Criminal Damage	1289	1289	0	0.0	222	228	6	2.7	17.2	17.7	0.5
- Arson	68	44	-24	-35.3	5	2	-3	-60.0	7.4	4.5	-2.8
Racial/Religiously Aggravated Offences	61	34	-27	-44.3	24	12	-12	-50.0	39.3	35.3	-4.1
State Based Crime	Offences				Outcomes				Solved Rates %		
Crime Type	2015	2016	# diff.	% diff.	2015	2016	# diff.	% diff.	2015	2016	% pt. diff.
Drug Offences	297	218	-79	-26.6	283	206	-77	-27.2	95.3	94.5	-0.8
- Trafficking of Drugs	52	51	-1	-1.9	45	46	1	2.2	86.5	90.2	3.7
- Possession of Drugs	245	167	-78	-31.8	238	160	-78	-32.8	97.1	95.8	-1.3
Possession of Weapons	60	69	9	15.0	46	49	3	6.5	76.7	71.0	-5.7
Public Order	372	494	122	32.8	173	159	-14	-8.1	46.5	32.2	-14.3
Miscellaneous Crimes against Society	109	176	67	61.5	49	56	7	14.3	45.0	31.8	-13.1

Corporate Services: Performance Summary

Essex Police Performance Summary

Southend

Cumulative Year to March

Top Level	Offences				Outcomes				Solved Rates %		
Crime Type	2015	2016	# diff.	% diff.	2015	2016	# diff.	% diff.	2015	2016	% pt. diff.
Anti-Social Behaviour (incidents)	7950	7354	-596	-7.5	-	-	-	-	-	-	-
All Crime (excl. Action (NFIB) Fraud)	12893	14271	1378	10.7	3765	3110	-655	-17.4	29.2	21.8	-7.4
- State Based Crime	1539	1503	-36	-2.3	1145	730	-415	-36.2	74.4	48.6	-25.8
- Victim Based Crime	11354	12768	1414	12.5	2620	2380	-240	-9.2	23.1	18.6	-4.4
Victim Based Crime	Offences				Outcomes				Solved Rates %		
Crime Type	2015	2016	# diff.	% diff.	2015	2016	# diff.	% diff.	2015	2016	% pt. diff.
Violence Against the Person	3140	4068	928	29.6	1159	1077	-82	-7.1	36.9	26.5	-10.4
- Homicide	2	4	2	100.0	2	4	2	100.0	100.0	100.0	0.0
- Violence with Injury	1423	1616	193	13.6	550	499	-51	-9.3	38.7	30.9	-7.8
- Violence without Injury	1715	2448	733	42.7	607	574	-33	-5.4	35.4	23.4	-11.9
Sexual Offences	341	337	-4	-1.2	53	56	3	5.7	15.5	16.6	1.1
- Rape	133	136	3	2.3	23	14	-9	-39.1	17.3	10.3	-7.0
- Rape - Under 16 yrs	36	39	3	8.3	10	7	-3	-30.0	27.8	17.9	-9.8
- Rape - Over 16 yrs	97	97	0	0.0	13	7	-6	-46.2	13.4	7.2	-6.2
- Other Sexual Offences	208	201	-7	-3.4	30	42	12	40.0	14.4	20.9	6.5
Robbery	158	181	23	14.6	29	26	-3	-10.3	18.4	14.4	-4.0
- Robbery of business property	12	13	1	8.3	5	7	2	40.0	41.7	53.8	12.2
- Robbery of Personal Property	146	168	22	15.1	24	19	-5	-20.8	16.4	11.3	-5.1
Theft Offences	5992	6185	193	3.2	1092	908	-184	-16.8	18.2	14.7	-3.5
- Burglary	1330	1355	25	1.9	126	108	-18	-14.3	9.5	8.0	-1.5
- Dwelling Burglary	779	842	63	8.1	91	71	-20	-22.0	11.7	8.4	-3.2
- Other Burglary	551	513	-38	-6.9	35	37	2	5.7	6.4	7.2	0.9
- Vehicle Offences (incl. Interference)	1576	1560	-16	-1.0	79	82	3	3.8	5.0	5.3	0.2
- Theft from Vehicle	1035	1056	21	2.0	25	35	10	40.0	2.4	3.3	0.9
- Theft of Motor Vehicle	370	334	-36	-9.7	47	43	-4	-8.5	12.7	12.9	0.2
- Vehicle Interference	171	170	-1	-0.6	7	4	-3	-42.9	4.1	2.4	-1.7
- Theft	3086	3270	184	6.0	887	718	-169	-19.1	28.7	22.0	-6.8
- Theft from the Person	220	240	20	9.1	4	9	5	125.0	1.8	3.8	1.9
- Theft of Pedal Cycle	340	368	28	8.2	14	9	-5	-35.7	4.1	2.4	-1.7
- Shoplifting	1098	1197	99	9.0	710	538	-172	-24.2	64.7	44.9	-19.7
- Other Theft	1428	1465	37	2.6	159	162	3	1.9	11.1	11.1	-0.1
Criminal Damage inc. Arson	1723	1997	274	15.9	287	313	26	9.1	16.7	15.7	-1.0
- Criminal Damage	1658	1946	288	17.4	278	308	30	10.8	16.8	15.8	-0.9
- Arson	65	51	-14	-21.5	9	5	-4	-44.4	13.8	9.8	-4.0
Racial/Religiously Aggravated Offences	130	129	-1	-0.8	51	30	-21	-41.2	39.2	23.3	-16.0
State Based Crime	Offences				Outcomes				Solved Rates %		
Crime Type	2015	2016	# diff.	% diff.	2015	2016	# diff.	% diff.	2015	2016	% pt. diff.
Drug Offences	647	328	-319	-49.3	635	293	-342	-53.9	98.1	89.3	-8.8
- Trafficking of Drugs	218	82	-136	-62.4	205	65	-140	-68.3	94.0	79.3	-14.8
- Possession of Drugs	429	246	-183	-42.7	430	228	-202	-47.0	100.2	92.7	-7.6
Possession of Weapons	87	124	37	42.5	74	79	5	6.8	85.1	63.7	-21.3
Public Order	614	864	250	40.7	323	283	-40	-12.4	52.6	32.8	-19.9
Miscellaneous Crimes against Society	191	187	-4	-2.1	113	75	-38	-33.6	59.2	40.1	-19.1

Corporate Services: Performance Summary
Essex Police Performance Summary

Castle Point
Cumulative Year to March

Top Level	Offences				Outcomes				Solved Rates %		
Crime Type	2015	2016	# diff.	% diff.	2015	2016	# diff.	% diff.	2015	2016	% pt. diff.
Anti-Social Behaviour (incidents)	2308	1961	-347	-15.0	-	-	-	-	-	-	-
All Crime (excl. Action (NFIB) Fraud)	3327	3989	662	19.9	859	779	-80	-9.3	25.8	19.5	-6.3
- State Based Crime	323	433	110	34.1	202	193	-9	-4.5	62.5	44.6	-18.0
- Victim Based Crime	3004	3556	552	18.4	657	586	-71	-10.8	21.9	16.5	-5.4
Victim Based Crime	Offences				Outcomes				Solved Rates %		
Crime Type	2015	2016	# diff.	% diff.	2015	2016	# diff.	% diff.	2015	2016	% pt. diff.
Violence Against the Person	815	1108	293	36.0	278	267	-11	-4.0	34.1	24.1	-10.0
- Homicide	0	1	1	-	0	0	0	-	-	0.0	-
- Violence with Injury	400	438	38	9.5	138	118	-20	-14.5	34.5	26.9	-7.6
- Violence without Injury	415	669	254	61.2	140	149	9	6.4	33.7	22.3	-11.5
Sexual Offences	103	99	-4	-3.9	21	26	5	23.8	20.4	26.3	5.9
- Rape	27	36	9	33.3	7	4	-3	-42.9	25.9	11.1	-14.8
- Rape - Under 16 yrs	6	17	11	183.3	4	2	-2	-50.0	66.7	11.8	-54.9
- Rape - Over 16 yrs	21	19	-2	-9.5	3	2	-1	-33.3	14.3	10.5	-3.8
- Other Sexual Offences	76	63	-13	-17.1	14	22	8	57.1	18.4	34.9	16.5
Robbery	34	45	11	32.4	4	11	7	175.0	11.8	24.4	12.7
- Robbery of business property	9	18	9	100.0	1	5	4	400.0	11.1	27.8	16.7
- Robbery of Personal Property	25	27	2	8.0	3	6	3	100.0	12.0	22.2	10.2
Theft Offences	1559	1759	200	12.8	295	199	-96	-32.5	18.9	11.3	-7.6
- Burglary	526	665	139	26.4	53	37	-16	-30.2	10.1	5.6	-4.5
- Dwelling Burglary	331	317	-14	-4.2	46	20	-26	-56.5	13.9	6.3	-7.6
- Other Burglary	195	348	153	78.5	7	17	10	142.9	3.6	4.9	1.3
- Vehicle Offences (incl. Interference)	346	385	39	11.3	57	31	-26	-45.6	16.5	8.1	-8.4
- Theft from Vehicle	204	213	9	4.4	44	10	-34	-77.3	21.6	4.7	-16.9
- Theft of Motor Vehicle	106	134	28	26.4	12	20	8	66.7	11.3	14.9	3.6
- Vehicle Interference	36	38	2	5.6	1	1	0	0.0	2.8	2.6	-0.1
- Theft	687	709	22	3.2	185	131	-54	-29.2	26.9	18.5	-8.5
- Theft from the Person	25	40	15	60.0	1	2	1	100.0	4.0	5.0	1.0
- Theft of Pedal Cycle	86	56	-30	-34.9	11	2	-9	-81.8	12.8	3.6	-9.2
- Shoplifting	162	191	29	17.9	91	75	-16	-17.6	56.2	39.3	-16.9
- Other Theft	414	422	8	1.9	82	52	-30	-36.6	19.8	12.3	-7.5
Criminal Damage inc. Arson	493	545	52	10.5	59	83	24	40.7	12.0	15.2	3.3
- Criminal Damage	472	523	51	10.8	56	82	26	46.4	11.9	15.7	3.8
- Arson	21	22	1	4.8	3	1	-2	-66.7	14.3	4.5	-9.7
Racial/Religiously Aggravated Offences	17	31	14	82.4	4	6	2	50.0	23.5	19.4	-4.2
State Based Crime	Offences				Outcomes				Solved Rates %		
Crime Type	2015	2016	# diff.	% diff.	2015	2016	# diff.	% diff.	2015	2016	% pt. diff.
Drug Offences	119	106	-13	-10.9	114	92	-22	-19.3	95.8	86.8	-9.0
- Trafficking of Drugs	14	15	1	7.1	12	7	-5	-41.7	85.7	46.7	-39.0
- Possession of Drugs	105	91	-14	-13.3	102	85	-17	-16.7	97.1	93.4	-3.7
Possession of Weapons	23	26	3	13.0	17	14	-3	-17.6	73.9	53.8	-20.1
Public Order	139	240	101	72.7	55	70	15	27.3	39.6	29.2	-10.4
Miscellaneous Crimes against Society	42	61	19	45.2	16	17	1	6.3	38.1	27.9	-10.2

Corporate Services: Performance Summary
Essex Police Performance Summary

Rochford
Cumulative Year to March

Top Level	Offences				Outcomes				Solved Rates %		
Crime Type	2015	2016	# diff.	% diff.	2015	2016	# diff.	% diff.	2015	2016	% pt. diff.
Anti-Social Behaviour (incidents)	1720	1627	-93	-5.4	-	-	-	-	-	-	-
All Crime (excl. Action (NFIB) Fraud)	2694	3176	482	17.9	701	606	-95	-13.6	26.0	19.1	-6.9
- State Based Crime	220	268	48	21.8	150	114	-36	-24.0	68.2	42.5	-25.6
- Victim Based Crime	2474	2908	434	17.5	551	492	-59	-10.7	22.3	16.9	-5.4
Victim Based Crime	Offences				Outcomes				Solved Rates %		
Crime Type	2015	2016	# diff.	% diff.	2015	2016	# diff.	% diff.	2015	2016	% pt. diff.
Violence Against the Person	613	856	243	39.6	224	193	-31	-13.8	36.5	22.5	-14.0
- Homicide	1	0	-1	-100.0	0	1	1	-	0.0	-	-
- Violence with Injury	295	324	29	9.8	120	90	-30	-25.0	40.7	27.8	-12.9
- Violence without Injury	317	532	215	67.8	104	102	-2	-1.9	32.8	19.2	-13.6
Sexual Offences	68	82	14	20.6	17	16	-1	-5.9	25.0	19.5	-5.5
- Rape	28	32	4	14.3	3	4	1	33.3	10.7	12.5	1.8
- Rape - Under 16 yrs	11	14	3	27.3	0	1	1	-	0.0	7.1	7.1
- Rape - Over 16 yrs	17	18	1	5.9	3	3	0	0.0	17.6	16.7	-1.0
- Other Sexual Offences	40	50	10	25.0	14	12	-2	-14.3	35.0	24.0	-11.0
Robbery	16	21	5	31.3	3	5	2	66.7	18.8	23.8	5.1
- Robbery of business property	4	2	-2	-50.0	2	0	-2	-100.0	50.0	0.0	-50.0
- Robbery of Personal Property	12	19	7	58.3	1	5	4	400.0	8.3	26.3	18.0
Theft Offences	1342	1450	108	8.0	247	229	-18	-7.3	18.4	15.8	-2.6
- Burglary	379	444	65	17.2	23	18	-5	-21.7	6.1	4.1	-2.0
- Dwelling Burglary	232	262	30	12.9	16	10	-6	-37.5	6.9	3.8	-3.1
- Other Burglary	147	182	35	23.8	7	8	1	14.3	4.8	4.4	-0.4
- Vehicle Offences (incl. Interference)	292	307	15	5.1	12	9	-3	-25.0	4.1	2.9	-1.2
- Theft from Vehicle	182	181	-1	-0.5	4	1	-3	-75.0	2.2	0.6	-1.6
- Theft of Motor Vehicle	89	102	13	14.6	7	8	1	14.3	7.9	7.8	0.0
- Vehicle Interference	21	24	3	14.3	1	0	-1	-100.0	4.8	0.0	-4.8
- Theft	671	699	28	4.2	212	202	-10	-4.7	31.6	28.9	-2.7
- Theft from the Person	41	39	-2	-4.9	1	1	0	0.0	2.4	2.6	0.1
- Theft of Pedal Cycle	32	57	25	78.1	1	4	3	300.0	3.1	7.0	3.9
- Shoplifting	260	309	49	18.8	175	172	-3	-1.7	67.3	55.7	-11.6
- Other Theft	338	294	-44	-13.0	35	25	-10	-28.6	10.4	8.5	-1.9
Criminal Damage inc. Arson	435	499	64	14.7	60	49	-11	-18.3	13.8	9.8	-4.0
- Criminal Damage	420	485	65	15.5	59	48	-11	-18.6	14.0	9.9	-4.2
- Arson	15	14	-1	-6.7	1	1	0	0.0	6.7	7.1	0.5
Racial/Religiously Aggravated Offences	14	14	0	0.0	8	6	-2	-25.0	57.1	42.9	-14.3
State Based Crime	Offences				Outcomes				Solved Rates %		
Crime Type	2015	2016	# diff.	% diff.	2015	2016	# diff.	% diff.	2015	2016	% pt. diff.
Drug Offences	91	54	-37	-40.7	86	52	-34	-39.5	94.5	96.3	1.8
- Trafficking of Drugs	24	10	-14	-58.3	23	7	-16	-69.6	95.8	70.0	-25.8
- Possession of Drugs	67	44	-23	-34.3	63	45	-18	-28.6	94.0	102.3	8.2
Possession of Weapons	19	26	7	36.8	16	19	3	18.8	84.2	73.1	-11.1
Public Order	75	142	67	89.3	33	34	1	3.0	44.0	23.9	-20.1
Miscellaneous Crimes against Society	35	46	11	31.4	15	9	-6	-40.0	42.9	19.6	-23.3

Corporate Services: Performance Summary
Essex Police Performance Summary

Basildon
Cumulative Year to March

Top Level	Offences				Outcomes				Solved Rates %		
Crime Type	2015	2016	# diff.	% diff.	2015	2016	# diff.	% diff.	2015	2016	% pt. diff.
Anti-Social Behaviour (incidents)	6487	6091	-396	-6.1	-	-	-	-	-	-	-
All Crime (excl. Action (NFIB) Fraud)	12158	14314	2156	17.7	3218	2706	-512	-15.9	26.5	18.9	-7.6
- State Based Crime	1186	1358	172	14.5	846	634	-212	-25.1	71.3	46.7	-24.6
- Victim Based Crime	10972	12956	1984	18.1	2372	2072	-300	-12.6	21.6	16.0	-5.6
Victim Based Crime	Offences				Outcomes				Solved Rates %		
Crime Type	2015	2016	# diff.	% diff.	2015	2016	# diff.	% diff.	2015	2016	% pt. diff.
Violence Against the Person	2570	3501	931	36.2	838	836	-2	-0.2	32.6	23.9	-8.7
- Homicide	0	7	7	-	0	3	3	-	-	42.9	-
- Violence with Injury	1204	1368	164	13.6	417	352	-65	-15.6	34.6	25.7	-8.9
- Violence without Injury	1366	2126	760	55.6	421	481	60	14.3	30.8	22.6	-8.2
Sexual Offences	291	336	45	15.5	59	46	-13	-22.0	20.3	13.7	-6.6
- Rape	96	116	20	20.8	18	12	-6	-33.3	18.8	10.3	-8.4
- Rape - Under 16 yrs	32	35	3	9.4	7	9	2	28.6	21.9	25.7	3.8
- Rape - Over 16 yrs	64	81	17	26.6	11	3	-8	-72.7	17.2	3.7	-13.5
- Other Sexual Offences	195	220	25	12.8	41	34	-7	-17.1	21.0	15.5	-5.6
Robbery	142	192	50	35.2	23	34	11	47.8	16.2	17.7	1.5
- Robbery of business property	17	13	-4	-23.5	5	8	3	60.0	29.4	61.5	32.1
- Robbery of Personal Property	125	179	54	43.2	18	26	8	44.4	14.4	14.5	0.1
Theft Offences	6323	6740	417	6.6	1217	947	-270	-22.2	19.2	14.1	-5.2
- Burglary	1821	1887	66	3.6	248	121	-127	-51.2	13.6	6.4	-7.2
- Dwelling Burglary	1073	1146	73	6.8	212	87	-125	-59.0	19.8	7.6	-12.2
- Other Burglary	748	741	-7	-0.9	36	34	-2	-5.6	4.8	4.6	-0.2
- Vehicle Offences (incl. Interference)	1784	2147	363	20.3	91	70	-21	-23.1	5.1	3.3	-1.8
- Theft from Vehicle	1210	1364	154	12.7	46	25	-21	-45.7	3.8	1.8	-2.0
- Theft of Motor Vehicle	359	505	146	40.7	40	38	-2	-5.0	11.1	7.5	-3.6
- Vehicle Interference	215	278	63	29.3	5	7	2	40.0	2.3	2.5	0.2
- Theft	2718	2706	-12	-0.4	878	756	-122	-13.9	32.3	27.9	-4.4
- Theft from the Person	176	198	22	12.5	6	6	0	0.0	3.4	3.0	-0.4
- Theft of Pedal Cycle	226	182	-44	-19.5	10	4	-6	-60.0	4.4	2.2	-2.2
- Shoplifting	1006	1113	107	10.6	688	629	-59	-8.6	68.4	56.5	-11.9
- Other Theft	1310	1213	-97	-7.4	174	117	-57	-32.8	13.3	9.6	-3.6
Criminal Damage inc. Arson	1646	2187	541	32.9	235	209	-26	-11.1	14.3	9.6	-4.7
- Criminal Damage	1606	2126	520	32.4	226	208	-18	-8.0	14.1	9.8	-4.3
- Arson	40	61	21	52.5	9	1	-8	-88.9	22.5	1.6	-20.9
Racial/Religiously Aggravated Offences	105	94	-11	-10.5	35	25	-10	-28.6	33.3	26.6	-6.7
State Based Crime	Offences				Outcomes				Solved Rates %		
Crime Type	2015	2016	# diff.	% diff.	2015	2016	# diff.	% diff.	2015	2016	% pt. diff.
Drug Offences	559	346	-213	-38.1	533	317	-216	-40.5	95.3	91.6	-3.7
- Trafficking of Drugs	99	85	-14	-14.1	90	66	-24	-26.7	90.9	77.6	-13.3
- Possession of Drugs	460	261	-199	-43.3	443	251	-192	-43.3	96.3	96.2	-0.1
Possession of Weapons	70	95	25	35.7	49	53	4	8.2	70.0	55.8	-14.2
Public Order	423	704	281	66.4	191	196	5	2.6	45.2	27.8	-17.3
Miscellaneous Crimes against Society	134	213	79	59.0	73	68	-5	-6.8	54.5	31.9	-22.6

Corporate Services: Performance Summary
Essex Police Performance Summary

Thurrock
Cumulative Year to March

Top Level	Offences				Outcomes				Solved Rates %		
Crime Type	2015	2016	# diff.	% diff.	2015	2016	# diff.	% diff.	2015	2016	% pt. diff.
Anti-Social Behaviour (incidents)	5883	5607	-276	-4.7	-	-	-	-	-	-	-
All Crime (excl. Action (NFIB) Fraud)	10956	12443	1487	13.6	2618	2498	-120	-4.6	23.9	20.1	-3.8
- State Based Crime	881	1150	269	30.5	538	539	1	0.2	61.1	46.9	-14.2
- Victim Based Crime	10075	11293	1218	12.1	2080	1959	-121	-5.8	20.6	17.3	-3.3
Victim Based Crime	Offences				Outcomes				Solved Rates %		
Crime Type	2015	2016	# diff.	% diff.	2015	2016	# diff.	% diff.	2015	2016	% pt. diff.
Violence Against the Person	2370	3035	665	28.1	764	816	52	6.8	32.2	26.9	-5.3
- Homicide	0	1	1	-	0	0	0	-	-	0.0	-
- Violence with Injury	1025	1190	165	16.1	371	377	6	1.6	36.2	31.7	-4.5
- Violence without Injury	1345	1844	499	37.1	393	439	46	11.7	29.2	23.8	-5.4
Sexual Offences	249	248	-1	-0.4	43	35	-8	-18.6	17.3	14.1	-3.2
- Rape	98	97	-1	-1.0	14	11	-3	-21.4	14.3	11.3	-2.9
- Rape - Under 16 yrs	40	27	-13	-32.5	9	10	1	11.1	22.5	37.0	14.5
- Rape - Over 16 yrs	58	70	12	20.7	5	1	-4	-80.0	8.6	1.4	-7.2
- Other Sexual Offences	151	151	0	0.0	29	24	-5	-17.2	19.2	15.9	-3.3
Robbery	111	116	5	4.5	25	28	3	12.0	22.5	24.1	1.6
- Robbery of business property	24	16	-8	-33.3	5	8	3	60.0	20.8	50.0	29.2
- Robbery of Personal Property	87	100	13	14.9	20	20	0	0.0	23.0	20.0	-3.0
Theft Offences	5923	6185	262	4.4	1036	870	-166	-16.0	17.5	14.1	-3.4
- Burglary	1414	1415	1	0.1	151	87	-64	-42.4	10.7	6.1	-4.5
- Dwelling Burglary	809	699	-110	-13.6	109	63	-46	-42.2	13.5	9.0	-4.5
- Other Burglary	605	716	111	18.3	42	24	-18	-42.9	6.9	3.4	-3.6
- Vehicle Offences (incl. Interference)	1681	1687	6	0.4	114	51	-63	-55.3	6.8	3.0	-3.8
- Theft from Vehicle	1018	1023	5	0.5	38	16	-22	-57.9	3.7	1.6	-2.2
- Theft of Motor Vehicle	497	544	47	9.5	67	33	-34	-50.7	13.5	6.1	-7.4
- Vehicle Interference	166	120	-46	-27.7	9	2	-7	-77.8	5.4	1.7	-3.8
- Theft	2828	3083	255	9.0	771	732	-39	-5.1	27.3	23.7	-3.5
- Theft from the Person	121	172	51	42.1	1	6	5	500.0	0.8	3.5	2.7
- Theft of Pedal Cycle	235	278	43	18.3	12	5	-7	-58.3	5.1	1.8	-3.3
- Shoplifting	1134	1325	191	16.8	614	600	-14	-2.3	54.1	45.3	-8.9
- Other Theft	1338	1308	-30	-2.2	144	121	-23	-16.0	10.8	9.3	-1.5
Criminal Damage inc. Arson	1422	1709	287	20.2	212	210	-2	-0.9	14.9	12.3	-2.6
- Criminal Damage	1376	1628	252	18.3	207	202	-5	-2.4	15.0	12.4	-2.6
- Arson	46	81	35	76.1	5	8	3	60.0	10.9	9.9	-1.0
Racial/Religiously Aggravated Offences	155	138	-17	-11.0	38	22	-16	-42.1	24.5	15.9	-8.6
State Based Crime	Offences				Outcomes				Solved Rates %		
Crime Type	2015	2016	# diff.	% diff.	2015	2016	# diff.	% diff.	2015	2016	% pt. diff.
Drug Offences	290	290	0	0.0	273	253	-20	-7.3	94.1	87.2	-6.9
- Trafficking of Drugs	48	48	0	0.0	38	30	-8	-21.1	79.2	62.5	-16.7
- Possession of Drugs	242	242	0	0.0	235	223	-12	-5.1	97.1	92.1	-5.0
Possession of Weapons	69	86	17	24.6	48	55	7	14.6	69.6	64.0	-5.6
Public Order	404	604	200	49.5	161	160	-1	-0.6	39.9	26.5	-13.4
Miscellaneous Crimes against Society	118	170	52	44.1	56	71	15	26.8	47.5	41.8	-5.7

Corporate Services: Performance Summary
Essex Police Performance Summary

Epping
Cumulative Year to March

Top Level	Offences				Outcomes				Solved Rates %		
Crime Type	2015	2016	# diff.	% diff.	2015	2016	# diff.	% diff.	2015	2016	% pt. diff.
Anti-Social Behaviour (incidents)	3751	3604	-147	-3.9	-	-	-	-	-	-	-
All Crime (excl. Action (NFIB) Fraud)	6689	7389	700	10.5	1241	1132	-109	-8.8	18.6	15.3	-3.2
- State Based Crime	593	724	131	22.1	330	310	-20	-6.1	55.6	42.8	-12.8
- Victim Based Crime	6096	6665	569	9.3	911	822	-89	-9.8	14.9	12.3	-2.6
Victim Based Crime	Offences				Outcomes				Solved Rates %		
Crime Type	2015	2016	# diff.	% diff.	2015	2016	# diff.	% diff.	2015	2016	% pt. diff.
Violence Against the Person	1377	1766	389	28.2	405	390	-15	-3.7	29.4	22.1	-7.3
- Homicide	0	2	2	-	0	1	1	-	-	50.0	-
- Violence with Injury	596	670	74	12.4	193	173	-20	-10.4	32.4	25.8	-6.6
- Violence without Injury	781	1094	313	40.1	212	216	4	1.9	27.1	19.7	-7.4
Sexual Offences	134	127	-7	-5.2	20	13	-7	-35.0	14.9	10.2	-4.7
- Rape	55	37	-18	-32.7	5	6	1	20.0	9.1	16.2	7.1
- Rape - Under 16 yrs	17	11	-6	-35.3	1	1	0	0.0	5.9	9.1	3.2
- Rape - Over 16 yrs	38	26	-12	-31.6	4	5	1	25.0	10.5	19.2	8.7
- Other Sexual Offences	79	90	11	13.9	15	7	-8	-53.3	19.0	7.8	-11.2
Robbery	89	84	-5	-5.6	20	6	-14	-70.0	22.5	7.1	-15.3
- Robbery of business property	3	6	3	100.0	0	1	1	-	0.0	16.7	16.7
- Robbery of Personal Property	86	78	-8	-9.3	20	5	-15	-75.0	23.3	6.4	-16.8
Theft Offences	3608	3830	222	6.2	353	300	-53	-15.0	9.8	7.8	-2.0
- Burglary	1094	1074	-20	-1.8	80	64	-16	-20.0	7.3	6.0	-1.4
- Dwelling Burglary	731	686	-45	-6.2	73	52	-21	-28.8	10.0	7.6	-2.4
- Other Burglary	363	388	25	6.9	7	12	5	71.4	1.9	3.1	1.2
- Vehicle Offences (incl. Interference)	1043	1243	200	19.2	26	96	70	269.2	2.5	7.7	5.2
- Theft from Vehicle	602	709	107	17.8	6	61	55	916.7	1.0	8.6	7.6
- Theft of Motor Vehicle	346	406	60	17.3	14	30	16	114.3	4.0	7.4	3.3
- Vehicle Interference	95	128	33	34.7	6	5	-1	-16.7	6.3	3.9	-2.4
- Theft	1471	1513	42	2.9	247	140	-107	-43.3	16.8	9.3	-7.5
- Theft from the Person	81	70	-11	-13.6	1	0	-1	-100.0	1.2	0.0	-1.2
- Theft of Pedal Cycle	50	74	24	48.0	3	2	-1	-33.3	6.0	2.7	-3.3
- Shoplifting	459	436	-23	-5.0	141	103	-38	-27.0	30.7	23.6	-7.1
- Other Theft	881	933	52	5.9	102	35	-67	-65.7	11.6	3.8	-7.8
Criminal Damage inc. Arson	888	858	-30	-3.4	113	113	0	0.0	12.7	13.2	0.4
- Criminal Damage	860	835	-25	-2.9	113	111	-2	-1.8	13.1	13.3	0.2
- Arson	28	23	-5	-17.9	0	2	2	-	0.0	8.7	8.7
Racial/Religiously Aggravated Offences	74	66	-8	-10.8	20	12	-8	-40.0	27.0	18.2	-8.8
State Based Crime	Offences				Outcomes				Solved Rates %		
Crime Type	2015	2016	# diff.	% diff.	2015	2016	# diff.	% diff.	2015	2016	% pt. diff.
Drug Offences	155	188	33	21.3	133	167	34	25.6	85.8	88.8	3.0
- Trafficking of Drugs	21	42	21	100.0	11	26	15	136.4	52.4	61.9	9.5
- Possession of Drugs	134	146	12	9.0	122	141	19	15.6	91.0	96.6	5.5
Possession of Weapons	36	38	2	5.6	24	31	7	29.2	66.7	81.6	14.9
Public Order	309	398	89	28.8	135	76	-59	-43.7	43.7	19.1	-24.6
Miscellaneous Crimes against Society	93	100	7	7.5	38	36	-2	-5.3	40.9	36.0	-4.9

Corporate Services: Performance Summary
Essex Police Performance Summary

Harlow

Cumulative Year to March

Top Level	Offences				Outcomes				Solved Rates %		
Crime Type	2015	2016	# diff.	% diff.	2015	2016	# diff.	% diff.	2015	2016	% pt. diff.
Anti-Social Behaviour (incidents)	4360	3766	-594	-13.6	-	-	-	-	-	-	-
All Crime (excl. Action (NFIB) Fraud)	6748	7206	458	6.8	2126	1814	-312	-14.7	31.5	25.2	-6.3
- State Based Crime	734	781	47	6.4	534	418	-116	-21.7	72.8	53.5	-19.2
- Victim Based Crime	6014	6425	411	6.8	1592	1396	-196	-12.3	26.5	21.7	-4.7
Victim Based Crime	Offences				Outcomes				Solved Rates %		
Crime Type	2015	2016	# diff.	% diff.	2015	2016	# diff.	% diff.	2015	2016	% pt. diff.
Violence Against the Person	1487	1836	349	23.5	572	516	-56	-9.8	38.5	28.1	-10.4
- Homicide	0	6	6	-	0	2	2	-	-	33.3	-
- Violence with Injury	654	709	55	8.4	241	223	-18	-7.5	36.9	31.5	-5.4
- Violence without Injury	833	1121	288	34.6	331	291	-40	-12.1	39.7	26.0	-13.8
Sexual Offences	153	199	46	30.1	22	31	9	40.9	14.4	15.6	1.2
- Rape	55	60	5	9.1	9	5	-4	-44.4	16.4	8.3	-8.0
- Rape - Under 16 yrs	19	15	-4	-21.1	2	1	-1	-50.0	10.5	6.7	-3.9
- Rape - Over 16 yrs	36	45	9	25.0	7	4	-3	-42.9	19.4	8.9	-10.6
- Other Sexual Offences	98	139	41	41.8	13	26	13	100.0	13.3	18.7	5.4
Robbery	102	63	-39	-38.2	16	14	-2	-12.5	15.7	22.2	6.5
- Robbery of business property	8	3	-5	-62.5	0	1	1	-	0.0	33.3	33.3
- Robbery of Personal Property	94	60	-34	-36.2	16	13	-3	-18.8	17.0	21.7	4.6
Theft Offences	3382	3443	61	1.8	824	701	-123	-14.9	24.4	20.4	-4.0
- Burglary	696	637	-59	-8.5	85	28	-57	-67.1	12.2	4.4	-7.8
- Dwelling Burglary	346	312	-34	-9.8	66	20	-46	-69.7	19.1	6.4	-12.7
- Other Burglary	350	325	-25	-7.1	19	8	-11	-57.9	5.4	2.5	-3.0
- Vehicle Offences (incl. Interference)	701	897	196	28.0	40	123	83	207.5	5.7	13.7	8.0
- Theft from Vehicle	475	591	116	24.4	15	90	75	500.0	3.2	15.2	12.1
- Theft of Motor Vehicle	162	210	48	29.6	24	21	-3	-12.5	14.8	10.0	-4.8
- Vehicle Interference	64	96	32	50.0	1	12	11	1100.0	1.6	12.5	10.9
- Theft	1985	1909	-76	-3.8	699	550	-149	-21.3	35.2	28.8	-6.4
- Theft from the Person	85	122	37	43.5	1	4	3	300.0	1.2	3.3	2.1
- Theft of Pedal Cycle	117	144	27	23.1	6	4	-2	-33.3	5.1	2.8	-2.4
- Shoplifting	1116	947	-169	-15.1	612	481	-131	-21.4	54.8	50.8	-4.0
- Other Theft	667	696	29	4.3	80	61	-19	-23.8	12.0	8.8	-3.2
Criminal Damage inc. Arson	890	884	-6	-0.7	158	134	-24	-15.2	17.8	15.2	-2.6
- Criminal Damage	855	854	-1	-0.1	153	134	-19	-12.4	17.9	15.7	-2.2
- Arson	35	30	-5	-14.3	5	0	-5	-100.0	14.3	0.0	-14.3
Racial/Religiously Aggravated Offences	83	55	-28	-33.7	28	24	-4	-14.3	33.7	43.6	9.9
State Based Crime	Offences				Outcomes				Solved Rates %		
Crime Type	2015	2016	# diff.	% diff.	2015	2016	# diff.	% diff.	2015	2016	% pt. diff.
Drug Offences	276	242	-34	-12.3	274	212	-62	-22.6	99.3	87.6	-11.7
- Trafficking of Drugs	56	45	-11	-19.6	60	31	-29	-48.3	107.1	68.9	-38.3
- Possession of Drugs	220	197	-23	-10.5	214	181	-33	-15.4	97.3	91.9	-5.4
Possession of Weapons	43	51	8	18.6	39	36	-3	-7.7	90.7	70.6	-20.1
Public Order	335	402	67	20.0	180	142	-38	-21.1	53.7	35.3	-18.4
Miscellaneous Crimes against Society	80	86	6	7.5	41	28	-13	-31.7	51.3	32.6	-18.7

Corporate Services: Performance Summary
Essex Police Performance Summary

Brentwood
Cumulative Year to March

Top Level	Offences				Outcomes				Solved Rates %		
Crime Type	2015	2016	# diff.	% diff.	2015	2016	# diff.	% diff.	2015	2016	% pt. diff.
Anti-Social Behaviour (incidents)	1935	2011	76	3.9	-	-	-	-	-	-	-
All Crime (excl. Action (NFIB) Fraud)	3488	3823	335	9.6	747	572	-175	-23.4	21.4	15.0	-6.5
- State Based Crime	229	248	19	8.3	166	96	-70	-42.2	72.5	38.7	-33.8
- Victim Based Crime	3259	3575	316	9.7	581	476	-105	-18.1	17.8	13.3	-4.5
Victim Based Crime	Offences				Outcomes				Solved Rates %		
Crime Type	2015	2016	# diff.	% diff.	2015	2016	# diff.	% diff.	2015	2016	% pt. diff.
Violence Against the Person	671	741	70	10.4	222	173	-49	-22.1	33.1	23.3	-9.7
- Homicide	1	1	0	0.0	1	0	-1	-100.0	100.0	0.0	-100.0
- Violence with Injury	275	318	43	15.6	94	83	-11	-11.7	34.2	26.1	-8.1
- Violence without Injury	395	422	27	6.8	127	90	-37	-29.1	32.2	21.3	-10.8
Sexual Offences	60	75	15	25.0	14	3	-11	-78.6	23.3	4.0	-19.3
- Rape	12	25	13	108.3	3	1	-2	-66.7	25.0	4.0	-21.0
- Rape - Under 16 yrs	4	6	2	50.0	3	0	-3	-100.0	75.0	0.0	-75.0
- Rape - Over 16 yrs	8	19	11	137.5	0	1	1	-	0.0	5.3	5.3
- Other Sexual Offences	48	50	2	4.2	11	2	-9	-81.8	22.9	4.0	-18.9
Robbery	18	32	14	77.8	5	8	3	60.0	27.8	25.0	-2.8
- Robbery of business property	3	4	1	33.3	1	2	1	100.0	33.3	50.0	16.7
- Robbery of Personal Property	15	28	13	86.7	4	6	2	50.0	26.7	21.4	-5.2
Theft Offences	2102	2200	98	4.7	285	246	-39	-13.7	13.6	11.2	-2.4
- Burglary	639	634	-5	-0.8	90	68	-22	-24.4	14.1	10.7	-3.4
- Dwelling Burglary	442	399	-43	-9.7	78	55	-23	-29.5	17.6	13.8	-3.9
- Other Burglary	197	235	38	19.3	12	13	1	8.3	6.1	5.5	-0.6
- Vehicle Offences (incl. Interference)	645	726	81	12.6	26	29	3	11.5	4.0	4.0	0.0
- Theft from Vehicle	418	420	2	0.5	8	14	6	75.0	1.9	3.3	1.4
- Theft of Motor Vehicle	169	231	62	36.7	17	6	-11	-64.7	10.1	2.6	-7.5
- Vehicle Interference	58	75	17	29.3	1	9	8	800.0	1.7	12.0	10.3
- Theft	818	840	22	2.7	169	149	-20	-11.8	20.7	17.7	-2.9
- Theft from the Person	32	70	38	118.8	2	0	-2	-100.0	6.3	0.0	-6.3
- Theft of Pedal Cycle	55	45	-10	-18.2	1	2	1	100.0	1.8	4.4	2.6
- Shoplifting	190	233	43	22.6	103	108	5	4.9	54.2	46.4	-7.9
- Other Theft	541	492	-49	-9.1	63	39	-24	-38.1	11.6	7.9	-3.7
Criminal Damage inc. Arson	408	527	119	29.2	55	46	-9	-16.4	13.5	8.7	-4.8
- Criminal Damage	398	513	115	28.9	54	46	-8	-14.8	13.6	9.0	-4.6
- Arson	10	14	4	40.0	1	0	-1	-100.0	10.0	0.0	-10.0
Racial/Religiously Aggravated Offences	28	17	-11	-39.3	8	4	-4	-50.0	28.6	23.5	-5.0
State Based Crime	Offences				Outcomes				Solved Rates %		
Crime Type	2015	2016	# diff.	% diff.	2015	2016	# diff.	% diff.	2015	2016	% pt. diff.
Drug Offences	85	41	-44	-51.8	85	37	-48	-56.5	100.0	90.2	-9.8
- Trafficking of Drugs	7	10	3	42.9	7	9	2	28.6	100.0	90.0	-10.0
- Possession of Drugs	78	31	-47	-60.3	78	28	-50	-64.1	100.0	90.3	-9.7
Possession of Weapons	13	18	5	38.5	11	13	2	18.2	84.6	72.2	-12.4
Public Order	99	148	49	49.5	54	37	-17	-31.5	54.5	25.0	-29.5
Miscellaneous Crimes against Society	32	41	9	28.1	16	9	-7	-43.8	50.0	22.0	-28.0