

## Corporate Services

# Essex Police Performance Summary to December 2015

---



Date: 15th January 2016

Unit: Performance Information Unit

Contact: David Howard

# Corporate Services: Performance Summary

## Essex Police Performance Summary: To December 2015

### 1. Introduction

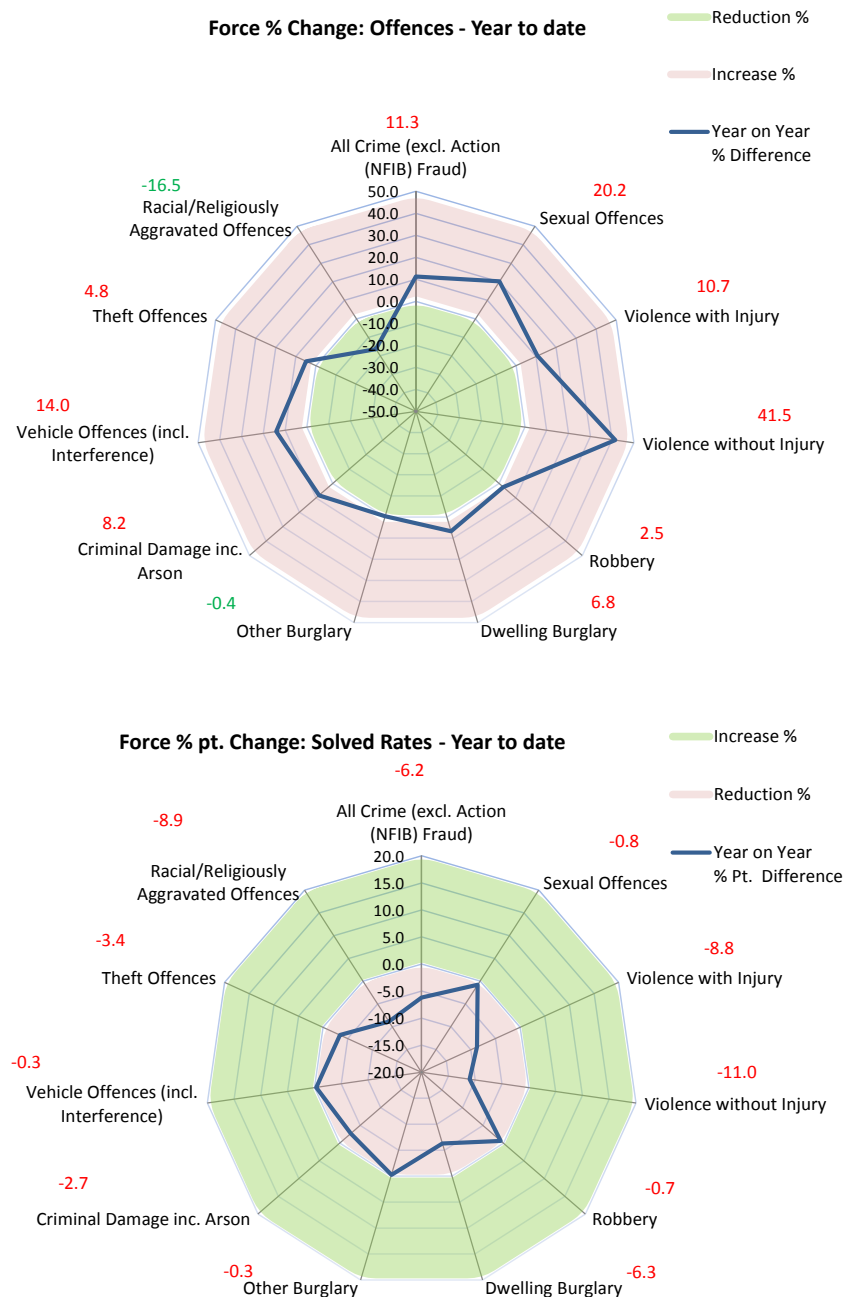
This performance summary is designed to pictorially represent how individual districts are performing within each crime type.

The report includes:

- Charts to show the cumulative (from April) percentage differences between the number of offences, and the percentage pt. differences between the solved rates, in each district, for the current period compared to the same period the previous year.
- Tables of data relating to both cumulative and rolling figures for this district.

*Solved Rate: Essex Police could potentially still be under-extracting the number of crimes that have been solved.*

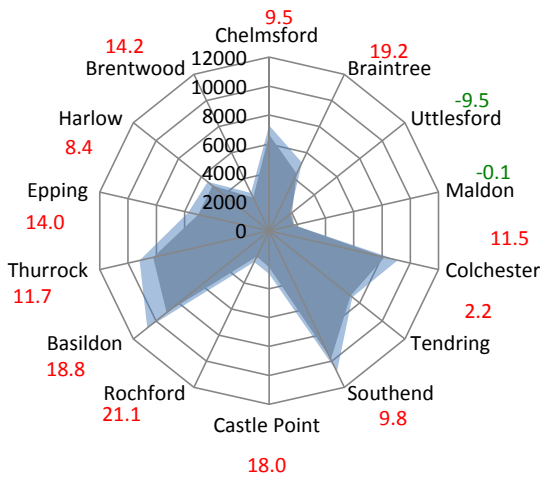
### 2. Current Position



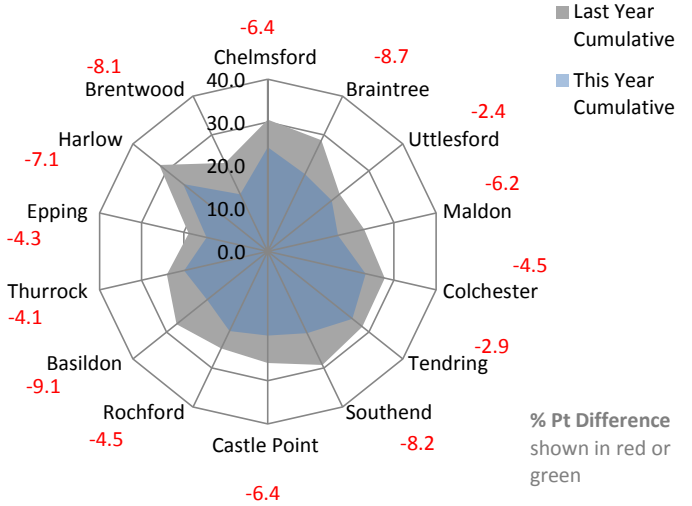
# Corporate Services: Performance Summary

## Essex Police Performance Summary: To December 2015

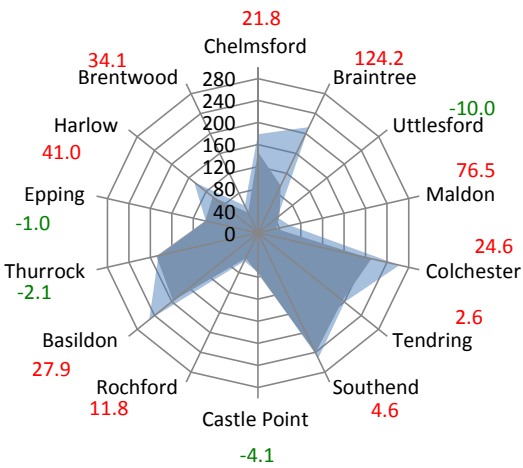
All Crime Offences - Year to date



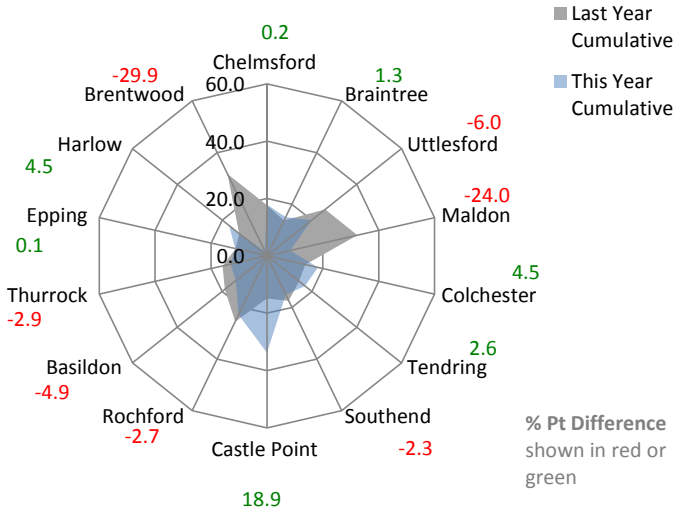
All Crime Solved Rate - Year to date



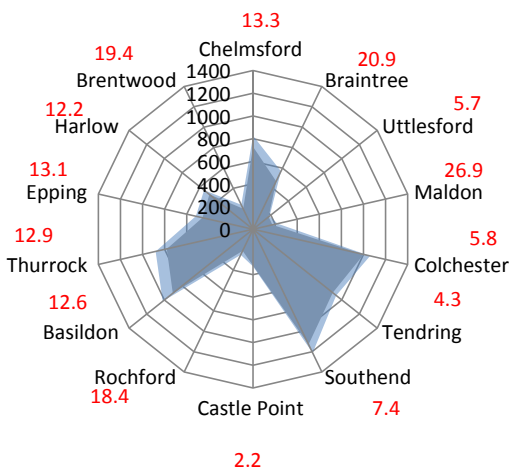
Sexual Offences - Year to date



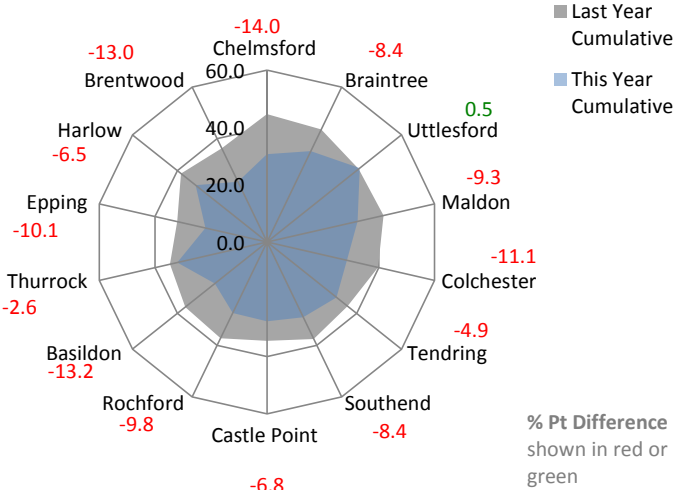
Sexual Offences Solved Rate - Year to date



Violence with Injury Offences - Year to date



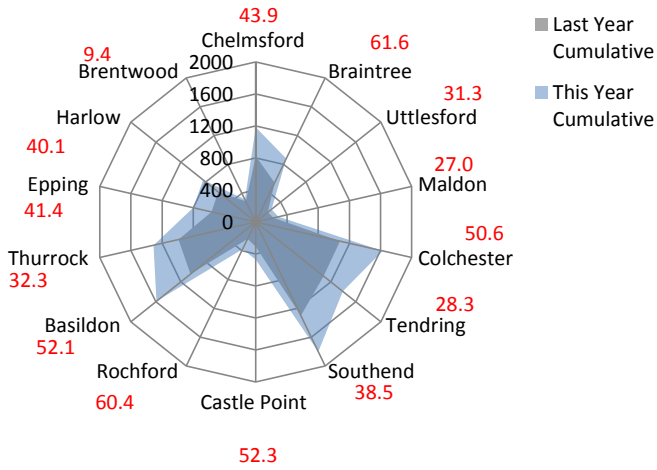
Violence with Injury Solved Rate - Year to date



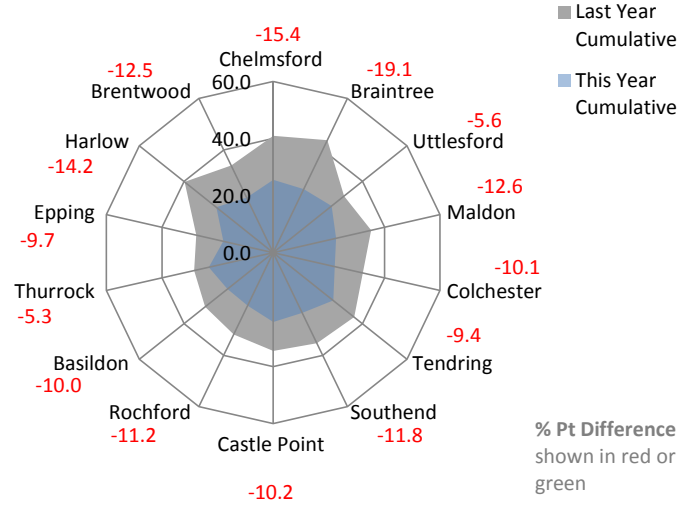
# Corporate Services: Performance Summary

## Essex Police Performance Summary: To December 2015

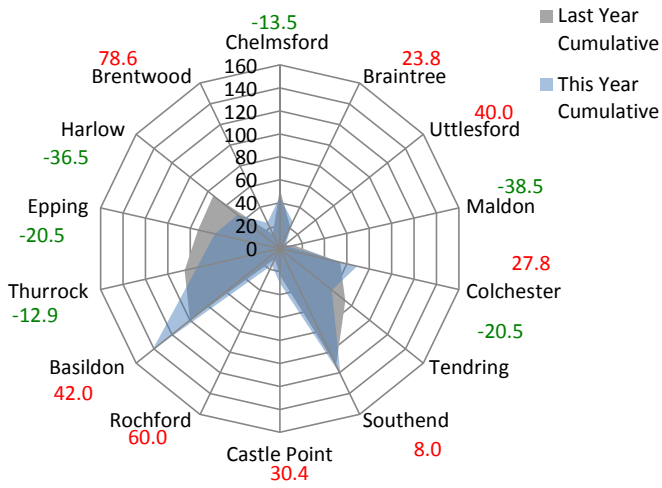
Violence without Injury Offences - Year to date



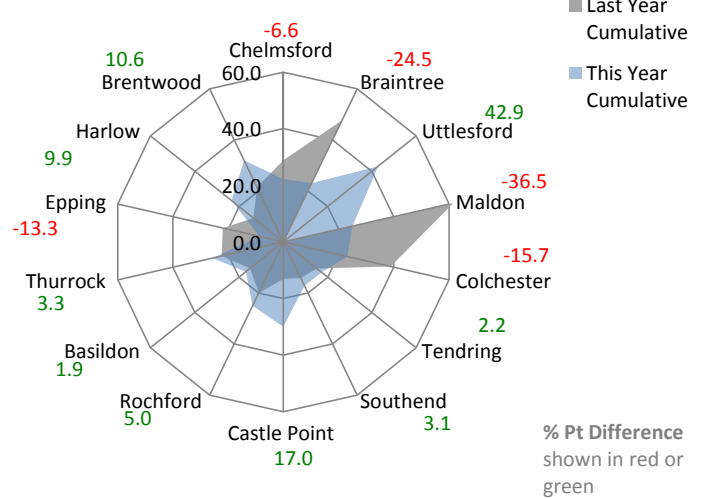
Violence without Injury Solved Rate - Year to date



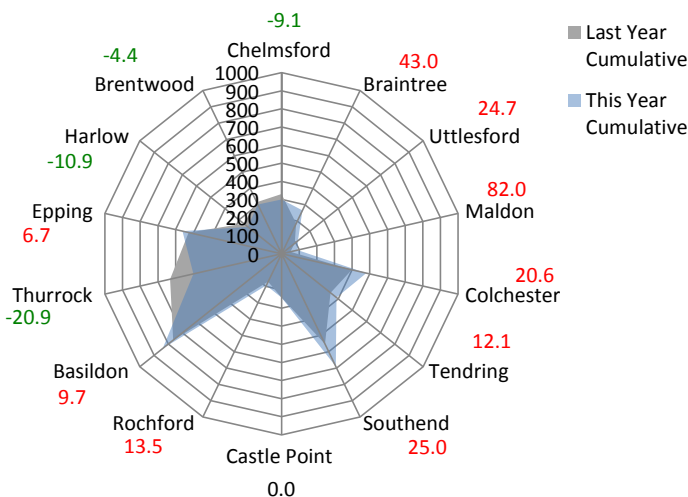
Robbery Offences - Year to date



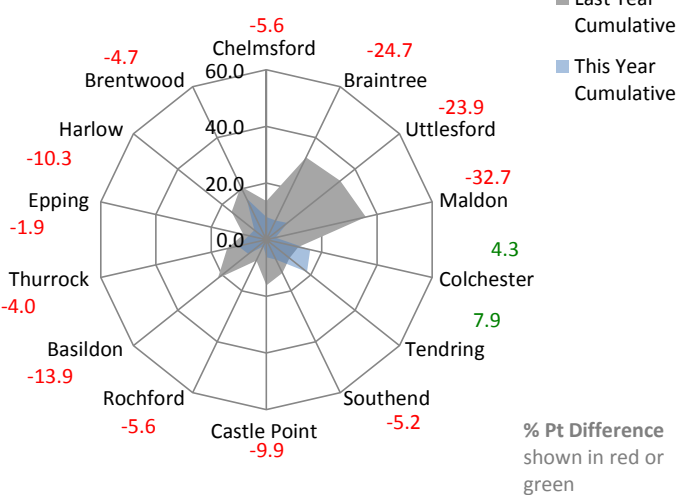
Robbery Solved Rate - Year to date



Dwelling Burglary Offences - Year to date



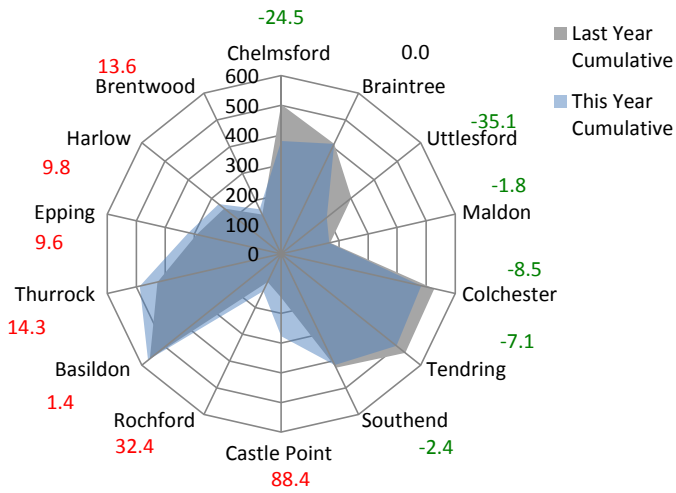
Dwelling Burglary Solved Rate - Year to date



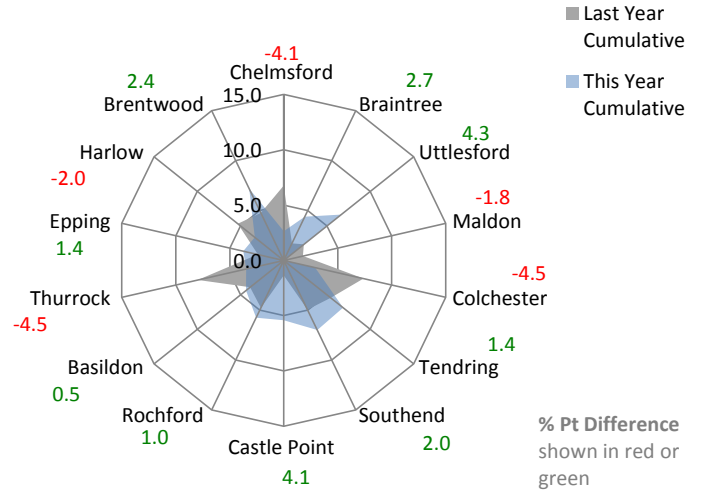
# Corporate Services: Performance Summary

## Essex Police Performance Summary: To December 2015

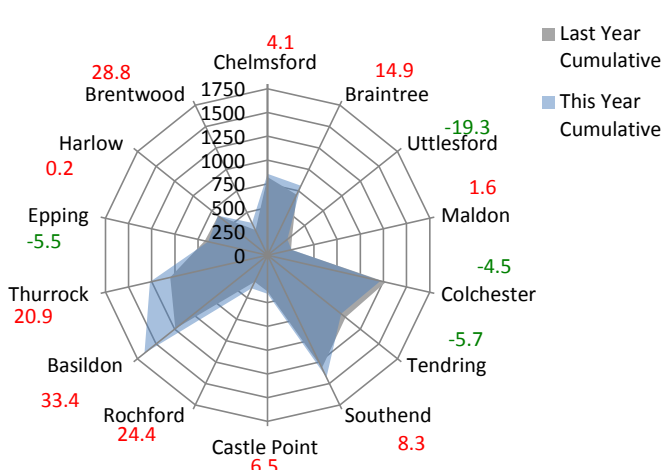
Other Burglary Offences - Year to date



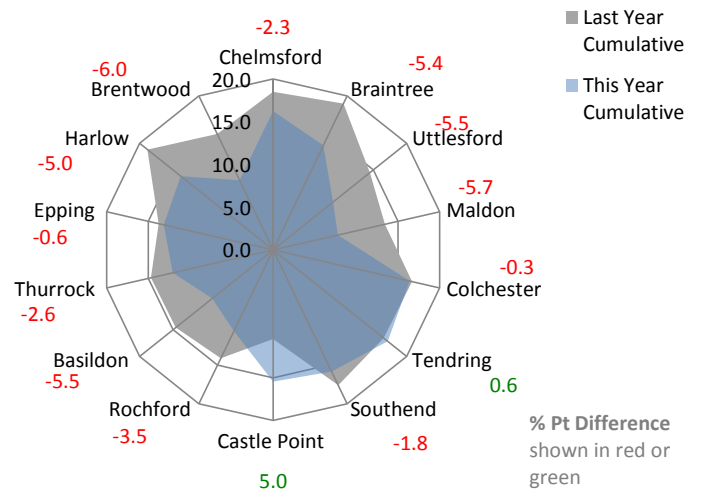
Other Burglary Solved Rate - Year to date



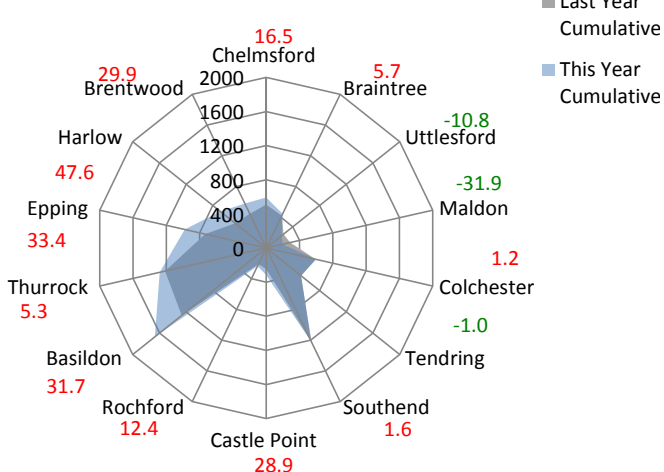
Criminal Damage Offences - Year to date



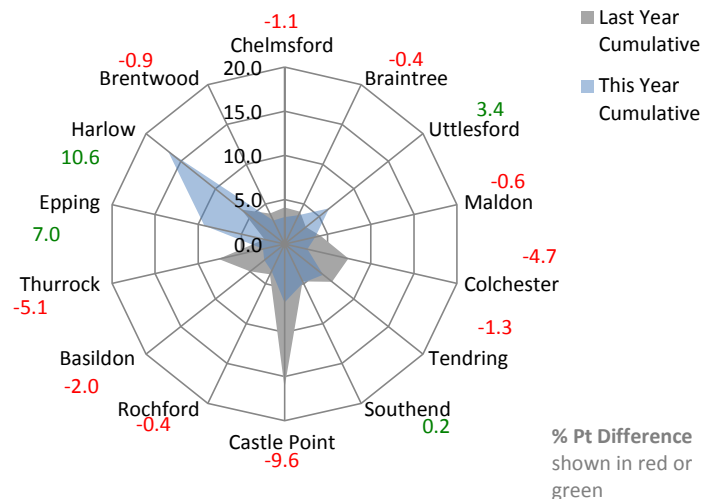
Criminal Damage Solved Rate - Year to date



Vehicle Offences - Year to date



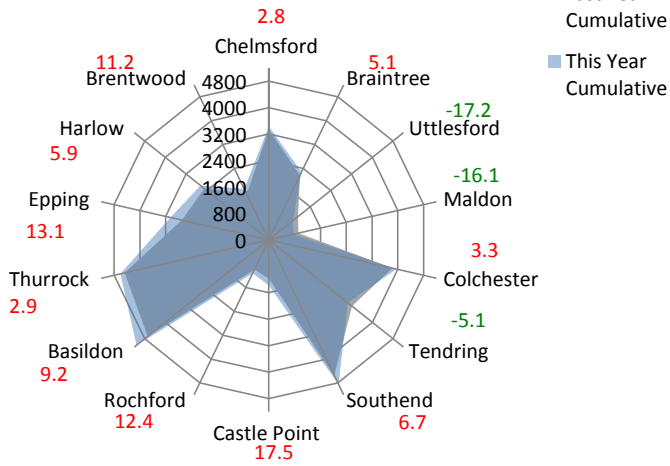
Vehicle Offences Solved Rate - Year to date



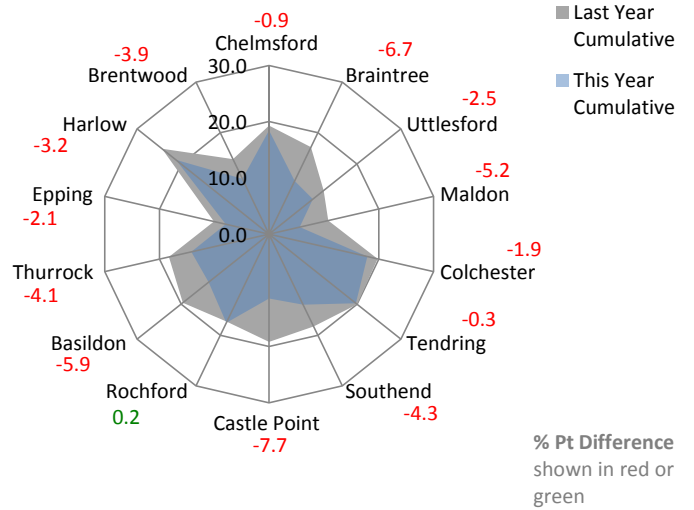
# Corporate Services: Performance Summary

## Essex Police Performance Summary: To December 2015

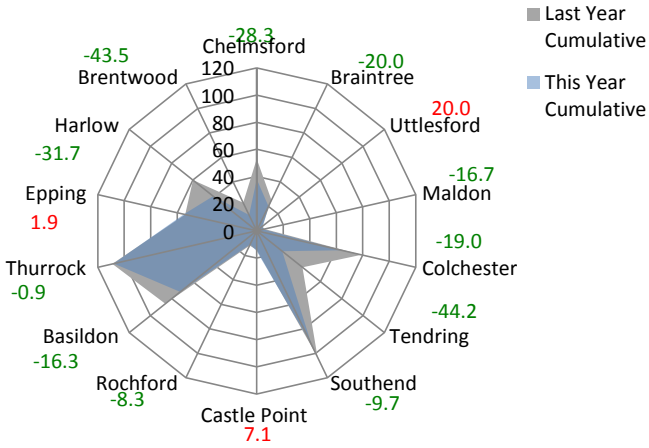
**Theft Offences - Year to date**



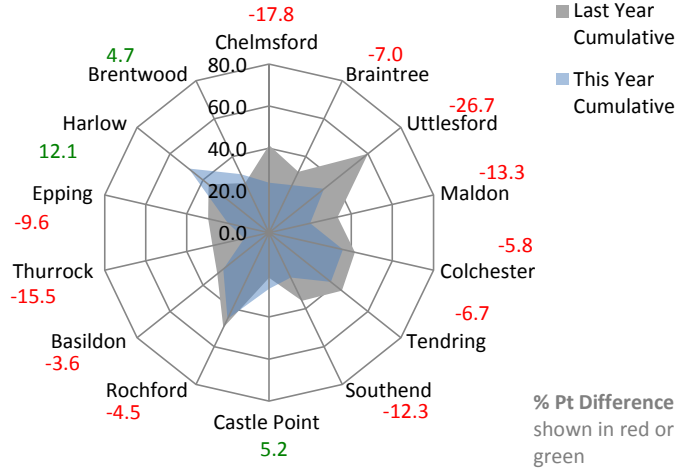
**Theft Offences Solved Rate - Year to date**



**Racial / Religiously Aggravated Offences - Year to date % Difference**



**Racial/Religiously Aggravated Offences Solved Rate - Year to date**





**Corporate Services: Performance Summary**  
**Essex Police Performance Summary**

**Force**  
**Cumulative Year to December**

Top Level	Offences				Outcomes				Solved Rates %		
Crime Type	2014	2015	# diff.	% diff.	2014	2015	# diff.	% diff.	2014	2015	% pt. diff.
Anti-Social Behaviour (incidents)	44134	41210	-2924	-6.6	-	-	-	-	-	-	-
All Crime (excl. Action (NFIB) Fraud)	75179	83639	8460	11.3	20482	17611	-2871	-14.0	27.2	21.1	-6.2
- State Based Crime	7485	8196	711	9.5	5266	4112	-1154	-21.9	70.4	50.2	-20.2
- Victim Based Crime	67694	75443	7749	11.4	15216	13499	-1717	-11.3	22.5	17.9	-4.6
Victim Based Crime	Offences				Outcomes				Solved Rates %		
Crime Type	2014	2015	# diff.	% diff.	2014	2015	# diff.	% diff.	2014	2015	% pt. diff.
Violence Against the Person	17275	22003	4728	27.4	6240	5676	-564	-9.0	36.1	25.8	-10.3
- Homicide	11	26	15	136.4	7	15	8	114.3	63.6	57.7	-5.9
- Violence with Injury	7959	8814	855	10.7	3027	2579	-448	-14.8	38.0	29.3	-8.8
- Violence without Injury	9305	13163	3858	41.5	3206	3082	-124	-3.9	34.5	23.4	-11.0
Sexual Offences	1733	2083	350	20.2	292	334	42	14.4	16.8	16.0	-0.8
- Rape	639	726	87	13.6	91	85	-6	-6.6	14.2	11.7	-2.5
- Rape - Under 16 yrs	200	244	44	22.0	43	38	-5	-11.6	21.5	15.6	-5.9
- Rape - Over 16 yrs	439	482	43	9.8	48	47	-1	-2.1	10.9	9.8	-1.2
- Other Sexual Offences	1094	1357	263	24.0	201	249	48	23.9	18.4	18.3	0.0
Robbery	710	728	18	2.5	149	148	-1	-0.7	21.0	20.3	-0.7
- Robbery of business property	66	68	2	3.0	19	35	16	84.2	28.8	51.5	22.7
- Robbery of Personal Property	644	660	16	2.5	130	113	-17	-13.1	20.2	17.1	-3.1
Theft Offences	37582	39381	1799	4.8	6853	5828	-1025	-15.0	18.2	14.8	-3.4
- Burglary	9676	9990	314	3.2	1001	713	-288	-28.8	10.3	7.1	-3.2
- Dwelling Burglary	4874	5207	333	6.8	771	496	-275	-35.7	15.8	9.5	-6.3
- Other Burglary	4802	4783	-19	-0.4	230	217	-13	-5.7	4.8	4.5	-0.3
- Vehicle Offences (incl. Interference)	8415	9595	1180	14.0	464	497	33	7.1	5.5	5.2	-0.3
- Theft from Vehicle	5468	6159	691	12.6	178	245	67	37.6	3.3	4.0	0.7
- Theft of Motor Vehicle	2153	2454	301	14.0	262	216	-46	-17.6	12.2	8.8	-3.4
- Vehicle Interference	794	982	188	23.7	24	36	12	50.0	3.0	3.7	0.6
- Theft	19491	19796	305	1.6	5388	4618	-770	-14.3	27.6	23.3	-4.3
- Theft from the Person	1064	1330	266	25.0	31	47	16	51.6	2.9	3.5	0.6
- Theft of Pedal Cycle	1808	1806	-2	-0.1	77	67	-10	-13.0	4.3	3.7	-0.5
- Shoplifting	6949	7431	482	6.9	4130	3700	-430	-10.4	59.4	49.8	-9.6
- Other Theft	9670	9229	-441	-4.6	1150	804	-346	-30.1	11.9	8.7	-3.2
Criminal Damage inc. Arson	10394	11248	854	8.2	1682	1513	-169	-10.0	16.2	13.5	-2.7
- Criminal Damage	10052	10871	819	8.1	1639	1481	-158	-9.6	16.3	13.6	-2.7
- Arson	342	377	35	10.2	43	32	-11	-25.6	12.6	8.5	-4.1
Racial/Religiously Aggravated Offences	680	568	-112	-16.5	241	151	-90	-37.3	35.4	26.6	-8.9
State Based Crime	Offences				Outcomes				Solved Rates %		
Crime Type	2014	2015	# diff.	% diff.	2014	2015	# diff.	% diff.	2014	2015	% pt. diff.
Drug Offences	2870	2081	-789	-27.5	2727	1874	-853	-31.3	95.0	90.1	-5.0
- Trafficking of Drugs	538	474	-64	-11.9	469	344	-125	-26.7	87.2	72.6	-14.6
- Possession of Drugs	2332	1607	-725	-31.1	2258	1530	-728	-32.2	96.8	95.2	-1.6
Possession of Weapons	690	731	41	5.9	574	557	-17	-3.0	83.2	76.2	-7.0
Public Order	3013	4232	1219	40.5	1483	1257	-226	-15.2	49.2	29.7	-19.5
Miscellaneous Crimes against Society	912	1152	240	26.3	482	424	-58	-12.0	52.9	36.8	-16.0

**Corporate Services: Performance Summary**  
**Essex Police Performance Summary**

**Force**

**Rolling 12 Months to December**

Top Level	Offences				Outcomes				Solved Rates %		
Crime Type	2014	2015	# diff.	% diff.	2014	2015	# diff.	% diff.	2014	2015	% pt. diff.
<b>Anti-Social Behaviour (incidents)</b>	54465	53417	-1048	-1.9	-	-	-	-	-	-	-
<b>All Crime (excl. Action (NFIB) Fraud)</b>	99418	108238	8820	8.9	27450	24169	-3281	-12.0	27.6	22.3	-5.3
- State Based Crime	9855	10510	655	6.6	7094	5716	-1378	-19.4	72.0	54.4	-17.6
- Victim Based Crime	89563	97728	8165	9.1	20356	18453	-1903	-9.3	22.7	18.9	-3.8
Victim Based Crime	Offences				Outcomes				Solved Rates %		
Crime Type	2014	2015	# diff.	% diff.	2014	2015	# diff.	% diff.	2014	2015	% pt. diff.
<b>Violence Against the Person</b>	22268	27620	5352	24.0	8211	7717	-494	-6.0	36.9	27.9	-8.9
- Homicide	14	26	12	85.7	11	15	4	36.4	78.6	57.7	-20.9
- Violence with Injury	10311	11188	877	8.5	3979	3501	-478	-12.0	38.6	31.3	-7.3
- Violence without Injury	11943	16406	4463	37.4	4221	4201	-20	-0.5	35.3	25.6	-9.7
<b>Sexual Offences</b>	2206	2785	579	26.2	396	464	68	17.2	18.0	16.7	-1.3
- Rape	815	969	154	18.9	122	125	3	2.5	15.0	12.9	-2.1
- Rape - Under 16 yrs	254	326	72	28.3	62	56	-6	-9.7	24.4	17.2	-7.2
- Rape - Over 16 yrs	561	643	82	14.6	60	69	9	15.0	10.7	10.7	0.0
- Other Sexual Offences	1391	1816	425	30.6	274	339	65	23.7	19.7	18.7	-1.0
<b>Robbery</b>	937	977	40	4.3	192	207	15	7.8	20.5	21.2	0.7
- Robbery of business property	88	107	19	21.6	22	44	22	100.0	25.0	41.1	16.1
- Robbery of Personal Property	849	870	21	2.5	170	163	-7	-4.1	20.0	18.7	-1.3
<b>Theft Offences</b>	50283	51735	1452	2.9	9285	8050	-1235	-13.3	18.5	15.6	-2.9
- Burglary	13150	13372	222	1.7	1291	1068	-223	-17.3	9.8	8.0	-1.8
- Dwelling Burglary	6799	7078	279	4.1	954	743	-211	-22.1	14.0	10.5	-3.5
- Other Burglary	6351	6294	-57	-0.9	337	325	-12	-3.6	5.3	5.2	-0.1
- Vehicle Offences (incl. Interference)	11392	12804	1412	12.4	590	664	74	12.5	5.2	5.2	0.0
- Theft from Vehicle	7534	8200	666	8.8	232	307	75	32.3	3.1	3.7	0.7
- Theft of Motor Vehicle	2887	3242	355	12.3	332	310	-22	-6.6	11.5	9.6	-1.9
- Vehicle Interference	971	1362	391	40.3	26	47	21	80.8	2.7	3.5	0.8
- Theft	25741	25559	-182	-0.7	7404	6318	-1086	-14.7	28.8	24.7	-4.0
- Theft from the Person	1418	1614	196	13.8	43	54	11	25.6	3.0	3.3	0.3
- Theft of Pedal Cycle	2239	2213	-26	-1.2	111	89	-22	-19.8	5.0	4.0	-0.9
- Shoplifting	9375	9719	344	3.7	5677	5015	-662	-11.7	60.6	51.6	-9.0
- Other Theft	12709	12013	-696	-5.5	1573	1160	-413	-26.3	12.4	9.7	-2.7
<b>Criminal Damage inc. Arson</b>	13869	14611	742	5.4	2272	2015	-257	-11.3	16.4	13.8	-2.6
- Criminal Damage	13427	14124	697	5.2	2215	1963	-252	-11.4	16.5	13.9	-2.6
- Arson	442	487	45	10.2	57	52	-5	-8.8	12.9	10.7	-2.2
<b>Racial/Religiously Aggravated Offences</b>	869	785	-84	-9.7	301	222	-79	-26.2	34.6	28.3	-6.4
State Based Crime	Offences				Outcomes				Solved Rates %		
Crime Type	2014	2015	# diff.	% diff.	2014	2015	# diff.	% diff.	2014	2015	% pt. diff.
<b>Drug Offences</b>	3859	2915	-944	-24.5	3684	2698	-986	-26.8	95.5	92.6	-2.9
- Trafficking of Drugs	725	620	-105	-14.5	640	480	-160	-25.0	88.3	77.4	-10.9
- Possession of Drugs	3134	2295	-839	-26.8	3044	2218	-826	-27.1	97.1	96.6	-0.5
<b>Possession of Weapons</b>	895	937	42	4.7	759	736	-23	-3.0	84.8	78.5	-6.3
<b>Public Order</b>	3878	5168	1290	33.3	1951	1680	-271	-13.9	50.3	32.5	-17.8
<b>Miscellaneous Crimes against Society</b>	1223	1490	267	21.8	700	602	-98	-14.0	57.2	40.4	-16.8



Corporate Services: Performance Summary  
Essex Police Performance Summary

Chelmsford  
Cumulative Year to December

Top Level	Offences				Outcomes				Solved Rates %		
Crime Type	2014	2015	# diff.	% diff.	2014	2015	# diff.	% diff.	2014	2015	% pt. diff.
Anti-Social Behaviour (incidents)	3467	3243	-224	-6.5	-	-	-	-	-	-	-
All Crime (excl. Action (NFIB) Fraud)	6654	7285	631	9.5	2035	1762	-273	-13.4	30.6	24.2	-6.4
- State Based Crime	743	763	20	2.7	534	392	-142	-26.6	71.9	51.4	-20.5
- Victim Based Crime	5911	6522	611	10.3	1501	1370	-131	-8.7	25.4	21.0	-4.4
Victim Based Crime	Offences				Outcomes				Solved Rates %		
Crime Type	2014	2015	# diff.	% diff.	2014	2015	# diff.	% diff.	2014	2015	% pt. diff.
Violence Against the Person	1554	2011	457	29.4	664	556	-108	-16.3	42.7	27.6	-15.1
- Homicide	3	2	-1	-33.3	2	1	-1	-50.0	66.7	50.0	-16.7
- Violence with Injury	728	825	97	13.3	325	253	-72	-22.2	44.6	30.7	-14.0
- Violence without Injury	823	1184	361	43.9	337	302	-35	-10.4	40.9	25.5	-15.4
Sexual Offences	147	179	32	21.8	26	32	6	23.1	17.7	17.9	0.2
- Rape	57	68	11	19.3	9	13	4	44.4	15.8	19.1	3.3
- Rape - Under 16 yrs	16	16	0	0.0	2	3	1	50.0	12.5	18.8	6.3
- Rape - Over 16 yrs	41	52	11	26.8	7	10	3	42.9	17.1	19.2	2.2
- Other Sexual Offences	90	111	21	23.3	17	19	2	11.8	18.9	17.1	-1.8
Robbery	52	45	-7	-13.5	15	10	-5	-33.3	28.8	22.2	-6.6
- Robbery of business property	6	4	-2	-33.3	1	1	0	0.0	16.7	25.0	8.3
- Robbery of Personal Property	46	41	-5	-10.9	14	9	-5	-35.7	30.4	22.0	-8.5
Theft Offences	3337	3432	95	2.8	644	633	-11	-1.7	19.3	18.4	-0.9
- Burglary	833	680	-153	-18.4	79	34	-45	-57.0	9.5	5.0	-4.5
- Dwelling Burglary	330	300	-30	-9.1	45	24	-21	-46.7	13.6	8.0	-5.6
- Other Burglary	503	380	-123	-24.5	34	10	-24	-70.6	6.8	2.6	-4.1
- Vehicle Offences (incl. Interference)	509	593	84	16.5	21	18	-3	-14.3	4.1	3.0	-1.1
- Theft from Vehicle	331	349	18	5.4	2	6	4	200.0	0.6	1.7	1.1
- Theft of Motor Vehicle	142	183	41	28.9	19	12	-7	-36.8	13.4	6.6	-6.8
- Vehicle Interference	36	61	25	69.4	0	0	0	-	0.0	0.0	0.0
- Theft	1995	2159	164	8.2	544	581	37	6.8	27.3	26.9	-0.4
- Theft from the Person	154	159	5	3.2	5	6	1	20.0	3.2	3.8	0.5
- Theft of Pedal Cycle	261	265	4	1.5	13	8	-5	-38.5	5.0	3.0	-2.0
- Shoplifting	642	874	232	36.1	406	508	102	25.1	63.2	58.1	-5.1
- Other Theft	938	861	-77	-8.2	120	59	-61	-50.8	12.8	6.9	-5.9
Criminal Damage inc. Arson	821	855	34	4.1	152	139	-13	-8.6	18.5	16.3	-2.3
- Criminal Damage	797	819	22	2.8	146	137	-9	-6.2	18.3	16.7	-1.6
- Arson	24	36	12	50.0	6	2	-4	-66.7	25.0	5.6	-19.4
Racial/Religiously Aggravated Offences	53	38	-15	-28.3	22	9	-13	-59.1	41.5	23.7	-17.8
State Based Crime	Offences				Outcomes				Solved Rates %		
Crime Type	2014	2015	# diff.	% diff.	2014	2015	# diff.	% diff.	2014	2015	% pt. diff.
Drug Offences	327	257	-70	-21.4	301	236	-65	-21.6	92.0	91.8	-0.2
- Trafficking of Drugs	35	41	6	17.1	26	35	9	34.6	74.3	85.4	11.1
- Possession of Drugs	292	216	-76	-26.0	275	201	-74	-26.9	94.2	93.1	-1.1
Possession of Weapons	41	43	2	4.9	37	34	-3	-8.1	90.2	79.1	-11.2
Public Order	265	343	78	29.4	137	79	-58	-42.3	51.7	23.0	-28.7
Miscellaneous Crimes against Society	110	120	10	9.1	59	43	-16	-27.1	53.6	35.8	-17.8

**Corporate Services: Performance Summary**  
**Essex Police Performance Summary**

**Chelmsford**  
**Rolling 12 Months to December**

Top Level	Offences				Outcomes				Solved Rates %		
Crime Type	2014	2015	# diff.	% diff.	2014	2015	# diff.	% diff.	2014	2015	% pt. diff.
<b>Anti-Social Behaviour (incidents)</b>	4309	4306	-3	-0.1	-	-	-	-	-	-	-
<b>All Crime (excl. Action (NFIB) Fraud)</b>	8830	9523	693	7.8	2743	2411	-332	-12.1	31.1	25.3	-5.7
- State Based Crime	980	1009	29	3.0	706	581	-125	-17.7	72.0	57.6	-14.5
- Victim Based Crime	7850	8514	664	8.5	2037	1830	-207	-10.2	25.9	21.5	-4.5
Victim Based Crime	Offences				Outcomes				Solved Rates %		
Crime Type	2014	2015	# diff.	% diff.	2014	2015	# diff.	% diff.	2014	2015	% pt. diff.
<b>Violence Against the Person</b>	1981	2512	531	26.8	855	756	-99	-11.6	43.2	30.1	-13.1
- Homicide	3	2	-1	-33.3	3	1	-2	-66.7	100.0	50.0	-50.0
- Violence with Injury	934	1049	115	12.3	424	342	-82	-19.3	45.4	32.6	-12.8
- Violence without Injury	1044	1461	417	39.9	428	413	-15	-3.5	41.0	28.3	-12.7
<b>Sexual Offences</b>	189	244	55	29.1	33	35	2	6.1	17.5	14.3	-3.1
- Rape	77	93	16	20.8	10	14	4	40.0	13.0	15.1	2.1
- Rape - Under 16 yrs	22	23	1	4.5	3	4	1	33.3	13.6	17.4	3.8
- Rape - Over 16 yrs	55	70	15	27.3	7	10	3	42.9	12.7	14.3	1.6
- Other Sexual Offences	112	151	39	34.8	23	21	-2	-8.7	20.5	13.9	-6.6
<b>Robbery</b>	70	59	-11	-15.7	18	16	-2	-11.1	25.7	27.1	1.4
- Robbery of business property	7	6	-1	-14.3	1	2	1	100.0	14.3	33.3	19.0
- Robbery of Personal Property	63	53	-10	-15.9	17	14	-3	-17.6	27.0	26.4	-0.6
<b>Theft Offences</b>	4485	4537	52	1.2	919	826	-93	-10.1	20.5	18.2	-2.3
- Burglary	1123	953	-170	-15.1	101	46	-55	-54.5	9.0	4.8	-4.2
- Dwelling Burglary	460	438	-22	-4.8	53	34	-19	-35.8	11.5	7.8	-3.8
- Other Burglary	663	515	-148	-22.3	48	12	-36	-75.0	7.2	2.3	-4.9
- Vehicle Offences (incl. Interference)	686	838	152	22.2	28	26	-2	-7.1	4.1	3.1	-1.0
- Theft from Vehicle	443	526	83	18.7	3	10	7	233.3	0.7	1.9	1.2
- Theft of Motor Vehicle	197	222	25	12.7	24	16	-8	-33.3	12.2	7.2	-5.0
- Vehicle Interference	46	90	44	95.7	1	0	-1	-100.0	2.2	0.0	-2.2
- Theft	2676	2746	70	2.6	790	754	-36	-4.6	29.5	27.5	-2.1
- Theft from the Person	215	191	-24	-11.2	7	7	0	0.0	3.3	3.7	0.4
- Theft of Pedal Cycle	332	354	22	6.6	21	10	-11	-52.4	6.3	2.8	-3.5
- Shoplifting	907	1098	191	21.1	593	647	54	9.1	65.4	58.9	-6.5
- Other Theft	1222	1103	-119	-9.7	169	90	-79	-46.7	13.8	8.2	-5.7
<b>Criminal Damage inc. Arson</b>	1125	1162	37	3.3	212	197	-15	-7.1	18.8	17.0	-1.9
- Criminal Damage	1092	1115	23	2.1	206	192	-14	-6.8	18.9	17.2	-1.6
- Arson	33	47	14	42.4	6	5	-1	-16.7	18.2	10.6	-7.5
<b>Racial/Religiously Aggravated Offences</b>	66	59	-7	-10.6	24	14	-10	-41.7	36.4	23.7	-12.6
State Based Crime	Offences				Outcomes				Solved Rates %		
Crime Type	2014	2015	# diff.	% diff.	2014	2015	# diff.	% diff.	2014	2015	% pt. diff.
<b>Drug Offences</b>	421	369	-52	-12.4	398	350	-48	-12.1	94.5	94.9	0.3
- Trafficking of Drugs	44	56	12	27.3	35	46	11	31.4	79.5	82.1	2.6
- Possession of Drugs	377	313	-64	-17.0	363	304	-59	-16.3	96.3	97.1	0.8
<b>Possession of Weapons</b>	53	57	4	7.5	46	44	-2	-4.3	86.8	77.2	-9.6
<b>Public Order</b>	360	436	76	21.1	180	120	-60	-33.3	50.0	27.5	-22.5
<b>Miscellaneous Crimes against Society</b>	146	147	1	0.7	82	67	-15	-18.3	56.2	45.6	-10.6

**Corporate Services: Performance Summary**  
**Essex Police Performance Summary**

**Braintree**  
**Cumulative Year to December**

Top Level	Offences				Outcomes				Solved Rates %		
Crime Type	2014	2015	# diff.	% diff.	2014	2015	# diff.	% diff.	2014	2015	% pt. diff.
Anti-Social Behaviour (incidents)	2912	2733	-179	-6.1	-	-	-	-	-	-	-
All Crime (excl. Action (NFIB) Fraud)	4387	5229	842	19.2	1257	1041	-216	-17.2	28.7	19.9	-8.7
- State Based Crime	384	454	70	18.2	284	237	-47	-16.5	74.0	52.2	-21.8
- Victim Based Crime	4003	4775	772	19.3	973	804	-169	-17.4	24.3	16.8	-7.5
Victim Based Crime	Offences				Outcomes				Solved Rates %		
Crime Type	2014	2015	# diff.	% diff.	2014	2015	# diff.	% diff.	2014	2015	% pt. diff.
Violence Against the Person	1015	1449	434	42.8	444	417	-27	-6.1	43.7	28.8	-15.0
- Homicide	1	2	1	100.0	1	0	-1	-100.0	100.0	0.0	-100.0
- Violence with Injury	470	568	98	20.9	205	200	-5	-2.4	43.6	35.2	-8.4
- Violence without Injury	544	879	335	61.6	238	217	-21	-8.8	43.8	24.7	-19.1
Sexual Offences	95	213	118	124.2	13	32	19	146.2	13.7	15.0	1.3
- Rape	36	44	8	22.2	5	10	5	100.0	13.9	22.7	8.8
- Rape - Under 16 yrs	12	21	9	75.0	5	9	4	80.0	41.7	42.9	1.2
- Rape - Over 16 yrs	24	23	-1	-4.2	0	1	1	-	0.0	4.3	4.3
- Other Sexual Offences	59	169	110	186.4	8	22	14	175.0	13.6	13.0	-0.5
Robbery	21	26	5	23.8	10	6	-4	-40.0	47.6	23.1	-24.5
- Robbery of business property	3	5	2	66.7	4	4	0	0.0	133.3	80.0	-53.3
- Robbery of Personal Property	18	21	3	16.7	6	2	-4	-66.7	33.3	9.5	-23.8
Theft Offences	2167	2277	110	5.1	372	239	-133	-35.8	17.2	10.5	-6.7
- Burglary	597	677	80	13.4	67	38	-29	-43.3	11.2	5.6	-5.6
- Dwelling Burglary	186	266	80	43.0	60	20	-40	-66.7	32.3	7.5	-24.7
- Other Burglary	411	411	0	0.0	7	18	11	157.1	1.7	4.4	2.7
- Vehicle Offences (incl. Interference)	420	444	24	5.7	17	16	-1	-5.9	4.0	3.6	-0.4
- Theft from Vehicle	306	324	18	5.9	6	8	2	33.3	2.0	2.5	0.5
- Theft of Motor Vehicle	80	77	-3	-3.8	11	8	-3	-27.3	13.8	10.4	-3.4
- Vehicle Interference	34	43	9	26.5	0	0	0	-	0.0	0.0	0.0
- Theft	1150	1156	6	0.5	288	185	-103	-35.8	25.0	16.0	-9.0
- Theft from the Person	53	76	23	43.4	1	1	0	0.0	1.9	1.3	-0.6
- Theft of Pedal Cycle	100	141	41	41.0	2	3	1	50.0	2.0	2.1	0.1
- Shoplifting	330	321	-9	-2.7	190	133	-57	-30.0	57.6	41.4	-16.1
- Other Theft	667	618	-49	-7.3	95	48	-47	-49.5	14.2	7.8	-6.5
Criminal Damage inc. Arson	705	810	105	14.9	134	110	-24	-17.9	19.0	13.6	-5.4
- Criminal Damage	681	787	106	15.6	131	107	-24	-18.3	19.2	13.6	-5.6
- Arson	24	23	-1	-4.2	3	3	0	0.0	12.5	13.0	0.5
Racial/Religiously Aggravated Offences	25	20	-5	-20.0	8	5	-3	-37.5	32.0	25.0	-7.0
State Based Crime	Offences				Outcomes				Solved Rates %		
Crime Type	2014	2015	# diff.	% diff.	2014	2015	# diff.	% diff.	2014	2015	% pt. diff.
Drug Offences	165	111	-54	-32.7	159	104	-55	-34.6	96.4	93.7	-2.7
- Trafficking of Drugs	17	18	1	5.9	16	9	-7	-43.8	94.1	50.0	-44.1
- Possession of Drugs	148	93	-55	-37.2	143	95	-48	-33.6	96.6	102.2	5.5
Possession of Weapons	15	26	11	73.3	13	16	3	23.1	86.7	61.5	-25.1
Public Order	161	264	103	64.0	80	99	19	23.8	49.7	37.5	-12.2
Miscellaneous Crimes against Society	43	53	10	23.3	32	18	-14	-43.8	74.4	34.0	-40.5

**Corporate Services: Performance Summary**  
**Essex Police Performance Summary**

**Braintree**

**Rolling 12 Months to December**

Top Level	Offences				Outcomes				Solved Rates %		
Crime Type	2014	2015	# diff.	% diff.	2014	2015	# diff.	% diff.	2014	2015	% pt. diff.
<b>Anti-Social Behaviour (incidents)</b>	3650	3585	-65	-1.8	-	-	-	-	-	-	-
<b>All Crime (excl. Action (NFIB) Fraud)</b>	5796	6705	909	15.7	1610	1453	-157	-9.8	27.8	21.7	-6.1
- State Based Crime	470	604	134	28.5	347	337	-10	-2.9	73.8	55.8	-18.0
- Victim Based Crime	5326	6101	775	14.6	1263	1116	-147	-11.6	23.7	18.3	-5.4
Victim Based Crime	Offences				Outcomes				Solved Rates %		
Crime Type	2014	2015	# diff.	% diff.	2014	2015	# diff.	% diff.	2014	2015	% pt. diff.
<b>Violence Against the Person</b>	1291	1814	523	40.5	584	586	2	0.3	45.2	32.3	-12.9
- Homicide	1	2	1	100.0	1	0	-1	-100.0	100.0	0.0	-100.0
- Violence with Injury	592	725	133	22.5	268	272	4	1.5	45.3	37.5	-7.8
- Violence without Injury	698	1087	389	55.7	315	314	-1	-0.3	45.1	28.9	-16.2
<b>Sexual Offences</b>	121	264	143	118.2	16	42	26	162.5	13.2	15.9	2.7
- Rape	42	61	19	45.2	6	13	7	116.7	14.3	21.3	7.0
- Rape - Under 16 yrs	13	28	15	115.4	5	12	7	140.0	38.5	42.9	4.4
- Rape - Over 16 yrs	29	33	4	13.8	1	1	0	0.0	3.4	3.0	-0.4
- Other Sexual Offences	79	203	124	157.0	10	29	19	190.0	12.7	14.3	1.6
<b>Robbery</b>	24	38	14	58.3	11	8	-3	-27.3	45.8	21.1	-24.8
- Robbery of business property	5	9	4	80.0	4	5	1	25.0	80.0	55.6	-24.4
- Robbery of Personal Property	19	29	10	52.6	7	3	-4	-57.1	36.8	10.3	-26.5
<b>Theft Offences</b>	2968	2947	-21	-0.7	479	341	-138	-28.8	16.1	11.6	-4.6
- Burglary	858	842	-16	-1.9	83	49	-34	-41.0	9.7	5.8	-3.9
- Dwelling Burglary	315	341	26	8.3	72	29	-43	-59.7	22.9	8.5	-14.4
- Other Burglary	543	501	-42	-7.7	11	20	9	81.8	2.0	4.0	2.0
- Vehicle Offences (incl. Interference)	614	587	-27	-4.4	23	20	-3	-13.0	3.7	3.4	-0.3
- Theft from Vehicle	438	427	-11	-2.5	7	10	3	42.9	1.6	2.3	0.7
- Theft of Motor Vehicle	122	102	-20	-16.4	16	9	-7	-43.8	13.1	8.8	-4.3
- Vehicle Interference	54	58	4	7.4	0	1	1	-	0.0	1.7	1.7
- Theft	1496	1518	22	1.5	373	272	-101	-27.1	24.9	17.9	-7.0
- Theft from the Person	76	99	23	30.3	1	4	3	300.0	1.3	4.0	2.7
- Theft of Pedal Cycle	115	173	58	50.4	3	6	3	100.0	2.6	3.5	0.9
- Shoplifting	434	432	-2	-0.5	245	188	-57	-23.3	56.5	43.5	-12.9
- Other Theft	871	814	-57	-6.5	124	74	-50	-40.3	14.2	9.1	-5.1
<b>Criminal Damage inc. Arson</b>	922	1038	116	12.6	173	139	-34	-19.7	18.8	13.4	-5.4
- Criminal Damage	892	1009	117	13.1	169	134	-35	-20.7	18.9	13.3	-5.7
- Arson	30	29	-1	-3.3	4	5	1	25.0	13.3	17.2	3.9
<b>Racial/Religiously Aggravated Offences</b>	30	24	-6	-20.0	10	9	-1	-10.0	33.3	37.5	4.2
State Based Crime	Offences				Outcomes				Solved Rates %		
Crime Type	2014	2015	# diff.	% diff.	2014	2015	# diff.	% diff.	2014	2015	% pt. diff.
<b>Drug Offences</b>	199	168	-31	-15.6	198	159	-39	-19.7	99.5	94.6	-4.9
- Trafficking of Drugs	19	23	4	21.1	18	12	-6	-33.3	94.7	52.2	-42.6
- Possession of Drugs	180	145	-35	-19.4	180	147	-33	-18.3	100.0	101.4	1.4
<b>Possession of Weapons</b>	18	33	15	83.3	16	21	5	31.3	88.9	63.6	-25.3
<b>Public Order</b>	197	324	127	64.5	93	126	33	35.5	47.2	38.9	-8.3
<b>Miscellaneous Crimes against Society</b>	56	79	23	41.1	40	31	-9	-22.5	71.4	39.2	-32.2

**Corporate Services: Performance Summary**  
**Essex Police Performance Summary**

**Uttlesford**  
**Cumulative Year to December**

Top Level	Offences				Outcomes				Solved Rates %		
Crime Type	2014	2015	# diff.	% diff.	2014	2015	# diff.	% diff.	2014	2015	% pt. diff.
Anti-Social Behaviour (incidents)	1099	925	-174	-15.8	-	-	-	-	-	-	-
All Crime (excl. Action (NFIB) Fraud)	2016	1824	-192	-9.5	430	346	-84	-19.5	21.3	19.0	-2.4
- State Based Crime	135	131	-4	-3.0	96	73	-23	-24.0	71.1	55.7	-15.4
- Victim Based Crime	1881	1693	-188	-10.0	334	273	-61	-18.3	17.8	16.1	-1.6
Victim Based Crime	Offences				Outcomes				Solved Rates %		
Crime Type	2014	2015	# diff.	% diff.	2014	2015	# diff.	% diff.	2014	2015	% pt. diff.
Violence Against the Person	368	441	73	19.8	133	144	11	8.3	36.1	32.7	-3.5
- Homicide	0	3	3	-	0	1	1	-	-	33.3	-
- Violence with Injury	176	186	10	5.7	72	77	5	6.9	40.9	41.4	0.5
- Violence without Injury	192	252	60	31.3	61	66	5	8.2	31.8	26.2	-5.6
Sexual Offences	50	45	-5	-10.0	13	9	-4	-30.8	26.0	20.0	-6.0
- Rape	19	23	4	21.1	5	2	-3	-60.0	26.3	8.7	-17.6
- Rape - Under 16 yrs	7	13	6	85.7	3	0	-3	-100.0	42.9	0.0	-42.9
- Rape - Over 16 yrs	12	10	-2	-16.7	2	2	0	0.0	16.7	20.0	3.3
- Other Sexual Offences	31	22	-9	-29.0	8	7	-1	-12.5	25.8	31.8	6.0
Robbery	5	7	2	40.0	0	3	3	-	0.0	42.9	42.9
- Robbery of business property	1	1	0	0.0	0	0	0	-	0.0	0.0	0.0
- Robbery of Personal Property	4	6	2	50.0	0	3	3	-	0.0	50.0	50.0
Theft Offences	1127	933	-194	-17.2	140	93	-47	-33.6	12.4	10.0	-2.5
- Burglary	395	312	-83	-21.0	38	24	-14	-36.8	9.6	7.7	-1.9
- Dwelling Burglary	93	116	23	24.7	31	11	-20	-64.5	33.3	9.5	-23.9
- Other Burglary	302	196	-106	-35.1	7	13	6	85.7	2.3	6.6	4.3
- Vehicle Offences (incl. Interference)	260	232	-28	-10.8	8	15	7	87.5	3.1	6.5	3.4
- Theft from Vehicle	179	166	-13	-7.3	0	8	8	-	0.0	4.8	4.8
- Theft of Motor Vehicle	50	38	-12	-24.0	8	7	-1	-12.5	16.0	18.4	2.4
- Vehicle Interference	31	28	-3	-9.7	0	0	0	-	0.0	0.0	0.0
- Theft	472	389	-83	-17.6	94	54	-40	-42.6	19.9	13.9	-6.0
- Theft from the Person	8	18	10	125.0	1	1	0	0.0	12.5	5.6	-6.9
- Theft of Pedal Cycle	19	16	-3	-15.8	0	1	1	-	0.0	6.3	6.3
- Shoplifting	88	61	-27	-30.7	52	21	-31	-59.6	59.1	34.4	-24.7
- Other Theft	357	294	-63	-17.6	41	31	-10	-24.4	11.5	10.5	-0.9
Criminal Damage inc. Arson	331	267	-64	-19.3	48	24	-24	-50.0	14.5	9.0	-5.5
- Criminal Damage	321	254	-67	-20.9	46	23	-23	-50.0	14.3	9.1	-5.3
- Arson	10	13	3	30.0	2	1	-1	-50.0	20.0	7.7	-12.3
Racial/Religiously Aggravated Offences	5	6	1	20.0	3	2	-1	-33.3	60.0	33.3	-26.7
State Based Crime	Offences				Outcomes				Solved Rates %		
Crime Type	2014	2015	# diff.	% diff.	2014	2015	# diff.	% diff.	2014	2015	% pt. diff.
Drug Offences	48	39	-9	-18.8	45	38	-7	-15.6	93.8	97.4	3.7
- Trafficking of Drugs	9	6	-3	-33.3	5	4	-1	-20.0	55.6	66.7	11.1
- Possession of Drugs	39	33	-6	-15.4	40	34	-6	-15.0	102.6	103.0	0.5
Possession of Weapons	12	8	-4	-33.3	7	7	0	0.0	58.3	87.5	29.2
Public Order	42	66	24	57.1	31	20	-11	-35.5	73.8	30.3	-43.5
Miscellaneous Crimes against Society	33	18	-15	-45.5	13	8	-5	-38.5	39.4	44.4	5.1

**Corporate Services: Performance Summary**  
**Essex Police Performance Summary**

## Uttlesford

### Rolling 12 Months to December

Top Level	Offences				Outcomes				Solved Rates %		
Crime Type	2014	2015	# diff.	% diff.	2014	2015	# diff.	% diff.	2014	2015	% pt. diff.
<b>Anti-Social Behaviour (incidents)</b>	1329	1197	-132	-9.9	-	-	-	-	-	-	-
<b>All Crime (excl. Action (NFIB) Fraud)</b>	2620	2422	-198	-7.6	557	472	-85	-15.3	21.3	19.5	-1.8
- State Based Crime	163	170	7	4.3	112	94	-18	-16.1	68.7	55.3	-13.4
- Victim Based Crime	2457	2252	-205	-8.3	445	378	-67	-15.1	18.1	16.8	-1.3
Victim Based Crime	Offences				Outcomes				Solved Rates %		
Crime Type	2014	2015	# diff.	% diff.	2014	2015	# diff.	% diff.	2014	2015	% pt. diff.
<b>Violence Against the Person</b>	448	556	108	24.1	174	198	24	13.8	38.8	35.6	-3.2
- Homicide	0	3	3	-	0	1	1	-	-	33.3	-
- Violence with Injury	211	234	23	10.9	94	103	9	9.6	44.5	44.0	-0.5
- Violence without Injury	237	319	82	34.6	80	94	14	17.5	33.8	29.5	-4.3
<b>Sexual Offences</b>	59	62	3	5.1	17	14	-3	-17.6	28.8	22.6	-6.2
- Rape	22	27	5	22.7	5	4	-1	-20.0	22.7	14.8	-7.9
- Rape - Under 16 yrs	9	16	7	77.8	3	1	-2	-66.7	33.3	6.3	-27.1
- Rape - Over 16 yrs	13	11	-2	-15.4	2	3	1	50.0	15.4	27.3	11.9
- Other Sexual Offences	37	35	-2	-5.4	12	10	-2	-16.7	32.4	28.6	-3.9
<b>Robbery</b>	5	9	4	80.0	3	3	0	0.0	60.0	33.3	-26.7
- Robbery of business property	1	1	0	0.0	2	0	-2	-100.0	200.0	0.0	-200.0
- Robbery of Personal Property	4	8	4	100.0	1	3	2	200.0	25.0	37.5	12.5
<b>Theft Offences</b>	1528	1278	-250	-16.4	188	127	-61	-32.4	12.3	9.9	-2.4
- Burglary	547	447	-100	-18.3	53	37	-16	-30.2	9.7	8.3	-1.4
- Dwelling Burglary	150	151	1	0.7	45	21	-24	-53.3	30.0	13.9	-16.1
- Other Burglary	397	296	-101	-25.4	8	16	8	100.0	2.0	5.4	3.4
- Vehicle Offences (incl. Interference)	361	326	-35	-9.7	11	19	8	72.7	3.0	5.8	2.8
- Theft from Vehicle	262	238	-24	-9.2	0	8	8	-	0.0	3.4	3.4
- Theft of Motor Vehicle	64	52	-12	-18.8	11	11	0	0.0	17.2	21.2	4.0
- Vehicle Interference	35	36	1	2.9	0	0	0	-	0.0	0.0	0.0
- Theft	620	505	-115	-18.5	124	71	-53	-42.7	20.0	14.1	-5.9
- Theft from the Person	10	22	12	120.0	1	1	0	0.0	10.0	4.5	-5.5
- Theft of Pedal Cycle	23	21	-2	-8.7	0	1	1	-	0.0	4.8	4.8
- Shoplifting	123	93	-30	-24.4	63	27	-36	-57.1	51.2	29.0	-22.2
- Other Theft	464	369	-95	-20.5	60	42	-18	-30.0	12.9	11.4	-1.5
<b>Criminal Damage inc. Arson</b>	417	347	-70	-16.8	63	36	-27	-42.9	15.1	10.4	-4.7
- Criminal Damage	406	332	-74	-18.2	61	35	-26	-42.6	15.0	10.5	-4.5
- Arson	11	15	4	36.4	2	1	-1	-50.0	18.2	6.7	-11.5
<b>Racial/Religiously Aggravated Offences</b>	8	11	3	37.5	4	2	-2	-50.0	50.0	18.2	-31.8
State Based Crime	Offences				Outcomes				Solved Rates %		
Crime Type	2014	2015	# diff.	% diff.	2014	2015	# diff.	% diff.	2014	2015	% pt. diff.
<b>Drug Offences</b>	59	52	-7	-11.9	53	52	-1	-1.9	89.8	100.0	10.2
- Trafficking of Drugs	9	8	-1	-11.1	5	6	1	20.0	55.6	75.0	19.4
- Possession of Drugs	50	44	-6	-12.0	48	46	-2	-4.2	96.0	104.5	8.5
<b>Possession of Weapons</b>	12	10	-2	-16.7	7	8	1	14.3	58.3	80.0	21.7
<b>Public Order</b>	55	83	28	50.9	38	23	-15	-39.5	69.1	27.7	-41.4
<b>Miscellaneous Crimes against Society</b>	37	25	-12	-32.4	14	11	-3	-21.4	37.8	44.0	6.2



## Corporate Services: Performance Summary

## Essex Police Performance Summary

## Maldon

## Cumulative Year to December

Top Level	Offences				Outcomes				Solved Rates %		
Crime Type	2014	2015	# diff.	% diff.	2014	2015	# diff.	% diff.	2014	2015	% pt. diff.
Anti-Social Behaviour (incidents)	902	864	-38	-4.2	-	-	-	-	-	-	-
All Crime (excl. Action (NFIB) Fraud)	1761	1760	-1	-0.1	404	294	-110	-27.2	22.9	16.7	-6.2
- State Based Crime	139	151	12	8.6	98	85	-13	-13.3	70.5	56.3	-14.2
- Victim Based Crime	1622	1609	-13	-0.8	306	209	-97	-31.7	18.9	13.0	-5.9
<b>Victim Based Crime</b>	<b>Offences</b>				<b>Outcomes</b>				<b>Solved Rates %</b>		
Crime Type	2014	2015	# diff.	% diff.	2014	2015	# diff.	% diff.	2014	2015	% pt. diff.
Violence Against the Person	405	515	110	27.2	154	139	-15	-9.7	38.0	27.0	-11.0
- Homicide	0	1	1	-	0	1	1	-	-	100.0	-
- Violence with Injury	175	222	47	26.9	73	72	-1	-1.4	41.7	32.4	-9.3
- Violence without Injury	230	292	62	27.0	81	66	-15	-18.5	35.2	22.6	-12.6
Sexual Offences	34	60	26	76.5	11	5	-6	-54.5	32.4	8.3	-24.0
- Rape	15	34	19	126.7	5	0	-5	-100.0	33.3	0.0	-33.3
- Rape - Under 16 yrs	9	23	14	155.6	2	0	-2	-100.0	22.2	0.0	-22.2
- Rape - Over 16 yrs	6	11	5	83.3	3	0	-3	-100.0	50.0	0.0	-50.0
- Other Sexual Offences	19	26	7	36.8	6	5	-1	-16.7	31.6	19.2	-12.3
Robbery	13	8	-5	-38.5	8	2	-6	-75.0	61.5	25.0	-36.5
- Robbery of business property	1	2	1	100.0	0	0	0	-	0.0	0.0	0.0
- Robbery of Personal Property	12	6	-6	-50.0	8	2	-6	-75.0	66.7	33.3	-33.3
Theft Offences	917	769	-148	-16.1	99	43	-56	-56.6	10.8	5.6	-5.2
- Burglary	219	257	38	17.4	21	3	-18	-85.7	9.6	1.2	-8.4
- Dwelling Burglary	50	91	41	82.0	18	3	-15	-83.3	36.0	3.3	-32.7
- Other Burglary	169	166	-3	-1.8	3	0	-3	-100.0	1.8	0.0	-1.8
- Vehicle Offences (incl. Interference)	288	196	-92	-31.9	12	7	-5	-41.7	4.2	3.6	-0.6
- Theft from Vehicle	190	135	-55	-28.9	8	3	-5	-62.5	4.2	2.2	-2.0
- Theft of Motor Vehicle	71	40	-31	-43.7	4	4	0	0.0	5.6	10.0	4.4
- Vehicle Interference	27	21	-6	-22.2	0	0	0	-	0.0	0.0	0.0
- Theft	410	316	-94	-22.9	66	33	-33	-50.0	16.1	10.4	-5.7
- Theft from the Person	28	28	0	0.0	1	0	-1	-100.0	3.6	0.0	-3.6
- Theft of Pedal Cycle	26	12	-14	-53.8	0	0	0	-	0.0	0.0	0.0
- Shoplifting	90	48	-42	-46.7	47	15	-32	-68.1	52.2	31.3	-21.0
- Other Theft	266	228	-38	-14.3	18	18	0	0.0	6.8	7.9	1.1
Criminal Damage inc. Arson	253	257	4	1.6	34	20	-14	-41.2	13.4	7.8	-5.7
- Criminal Damage	248	248	0	0.0	31	17	-14	-45.2	12.5	6.9	-5.6
- Arson	5	9	4	80.0	3	3	0	0.0	60.0	33.3	-26.7
Racial/Religiously Aggravated Offences	6	5	-1	-16.7	2	1	-1	-50.0	33.3	20.0	-13.3
<b>State Based Crime</b>	<b>Offences</b>				<b>Outcomes</b>				<b>Solved Rates %</b>		
Crime Type	2014	2015	# diff.	% diff.	2014	2015	# diff.	% diff.	2014	2015	% pt. diff.
Drug Offences	55	46	-9	-16.4	47	44	-3	-6.4	85.5	95.7	10.2
- Trafficking of Drugs	15	11	-4	-26.7	10	9	-1	-10.0	66.7	81.8	15.2
- Possession of Drugs	40	35	-5	-12.5	37	35	-2	-5.4	92.5	100.0	7.5
Possession of Weapons	9	9	0	0.0	9	6	-3	-33.3	100.0	66.7	-33.3
Public Order	61	82	21	34.4	34	28	-6	-17.6	55.7	34.1	-21.6
Miscellaneous Crimes against Society	14	14	0	0.0	8	7	-1	-12.5	57.1	50.0	-7.1

**Corporate Services: Performance Summary**  
**Essex Police Performance Summary**

## Maldon

### Rolling 12 Months to December

Top Level	Offences				Outcomes				Solved Rates %		
Crime Type	2014	2015	# diff.	% diff.	2014	2015	# diff.	% diff.	2014	2015	% pt. diff.
<b>Anti-Social Behaviour (incidents)</b>	1123	1104	-19	-1.7	-	-	-	-	-	-	-
<b>All Crime (excl. Action (NFIB) Fraud)</b>	2285	2304	19	0.8	517	402	-115	-22.2	22.6	17.4	-5.2
- State Based Crime	174	194	20	11.5	122	110	-12	-9.8	70.1	56.7	-13.4
- Victim Based Crime	2111	2110	-1	0.0	395	292	-103	-26.1	18.7	13.8	-4.9
Victim Based Crime	Offences				Outcomes				Solved Rates %		
Crime Type	2014	2015	# diff.	% diff.	2014	2015	# diff.	% diff.	2014	2015	% pt. diff.
<b>Violence Against the Person</b>	499	651	152	30.5	188	184	-4	-2.1	37.7	28.3	-9.4
- Homicide	0	1	1	-	0	1	1	-	-	100.0	-
- Violence with Injury	210	287	77	36.7	85	96	11	12.9	40.5	33.4	-7.0
- Violence without Injury	289	363	74	25.6	103	87	-16	-15.5	35.6	24.0	-11.7
<b>Sexual Offences</b>	43	80	37	86.0	11	9	-2	-18.2	25.6	11.3	-14.3
- Rape	18	43	25	138.9	5	0	-5	-100.0	27.8	0.0	-27.8
- Rape - Under 16 yrs	11	25	14	127.3	2	0	-2	-100.0	18.2	0.0	-18.2
- Rape - Over 16 yrs	7	18	11	157.1	3	0	-3	-100.0	42.9	0.0	-42.9
- Other Sexual Offences	25	37	12	48.0	6	9	3	50.0	24.0	24.3	0.3
<b>Robbery</b>	15	10	-5	-33.3	8	3	-5	-62.5	53.3	30.0	-23.3
- Robbery of business property	3	2	-1	-33.3	0	0	0	-	0.0	0.0	0.0
- Robbery of Personal Property	12	8	-4	-33.3	8	3	-5	-62.5	66.7	37.5	-29.2
<b>Theft Offences</b>	1218	1045	-173	-14.2	142	64	-78	-54.9	11.7	6.1	-5.5
- Burglary	301	356	55	18.3	25	4	-21	-84.0	8.3	1.1	-7.2
- Dwelling Burglary	81	107	26	32.1	20	3	-17	-85.0	24.7	2.8	-21.9
- Other Burglary	220	249	29	13.2	5	1	-4	-80.0	2.3	0.4	-1.9
- Vehicle Offences (incl. Interference)	376	276	-100	-26.6	18	11	-7	-38.9	4.8	4.0	-0.8
- Theft from Vehicle	243	184	-59	-24.3	13	5	-8	-61.5	5.3	2.7	-2.6
- Theft of Motor Vehicle	103	60	-43	-41.7	5	6	1	20.0	4.9	10.0	5.1
- Vehicle Interference	30	32	2	6.7	0	0	0	-	0.0	0.0	0.0
- Theft	541	413	-128	-23.7	99	49	-50	-50.5	18.3	11.9	-6.4
- Theft from the Person	33	34	1	3.0	1	0	-1	-100.0	3.0	0.0	-3.0
- Theft of Pedal Cycle	32	17	-15	-46.9	0	0	0	-	0.0	0.0	0.0
- Shoplifting	115	69	-46	-40.0	66	24	-42	-63.6	57.4	34.8	-22.6
- Other Theft	361	293	-68	-18.8	32	25	-7	-21.9	8.9	8.5	-0.3
<b>Criminal Damage inc. Arson</b>	336	324	-12	-3.6	46	32	-14	-30.4	13.7	9.9	-3.8
- Criminal Damage	327	311	-16	-4.9	43	28	-15	-34.9	13.1	9.0	-4.1
- Arson	9	13	4	44.4	3	4	1	33.3	33.3	30.8	-2.6
<b>Racial/Religiously Aggravated Offences</b>	9	8	-1	-11.1	3	3	0	0.0	33.3	37.5	4.2
State Based Crime	Offences				Outcomes				Solved Rates %		
Crime Type	2014	2015	# diff.	% diff.	2014	2015	# diff.	% diff.	2014	2015	% pt. diff.
<b>Drug Offences</b>	66	58	-8	-12.1	58	58	0	0.0	87.9	100.0	12.1
- Trafficking of Drugs	16	14	-2	-12.5	11	12	1	9.1	68.8	85.7	17.0
- Possession of Drugs	50	44	-6	-12.0	47	46	-1	-2.1	94.0	104.5	10.5
<b>Possession of Weapons</b>	12	11	-1	-8.3	11	7	-4	-36.4	91.7	63.6	-28.0
<b>Public Order</b>	75	99	24	32.0	41	36	-5	-12.2	54.7	36.4	-18.3
<b>Miscellaneous Crimes against Society</b>	21	26	5	23.8	12	9	-3	-25.0	57.1	34.6	-22.5

**Corporate Services: Performance Summary**  
**Essex Police Performance Summary**

**Colchester**  
**Cumulative Year to December**

Top Level	Offences				Outcomes				Solved Rates %		
Crime Type	2014	2015	# diff.	% diff.	2014	2015	# diff.	% diff.	2014	2015	% pt. diff.
Anti-Social Behaviour (incidents)	4699	4412	-287	-6.1	-	-	-	-	-	-	-
All Crime (excl. Action (NFIB) Fraud)	8182	9124	942	11.5	2276	2124	-152	-6.7	27.8	23.3	-4.5
- State Based Crime	726	928	202	27.8	507	485	-22	-4.3	69.8	52.3	-17.6
- Victim Based Crime	7456	8196	740	9.9	1769	1639	-130	-7.3	23.7	20.0	-3.7
Victim Based Crime	Offences				Outcomes				Solved Rates %		
Crime Type	2014	2015	# diff.	% diff.	2014	2015	# diff.	% diff.	2014	2015	% pt. diff.
Violence Against the Person	2083	2686	603	28.9	747	665	-82	-11.0	35.9	24.8	-11.1
- Homicide	2	0	-2	-100.0	1	2	1	100.0	50.0	-	-
- Violence with Injury	1001	1059	58	5.8	398	303	-95	-23.9	39.8	28.6	-11.1
- Violence without Injury	1080	1627	547	50.6	348	360	12	3.4	32.2	22.1	-10.1
Sexual Offences	211	263	52	24.6	29	48	19	65.5	13.7	18.3	4.5
- Rape	86	108	22	25.6	6	9	3	50.0	7.0	8.3	1.4
- Rape - Under 16 yrs	26	29	3	11.5	1	3	2	200.0	3.8	10.3	6.5
- Rape - Over 16 yrs	60	79	19	31.7	5	6	1	20.0	8.3	7.6	-0.7
- Other Sexual Offences	125	155	30	24.0	23	39	16	69.6	18.4	25.2	6.8
Robbery	54	69	15	27.8	21	16	-5	-23.8	38.9	23.2	-15.7
- Robbery of business property	4	3	-1	-25.0	2	3	1	50.0	50.0	100.0	50.0
- Robbery of Personal Property	50	66	16	32.0	19	13	-6	-31.6	38.0	19.7	-18.3
Theft Offences	3832	3959	127	3.3	759	710	-49	-6.5	19.8	17.9	-1.9
- Burglary	926	963	37	4.0	85	90	5	5.9	9.2	9.3	0.2
- Dwelling Burglary	398	480	82	20.6	46	76	30	65.2	11.6	15.8	4.3
- Other Burglary	528	483	-45	-8.5	39	14	-25	-64.1	7.4	2.9	-4.5
- Vehicle Offences (incl. Interference)	594	601	7	1.2	44	16	-28	-63.6	7.4	2.7	-4.7
- Theft from Vehicle	372	381	9	2.4	18	3	-15	-83.3	4.8	0.8	-4.1
- Theft of Motor Vehicle	151	154	3	2.0	23	13	-10	-43.5	15.2	8.4	-6.8
- Vehicle Interference	71	66	-5	-7.0	3	0	-3	-100.0	4.2	0.0	-4.2
- Theft	2312	2395	83	3.6	630	604	-26	-4.1	27.2	25.2	-2.0
- Theft from the Person	101	154	53	52.5	2	10	8	400.0	2.0	6.5	4.5
- Theft of Pedal Cycle	319	298	-21	-6.6	15	26	11	73.3	4.7	8.7	4.0
- Shoplifting	848	955	107	12.6	505	468	-37	-7.3	59.6	49.0	-10.5
- Other Theft	1044	988	-56	-5.4	108	100	-8	-7.4	10.3	10.1	-0.2
Criminal Damage inc. Arson	1276	1219	-57	-4.5	213	200	-13	-6.1	16.7	16.4	-0.3
- Criminal Damage	1256	1187	-69	-5.5	211	196	-15	-7.1	16.8	16.5	-0.3
- Arson	20	32	12	60.0	2	4	2	100.0	10.0	12.5	2.5
Racial/Religiously Aggravated Offences	79	64	-15	-19.0	33	23	-10	-30.3	41.8	35.9	-5.8
State Based Crime	Offences				Outcomes				Solved Rates %		
Crime Type	2014	2015	# diff.	% diff.	2014	2015	# diff.	% diff.	2014	2015	% pt. diff.
Drug Offences	290	250	-40	-13.8	275	221	-54	-19.6	94.8	88.4	-6.4
- Trafficking of Drugs	33	85	52	157.6	29	58	29	100.0	87.9	68.2	-19.6
- Possession of Drugs	257	165	-92	-35.8	246	163	-83	-33.7	95.7	98.8	3.1
Possession of Weapons	38	47	9	23.7	26	30	4	15.4	68.4	63.8	-4.6
Public Order	314	505	191	60.8	154	175	21	13.6	49.0	34.7	-14.4
Miscellaneous Crimes against Society	84	126	42	50.0	52	59	7	13.5	61.9	46.8	-15.1

**Corporate Services: Performance Summary**  
**Essex Police Performance Summary**

**Colchester**

**Rolling 12 Months to December**

Top Level	Offences				Outcomes				Solved Rates %		
Crime Type	2014	2015	# diff.	% diff.	2014	2015	# diff.	% diff.	2014	2015	% pt. diff.
<b>Anti-Social Behaviour (incidents)</b>	5767	5689	-78	-1.4	-	-	-	-	-	-	-
<b>All Crime (excl. Action (NFIB) Fraud)</b>	10877	11887	1010	9.3	3020	2878	-142	-4.7	27.8	24.2	-3.6
- State Based Crime	962	1151	189	19.6	680	633	-47	-6.9	70.7	55.0	-15.7
- Victim Based Crime	9915	10736	821	8.3	2340	2245	-95	-4.1	23.6	20.9	-2.7
Victim Based Crime	Offences				Outcomes				Solved Rates %		
Crime Type	2014	2015	# diff.	% diff.	2014	2015	# diff.	% diff.	2014	2015	% pt. diff.
<b>Violence Against the Person</b>	2734	3412	678	24.8	970	911	-59	-6.1	35.5	26.7	-8.8
- Homicide	3	0	-3	-100.0	1	2	1	100.0	33.3	-	-
- Violence with Injury	1301	1350	49	3.8	507	419	-88	-17.4	39.0	31.0	-7.9
- Violence without Injury	1430	2062	632	44.2	462	490	28	6.1	32.3	23.8	-8.5
<b>Sexual Offences</b>	268	361	93	34.7	46	61	15	32.6	17.2	16.9	-0.3
- Rape	109	138	29	26.6	12	11	-1	-8.3	11.0	8.0	-3.0
- Rape - Under 16 yrs	31	36	5	16.1	5	4	-1	-20.0	16.1	11.1	-5.0
- Rape - Over 16 yrs	78	102	24	30.8	7	7	0	0.0	9.0	6.9	-2.1
- Other Sexual Offences	159	223	64	40.3	34	50	16	47.1	21.4	22.4	1.0
<b>Robbery</b>	77	92	15	19.5	26	21	-5	-19.2	33.8	22.8	-10.9
- Robbery of business property	8	3	-5	-62.5	3	3	0	0.0	37.5	100.0	62.5
- Robbery of Personal Property	69	89	20	29.0	23	18	-5	-21.7	33.3	20.2	-13.1
<b>Theft Offences</b>	5103	5270	167	3.3	1022	985	-37	-3.6	20.0	18.7	-1.3
- Burglary	1226	1365	139	11.3	113	123	10	8.8	9.2	9.0	-0.2
- Dwelling Burglary	534	717	183	34.3	54	103	49	90.7	10.1	14.4	4.3
- Other Burglary	692	648	-44	-6.4	59	20	-39	-66.1	8.5	3.1	-5.4
- Vehicle Offences (incl. Interference)	816	823	7	0.9	49	30	-19	-38.8	6.0	3.6	-2.4
- Theft from Vehicle	530	503	-27	-5.1	19	4	-15	-78.9	3.6	0.8	-2.8
- Theft of Motor Vehicle	205	226	21	10.2	27	26	-1	-3.7	13.2	11.5	-1.7
- Vehicle Interference	81	94	13	16.0	3	0	-3	-100.0	3.7	0.0	-3.7
- Theft	3061	3082	21	0.7	860	832	-28	-3.3	28.1	27.0	-1.1
- Theft from the Person	151	187	36	23.8	2	10	8	400.0	1.3	5.3	4.0
- Theft of Pedal Cycle	410	348	-62	-15.1	23	26	3	13.0	5.6	7.5	1.9
- Shoplifting	1109	1229	120	10.8	684	654	-30	-4.4	61.7	53.2	-8.5
- Other Theft	1391	1318	-73	-5.2	151	142	-9	-6.0	10.9	10.8	-0.1
<b>Criminal Damage inc. Arson</b>	1733	1601	-132	-7.6	276	267	-9	-3.3	15.9	16.7	0.8
- Criminal Damage	1706	1552	-154	-9.0	274	260	-14	-5.1	16.1	16.8	0.7
- Arson	27	49	22	81.5	2	7	5	250.0	7.4	14.3	6.9
<b>Racial/Religiously Aggravated Offences</b>	106	84	-22	-20.8	40	33	-7	-17.5	37.7	39.3	1.5
State Based Crime	Offences				Outcomes				Solved Rates %		
Crime Type	2014	2015	# diff.	% diff.	2014	2015	# diff.	% diff.	2014	2015	% pt. diff.
<b>Drug Offences</b>	364	322	-42	-11.5	351	297	-54	-15.4	96.4	92.2	-4.2
- Trafficking of Drugs	39	95	56	143.6	36	67	31	86.1	92.3	70.5	-21.8
- Possession of Drugs	325	227	-98	-30.2	315	230	-85	-27.0	96.9	101.3	4.4
<b>Possession of Weapons</b>	55	57	2	3.6	42	37	-5	-11.9	76.4	64.9	-11.5
<b>Public Order</b>	425	614	189	44.5	215	223	8	3.7	50.6	36.3	-14.3
<b>Miscellaneous Crimes against Society</b>	118	158	40	33.9	72	76	4	5.6	61.0	48.1	-12.9

## Corporate Services: Performance Summary

## Essex Police Performance Summary

## Trending

## Cumulative Year to December

Top Level	Offences				Outcomes				Solved Rates %		
Crime Type	2014	2015	# diff.	% diff.	2014	2015	# diff.	% diff.	2014	2015	% pt. diff.
Anti-Social Behaviour (incidents)	3860	3754	-106	-2.7	-	-	-	-	-	-	-
All Crime (excl. Action (NFIB) Fraud)	7199	7354	155	2.2	2017	1844	-173	-8.6	28.0	25.1	-2.9
- State Based Crime	678	717	39	5.8	442	358	-84	-19.0	65.2	49.9	-15.3
- Victim Based Crime	6521	6637	116	1.8	1575	1486	-89	-5.7	24.2	22.4	-1.8
Victim Based Crime	Offences				Outcomes				Solved Rates %		
Crime Type	2014	2015	# diff.	% diff.	2014	2015	# diff.	% diff.	2014	2015	% pt. diff.
Violence Against the Person	1985	2334	349	17.6	717	669	-48	-6.7	36.1	28.7	-7.5
- Homicide	1	4	3	300.0	0	3	3	-	0.0	75.0	75.0
- Violence with Injury	899	938	39	4.3	323	291	-32	-9.9	35.9	31.0	-4.9
- Violence without Injury	1085	1392	307	28.3	394	375	-19	-4.8	36.3	26.9	-9.4
Sexual Offences	196	201	5	2.6	28	34	6	21.4	14.3	16.9	2.6
- Rape	59	62	3	5.1	6	9	3	50.0	10.2	14.5	4.3
- Rape - Under 16 yrs	14	20	6	42.9	5	3	-2	-40.0	35.7	15.0	-20.7
- Rape - Over 16 yrs	45	42	-3	-6.7	1	6	5	500.0	2.2	14.3	12.1
- Other Sexual Offences	137	139	2	1.5	22	25	3	13.6	16.1	18.0	1.9
Robbery	73	58	-15	-20.5	11	10	-1	-9.1	15.1	17.2	2.2
- Robbery of business property	3	6	3	100.0	0	3	3	-	0.0	50.0	50.0
- Robbery of Personal Property	70	52	-18	-25.7	11	7	-4	-36.4	15.7	13.5	-2.3
Theft Offences	3217	3054	-163	-5.1	645	603	-42	-6.5	20.0	19.7	-0.3
- Burglary	880	884	4	0.5	65	105	40	61.5	7.4	11.9	4.5
- Dwelling Burglary	346	388	42	12.1	36	71	35	97.2	10.4	18.3	7.9
- Other Burglary	534	496	-38	-7.1	29	34	5	17.2	5.4	6.9	1.4
- Vehicle Offences (incl. Interference)	524	519	-5	-1.0	36	29	-7	-19.4	6.9	5.6	-1.3
- Theft from Vehicle	351	371	20	5.7	10	6	-4	-40.0	2.8	1.6	-1.2
- Theft of Motor Vehicle	130	102	-28	-21.5	25	18	-7	-28.0	19.2	17.6	-1.6
- Vehicle Interference	43	46	3	7.0	1	5	4	400.0	2.3	10.9	8.5
- Theft	1813	1651	-162	-8.9	544	469	-75	-13.8	30.0	28.4	-1.6
- Theft from the Person	69	105	36	52.2	2	3	1	50.0	2.9	2.9	0.0
- Theft of Pedal Cycle	142	99	-43	-30.3	5	8	3	60.0	3.5	8.1	4.6
- Shoplifting	769	714	-55	-7.2	452	391	-61	-13.5	58.8	54.8	-4.0
- Other Theft	833	733	-100	-12.0	85	67	-18	-21.2	10.2	9.1	-1.1
Criminal Damage inc. Arson	1050	990	-60	-5.7	174	170	-4	-2.3	16.6	17.2	0.6
- Criminal Damage	997	955	-42	-4.2	171	168	-3	-1.8	17.2	17.6	0.4
- Arson	53	35	-18	-34.0	3	2	-1	-33.3	5.7	5.7	0.1
Racial/Religiously Aggravated Offences	43	24	-19	-44.2	19	9	-10	-52.6	44.2	37.5	-6.7
State Based Crime	Offences				Outcomes				Solved Rates %		
Crime Type	2014	2015	# diff.	% diff.	2014	2015	# diff.	% diff.	2014	2015	% pt. diff.
Drug Offences	245	163	-82	-33.5	226	148	-78	-34.5	92.2	90.8	-1.4
- Trafficking of Drugs	37	44	7	18.9	33	37	4	12.1	89.2	84.1	-5.1
- Possession of Drugs	208	119	-89	-42.8	193	111	-82	-42.5	92.8	93.3	0.5
Possession of Weapons	50	50	0	0.0	41	37	-4	-9.8	82.0	74.0	-8.0
Public Order	291	363	72	24.7	137	127	-10	-7.3	47.1	35.0	-12.1
Miscellaneous Crimes against Society	92	141	49	53.3	38	46	8	21.1	41.3	32.6	-8.7

**Corporate Services: Performance Summary**  
**Essex Police Performance Summary**

**Trending**  
**Rolling 12 Months to December**

Top Level	Offences				Outcomes				Solved Rates %		
Crime Type	2014	2015	# diff.	% diff.	2014	2015	# diff.	% diff.	2014	2015	% pt. diff.
<b>Anti-Social Behaviour (incidents)</b>	4790	4761	-29	-0.6	-	-	-	-	-	-	-
<b>All Crime (excl. Action (NFIB) Fraud)</b>	9230	9363	133	1.4	2766	2525	-241	-8.7	30.0	27.0	-3.0
- State Based Crime	845	878	33	3.9	574	467	-107	-18.6	67.9	53.2	-14.7
- Victim Based Crime	8385	8485	100	1.2	2192	2058	-134	-6.1	26.1	24.3	-1.9
<b>Victim Based Crime</b>	<b>Offences</b>				<b>Outcomes</b>				<b>Solved Rates %</b>		
Crime Type	2014	2015	# diff.	% diff.	2014	2015	# diff.	% diff.	2014	2015	% pt. diff.
<b>Violence Against the Person</b>	2525	2903	378	15.0	936	889	-47	-5.0	37.1	30.6	-6.4
- Homicide	1	4	3	300.0	0	3	3	-	0.0	75.0	75.0
- Violence with Injury	1154	1155	1	0.1	440	384	-56	-12.7	38.1	33.2	-4.9
- Violence without Injury	1370	1744	374	27.3	496	502	6	1.2	36.2	28.8	-7.4
<b>Sexual Offences</b>	247	259	12	4.9	52	47	-5	-9.6	21.1	18.1	-2.9
- Rape	79	87	8	10.1	13	13	0	0.0	16.5	14.9	-1.5
- Rape - Under 16 yrs	19	30	11	57.9	10	4	-6	-60.0	52.6	13.3	-39.3
- Rape - Over 16 yrs	60	57	-3	-5.0	3	9	6	200.0	5.0	15.8	10.8
- Other Sexual Offences	168	172	4	2.4	39	34	-5	-12.8	23.2	19.8	-3.4
<b>Robbery</b>	90	75	-15	-16.7	20	14	-6	-30.0	22.2	18.7	-3.6
- Robbery of business property	4	7	3	75.0	0	3	3	-	0.0	42.9	42.9
- Robbery of Personal Property	86	68	-18	-20.9	20	11	-9	-45.0	23.3	16.2	-7.1
<b>Theft Offences</b>	4144	3952	-192	-4.6	942	885	-57	-6.1	22.7	22.4	-0.3
- Burglary	1156	1117	-39	-3.4	113	180	67	59.3	9.8	16.1	6.3
- Dwelling Burglary	478	484	6	1.3	63	106	43	68.3	13.2	21.9	8.7
- Other Burglary	678	633	-45	-6.6	50	74	24	48.0	7.4	11.7	4.3
- Vehicle Offences (incl. Interference)	653	661	8	1.2	55	42	-13	-23.6	8.4	6.4	-2.1
- Theft from Vehicle	433	461	28	6.5	24	9	-15	-62.5	5.5	2.0	-3.6
- Theft of Motor Vehicle	166	139	-27	-16.3	30	28	-2	-6.7	18.1	20.1	2.1
- Vehicle Interference	54	61	7	13.0	1	5	4	400.0	1.9	8.2	6.3
- Theft	2335	2174	-161	-6.9	774	663	-111	-14.3	33.1	30.5	-2.7
- Theft from the Person	87	112	25	28.7	3	5	2	66.7	3.4	4.5	1.0
- Theft of Pedal Cycle	169	123	-46	-27.2	9	9	0	0.0	5.3	7.3	2.0
- Shoplifting	995	974	-21	-2.1	638	549	-89	-13.9	64.1	56.4	-7.8
- Other Theft	1084	965	-119	-11.0	124	100	-24	-19.4	11.4	10.4	-1.1
<b>Criminal Damage inc. Arson</b>	1379	1296	-83	-6.0	242	223	-19	-7.9	17.5	17.2	-0.3
- Criminal Damage	1314	1246	-68	-5.2	234	219	-15	-6.4	17.8	17.6	-0.2
- Arson	65	50	-15	-23.1	8	4	-4	-50.0	12.3	8.0	-4.3
<b>Racial/Religiously Aggravated Offences</b>	56	41	-15	-26.8	23	14	-9	-39.1	41.1	34.1	-6.9
<b>State Based Crime</b>	<b>Offences</b>				<b>Outcomes</b>				<b>Solved Rates %</b>		
Crime Type	2014	2015	# diff.	% diff.	2014	2015	# diff.	% diff.	2014	2015	% pt. diff.
<b>Drug Offences</b>	300	215	-85	-28.3	284	205	-79	-27.8	94.7	95.3	0.7
- Trafficking of Drugs	43	59	16	37.2	39	49	10	25.6	90.7	83.1	-7.6
- Possession of Drugs	257	156	-101	-39.3	245	156	-89	-36.3	95.3	100.0	4.7
<b>Possession of Weapons</b>	62	60	-2	-3.2	50	42	-8	-16.0	80.6	70.0	-10.6
<b>Public Order</b>	361	441	80	22.2	180	163	-17	-9.4	49.9	37.0	-12.9
<b>Miscellaneous Crimes against Society</b>	122	162	40	32.8	60	57	-3	-5.0	49.2	35.2	-14.0



## Corporate Services: Performance Summary

## Essex Police Performance Summary

## Southend

## Cumulative Year to December

Top Level	Offences				Outcomes				Solved Rates %		
Crime Type	2014	2015	# diff.	% diff.	2014	2015	# diff.	% diff.	2014	2015	% pt. diff.
Anti-Social Behaviour (incidents)	6222	5726	-496	-8.0	-	-	-	-	-	-	-
All Crime (excl. Action (NFIB) Fraud)	9841	10804	963	9.8	2875	2272	-603	-21.0	29.2	21.0	-8.2
- State Based Crime	1184	1129	-55	-4.6	869	532	-337	-38.8	73.4	47.1	-26.3
- Victim Based Crime	8657	9675	1018	11.8	2006	1740	-266	-13.3	23.2	18.0	-5.2
Victim Based Crime	Offences				Outcomes				Solved Rates %		
Crime Type	2014	2015	# diff.	% diff.	2014	2015	# diff.	% diff.	2014	2015	% pt. diff.
Violence Against the Person	2431	3016	585	24.1	885	778	-107	-12.1	36.4	25.8	-10.6
- Homicide	2	3	1	50.0	2	2	0	0.0	100.0	66.7	-33.3
- Violence with Injury	1129	1212	83	7.4	424	353	-71	-16.7	37.6	29.1	-8.4
- Violence without Injury	1300	1801	501	38.5	459	423	-36	-7.8	35.3	23.5	-11.8
Sexual Offences	241	252	11	4.6	42	38	-4	-9.5	17.4	15.1	-2.3
- Rape	100	94	-6	-6.0	18	10	-8	-44.4	18.0	10.6	-7.4
- Rape - Under 16 yrs	26	25	-1	-3.8	7	5	-2	-28.6	26.9	20.0	-6.9
- Rape - Over 16 yrs	74	69	-5	-6.8	11	5	-6	-54.5	14.9	7.2	-7.6
- Other Sexual Offences	141	158	17	12.1	24	28	4	16.7	17.0	17.7	0.7
Robbery	113	122	9	8.0	16	21	5	31.3	14.2	17.2	3.1
- Robbery of business property	9	6	-3	-33.3	5	4	-1	-20.0	55.6	66.7	11.1
- Robbery of Personal Property	104	116	12	11.5	11	17	6	54.5	10.6	14.7	4.1
Theft Offences	4554	4857	303	6.7	831	677	-154	-18.5	18.2	13.9	-4.3
- Burglary	978	1106	128	13.1	93	83	-10	-10.8	9.5	7.5	-2.0
- Dwelling Burglary	553	691	138	25.0	72	54	-18	-25.0	13.0	7.8	-5.2
- Other Burglary	425	415	-10	-2.4	21	29	8	38.1	4.9	7.0	2.0
- Vehicle Offences (incl. Interference)	1211	1230	19	1.6	57	60	3	5.3	4.7	4.9	0.2
- Theft from Vehicle	798	843	45	5.6	15	26	11	73.3	1.9	3.1	1.2
- Theft of Motor Vehicle	281	256	-25	-8.9	36	32	-4	-11.1	12.8	12.5	-0.3
- Vehicle Interference	132	131	-1	-0.8	6	2	-4	-66.7	4.5	1.5	-3.0
- Theft	2365	2521	156	6.6	681	534	-147	-21.6	28.8	21.2	-7.6
- Theft from the Person	177	197	20	11.3	4	8	4	100.0	2.3	4.1	1.8
- Theft of Pedal Cycle	283	291	8	2.8	7	3	-4	-57.1	2.5	1.0	-1.4
- Shoplifting	832	893	61	7.3	545	409	-136	-25.0	65.5	45.8	-19.7
- Other Theft	1073	1140	67	6.2	125	114	-11	-8.8	11.6	10.0	-1.6
Criminal Damage inc. Arson	1318	1428	110	8.3	232	226	-6	-2.6	17.6	15.8	-1.8
- Criminal Damage	1262	1398	136	10.8	223	222	-1	-0.4	17.7	15.9	-1.8
- Arson	56	30	-26	-46.4	9	4	-5	-55.6	16.1	13.3	-2.7
Racial/Religiously Aggravated Offences	103	93	-10	-9.7	37	22	-15	-40.5	35.9	23.7	-12.3
State Based Crime	Offences				Outcomes				Solved Rates %		
Crime Type	2014	2015	# diff.	% diff.	2014	2015	# diff.	% diff.	2014	2015	% pt. diff.
Drug Offences	503	250	-253	-50.3	491	216	-275	-56.0	97.6	86.4	-11.2
- Trafficking of Drugs	172	68	-104	-60.5	160	52	-108	-67.5	93.0	76.5	-16.6
- Possession of Drugs	331	182	-149	-45.0	331	164	-167	-50.5	100.0	90.1	-9.9
Possession of Weapons	76	90	14	18.4	62	58	-4	-6.5	81.6	64.4	-17.1
Public Order	467	648	181	38.8	244	200	-44	-18.0	52.2	30.9	-21.4
Miscellaneous Crimes against Society	138	141	3	2.2	72	58	-14	-19.4	52.2	41.1	-11.0

**Corporate Services: Performance Summary**  
**Essex Police Performance Summary**

## Southend

### Rolling 12 Months to December

Top Level	Offences				Outcomes				Solved Rates %		
Crime Type	2014	2015	# diff.	% diff.	2014	2015	# diff.	% diff.	2014	2015	% pt. diff.
<b>Anti-Social Behaviour (incidents)</b>	7699	7438	-261	-3.4	-	-	-	-	-	-	-
<b>All Crime (excl. Action (NFIB) Fraud)</b>	12935	13864	929	7.2	3872	3164	-708	-18.3	29.9	22.8	-7.1
- State Based Crime	1557	1479	-78	-5.0	1146	808	-338	-29.5	73.6	54.6	-19.0
- Victim Based Crime	11378	12385	1007	8.9	2726	2356	-370	-13.6	24.0	19.0	-4.9
Victim Based Crime	Offences				Outcomes				Solved Rates %		
Crime Type	2014	2015	# diff.	% diff.	2014	2015	# diff.	% diff.	2014	2015	% pt. diff.
<b>Violence Against the Person</b>	3119	3731	612	19.6	1188	1052	-136	-11.4	38.1	28.2	-9.9
- Homicide	3	3	0	0.0	3	2	-1	-33.3	100.0	66.7	-33.3
- Violence with Injury	1462	1506	44	3.0	571	479	-92	-16.1	39.1	31.8	-7.2
- Violence without Injury	1654	2222	568	34.3	614	571	-43	-7.0	37.1	25.7	-11.4
<b>Sexual Offences</b>	307	352	45	14.7	55	50	-5	-9.1	17.9	14.2	-3.7
- Rape	129	126	-3	-2.3	24	16	-8	-33.3	18.6	12.7	-5.9
- Rape - Under 16 yrs	35	34	-1	-2.9	9	8	-1	-11.1	25.7	23.5	-2.2
- Rape - Over 16 yrs	94	92	-2	-2.1	15	8	-7	-46.7	16.0	8.7	-7.3
- Other Sexual Offences	178	226	48	27.0	31	34	3	9.7	17.4	15.0	-2.4
<b>Robbery</b>	152	167	15	9.9	26	34	8	30.8	17.1	20.4	3.3
- Robbery of business property	11	9	-2	-18.2	5	4	-1	-20.0	45.5	44.4	-1.0
- Robbery of Personal Property	141	158	17	12.1	21	30	9	42.9	14.9	19.0	4.1
<b>Theft Offences</b>	6077	6303	226	3.7	1145	939	-206	-18.0	18.8	14.9	-3.9
- Burglary	1371	1459	88	6.4	125	116	-9	-7.2	9.1	8.0	-1.2
- Dwelling Burglary	784	918	134	17.1	99	73	-26	-26.3	12.6	8.0	-4.7
- Other Burglary	587	541	-46	-7.8	26	43	17	65.4	4.4	7.9	3.5
- Vehicle Offences (incl. Interference)	1520	1597	77	5.1	85	82	-3	-3.5	5.6	5.1	-0.5
- Theft from Vehicle	1019	1079	60	5.9	26	36	10	38.5	2.6	3.3	0.8
- Theft of Motor Vehicle	341	348	7	2.1	52	43	-9	-17.3	15.2	12.4	-2.9
- Vehicle Interference	160	170	10	6.3	7	3	-4	-57.1	4.4	1.8	-2.6
- Theft	3186	3247	61	1.9	935	741	-194	-20.7	29.3	22.8	-6.5
- Theft from the Person	224	240	16	7.1	6	8	2	33.3	2.7	3.3	0.7
- Theft of Pedal Cycle	353	348	-5	-1.4	13	10	-3	-23.1	3.7	2.9	-0.8
- Shoplifting	1155	1160	5	0.4	747	575	-172	-23.0	64.7	49.6	-15.1
- Other Theft	1454	1499	45	3.1	169	148	-21	-12.4	11.6	9.9	-1.7
<b>Criminal Damage inc. Arson</b>	1723	1832	109	6.3	312	281	-31	-9.9	18.1	15.3	-2.8
- Criminal Damage	1651	1792	141	8.5	299	277	-22	-7.4	18.1	15.5	-2.7
- Arson	72	40	-32	-44.4	13	4	-9	-69.2	18.1	10.0	-8.1
<b>Racial/Religiously Aggravated Offences</b>	131	119	-12	-9.2	53	36	-17	-32.1	40.5	30.3	-10.2
State Based Crime	Offences				Outcomes				Solved Rates %		
Crime Type	2014	2015	# diff.	% diff.	2014	2015	# diff.	% diff.	2014	2015	% pt. diff.
<b>Drug Offences</b>	667	393	-274	-41.1	639	360	-279	-43.7	95.8	91.6	-4.2
- Trafficking of Drugs	193	116	-77	-39.9	180	97	-83	-46.1	93.3	83.6	-9.6
- Possession of Drugs	474	277	-197	-41.6	459	263	-196	-42.7	96.8	94.9	-1.9
<b>Possession of Weapons</b>	105	100	-5	-4.8	83	70	-13	-15.7	79.0	70.0	-9.0
<b>Public Order</b>	605	791	186	30.7	321	279	-42	-13.1	53.1	35.3	-17.8
<b>Miscellaneous Crimes against Society</b>	180	195	15	8.3	103	99	-4	-3.9	57.2	50.8	-6.5

**Corporate Services: Performance Summary**  
**Essex Police Performance Summary**

**Castle Point**  
**Cumulative Year to December**

Top Level	Offences				Outcomes				Solved Rates %		
Crime Type	2014	2015	# diff.	% diff.	2014	2015	# diff.	% diff.	2014	2015	% pt. diff.
Anti-Social Behaviour (incidents)	1812	1551	-261	-14.4	-	-	-	-	-	-	-
All Crime (excl. Action (NFIB) Fraud)	2528	2984	456	18.0	654	582	-72	-11.0	25.9	19.5	-6.4
- State Based Crime	243	294	51	21.0	157	121	-36	-22.9	64.6	41.2	-23.5
- Victim Based Crime	2285	2690	405	17.7	497	461	-36	-7.2	21.8	17.1	-4.6
Victim Based Crime	Offences				Outcomes				Solved Rates %		
Crime Type	2014	2015	# diff.	% diff.	2014	2015	# diff.	% diff.	2014	2015	% pt. diff.
Violence Against the Person	632	803	171	27.1	218	207	-11	-5.0	34.5	25.8	-8.7
- Homicide	0	2	2	-	0	1	1	-	-	50.0	-
- Violence with Injury	322	329	7	2.2	111	91	-20	-18.0	34.5	27.7	-6.8
- Violence without Injury	310	472	162	52.3	107	115	8	7.5	34.5	24.4	-10.2
Sexual Offences	74	71	-3	-4.1	11	24	13	118.2	14.9	33.8	18.9
- Rape	23	23	0	0.0	2	4	2	100.0	8.7	17.4	8.7
- Rape - Under 16 yrs	6	10	4	66.7	1	2	1	100.0	16.7	20.0	3.3
- Rape - Over 16 yrs	17	13	-4	-23.5	1	2	1	100.0	5.9	15.4	9.5
- Other Sexual Offences	51	48	-3	-5.9	9	20	11	122.2	17.6	41.7	24.0
Robbery	23	30	7	30.4	3	9	6	200.0	13.0	30.0	17.0
- Robbery of business property	3	10	7	233.3	0	3	3	-	0.0	30.0	30.0
- Robbery of Personal Property	20	20	0	0.0	3	6	3	100.0	15.0	30.0	15.0
Theft Offences	1173	1378	205	17.5	225	158	-67	-29.8	19.2	11.5	-7.7
- Burglary	389	519	130	33.4	41	30	-11	-26.8	10.5	5.8	-4.8
- Dwelling Burglary	242	242	0	0.0	39	15	-24	-61.5	16.1	6.2	-9.9
- Other Burglary	147	277	130	88.4	2	15	13	650.0	1.4	5.4	4.1
- Vehicle Offences (incl. Interference)	246	317	71	28.9	40	21	-19	-47.5	16.3	6.6	-9.6
- Theft from Vehicle	144	189	45	31.3	30	8	-22	-73.3	20.8	4.2	-16.6
- Theft of Motor Vehicle	81	95	14	17.3	10	12	2	20.0	12.3	12.6	0.3
- Vehicle Interference	21	33	12	57.1	0	1	1	-	0.0	3.0	3.0
- Theft	538	542	4	0.7	144	107	-37	-25.7	26.8	19.7	-7.0
- Theft from the Person	18	34	16	88.9	1	2	1	100.0	5.6	5.9	0.3
- Theft of Pedal Cycle	70	40	-30	-42.9	8	2	-6	-75.0	11.4	5.0	-6.4
- Shoplifting	126	138	12	9.5	73	61	-12	-16.4	57.9	44.2	-13.7
- Other Theft	324	330	6	1.9	62	42	-20	-32.3	19.1	12.7	-6.4
Criminal Damage inc. Arson	383	408	25	6.5	40	63	23	57.5	10.4	15.4	5.0
- Criminal Damage	366	393	27	7.4	38	62	24	63.2	10.4	15.8	5.4
- Arson	17	15	-2	-11.8	2	1	-1	-50.0	11.8	6.7	-5.1
Racial/Religiously Aggravated Offences	14	15	1	7.1	3	4	1	33.3	21.4	26.7	5.2
State Based Crime	Offences				Outcomes				Solved Rates %		
Crime Type	2014	2015	# diff.	% diff.	2014	2015	# diff.	% diff.	2014	2015	% pt. diff.
Drug Offences	100	62	-38	-38.0	97	56	-41	-42.3	97.0	90.3	-6.7
- Trafficking of Drugs	11	9	-2	-18.2	9	5	-4	-44.4	81.8	55.6	-26.3
- Possession of Drugs	89	53	-36	-40.4	88	51	-37	-42.0	98.9	96.2	-2.6
Possession of Weapons	17	16	-1	-5.9	10	8	-2	-20.0	58.8	50.0	-8.8
Public Order	101	170	69	68.3	42	44	2	4.8	41.6	25.9	-15.7
Miscellaneous Crimes against Society	25	46	21	84.0	8	13	5	62.5	32.0	28.3	-3.7

**Corporate Services: Performance Summary**  
**Essex Police Performance Summary**

**Castle Point**  
**Rolling 12 Months to December**

Top Level	Offences				Outcomes				Solved Rates %		
Crime Type	2014	2015	# diff.	% diff.	2014	2015	# diff.	% diff.	2014	2015	% pt. diff.
<b>Anti-Social Behaviour (incidents)</b>	2221	2039	-182	-8.2	-	-	-	-	-	-	-
<b>All Crime (excl. Action (NFIB) Fraud)</b>	3394	3782	388	11.4	849	786	-63	-7.4	25.0	20.8	-4.2
- State Based Crime	314	375	61	19.4	206	166	-40	-19.4	65.6	44.3	-21.3
- Victim Based Crime	3080	3407	327	10.6	643	620	-23	-3.6	20.9	18.2	-2.7
Victim Based Crime	Offences				Outcomes				Solved Rates %		
Crime Type	2014	2015	# diff.	% diff.	2014	2015	# diff.	% diff.	2014	2015	% pt. diff.
<b>Violence Against the Person</b>	826	983	157	19.0	287	267	-20	-7.0	34.7	27.2	-7.6
- Homicide	0	2	2	-	0	1	1	-	-	50.0	-
- Violence with Injury	421	408	-13	-3.1	142	118	-24	-16.9	33.7	28.9	-4.8
- Violence without Injury	405	573	168	41.5	145	148	3	2.1	35.8	25.8	-10.0
<b>Sexual Offences</b>	95	100	5	5.3	13	34	21	161.5	13.7	34.0	20.3
- Rape	31	27	-4	-12.9	4	9	5	125.0	12.9	33.3	20.4
- Rape - Under 16 yrs	11	10	-1	-9.1	3	5	2	66.7	27.3	50.0	22.7
- Rape - Over 16 yrs	20	17	-3	-15.0	1	4	3	300.0	5.0	23.5	18.5
- Other Sexual Offences	64	73	9	14.1	9	25	16	177.8	14.1	34.2	20.2
<b>Robbery</b>	30	41	11	36.7	3	10	7	233.3	10.0	24.4	14.4
- Robbery of business property	4	16	12	300.0	0	4	4	-	0.0	25.0	25.0
- Robbery of Personal Property	26	25	-1	-3.8	3	6	3	100.0	11.5	24.0	12.5
<b>Theft Offences</b>	1616	1765	149	9.2	282	227	-55	-19.5	17.5	12.9	-4.6
- Burglary	537	656	119	22.2	47	42	-5	-10.6	8.8	6.4	-2.3
- Dwelling Burglary	341	332	-9	-2.6	44	22	-22	-50.0	12.9	6.6	-6.3
- Other Burglary	196	324	128	65.3	3	20	17	566.7	1.5	6.2	4.6
- Vehicle Offences (incl. Interference)	364	417	53	14.6	43	37	-6	-14.0	11.8	8.9	-2.9
- Theft from Vehicle	228	249	21	9.2	30	21	-9	-30.0	13.2	8.4	-4.7
- Theft of Motor Vehicle	110	120	10	9.1	13	14	1	7.7	11.8	11.7	-0.2
- Vehicle Interference	26	48	22	84.6	0	2	2	-	0.0	4.2	4.2
- Theft	715	692	-23	-3.2	192	148	-44	-22.9	26.9	21.4	-5.5
- Theft from the Person	26	41	15	57.7	2	2	0	0.0	7.7	4.9	-2.8
- Theft of Pedal Cycle	77	56	-21	-27.3	8	5	-3	-37.5	10.4	8.9	-1.5
- Shoplifting	175	175	0	0.0	106	79	-27	-25.5	60.6	45.1	-15.4
- Other Theft	437	420	-17	-3.9	76	62	-14	-18.4	17.4	14.8	-2.6
<b>Criminal Damage inc. Arson</b>	513	518	5	1.0	58	82	24	41.4	11.3	15.8	4.5
- Criminal Damage	494	499	5	1.0	56	80	24	42.9	11.3	16.0	4.7
- Arson	19	19	0	0.0	2	2	0	0.0	10.5	10.5	0.0
<b>Racial/Religiously Aggravated Offences</b>	16	19	3	18.8	7	5	-2	-28.6	43.8	26.3	-17.4
State Based Crime	Offences				Outcomes				Solved Rates %		
Crime Type	2014	2015	# diff.	% diff.	2014	2015	# diff.	% diff.	2014	2015	% pt. diff.
<b>Drug Offences</b>	128	81	-47	-36.7	124	73	-51	-41.1	96.9	90.1	-6.8
- Trafficking of Drugs	15	12	-3	-20.0	12	8	-4	-33.3	80.0	66.7	-13.3
- Possession of Drugs	113	69	-44	-38.9	112	65	-47	-42.0	99.1	94.2	-4.9
<b>Possession of Weapons</b>	22	22	0	0.0	14	15	1	7.1	63.6	68.2	4.5
<b>Public Order</b>	123	209	86	69.9	50	57	7	14.0	40.7	27.3	-13.4
<b>Miscellaneous Crimes against Society</b>	41	63	22	53.7	18	21	3	16.7	43.9	33.3	-10.6

**Corporate Services: Performance Summary**  
**Essex Police Performance Summary**

**Rochford**  
**Cumulative Year to December**

Top Level	Offences				Outcomes				Solved Rates %		
Crime Type	2014	2015	# diff.	% diff.	2014	2015	# diff.	% diff.	2014	2015	% pt. diff.
Anti-Social Behaviour (incidents)	1371	1311	-60	-4.4	-	-	-	-	-	-	-
All Crime (excl. Action (NFIB) Fraud)	1980	2397	417	21.1	494	491	-3	-0.6	24.9	20.5	-4.5
- State Based Crime	159	184	25	15.7	108	88	-20	-18.5	67.9	47.8	-20.1
- Victim Based Crime	1821	2213	392	21.5	386	403	17	4.4	21.2	18.2	-3.0
Victim Based Crime	Offences				Outcomes				Solved Rates %		
Crime Type	2014	2015	# diff.	% diff.	2014	2015	# diff.	% diff.	2014	2015	% pt. diff.
Violence Against the Person	448	628	180	40.2	154	148	-6	-3.9	34.4	23.6	-10.8
- Homicide	1	0	-1	-100.0	0	1	1	-	0.0	-	-
- Violence with Injury	212	251	39	18.4	79	69	-10	-12.7	37.3	27.5	-9.8
- Violence without Injury	235	377	142	60.4	75	78	3	4.0	31.9	20.7	-11.2
Sexual Offences	51	57	6	11.8	13	13	0	0.0	25.5	22.8	-2.7
- Rape	19	21	2	10.5	1	2	1	100.0	5.3	9.5	4.3
- Rape - Under 16 yrs	9	10	1	11.1	0	0	0	-	0.0	0.0	0.0
- Rape - Over 16 yrs	10	11	1	10.0	1	2	1	100.0	10.0	18.2	8.2
- Other Sexual Offences	32	36	4	12.5	12	11	-1	-8.3	37.5	30.6	-6.9
Robbery	10	16	6	60.0	2	4	2	100.0	20.0	25.0	5.0
- Robbery of business property	1	0	-1	-100.0	1	0	-1	-100.0	100.0	-	-
- Robbery of Personal Property	9	16	7	77.8	1	4	3	300.0	11.1	25.0	13.9
Theft Offences	1000	1124	124	12.4	173	197	24	13.9	17.3	17.5	0.2
- Burglary	276	333	57	20.7	19	13	-6	-31.6	6.9	3.9	-3.0
- Dwelling Burglary	171	194	23	13.5	14	5	-9	-64.3	8.2	2.6	-5.6
- Other Burglary	105	139	34	32.4	5	8	3	60.0	4.8	5.8	1.0
- Vehicle Offences (incl. Interference)	210	236	26	12.4	8	8	0	0.0	3.8	3.4	-0.4
- Theft from Vehicle	137	137	0	0.0	3	1	-2	-66.7	2.2	0.7	-1.5
- Theft of Motor Vehicle	59	81	22	37.3	4	7	3	75.0	6.8	8.6	1.9
- Vehicle Interference	14	18	4	28.6	1	0	-1	-100.0	7.1	0.0	-7.1
- Theft	514	555	41	8.0	146	176	30	20.5	28.4	31.7	3.3
- Theft from the Person	27	30	3	11.1	1	1	0	0.0	3.7	3.3	-0.4
- Theft of Pedal Cycle	31	50	19	61.3	0	1	1	-	0.0	2.0	2.0
- Shoplifting	195	244	49	25.1	118	154	36	30.5	60.5	63.1	2.6
- Other Theft	261	231	-30	-11.5	27	20	-7	-25.9	10.3	8.7	-1.7
Criminal Damage inc. Arson	312	388	76	24.4	44	41	-3	-6.8	14.1	10.6	-3.5
- Criminal Damage	303	377	74	24.4	44	40	-4	-9.1	14.5	10.6	-3.9
- Arson	9	11	2	22.2	0	1	1	-	0.0	9.1	9.1
Racial/Religiously Aggravated Offences	12	11	-1	-8.3	6	5	-1	-16.7	50.0	45.5	-4.5
State Based Crime	Offences				Outcomes				Solved Rates %		
Crime Type	2014	2015	# diff.	% diff.	2014	2015	# diff.	% diff.	2014	2015	% pt. diff.
Drug Offences	61	41	-20	-32.8	59	42	-17	-28.8	96.7	102.4	5.7
- Trafficking of Drugs	20	8	-12	-60.0	19	7	-12	-63.2	95.0	87.5	-7.5
- Possession of Drugs	41	33	-8	-19.5	40	35	-5	-12.5	97.6	106.1	8.5
Possession of Weapons	12	14	2	16.7	11	12	1	9.1	91.7	85.7	-6.0
Public Order	61	107	46	75.4	26	28	2	7.7	42.6	26.2	-16.5
Miscellaneous Crimes against Society	25	22	-3	-12.0	12	6	-6	-50.0	48.0	27.3	-20.7

**Corporate Services: Performance Summary**  
**Essex Police Performance Summary**

## Rochford

### Rolling 12 Months to December

Top Level	Offences				Outcomes				Solved Rates %		
Crime Type	2014	2015	# diff.	% diff.	2014	2015	# diff.	% diff.	2014	2015	% pt. diff.
<b>Anti-Social Behaviour (incidents)</b>	1652	1654	2	0.1	-	-	-	-	-	-	-
<b>All Crime (excl. Action (NFIB) Fraud)</b>	2679	3113	434	16.2	675	698	23	3.4	25.2	22.4	-2.8
- State Based Crime	214	245	31	14.5	151	130	-21	-13.9	70.6	53.1	-17.5
- Victim Based Crime	2465	2868	403	16.3	524	568	44	8.4	21.3	19.8	-1.5
Victim Based Crime	Offences				Outcomes				Solved Rates %		
Crime Type	2014	2015	# diff.	% diff.	2014	2015	# diff.	% diff.	2014	2015	% pt. diff.
<b>Violence Against the Person</b>	576	794	218	37.8	215	218	3	1.4	37.3	27.5	-9.9
- Homicide	1	0	-1	-100.0	0	1	1	-	0.0	-	-
- Violence with Injury	289	335	46	15.9	116	110	-6	-5.2	40.1	32.8	-7.3
- Violence without Injury	286	459	173	60.5	99	107	8	8.1	34.6	23.3	-11.3
<b>Sexual Offences</b>	65	74	9	13.8	15	17	2	13.3	23.1	23.0	-0.1
- Rape	23	30	7	30.4	1	4	3	300.0	4.3	13.3	9.0
- Rape - Under 16 yrs	11	12	1	9.1	0	0	0	-	0.0	0.0	0.0
- Rape - Over 16 yrs	12	18	6	50.0	1	4	3	300.0	8.3	22.2	13.9
- Other Sexual Offences	42	44	2	4.8	14	13	-1	-7.1	33.3	29.5	-3.8
<b>Robbery</b>	15	22	7	46.7	3	5	2	66.7	20.0	22.7	2.7
- Robbery of business property	1	3	2	200.0	1	1	0	0.0	100.0	33.3	-66.7
- Robbery of Personal Property	14	19	5	35.7	2	4	2	100.0	14.3	21.1	6.8
<b>Theft Offences</b>	1376	1466	90	6.5	228	271	43	18.9	16.6	18.5	1.9
- Burglary	401	436	35	8.7	24	17	-7	-29.2	6.0	3.9	-2.1
- Dwelling Burglary	246	255	9	3.7	16	7	-9	-56.3	6.5	2.7	-3.8
- Other Burglary	155	181	26	16.8	8	10	2	25.0	5.2	5.5	0.4
- Vehicle Offences (incl. Interference)	306	317	11	3.6	9	12	3	33.3	2.9	3.8	0.8
- Theft from Vehicle	206	181	-25	-12.1	3	2	-1	-33.3	1.5	1.1	-0.4
- Theft of Motor Vehicle	81	111	30	37.0	5	10	5	100.0	6.2	9.0	2.8
- Vehicle Interference	19	25	6	31.6	1	0	-1	-100.0	5.3	0.0	-5.3
- Theft	669	713	44	6.6	195	242	47	24.1	29.1	33.9	4.8
- Theft from the Person	33	44	11	33.3	1	1	0	0.0	3.0	2.3	-0.8
- Theft of Pedal Cycle	39	51	12	30.8	0	2	2	-	0.0	3.9	3.9
- Shoplifting	242	308	66	27.3	158	211	53	33.5	65.3	68.5	3.2
- Other Theft	355	310	-45	-12.7	36	28	-8	-22.2	10.1	9.0	-1.1
<b>Criminal Damage inc. Arson</b>	433	512	79	18.2	63	57	-6	-9.5	14.5	11.1	-3.4
- Criminal Damage	417	495	78	18.7	62	55	-7	-11.3	14.9	11.1	-3.8
- Arson	16	17	1	6.3	1	2	1	100.0	6.3	11.8	5.5
<b>Racial/Religiously Aggravated Offences</b>	14	13	-1	-7.1	7	7	0	0.0	50.0	53.8	3.8
State Based Crime	Offences				Outcomes				Solved Rates %		
Crime Type	2014	2015	# diff.	% diff.	2014	2015	# diff.	% diff.	2014	2015	% pt. diff.
<b>Drug Offences</b>	93	71	-22	-23.7	91	69	-22	-24.2	97.8	97.2	-0.7
- Trafficking of Drugs	22	12	-10	-45.5	22	11	-11	-50.0	100.0	91.7	-8.3
- Possession of Drugs	71	59	-12	-16.9	69	58	-11	-15.9	97.2	98.3	1.1
<b>Possession of Weapons</b>	12	21	9	75.0	12	17	5	41.7	100.0	81.0	-19.0
<b>Public Order</b>	79	121	42	53.2	34	35	1	2.9	43.0	28.9	-14.1
<b>Miscellaneous Crimes against Society</b>	30	32	2	6.7	14	9	-5	-35.7	46.7	28.1	-18.5



**Corporate Services: Performance Summary**  
**Essex Police Performance Summary**

**Basildon**  
**Cumulative Year to December**

Top Level	Offences				Outcomes				Solved Rates %		
Crime Type	2014	2015	# diff.	% diff.	2014	2015	# diff.	% diff.	2014	2015	% pt. diff.
Anti-Social Behaviour (incidents)	5149	4735	-414	-8.0	-	-	-	-	-	-	-
All Crime (excl. Action (NFIB) Fraud)	9065	10773	1708	18.8	2453	1939	-514	-21.0	27.1	18.0	-9.1
- State Based Crime	895	995	100	11.2	653	460	-193	-29.6	73.0	46.2	-26.7
- Victim Based Crime	8170	9778	1608	19.7	1800	1479	-321	-17.8	22.0	15.1	-6.9
Victim Based Crime	Offences				Outcomes				Solved Rates %		
Crime Type	2014	2015	# diff.	% diff.	2014	2015	# diff.	% diff.	2014	2015	% pt. diff.
Violence Against the Person	1950	2613	663	34.0	649	566	-83	-12.8	33.3	21.7	-11.6
- Homicide	0	5	5	-	0	3	3	-	-	60.0	-
- Violence with Injury	906	1020	114	12.6	330	237	-93	-28.2	36.4	23.2	-13.2
- Violence without Injury	1044	1588	544	52.1	319	326	7	2.2	30.6	20.5	-10.0
Sexual Offences	197	252	55	27.9	37	35	-2	-5.4	18.8	13.9	-4.9
- Rape	64	88	24	37.5	15	8	-7	-46.7	23.4	9.1	-14.3
- Rape - Under 16 yrs	21	29	8	38.1	6	6	0	0.0	28.6	20.7	-7.9
- Rape - Over 16 yrs	43	59	16	37.2	9	2	-7	-77.8	20.9	3.4	-17.5
- Other Sexual Offences	133	164	31	23.3	22	27	5	22.7	16.5	16.5	-0.1
Robbery	100	142	42	42.0	15	24	9	60.0	15.0	16.9	1.9
- Robbery of business property	8	11	3	37.5	2	8	6	300.0	25.0	72.7	47.7
- Robbery of Personal Property	92	131	39	42.4	13	16	3	23.1	14.1	12.2	-1.9
Theft Offences	4682	5115	433	9.2	918	703	-215	-23.4	19.6	13.7	-5.9
- Burglary	1330	1412	82	6.2	190	93	-97	-51.1	14.3	6.6	-7.7
- Dwelling Burglary	765	839	74	9.7	168	68	-100	-59.5	22.0	8.1	-13.9
- Other Burglary	565	573	8	1.4	22	25	3	13.6	3.9	4.4	0.5
- Vehicle Offences (incl. Interference)	1267	1669	402	31.7	63	49	-14	-22.2	5.0	2.9	-2.0
- Theft from Vehicle	860	1060	200	23.3	33	14	-19	-57.6	3.8	1.3	-2.5
- Theft of Motor Vehicle	271	399	128	47.2	27	29	2	7.4	10.0	7.3	-2.7
- Vehicle Interference	136	210	74	54.4	3	6	3	100.0	2.2	2.9	0.7
- Theft	2085	2034	-51	-2.4	665	561	-104	-15.6	31.9	27.6	-4.3
- Theft from the Person	138	147	9	6.5	5	5	0	0.0	3.6	3.4	-0.2
- Theft of Pedal Cycle	184	158	-26	-14.1	8	4	-4	-50.0	4.3	2.5	-1.8
- Shoplifting	747	818	71	9.5	526	472	-54	-10.3	70.4	57.7	-12.7
- Other Theft	1016	911	-105	-10.3	126	80	-46	-36.5	12.4	8.8	-3.6
Criminal Damage inc. Arson	1241	1656	415	33.4	181	151	-30	-16.6	14.6	9.1	-5.5
- Criminal Damage	1207	1610	403	33.4	175	150	-25	-14.3	14.5	9.3	-5.2
- Arson	34	46	12	35.3	6	1	-5	-83.3	17.6	2.2	-15.5
Racial/Religiously Aggravated Offences	86	72	-14	-16.3	27	20	-7	-25.9	31.4	27.8	-3.6
State Based Crime	Offences				Outcomes				Solved Rates %		
Crime Type	2014	2015	# diff.	% diff.	2014	2015	# diff.	% diff.	2014	2015	% pt. diff.
Drug Offences	443	262	-181	-40.9	428	243	-185	-43.2	96.6	92.7	-3.9
- Trafficking of Drugs	79	65	-14	-17.7	69	53	-16	-23.2	87.3	81.5	-5.8
- Possession of Drugs	364	197	-167	-45.9	359	190	-169	-47.1	98.6	96.4	-2.2
Possession of Weapons	50	68	18	36.0	35	36	1	2.9	70.0	52.9	-17.1
Public Order	313	512	199	63.6	137	132	-5	-3.6	43.8	25.8	-18.0
Miscellaneous Crimes against Society	89	153	64	71.9	53	49	-4	-7.5	59.6	32.0	-27.5

**Corporate Services: Performance Summary**  
**Essex Police Performance Summary**

## Basildon

### Rolling 12 Months to December

Top Level	Offences				Outcomes				Solved Rates %		
Crime Type	2014	2015	# diff.	% diff.	2014	2015	# diff.	% diff.	2014	2015	% pt. diff.
<b>Anti-Social Behaviour (incidents)</b>	6295	6048	-247	-3.9	-	-	-	-	-	-	-
<b>All Crime (excl. Action (NFIB) Fraud)</b>	12180	13864	1684	13.8	3289	2702	-587	-17.8	27.0	19.5	-7.5
- State Based Crime	1209	1283	74	6.1	908	653	-255	-28.1	75.1	50.9	-24.2
- Victim Based Crime	10971	12581	1610	14.7	2381	2049	-332	-13.9	21.7	16.3	-5.4
Victim Based Crime	Offences				Outcomes				Solved Rates %		
Crime Type	2014	2015	# diff.	% diff.	2014	2015	# diff.	% diff.	2014	2015	% pt. diff.
<b>Violence Against the Person</b>	2522	3235	713	28.3	848	755	-93	-11.0	33.6	23.3	-10.3
- Homicide	0	5	5	-	0	3	3	-	-	60.0	-
- Violence with Injury	1178	1318	140	11.9	424	324	-100	-23.6	36.0	24.6	-11.4
- Violence without Injury	1344	1912	568	42.3	424	428	4	0.9	31.5	22.4	-9.2
<b>Sexual Offences</b>	273	344	71	26.0	50	57	7	14.0	18.3	16.6	-1.7
- Rape	92	119	27	29.3	18	11	-7	-38.9	19.6	9.2	-10.3
- Rape - Under 16 yrs	29	40	11	37.9	7	7	0	0.0	24.1	17.5	-6.6
- Rape - Over 16 yrs	63	79	16	25.4	11	4	-7	-63.6	17.5	5.1	-12.4
- Other Sexual Offences	181	225	44	24.3	32	46	14	43.8	17.7	20.4	2.8
<b>Robbery</b>	141	186	45	31.9	16	32	16	100.0	11.3	17.2	5.9
- Robbery of business property	15	20	5	33.3	2	11	9	450.0	13.3	55.0	41.7
- Robbery of Personal Property	126	166	40	31.7	14	21	7	50.0	11.1	12.7	1.5
<b>Theft Offences</b>	6307	6752	445	7.1	1225	1000	-225	-18.4	19.4	14.8	-4.6
- Burglary	1778	1901	123	6.9	228	151	-77	-33.8	12.8	7.9	-4.9
- Dwelling Burglary	1069	1146	77	7.2	197	112	-85	-43.1	18.4	9.8	-8.7
- Other Burglary	709	755	46	6.5	31	39	8	25.8	4.4	5.2	0.8
- Vehicle Offences (incl. Interference)	1728	2189	461	26.7	76	75	-1	-1.3	4.4	3.4	-1.0
- Theft from Vehicle	1195	1412	217	18.2	41	25	-16	-39.0	3.4	1.8	-1.7
- Theft of Motor Vehicle	374	488	114	30.5	32	42	10	31.3	8.6	8.6	0.1
- Vehicle Interference	159	289	130	81.8	3	8	5	166.7	1.9	2.8	0.9
- Theft	2801	2662	-139	-5.0	921	774	-147	-16.0	32.9	29.1	-3.8
- Theft from the Person	188	187	-1	-0.5	8	6	-2	-25.0	4.3	3.2	-1.0
- Theft of Pedal Cycle	226	200	-26	-11.5	11	6	-5	-45.5	4.9	3.0	-1.9
- Shoplifting	1043	1075	32	3.1	735	634	-101	-13.7	70.5	59.0	-11.5
- Other Theft	1344	1200	-144	-10.7	167	128	-39	-23.4	12.4	10.7	-1.8
<b>Criminal Damage inc. Arson</b>	1728	2064	336	19.4	242	205	-37	-15.3	14.0	9.9	-4.1
- Criminal Damage	1676	2012	336	20.0	235	201	-34	-14.5	14.0	10.0	-4.0
- Arson	52	52	0	0.0	7	4	-3	-42.9	13.5	7.7	-5.8
<b>Racial/Religiously Aggravated Offences</b>	103	91	-12	-11.7	28	28	0	0.0	27.2	30.8	3.6
State Based Crime	Offences				Outcomes				Solved Rates %		
Crime Type	2014	2015	# diff.	% diff.	2014	2015	# diff.	% diff.	2014	2015	% pt. diff.
<b>Drug Offences</b>	621	378	-243	-39.1	604	348	-256	-42.4	97.3	92.1	-5.2
- Trafficking of Drugs	105	84	-21	-20.0	90	74	-16	-17.8	85.7	88.1	2.4
- Possession of Drugs	516	294	-222	-43.0	514	274	-240	-46.7	99.6	93.2	-6.4
<b>Possession of Weapons</b>	69	87	18	26.1	54	50	-4	-7.4	78.3	57.5	-20.8
<b>Public Order</b>	406	622	216	53.2	177	186	9	5.1	43.6	29.9	-13.7
<b>Miscellaneous Crimes against Society</b>	113	196	83	73.5	73	69	-4	-5.5	64.6	35.2	-29.4

**Corporate Services: Performance Summary**  
**Essex Police Performance Summary**

**Thurrock**  
**Cumulative Year to December**

Top Level	Offences				Outcomes				Solved Rates %		
Crime Type	2014	2015	# diff.	% diff.	2014	2015	# diff.	% diff.	2014	2015	% pt. diff.
Anti-Social Behaviour (incidents)	4589	4307	-282	-6.1	-	-	-	-	-	-	-
All Crime (excl. Action (NFIB) Fraud)	8225	9188	963	11.7	1974	1829	-145	-7.3	24.0	19.9	-4.1
- State Based Crime	656	863	207	31.6	401	393	-8	-2.0	61.1	45.5	-15.6
- Victim Based Crime	7569	8325	756	10.0	1573	1436	-137	-8.7	20.8	17.2	-3.5
Victim Based Crime	Offences				Outcomes				Solved Rates %		
Crime Type	2014	2015	# diff.	% diff.	2014	2015	# diff.	% diff.	2014	2015	% pt. diff.
Violence Against the Person	1772	2193	421	23.8	553	587	34	6.1	31.2	26.8	-4.4
- Homicide	0	0	0	-	0	0	0	-	-	-	-
- Violence with Injury	781	882	101	12.9	271	283	12	4.4	34.7	32.1	-2.6
- Violence without Injury	991	1311	320	32.3	282	304	22	7.8	28.5	23.2	-5.3
Sexual Offences	189	185	-4	-2.1	30	24	-6	-20.0	15.9	13.0	-2.9
- Rape	71	74	3	4.2	9	6	-3	-33.3	12.7	8.1	-4.6
- Rape - Under 16 yrs	26	26	0	0.0	6	5	-1	-16.7	23.1	19.2	-3.8
- Rape - Over 16 yrs	45	48	3	6.7	3	1	-2	-66.7	6.7	2.1	-4.6
- Other Sexual Offences	118	111	-7	-5.9	21	18	-3	-14.3	17.8	16.2	-1.6
Robbery	85	74	-11	-12.9	19	19	0	0.0	22.4	25.7	3.3
- Robbery of business property	16	10	-6	-37.5	4	5	1	25.0	25.0	50.0	25.0
- Robbery of Personal Property	69	64	-5	-7.2	15	14	-1	-6.7	21.7	21.9	0.1
Theft Offences	4473	4604	131	2.9	817	653	-164	-20.1	18.3	14.2	-4.1
- Burglary	1058	987	-71	-6.7	124	68	-56	-45.2	11.7	6.9	-4.8
- Dwelling Burglary	631	499	-132	-20.9	90	51	-39	-43.3	14.3	10.2	-4.0
- Other Burglary	427	488	61	14.3	34	17	-17	-50.0	8.0	3.5	-4.5
- Vehicle Offences (incl. Interference)	1216	1280	64	5.3	93	32	-61	-65.6	7.6	2.5	-5.1
- Theft from Vehicle	732	779	47	6.4	31	7	-24	-77.4	4.2	0.9	-3.3
- Theft of Motor Vehicle	379	412	33	8.7	58	24	-34	-58.6	15.3	5.8	-9.5
- Vehicle Interference	105	89	-16	-15.2	4	1	-3	-75.0	3.8	1.1	-2.7
- Theft	2199	2337	138	6.3	600	553	-47	-7.8	27.3	23.7	-3.6
- Theft from the Person	94	130	36	38.3	1	5	4	400.0	1.1	3.8	2.8
- Theft of Pedal Cycle	191	226	35	18.3	12	5	-7	-58.3	6.3	2.2	-4.1
- Shoplifting	864	984	120	13.9	480	449	-31	-6.5	55.6	45.6	-9.9
- Other Theft	1050	997	-53	-5.0	107	94	-13	-12.1	10.2	9.4	-0.8
Criminal Damage inc. Arson	1050	1269	219	20.9	154	153	-1	-0.6	14.7	12.1	-2.6
- Criminal Damage	1014	1201	187	18.4	151	145	-6	-4.0	14.9	12.1	-2.8
- Arson	36	68	32	88.9	3	8	5	166.7	8.3	11.8	3.4
Racial/Religiously Aggravated Offences	109	108	-1	-0.9	30	13	-17	-56.7	27.5	12.0	-15.5
State Based Crime	Offences				Outcomes				Solved Rates %		
Crime Type	2014	2015	# diff.	% diff.	2014	2015	# diff.	% diff.	2014	2015	% pt. diff.
Drug Offences	213	226	13	6.1	196	186	-10	-5.1	92.0	82.3	-9.7
- Trafficking of Drugs	39	48	9	23.1	27	25	-2	-7.4	69.2	52.1	-17.1
- Possession of Drugs	174	178	4	2.3	169	161	-8	-4.7	97.1	90.4	-6.7
Possession of Weapons	54	70	16	29.6	36	47	11	30.6	66.7	67.1	0.5
Public Order	299	443	144	48.2	122	107	-15	-12.3	40.8	24.2	-16.6
Miscellaneous Crimes against Society	90	124	34	37.8	47	53	6	12.8	52.2	42.7	-9.5

**Corporate Services: Performance Summary**  
**Essex Police Performance Summary**

**Thurrock**  
**Rolling 12 Months to December**

Top Level	Offences				Outcomes				Solved Rates %		
Crime Type	2014	2015	# diff.	% diff.	2014	2015	# diff.	% diff.	2014	2015	% pt. diff.
<b>Anti-Social Behaviour (incidents)</b>	5752	5585	-167	-2.9	-	-	-	-	-	-	-
<b>All Crime (excl. Action (NFIB) Fraud)</b>	11021	11922	901	8.2	2636	2472	-164	-6.2	23.9	20.7	-3.2
- State Based Crime	897	1087	190	21.2	582	530	-52	-8.9	64.9	48.8	-16.1
- Victim Based Crime	10124	10835	711	7.0	2054	1942	-112	-5.5	20.3	17.9	-2.4
Victim Based Crime	Offences				Outcomes				Solved Rates %		
Crime Type	2014	2015	# diff.	% diff.	2014	2015	# diff.	% diff.	2014	2015	% pt. diff.
<b>Violence Against the Person</b>	2305	2783	478	20.7	720	798	78	10.8	31.2	28.7	-2.6
- Homicide	1	0	-1	-100.0	2	0	-2	-100.0	200.0	-	-
- Violence with Injury	1016	1126	110	10.8	347	383	36	10.4	34.2	34.0	-0.1
- Violence without Injury	1288	1657	369	28.6	371	415	44	11.9	28.8	25.0	-3.8
<b>Sexual Offences</b>	234	245	11	4.7	38	36	-2	-5.3	16.2	14.7	-1.5
- Rape	83	99	16	19.3	12	11	-1	-8.3	14.5	11.1	-3.3
- Rape - Under 16 yrs	29	38	9	31.0	9	8	-1	-11.1	31.0	21.1	-10.0
- Rape - Over 16 yrs	54	61	7	13.0	3	3	0	0.0	5.6	4.9	-0.6
- Other Sexual Offences	151	146	-5	-3.3	26	25	-1	-3.8	17.2	17.1	-0.1
<b>Robbery</b>	116	100	-16	-13.8	23	25	2	8.7	19.8	25.0	5.2
- Robbery of business property	18	18	0	0.0	4	6	2	50.0	22.2	33.3	11.1
- Robbery of Personal Property	98	82	-16	-16.3	19	19	0	0.0	19.4	23.2	3.8
<b>Theft Offences</b>	6042	6061	19	0.3	1061	872	-189	-17.8	17.6	14.4	-3.2
- Burglary	1481	1345	-136	-9.2	150	95	-55	-36.7	10.1	7.1	-3.1
- Dwelling Burglary	876	679	-197	-22.5	101	70	-31	-30.7	11.5	10.3	-1.2
- Other Burglary	605	666	61	10.1	49	25	-24	-49.0	8.1	3.8	-4.3
- Vehicle Offences (incl. Interference)	1692	1746	54	3.2	105	53	-52	-49.5	6.2	3.0	-3.2
- Theft from Vehicle	1056	1066	10	0.9	37	14	-23	-62.2	3.5	1.3	-2.2
- Theft of Motor Vehicle	511	530	19	3.7	64	33	-31	-48.4	12.5	6.2	-6.3
- Vehicle Interference	125	150	25	20.0	4	6	2	50.0	3.2	4.0	0.8
- Theft	2869	2970	101	3.5	806	724	-82	-10.2	28.1	24.4	-3.7
- Theft from the Person	117	157	40	34.2	1	5	4	400.0	0.9	3.2	2.3
- Theft of Pedal Cycle	231	270	39	16.9	15	5	-10	-66.7	6.5	1.9	-4.6
- Shoplifting	1159	1254	95	8.2	638	583	-55	-8.6	55.0	46.5	-8.6
- Other Theft	1362	1289	-73	-5.4	152	131	-21	-13.8	11.2	10.2	-1.0
<b>Criminal Damage inc. Arson</b>	1427	1646	219	15.3	212	211	-1	-0.5	14.9	12.8	-2.0
- Criminal Damage	1380	1568	188	13.6	208	201	-7	-3.4	15.1	12.8	-2.3
- Arson	47	78	31	66.0	4	10	6	150.0	8.5	12.8	4.3
<b>Racial/Religiously Aggravated Offences</b>	143	153	10	7.0	37	21	-16	-43.2	25.9	13.7	-12.1
State Based Crime	Offences				Outcomes				Solved Rates %		
Crime Type	2014	2015	# diff.	% diff.	2014	2015	# diff.	% diff.	2014	2015	% pt. diff.
<b>Drug Offences</b>	308	302	-6	-1.9	280	263	-17	-6.1	90.9	87.1	-3.8
- Trafficking of Drugs	62	57	-5	-8.1	47	36	-11	-23.4	75.8	63.2	-12.6
- Possession of Drugs	246	245	-1	-0.4	233	227	-6	-2.6	94.7	92.7	-2.1
<b>Possession of Weapons</b>	71	87	16	22.5	52	59	7	13.5	73.2	67.8	-5.4
<b>Public Order</b>	382	545	163	42.7	167	146	-21	-12.6	43.7	26.8	-16.9
<b>Miscellaneous Crimes against Society</b>	136	153	17	12.5	83	62	-21	-25.3	61.0	40.5	-20.5

**Corporate Services: Performance Summary**  
**Essex Police Performance Summary**

**Epping**  
**Cumulative Year to December**

Top Level	Offences				Outcomes				Solved Rates %		
Crime Type	2014	2015	# diff.	% diff.	2014	2015	# diff.	% diff.	2014	2015	% pt. diff.
Anti-Social Behaviour (incidents)	2963	2815	-148	-5.0	-	-	-	-	-	-	-
All Crime (excl. Action (NFIB) Fraud)	5027	5729	702	14.0	946	834	-112	-11.8	18.8	14.6	-4.3
- State Based Crime	458	564	106	23.1	251	235	-16	-6.4	54.8	41.7	-13.1
- Victim Based Crime	4569	5165	596	13.0	695	599	-96	-13.8	15.2	11.6	-3.6
Victim Based Crime	Offences				Outcomes				Solved Rates %		
Crime Type	2014	2015	# diff.	% diff.	2014	2015	# diff.	% diff.	2014	2015	% pt. diff.
Violence Against the Person	1025	1321	296	28.9	304	258	-46	-15.1	29.7	19.5	-10.1
- Homicide	0	1	1	-	0	0	0	-	-	0.0	-
- Violence with Injury	458	518	60	13.1	147	114	-33	-22.4	32.1	22.0	-10.1
- Violence without Injury	567	802	235	41.4	157	144	-13	-8.3	27.7	18.0	-9.7
Sexual Offences	98	97	-1	-1.0	11	11	0	0.0	11.2	11.3	0.1
- Rape	44	33	-11	-25.0	2	5	3	150.0	4.5	15.2	10.6
- Rape - Under 16 yrs	14	10	-4	-28.6	1	0	-1	-100.0	7.1	0.0	-7.1
- Rape - Over 16 yrs	30	23	-7	-23.3	1	5	4	400.0	3.3	21.7	18.4
- Other Sexual Offences	54	64	10	18.5	9	6	-3	-33.3	16.7	9.4	-7.3
Robbery	73	58	-15	-20.5	16	5	-11	-68.8	21.9	8.6	-13.3
- Robbery of business property	3	5	2	66.7	0	1	1	-	0.0	20.0	20.0
- Robbery of Personal Property	70	53	-17	-24.3	16	4	-12	-75.0	22.9	7.5	-15.3
Theft Offences	2696	3049	353	13.1	271	241	-30	-11.1	10.1	7.9	-2.1
- Burglary	818	881	63	7.7	51	48	-3	-5.9	6.2	5.4	-0.8
- Dwelling Burglary	526	561	35	6.7	44	36	-8	-18.2	8.4	6.4	-1.9
- Other Burglary	292	320	28	9.6	7	12	5	71.4	2.4	3.8	1.4
- Vehicle Offences (incl. Interference)	734	979	245	33.4	17	91	74	435.3	2.3	9.3	7.0
- Theft from Vehicle	428	576	148	34.6	3	59	56	1866.7	0.7	10.2	9.5
- Theft of Motor Vehicle	242	300	58	24.0	9	27	18	200.0	3.7	9.0	5.3
- Vehicle Interference	64	103	39	60.9	5	5	0	0.0	7.8	4.9	-3.0
- Theft	1144	1189	45	3.9	203	102	-101	-49.8	17.7	8.6	-9.2
- Theft from the Person	68	46	-22	-32.4	1	0	-1	-100.0	1.5	0.0	-1.5
- Theft of Pedal Cycle	44	66	22	50.0	3	2	-1	-33.3	6.8	3.0	-3.8
- Shoplifting	352	341	-11	-3.1	111	79	-32	-28.8	31.5	23.2	-8.4
- Other Theft	680	736	56	8.2	88	21	-67	-76.1	12.9	2.9	-10.1
Criminal Damage inc. Arson	677	640	-37	-5.5	93	84	-9	-9.7	13.7	13.1	-0.6
- Criminal Damage	655	620	-35	-5.3	93	83	-10	-10.8	14.2	13.4	-0.8
- Arson	22	20	-2	-9.1	0	1	1	-	0.0	5.0	5.0
Racial/Religiously Aggravated Offences	54	55	1	1.9	16	11	-5	-31.3	29.6	20.0	-9.6
State Based Crime	Offences				Outcomes				Solved Rates %		
Crime Type	2014	2015	# diff.	% diff.	2014	2015	# diff.	% diff.	2014	2015	% pt. diff.
Drug Offences	110	145	35	31.8	95	135	40	42.1	86.4	93.1	6.7
- Trafficking of Drugs	14	25	11	78.6	8	17	9	112.5	57.1	68.0	10.9
- Possession of Drugs	96	120	24	25.0	87	118	31	35.6	90.6	98.3	7.7
Possession of Weapons	25	31	6	24.0	16	22	6	37.5	64.0	71.0	7.0
Public Order	253	301	48	19.0	113	52	-61	-54.0	44.7	17.3	-27.4
Miscellaneous Crimes against Society	70	87	17	24.3	27	26	-1	-3.7	38.6	29.9	-8.7

**Corporate Services: Performance Summary**  
**Essex Police Performance Summary**

## Epping

### Rolling 12 Months to December

Top Level	Offences				Outcomes				Solved Rates %		
Crime Type	2014	2015	# diff.	% diff.	2014	2015	# diff.	% diff.	2014	2015	% pt. diff.
<b>Anti-Social Behaviour (incidents)</b>	3601	3591	-10	-0.3	-	-	-	-	-	-	-
<b>All Crime (excl. Action (NFIB) Fraud)</b>	6588	7383	795	12.1	1290	1129	-161	-12.5	19.6	15.3	-4.3
- State Based Crime	600	701	101	16.8	360	314	-46	-12.8	60.0	44.8	-15.2
- Victim Based Crime	5988	6682	694	11.6	930	815	-115	-12.4	15.5	12.2	-3.3
Victim Based Crime	Offences				Outcomes				Solved Rates %		
Crime Type	2014	2015	# diff.	% diff.	2014	2015	# diff.	% diff.	2014	2015	% pt. diff.
<b>Violence Against the Person</b>	1330	1675	345	25.9	422	359	-63	-14.9	31.7	21.4	-10.3
- Homicide	0	1	1	-	0	0	0	-	-	0.0	-
- Violence with Injury	595	655	60	10.1	200	160	-40	-20.0	33.6	24.4	-9.2
- Violence without Injury	735	1019	284	38.6	222	199	-23	-10.4	30.2	19.5	-10.7
<b>Sexual Offences</b>	114	126	12	10.5	11	20	9	81.8	9.6	15.9	6.2
- Rape	48	43	-5	-10.4	2	8	6	300.0	4.2	18.6	14.4
- Rape - Under 16 yrs	14	12	-2	-14.3	1	0	-1	-100.0	7.1	0.0	-7.1
- Rape - Over 16 yrs	34	31	-3	-8.8	1	8	7	700.0	2.9	25.8	22.9
- Other Sexual Offences	66	83	17	25.8	9	12	3	33.3	13.6	14.5	0.8
<b>Robbery</b>	93	74	-19	-20.4	19	9	-10	-52.6	20.4	12.2	-8.3
- Robbery of business property	3	5	2	66.7	0	1	1	-	0.0	20.0	20.0
- Robbery of Personal Property	90	69	-21	-23.3	19	8	-11	-57.9	21.1	11.6	-9.5
<b>Theft Offences</b>	3582	3953	371	10.4	359	323	-36	-10.0	10.0	8.2	-1.9
- Burglary	1067	1156	89	8.3	65	77	12	18.5	6.1	6.7	0.6
- Dwelling Burglary	678	765	87	12.8	53	65	12	22.6	7.8	8.5	0.7
- Other Burglary	389	391	2	0.5	12	12	0	0.0	3.1	3.1	0.0
- Vehicle Offences (incl. Interference)	1021	1285	264	25.9	24	100	76	316.7	2.4	7.8	5.4
- Theft from Vehicle	606	749	143	23.6	4	62	58	1450.0	0.7	8.3	7.6
- Theft of Motor Vehicle	322	403	81	25.2	15	32	17	113.3	4.7	7.9	3.3
- Vehicle Interference	93	133	40	43.0	5	6	1	20.0	5.4	4.5	-0.9
- Theft	1494	1512	18	1.2	270	146	-124	-45.9	18.1	9.7	-8.4
- Theft from the Person	85	59	-26	-30.6	1	0	-1	-100.0	1.2	0.0	-1.2
- Theft of Pedal Cycle	58	72	14	24.1	3	2	-1	-33.3	5.2	2.8	-2.4
- Shoplifting	446	448	2	0.4	143	109	-34	-23.8	32.1	24.3	-7.7
- Other Theft	905	933	28	3.1	123	35	-88	-71.5	13.6	3.8	-9.8
<b>Criminal Damage inc. Arson</b>	869	854	-15	-1.7	119	104	-15	-12.6	13.7	12.2	-1.5
- Criminal Damage	845	828	-17	-2.0	119	103	-16	-13.4	14.1	12.4	-1.6
- Arson	24	26	2	8.3	0	1	1	-	0.0	3.8	3.8
<b>Racial/Religiously Aggravated Offences</b>	68	79	11	16.2	19	15	-4	-21.1	27.9	19.0	-9.0
State Based Crime	Offences				Outcomes				Solved Rates %		
Crime Type	2014	2015	# diff.	% diff.	2014	2015	# diff.	% diff.	2014	2015	% pt. diff.
<b>Drug Offences</b>	157	190	33	21.0	142	173	31	21.8	90.4	91.1	0.6
- Trafficking of Drugs	20	32	12	60.0	14	20	6	42.9	70.0	62.5	-7.5
- Possession of Drugs	137	158	21	15.3	128	153	25	19.5	93.4	96.8	3.4
<b>Possession of Weapons</b>	34	43	9	26.5	24	30	6	25.0	70.6	69.8	-0.8
<b>Public Order</b>	322	359	37	11.5	153	74	-79	-51.6	47.5	20.6	-26.9
<b>Miscellaneous Crimes against Society</b>	87	109	22	25.3	41	37	-4	-9.8	47.1	33.9	-13.2



**Corporate Services: Performance Summary**  
**Essex Police Performance Summary**

**Harlow**

**Cumulative Year to December**

Top Level	Offences				Outcomes				Solved Rates %		
Crime Type	2014	2015	# diff.	% diff.	2014	2015	# diff.	% diff.	2014	2015	% pt. diff.
Anti-Social Behaviour (incidents)	3356	2869	-487	-14.5	-	-	-	-	-	-	-
All Crime (excl. Action (NFIB) Fraud)	5011	5432	421	8.4	1613	1364	-249	-15.4	32.2	25.1	-7.1
- State Based Crime	581	535	-46	-7.9	430	286	-144	-33.5	74.0	53.5	-20.6
- Victim Based Crime	4430	4897	467	10.5	1183	1078	-105	-8.9	26.7	22.0	-4.7
Victim Based Crime	Offences				Outcomes				Solved Rates %		
Crime Type	2014	2015	# diff.	% diff.	2014	2015	# diff.	% diff.	2014	2015	% pt. diff.
Violence Against the Person	1094	1397	303	27.7	428	391	-37	-8.6	39.1	28.0	-11.1
- Homicide	0	2	2	-	0	0	0	-	-	0.0	-
- Violence with Injury	493	553	60	12.2	189	176	-13	-6.9	38.3	31.8	-6.5
- Violence without Injury	601	842	241	40.1	239	215	-24	-10.0	39.8	25.5	-14.2
Sexual Offences	105	148	43	41.0	13	25	12	92.3	12.4	16.9	4.5
- Rape	36	38	2	5.6	5	5	0	0.0	13.9	13.2	-0.7
- Rape - Under 16 yrs	10	8	-2	-20.0	1	1	0	0.0	10.0	12.5	2.5
- Rape - Over 16 yrs	26	30	4	15.4	4	4	0	0.0	15.4	13.3	-2.1
- Other Sexual Offences	69	110	41	59.4	8	20	12	150.0	11.6	18.2	6.6
Robbery	74	47	-27	-36.5	10	11	1	10.0	13.5	23.4	9.9
- Robbery of business property	6	2	-4	-66.7	0	1	1	-	0.0	50.0	50.0
- Robbery of Personal Property	68	45	-23	-33.8	10	10	0	0.0	14.7	22.2	7.5
Theft Offences	2493	2640	147	5.9	607	559	-48	-7.9	24.3	21.2	-3.2
- Burglary	512	507	-5	-1.0	55	22	-33	-60.0	10.7	4.3	-6.4
- Dwelling Burglary	267	238	-29	-10.9	42	13	-29	-69.0	15.7	5.5	-10.3
- Other Burglary	245	269	24	9.8	13	9	-4	-30.8	5.3	3.3	-2.0
- Vehicle Offences (incl. Interference)	466	688	222	47.6	29	116	87	300.0	6.2	16.9	10.6
- Theft from Vehicle	327	469	142	43.4	11	89	78	709.1	3.4	19.0	15.6
- Theft of Motor Vehicle	95	150	55	57.9	17	16	-1	-5.9	17.9	10.7	-7.2
- Vehicle Interference	44	69	25	56.8	1	11	10	1000.0	2.3	15.9	13.7
- Theft	1515	1445	-70	-4.6	523	421	-102	-19.5	34.5	29.1	-5.4
- Theft from the Person	70	83	13	18.6	1	3	2	200.0	1.4	3.6	2.2
- Theft of Pedal Cycle	85	104	19	22.4	3	2	-1	-33.3	3.5	1.9	-1.6
- Shoplifting	836	724	-112	-13.4	462	365	-97	-21.0	55.3	50.4	-4.8
- Other Theft	524	534	10	1.9	57	51	-6	-10.5	10.9	9.6	-1.3
Criminal Damage inc. Arson	664	665	1	0.2	125	92	-33	-26.4	18.8	13.8	-5.0
- Criminal Damage	640	640	0	0.0	121	92	-29	-24.0	18.9	14.4	-4.5
- Arson	24	25	1	4.2	4	0	-4	-100.0	16.7	0.0	-16.7
Racial/Religiously Aggravated Offences	60	41	-19	-31.7	22	20	-2	-9.1	36.7	48.8	12.1
State Based Crime	Offences				Outcomes				Solved Rates %		
Crime Type	2014	2015	# diff.	% diff.	2014	2015	# diff.	% diff.	2014	2015	% pt. diff.
Drug Offences	226	170	-56	-24.8	221	145	-76	-34.4	97.8	85.3	-12.5
- Trafficking of Drugs	53	37	-16	-30.2	52	24	-28	-53.8	98.1	64.9	-33.2
- Possession of Drugs	173	133	-40	-23.1	169	121	-48	-28.4	97.7	91.0	-6.7
Possession of Weapons	28	35	7	25.0	24	26	2	8.3	85.7	74.3	-11.4
Public Order	271	266	-5	-1.8	153	95	-58	-37.9	56.5	35.7	-20.7
Miscellaneous Crimes against Society	56	64	8	14.3	32	20	-12	-37.5	57.1	31.3	-25.9

**Corporate Services: Performance Summary**  
**Essex Police Performance Summary**

## Harlow

### Rolling 12 Months to December

Top Level	Offences				Outcomes				Solved Rates %		
Crime Type	2014	2015	# diff.	% diff.	2014	2015	# diff.	% diff.	2014	2015	% pt. diff.
<b>Anti-Social Behaviour (incidents)</b>	4116	3860	-256	-6.2	-	-	-	-	-	-	-
<b>All Crime (excl. Action (NFIB) Fraud)</b>	6628	7179	551	8.3	2222	1877	-345	-15.5	33.5	26.1	-7.4
- State Based Crime	788	692	-96	-12.2	602	390	-212	-35.2	76.4	56.4	-20.0
- Victim Based Crime	5840	6487	647	11.1	1620	1487	-133	-8.2	27.7	22.9	-4.8
Victim Based Crime	Offences				Outcomes				Solved Rates %		
Crime Type	2014	2015	# diff.	% diff.	2014	2015	# diff.	% diff.	2014	2015	% pt. diff.
<b>Violence Against the Person</b>	1427	1786	359	25.2	566	535	-31	-5.5	39.7	30.0	-9.7
- Homicide	0	2	2	-	0	0	0	-	-	0.0	-
- Violence with Injury	648	714	66	10.2	250	228	-22	-8.8	38.6	31.9	-6.6
- Violence without Injury	779	1070	291	37.4	316	307	-9	-2.8	40.6	28.7	-11.9
<b>Sexual Offences</b>	136	194	58	42.6	20	34	14	70.0	14.7	17.5	2.8
- Rape	49	57	8	16.3	7	9	2	28.6	14.3	15.8	1.5
- Rape - Under 16 yrs	15	17	2	13.3	2	2	0	0.0	13.3	11.8	-1.6
- Rape - Over 16 yrs	34	40	6	17.6	5	7	2	40.0	14.7	17.5	2.8
- Other Sexual Offences	87	137	50	57.5	13	25	12	92.3	14.9	18.2	3.3
<b>Robbery</b>	91	74	-17	-18.7	12	17	5	41.7	13.2	23.0	9.8
- Robbery of business property	6	4	-2	-33.3	0	1	1	-	0.0	25.0	25.0
- Robbery of Personal Property	85	70	-15	-17.6	12	16	4	33.3	14.1	22.9	8.7
<b>Theft Offences</b>	3318	3536	218	6.6	835	776	-59	-7.1	25.2	21.9	-3.2
- Burglary	696	691	-5	-0.7	88	52	-36	-40.9	12.6	7.5	-5.1
- Dwelling Burglary	370	317	-53	-14.3	70	37	-33	-47.1	18.9	11.7	-7.2
- Other Burglary	326	374	48	14.7	18	15	-3	-16.7	5.5	4.0	-1.5
- Vehicle Offences (incl. Interference)	621	925	304	49.0	40	127	87	217.5	6.4	13.7	7.3
- Theft from Vehicle	445	619	174	39.1	16	93	77	481.3	3.6	15.0	11.4
- Theft of Motor Vehicle	126	217	91	72.2	23	23	0	0.0	18.3	10.6	-7.7
- Vehicle Interference	50	89	39	78.0	1	11	10	1000.0	2.0	12.4	10.4
- Theft	2001	1920	-81	-4.0	707	597	-110	-15.6	35.3	31.1	-4.2
- Theft from the Person	90	98	8	8.9	4	3	-1	-25.0	4.4	3.1	-1.4
- Theft of Pedal Cycle	115	136	21	18.3	4	5	1	25.0	3.5	3.7	0.2
- Shoplifting	1124	1006	-118	-10.5	621	515	-106	-17.1	55.2	51.2	-4.1
- Other Theft	672	680	8	1.2	78	74	-4	-5.1	11.6	10.9	-0.7
<b>Criminal Damage inc. Arson</b>	868	897	29	3.3	187	125	-62	-33.2	21.5	13.9	-7.6
- Criminal Damage	839	861	22	2.6	182	124	-58	-31.9	21.7	14.4	-7.3
- Arson	29	36	7	24.1	5	1	-4	-80.0	17.2	2.8	-14.5
<b>Racial/Religiously Aggravated Offences</b>	78	64	-14	-17.9	30	26	-4	-13.3	38.5	40.6	2.2
State Based Crime	Offences				Outcomes				Solved Rates %		
Crime Type	2014	2015	# diff.	% diff.	2014	2015	# diff.	% diff.	2014	2015	% pt. diff.
<b>Drug Offences</b>	349	221	-128	-36.7	335	198	-137	-40.9	96.0	89.6	-6.4
- Trafficking of Drugs	130	40	-90	-69.2	122	32	-90	-73.8	93.8	80.0	-13.8
- Possession of Drugs	219	181	-38	-17.4	213	166	-47	-22.1	97.3	91.7	-5.5
<b>Possession of Weapons</b>	36	50	14	38.9	31	41	10	32.3	86.1	82.0	-4.1
<b>Public Order</b>	331	331	0	0.0	194	122	-72	-37.1	58.6	36.9	-21.8
<b>Miscellaneous Crimes against Society</b>	72	90	18	25.0	42	29	-13	-31.0	58.3	32.2	-26.1

**Corporate Services: Performance Summary**  
**Essex Police Performance Summary**

**Brentwood**  
**Cumulative Year to December**

Top Level	Offences				Outcomes				Solved Rates %		
Crime Type	2014	2015	# diff.	% diff.	2014	2015	# diff.	% diff.	2014	2015	% pt. diff.
Anti-Social Behaviour (incidents)	1460	1563	103	7.1	-	-	-	-	-	-	-
All Crime (excl. Action (NFIB) Fraud)	2544	2905	361	14.2	580	428	-152	-26.2	22.8	14.7	-8.1
- State Based Crime	168	181	13	7.7	121	75	-46	-38.0	72.0	41.4	-30.6
- Victim Based Crime	2376	2724	348	14.6	459	353	-106	-23.1	19.3	13.0	-6.4
Victim Based Crime	Offences				Outcomes				Solved Rates %		
Crime Type	2014	2015	# diff.	% diff.	2014	2015	# diff.	% diff.	2014	2015	% pt. diff.
Violence Against the Person	488	554	66	13.5	171	123	-48	-28.1	35.0	22.2	-12.8
- Homicide	1	1	0	0.0	1	0	-1	-100.0	100.0	0.0	-100.0
- Violence with Injury	201	240	39	19.4	73	56	-17	-23.3	36.3	23.3	-13.0
- Violence without Injury	286	313	27	9.4	97	67	-30	-30.9	33.9	21.4	-12.5
Sexual Offences	41	55	14	34.1	13	1	-12	-92.3	31.7	1.8	-29.9
- Rape	9	16	7	77.8	3	1	-2	-66.7	33.3	6.3	-27.1
- Rape - Under 16 yrs	3	4	1	33.3	3	0	-3	-100.0	100.0	0.0	-100.0
- Rape - Over 16 yrs	6	12	6	100.0	0	1	1	-	0.0	8.3	8.3
- Other Sexual Offences	32	39	7	21.9	10	0	-10	-100.0	31.3	0.0	-31.3
Robbery	14	25	11	78.6	3	8	5	166.7	21.4	32.0	10.6
- Robbery of business property	2	3	1	50.0	0	2	2	-	0.0	66.7	66.7
- Robbery of Personal Property	12	22	10	83.3	3	6	3	100.0	25.0	27.3	2.3
Theft Offences	1541	1714	173	11.2	228	187	-41	-18.0	14.8	10.9	-3.9
- Burglary	463	469	6	1.3	73	61	-12	-16.4	15.8	13.0	-2.8
- Dwelling Burglary	316	302	-14	-4.4	66	49	-17	-25.8	20.9	16.2	-4.7
- Other Burglary	147	167	20	13.6	7	12	5	71.4	4.8	7.2	2.4
- Vehicle Offences (incl. Interference)	445	578	133	29.9	17	17	0	0.0	3.8	2.9	-0.9
- Theft from Vehicle	296	353	57	19.3	7	6	-1	-14.3	2.4	1.7	-0.7
- Theft of Motor Vehicle	113	163	50	44.2	10	6	-4	-40.0	8.8	3.7	-5.2
- Vehicle Interference	36	62	26	72.2	0	5	5	-	0.0	8.1	8.1
- Theft	633	667	34	5.4	138	109	-29	-21.0	21.8	16.3	-5.5
- Theft from the Person	20	55	35	175.0	2	0	-2	-100.0	10.0	0.0	-10.0
- Theft of Pedal Cycle	53	40	-13	-24.5	1	2	1	100.0	1.9	5.0	3.1
- Shoplifting	143	184	41	28.7	86	78	-8	-9.3	60.1	42.4	-17.7
- Other Theft	417	388	-29	-7.0	49	29	-20	-40.8	11.8	7.5	-4.3
Criminal Damage inc. Arson	292	376	84	28.8	44	34	-10	-22.7	15.1	9.0	-6.0
- Criminal Damage	284	363	79	27.8	44	34	-10	-22.7	15.5	9.4	-6.1
- Arson	8	13	5	62.5	0	0	0	-	0.0	0.0	0.0
Racial/Religiously Aggravated Offences	23	13	-10	-43.5	6	4	-2	-33.3	26.1	30.8	4.7
State Based Crime	Offences				Outcomes				Solved Rates %		
Crime Type	2014	2015	# diff.	% diff.	2014	2015	# diff.	% diff.	2014	2015	% pt. diff.
Drug Offences	58	29	-29	-50.0	61	30	-31	-50.8	105.2	103.4	-1.7
- Trafficking of Drugs	4	8	4	100.0	6	9	3	50.0	150.0	112.5	-37.5
- Possession of Drugs	54	21	-33	-61.1	55	21	-34	-61.8	101.9	100.0	-1.9
Possession of Weapons	8	14	6	75.0	6	13	7	116.7	75.0	92.9	17.9
Public Order	79	108	29	36.7	42	23	-19	-45.2	53.2	21.3	-31.9
Miscellaneous Crimes against Society	23	30	7	30.4	12	9	-3	-25.0	52.2	30.0	-22.2

**Corporate Services: Performance Summary**  
**Essex Police Performance Summary**

## Brentwood

### Rolling 12 Months to December

Top Level	Offences				Outcomes				Solved Rates %		
Crime Type	2014	2015	# diff.	% diff.	2014	2015	# diff.	% diff.	2014	2015	% pt. diff.
<b>Anti-Social Behaviour (incidents)</b>	1825	2036	211	11.6	-	-	-	-	-	-	-
<b>All Crime (excl. Action (NFIB) Fraud)</b>	3367	3849	482	14.3	770	593	-177	-23.0	22.9	15.4	-7.5
- State Based Crime	239	241	2	0.8	181	119	-62	-34.3	75.7	49.4	-26.4
- Victim Based Crime	3128	3608	480	15.3	589	474	-115	-19.5	18.8	13.1	-5.7
Victim Based Crime	Offences				Outcomes				Solved Rates %		
Crime Type	2014	2015	# diff.	% diff.	2014	2015	# diff.	% diff.	2014	2015	% pt. diff.
<b>Violence Against the Person</b>	652	735	83	12.7	234	174	-60	-25.6	35.9	23.7	-12.2
- Homicide	1	1	0	0.0	1	0	-1	-100.0	100.0	0.0	-100.0
- Violence with Injury	291	312	21	7.2	104	77	-27	-26.0	35.7	24.7	-11.1
- Violence without Injury	360	422	62	17.2	129	97	-32	-24.8	35.8	23.0	-12.8
<b>Sexual Offences</b>	51	72	21	41.2	17	2	-15	-88.2	33.3	2.8	-30.6
- Rape	12	19	7	58.3	3	1	-2	-66.7	25.0	5.3	-19.7
- Rape - Under 16 yrs	4	5	1	25.0	3	0	-3	-100.0	75.0	0.0	-75.0
- Rape - Over 16 yrs	8	14	6	75.0	0	1	1	-	0.0	7.1	7.1
- Other Sexual Offences	39	53	14	35.9	14	1	-13	-92.9	35.9	1.9	-34.0
<b>Robbery</b>	18	29	11	61.1	4	10	6	150.0	22.2	34.5	12.3
- Robbery of business property	2	4	2	100.0	0	3	3	-	0.0	75.0	75.0
- Robbery of Personal Property	16	25	9	56.3	4	7	3	75.0	25.0	28.0	3.0
<b>Theft Offences</b>	2040	2280	240	11.8	283	243	-40	-14.1	13.9	10.7	-3.2
- Burglary	606	645	39	6.4	76	78	2	2.6	12.5	12.1	-0.4
- Dwelling Burglary	417	428	11	2.6	67	61	-6	-9.0	16.1	14.3	-1.8
- Other Burglary	189	217	28	14.8	9	17	8	88.9	4.8	7.8	3.1
- Vehicle Offences (incl. Interference)	598	779	181	30.3	21	25	4	19.0	3.5	3.2	-0.3
- Theft from Vehicle	405	476	71	17.5	8	7	-1	-12.5	2.0	1.5	-0.5
- Theft of Motor Vehicle	154	219	65	42.2	13	13	0	0.0	8.4	5.9	-2.5
- Vehicle Interference	39	84	45	115.4	0	5	5	-	0.0	6.0	6.0
- Theft	836	856	20	2.4	186	140	-46	-24.7	22.2	16.4	-5.9
- Theft from the Person	29	67	38	131.0	2	0	-2	-100.0	6.9	0.0	-6.9
- Theft of Pedal Cycle	59	42	-17	-28.8	1	2	1	100.0	1.7	4.8	3.1
- Shoplifting	221	231	10	4.5	124	95	-29	-23.4	56.1	41.1	-15.0
- Other Theft	527	516	-11	-2.1	59	43	-16	-27.1	11.2	8.3	-2.9
<b>Criminal Damage inc. Arson</b>	367	492	125	34.1	51	45	-6	-11.8	13.9	9.1	-4.8
- Criminal Damage	359	477	118	32.9	51	44	-7	-13.7	14.2	9.2	-5.0
- Arson	8	15	7	87.5	0	1	1	-	0.0	6.7	6.7
<b>Racial/Religiously Aggravated Offences</b>	31	17	-14	-45.2	9	6	-3	-33.3	29.0	35.3	6.3
State Based Crime	Offences				Outcomes				Solved Rates %		
Crime Type	2014	2015	# diff.	% diff.	2014	2015	# diff.	% diff.	2014	2015	% pt. diff.
<b>Drug Offences</b>	92	56	-36	-39.1	91	54	-37	-40.7	98.9	96.4	-2.5
- Trafficking of Drugs	8	11	3	37.5	9	10	1	11.1	112.5	90.9	-21.6
- Possession of Drugs	84	45	-39	-46.4	82	44	-38	-46.3	97.6	97.8	0.2
<b>Possession of Weapons</b>	10	18	8	80.0	8	17	9	112.5	80.0	94.4	14.4
<b>Public Order</b>	105	128	23	21.9	63	35	-28	-44.4	60.0	27.3	-32.7
<b>Miscellaneous Crimes against Society</b>	32	39	7	21.9	19	13	-6	-31.6	59.4	33.3	-26.0