

Corporate Services

Essex Police Performance Summary to October 2015



Date: 13th November 2015

Unit: Performance Information Unit

Contact: David Howard

Corporate Services: Performance Summary

Essex Police Performance Summary: To October 2015

1. Introduction

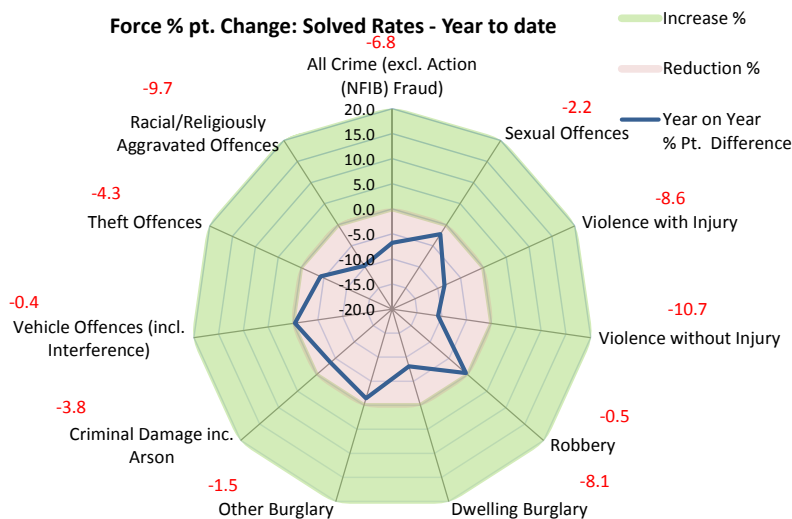
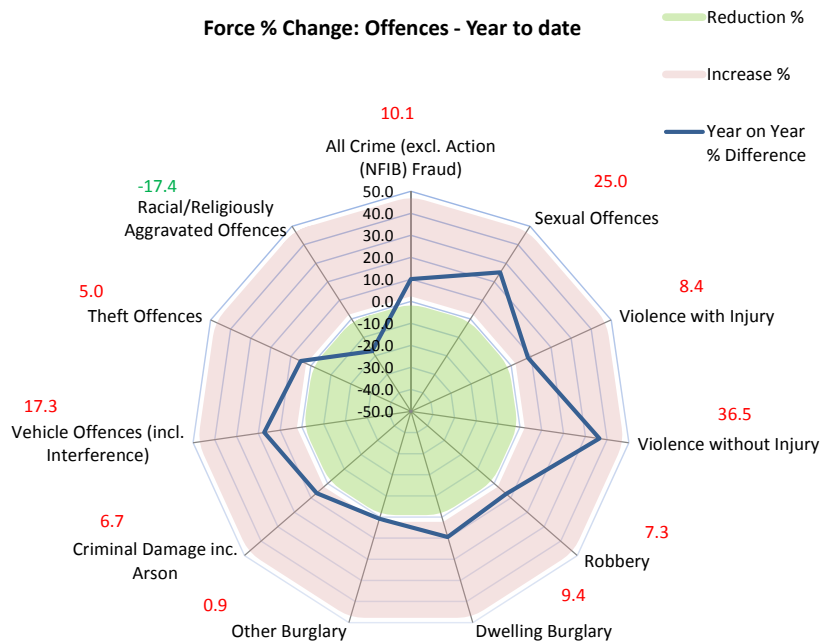
This performance summary is designed to pictorially represent how individual districts are performing within each crime type.

The report includes:

- Charts to show the cumulative (from April) percentage differences between the number of offences, and the percentage pt. differences between the solved rates, in each district, for the current period compared to the same period the previous year.
- Tables of data relating to both cumulative and rolling figures for this district.

Solved Rate: Essex Police could potentially still be under-extracting the number of crimes that have been solved.

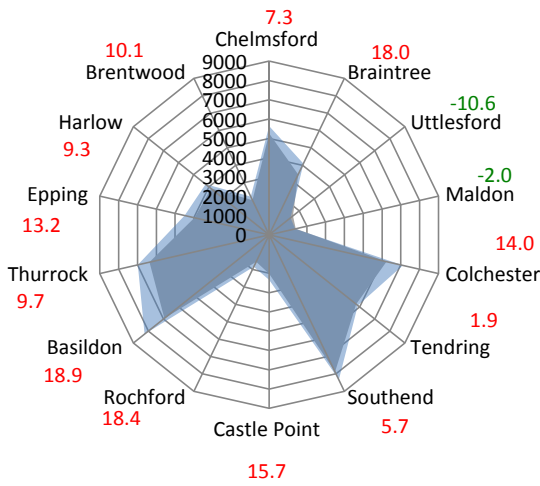
2. Current Position



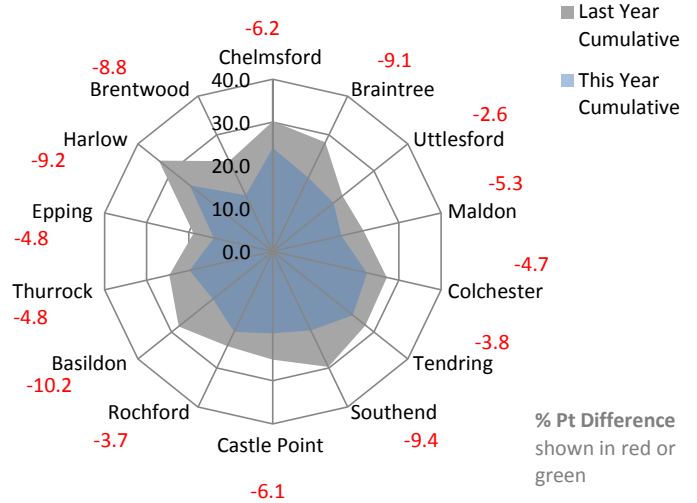
Corporate Services: Performance Summary

Essex Police Performance Summary: To October 2015

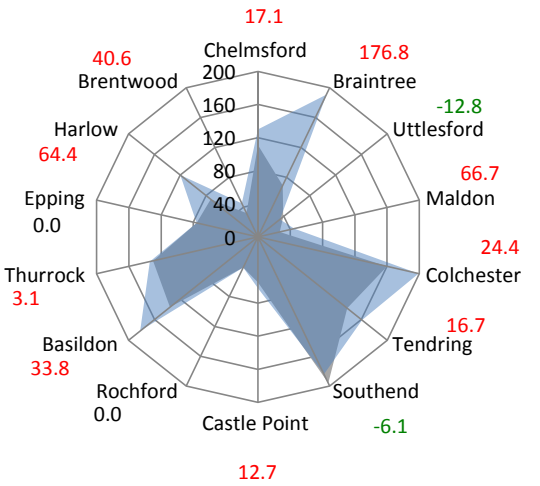
All Crime Offences - Year to date



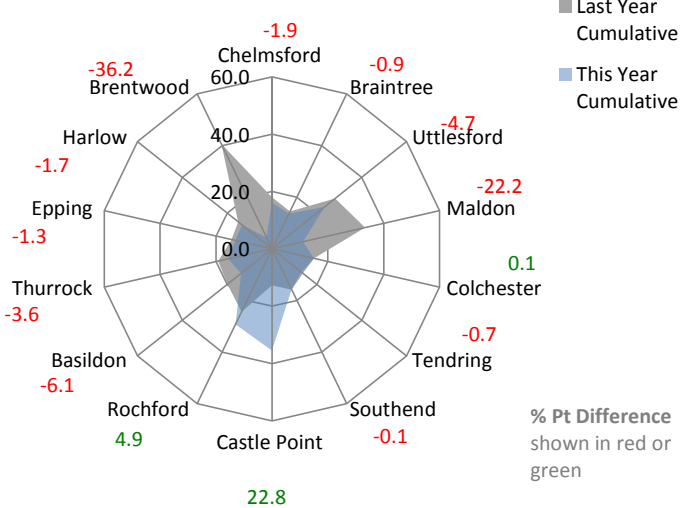
All Crime Solved Rate - Year to date



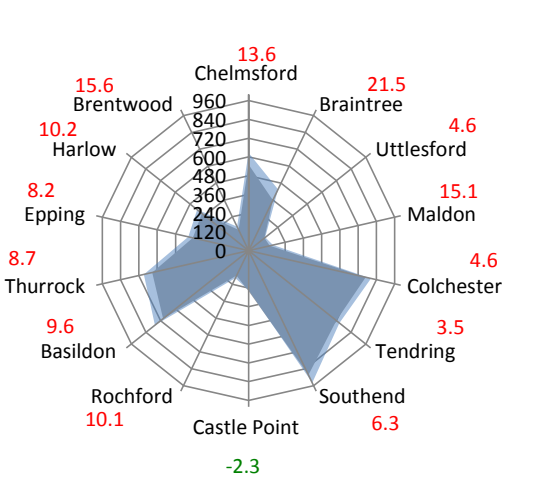
Sexual Offences - Year to date



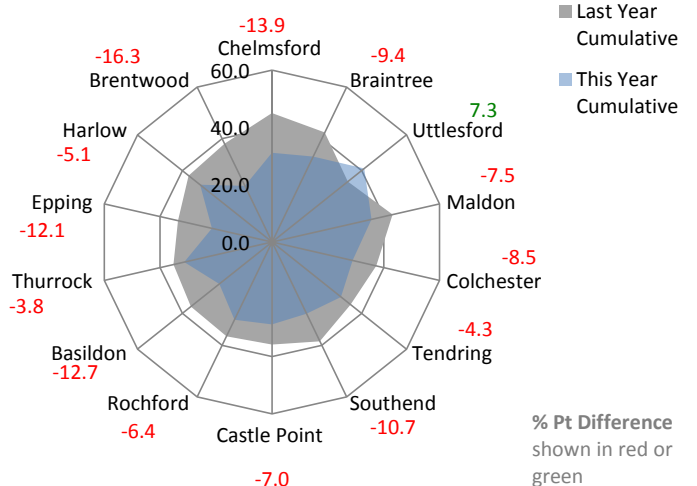
Sexual Offences Solved Rate - Year to date



Violence with Injury Offences - Year to date



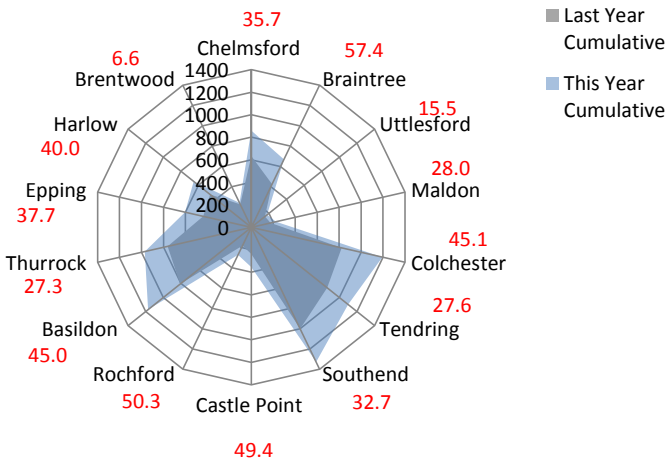
Violence with Injury Solved Rate - Year to date



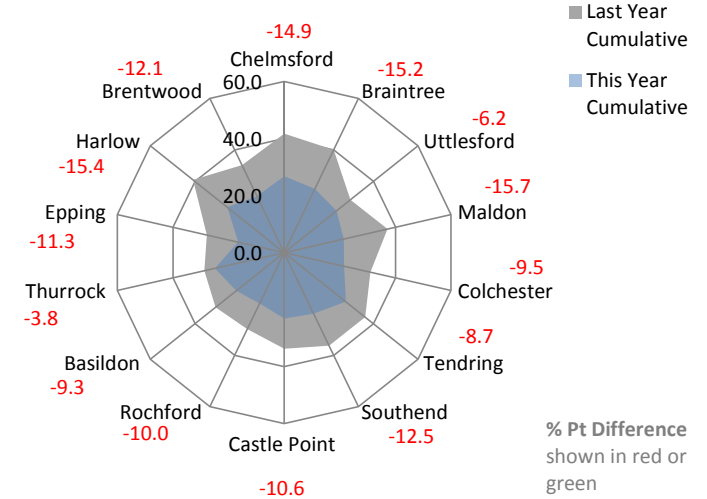
Corporate Services: Performance Summary

Essex Police Performance Summary: To October 2015

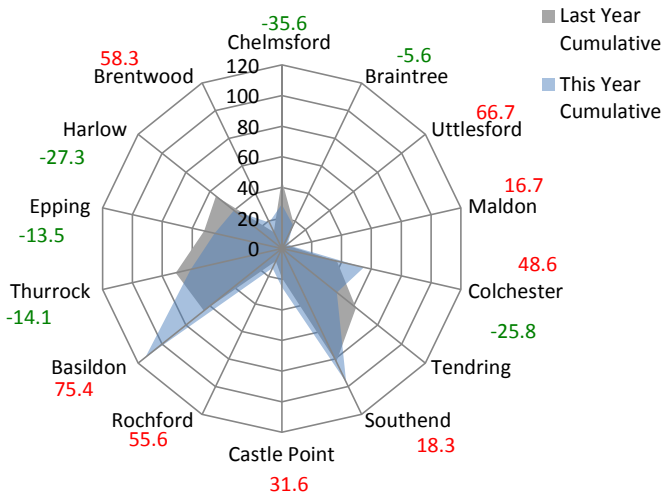
Violence without Injury Offences - Year to date



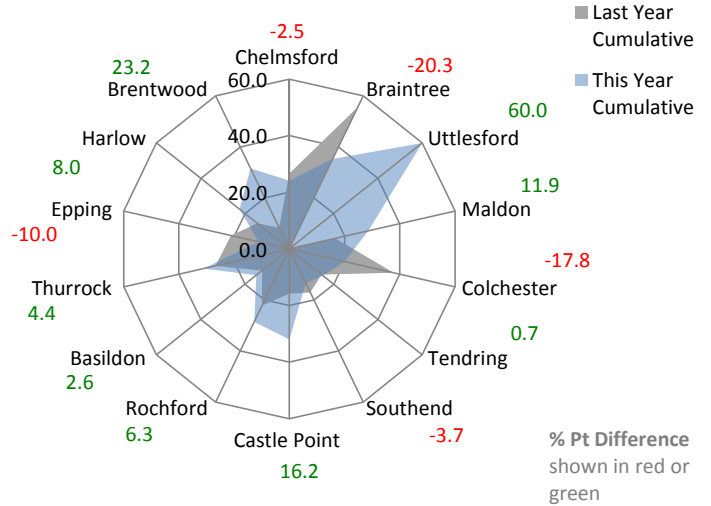
Violence without Injury Solved Rate - Year to date



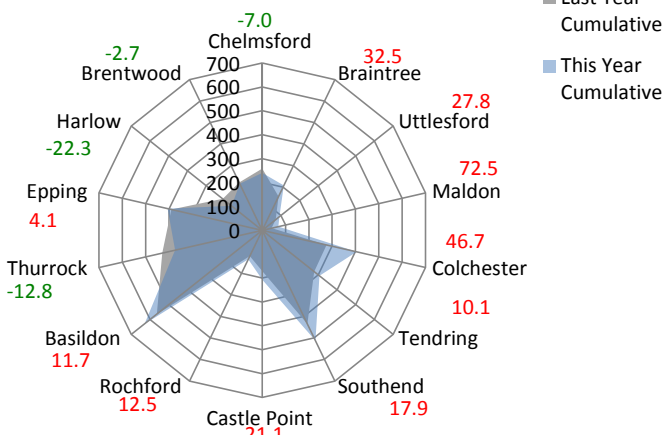
Robbery Offences - Year to date



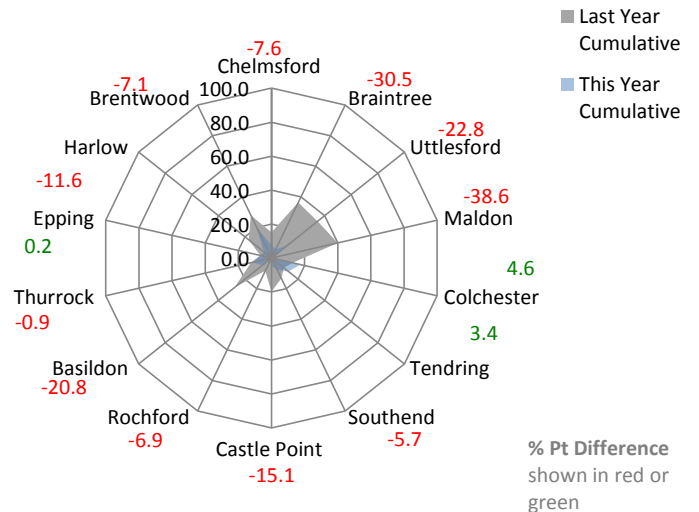
Robbery Solved Rate - Year to date



Dwelling Burglary Offences - Year to date



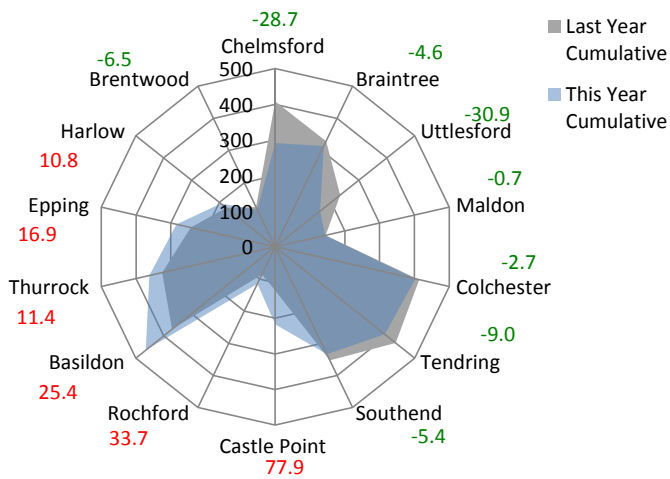
Dwelling Burglary Solved Rate - Year to date



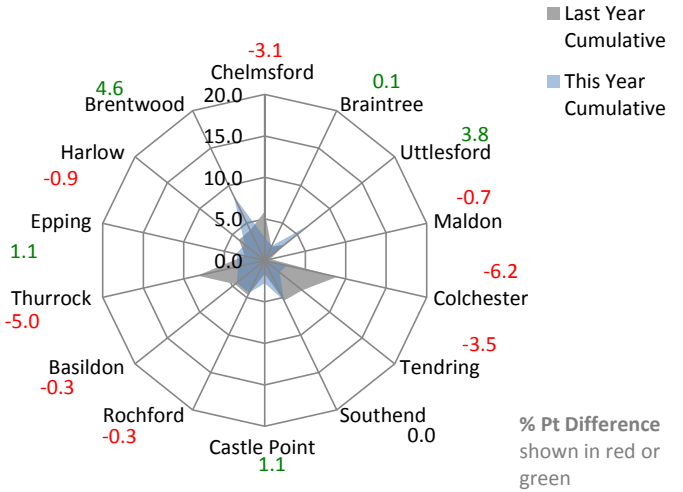
Corporate Services: Performance Summary

Essex Police Performance Summary: To October 2015

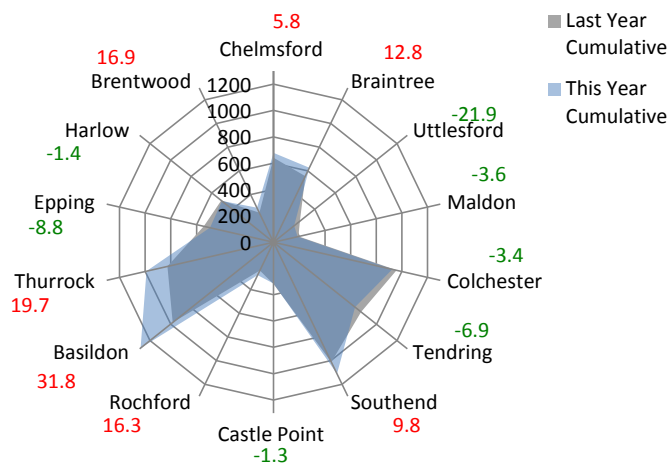
Other Burglary Offences - Year to date



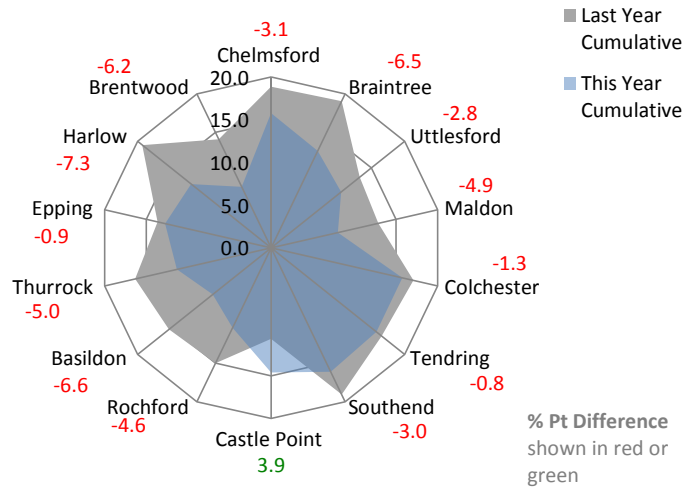
Other Burglary Solved Rate - Year to date



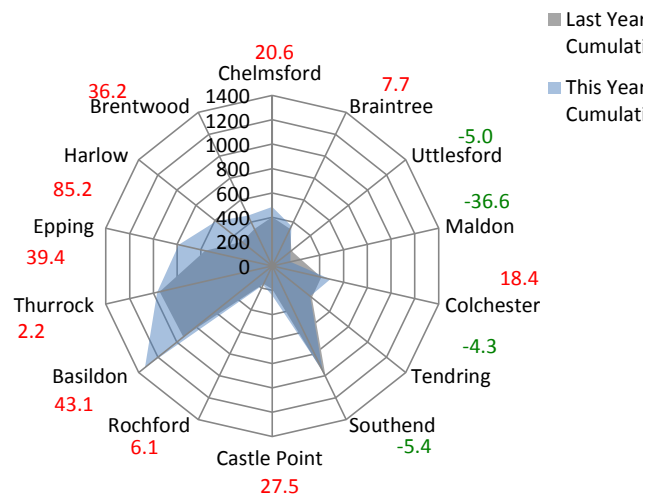
Criminal Damage Offences - Year to date



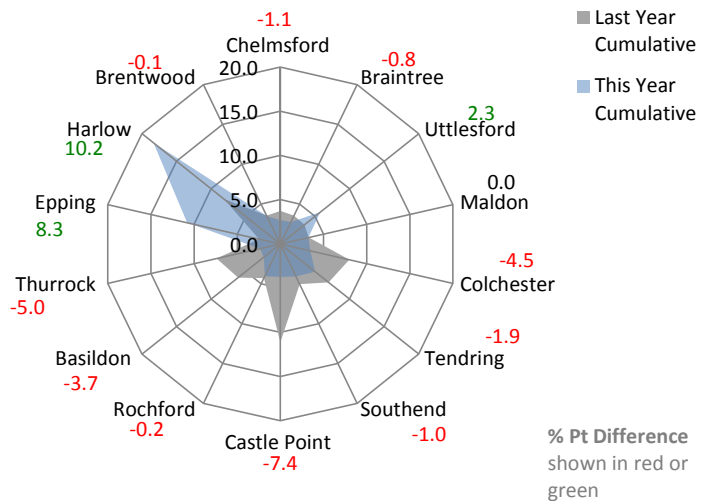
Criminal Damage Solved Rate - Year to date



Vehicle Offences - Year to date



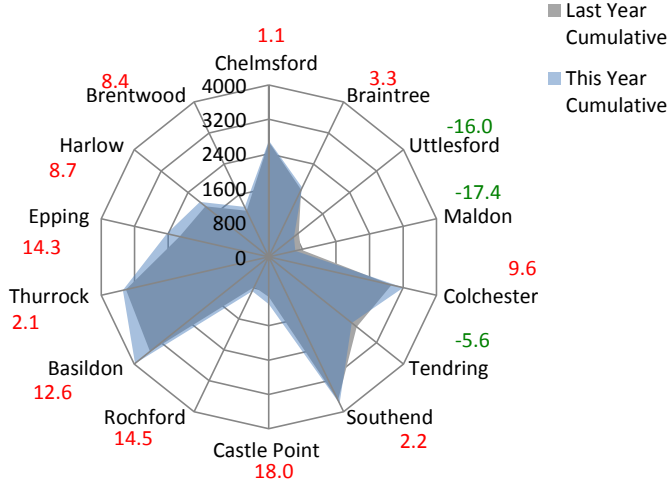
Vehicle Offences Solved Rate - Year to date



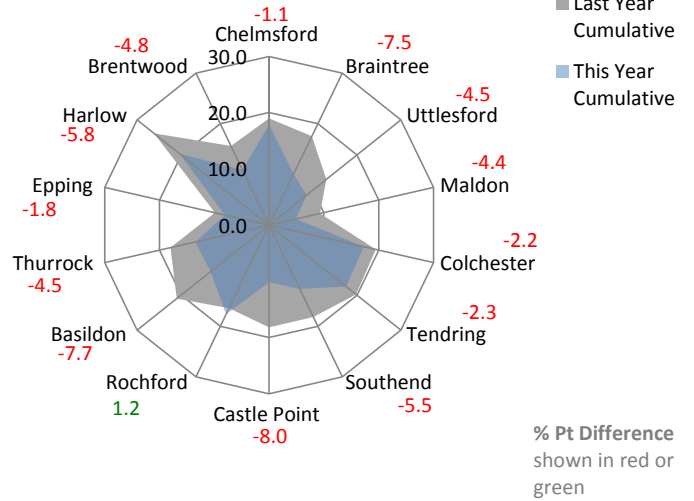
Corporate Services: Performance Summary

Essex Police Performance Summary: To October 2015

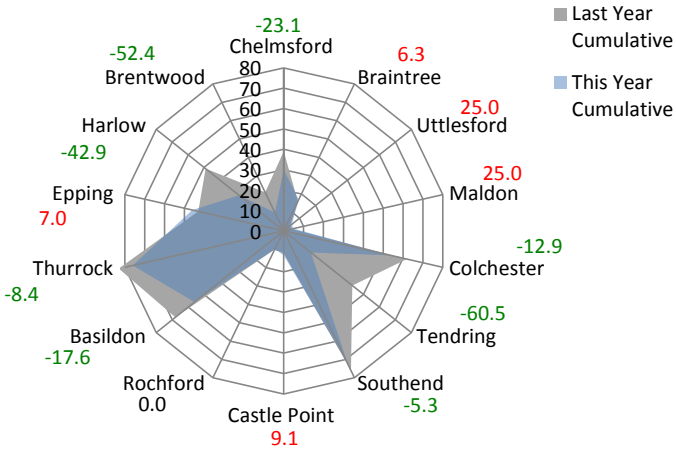
Theft Offences - Year to date



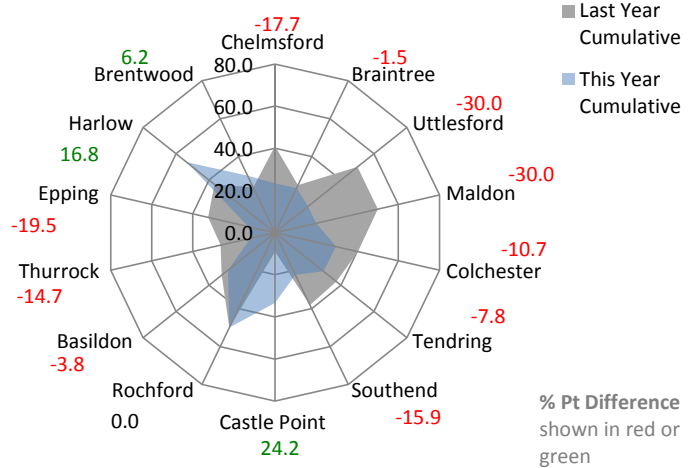
Theft Offences Solved Rate - Year to date



Racial / Religiously Aggravated Offences - Year to date % Difference



Racial/Religiously Aggravated Offences Solved Rate - Year to date



Corporate Services: Performance Summary
Essex Police Performance Summary

Force
Cumulative Year to October

Top Level	Offences				Outcomes				Solved Rates %		
Crime Type	2014	2015	# diff.	% diff.	2014	2015	# diff.	% diff.	2014	2015	% pt. diff.
Anti-Social Behaviour (incidents)	36002	33321	-2681	-7.4	-	-	-	-	-	-	-
All Crime (excl. Action (NFIB) Fraud)	58893	64822	5929	10.1	16076	13293	-2783	-17.3	27.3	20.5	-6.8
- State Based Crime	6015	6396	381	6.3	4158	3158	-1000	-24.1	69.1	49.4	-19.8
- Victim Based Crime	52878	58426	5548	10.5	11918	10135	-1783	-15.0	22.5	17.3	-5.2
Victim Based Crime	Offences				Outcomes				Solved Rates %		
Crime Type	2014	2015	# diff.	% diff.	2014	2015	# diff.	% diff.	2014	2015	% pt. diff.
Violence Against the Person	13438	16607	3169	23.6	4827	4304	-523	-10.8	35.9	25.9	-10.0
- Homicide	7	18	11	157.1	5	12	7	140.0	71.4	66.7	-4.8
- Violence with Injury	6221	6745	524	8.4	2342	1962	-380	-16.2	37.6	29.1	-8.6
- Violence without Injury	7210	9844	2634	36.5	2480	2330	-150	-6.0	34.4	23.7	-10.7
Sexual Offences	1286	1608	322	25.0	229	251	22	9.6	17.8	15.6	-2.2
- Rape	494	550	56	11.3	71	68	-3	-4.2	14.4	12.4	-2.0
- Rape - Under 16 yrs	150	190	40	26.7	35	31	-4	-11.4	23.3	16.3	-7.0
- Rape - Over 16 yrs	344	360	16	4.7	36	37	1	2.8	10.5	10.3	-0.2
- Other Sexual Offences	792	1058	266	33.6	158	183	25	15.8	19.9	17.3	-2.7
Robbery	536	575	39	7.3	112	117	5	4.5	20.9	20.3	-0.5
- Robbery of business property	48	54	6	12.5	17	26	9	52.9	35.4	48.1	12.7
- Robbery of Personal Property	488	521	33	6.8	95	91	-4	-4.2	19.5	17.5	-2.0
Theft Offences	29466	30941	1475	5.0	5393	4342	-1051	-19.5	18.3	14.0	-4.3
- Burglary	7384	7760	376	5.1	820	503	-317	-38.7	11.1	6.5	-4.6
- Dwelling Burglary	3623	3965	342	9.4	633	370	-263	-41.5	17.5	9.3	-8.1
- Other Burglary	3761	3795	34	0.9	187	133	-54	-28.9	5.0	3.5	-1.5
- Vehicle Offences (incl. Interference)	6494	7615	1121	17.3	363	396	33	9.1	5.6	5.2	-0.4
- Theft from Vehicle	4197	4930	733	17.5	138	208	70	50.7	3.3	4.2	0.9
- Theft of Motor Vehicle	1691	1926	235	13.9	204	159	-45	-22.1	12.1	8.3	-3.8
- Vehicle Interference	606	759	153	25.2	21	29	8	38.1	3.5	3.8	0.4
- Theft	15588	15566	-22	-0.1	4210	3443	-767	-18.2	27.0	22.1	-4.9
- Theft from the Person	809	998	189	23.4	23	36	13	56.5	2.8	3.6	0.8
- Theft of Pedal Cycle	1509	1500	-9	-0.6	58	37	-21	-36.2	3.8	2.5	-1.4
- Shoplifting	5489	5755	266	4.8	3247	2784	-463	-14.3	59.2	48.4	-10.8
- Other Theft	7781	7313	-468	-6.0	882	586	-296	-33.6	11.3	8.0	-3.3
Criminal Damage inc. Arson	8152	8695	543	6.7	1357	1121	-236	-17.4	16.6	12.9	-3.8
- Criminal Damage	7874	8382	508	6.5	1319	1096	-223	-16.9	16.8	13.1	-3.7
- Arson	278	313	35	12.6	38	25	-13	-34.2	13.7	8.0	-5.7
Racial/Religiously Aggravated Offences	534	441	-93	-17.4	185	110	-75	-40.5	34.6	24.9	-9.7
State Based Crime	Offences				Outcomes				Solved Rates %		
Crime Type	2014	2015	# diff.	% diff.	2014	2015	# diff.	% diff.	2014	2015	% pt. diff.
Drug Offences	2325	1648	-677	-29.1	2157	1459	-698	-32.4	92.8	88.5	-4.2
- Trafficking of Drugs	466	382	-84	-18.0	390	272	-118	-30.3	83.7	71.2	-12.5
- Possession of Drugs	1859	1266	-593	-31.9	1767	1187	-580	-32.8	95.1	93.8	-1.3
Possession of Weapons	536	591	55	10.3	448	425	-23	-5.1	83.6	71.9	-11.7
Public Order	2476	3207	731	29.5	1193	958	-235	-19.7	48.2	29.9	-18.3
Miscellaneous Crimes against Society	678	950	272	40.1	360	316	-44	-12.2	53.1	33.3	-19.8

Corporate Services: Performance Summary
Essex Police Performance Summary

Force
Rolling 12 Months to October

Top Level	Offences				Outcomes				Solved Rates %		
Crime Type	2014	2015	# diff.	% diff.	2014	2015	# diff.	% diff.	2014	2015	% pt. diff.
Anti-Social Behaviour (incidents)	53574	53738	164	0.3	-	-	-	-	-	-	-
All Crime (excl. Action (NFIB) Fraud)	99844	105708	5864	5.9	28025	24228	-3797	-13.5	28.1	22.9	-5.1
- State Based Crime	9933	10174	241	2.4	7239	5872	-1367	-18.9	72.9	57.7	-15.2
- Victim Based Crime	89911	95534	5623	6.3	20786	18356	-2430	-11.7	23.1	19.2	-3.9
Victim Based Crime	Offences				Outcomes				Solved Rates %		
Crime Type	2014	2015	# diff.	% diff.	2014	2015	# diff.	% diff.	2014	2015	% pt. diff.
Violence Against the Person	21752	26080	4328	19.9	8260	7760	-500	-6.1	38.0	29.8	-8.2
- Homicide	14	22	8	57.1	10	14	4	40.0	71.4	63.6	-7.8
- Violence with Injury	10102	10860	758	7.5	3961	3570	-391	-9.9	39.2	32.9	-6.3
- Violence without Injury	11636	15198	3562	30.6	4289	4176	-113	-2.6	36.9	27.5	-9.4
Sexual Offences	2037	2751	714	35.1	385	444	59	15.3	18.9	16.1	-2.8
- Rape	765	938	173	22.6	122	128	6	4.9	15.9	13.6	-2.3
- Rape - Under 16 yrs	235	322	87	37.0	66	57	-9	-13.6	28.1	17.7	-10.4
- Rape - Over 16 yrs	530	616	86	16.2	56	71	15	26.8	10.6	11.5	1.0
- Other Sexual Offences	1272	1813	541	42.5	263	316	53	20.2	20.7	17.4	-3.2
Robbery	952	996	44	4.6	191	213	22	11.5	20.1	21.4	1.3
- Robbery of business property	93	111	18	19.4	24	37	13	54.2	25.8	33.3	7.5
- Robbery of Personal Property	859	885	26	3.0	167	176	9	5.4	19.4	19.9	0.4
Theft Offences	51108	51416	308	0.6	9582	7994	-1588	-16.6	18.7	15.5	-3.2
- Burglary	13356	13432	76	0.6	1266	1020	-246	-19.4	9.5	7.6	-1.9
- Dwelling Burglary	7020	7084	64	0.9	931	742	-189	-20.3	13.3	10.5	-2.8
- Other Burglary	6336	6348	12	0.2	335	278	-57	-17.0	5.3	4.4	-0.9
- Vehicle Offences (incl. Interference)	11583	12744	1161	10.0	602	657	55	9.1	5.2	5.2	0.0
- Theft from Vehicle	7832	8241	409	5.2	226	307	81	35.8	2.9	3.7	0.8
- Theft of Motor Vehicle	2852	3175	323	11.3	353	308	-45	-12.7	12.4	9.7	-2.7
- Vehicle Interference	899	1328	429	47.7	23	42	19	82.6	2.6	3.2	0.6
- Theft	26169	25240	-929	-3.6	7714	6317	-1397	-18.1	29.5	25.0	-4.4
- Theft from the Person	1474	1536	62	4.2	40	51	11	27.5	2.7	3.3	0.6
- Theft of Pedal Cycle	2270	2207	-63	-2.8	117	76	-41	-35.0	5.2	3.4	-1.7
- Shoplifting	9497	9506	9	0.1	5958	4981	-977	-16.4	62.7	52.4	-10.3
- Other Theft	12928	11991	-937	-7.2	1599	1209	-390	-24.4	12.4	10.1	-2.3
Criminal Damage inc. Arson	14062	14291	229	1.6	2368	1945	-423	-17.9	16.8	13.6	-3.2
- Criminal Damage	13617	13804	187	1.4	2309	1895	-414	-17.9	17.0	13.7	-3.2
- Arson	445	487	42	9.4	59	50	-9	-15.3	13.3	10.3	-3.0
Racial/Religiously Aggravated Offences	841	802	-39	-4.6	299	237	-62	-20.7	35.6	29.6	-6.0
State Based Crime	Offences				Outcomes				Solved Rates %		
Crime Type	2014	2015	# diff.	% diff.	2014	2015	# diff.	% diff.	2014	2015	% pt. diff.
Drug Offences	3930	3027	-903	-23.0	3740	2854	-886	-23.7	95.2	94.3	-0.9
- Trafficking of Drugs	740	604	-136	-18.4	640	488	-152	-23.8	86.5	80.8	-5.7
- Possession of Drugs	3190	2423	-767	-24.0	3100	2366	-734	-23.7	97.2	97.6	0.5
Possession of Weapons	891	948	57	6.4	765	730	-35	-4.6	85.9	77.0	-8.9
Public Order	3942	4687	745	18.9	2043	1672	-371	-18.2	51.8	35.7	-16.2
Miscellaneous Crimes against Society	1170	1512	342	29.2	691	616	-75	-10.9	59.1	40.7	-18.3

Corporate Services: Performance Summary
Essex Police Performance Summary

Chelmsford
Cumulative Year to October

Top Level	Offences				Outcomes				Solved Rates %		
Crime Type	2014	2015	# diff.	% diff.	2014	2015	# diff.	% diff.	2014	2015	% pt. diff.
Anti-Social Behaviour (incidents)	2808	2603	-205	-7.3	-	-	-	-	-	-	-
All Crime (excl. Action (NFIB) Fraud)	5253	5637	384	7.3	1587	1354	-233	-14.7	30.2	24.0	-6.2
- State Based Crime	596	610	14	2.3	413	310	-103	-24.9	69.3	50.8	-18.5
- Victim Based Crime	4657	5027	370	7.9	1174	1044	-130	-11.1	25.2	20.8	-4.4
Victim Based Crime	Offences				Outcomes				Solved Rates %		
Crime Type	2014	2015	# diff.	% diff.	2014	2015	# diff.	% diff.	2014	2015	% pt. diff.
Violence Against the Person	1186	1486	300	25.3	513	426	-87	-17.0	43.3	28.7	-14.6
- Homicide	2	1	-1	-50.0	1	1	0	0.0	50.0	100.0	50.0
- Violence with Injury	551	626	75	13.6	248	195	-53	-21.4	45.0	31.2	-13.9
- Violence without Injury	633	859	226	35.7	264	230	-34	-12.9	41.7	26.8	-14.9
Sexual Offences	111	130	19	17.1	20	21	1	5.0	18.0	16.2	-1.9
- Rape	44	49	5	11.4	8	9	1	12.5	18.2	18.4	0.2
- Rape - Under 16 yrs	11	10	-1	-9.1	2	3	1	50.0	18.2	30.0	11.8
- Rape - Over 16 yrs	33	39	6	18.2	6	6	0	0.0	18.2	15.4	-2.8
- Other Sexual Offences	67	81	14	20.9	12	12	0	0.0	17.9	14.8	-3.1
Robbery	45	29	-16	-35.6	12	7	-5	-41.7	26.7	24.1	-2.5
- Robbery of business property	5	2	-3	-60.0	1	0	-1	-100.0	20.0	0.0	-20.0
- Robbery of Personal Property	40	27	-13	-32.5	11	7	-4	-36.4	27.5	25.9	-1.6
Theft Offences	2674	2704	30	1.1	508	483	-25	-4.9	19.0	17.9	-1.1
- Burglary	666	531	-135	-20.3	63	26	-37	-58.7	9.5	4.9	-4.6
- Dwelling Burglary	258	240	-18	-7.0	39	18	-21	-53.8	15.1	7.5	-7.6
- Other Burglary	408	291	-117	-28.7	24	8	-16	-66.7	5.9	2.7	-3.1
- Vehicle Offences (incl. Interference)	402	485	83	20.6	15	13	-2	-13.3	3.7	2.7	-1.1
- Theft from Vehicle	263	278	15	5.7	2	3	1	50.0	0.8	1.1	0.3
- Theft of Motor Vehicle	111	152	41	36.9	13	10	-3	-23.1	11.7	6.6	-5.1
- Vehicle Interference	28	55	27	96.4	0	0	0	-	0.0	0.0	0.0
- Theft	1606	1688	82	5.1	430	444	14	3.3	26.8	26.3	-0.5
- Theft from the Person	128	123	-5	-3.9	3	7	4	133.3	2.3	5.7	3.3
- Theft of Pedal Cycle	227	217	-10	-4.4	12	7	-5	-41.7	5.3	3.2	-2.1
- Shoplifting	496	668	172	34.7	322	390	68	21.1	64.9	58.4	-6.5
- Other Theft	755	680	-75	-9.9	93	40	-53	-57.0	12.3	5.9	-6.4
Criminal Damage inc. Arson	641	678	37	5.8	121	107	-14	-11.6	18.9	15.8	-3.1
- Criminal Damage	622	645	23	3.7	115	105	-10	-8.7	18.5	16.3	-2.2
- Arson	19	33	14	73.7	6	2	-4	-66.7	31.6	6.1	-25.5
Racial/Religiously Aggravated Offences	39	30	-9	-23.1	16	7	-9	-56.3	41.0	23.3	-17.7
State Based Crime	Offences				Outcomes				Solved Rates %		
Crime Type	2014	2015	# diff.	% diff.	2014	2015	# diff.	% diff.	2014	2015	% pt. diff.
Drug Offences	272	209	-63	-23.2	245	193	-52	-21.2	90.1	92.3	2.3
- Trafficking of Drugs	33	32	-1	-3.0	25	26	1	4.0	75.8	81.3	5.5
- Possession of Drugs	239	177	-62	-25.9	220	167	-53	-24.1	92.1	94.4	2.3
Possession of Weapons	31	42	11	35.5	28	26	-2	-7.1	90.3	61.9	-28.4
Public Order	215	259	44	20.5	104	61	-43	-41.3	48.4	23.6	-24.8
Miscellaneous Crimes against Society	78	100	22	28.2	36	30	-6	-16.7	46.2	30.0	-16.2

Corporate Services: Performance Summary
Essex Police Performance Summary

Chelmsford
Rolling 12 Months to October

Top Level	Offences				Outcomes				Solved Rates %		
Crime Type	2014	2015	# diff.	% diff.	2014	2015	# diff.	% diff.	2014	2015	% pt. diff.
Anti-Social Behaviour (incidents)	4210	4324	114	2.7	-	-	-	-	-	-	-
All Crime (excl. Action (NFIB) Fraud)	8876	9274	398	4.5	2762	2451	-311	-11.3	31.1	26.4	-4.7
- State Based Crime	987	999	12	1.2	700	622	-78	-11.1	70.9	62.3	-8.7
- Victim Based Crime	7889	8275	386	4.9	2062	1829	-233	-11.3	26.1	22.1	-4.0
Victim Based Crime	Offences				Outcomes				Solved Rates %		
Crime Type	2014	2015	# diff.	% diff.	2014	2015	# diff.	% diff.	2014	2015	% pt. diff.
Violence Against the Person	1909	2363	454	23.8	840	777	-63	-7.5	44.0	32.9	-11.1
- Homicide	2	2	0	0.0	2	2	0	0.0	100.0	100.0	0.0
- Violence with Injury	896	1029	133	14.8	415	361	-54	-13.0	46.3	35.1	-11.2
- Violence without Injury	1011	1332	321	31.8	423	414	-9	-2.1	41.8	31.1	-10.8
Sexual Offences	169	231	62	36.7	30	30	0	0.0	17.8	13.0	-4.8
- Rape	68	87	19	27.9	11	11	0	0.0	16.2	12.6	-3.5
- Rape - Under 16 yrs	18	21	3	16.7	5	4	-1	-20.0	27.8	19.0	-8.7
- Rape - Over 16 yrs	50	66	16	32.0	6	7	1	16.7	12.0	10.6	-1.4
- Other Sexual Offences	101	144	43	42.6	19	19	0	0.0	18.8	13.2	-5.6
Robbery	74	50	-24	-32.4	15	16	1	6.7	20.3	32.0	11.7
- Robbery of business property	9	5	-4	-44.4	1	1	0	0.0	11.1	20.0	8.9
- Robbery of Personal Property	65	45	-20	-30.8	14	15	1	7.1	21.5	33.3	11.8
Theft Offences	4578	4472	-106	-2.3	951	810	-141	-14.8	20.8	18.1	-2.7
- Burglary	1170	970	-200	-17.1	96	53	-43	-44.8	8.2	5.5	-2.7
- Dwelling Burglary	490	448	-42	-8.6	52	33	-19	-36.5	10.6	7.4	-3.2
- Other Burglary	680	522	-158	-23.2	44	20	-24	-54.5	6.5	3.8	-2.6
- Vehicle Offences (incl. Interference)	702	836	134	19.1	33	27	-6	-18.2	4.7	3.2	-1.5
- Theft from Vehicle	452	523	71	15.7	8	7	-1	-12.5	1.8	1.3	-0.4
- Theft of Motor Vehicle	204	220	16	7.8	24	20	-4	-16.7	11.8	9.1	-2.7
- Vehicle Interference	46	93	47	102.2	1	0	-1	-100.0	2.2	0.0	-2.2
- Theft	2706	2666	-40	-1.5	822	730	-92	-11.2	30.4	27.4	-3.0
- Theft from the Person	228	181	-47	-20.6	6	10	4	66.7	2.6	5.5	2.9
- Theft of Pedal Cycle	339	340	1	0.3	23	10	-13	-56.5	6.8	2.9	-3.8
- Shoplifting	903	1042	139	15.4	623	612	-11	-1.8	69.0	58.7	-10.3
- Other Theft	1236	1103	-133	-10.8	170	98	-72	-42.4	13.8	8.9	-4.9
Criminal Damage inc. Arson	1159	1159	0	0.0	226	196	-30	-13.3	19.5	16.9	-2.6
- Criminal Damage	1125	1110	-15	-1.3	218	191	-27	-12.4	19.4	17.2	-2.2
- Arson	34	49	15	44.1	8	5	-3	-37.5	23.5	10.2	-13.3
Racial/Religiously Aggravated Offences	62	65	3	4.8	24	18	-6	-25.0	38.7	27.7	-11.0
State Based Crime	Offences				Outcomes				Solved Rates %		
Crime Type	2014	2015	# diff.	% diff.	2014	2015	# diff.	% diff.	2014	2015	% pt. diff.
Drug Offences	423	377	-46	-10.9	403	364	-39	-9.7	95.3	96.6	1.3
- Trafficking of Drugs	51	52	1	2.0	41	39	-2	-4.9	80.4	75.0	-5.4
- Possession of Drugs	372	325	-47	-12.6	362	325	-37	-10.2	97.3	100.0	2.7
Possession of Weapons	53	64	11	20.8	44	45	1	2.3	83.0	70.3	-12.7
Public Order	369	401	32	8.7	181	136	-45	-24.9	49.1	33.9	-15.1
Miscellaneous Crimes against Society	142	157	15	10.6	72	77	5	6.9	50.7	49.0	-1.7

Corporate Services: Performance Summary
Essex Police Performance Summary

Braintree
Cumulative Year to October

Top Level	Offences				Outcomes				Solved Rates %		
Crime Type	2014	2015	# diff.	% diff.	2014	2015	# diff.	% diff.	2014	2015	% pt. diff.
Anti-Social Behaviour (incidents)	2388	2223	-165	-6.9	-	-	-	-	-	-	-
All Crime (excl. Action (NFIB) Fraud)	3470	4095	625	18.0	975	778	-197	-20.2	28.1	19.0	-9.1
- State Based Crime	311	366	55	17.7	222	177	-45	-20.3	71.4	48.4	-23.0
- Victim Based Crime	3159	3729	570	18.0	753	601	-152	-20.2	23.8	16.1	-7.7
Victim Based Crime	Offences				Outcomes				Solved Rates %		
Crime Type	2014	2015	# diff.	% diff.	2014	2015	# diff.	% diff.	2014	2015	% pt. diff.
Violence Against the Person	784	1105	321	40.9	323	310	-13	-4.0	41.2	28.1	-13.1
- Homicide	1	1	0	0.0	1	0	-1	-100.0	100.0	0.0	-100.0
- Violence with Injury	358	435	77	21.5	152	144	-8	-5.3	42.5	33.1	-9.4
- Violence without Injury	425	669	244	57.4	170	166	-4	-2.4	40.0	24.8	-15.2
Sexual Offences	69	191	122	176.8	10	26	16	160.0	14.5	13.6	-0.9
- Rape	27	39	12	44.4	4	9	5	125.0	14.8	23.1	8.3
- Rape - Under 16 yrs	9	20	11	122.2	4	8	4	100.0	44.4	40.0	-4.4
- Rape - Over 16 yrs	18	19	1	5.6	0	1	1	-	0.0	5.3	5.3
- Other Sexual Offences	42	152	110	261.9	6	17	11	183.3	14.3	11.2	-3.1
Robbery	18	17	-1	-5.6	10	6	-4	-40.0	55.6	35.3	-20.3
- Robbery of business property	3	5	2	66.7	4	4	0	0.0	133.3	80.0	-53.3
- Robbery of Personal Property	15	12	-3	-20.0	6	2	-4	-66.7	40.0	16.7	-23.3
Theft Offences	1732	1789	57	3.3	304	180	-124	-40.8	17.6	10.1	-7.5
- Burglary	486	522	36	7.4	63	18	-45	-71.4	13.0	3.4	-9.5
- Dwelling Burglary	157	208	51	32.5	57	12	-45	-78.9	36.3	5.8	-30.5
- Other Burglary	329	314	-15	-4.6	6	6	0	0.0	1.8	1.9	0.1
- Vehicle Offences (incl. Interference)	338	364	26	7.7	12	10	-2	-16.7	3.6	2.7	-0.8
- Theft from Vehicle	250	271	21	8.4	4	6	2	50.0	1.6	2.2	0.6
- Theft of Motor Vehicle	63	55	-8	-12.7	8	4	-4	-50.0	12.7	7.3	-5.4
- Vehicle Interference	25	38	13	52.0	0	0	0	-	0.0	0.0	0.0
- Theft	908	903	-5	-0.6	229	152	-77	-33.6	25.2	16.8	-8.4
- Theft from the Person	42	52	10	23.8	1	0	-1	-100.0	2.4	0.0	-2.4
- Theft of Pedal Cycle	79	109	30	38.0	1	3	2	200.0	1.3	2.8	1.5
- Shoplifting	259	244	-15	-5.8	150	110	-40	-26.7	57.9	45.1	-12.8
- Other Theft	528	498	-30	-5.7	77	39	-38	-49.4	14.6	7.8	-6.8
Criminal Damage inc. Arson	556	627	71	12.8	106	79	-27	-25.5	19.1	12.6	-6.5
- Criminal Damage	535	607	72	13.5	104	76	-28	-26.9	19.4	12.5	-6.9
- Arson	21	20	-1	-4.8	2	3	1	50.0	9.5	15.0	5.5
Racial/Religiously Aggravated Offences	16	17	1	6.3	4	4	0	0.0	25.0	23.5	-1.5
State Based Crime	Offences				Outcomes				Solved Rates %		
Crime Type	2014	2015	# diff.	% diff.	2014	2015	# diff.	% diff.	2014	2015	% pt. diff.
Drug Offences	137	94	-43	-31.4	121	81	-40	-33.1	88.3	86.2	-2.2
- Trafficking of Drugs	15	14	-1	-6.7	13	6	-7	-53.8	86.7	42.9	-43.8
- Possession of Drugs	122	80	-42	-34.4	108	75	-33	-30.6	88.5	93.8	5.2
Possession of Weapons	13	23	10	76.9	11	11	0	0.0	84.6	47.8	-36.8
Public Order	128	209	81	63.3	63	75	12	19.0	49.2	35.9	-13.3
Miscellaneous Crimes against Society	33	40	7	21.2	27	10	-17	-63.0	81.8	25.0	-56.8

Corporate Services: Performance Summary
Essex Police Performance Summary

Braintree

Rolling 12 Months to October

Top Level	Offences				Outcomes				Solved Rates %		
Crime Type	2014	2015	# diff.	% diff.	2014	2015	# diff.	% diff.	2014	2015	% pt. diff.
Anti-Social Behaviour (incidents)	3608	3612	4	0.1	-	-	-	-	-	-	-
All Crime (excl. Action (NFIB) Fraud)	5799	6492	693	12.0	1573	1472	-101	-6.4	27.1	22.7	-4.5
- State Based Crime	469	589	120	25.6	341	339	-2	-0.6	72.7	57.6	-15.2
- Victim Based Crime	5330	5903	573	10.8	1232	1133	-99	-8.0	23.1	19.2	-3.9
Victim Based Crime	Offences				Outcomes				Solved Rates %		
Crime Type	2014	2015	# diff.	% diff.	2014	2015	# diff.	% diff.	2014	2015	% pt. diff.
Violence Against the Person	1267	1705	438	34.6	562	600	38	6.8	44.4	35.2	-9.2
- Homicide	1	1	0	0.0	1	0	-1	-100.0	100.0	0.0	-100.0
- Violence with Injury	567	704	137	24.2	248	269	21	8.5	43.7	38.2	-5.5
- Violence without Injury	699	1000	301	43.1	313	331	18	5.8	44.8	33.1	-11.7
Sexual Offences	112	268	156	139.3	15	39	24	160.0	13.4	14.6	1.2
- Rape	41	65	24	58.5	6	13	7	116.7	14.6	20.0	5.4
- Rape - Under 16 yrs	14	30	16	114.3	5	12	7	140.0	35.7	40.0	4.3
- Rape - Over 16 yrs	27	35	8	29.6	1	1	0	0.0	3.7	2.9	-0.8
- Other Sexual Offences	71	203	132	185.9	9	26	17	188.9	12.7	12.8	0.1
Robbery	26	32	6	23.1	11	8	-3	-27.3	42.3	25.0	-17.3
- Robbery of business property	5	9	4	80.0	4	5	1	25.0	80.0	55.6	-24.4
- Robbery of Personal Property	21	23	2	9.5	7	3	-4	-57.1	33.3	13.0	-20.3
Theft Offences	3002	2894	-108	-3.6	474	350	-124	-26.2	15.8	12.1	-3.7
- Burglary	873	797	-76	-8.7	85	33	-52	-61.2	9.7	4.1	-5.6
- Dwelling Burglary	325	312	-13	-4.0	73	24	-49	-67.1	22.5	7.7	-14.8
- Other Burglary	548	485	-63	-11.5	12	9	-3	-25.0	2.2	1.9	-0.3
- Vehicle Offences (incl. Interference)	654	589	-65	-9.9	24	19	-5	-20.8	3.7	3.2	-0.4
- Theft from Vehicle	466	431	-35	-7.5	6	10	4	66.7	1.3	2.3	1.0
- Theft of Motor Vehicle	132	96	-36	-27.3	18	8	-10	-55.6	13.6	8.3	-5.3
- Vehicle Interference	56	62	6	10.7	0	1	1	-	0.0	1.6	1.6
- Theft	1475	1508	33	2.2	365	298	-67	-18.4	24.7	19.8	-5.0
- Theft from the Person	85	86	1	1.2	1	3	2	200.0	1.2	3.5	2.3
- Theft of Pedal Cycle	104	162	58	55.8	3	7	4	133.3	2.9	4.3	1.4
- Shoplifting	427	426	-1	-0.2	241	205	-36	-14.9	56.4	48.1	-8.3
- Other Theft	859	834	-25	-2.9	120	83	-37	-30.8	14.0	10.0	-4.0
Criminal Damage inc. Arson	923	1004	81	8.8	170	136	-34	-20.0	18.4	13.5	-4.9
- Criminal Damage	890	975	85	9.6	167	130	-37	-22.2	18.8	13.3	-5.4
- Arson	33	29	-4	-12.1	3	6	3	100.0	9.1	20.7	11.6
Racial/Religiously Aggravated Offences	25	28	3	12.0	10	12	2	20.0	40.0	42.9	2.9
State Based Crime	Offences				Outcomes				Solved Rates %		
Crime Type	2014	2015	# diff.	% diff.	2014	2015	# diff.	% diff.	2014	2015	% pt. diff.
Drug Offences	207	179	-28	-13.5	200	174	-26	-13.0	96.6	97.2	0.6
- Trafficking of Drugs	21	22	1	4.8	18	12	-6	-33.3	85.7	54.5	-31.2
- Possession of Drugs	186	157	-29	-15.6	182	162	-20	-11.0	97.8	103.2	5.3
Possession of Weapons	19	32	13	68.4	15	18	3	20.0	78.9	56.3	-22.7
Public Order	186	301	115	61.8	88	119	31	35.2	47.3	39.5	-7.8
Miscellaneous Crimes against Society	57	77	20	35.1	38	28	-10	-26.3	66.7	36.4	-30.3

Corporate Services: Performance Summary
Essex Police Performance Summary

Uttlesford
Cumulative Year to October

Top Level	Offences				Outcomes				Solved Rates %		
Crime Type	2014	2015	# diff.	% diff.	2014	2015	# diff.	% diff.	2014	2015	% pt. diff.
Anti-Social Behaviour (incidents)	879	762	-117	-13.3	-	-	-	-	-	-	-
All Crime (excl. Action (NFIB) Fraud)	1580	1413	-167	-10.6	327	255	-72	-22.0	20.7	18.0	-2.6
- State Based Crime	107	108	1	0.9	76	60	-16	-21.1	71.0	55.6	-15.5
- Victim Based Crime	1473	1305	-168	-11.4	251	195	-56	-22.3	17.0	14.9	-2.1
Victim Based Crime	Offences				Outcomes				Solved Rates %		
Crime Type	2014	2015	# diff.	% diff.	2014	2015	# diff.	% diff.	2014	2015	% pt. diff.
Violence Against the Person	285	318	33	11.6	90	99	9	10.0	31.6	31.1	-0.4
- Homicide	0	3	3	-	0	1	1	-	-	33.3	-
- Violence with Injury	130	136	6	4.6	44	56	12	27.3	33.8	41.2	7.3
- Violence without Injury	155	179	24	15.5	46	42	-4	-8.7	29.7	23.5	-6.2
Sexual Offences	39	34	-5	-12.8	11	8	-3	-27.3	28.2	23.5	-4.7
- Rape	14	17	3	21.4	5	2	-3	-60.0	35.7	11.8	-23.9
- Rape - Under 16 yrs	5	9	4	80.0	3	0	-3	-100.0	60.0	0.0	-60.0
- Rape - Over 16 yrs	9	8	-1	-11.1	2	2	0	0.0	22.2	25.0	2.8
- Other Sexual Offences	25	17	-8	-32.0	6	6	0	0.0	24.0	35.3	11.3
Robbery	3	5	2	66.7	0	3	3	-	0.0	60.0	60.0
- Robbery of business property	1	1	0	0.0	0	0	0	-	0.0	0.0	0.0
- Robbery of Personal Property	2	4	2	100.0	0	3	3	-	0.0	75.0	75.0
Theft Offences	890	748	-142	-16.0	116	64	-52	-44.8	13.0	8.6	-4.5
- Burglary	305	253	-52	-17.0	32	22	-10	-31.3	10.5	8.7	-1.8
- Dwelling Burglary	72	92	20	27.8	25	11	-14	-56.0	34.7	12.0	-22.8
- Other Burglary	233	161	-72	-30.9	7	11	4	57.1	3.0	6.8	3.8
- Vehicle Offences (incl. Interference)	201	191	-10	-5.0	7	11	4	57.1	3.5	5.8	2.3
- Theft from Vehicle	136	138	2	1.5	0	7	7	-	0.0	5.1	5.1
- Theft of Motor Vehicle	40	29	-11	-27.5	7	4	-3	-42.9	17.5	13.8	-3.7
- Vehicle Interference	25	24	-1	-4.0	0	0	0	-	0.0	0.0	0.0
- Theft	384	304	-80	-20.8	77	31	-46	-59.7	20.1	10.2	-9.9
- Theft from the Person	6	13	7	116.7	1	1	0	0.0	16.7	7.7	-9.0
- Theft of Pedal Cycle	17	13	-4	-23.5	0	1	1	-	0.0	7.7	7.7
- Shoplifting	76	48	-28	-36.8	40	16	-24	-60.0	52.6	33.3	-19.3
- Other Theft	285	230	-55	-19.3	36	13	-23	-63.9	12.6	5.7	-7.0
Criminal Damage inc. Arson	256	200	-56	-21.9	34	21	-13	-38.2	13.3	10.5	-2.8
- Criminal Damage	247	187	-60	-24.3	32	21	-11	-34.4	13.0	11.2	-1.7
- Arson	9	13	4	44.4	2	0	-2	-100.0	22.2	0.0	-22.2
Racial/Religiously Aggravated Offences	4	5	1	25.0	2	1	-1	-50.0	50.0	20.0	-30.0
State Based Crime	Offences				Outcomes				Solved Rates %		
Crime Type	2014	2015	# diff.	% diff.	2014	2015	# diff.	% diff.	2014	2015	% pt. diff.
Drug Offences	39	30	-9	-23.1	35	28	-7	-20.0	89.7	93.3	3.6
- Trafficking of Drugs	7	6	-1	-14.3	3	3	0	0.0	42.9	50.0	7.1
- Possession of Drugs	32	24	-8	-25.0	32	25	-7	-21.9	100.0	104.2	4.2
Possession of Weapons	9	7	-2	-22.2	4	6	2	50.0	44.4	85.7	41.3
Public Order	34	56	22	64.7	25	19	-6	-24.0	73.5	33.9	-39.6
Miscellaneous Crimes against Society	25	15	-10	-40.0	12	7	-5	-41.7	48.0	46.7	-1.3

Corporate Services: Performance Summary
Essex Police Performance Summary

Uttlesford
Rolling 12 Months to October

Top Level	Offences				Outcomes				Solved Rates %		
Crime Type	2014	2015	# diff.	% diff.	2014	2015	# diff.	% diff.	2014	2015	% pt. diff.
Anti-Social Behaviour (incidents)	1280	1254	-26	-2.0	-	-	-	-	-	-	-
All Crime (excl. Action (NFIB) Fraud)	2665	2441	-224	-8.4	536	484	-52	-9.7	20.1	19.8	-0.3
- State Based Crime	163	175	12	7.4	114	101	-13	-11.4	69.9	57.7	-12.2
- Victim Based Crime	2502	2266	-236	-9.4	422	383	-39	-9.2	16.9	16.9	0.0
Victim Based Crime	Offences				Outcomes				Solved Rates %		
Crime Type	2014	2015	# diff.	% diff.	2014	2015	# diff.	% diff.	2014	2015	% pt. diff.
Violence Against the Person	430	519	89	20.7	161	196	35	21.7	37.4	37.8	0.3
- Homicide	0	3	3	-	0	1	1	-	-	33.3	-
- Violence with Injury	200	231	31	15.5	80	110	30	37.5	40.0	47.6	7.6
- Violence without Injury	230	285	55	23.9	81	85	4	4.9	35.2	29.8	-5.4
Sexual Offences	56	62	6	10.7	18	15	-3	-16.7	32.1	24.2	-7.9
- Rape	21	26	5	23.8	5	4	-1	-20.0	23.8	15.4	-8.4
- Rape - Under 16 yrs	8	14	6	75.0	3	1	-2	-66.7	37.5	7.1	-30.4
- Rape - Over 16 yrs	13	12	-1	-7.7	2	3	1	50.0	15.4	25.0	9.6
- Other Sexual Offences	35	36	1	2.9	13	11	-2	-15.4	37.1	30.6	-6.6
Robbery	8	9	1	12.5	3	3	0	0.0	37.5	33.3	-4.2
- Robbery of business property	1	1	0	0.0	2	0	-2	-100.0	200.0	0.0	-200.0
- Robbery of Personal Property	7	8	1	14.3	1	3	2	200.0	14.3	37.5	23.2
Theft Offences	1602	1321	-281	-17.5	183	122	-61	-33.3	11.4	9.2	-2.2
- Burglary	565	478	-87	-15.4	49	41	-8	-16.3	8.7	8.6	-0.1
- Dwelling Burglary	185	149	-36	-19.5	40	27	-13	-32.5	21.6	18.1	-3.5
- Other Burglary	380	329	-51	-13.4	9	14	5	55.6	2.4	4.3	1.9
- Vehicle Offences (incl. Interference)	393	342	-51	-13.0	11	16	5	45.5	2.8	4.7	1.9
- Theft from Vehicle	294	253	-41	-13.9	0	7	7	-	0.0	2.8	2.8
- Theft of Motor Vehicle	61	51	-10	-16.4	11	9	-2	-18.2	18.0	17.6	-0.4
- Vehicle Interference	38	38	0	0.0	0	0	0	-	0.0	0.0	0.0
- Theft	644	501	-143	-22.2	123	65	-58	-47.2	19.1	13.0	-6.1
- Theft from the Person	13	19	6	46.2	1	1	0	0.0	7.7	5.3	-2.4
- Theft of Pedal Cycle	27	20	-7	-25.9	1	1	0	0.0	3.7	5.0	1.3
- Shoplifting	128	91	-37	-28.9	60	34	-26	-43.3	46.9	37.4	-9.5
- Other Theft	476	371	-105	-22.1	61	29	-32	-52.5	12.8	7.8	-5.0
Criminal Damage inc. Arson	406	355	-51	-12.6	57	47	-10	-17.5	14.0	13.2	-0.8
- Criminal Damage	392	339	-53	-13.5	55	47	-8	-14.5	14.0	13.9	-0.2
- Arson	14	16	2	14.3	2	0	-2	-100.0	14.3	0.0	-14.3
Racial/Religiously Aggravated Offences	10	11	1	10.0	4	2	-2	-50.0	40.0	18.2	-21.8
State Based Crime	Offences				Outcomes				Solved Rates %		
Crime Type	2014	2015	# diff.	% diff.	2014	2015	# diff.	% diff.	2014	2015	% pt. diff.
Drug Offences	58	52	-6	-10.3	51	52	1	2.0	87.9	100.0	12.1
- Trafficking of Drugs	8	10	2	25.0	4	7	3	75.0	50.0	70.0	20.0
- Possession of Drugs	50	42	-8	-16.0	47	45	-2	-4.3	94.0	107.1	13.1
Possession of Weapons	9	12	3	33.3	4	10	6	150.0	44.4	83.3	38.9
Public Order	62	81	19	30.6	43	28	-15	-34.9	69.4	34.6	-34.8
Miscellaneous Crimes against Society	34	30	-4	-11.8	16	11	-5	-31.3	47.1	36.7	-10.4

Corporate Services: Performance Summary

Essex Police Performance Summary

Maldon

Cumulative Year to October

Top Level	Offences				Outcomes				Solved Rates %		
Crime Type	2014	2015	# diff.	% diff.	2014	2015	# diff.	% diff.	2014	2015	% pt. diff.
Anti-Social Behaviour (incidents)	737	706	-31	-4.2	-	-	-	-	-	-	-
All Crime (excl. Action (NFIB) Fraud)	1413	1385	-28	-2.0	305	226	-79	-25.9	21.6	16.3	-5.3
- State Based Crime	108	130	22	20.4	74	67	-7	-9.5	68.5	51.5	-17.0
- Victim Based Crime	1305	1255	-50	-3.8	231	159	-72	-31.2	17.7	12.7	-5.0
Victim Based Crime	Offences				Outcomes				Solved Rates %		
Crime Type	2014	2015	# diff.	% diff.	2014	2015	# diff.	% diff.	2014	2015	% pt. diff.
Violence Against the Person	314	385	71	22.6	125	106	-19	-15.2	39.8	27.5	-12.3
- Homicide	0	1	1	-	0	1	1	-	-	100.0	-
- Violence with Injury	139	160	21	15.1	60	57	-3	-5.0	43.2	35.6	-7.5
- Violence without Injury	175	224	49	28.0	65	48	-17	-26.2	37.1	21.4	-15.7
Sexual Offences	27	45	18	66.7	9	5	-4	-44.4	33.3	11.1	-22.2
- Rape	13	27	14	107.7	4	0	-4	-100.0	30.8	0.0	-30.8
- Rape - Under 16 yrs	9	20	11	122.2	1	0	-1	-100.0	11.1	0.0	-11.1
- Rape - Over 16 yrs	4	7	3	75.0	3	0	-3	-100.0	75.0	0.0	-75.0
- Other Sexual Offences	14	18	4	28.6	5	5	0	0.0	35.7	27.8	-7.9
Robbery	6	7	1	16.7	1	2	1	100.0	16.7	28.6	11.9
- Robbery of business property	0	2	2	-	0	0	0	-	-	0.0	-
- Robbery of Personal Property	6	5	-1	-16.7	1	2	1	100.0	16.7	40.0	23.3
Theft Offences	764	631	-133	-17.4	71	31	-40	-56.3	9.3	4.9	-4.4
- Burglary	185	213	28	15.1	17	1	-16	-94.1	9.2	0.5	-8.7
- Dwelling Burglary	40	69	29	72.5	16	1	-15	-93.8	40.0	1.4	-38.6
- Other Burglary	145	144	-1	-0.7	1	0	-1	-100.0	0.7	0.0	-0.7
- Vehicle Offences (incl. Interference)	243	154	-89	-36.6	8	5	-3	-37.5	3.3	3.2	0.0
- Theft from Vehicle	164	106	-58	-35.4	4	2	-2	-50.0	2.4	1.9	-0.6
- Theft of Motor Vehicle	57	30	-27	-47.4	4	3	-1	-25.0	7.0	10.0	3.0
- Vehicle Interference	22	18	-4	-18.2	0	0	0	-	0.0	0.0	0.0
- Theft	336	264	-72	-21.4	46	25	-21	-45.7	13.7	9.5	-4.2
- Theft from the Person	25	25	0	0.0	1	0	-1	-100.0	4.0	0.0	-4.0
- Theft of Pedal Cycle	22	9	-13	-59.1	0	0	0	-	0.0	0.0	0.0
- Shoplifting	70	40	-30	-42.9	34	12	-22	-64.7	48.6	30.0	-18.6
- Other Theft	219	190	-29	-13.2	11	13	2	18.2	5.0	6.8	1.8
Criminal Damage inc. Arson	194	187	-7	-3.6	25	15	-10	-40.0	12.9	8.0	-4.9
- Criminal Damage	191	181	-10	-5.2	22	14	-8	-36.4	11.5	7.7	-3.8
- Arson	3	6	3	100.0	3	1	-2	-66.7	100.0	16.7	-83.3
Racial/Religiously Aggravated Offences	4	5	1	25.0	2	1	-1	-50.0	50.0	20.0	-30.0
State Based Crime	Offences				Outcomes				Solved Rates %		
Crime Type	2014	2015	# diff.	% diff.	2014	2015	# diff.	% diff.	2014	2015	% pt. diff.
Drug Offences	41	39	-2	-4.9	35	33	-2	-5.7	85.4	84.6	-0.8
- Trafficking of Drugs	10	10	0	0.0	7	7	0	0.0	70.0	70.0	0.0
- Possession of Drugs	31	29	-2	-6.5	28	26	-2	-7.1	90.3	89.7	-0.7
Possession of Weapons	7	8	1	14.3	6	5	-1	-16.7	85.7	62.5	-23.2
Public Order	48	67	19	39.6	27	23	-4	-14.8	56.3	34.3	-21.9
Miscellaneous Crimes against Society	12	16	4	33.3	6	6	0	0.0	50.0	37.5	-12.5

Corporate Services: Performance Summary
Essex Police Performance Summary

Maldon

Rolling 12 Months to October

Top Level	Offences				Outcomes				Solved Rates %		
Crime Type	2014	2015	# diff.	% diff.	2014	2015	# diff.	% diff.	2014	2015	% pt. diff.
Anti-Social Behaviour (incidents)	1138	1106	-32	-2.8	-	-	-	-	-	-	-
All Crime (excl. Action (NFIB) Fraud)	2345	2283	-62	-2.6	514	433	-81	-15.8	21.9	19.0	-3.0
- State Based Crime	168	204	36	21.4	116	116	0	0.0	69.0	56.9	-12.2
- Victim Based Crime	2177	2079	-98	-4.5	398	317	-81	-20.4	18.3	15.2	-3.0
Victim Based Crime	Offences				Outcomes				Solved Rates %		
Crime Type	2014	2015	# diff.	% diff.	2014	2015	# diff.	% diff.	2014	2015	% pt. diff.
Violence Against the Person	481	614	133	27.7	198	180	-18	-9.1	41.2	29.3	-11.8
- Homicide	1	1	0	0.0	0	1	1	-	0.0	100.0	100.0
- Violence with Injury	206	262	56	27.2	88	94	6	6.8	42.7	35.9	-6.8
- Violence without Injury	274	351	77	28.1	110	85	-25	-22.7	40.1	24.2	-15.9
Sexual Offences	41	72	31	75.6	10	11	1	10.0	24.4	15.3	-9.1
- Rape	18	38	20	111.1	4	1	-3	-75.0	22.2	2.6	-19.6
- Rape - Under 16 yrs	11	22	11	100.0	1	1	0	0.0	9.1	4.5	-4.5
- Rape - Over 16 yrs	7	16	9	128.6	3	0	-3	-100.0	42.9	0.0	-42.9
- Other Sexual Offences	23	34	11	47.8	6	10	4	66.7	26.1	29.4	3.3
Robbery	11	15	4	36.4	1	10	9	900.0	9.1	66.7	57.6
- Robbery of business property	2	3	1	50.0	0	0	0	-	0.0	0.0	0.0
- Robbery of Personal Property	9	12	3	33.3	1	10	9	900.0	11.1	83.3	72.2
Theft Offences	1283	1065	-218	-17.0	142	80	-62	-43.7	11.1	7.5	-3.6
- Burglary	316	347	31	9.8	21	6	-15	-71.4	6.6	1.7	-4.9
- Dwelling Burglary	88	95	7	8.0	18	3	-15	-83.3	20.5	3.2	-17.3
- Other Burglary	228	252	24	10.5	3	3	0	0.0	1.3	1.2	-0.1
- Vehicle Offences (incl. Interference)	390	279	-111	-28.5	27	13	-14	-51.9	6.9	4.7	-2.3
- Theft from Vehicle	259	181	-78	-30.1	21	8	-13	-61.9	8.1	4.4	-3.7
- Theft of Motor Vehicle	103	64	-39	-37.9	6	5	-1	-16.7	5.8	7.8	2.0
- Vehicle Interference	28	34	6	21.4	0	0	0	-	0.0	0.0	0.0
- Theft	577	439	-138	-23.9	94	61	-33	-35.1	16.3	13.9	-2.4
- Theft from the Person	35	34	-1	-2.9	1	0	-1	-100.0	2.9	0.0	-2.9
- Theft of Pedal Cycle	34	18	-16	-47.1	0	0	0	-	0.0	0.0	0.0
- Shoplifting	115	81	-34	-29.6	64	34	-30	-46.9	55.7	42.0	-13.7
- Other Theft	393	306	-87	-22.1	29	27	-2	-6.9	7.4	8.8	1.4
Criminal Damage inc. Arson	361	313	-48	-13.3	47	36	-11	-23.4	13.0	11.5	-1.5
- Criminal Damage	353	301	-52	-14.7	44	34	-10	-22.7	12.5	11.3	-1.2
- Arson	8	12	4	50.0	3	2	-1	-33.3	37.5	16.7	-20.8
Racial/Religiously Aggravated Offences	12	10	-2	-16.7	7	3	-4	-57.1	58.3	30.0	-28.3
State Based Crime	Offences				Outcomes				Solved Rates %		
Crime Type	2014	2015	# diff.	% diff.	2014	2015	# diff.	% diff.	2014	2015	% pt. diff.
Drug Offences	61	65	4	6.6	55	59	4	7.3	90.2	90.8	0.6
- Trafficking of Drugs	13	18	5	38.5	8	13	5	62.5	61.5	72.2	10.7
- Possession of Drugs	48	47	-1	-2.1	47	46	-1	-2.1	97.9	97.9	0.0
Possession of Weapons	13	12	-1	-7.7	9	9	0	0.0	69.2	75.0	5.8
Public Order	74	97	23	31.1	42	38	-4	-9.5	56.8	39.2	-17.6
Miscellaneous Crimes against Society	20	30	10	50.0	10	10	0	0.0	50.0	33.3	-16.7

Corporate Services: Performance Summary
Essex Police Performance Summary

Colchester
Cumulative Year to October

Top Level	Offences				Outcomes				Solved Rates %		
Crime Type	2014	2015	# diff.	% diff.	2014	2015	# diff.	% diff.	2014	2015	% pt. diff.
Anti-Social Behaviour (incidents)	3868	3545	-323	-8.4	-	-	-	-	-	-	-
All Crime (excl. Action (NFIB) Fraud)	6239	7111	872	14.0	1693	1594	-99	-5.8	27.1	22.4	-4.7
- State Based Crime	562	724	162	28.8	378	361	-17	-4.5	67.3	49.9	-17.4
- Victim Based Crime	5677	6387	710	12.5	1315	1233	-82	-6.2	23.2	19.3	-3.9
Victim Based Crime	Offences				Outcomes				Solved Rates %		
Crime Type	2014	2015	# diff.	% diff.	2014	2015	# diff.	% diff.	2014	2015	% pt. diff.
Violence Against the Person	1594	1998	404	25.3	543	491	-52	-9.6	34.1	24.6	-9.5
- Homicide	2	0	-2	-100.0	1	2	1	100.0	50.0	-	-
- Violence with Injury	769	804	35	4.6	287	232	-55	-19.2	37.3	28.9	-8.5
- Violence without Injury	823	1194	371	45.1	255	257	2	0.8	31.0	21.5	-9.5
Sexual Offences	160	199	39	24.4	24	30	6	25.0	15.0	15.1	0.1
- Rape	67	83	16	23.9	6	6	0	0.0	9.0	7.2	-1.7
- Rape - Under 16 yrs	21	25	4	19.0	1	1	0	0.0	4.8	4.0	-0.8
- Rape - Over 16 yrs	46	58	12	26.1	5	5	0	0.0	10.9	8.6	-2.2
- Other Sexual Offences	93	116	23	24.7	18	24	6	33.3	19.4	20.7	1.3
Robbery	37	55	18	48.6	14	11	-3	-21.4	37.8	20.0	-17.8
- Robbery of business property	1	2	1	100.0	2	3	1	50.0	200.0	150.0	-50.0
- Robbery of Personal Property	36	53	17	47.2	12	8	-4	-33.3	33.3	15.1	-18.2
Theft Offences	2927	3209	282	9.6	570	555	-15	-2.6	19.5	17.3	-2.2
- Burglary	690	808	118	17.1	72	81	9	12.5	10.4	10.0	-0.4
- Dwelling Burglary	276	405	129	46.7	35	70	35	100.0	12.7	17.3	4.6
- Other Burglary	414	403	-11	-2.7	37	11	-26	-70.3	8.9	2.7	-6.2
- Vehicle Offences (incl. Interference)	413	489	76	18.4	33	17	-16	-48.5	8.0	3.5	-4.5
- Theft from Vehicle	265	310	45	17.0	14	3	-11	-78.6	5.3	1.0	-4.3
- Theft of Motor Vehicle	104	129	25	24.0	16	14	-2	-12.5	15.4	10.9	-4.5
- Vehicle Interference	44	50	6	13.6	3	0	-3	-100.0	6.8	0.0	-6.8
- Theft	1824	1912	88	4.8	465	457	-8	-1.7	25.5	23.9	-1.6
- Theft from the Person	79	121	42	53.2	2	10	8	400.0	2.5	8.3	5.7
- Theft of Pedal Cycle	262	272	10	3.8	14	4	-10	-71.4	5.3	1.5	-3.9
- Shoplifting	634	732	98	15.5	378	357	-21	-5.6	59.6	48.8	-10.9
- Other Theft	849	787	-62	-7.3	71	86	15	21.1	8.4	10.9	2.6
Criminal Damage inc. Arson	959	926	-33	-3.4	164	146	-18	-11.0	17.1	15.8	-1.3
- Criminal Damage	942	902	-40	-4.2	162	144	-18	-11.1	17.2	16.0	-1.2
- Arson	17	24	7	41.2	2	2	0	0.0	11.8	8.3	-3.4
Racial/Religiously Aggravated Offences	62	54	-8	-12.9	25	16	-9	-36.0	40.3	29.6	-10.7
State Based Crime	Offences				Outcomes				Solved Rates %		
Crime Type	2014	2015	# diff.	% diff.	2014	2015	# diff.	% diff.	2014	2015	% pt. diff.
Drug Offences	225	202	-23	-10.2	214	173	-41	-19.2	95.1	85.6	-9.5
- Trafficking of Drugs	27	80	53	196.3	23	52	29	126.1	85.2	65.0	-20.2
- Possession of Drugs	198	122	-76	-38.4	191	121	-70	-36.6	96.5	99.2	2.7
Possession of Weapons	25	42	17	68.0	19	23	4	21.1	76.0	54.8	-21.2
Public Order	250	370	120	48.0	108	122	14	13.0	43.2	33.0	-10.2
Miscellaneous Crimes against Society	62	110	48	77.4	37	43	6	16.2	59.7	39.1	-20.6

Corporate Services: Performance Summary
Essex Police Performance Summary

Colchester

Rolling 12 Months to October

Top Level	Offences				Outcomes				Solved Rates %		
Crime Type	2014	2015	# diff.	% diff.	2014	2015	# diff.	% diff.	2014	2015	% pt. diff.
Anti-Social Behaviour (incidents)	5734	5651	-83	-1.4	-	-	-	-	-	-	-
All Crime (excl. Action (NFIB) Fraud)	10647	11824	1177	11.1	2927	2930	3	0.1	27.5	24.8	-2.7
- State Based Crime	925	1110	185	20.0	639	638	-1	-0.2	69.1	57.5	-11.6
- Victim Based Crime	9722	10714	992	10.2	2288	2292	4	0.2	23.5	21.4	-2.1
Victim Based Crime	Offences				Outcomes				Solved Rates %		
Crime Type	2014	2015	# diff.	% diff.	2014	2015	# diff.	% diff.	2014	2015	% pt. diff.
Violence Against the Person	2679	3215	536	20.0	944	941	-3	-0.3	35.2	29.3	-6.0
- Homicide	3	0	-3	-100.0	1	2	1	100.0	33.3	-	-
- Violence with Injury	1273	1326	53	4.2	484	459	-25	-5.2	38.0	34.6	-3.4
- Violence without Injury	1403	1889	486	34.6	459	480	21	4.6	32.7	25.4	-7.3
Sexual Offences	268	349	81	30.2	50	48	-2	-4.0	18.7	13.8	-4.9
- Rape	104	132	28	26.9	14	8	-6	-42.9	13.5	6.1	-7.4
- Rape - Under 16 yrs	31	38	7	22.6	7	2	-5	-71.4	22.6	5.3	-17.3
- Rape - Over 16 yrs	73	94	21	28.8	7	6	-1	-14.3	9.6	6.4	-3.2
- Other Sexual Offences	164	217	53	32.3	36	40	4	11.1	22.0	18.4	-3.5
Robbery	77	95	18	23.4	22	23	1	4.5	28.6	24.2	-4.4
- Robbery of business property	7	5	-2	-28.6	3	3	0	0.0	42.9	60.0	17.1
- Robbery of Personal Property	70	90	20	28.6	19	20	1	5.3	27.1	22.2	-4.9
Theft Offences	5034	5429	395	7.8	1002	1018	16	1.6	19.9	18.8	-1.2
- Burglary	1211	1443	232	19.2	115	126	11	9.6	9.5	8.7	-0.8
- Dwelling Burglary	519	763	244	47.0	55	107	52	94.5	10.6	14.0	3.4
- Other Burglary	692	680	-12	-1.7	60	19	-41	-68.3	8.7	2.8	-5.9
- Vehicle Offences (incl. Interference)	758	892	134	17.7	42	42	0	0.0	5.5	4.7	-0.8
- Theft from Vehicle	516	541	25	4.8	15	8	-7	-46.7	2.9	1.5	-1.4
- Theft of Motor Vehicle	179	245	66	36.9	24	34	10	41.7	13.4	13.9	0.5
- Vehicle Interference	63	106	43	68.3	3	0	-3	-100.0	4.8	0.0	-4.8
- Theft	3065	3094	29	0.9	845	850	5	0.6	27.6	27.5	-0.1
- Theft from the Person	160	176	16	10.0	2	10	8	400.0	1.3	5.7	4.4
- Theft of Pedal Cycle	413	379	-34	-8.2	26	5	-21	-80.8	6.3	1.3	-5.0
- Shoplifting	1061	1222	161	15.2	673	670	-3	-0.4	63.4	54.8	-8.6
- Other Theft	1431	1317	-114	-8.0	144	165	21	14.6	10.1	12.5	2.5
Criminal Damage inc. Arson	1664	1626	-38	-2.3	270	262	-8	-3.0	16.2	16.1	-0.1
- Criminal Damage	1636	1582	-54	-3.3	267	257	-10	-3.7	16.3	16.2	-0.1
- Arson	28	44	16	57.1	3	5	2	66.7	10.7	11.4	0.6
Racial/Religiously Aggravated Offences	93	91	-2	-2.2	35	34	-1	-2.9	37.6	37.4	-0.3
State Based Crime	Offences				Outcomes				Solved Rates %		
Crime Type	2014	2015	# diff.	% diff.	2014	2015	# diff.	% diff.	2014	2015	% pt. diff.
Drug Offences	342	339	-3	-0.9	327	310	-17	-5.2	95.6	91.4	-4.2
- Trafficking of Drugs	37	96	59	159.5	32	67	35	109.4	86.5	69.8	-16.7
- Possession of Drugs	305	243	-62	-20.3	295	243	-52	-17.6	96.7	100.0	3.3
Possession of Weapons	51	64	13	25.5	41	37	-4	-9.8	80.4	57.8	-22.6
Public Order	419	544	125	29.8	205	216	11	5.4	48.9	39.7	-9.2
Miscellaneous Crimes against Society	113	163	50	44.2	66	75	9	13.6	58.4	46.0	-12.4

Corporate Services: Performance Summary

Essex Police Performance Summary

Trending

Cumulative Year to October

Top Level	Offences				Outcomes				Solved Rates %		
Crime Type	2014	2015	# diff.	% diff.	2014	2015	# diff.	% diff.	2014	2015	% pt. diff.
Anti-Social Behaviour (incidents)	3222	3082	-140	-4.3	-	-	-	-	-	-	-
All Crime (excl. Action (NFIB) Fraud)	5767	5878	111	1.9	1585	1394	-191	-12.1	27.5	23.7	-3.8
- State Based Crime	522	568	46	8.8	334	275	-59	-17.7	64.0	48.4	-15.6
- Victim Based Crime	5245	5310	65	1.2	1251	1119	-132	-10.6	23.9	21.1	-2.8
Victim Based Crime	Offences				Outcomes				Solved Rates %		
Crime Type	2014	2015	# diff.	% diff.	2014	2015	# diff.	% diff.	2014	2015	% pt. diff.
Violence Against the Person	1581	1845	264	16.7	565	534	-31	-5.5	35.7	28.9	-6.8
- Homicide	0	1	1	-	0	1	1	-	-	100.0	-
- Violence with Injury	719	744	25	3.5	252	229	-23	-9.1	35.0	30.8	-4.3
- Violence without Injury	862	1100	238	27.6	313	304	-9	-2.9	36.3	27.6	-8.7
Sexual Offences	138	161	23	16.7	19	21	2	10.5	13.8	13.0	-0.7
- Rape	40	55	15	37.5	4	8	4	100.0	10.0	14.5	4.5
- Rape - Under 16 yrs	10	19	9	90.0	4	3	-1	-25.0	40.0	15.8	-24.2
- Rape - Over 16 yrs	30	36	6	20.0	0	5	5	-	0.0	13.9	13.9
- Other Sexual Offences	98	106	8	8.2	15	13	-2	-13.3	15.3	12.3	-3.0
Robbery	62	46	-16	-25.8	9	7	-2	-22.2	14.5	15.2	0.7
- Robbery of business property	2	4	2	100.0	0	2	2	-	0.0	50.0	50.0
- Robbery of Personal Property	60	42	-18	-30.0	9	5	-4	-44.4	15.0	11.9	-3.1
Theft Offences	2613	2466	-147	-5.6	517	432	-85	-16.4	19.8	17.5	-2.3
- Burglary	710	699	-11	-1.5	51	48	-3	-5.9	7.2	6.9	-0.3
- Dwelling Burglary	278	306	28	10.1	26	39	13	50.0	9.4	12.7	3.4
- Other Burglary	432	393	-39	-9.0	25	9	-16	-64.0	5.8	2.3	-3.5
- Vehicle Offences (incl. Interference)	416	398	-18	-4.3	29	20	-9	-31.0	7.0	5.0	-1.9
- Theft from Vehicle	279	296	17	6.1	8	5	-3	-37.5	2.9	1.7	-1.2
- Theft of Motor Vehicle	103	68	-35	-34.0	20	11	-9	-45.0	19.4	16.2	-3.2
- Vehicle Interference	34	34	0	0.0	1	4	3	300.0	2.9	11.8	8.8
- Theft	1487	1369	-118	-7.9	437	364	-73	-16.7	29.4	26.6	-2.8
- Theft from the Person	51	86	35	68.6	1	3	2	200.0	2.0	3.5	1.5
- Theft of Pedal Cycle	119	77	-42	-35.3	4	6	2	50.0	3.4	7.8	4.4
- Shoplifting	629	586	-43	-6.8	367	307	-60	-16.3	58.3	52.4	-6.0
- Other Theft	688	620	-68	-9.9	65	48	-17	-26.2	9.4	7.7	-1.7
Criminal Damage inc. Arson	851	792	-59	-6.9	141	125	-16	-11.3	16.6	15.8	-0.8
- Criminal Damage	807	761	-46	-5.7	141	125	-16	-11.3	17.5	16.4	-1.0
- Arson	44	31	-13	-29.5	0	0	0	-	0.0	0.0	0.0
Racial/Religiously Aggravated Offences	43	17	-26	-60.5	16	5	-11	-68.8	37.2	29.4	-7.8
State Based Crime	Offences				Outcomes				Solved Rates %		
Crime Type	2014	2015	# diff.	% diff.	2014	2015	# diff.	% diff.	2014	2015	% pt. diff.
Drug Offences	178	126	-52	-29.2	161	112	-49	-30.4	90.4	88.9	-1.6
- Trafficking of Drugs	27	34	7	25.9	22	27	5	22.7	81.5	79.4	-2.1
- Possession of Drugs	151	92	-59	-39.1	139	85	-54	-38.8	92.1	92.4	0.3
Possession of Weapons	39	39	0	0.0	35	26	-9	-25.7	89.7	66.7	-23.1
Public Order	238	292	54	22.7	112	100	-12	-10.7	47.1	34.2	-12.8
Miscellaneous Crimes against Society	67	111	44	65.7	26	37	11	42.3	38.8	33.3	-5.5

Corporate Services: Performance Summary
Essex Police Performance Summary

Trending
Rolling 12 Months to October

Top Level	Offences				Outcomes				Solved Rates %		
Crime Type	2014	2015	# diff.	% diff.	2014	2015	# diff.	% diff.	2014	2015	% pt. diff.
Anti-Social Behaviour (incidents)	4791	4734	-57	-1.2	-	-	-	-	-	-	-
All Crime (excl. Action (NFIB) Fraud)	9304	9322	18	0.2	2812	2505	-307	-10.9	30.2	26.9	-3.4
- State Based Crime	833	889	56	6.7	575	492	-83	-14.4	69.0	55.3	-13.7
- Victim Based Crime	8471	8433	-38	-0.4	2237	2013	-224	-10.0	26.4	23.9	-2.5
Victim Based Crime	Offences				Outcomes				Solved Rates %		
Crime Type	2014	2015	# diff.	% diff.	2014	2015	# diff.	% diff.	2014	2015	% pt. diff.
Violence Against the Person	2482	2819	337	13.6	953	906	-47	-4.9	38.4	32.1	-6.3
- Homicide	0	2	2	-	0	1	1	-	-	50.0	-
- Violence with Injury	1139	1141	2	0.2	445	393	-52	-11.7	39.1	34.4	-4.6
- Violence without Injury	1343	1676	333	24.8	508	512	4	0.8	37.8	30.5	-7.3
Sexual Offences	214	269	55	25.7	52	43	-9	-17.3	24.3	16.0	-8.3
- Rape	68	97	29	42.6	13	14	1	7.7	19.1	14.4	-4.7
- Rape - Under 16 yrs	17	33	16	94.1	9	5	-4	-44.4	52.9	15.2	-37.8
- Rape - Over 16 yrs	51	64	13	25.5	4	9	5	125.0	7.8	14.1	6.2
- Other Sexual Offences	146	172	26	17.8	39	29	-10	-25.6	26.7	16.9	-9.9
Robbery	94	75	-19	-20.2	21	13	-8	-38.1	22.3	17.3	-5.0
- Robbery of business property	3	6	3	100.0	1	2	1	100.0	33.3	33.3	0.0
- Robbery of Personal Property	91	69	-22	-24.2	20	11	-9	-45.0	22.0	15.9	-6.0
Theft Offences	4213	3973	-240	-5.7	956	840	-116	-12.1	22.7	21.1	-1.5
- Burglary	1190	1102	-88	-7.4	110	135	25	22.7	9.2	12.3	3.0
- Dwelling Burglary	512	470	-42	-8.2	61	82	21	34.4	11.9	17.4	5.5
- Other Burglary	678	632	-46	-6.8	49	53	4	8.2	7.2	8.4	1.2
- Vehicle Offences (incl. Interference)	652	650	-2	-0.3	55	40	-15	-27.3	8.4	6.2	-2.3
- Theft from Vehicle	437	458	21	4.8	24	10	-14	-58.3	5.5	2.2	-3.3
- Theft of Motor Vehicle	163	134	-29	-17.8	30	26	-4	-13.3	18.4	19.4	1.0
- Vehicle Interference	52	58	6	11.5	1	4	3	300.0	1.9	6.9	5.0
- Theft	2371	2221	-150	-6.3	791	665	-126	-15.9	33.4	29.9	-3.4
- Theft from the Person	79	110	31	39.2	2	6	4	200.0	2.5	5.5	2.9
- Theft of Pedal Cycle	175	124	-51	-29.1	10	8	-2	-20.0	5.7	6.5	0.7
- Shoplifting	1028	987	-41	-4.0	654	550	-104	-15.9	63.6	55.7	-7.9
- Other Theft	1089	1000	-89	-8.2	125	101	-24	-19.2	11.5	10.1	-1.4
Criminal Damage inc. Arson	1468	1297	-171	-11.6	255	211	-44	-17.3	17.4	16.3	-1.1
- Criminal Damage	1409	1242	-167	-11.9	249	206	-43	-17.3	17.7	16.6	-1.1
- Arson	59	55	-4	-6.8	6	5	-1	-16.7	10.2	9.1	-1.1
Racial/Religiously Aggravated Offences	63	37	-26	-41.3	25	13	-12	-48.0	39.7	35.1	-4.5
State Based Crime	Offences				Outcomes				Solved Rates %		
Crime Type	2014	2015	# diff.	% diff.	2014	2015	# diff.	% diff.	2014	2015	% pt. diff.
Drug Offences	288	245	-43	-14.9	264	234	-30	-11.4	91.7	95.5	3.8
- Trafficking of Drugs	44	59	15	34.1	33	50	17	51.5	75.0	84.7	9.7
- Possession of Drugs	244	186	-58	-23.8	231	184	-47	-20.3	94.7	98.9	4.3
Possession of Weapons	67	60	-7	-10.4	60	37	-23	-38.3	89.6	61.7	-27.9
Public Order	370	429	59	15.9	196	161	-35	-17.9	53.0	37.5	-15.4
Miscellaneous Crimes against Society	108	155	47	43.5	55	60	5	9.1	50.9	38.7	-12.2

Corporate Services: Performance Summary

Essex Police Performance Summary

Southend

Cumulative Year to October

Top Level	Offences				Outcomes				Solved Rates %		
Crime Type	2014	2015	# diff.	% diff.	2014	2015	# diff.	% diff.	2014	2015	% pt. diff.
Anti-Social Behaviour (incidents)	5076	4522	-554	-10.9	-	-	-	-	-	-	-
All Crime (excl. Action (NFIB) Fraud)	7879	8329	450	5.7	2341	1692	-649	-27.7	29.7	20.3	-9.4
- State Based Crime	996	877	-119	-11.9	726	414	-312	-43.0	72.9	47.2	-25.7
- Victim Based Crime	6883	7452	569	8.3	1615	1278	-337	-20.9	23.5	17.1	-6.3
Victim Based Crime	Offences				Outcomes				Solved Rates %		
Crime Type	2014	2015	# diff.	% diff.	2014	2015	# diff.	% diff.	2014	2015	% pt. diff.
Violence Against the Person	1886	2271	385	20.4	704	579	-125	-17.8	37.3	25.5	-11.8
- Homicide	1	3	2	200.0	1	2	1	100.0	100.0	66.7	-33.3
- Violence with Injury	884	940	56	6.3	340	261	-79	-23.2	38.5	27.8	-10.7
- Violence without Injury	1001	1328	327	32.7	363	316	-47	-12.9	36.3	23.8	-12.5
Sexual Offences	196	184	-12	-6.1	31	29	-2	-6.5	15.8	15.8	-0.1
- Rape	88	62	-26	-29.5	12	10	-2	-16.7	13.6	16.1	2.5
- Rape - Under 16 yrs	22	16	-6	-27.3	4	5	1	25.0	18.2	31.3	13.1
- Rape - Over 16 yrs	66	46	-20	-30.3	8	5	-3	-37.5	12.1	10.9	-1.3
- Other Sexual Offences	108	122	14	13.0	19	19	0	0.0	17.6	15.6	-2.0
Robbery	82	97	15	18.3	14	13	-1	-7.1	17.1	13.4	-3.7
- Robbery of business property	7	6	-1	-14.3	4	1	-3	-75.0	57.1	16.7	-40.5
- Robbery of Personal Property	75	91	16	21.3	10	12	2	20.0	13.3	13.2	-0.1
Theft Offences	3707	3789	82	2.2	673	478	-195	-29.0	18.2	12.6	-5.5
- Burglary	788	847	59	7.5	77	57	-20	-26.0	9.8	6.7	-3.0
- Dwelling Burglary	435	513	78	17.9	58	39	-19	-32.8	13.3	7.6	-5.7
- Other Burglary	353	334	-19	-5.4	19	18	-1	-5.3	5.4	5.4	0.0
- Vehicle Offences (incl. Interference)	1011	956	-55	-5.4	51	39	-12	-23.5	5.0	4.1	-1.0
- Theft from Vehicle	663	652	-11	-1.7	13	11	-2	-15.4	2.0	1.7	-0.3
- Theft of Motor Vehicle	234	209	-25	-10.7	32	27	-5	-15.6	13.7	12.9	-0.8
- Vehicle Interference	114	95	-19	-16.7	6	1	-5	-83.3	5.3	1.1	-4.2
- Theft	1908	1986	78	4.1	545	382	-163	-29.9	28.6	19.2	-9.3
- Theft from the Person	134	151	17	12.7	3	6	3	100.0	2.2	4.0	1.7
- Theft of Pedal Cycle	234	247	13	5.6	7	3	-4	-57.1	3.0	1.2	-1.8
- Shoplifting	681	714	33	4.8	434	304	-130	-30.0	63.7	42.6	-21.2
- Other Theft	859	874	15	1.7	101	69	-32	-31.7	11.8	7.9	-3.9
Criminal Damage inc. Arson	1012	1111	99	9.8	193	179	-14	-7.3	19.1	16.1	-3.0
- Criminal Damage	965	1084	119	12.3	184	175	-9	-4.9	19.1	16.1	-2.9
- Arson	47	27	-20	-42.6	9	4	-5	-55.6	19.1	14.8	-4.3
Racial/Religiously Aggravated Offences	76	72	-4	-5.3	29	16	-13	-44.8	38.2	22.2	-15.9
State Based Crime	Offences				Outcomes				Solved Rates %		
Crime Type	2014	2015	# diff.	% diff.	2014	2015	# diff.	% diff.	2014	2015	% pt. diff.
Drug Offences	435	187	-248	-57.0	415	164	-251	-60.5	95.4	87.7	-7.7
- Trafficking of Drugs	155	60	-95	-61.3	143	44	-99	-69.2	92.3	73.3	-18.9
- Possession of Drugs	280	127	-153	-54.6	272	120	-152	-55.9	97.1	94.5	-2.7
Possession of Weapons	66	76	10	15.2	55	48	-7	-12.7	83.3	63.2	-20.2
Public Order	400	490	90	22.5	204	152	-52	-25.5	51.0	31.0	-20.0
Miscellaneous Crimes against Society	95	124	29	30.5	52	50	-2	-3.8	54.7	40.3	-14.4

Corporate Services: Performance Summary
Essex Police Performance Summary

Southend

Rolling 12 Months to October

Top Level	Offences				Outcomes				Solved Rates %		
Crime Type	2014	2015	# diff.	% diff.	2014	2015	# diff.	% diff.	2014	2015	% pt. diff.
Anti-Social Behaviour (incidents)	7642	7392	-250	-3.3	-	-	-	-	-	-	-
All Crime (excl. Action (NFIB) Fraud)	13190	13348	158	1.2	4043	3119	-924	-22.9	30.7	23.4	-7.3
- State Based Crime	1586	1417	-169	-10.7	1183	833	-350	-29.6	74.6	58.8	-15.8
- Victim Based Crime	11604	11931	327	2.8	2860	2286	-574	-20.1	24.6	19.2	-5.5
Victim Based Crime	Offences				Outcomes				Solved Rates %		
Crime Type	2014	2015	# diff.	% diff.	2014	2015	# diff.	% diff.	2014	2015	% pt. diff.
Violence Against the Person	3042	3528	486	16.0	1216	1034	-182	-15.0	40.0	29.3	-10.7
- Homicide	4	4	0	0.0	3	3	0	0.0	75.0	75.0	0.0
- Violence with Injury	1450	1477	27	1.9	581	471	-110	-18.9	40.1	31.9	-8.2
- Violence without Injury	1588	2047	459	28.9	632	560	-72	-11.4	39.8	27.4	-12.4
Sexual Offences	295	329	34	11.5	50	52	2	4.0	16.9	15.8	-1.1
- Rape	130	105	-25	-19.2	20	22	2	10.0	15.4	21.0	5.6
- Rape - Under 16 yrs	37	29	-8	-21.6	6	11	5	83.3	16.2	37.9	21.7
- Rape - Over 16 yrs	93	76	-17	-18.3	14	11	-3	-21.4	15.1	14.5	-0.6
- Other Sexual Offences	165	224	59	35.8	30	30	0	0.0	18.2	13.4	-4.8
Robbery	161	173	12	7.5	36	28	-8	-22.2	22.4	16.2	-6.2
- Robbery of business property	11	11	0	0.0	6	2	-4	-66.7	54.5	18.2	-36.4
- Robbery of Personal Property	150	162	12	8.0	30	26	-4	-13.3	20.0	16.0	-4.0
Theft Offences	6405	6079	-326	-5.1	1222	899	-323	-26.4	19.1	14.8	-4.3
- Burglary	1528	1392	-136	-8.9	123	106	-17	-13.8	8.0	7.6	-0.4
- Dwelling Burglary	896	858	-38	-4.2	95	72	-23	-24.2	10.6	8.4	-2.2
- Other Burglary	632	534	-98	-15.5	28	34	6	21.4	4.4	6.4	1.9
- Vehicle Offences (incl. Interference)	1621	1522	-99	-6.1	90	67	-23	-25.6	5.6	4.4	-1.2
- Theft from Vehicle	1133	1024	-109	-9.6	28	23	-5	-17.9	2.5	2.2	-0.2
- Theft of Motor Vehicle	336	346	10	3.0	55	42	-13	-23.6	16.4	12.1	-4.2
- Vehicle Interference	152	152	0	0.0	7	2	-5	-71.4	4.6	1.3	-3.3
- Theft	3256	3165	-91	-2.8	1009	726	-283	-28.0	31.0	22.9	-8.1
- Theft from the Person	215	237	22	10.2	6	7	1	16.7	2.8	3.0	0.2
- Theft of Pedal Cycle	378	353	-25	-6.6	19	10	-9	-47.4	5.0	2.8	-2.2
- Shoplifting	1209	1132	-77	-6.4	818	582	-236	-28.9	67.7	51.4	-16.2
- Other Theft	1454	1443	-11	-0.8	166	127	-39	-23.5	11.4	8.8	-2.6
Criminal Damage inc. Arson	1701	1822	121	7.1	336	273	-63	-18.8	19.8	15.0	-4.8
- Criminal Damage	1632	1776	144	8.8	323	269	-54	-16.7	19.8	15.1	-4.6
- Arson	69	46	-23	-33.3	13	4	-9	-69.2	18.8	8.7	-10.1
Racial/Religiously Aggravated Offences	126	125	-1	-0.8	50	38	-12	-24.0	39.7	30.4	-9.3
State Based Crime	Offences				Outcomes				Solved Rates %		
Crime Type	2014	2015	# diff.	% diff.	2014	2015	# diff.	% diff.	2014	2015	% pt. diff.
Drug Offences	689	398	-291	-42.2	656	384	-272	-41.5	95.2	96.5	1.3
- Trafficking of Drugs	193	124	-69	-35.8	178	106	-72	-40.4	92.2	85.5	-6.7
- Possession of Drugs	496	274	-222	-44.8	478	278	-200	-41.8	96.4	101.5	5.1
Possession of Weapons	117	96	-21	-17.9	96	67	-29	-30.2	82.1	69.8	-12.3
Public Order	629	702	73	11.6	336	271	-65	-19.3	53.4	38.6	-14.8
Miscellaneous Crimes against Society	151	221	70	46.4	95	111	16	16.8	62.9	50.2	-12.7

Corporate Services: Performance Summary
Essex Police Performance Summary

Castle Point
Cumulative Year to October

Top Level	Offences				Outcomes				Solved Rates %		
Crime Type	2014	2015	# diff.	% diff.	2014	2015	# diff.	% diff.	2014	2015	% pt. diff.
Anti-Social Behaviour (incidents)	1478	1272	-206	-13.9	-	-	-	-	-	-	-
All Crime (excl. Action (NFIB) Fraud)	2020	2338	318	15.7	507	444	-63	-12.4	25.1	19.0	-6.1
- State Based Crime	196	226	30	15.3	120	101	-19	-15.8	61.2	44.7	-16.5
- Victim Based Crime	1824	2112	288	15.8	387	343	-44	-11.4	21.2	16.2	-5.0
Victim Based Crime	Offences				Outcomes				Solved Rates %		
Crime Type	2014	2015	# diff.	% diff.	2014	2015	# diff.	% diff.	2014	2015	% pt. diff.
Violence Against the Person	497	608	111	22.3	173	155	-18	-10.4	34.8	25.5	-9.3
- Homicide	0	0	0	-	0	0	0	-	-	-	-
- Violence with Injury	260	254	-6	-2.3	93	73	-20	-21.5	35.8	28.7	-7.0
- Violence without Injury	237	354	117	49.4	80	82	2	2.5	33.8	23.2	-10.6
Sexual Offences	55	62	7	12.7	7	22	15	214.3	12.7	35.5	22.8
- Rape	20	21	1	5.0	2	2	0	0.0	10.0	9.5	-0.5
- Rape - Under 16 yrs	6	10	4	66.7	1	1	0	0.0	16.7	10.0	-6.7
- Rape - Over 16 yrs	14	11	-3	-21.4	1	1	0	0.0	7.1	9.1	1.9
- Other Sexual Offences	35	41	6	17.1	5	20	15	300.0	14.3	48.8	34.5
Robbery	19	25	6	31.6	3	8	5	166.7	15.8	32.0	16.2
- Robbery of business property	1	8	7	700.0	0	3	3	-	0.0	37.5	37.5
- Robbery of Personal Property	18	17	-1	-5.6	3	5	2	66.7	16.7	29.4	12.7
Theft Offences	934	1102	168	18.0	170	112	-58	-34.1	18.2	10.2	-8.0
- Burglary	293	424	131	44.7	36	16	-20	-55.6	12.3	3.8	-8.5
- Dwelling Burglary	171	207	36	21.1	34	10	-24	-70.6	19.9	4.8	-15.1
- Other Burglary	122	217	95	77.9	2	6	4	200.0	1.6	2.8	1.1
- Vehicle Offences (incl. Interference)	189	241	52	27.5	21	9	-12	-57.1	11.1	3.7	-7.4
- Theft from Vehicle	113	141	28	24.8	13	5	-8	-61.5	11.5	3.5	-8.0
- Theft of Motor Vehicle	61	78	17	27.9	8	4	-4	-50.0	13.1	5.1	-8.0
- Vehicle Interference	15	22	7	46.7	0	0	0	-	0.0	0.0	0.0
- Theft	452	437	-15	-3.3	113	87	-26	-23.0	25.0	19.9	-5.1
- Theft from the Person	15	27	12	80.0	1	2	1	100.0	6.7	7.4	0.7
- Theft of Pedal Cycle	56	32	-24	-42.9	5	2	-3	-60.0	8.9	6.3	-2.7
- Shoplifting	108	112	4	3.7	59	49	-10	-16.9	54.6	43.8	-10.9
- Other Theft	273	266	-7	-2.6	48	34	-14	-29.2	17.6	12.8	-4.8
Criminal Damage inc. Arson	319	315	-4	-1.3	34	46	12	35.3	10.7	14.6	3.9
- Criminal Damage	305	305	0	0.0	33	45	12	36.4	10.8	14.8	3.9
- Arson	14	10	-4	-28.6	1	1	0	0.0	7.1	10.0	2.9
Racial/Religiously Aggravated Offences	11	12	1	9.1	1	4	3	300.0	9.1	33.3	24.2
State Based Crime	Offences				Outcomes				Solved Rates %		
Crime Type	2014	2015	# diff.	% diff.	2014	2015	# diff.	% diff.	2014	2015	% pt. diff.
Drug Offences	85	49	-36	-42.4	77	46	-31	-40.3	90.6	93.9	3.3
- Trafficking of Drugs	9	8	-1	-11.1	8	5	-3	-37.5	88.9	62.5	-26.4
- Possession of Drugs	76	41	-35	-46.1	69	41	-28	-40.6	90.8	100.0	9.2
Possession of Weapons	13	13	0	0.0	7	8	1	14.3	53.8	61.5	7.7
Public Order	82	130	48	58.5	30	37	7	23.3	36.6	28.5	-8.1
Miscellaneous Crimes against Society	16	34	18	112.5	6	10	4	66.7	37.5	29.4	-8.1

Corporate Services: Performance Summary
Essex Police Performance Summary

Castle Point
Rolling 12 Months to October

Top Level	Offences				Outcomes				Solved Rates %		
Crime Type	2014	2015	# diff.	% diff.	2014	2015	# diff.	% diff.	2014	2015	% pt. diff.
Anti-Social Behaviour (incidents)	2186	2100	-86	-3.9	-	-	-	-	-	-	-
All Crime (excl. Action (NFIB) Fraud)	3483	3647	164	4.7	842	787	-55	-6.5	24.2	21.6	-2.6
- State Based Crime	311	353	42	13.5	206	183	-23	-11.2	66.2	51.8	-14.4
- Victim Based Crime	3172	3294	122	3.8	636	604	-32	-5.0	20.1	18.3	-1.7
Victim Based Crime	Offences				Outcomes				Solved Rates %		
Crime Type	2014	2015	# diff.	% diff.	2014	2015	# diff.	% diff.	2014	2015	% pt. diff.
Violence Against the Person	795	923	128	16.1	288	260	-28	-9.7	36.2	28.2	-8.1
- Homicide	0	0	0	-	0	0	0	-	-	-	-
- Violence with Injury	409	395	-14	-3.4	148	118	-30	-20.3	36.2	29.9	-6.3
- Violence without Injury	386	528	142	36.8	140	142	2	1.4	36.3	26.9	-9.4
Sexual Offences	87	109	22	25.3	13	36	23	176.9	14.9	33.0	18.1
- Rape	32	28	-4	-12.5	7	7	0	0.0	21.9	25.0	3.1
- Rape - Under 16 yrs	11	10	-1	-9.1	5	4	-1	-20.0	45.5	40.0	-5.5
- Rape - Over 16 yrs	21	18	-3	-14.3	2	3	1	50.0	9.5	16.7	7.1
- Other Sexual Offences	55	81	26	47.3	6	29	23	383.3	10.9	35.8	24.9
Robbery	42	40	-2	-4.8	4	9	5	125.0	9.5	22.5	13.0
- Robbery of business property	9	16	7	77.8	0	4	4	-	0.0	25.0	25.0
- Robbery of Personal Property	33	24	-9	-27.3	4	5	1	25.0	12.1	20.8	8.7
Theft Offences	1707	1733	26	1.5	269	228	-41	-15.2	15.8	13.2	-2.6
- Burglary	551	656	105	19.1	46	30	-16	-34.8	8.3	4.6	-3.8
- Dwelling Burglary	355	367	12	3.4	43	22	-21	-48.8	12.1	6.0	-6.1
- Other Burglary	196	289	93	47.4	3	8	5	166.7	1.5	2.8	1.2
- Vehicle Offences (incl. Interference)	407	398	-9	-2.2	28	41	13	46.4	6.9	10.3	3.4
- Theft from Vehicle	265	232	-33	-12.5	13	35	22	169.2	4.9	15.1	10.2
- Theft of Motor Vehicle	114	123	9	7.9	15	6	-9	-60.0	13.2	4.9	-8.3
- Vehicle Interference	28	43	15	53.6	0	0	0	-	0.0	0.0	0.0
- Theft	749	679	-70	-9.3	195	157	-38	-19.5	26.0	23.1	-2.9
- Theft from the Person	33	38	5	15.2	2	2	0	0.0	6.1	5.3	-0.8
- Theft of Pedal Cycle	68	62	-6	-8.8	6	6	0	0.0	8.8	9.7	0.9
- Shoplifting	190	167	-23	-12.1	108	81	-27	-25.0	56.8	48.5	-8.3
- Other Theft	458	412	-46	-10.0	79	68	-11	-13.9	17.2	16.5	-0.7
Criminal Damage inc. Arson	541	489	-52	-9.6	62	71	9	14.5	11.5	14.5	3.1
- Criminal Damage	523	472	-51	-9.8	61	68	7	11.5	11.7	14.4	2.7
- Arson	18	17	-1	-5.6	1	3	2	200.0	5.6	17.6	12.1
Racial/Religiously Aggravated Offences	14	18	4	28.6	7	7	0	0.0	50.0	38.9	-11.1
State Based Crime	Offences				Outcomes				Solved Rates %		
Crime Type	2014	2015	# diff.	% diff.	2014	2015	# diff.	% diff.	2014	2015	% pt. diff.
Drug Offences	139	83	-56	-40.3	127	83	-44	-34.6	91.4	100.0	8.6
- Trafficking of Drugs	20	14	-6	-30.0	15	9	-6	-40.0	75.0	64.3	-10.7
- Possession of Drugs	119	69	-50	-42.0	112	74	-38	-33.9	94.1	107.2	13.1
Possession of Weapons	19	23	4	21.1	12	18	6	50.0	63.2	78.3	15.1
Public Order	115	188	73	63.5	46	62	16	34.8	40.0	33.0	-7.0
Miscellaneous Crimes against Society	38	59	21	55.3	21	20	-1	-4.8	55.3	33.9	-21.4

Corporate Services: Performance Summary
Essex Police Performance Summary

Rochford
Cumulative Year to October

Top Level	Offences				Outcomes				Solved Rates %		
Crime Type	2014	2015	# diff.	% diff.	2014	2015	# diff.	% diff.	2014	2015	% pt. diff.
Anti-Social Behaviour (incidents)	1104	1041	-63	-5.7	-	-	-	-	-	-	-
All Crime (excl. Action (NFIB) Fraud)	1552	1838	286	18.4	378	380	2	0.5	24.4	20.7	-3.7
- State Based Crime	129	150	21	16.3	84	65	-19	-22.6	65.1	43.3	-21.8
- Victim Based Crime	1423	1688	265	18.6	294	315	21	7.1	20.7	18.7	-2.0
Victim Based Crime	Offences				Outcomes				Solved Rates %		
Crime Type	2014	2015	# diff.	% diff.	2014	2015	# diff.	% diff.	2014	2015	% pt. diff.
Violence Against the Person	359	468	109	30.4	119	114	-5	-4.2	33.1	24.4	-8.8
- Homicide	0	0	0	-	0	1	1	-	-	-	-
- Violence with Injury	178	196	18	10.1	65	59	-6	-9.2	36.5	30.1	-6.4
- Violence without Injury	181	272	91	50.3	54	54	0	0.0	29.8	19.9	-10.0
Sexual Offences	41	41	0	0.0	10	12	2	20.0	24.4	29.3	4.9
- Rape	14	15	1	7.1	0	2	2	-	0.0	13.3	13.3
- Rape - Under 16 yrs	7	5	-2	-28.6	0	0	0	-	0.0	0.0	0.0
- Rape - Over 16 yrs	7	10	3	42.9	0	2	2	-	0.0	20.0	20.0
- Other Sexual Offences	27	26	-1	-3.7	10	10	0	0.0	37.0	38.5	1.4
Robbery	9	14	5	55.6	2	4	2	100.0	22.2	28.6	6.3
- Robbery of business property	1	0	-1	-100.0	1	0	-1	-100.0	100.0	-	-
- Robbery of Personal Property	8	14	6	75.0	1	4	3	300.0	12.5	28.6	16.1
Theft Offences	774	886	112	14.5	127	156	29	22.8	16.4	17.6	1.2
- Burglary	206	250	44	21.4	14	7	-7	-50.0	6.8	2.8	-4.0
- Dwelling Burglary	120	135	15	12.5	10	2	-8	-80.0	8.3	1.5	-6.9
- Other Burglary	86	115	29	33.7	4	5	1	25.0	4.7	4.3	-0.3
- Vehicle Offences (incl. Interference)	163	173	10	6.1	7	7	0	0.0	4.3	4.0	-0.2
- Theft from Vehicle	109	103	-6	-5.5	3	0	-3	-100.0	2.8	0.0	-2.8
- Theft of Motor Vehicle	45	63	18	40.0	3	7	4	133.3	6.7	11.1	4.4
- Vehicle Interference	9	7	-2	-22.2	1	0	-1	-100.0	11.1	0.0	-11.1
- Theft	405	463	58	14.3	106	142	36	34.0	26.2	30.7	4.5
- Theft from the Person	17	23	6	35.3	1	1	0	0.0	5.9	4.3	-1.5
- Theft of Pedal Cycle	25	45	20	80.0	0	1	1	-	0.0	2.2	2.2
- Shoplifting	168	211	43	25.6	88	126	38	43.2	52.4	59.7	7.3
- Other Theft	195	184	-11	-5.6	17	14	-3	-17.6	8.7	7.6	-1.1
Criminal Damage inc. Arson	240	279	39	16.3	36	29	-7	-19.4	15.0	10.4	-4.6
- Criminal Damage	232	270	38	16.4	36	28	-8	-22.2	15.5	10.4	-5.1
- Arson	8	9	1	12.5	0	1	1	-	0.0	11.1	11.1
Racial/Religiously Aggravated Offences	10	10	0	0.0	5	5	0	0.0	50.0	50.0	0.0
State Based Crime	Offences				Outcomes				Solved Rates %		
Crime Type	2014	2015	# diff.	% diff.	2014	2015	# diff.	% diff.	2014	2015	% pt. diff.
Drug Offences	52	32	-20	-38.5	50	31	-19	-38.0	96.2	96.9	0.7
- Trafficking of Drugs	19	7	-12	-63.2	16	6	-10	-62.5	84.2	85.7	1.5
- Possession of Drugs	33	25	-8	-24.2	34	25	-9	-26.5	103.0	100.0	-3.0
Possession of Weapons	7	11	4	57.1	6	9	3	50.0	85.7	81.8	-3.9
Public Order	51	87	36	70.6	20	22	2	10.0	39.2	25.3	-13.9
Miscellaneous Crimes against Society	19	20	1	5.3	8	3	-5	-62.5	42.1	15.0	-27.1

Corporate Services: Performance Summary
Essex Police Performance Summary

Rochford
Rolling 12 Months to October

Top Level	Offences				Outcomes				Solved Rates %		
Crime Type	2014	2015	# diff.	% diff.	2014	2015	# diff.	% diff.	2014	2015	% pt. diff.
Anti-Social Behaviour (incidents)	1617	1662	45	2.8	-	-	-	-	-	-	-
All Crime (excl. Action (NFIB) Fraud)	2793	2981	188	6.7	689	703	14	2.0	24.7	23.6	-1.1
- State Based Crime	231	242	11	4.8	168	131	-37	-22.0	72.7	54.1	-18.6
- Victim Based Crime	2562	2739	177	6.9	521	572	51	9.8	20.3	20.9	0.5
Victim Based Crime	Offences				Outcomes				Solved Rates %		
Crime Type	2014	2015	# diff.	% diff.	2014	2015	# diff.	% diff.	2014	2015	% pt. diff.
Violence Against the Person	582	722	140	24.1	217	219	2	0.9	37.3	30.3	-7.0
- Homicide	0	1	1	-	0	1	1	-	-	100.0	-
- Violence with Injury	298	315	17	5.7	121	114	-7	-5.8	40.6	36.2	-4.4
- Violence without Injury	284	406	122	43.0	96	104	8	8.3	33.8	25.6	-8.2
Sexual Offences	61	68	7	11.5	12	19	7	58.3	19.7	27.9	8.3
- Rape	22	29	7	31.8	0	5	5	-	0.0	17.2	17.2
- Rape - Under 16 yrs	10	9	-1	-10.0	0	0	0	-	0.0	0.0	0.0
- Rape - Over 16 yrs	12	20	8	66.7	0	5	5	-	0.0	25.0	25.0
- Other Sexual Offences	39	39	0	0.0	12	14	2	16.7	30.8	35.9	5.1
Robbery	17	21	4	23.5	4	5	1	25.0	23.5	23.8	0.3
- Robbery of business property	1	3	2	200.0	1	1	0	0.0	100.0	33.3	-66.7
- Robbery of Personal Property	16	18	2	12.5	3	4	1	33.3	18.8	22.2	3.5
Theft Offences	1441	1455	14	1.0	210	276	66	31.4	14.6	19.0	4.4
- Burglary	446	424	-22	-4.9	21	16	-5	-23.8	4.7	3.8	-0.9
- Dwelling Burglary	275	248	-27	-9.8	13	8	-5	-38.5	4.7	3.2	-1.5
- Other Burglary	171	176	5	2.9	8	8	0	0.0	4.7	4.5	-0.1
- Vehicle Offences (incl. Interference)	343	302	-41	-12.0	9	12	3	33.3	2.6	4.0	1.3
- Theft from Vehicle	247	175	-72	-29.1	3	1	-2	-66.7	1.2	0.6	-0.6
- Theft of Motor Vehicle	74	108	34	45.9	5	11	6	120.0	6.8	10.2	3.4
- Vehicle Interference	22	19	-3	-13.6	1	0	-1	-100.0	4.5	0.0	-4.5
- Theft	652	729	77	11.8	180	248	68	37.8	27.6	34.0	6.4
- Theft from the Person	27	47	20	74.1	1	1	0	0.0	3.7	2.1	-1.6
- Theft of Pedal Cycle	35	52	17	48.6	0	2	2	-	0.0	3.8	3.8
- Shoplifting	244	302	58	23.8	147	213	66	44.9	60.2	70.5	10.3
- Other Theft	346	328	-18	-5.2	32	32	0	0.0	9.2	9.8	0.5
Criminal Damage inc. Arson	461	473	12	2.6	78	53	-25	-32.1	16.9	11.2	-5.7
- Criminal Damage	443	457	14	3.2	77	51	-26	-33.8	17.4	11.2	-6.2
- Arson	18	16	-2	-11.1	1	2	1	100.0	5.6	12.5	6.9
Racial/Religiously Aggravated Offences	12	14	2	16.7	6	8	2	33.3	50.0	57.1	7.1
State Based Crime	Offences				Outcomes				Solved Rates %		
Crime Type	2014	2015	# diff.	% diff.	2014	2015	# diff.	% diff.	2014	2015	% pt. diff.
Drug Offences	111	71	-40	-36.0	111	67	-44	-39.6	100.0	94.4	-5.6
- Trafficking of Drugs	23	12	-11	-47.8	22	13	-9	-40.9	95.7	108.3	12.7
- Possession of Drugs	88	59	-29	-33.0	89	54	-35	-39.3	101.1	91.5	-9.6
Possession of Weapons	10	23	13	130.0	10	19	9	90.0	100.0	82.6	-17.4
Public Order	78	112	34	43.6	35	35	0	0.0	44.9	31.3	-13.6
Miscellaneous Crimes against Society	32	36	4	12.5	12	10	-2	-16.7	37.5	27.8	-9.7

Corporate Services: Performance Summary
Essex Police Performance Summary

Basildon
Cumulative Year to October

Top Level	Offences				Outcomes				Solved Rates %		
Crime Type	2014	2015	# diff.	% diff.	2014	2015	# diff.	% diff.	2014	2015	% pt. diff.
Anti-Social Behaviour (incidents)	4222	3778	-444	-10.5	-	-	-	-	-	-	-
All Crime (excl. Action (NFIB) Fraud)	6946	8258	1312	18.9	1938	1465	-473	-24.4	27.9	17.7	-10.2
- State Based Crime	723	747	24	3.3	509	346	-163	-32.0	70.4	46.3	-24.1
- Victim Based Crime	6223	7511	1288	20.7	1429	1119	-310	-21.7	23.0	14.9	-8.1
Victim Based Crime	Offences				Outcomes				Solved Rates %		
Crime Type	2014	2015	# diff.	% diff.	2014	2015	# diff.	% diff.	2014	2015	% pt. diff.
Violence Against the Person	1508	1944	436	28.9	502	435	-67	-13.3	33.3	22.4	-10.9
- Homicide	0	5	5	-	0	3	3	-	-	60.0	-
- Violence with Injury	700	767	67	9.6	253	180	-73	-28.9	36.1	23.5	-12.7
- Violence without Injury	808	1172	364	45.0	249	252	3	1.2	30.8	21.5	-9.3
Sexual Offences	136	182	46	33.8	27	25	-2	-7.4	19.9	13.7	-6.1
- Rape	43	62	19	44.2	9	6	-3	-33.3	20.9	9.7	-11.3
- Rape - Under 16 yrs	11	19	8	72.7	4	5	1	25.0	36.4	26.3	-10.0
- Rape - Over 16 yrs	32	43	11	34.4	5	1	-4	-80.0	15.6	2.3	-13.3
- Other Sexual Offences	93	120	27	29.0	18	19	1	5.6	19.4	15.8	-3.5
Robbery	65	114	49	75.4	8	17	9	112.5	12.3	14.9	2.6
- Robbery of business property	6	9	3	50.0	1	4	3	300.0	16.7	44.4	27.8
- Robbery of Personal Property	59	105	46	78.0	7	13	6	85.7	11.9	12.4	0.5
Theft Offences	3534	3979	445	12.6	742	529	-213	-28.7	21.0	13.3	-7.7
- Burglary	934	1094	160	17.1	173	63	-110	-63.6	18.5	5.8	-12.8
- Dwelling Burglary	564	630	66	11.7	156	43	-113	-72.4	27.7	6.8	-20.8
- Other Burglary	370	464	94	25.4	17	20	3	17.6	4.6	4.3	-0.3
- Vehicle Offences (incl. Interference)	933	1335	402	43.1	57	32	-25	-43.9	6.1	2.4	-3.7
- Theft from Vehicle	615	854	239	38.9	29	11	-18	-62.1	4.7	1.3	-3.4
- Theft of Motor Vehicle	216	319	103	47.7	26	17	-9	-34.6	12.0	5.3	-6.7
- Vehicle Interference	102	162	60	58.8	2	4	2	100.0	2.0	2.5	0.5
- Theft	1667	1550	-117	-7.0	512	434	-78	-15.2	30.7	28.0	-2.7
- Theft from the Person	97	103	6	6.2	5	1	-4	-80.0	5.2	1.0	-4.2
- Theft of Pedal Cycle	159	129	-30	-18.9	4	2	-2	-50.0	2.5	1.6	-1.0
- Shoplifting	584	628	44	7.5	403	366	-37	-9.2	69.0	58.3	-10.7
- Other Theft	827	690	-137	-16.6	100	65	-35	-35.0	12.1	9.4	-2.7
Criminal Damage inc. Arson	980	1292	312	31.8	150	113	-37	-24.7	15.3	8.7	-6.6
- Criminal Damage	955	1257	302	31.6	144	112	-32	-22.2	15.1	8.9	-6.2
- Arson	25	35	10	40.0	6	1	-5	-83.3	24.0	2.9	-21.1
Racial/Religiously Aggravated Offences	68	56	-12	-17.6	22	16	-6	-27.3	32.4	28.6	-3.8
State Based Crime	Offences				Outcomes				Solved Rates %		
Crime Type	2014	2015	# diff.	% diff.	2014	2015	# diff.	% diff.	2014	2015	% pt. diff.
Drug Offences	358	200	-158	-44.1	333	190	-143	-42.9	93.0	95.0	2.0
- Trafficking of Drugs	63	45	-18	-28.6	45	41	-4	-8.9	71.4	91.1	19.7
- Possession of Drugs	295	155	-140	-47.5	288	149	-139	-48.3	97.6	96.1	-1.5
Possession of Weapons	42	55	13	31.0	27	28	1	3.7	64.3	50.9	-13.4
Public Order	254	374	120	47.2	110	94	-16	-14.5	43.3	25.1	-18.2
Miscellaneous Crimes against Society	69	118	49	71.0	39	34	-5	-12.8	56.5	28.8	-27.7

Corporate Services: Performance Summary
Essex Police Performance Summary

Basildon

Rolling 12 Months to October

Top Level	Offences				Outcomes				Solved Rates %		
Crime Type	2014	2015	# diff.	% diff.	2014	2015	# diff.	% diff.	2014	2015	% pt. diff.
Anti-Social Behaviour (incidents)	6167	6030	-137	-2.2	-	-	-	-	-	-	-
All Crime (excl. Action (NFIB) Fraud)	12182	13467	1285	10.5	3445	2743	-702	-20.4	28.3	20.4	-7.9
- State Based Crime	1245	1209	-36	-2.9	949	683	-266	-28.0	76.2	56.5	-19.7
- Victim Based Crime	10937	12258	1321	12.1	2496	2060	-436	-17.5	22.8	16.8	-6.0
Victim Based Crime	Offences				Outcomes				Solved Rates %		
Crime Type	2014	2015	# diff.	% diff.	2014	2015	# diff.	% diff.	2014	2015	% pt. diff.
Violence Against the Person	2451	3007	556	22.7	853	772	-81	-9.5	34.8	25.7	-9.1
- Homicide	0	5	5	-	0	3	3	-	-	60.0	-
- Violence with Injury	1143	1271	128	11.2	420	344	-76	-18.1	36.7	27.1	-9.7
- Violence without Injury	1308	1731	423	32.3	433	425	-8	-1.8	33.1	24.6	-8.6
Sexual Offences	247	334	87	35.2	44	57	13	29.5	17.8	17.1	-0.7
- Rape	84	114	30	35.7	14	15	1	7.1	16.7	13.2	-3.5
- Rape - Under 16 yrs	24	40	16	66.7	5	8	3	60.0	20.8	20.0	-0.8
- Rape - Over 16 yrs	60	74	14	23.3	9	7	-2	-22.2	15.0	9.5	-5.5
- Other Sexual Offences	163	220	57	35.0	30	42	12	40.0	18.4	19.1	0.7
Robbery	129	193	64	49.6	11	32	21	190.9	8.5	16.6	8.1
- Robbery of business property	18	20	2	11.1	1	8	7	700.0	5.6	40.0	34.4
- Robbery of Personal Property	111	173	62	55.9	10	24	14	140.0	9.0	13.9	4.9
Theft Offences	6333	6762	429	6.8	1339	1001	-338	-25.2	21.1	14.8	-6.3
- Burglary	1717	1978	261	15.2	266	137	-129	-48.5	15.5	6.9	-8.6
- Dwelling Burglary	1116	1137	21	1.9	227	99	-128	-56.4	20.3	8.7	-11.6
- Other Burglary	601	841	240	39.9	39	38	-1	-2.6	6.5	4.5	-2.0
- Vehicle Offences (incl. Interference)	1704	2188	484	28.4	86	64	-22	-25.6	5.0	2.9	-2.1
- Theft from Vehicle	1181	1450	269	22.8	39	26	-13	-33.3	3.3	1.8	-1.5
- Theft of Motor Vehicle	380	464	84	22.1	45	31	-14	-31.1	11.8	6.7	-5.2
- Vehicle Interference	143	274	131	91.6	2	7	5	250.0	1.4	2.6	1.2
- Theft	2912	2596	-316	-10.9	987	800	-187	-18.9	33.9	30.8	-3.1
- Theft from the Person	194	183	-11	-5.7	9	2	-7	-77.8	4.6	1.1	-3.5
- Theft of Pedal Cycle	230	196	-34	-14.8	10	8	-2	-20.0	4.3	4.1	-0.3
- Shoplifting	1096	1048	-48	-4.4	795	651	-144	-18.1	72.5	62.1	-10.4
- Other Theft	1392	1169	-223	-16.0	173	139	-34	-19.7	12.4	11.9	-0.5
Criminal Damage inc. Arson	1777	1962	185	10.4	249	198	-51	-20.5	14.0	10.1	-3.9
- Criminal Damage	1722	1912	190	11.0	241	194	-47	-19.5	14.0	10.1	-3.8
- Arson	55	50	-5	-9.1	8	4	-4	-50.0	14.5	8.0	-6.5
Racial/Religiously Aggravated Offences	103	93	-10	-9.7	29	29	0	0.0	28.2	31.2	3.0
State Based Crime	Offences				Outcomes				Solved Rates %		
Crime Type	2014	2015	# diff.	% diff.	2014	2015	# diff.	% diff.	2014	2015	% pt. diff.
Drug Offences	640	401	-239	-37.3	622	390	-232	-37.3	97.2	97.3	0.1
- Trafficking of Drugs	104	80	-24	-23.1	97	86	-11	-11.3	93.3	107.5	14.2
- Possession of Drugs	536	321	-215	-40.1	525	304	-221	-42.1	97.9	94.7	-3.2
Possession of Weapons	78	82	4	5.1	59	50	-9	-15.3	75.6	61.0	-14.7
Public Order	411	545	134	32.6	187	175	-12	-6.4	45.5	32.1	-13.4
Miscellaneous Crimes against Society	116	181	65	56.0	81	68	-13	-16.0	69.8	37.6	-32.3

Corporate Services: Performance Summary
Essex Police Performance Summary

Thurrock
Cumulative Year to October

Top Level	Offences				Outcomes				Solved Rates %		
Crime Type	2014	2015	# diff.	% diff.	2014	2015	# diff.	% diff.	2014	2015	% pt. diff.
Anti-Social Behaviour (incidents)	3671	3521	-150	-4.1	-	-	-	-	-	-	-
All Crime (excl. Action (NFIB) Fraud)	6363	6983	620	9.7	1566	1383	-183	-11.7	24.6	19.8	-4.8
- State Based Crime	531	658	127	23.9	332	304	-28	-8.4	62.5	46.2	-16.3
- Victim Based Crime	5832	6325	493	8.5	1234	1079	-155	-12.6	21.2	17.1	-4.1
Victim Based Crime	Offences				Outcomes				Solved Rates %		
Crime Type	2014	2015	# diff.	% diff.	2014	2015	# diff.	% diff.	2014	2015	% pt. diff.
Violence Against the Person	1395	1658	263	18.9	442	458	16	3.6	31.7	27.6	-4.1
- Homicide	0	0	0	-	0	0	0	-	-	-	-
- Violence with Injury	633	688	55	8.7	223	216	-7	-3.1	35.2	31.4	-3.8
- Violence without Injury	762	970	208	27.3	219	242	23	10.5	28.7	24.9	-3.8
Sexual Offences	130	134	4	3.1	25	21	-4	-16.0	19.2	15.7	-3.6
- Rape	54	53	-1	-1.9	8	4	-4	-50.0	14.8	7.5	-7.3
- Rape - Under 16 yrs	18	19	1	5.6	6	3	-3	-50.0	33.3	15.8	-17.5
- Rape - Over 16 yrs	36	34	-2	-5.6	2	1	-1	-50.0	5.6	2.9	-2.6
- Other Sexual Offences	76	81	5	6.6	17	17	0	0.0	22.4	21.0	-1.4
Robbery	71	61	-10	-14.1	19	19	0	0.0	26.8	31.1	4.4
- Robbery of business property	16	8	-8	-50.0	4	5	1	25.0	25.0	62.5	37.5
- Robbery of Personal Property	55	53	-2	-3.6	15	14	-1	-6.7	27.3	26.4	-0.9
Theft Offences	3409	3482	73	2.1	613	469	-144	-23.5	18.0	13.5	-4.5
- Burglary	754	736	-18	-2.4	80	55	-25	-31.3	10.6	7.5	-3.1
- Dwelling Burglary	429	374	-55	-12.8	53	43	-10	-18.9	12.4	11.5	-0.9
- Other Burglary	325	362	37	11.4	27	12	-15	-55.6	8.3	3.3	-5.0
- Vehicle Offences (incl. Interference)	947	968	21	2.2	70	23	-47	-67.1	7.4	2.4	-5.0
- Theft from Vehicle	562	577	15	2.7	28	3	-25	-89.3	5.0	0.5	-4.5
- Theft of Motor Vehicle	308	325	17	5.5	39	19	-20	-51.3	12.7	5.8	-6.8
- Vehicle Interference	77	66	-11	-14.3	3	1	-2	-66.7	3.9	1.5	-2.4
- Theft	1708	1778	70	4.1	463	391	-72	-15.6	27.1	22.0	-5.1
- Theft from the Person	67	89	22	32.8	1	3	2	200.0	1.5	3.4	1.9
- Theft of Pedal Cycle	160	176	16	10.0	7	3	-4	-57.1	4.4	1.7	-2.7
- Shoplifting	666	719	53	8.0	377	310	-67	-17.8	56.6	43.1	-13.5
- Other Theft	815	794	-21	-2.6	78	75	-3	-3.8	9.6	9.4	-0.1
Criminal Damage inc. Arson	827	990	163	19.7	135	112	-23	-17.0	16.3	11.3	-5.0
- Criminal Damage	800	933	133	16.6	132	104	-28	-21.2	16.5	11.1	-5.4
- Arson	27	57	30	111.1	3	8	5	166.7	11.1	14.0	2.9
Racial/Religiously Aggravated Offences	83	76	-7	-8.4	22	9	-13	-59.1	26.5	11.8	-14.7
State Based Crime	Offences				Outcomes				Solved Rates %		
Crime Type	2014	2015	# diff.	% diff.	2014	2015	# diff.	% diff.	2014	2015	% pt. diff.
Drug Offences	166	183	17	10.2	157	145	-12	-7.6	94.6	79.2	-15.3
- Trafficking of Drugs	34	35	1	2.9	25	19	-6	-24.0	73.5	54.3	-19.2
- Possession of Drugs	132	148	16	12.1	132	126	-6	-4.5	100.0	85.1	-14.9
Possession of Weapons	45	58	13	28.9	32	35	3	9.4	71.1	60.3	-10.8
Public Order	245	320	75	30.6	103	85	-18	-17.5	42.0	26.6	-15.5
Miscellaneous Crimes against Society	75	97	22	29.3	40	39	-1	-2.5	53.3	40.2	-13.1

Corporate Services: Performance Summary
Essex Police Performance Summary

Thurrock
Rolling 12 Months to October

Top Level	Offences				Outcomes				Solved Rates %		
Crime Type	2014	2015	# diff.	% diff.	2014	2015	# diff.	% diff.	2014	2015	% pt. diff.
Anti-Social Behaviour (incidents)	5589	5725	136	2.4	-	-	-	-	-	-	-
All Crime (excl. Action (NFIB) Fraud)	10909	11575	666	6.1	2761	2425	-336	-12.2	25.3	21.0	-4.4
- State Based Crime	908	1004	96	10.6	612	510	-102	-16.7	67.4	50.8	-16.6
- Victim Based Crime	10001	10571	570	5.7	2149	1915	-234	-10.9	21.5	18.1	-3.4
Victim Based Crime	Offences				Outcomes				Solved Rates %		
Crime Type	2014	2015	# diff.	% diff.	2014	2015	# diff.	% diff.	2014	2015	% pt. diff.
Violence Against the Person	2263	2628	365	16.1	753	780	27	3.6	33.3	29.7	-3.6
- Homicide	2	0	-2	-100.0	2	0	-2	-100.0	100.0	-	-
- Violence with Injury	1025	1080	55	5.4	367	364	-3	-0.8	35.8	33.7	-2.1
- Violence without Injury	1236	1548	312	25.2	384	416	32	8.3	31.1	26.9	-4.2
Sexual Offences	209	251	42	20.1	38	38	0	0.0	18.2	15.1	-3.0
- Rape	80	96	16	20.0	14	10	-4	-28.6	17.5	10.4	-7.1
- Rape - Under 16 yrs	25	39	14	56.0	11	6	-5	-45.5	44.0	15.4	-28.6
- Rape - Over 16 yrs	55	57	2	3.6	3	4	1	33.3	5.5	7.0	1.6
- Other Sexual Offences	129	155	26	20.2	24	28	4	16.7	18.6	18.1	-0.5
Robbery	124	101	-23	-18.5	32	25	-7	-21.9	25.8	24.8	-1.1
- Robbery of business property	22	16	-6	-27.3	5	6	1	20.0	22.7	37.5	14.8
- Robbery of Personal Property	102	85	-17	-16.7	27	19	-8	-29.6	26.5	22.4	-4.1
Theft Offences	5952	6000	48	0.8	1100	886	-214	-19.5	18.5	14.8	-3.7
- Burglary	1413	1398	-15	-1.1	114	125	11	9.6	8.1	8.9	0.9
- Dwelling Burglary	796	755	-41	-5.2	69	99	30	43.5	8.7	13.1	4.4
- Other Burglary	617	643	26	4.2	45	26	-19	-42.2	7.3	4.0	-3.2
- Vehicle Offences (incl. Interference)	1683	1705	22	1.3	105	64	-41	-39.0	6.2	3.8	-2.5
- Theft from Vehicle	1074	1034	-40	-3.7	38	11	-27	-71.1	3.5	1.1	-2.5
- Theft of Motor Vehicle	504	516	12	2.4	64	46	-18	-28.1	12.7	8.9	-3.8
- Vehicle Interference	105	155	50	47.6	3	7	4	133.3	2.9	4.5	1.7
- Theft	2856	2897	41	1.4	881	697	-184	-20.9	30.8	24.1	-6.8
- Theft from the Person	117	142	25	21.4	2	3	1	50.0	1.7	2.1	0.4
- Theft of Pedal Cycle	236	251	15	6.4	11	8	-3	-27.3	4.7	3.2	-1.5
- Shoplifting	1172	1184	12	1.0	698	546	-152	-21.8	59.6	46.1	-13.4
- Other Theft	1331	1320	-11	-0.8	170	140	-30	-17.6	12.8	10.6	-2.2
Criminal Damage inc. Arson	1453	1591	138	9.5	226	186	-40	-17.7	15.6	11.7	-3.9
- Criminal Damage	1400	1515	115	8.2	220	176	-44	-20.0	15.7	11.6	-4.1
- Arson	53	76	23	43.4	6	10	4	66.7	11.3	13.2	1.8
Racial/Religiously Aggravated Offences	142	147	5	3.5	34	25	-9	-26.5	23.9	17.0	-6.9
State Based Crime	Offences				Outcomes				Solved Rates %		
Crime Type	2014	2015	# diff.	% diff.	2014	2015	# diff.	% diff.	2014	2015	% pt. diff.
Drug Offences	310	306	-4	-1.3	290	261	-29	-10.0	93.5	85.3	-8.3
- Trafficking of Drugs	65	49	-16	-24.6	48	32	-16	-33.3	73.8	65.3	-8.5
- Possession of Drugs	245	257	12	4.9	242	229	-13	-5.4	98.8	89.1	-9.7
Possession of Weapons	69	82	13	18.8	54	51	-3	-5.6	78.3	62.2	-16.1
Public Order	384	477	93	24.2	177	143	-34	-19.2	46.1	30.0	-16.1
Miscellaneous Crimes against Society	145	139	-6	-4.1	91	55	-36	-39.6	62.8	39.6	-23.2

Corporate Services: Performance Summary
Essex Police Performance Summary

Epping
Cumulative Year to October

Top Level	Offences				Outcomes				Solved Rates %		
Crime Type	2014	2015	# diff.	% diff.	2014	2015	# diff.	% diff.	2014	2015	% pt. diff.
Anti-Social Behaviour (incidents)	2436	2301	-135	-5.5	-	-	-	-	-	-	-
All Crime (excl. Action (NFIB) Fraud)	3971	4494	523	13.2	749	631	-118	-15.8	18.9	14.0	-4.8
- State Based Crime	368	447	79	21.5	198	172	-26	-13.1	53.8	38.5	-15.3
- Victim Based Crime	3603	4047	444	12.3	551	459	-92	-16.7	15.3	11.3	-4.0
Victim Based Crime	Offences				Outcomes				Solved Rates %		
Crime Type	2014	2015	# diff.	% diff.	2014	2015	# diff.	% diff.	2014	2015	% pt. diff.
Violence Against the Person	804	999	195	24.3	245	185	-60	-24.5	30.5	18.5	-12.0
- Homicide	0	0	0	-	0	0	0	-	-	-	-
- Violence with Injury	366	396	30	8.2	123	85	-38	-30.9	33.6	21.5	-12.1
- Violence without Injury	438	603	165	37.7	122	100	-22	-18.0	27.9	16.6	-11.3
Sexual Offences	76	76	0	0.0	11	10	-1	-9.1	14.5	13.2	-1.3
- Rape	36	24	-12	-33.3	2	5	3	150.0	5.6	20.8	15.3
- Rape - Under 16 yrs	11	10	-1	-9.1	1	0	-1	-100.0	9.1	0.0	-9.1
- Rape - Over 16 yrs	25	14	-11	-44.0	1	5	4	400.0	4.0	35.7	31.7
- Other Sexual Offences	40	52	12	30.0	9	5	-4	-44.4	22.5	9.6	-12.9
Robbery	52	45	-7	-13.5	11	5	-6	-54.5	21.2	11.1	-10.0
- Robbery of business property	1	2	1	100.0	0	1	1	-	0.0	50.0	50.0
- Robbery of Personal Property	51	43	-8	-15.7	11	4	-7	-63.6	21.6	9.3	-12.3
Theft Offences	2128	2432	304	14.3	210	196	-14	-6.7	9.9	8.1	-1.8
- Burglary	633	690	57	9.0	32	38	6	18.8	5.1	5.5	0.5
- Dwelling Burglary	390	406	16	4.1	26	28	2	7.7	6.7	6.9	0.2
- Other Burglary	243	284	41	16.9	6	10	4	66.7	2.5	3.5	1.1
- Vehicle Offences (incl. Interference)	564	786	222	39.4	14	85	71	507.1	2.5	10.8	8.3
- Theft from Vehicle	320	477	157	49.1	3	59	56	1866.7	0.9	12.4	11.4
- Theft of Motor Vehicle	194	237	43	22.2	6	21	15	250.0	3.1	8.9	5.8
- Vehicle Interference	50	72	22	44.0	5	5	0	0.0	10.0	6.9	-3.1
- Theft	931	956	25	2.7	164	73	-91	-55.5	17.6	7.6	-10.0
- Theft from the Person	50	38	-12	-24.0	1	0	-1	-100.0	2.0	0.0	-2.0
- Theft of Pedal Cycle	36	59	23	63.9	2	2	0	0.0	5.6	3.4	-2.2
- Shoplifting	284	276	-8	-2.8	94	56	-38	-40.4	33.1	20.3	-12.8
- Other Theft	561	583	22	3.9	67	15	-52	-77.6	11.9	2.6	-9.4
Criminal Damage inc. Arson	543	495	-48	-8.8	74	63	-11	-14.9	13.6	12.7	-0.9
- Criminal Damage	528	479	-49	-9.3	74	62	-12	-16.2	14.0	12.9	-1.1
- Arson	15	16	1	6.7	0	1	1	-	0.0	6.3	6.3
Racial/Religiously Aggravated Offences	43	46	3	7.0	14	6	-8	-57.1	32.6	13.0	-19.5
State Based Crime	Offences				Outcomes				Solved Rates %		
Crime Type	2014	2015	# diff.	% diff.	2014	2015	# diff.	% diff.	2014	2015	% pt. diff.
Drug Offences	86	115	29	33.7	71	100	29	40.8	82.6	87.0	4.4
- Trafficking of Drugs	12	16	4	33.3	8	10	2	25.0	66.7	62.5	-4.2
- Possession of Drugs	74	99	25	33.8	63	90	27	42.9	85.1	90.9	5.8
Possession of Weapons	20	23	3	15.0	11	15	4	36.4	55.0	65.2	10.2
Public Order	204	236	32	15.7	93	40	-53	-57.0	45.6	16.9	-28.6
Miscellaneous Crimes against Society	58	73	15	25.9	23	17	-6	-26.1	39.7	23.3	-16.4

Corporate Services: Performance Summary
Essex Police Performance Summary

Epping

Rolling 12 Months to October

Top Level	Offences				Outcomes				Solved Rates %		
Crime Type	2014	2015	# diff.	% diff.	2014	2015	# diff.	% diff.	2014	2015	% pt. diff.
Anti-Social Behaviour (incidents)	3508	3615	107	3.1	-	-	-	-	-	-	-
All Crime (excl. Action (NFIB) Fraud)	6691	7206	515	7.7	1352	1113	-239	-17.7	20.2	15.4	-4.8
- State Based Crime	616	673	57	9.3	398	304	-94	-23.6	64.6	45.2	-19.4
- Victim Based Crime	6075	6533	458	7.5	954	809	-145	-15.2	15.7	12.4	-3.3
Victim Based Crime	Offences				Outcomes				Solved Rates %		
Crime Type	2014	2015	# diff.	% diff.	2014	2015	# diff.	% diff.	2014	2015	% pt. diff.
Violence Against the Person	1302	1571	269	20.7	430	345	-85	-19.8	33.0	22.0	-11.1
- Homicide	0	0	0	-	0	0	0	-	-	-	-
- Violence with Injury	580	624	44	7.6	203	155	-48	-23.6	35.0	24.8	-10.2
- Violence without Injury	722	947	225	31.2	227	190	-37	-16.3	31.4	20.1	-11.4
Sexual Offences	107	131	24	22.4	12	19	7	58.3	11.2	14.5	3.3
- Rape	42	42	0	0.0	2	8	6	300.0	4.8	19.0	14.3
- Rape - Under 16 yrs	11	14	3	27.3	1	0	-1	-100.0	9.1	0.0	-9.1
- Rape - Over 16 yrs	31	28	-3	-9.7	1	8	7	700.0	3.2	28.6	25.3
- Other Sexual Offences	65	89	24	36.9	10	11	1	10.0	15.4	12.4	-3.0
Robbery	81	80	-1	-1.2	15	14	-1	-6.7	18.5	17.5	-1.0
- Robbery of business property	1	4	3	300.0	0	1	1	-	0.0	25.0	25.0
- Robbery of Personal Property	80	76	-4	-5.0	15	13	-2	-13.3	18.8	17.1	-1.6
Theft Offences	3694	3908	214	5.8	369	329	-40	-10.8	10.0	8.4	-1.6
- Burglary	1076	1152	76	7.1	56	77	21	37.5	5.2	6.7	1.5
- Dwelling Burglary	664	748	84	12.7	44	66	22	50.0	6.6	8.8	2.2
- Other Burglary	412	404	-8	-1.9	12	11	-1	-8.3	2.9	2.7	-0.2
- Vehicle Offences (incl. Interference)	1052	1263	211	20.1	27	96	69	255.6	2.6	7.6	5.0
- Theft from Vehicle	647	757	110	17.0	5	61	56	1120.0	0.8	8.1	7.3
- Theft of Motor Vehicle	321	390	69	21.5	17	29	12	70.6	5.3	7.4	2.1
- Vehicle Interference	84	116	32	38.1	5	6	1	20.0	6.0	5.2	-0.8
- Theft	1566	1493	-73	-4.7	286	156	-130	-45.5	18.3	10.4	-7.8
- Theft from the Person	91	69	-22	-24.2	2	0	-2	-100.0	2.2	0.0	-2.2
- Theft of Pedal Cycle	53	74	21	39.6	2	3	1	50.0	3.8	4.1	0.3
- Shoplifting	442	452	10	2.3	156	103	-53	-34.0	35.3	22.8	-12.5
- Other Theft	980	898	-82	-8.4	126	50	-76	-60.3	12.9	5.6	-7.3
Criminal Damage inc. Arson	891	843	-48	-5.4	128	102	-26	-20.3	14.4	12.1	-2.3
- Criminal Damage	871	814	-57	-6.5	128	101	-27	-21.1	14.7	12.4	-2.3
- Arson	20	29	9	45.0	0	1	1	-	0.0	3.4	3.4
Racial/Religiously Aggravated Offences	66	79	13	19.7	22	12	-10	-45.5	33.3	15.2	-18.1
State Based Crime	Offences				Outcomes				Solved Rates %		
Crime Type	2014	2015	# diff.	% diff.	2014	2015	# diff.	% diff.	2014	2015	% pt. diff.
Drug Offences	164	185	21	12.8	156	162	6	3.8	95.1	87.6	-7.6
- Trafficking of Drugs	19	24	5	26.3	15	13	-2	-13.3	78.9	54.2	-24.8
- Possession of Drugs	145	161	16	11.0	141	149	8	5.7	97.2	92.5	-4.7
Possession of Weapons	34	41	7	20.6	24	28	4	16.7	70.6	68.3	-2.3
Public Order	330	341	11	3.3	174	82	-92	-52.9	52.7	24.0	-28.7
Miscellaneous Crimes against Society	88	106	18	20.5	44	32	-12	-27.3	50.0	30.2	-19.8

Corporate Services: Performance Summary
Essex Police Performance Summary

Harlow

Cumulative Year to October

Top Level	Offences				Outcomes				Solved Rates %		
Crime Type	2014	2015	# diff.	% diff.	2014	2015	# diff.	% diff.	2014	2015	% pt. diff.
Anti-Social Behaviour (incidents)	2717	2363	-354	-13.0	-	-	-	-	-	-	-
All Crime (excl. Action (NFIB) Fraud)	3851	4211	360	9.3	1302	1038	-264	-20.3	33.8	24.6	-9.2
- State Based Crime	479	422	-57	-11.9	358	233	-125	-34.9	74.7	55.2	-19.5
- Victim Based Crime	3372	3789	417	12.4	944	805	-139	-14.7	28.0	21.2	-6.7
Victim Based Crime	Offences				Outcomes				Solved Rates %		
Crime Type	2014	2015	# diff.	% diff.	2014	2015	# diff.	% diff.	2014	2015	% pt. diff.
Violence Against the Person	849	1077	228	26.9	333	302	-31	-9.3	39.2	28.0	-11.2
- Homicide	0	2	2	-	0	0	0	-	-	0.0	-
- Violence with Injury	382	421	39	10.2	142	135	-7	-4.9	37.2	32.1	-5.1
- Violence without Injury	467	654	187	40.0	191	167	-24	-12.6	40.9	25.5	-15.4
Sexual Offences	73	120	47	64.4	11	16	5	45.5	15.1	13.3	-1.7
- Rape	26	30	4	15.4	4	3	-1	-25.0	15.4	10.0	-5.4
- Rape - Under 16 yrs	7	5	-2	-28.6	1	1	0	0.0	14.3	20.0	5.7
- Rape - Over 16 yrs	19	25	6	31.6	3	2	-1	-33.3	15.8	8.0	-7.8
- Other Sexual Offences	47	90	43	91.5	7	13	6	85.7	14.9	14.4	-0.4
Robbery	55	40	-15	-27.3	8	9	1	12.5	14.5	22.5	8.0
- Robbery of business property	3	2	-1	-33.3	0	1	1	-	0.0	50.0	50.0
- Robbery of Personal Property	52	38	-14	-26.9	8	8	0	0.0	15.4	21.1	5.7
Theft Offences	1887	2051	164	8.7	494	418	-76	-15.4	26.2	20.4	-5.8
- Burglary	387	359	-28	-7.2	43	15	-28	-65.1	11.1	4.2	-6.9
- Dwelling Burglary	211	164	-47	-22.3	36	9	-27	-75.0	17.1	5.5	-11.6
- Other Burglary	176	195	19	10.8	7	6	-1	-14.3	4.0	3.1	-0.9
- Vehicle Offences (incl. Interference)	318	589	271	85.2	26	108	82	315.4	8.2	18.3	10.2
- Theft from Vehicle	221	413	192	86.9	11	87	76	690.9	5.0	21.1	16.1
- Theft of Motor Vehicle	63	115	52	82.5	15	12	-3	-20.0	23.8	10.4	-13.4
- Vehicle Interference	34	61	27	79.4	0	9	9	-	0.0	14.8	14.8
- Theft	1182	1103	-79	-6.7	425	295	-130	-30.6	36.0	26.7	-9.2
- Theft from the Person	51	58	7	13.7	0	1	1	-	0.0	1.7	1.7
- Theft of Pedal Cycle	65	80	15	23.1	1	1	0	0.0	1.5	1.3	-0.3
- Shoplifting	655	549	-106	-16.2	380	260	-120	-31.6	58.0	47.4	-10.7
- Other Theft	411	416	5	1.2	44	33	-11	-25.0	10.7	7.9	-2.8
Criminal Damage inc. Arson	508	501	-7	-1.4	98	60	-38	-38.8	19.3	12.0	-7.3
- Criminal Damage	487	481	-6	-1.2	94	60	-34	-36.2	19.3	12.5	-6.8
- Arson	21	20	-1	-4.8	4	0	-4	-100.0	19.0	0.0	-19.0
Racial/Religiously Aggravated Offences	49	28	-21	-42.9	18	15	-3	-16.7	36.7	53.6	16.8
State Based Crime	Offences				Outcomes				Solved Rates %		
Crime Type	2014	2015	# diff.	% diff.	2014	2015	# diff.	% diff.	2014	2015	% pt. diff.
Drug Offences	187	136	-51	-27.3	178	117	-61	-34.3	95.2	86.0	-9.2
- Trafficking of Drugs	52	27	-25	-48.1	48	19	-29	-60.4	92.3	70.4	-21.9
- Possession of Drugs	135	109	-26	-19.3	130	98	-32	-24.6	96.3	89.9	-6.4
Possession of Weapons	21	29	8	38.1	20	22	2	10.0	95.2	75.9	-19.4
Public Order	232	201	-31	-13.4	134	78	-56	-41.8	57.8	38.8	-19.0
Miscellaneous Crimes against Society	39	56	17	43.6	26	16	-10	-38.5	66.7	28.6	-38.1

Corporate Services: Performance Summary
Essex Police Performance Summary

Harlow

Rolling 12 Months to October

Top Level	Offences				Outcomes				Solved Rates %		
Crime Type	2014	2015	# diff.	% diff.	2014	2015	# diff.	% diff.	2014	2015	% pt. diff.
Anti-Social Behaviour (incidents)	4029	3995	-34	-0.8	-	-	-	-	-	-	-
All Crime (excl. Action (NFIB) Fraud)	6529	7112	583	8.9	2292	1862	-430	-18.8	35.1	26.2	-8.9
- State Based Crime	787	678	-109	-13.9	612	409	-203	-33.2	77.8	60.3	-17.4
- Victim Based Crime	5742	6434	692	12.1	1680	1453	-227	-13.5	29.3	22.6	-6.7
Victim Based Crime	Offences				Outcomes				Solved Rates %		
Crime Type	2014	2015	# diff.	% diff.	2014	2015	# diff.	% diff.	2014	2015	% pt. diff.
Violence Against the Person	1410	1715	305	21.6	579	542	-37	-6.4	41.1	31.6	-9.5
- Homicide	0	2	2	-	0	0	0	-	-	0.0	-
- Violence with Injury	633	695	62	9.8	246	235	-11	-4.5	38.9	33.8	-5.0
- Violence without Injury	777	1018	241	31.0	333	307	-26	-7.8	42.9	30.2	-12.7
Sexual Offences	118	199	81	68.6	22	27	5	22.7	18.6	13.6	-5.1
- Rape	42	60	18	42.9	8	8	0	0.0	19.0	13.3	-5.7
- Rape - Under 16 yrs	13	17	4	30.8	4	2	-2	-50.0	30.8	11.8	-19.0
- Rape - Over 16 yrs	29	43	14	48.3	4	6	2	50.0	13.8	14.0	0.2
- Other Sexual Offences	76	139	63	82.9	14	19	5	35.7	18.4	13.7	-4.8
Robbery	86	86	0	0.0	14	17	3	21.4	16.3	19.8	3.5
- Robbery of business property	3	7	4	133.3	0	1	1	-	0.0	14.3	14.3
- Robbery of Personal Property	83	79	-4	-4.8	14	16	2	14.3	16.9	20.3	3.4
Theft Offences	3295	3551	256	7.8	877	747	-130	-14.8	26.6	21.0	-5.6
- Burglary	670	667	-3	-0.4	85	56	-29	-34.1	12.7	8.4	-4.3
- Dwelling Burglary	370	298	-72	-19.5	69	39	-30	-43.5	18.6	13.1	-5.6
- Other Burglary	300	369	69	23.0	16	17	1	6.3	5.3	4.6	-0.7
- Vehicle Offences (incl. Interference)	604	973	369	61.1	41	122	81	197.6	6.8	12.5	5.8
- Theft from Vehicle	441	667	226	51.2	19	91	72	378.9	4.3	13.6	9.3
- Theft of Motor Vehicle	116	215	99	85.3	22	21	-1	-4.5	19.0	9.8	-9.2
- Vehicle Interference	47	91	44	93.6	0	10	10	-	0.0	11.0	11.0
- Theft	2021	1911	-110	-5.4	751	569	-182	-24.2	37.2	29.8	-7.4
- Theft from the Person	101	92	-9	-8.9	3	2	-1	-33.3	3.0	2.2	-0.8
- Theft of Pedal Cycle	118	132	14	11.9	3	6	3	100.0	2.5	4.5	2.0
- Shoplifting	1107	1011	-96	-8.7	661	492	-169	-25.6	59.7	48.7	-11.0
- Other Theft	695	676	-19	-2.7	84	69	-15	-17.9	12.1	10.2	-1.9
Criminal Damage inc. Arson	833	883	50	6.0	188	120	-68	-36.2	22.6	13.6	-9.0
- Criminal Damage	805	849	44	5.5	183	119	-64	-35.0	22.7	14.0	-8.7
- Arson	28	34	6	21.4	5	1	-4	-80.0	17.9	2.9	-14.9
Racial/Religiously Aggravated Offences	70	62	-8	-11.4	31	25	-6	-19.4	44.3	40.3	-4.0
State Based Crime	Offences				Outcomes				Solved Rates %		
Crime Type	2014	2015	# diff.	% diff.	2014	2015	# diff.	% diff.	2014	2015	% pt. diff.
Drug Offences	344	224	-120	-34.9	326	213	-113	-34.7	94.8	95.1	0.3
- Trafficking of Drugs	132	32	-100	-75.8	121	31	-90	-74.4	91.7	96.9	5.2
- Possession of Drugs	212	192	-20	-9.4	205	182	-23	-11.2	96.7	94.8	-1.9
Possession of Weapons	36	52	16	44.4	32	41	9	28.1	88.9	78.8	-10.0
Public Order	345	304	-41	-11.9	215	124	-91	-42.3	62.3	40.8	-21.5
Miscellaneous Crimes against Society	62	98	36	58.1	39	31	-8	-20.5	62.9	31.6	-31.3

Corporate Services: Performance Summary
Essex Police Performance Summary

Brentwood
Cumulative Year to October

Top Level	Offences				Outcomes				Solved Rates %		
Crime Type	2014	2015	# diff.	% diff.	2014	2015	# diff.	% diff.	2014	2015	% pt. diff.
Anti-Social Behaviour (incidents)	1184	1296	112	9.5	-	-	-	-	-	-	-
All Crime (excl. Action (NFIB) Fraud)	1995	2197	202	10.1	464	318	-146	-31.5	23.3	14.5	-8.8
- State Based Crime	138	140	2	1.4	95	57	-38	-40.0	68.8	40.7	-28.1
- Victim Based Crime	1857	2057	200	10.8	369	261	-108	-29.3	19.9	12.7	-7.2
Victim Based Crime	Offences				Outcomes				Solved Rates %		
Crime Type	2014	2015	# diff.	% diff.	2014	2015	# diff.	% diff.	2014	2015	% pt. diff.
Violence Against the Person	374	412	38	10.2	134	90	-44	-32.8	35.8	21.8	-14.0
- Homicide	1	1	0	0.0	1	0	-1	-100.0	100.0	0.0	-100.0
- Violence with Injury	147	170	23	15.6	56	37	-19	-33.9	38.1	21.8	-16.3
- Violence without Injury	226	241	15	6.6	77	53	-24	-31.2	34.1	22.0	-12.1
Sexual Offences	32	45	13	40.6	13	2	-11	-84.6	40.6	4.4	-36.2
- Rape	8	13	5	62.5	3	1	-2	-66.7	37.5	7.7	-29.8
- Rape - Under 16 yrs	3	3	0	0.0	3	0	-3	-100.0	100.0	0.0	-100.0
- Rape - Over 16 yrs	5	10	5	100.0	0	1	1	-	0.0	10.0	10.0
- Other Sexual Offences	24	32	8	33.3	10	1	-9	-90.0	41.7	3.1	-38.5
Robbery	12	19	7	58.3	1	6	5	500.0	8.3	31.6	23.2
- Robbery of business property	1	3	2	200.0	0	2	2	-	0.0	66.7	66.7
- Robbery of Personal Property	11	16	5	45.5	1	4	3	300.0	9.1	25.0	15.9
Theft Offences	1191	1291	100	8.4	186	140	-46	-24.7	15.6	10.8	-4.8
- Burglary	346	332	-14	-4.0	67	55	-12	-17.9	19.4	16.6	-2.8
- Dwelling Burglary	222	216	-6	-2.7	62	45	-17	-27.4	27.9	20.8	-7.1
- Other Burglary	124	116	-8	-6.5	5	10	5	100.0	4.0	8.6	4.6
- Vehicle Offences (incl. Interference)	337	459	122	36.2	12	16	4	33.3	3.6	3.5	-0.1
- Theft from Vehicle	226	290	64	28.3	6	6	0	0.0	2.7	2.1	-0.6
- Theft of Motor Vehicle	84	115	31	36.9	6	5	-1	-16.7	7.1	4.3	-2.8
- Vehicle Interference	27	54	27	100.0	0	5	5	-	0.0	9.3	9.3
- Theft	508	500	-8	-1.6	107	69	-38	-35.5	21.1	13.8	-7.3
- Theft from the Person	15	38	23	153.3	1	0	-1	-100.0	6.7	0.0	-6.7
- Theft of Pedal Cycle	48	35	-13	-27.1	1	2	1	100.0	2.1	5.7	3.6
- Shoplifting	109	131	22	20.2	67	46	-21	-31.3	61.5	35.1	-26.4
- Other Theft	336	296	-40	-11.9	38	21	-17	-44.7	11.3	7.1	-4.2
Criminal Damage inc. Arson	248	290	42	16.9	35	23	-12	-34.3	14.1	7.9	-6.2
- Criminal Damage	240	279	39	16.3	35	23	-12	-34.3	14.6	8.2	-6.3
- Arson	8	11	3	37.5	0	0	0	-	0.0	0.0	0.0
Racial/Religiously Aggravated Offences	21	10	-11	-52.4	5	3	-2	-40.0	23.8	30.0	6.2
State Based Crime	Offences				Outcomes				Solved Rates %		
Crime Type	2014	2015	# diff.	% diff.	2014	2015	# diff.	% diff.	2014	2015	% pt. diff.
Drug Offences	44	24	-20	-45.5	45	24	-21	-46.7	102.3	100.0	-2.3
- Trafficking of Drugs	3	8	5	166.7	4	7	3	75.0	133.3	87.5	-45.8
- Possession of Drugs	41	16	-25	-61.0	41	17	-24	-58.5	100.0	106.3	6.3
Possession of Weapons	8	10	2	25.0	6	9	3	50.0	75.0	90.0	15.0
Public Order	67	80	13	19.4	33	18	-15	-45.5	49.3	22.5	-26.8
Miscellaneous Crimes against Society	19	26	7	36.8	11	6	-5	-45.5	57.9	23.1	-34.8

Corporate Services: Performance Summary
Essex Police Performance Summary

Brentwood

Rolling 12 Months to October

Top Level	Offences				Outcomes				Solved Rates %		
Crime Type	2014	2015	# diff.	% diff.	2014	2015	# diff.	% diff.	2014	2015	% pt. diff.
Anti-Social Behaviour (incidents)	1763	2049	286	16.2	-	-	-	-	-	-	-
All Crime (excl. Action (NFIB) Fraud)	3434	3690	256	7.5	825	599	-226	-27.4	24.0	16.2	-7.8
- State Based Crime	267	229	-38	-14.2	203	127	-76	-37.4	76.0	55.5	-20.6
- Victim Based Crime	3167	3461	294	9.3	622	472	-150	-24.1	19.6	13.6	-6.0
Victim Based Crime	Offences				Outcomes				Solved Rates %		
Crime Type	2014	2015	# diff.	% diff.	2014	2015	# diff.	% diff.	2014	2015	% pt. diff.
Violence Against the Person	620	707	87	14.0	236	178	-58	-24.6	38.1	25.2	-12.9
- Homicide	1	1	0	0.0	1	0	-1	-100.0	100.0	0.0	-100.0
- Violence with Injury	275	296	21	7.6	109	75	-34	-31.2	39.6	25.3	-14.3
- Violence without Injury	344	410	66	19.2	126	103	-23	-18.3	36.6	25.1	-11.5
Sexual Offences	48	71	23	47.9	18	3	-15	-83.3	37.5	4.2	-33.3
- Rape	13	18	5	38.5	4	1	-3	-75.0	30.8	5.6	-25.2
- Rape - Under 16 yrs	5	5	0	0.0	4	0	-4	-100.0	80.0	0.0	-80.0
- Rape - Over 16 yrs	8	13	5	62.5	0	1	1	-	0.0	7.7	7.7
- Other Sexual Offences	35	53	18	51.4	14	2	-12	-85.7	40.0	3.8	-36.2
Robbery	22	25	3	13.6	2	10	8	400.0	9.1	40.0	30.9
- Robbery of business property	1	5	4	400.0	0	3	3	-	0.0	60.0	60.0
- Robbery of Personal Property	21	20	-1	-4.8	2	7	5	250.0	9.5	35.0	25.5
Theft Offences	2086	2207	121	5.8	311	238	-73	-23.5	14.9	10.8	-4.1
- Burglary	629	625	-4	-0.6	79	78	-1	-1.3	12.6	12.5	-0.1
- Dwelling Burglary	429	436	7	1.6	72	61	-11	-15.3	16.8	14.0	-2.8
- Other Burglary	200	189	-11	-5.5	7	17	10	142.9	3.5	9.0	5.5
- Vehicle Offences (incl. Interference)	587	767	180	30.7	20	29	9	45.0	3.4	3.8	0.4
- Theft from Vehicle	399	482	83	20.8	7	8	1	14.3	1.8	1.7	-0.1
- Theft of Motor Vehicle	153	200	47	30.7	13	16	3	23.1	8.5	8.0	-0.5
- Vehicle Interference	35	85	50	142.9	0	5	5	-	0.0	5.9	5.9
- Theft	870	815	-55	-6.3	212	131	-81	-38.2	24.4	16.1	-8.3
- Theft from the Person	37	55	18	48.6	1	1	0	0.0	2.7	1.8	-0.9
- Theft of Pedal Cycle	59	42	-17	-28.8	3	2	-1	-33.3	5.1	4.8	-0.3
- Shoplifting	241	212	-29	-12.0	141	82	-59	-41.8	58.5	38.7	-19.8
- Other Theft	533	506	-27	-5.1	67	46	-21	-31.3	12.6	9.1	-3.5
Criminal Damage inc. Arson	391	451	60	15.3	55	43	-12	-21.8	14.1	9.5	-4.5
- Criminal Damage	383	438	55	14.4	55	42	-13	-23.6	14.4	9.6	-4.8
- Arson	8	13	5	62.5	0	1	1	-	0.0	7.7	7.7
Racial/Religiously Aggravated Offences	31	16	-15	-48.4	8	6	-2	-25.0	25.8	37.5	11.7
State Based Crime	Offences				Outcomes				Solved Rates %		
Crime Type	2014	2015	# diff.	% diff.	2014	2015	# diff.	% diff.	2014	2015	% pt. diff.
Drug Offences	110	65	-45	-40.9	108	64	-44	-40.7	98.2	98.5	0.3
- Trafficking of Drugs	10	12	2	20.0	8	10	2	25.0	80.0	83.3	3.3
- Possession of Drugs	100	53	-47	-47.0	100	54	-46	-46.0	100.0	101.9	1.9
Possession of Weapons	11	14	3	27.3	9	13	4	44.4	81.8	92.9	11.0
Public Order	112	111	-1	-0.9	65	39	-26	-40.0	58.0	35.1	-22.9
Miscellaneous Crimes against Society	34	39	5	14.7	21	11	-10	-47.6	61.8	28.2	-33.6