

Corporate Services

Essex Police Performance Summary to November 2015



Date: 11th December 2015

Unit: Performance Information Unit

Contact: David Howard

Corporate Services: Performance Summary

Essex Police Performance Summary: To November 2015

1. Introduction

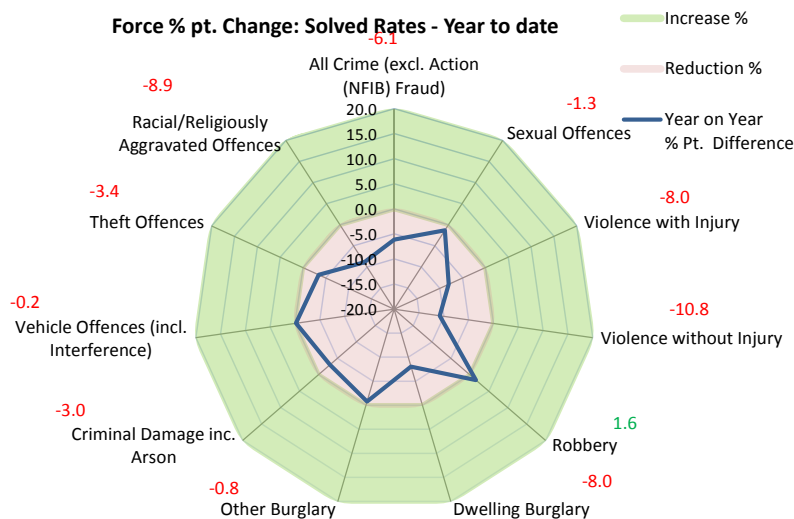
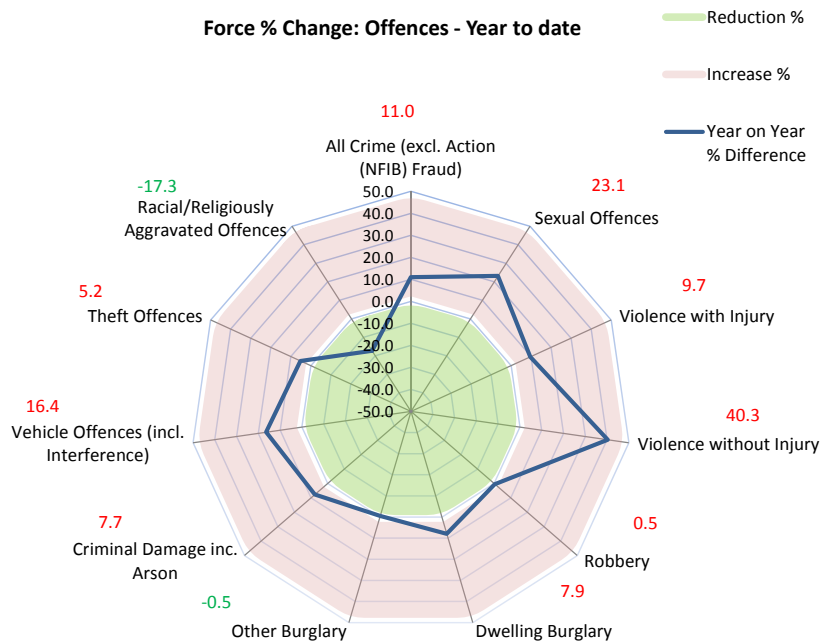
This performance summary is designed to pictorially represent how individual districts are performing within each crime type.

The report includes:

- Charts to show the cumulative (from April) percentage differences between the number of offences, and the percentage pt. differences between the solved rates, in each district, for the current period compared to the same period the previous year.
- Tables of data relating to both cumulative and rolling figures for this district.

Solved Rate: Essex Police could potentially still be under-extracting the number of crimes that have been solved.

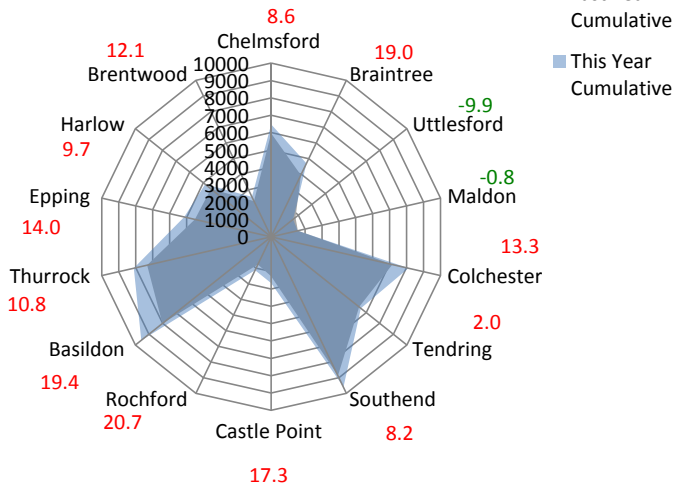
2. Current Position



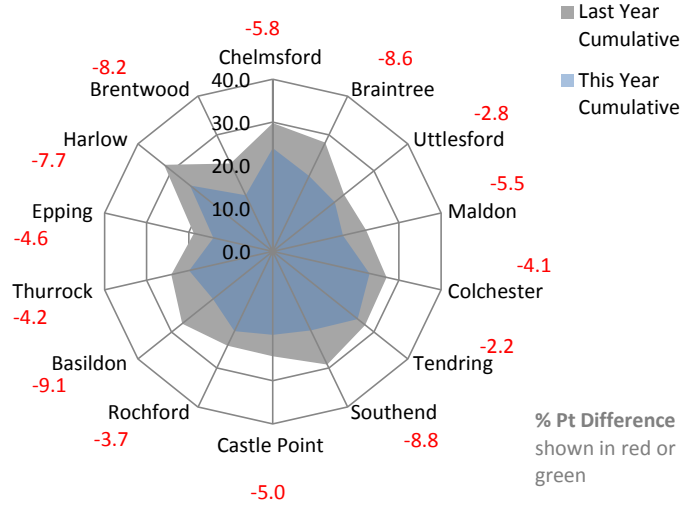
Corporate Services: Performance Summary

Essex Police Performance Summary: To November 2015

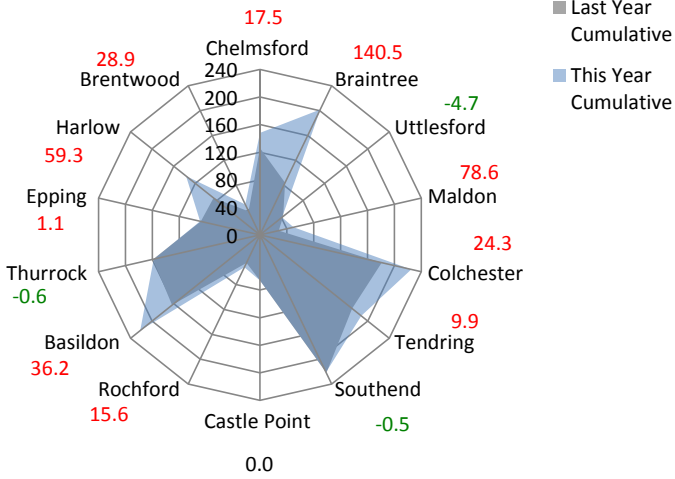
All Crime Offences - Year to date



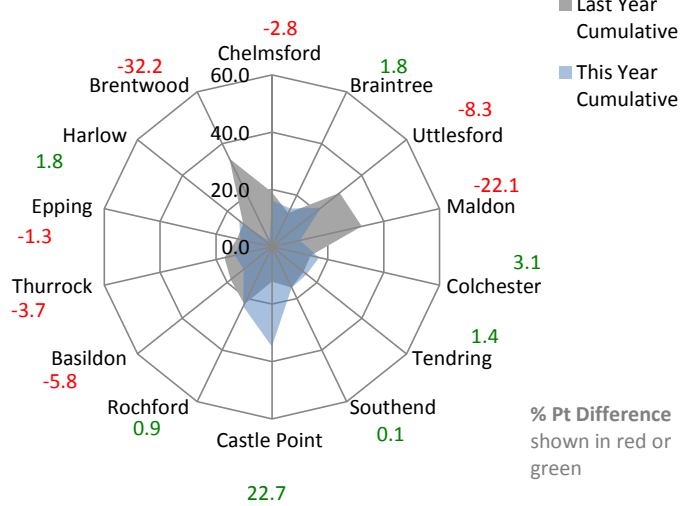
All Crime Solved Rate - Year to date



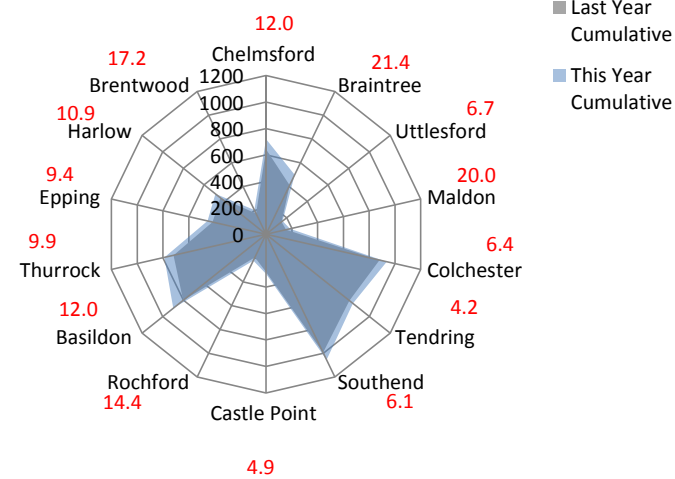
Sexual Offences - Year to date



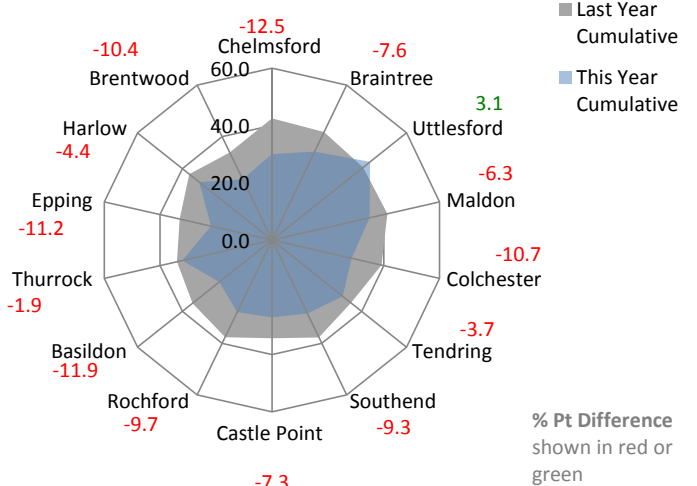
Sexual Offences Solved Rate - Year to date



Violence with Injury Offences - Year to date



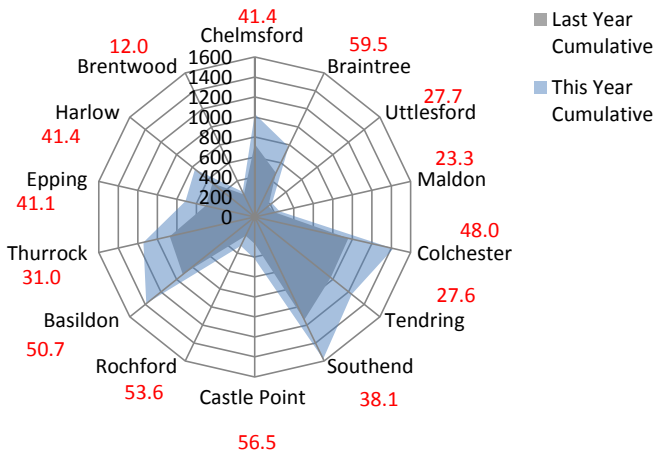
Violence with Injury Solved Rate - Year to date



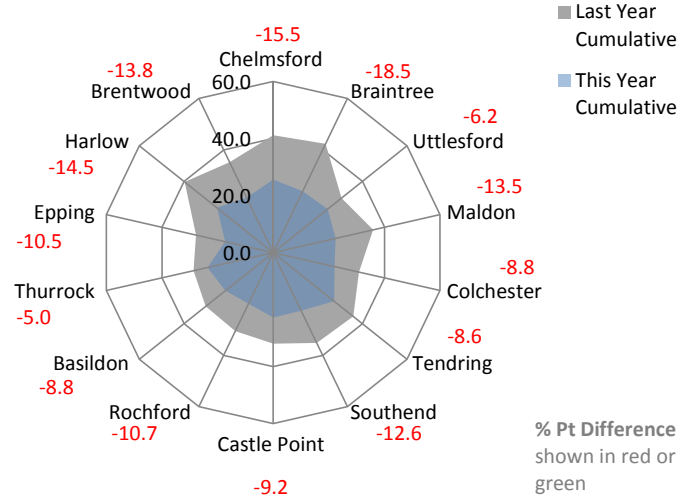
Corporate Services: Performance Summary

Essex Police Performance Summary: To November 2015

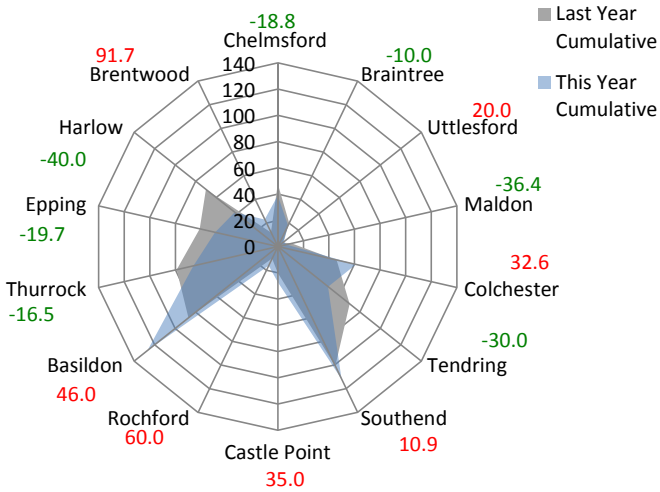
Violence without Injury Offences - Year to date



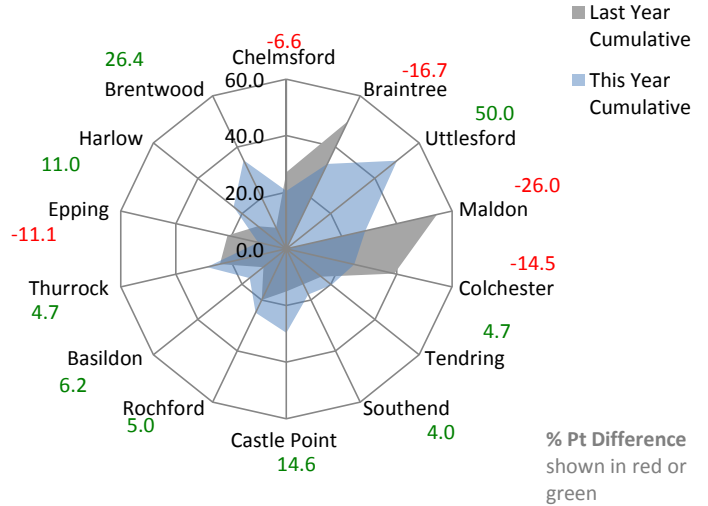
Violence without Injury Solved Rate - Year to date



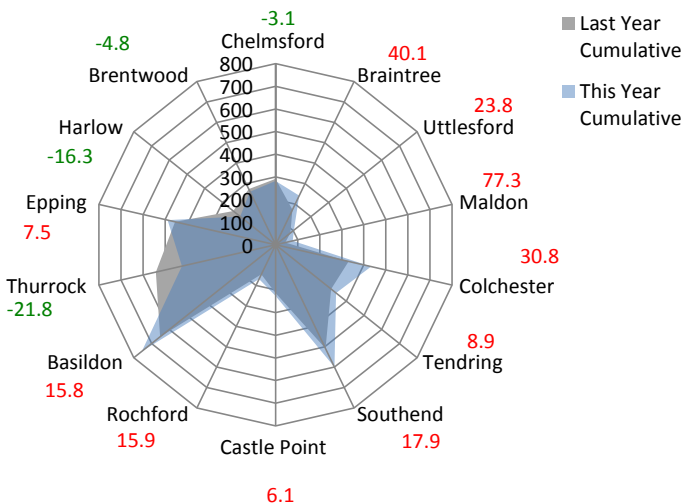
Robbery Offences - Year to date



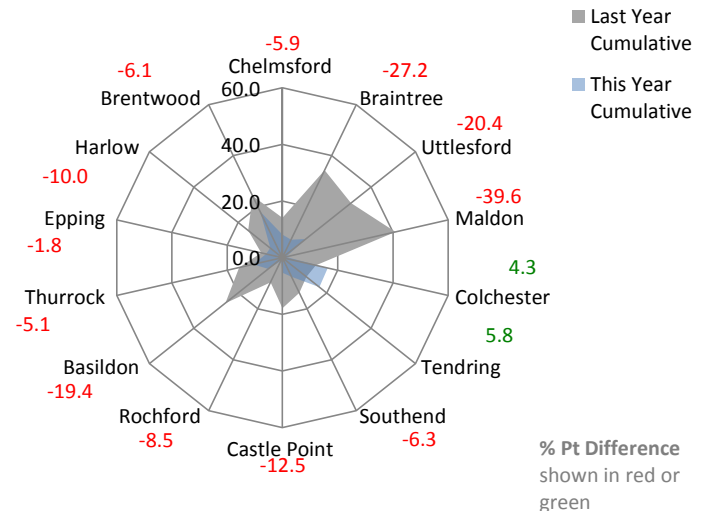
Robbery Solved Rate - Year to date



Dwelling Burglary Offences - Year to date



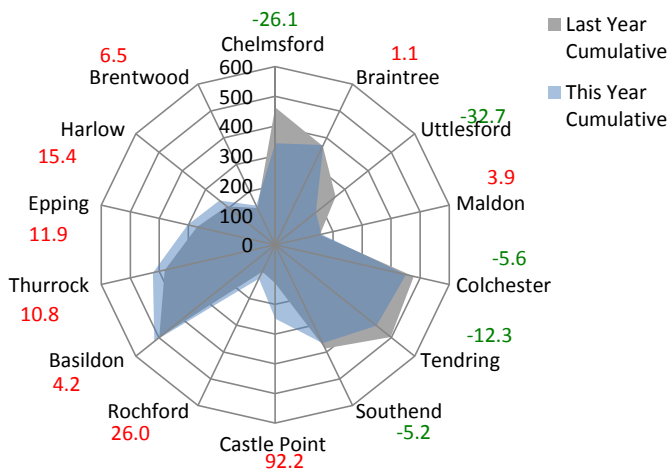
Dwelling Burglary Solved Rate - Year to date



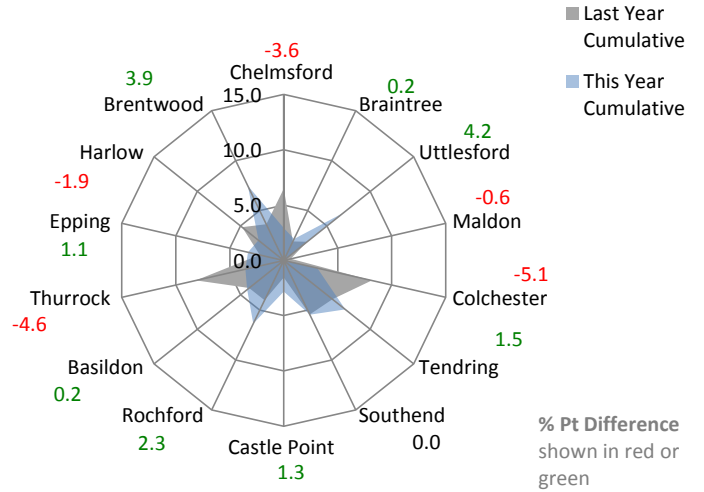
Corporate Services: Performance Summary

Essex Police Performance Summary: To November 2015

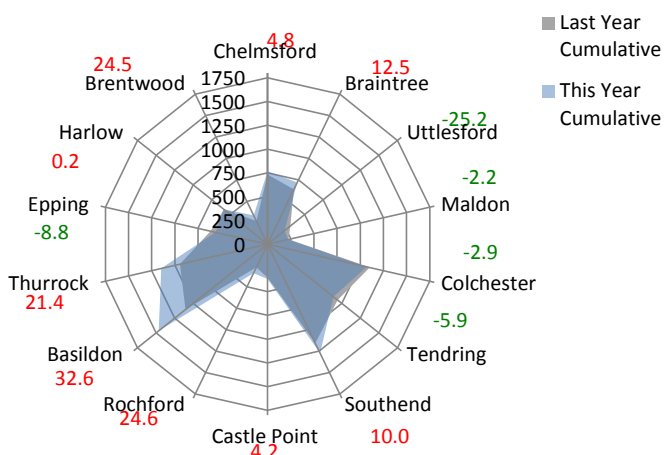
Other Burglary Offences - Year to date



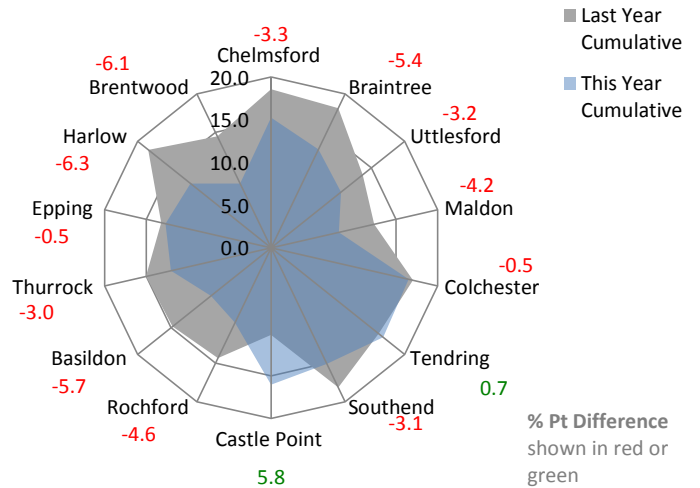
Other Burglary Solved Rate - Year to date



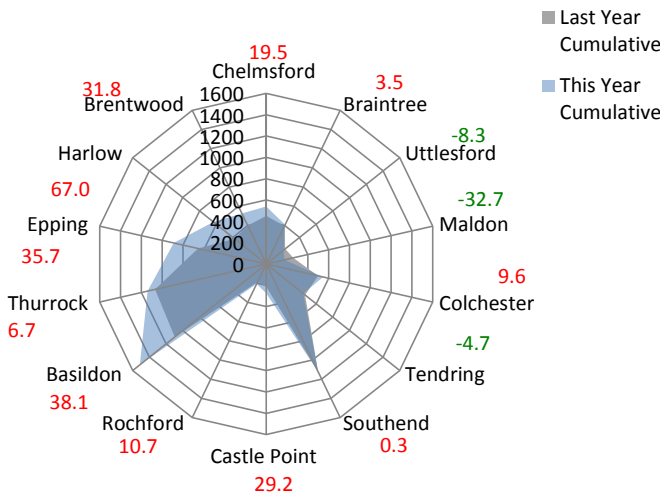
Criminal Damage Offences - Year to date



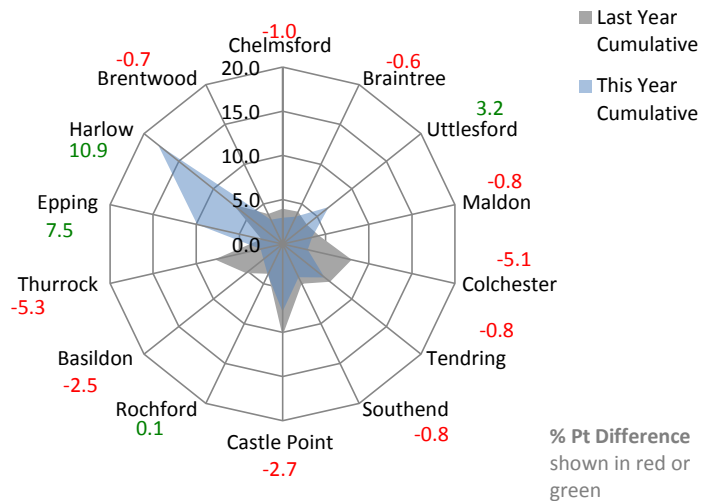
Criminal Damage Solved Rate - Year to date



Vehicle Offences - Year to date



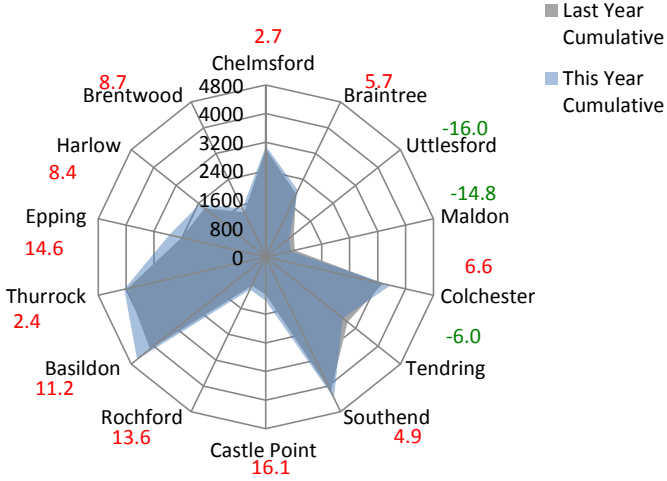
Vehicle Offences Solved Rate - Year to date



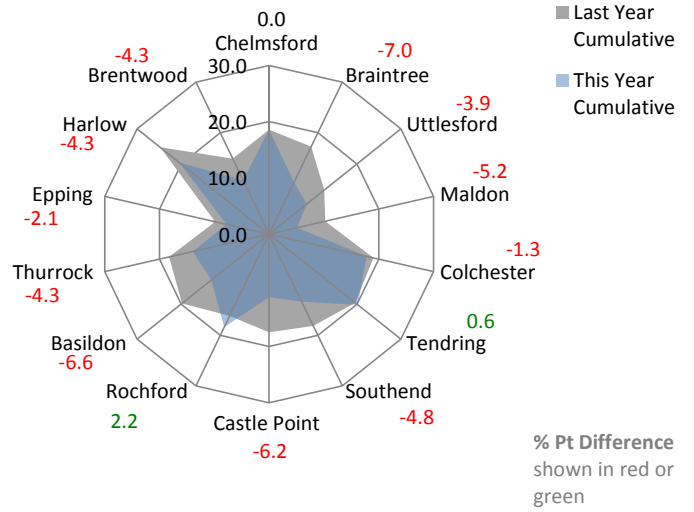
Corporate Services: Performance Summary

Essex Police Performance Summary: To November 2015

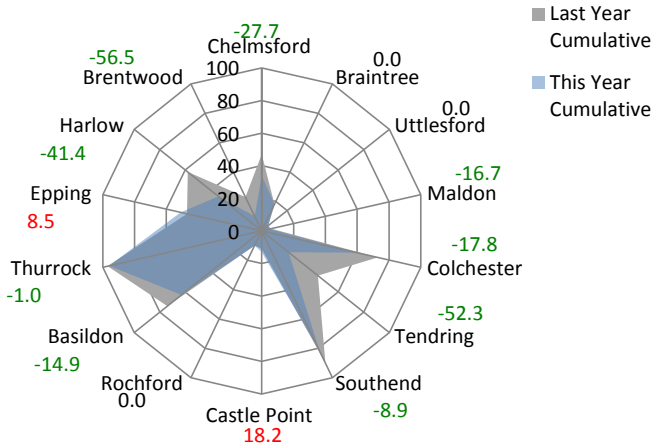
Theft Offences - Year to date



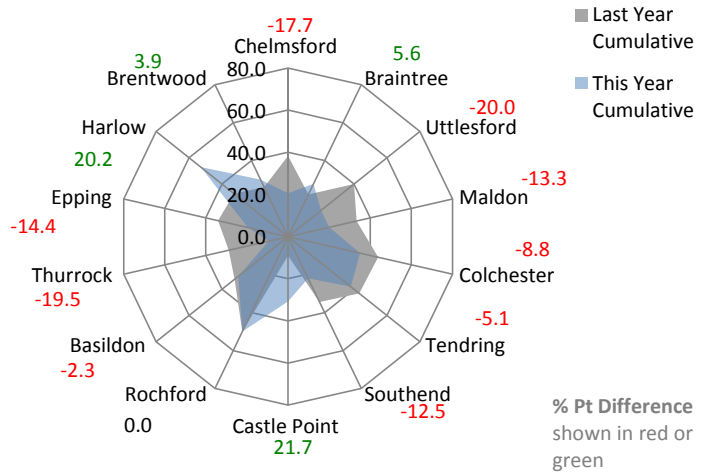
Theft Offences Solved Rate - Year to date



Racial / Religiously Aggravated Offences - Year to date % Difference



Racial/Religiously Aggravated Offences Solved Rate - Year to date



Corporate Services: Performance Summary
Essex Police Performance Summary

Force
Cumulative Year to November

Top Level	Offences				Outcomes				Solved Rates %		
Crime Type	2014	2015	# diff.	% diff.	2014	2015	# diff.	% diff.	2014	2015	% pt. diff.
Anti-Social Behaviour (incidents)	40252	37358	-2894	-7.2	-	-	-	-	-	-	-
All Crime (excl. Action (NFIB) Fraud)	67057	74453	7396	11.0	18018	15462	-2556	-14.2	26.9	20.8	-6.1
- State Based Crime	6717	7270	553	8.2	4653	3621	-1032	-22.2	69.3	49.8	-19.5
- Victim Based Crime	60340	67183	6843	11.3	13365	11841	-1524	-11.4	22.1	17.6	-4.5
Victim Based Crime	Offences				Outcomes				Solved Rates %		
Crime Type	2014	2015	# diff.	% diff.	2014	2015	# diff.	% diff.	2014	2015	% pt. diff.
Violence Against the Person	15342	19367	4025	26.2	5458	4979	-479	-8.8	35.6	25.7	-9.9
- Homicide	10	24	14	140.0	5	13	8	160.0	50.0	54.2	4.2
- Violence with Injury	7078	7763	685	9.7	2638	2270	-368	-13.9	37.3	29.2	-8.0
- Violence without Injury	8254	11580	3326	40.3	2815	2696	-119	-4.2	34.1	23.3	-10.8
Sexual Offences	1504	1852	348	23.1	253	288	35	13.8	16.8	15.6	-1.3
- Rape	561	631	70	12.5	81	73	-8	-9.9	14.4	11.6	-2.9
- Rape - Under 16 yrs	175	216	41	23.4	39	34	-5	-12.8	22.3	15.7	-6.5
- Rape - Over 16 yrs	386	415	29	7.5	42	39	-3	-7.1	10.9	9.4	-1.5
- Other Sexual Offences	943	1221	278	29.5	172	215	43	25.0	18.2	17.6	-0.6
Robbery	640	643	3	0.5	128	139	11	8.6	20.0	21.6	1.6
- Robbery of business property	54	64	10	18.5	18	32	14	77.8	33.3	50.0	16.7
- Robbery of Personal Property	586	579	-7	-1.2	110	107	-3	-2.7	18.8	18.5	-0.3
Theft Offences	33584	35337	1753	5.2	6033	5129	-904	-15.0	18.0	14.5	-3.4
- Burglary	8598	8913	315	3.7	942	595	-347	-36.8	11.0	6.7	-4.3
- Dwelling Burglary	4264	4602	338	7.9	731	419	-312	-42.7	17.1	9.1	-8.0
- Other Burglary	4334	4311	-23	-0.5	211	176	-35	-16.6	4.9	4.1	-0.8
- Vehicle Offences (incl. Interference)	7443	8664	1221	16.4	411	460	49	11.9	5.5	5.3	-0.2
- Theft from Vehicle	4836	5601	765	15.8	153	232	79	51.6	3.2	4.1	1.0
- Theft of Motor Vehicle	1921	2184	263	13.7	236	195	-41	-17.4	12.3	8.9	-3.4
- Vehicle Interference	686	879	193	28.1	22	33	11	50.0	3.2	3.8	0.5
- Theft	17543	17760	217	1.2	4680	4074	-606	-12.9	26.7	22.9	-3.7
- Theft from the Person	924	1160	236	25.5	28	40	12	42.9	3.0	3.4	0.4
- Theft of Pedal Cycle	1679	1690	11	0.7	69	63	-6	-8.7	4.1	3.7	-0.4
- Shoplifting	6211	6609	398	6.4	3596	3280	-316	-8.8	57.9	49.6	-8.3
- Other Theft	8729	8301	-428	-4.9	987	691	-296	-30.0	11.3	8.3	-3.0
Criminal Damage inc. Arson	9270	9984	714	7.7	1493	1306	-187	-12.5	16.1	13.1	-3.0
- Criminal Damage	8963	9632	669	7.5	1452	1276	-176	-12.1	16.2	13.2	-3.0
- Arson	307	352	45	14.7	41	30	-11	-26.8	13.4	8.5	-4.8
Racial/Religiously Aggravated Offences	611	505	-106	-17.3	214	132	-82	-38.3	35.0	26.1	-8.9
State Based Crime	Offences				Outcomes				Solved Rates %		
Crime Type	2014	2015	# diff.	% diff.	2014	2015	# diff.	% diff.	2014	2015	% pt. diff.
Drug Offences	2588	1849	-739	-28.6	2406	1651	-755	-31.4	93.0	89.3	-3.7
- Trafficking of Drugs	491	428	-63	-12.8	427	301	-126	-29.5	87.0	70.3	-16.6
- Possession of Drugs	2097	1421	-676	-32.2	1979	1350	-629	-31.8	94.4	95.0	0.6
Possession of Weapons	605	657	52	8.6	506	499	-7	-1.4	83.6	76.0	-7.7
Public Order	2740	3734	994	36.3	1331	1106	-225	-16.9	48.6	29.6	-19.0
Miscellaneous Crimes against Society	784	1030	246	31.4	410	365	-45	-11.0	52.3	35.4	-16.9

Corporate Services: Performance Summary
Essex Police Performance Summary

Force

Rolling 12 Months to November

Top Level	Offences				Outcomes				Solved Rates %		
Crime Type	2014	2015	# diff.	% diff.	2014	2015	# diff.	% diff.	2014	2015	% pt. diff.
Anti-Social Behaviour (incidents)	53940	53473	-467	-0.9	-	-	-	-	-	-	-
All Crime (excl. Action (NFIB) Fraud)	99725	107145	7420	7.4	27473	24487	-2986	-10.9	27.5	22.9	-4.7
- State Based Crime	9868	10345	477	4.8	7109	5838	-1271	-17.9	72.0	56.4	-15.6
- Victim Based Crime	89857	96800	6943	7.7	20364	18649	-1715	-8.4	22.7	19.3	-3.4
Victim Based Crime	Offences				Outcomes				Solved Rates %		
Crime Type	2014	2015	# diff.	% diff.	2014	2015	# diff.	% diff.	2014	2015	% pt. diff.
Violence Against the Person	22083	26924	4841	21.9	8164	7804	-360	-4.4	37.0	29.0	-8.0
- Homicide	16	25	9	56.3	9	15	6	66.7	56.3	60.0	3.8
- Violence with Injury	10265	11020	755	7.4	3935	3582	-353	-9.0	38.3	32.5	-5.8
- Violence without Injury	11802	15879	4077	34.5	4220	4207	-13	-0.3	35.8	26.5	-9.3
Sexual Offences	2107	2779	672	31.9	389	457	68	17.5	18.5	16.4	-2.0
- Rape	780	951	171	21.9	128	123	-5	-3.9	16.4	12.9	-3.5
- Rape - Under 16 yrs	246	322	76	30.9	68	56	-12	-17.6	27.6	17.4	-10.3
- Rape - Over 16 yrs	534	629	95	17.8	60	67	7	11.7	11.2	10.7	-0.6
- Other Sexual Offences	1327	1828	501	37.8	261	334	73	28.0	19.7	18.3	-1.4
Robbery	969	962	-7	-0.7	191	219	28	14.7	19.7	22.8	3.1
- Robbery of business property	90	115	25	27.8	21	42	21	100.0	23.3	36.5	13.2
- Robbery of Personal Property	879	847	-32	-3.6	170	177	7	4.1	19.3	20.9	1.6
Theft Offences	50748	51672	924	1.8	9342	8172	-1170	-12.5	18.4	15.8	-2.6
- Burglary	13356	13369	13	0.1	1335	1009	-326	-24.4	10.0	7.5	-2.4
- Dwelling Burglary	6957	7080	123	1.8	995	706	-289	-29.0	14.3	10.0	-4.3
- Other Burglary	6399	6289	-110	-1.7	340	303	-37	-10.9	5.3	4.8	-0.5
- Vehicle Offences (incl. Interference)	11436	12842	1406	12.3	607	680	73	12.0	5.3	5.3	0.0
- Theft from Vehicle	7662	8275	613	8.0	237	319	82	34.6	3.1	3.9	0.8
- Theft of Motor Vehicle	2845	3201	356	12.5	346	315	-31	-9.0	12.2	9.8	-2.3
- Vehicle Interference	929	1366	437	47.0	24	46	22	91.7	2.6	3.4	0.8
- Theft	25956	25461	-495	-1.9	7400	6483	-917	-12.4	28.5	25.5	-3.0
- Theft from the Person	1457	1585	128	8.8	43	50	7	16.3	3.0	3.2	0.2
- Theft of Pedal Cycle	2261	2226	-35	-1.5	113	93	-20	-17.7	5.0	4.2	-0.8
- Shoplifting	9414	9633	219	2.3	5693	5130	-563	-9.9	60.5	53.3	-7.2
- Other Theft	12824	12017	-807	-6.3	1551	1210	-341	-22.0	12.1	10.1	-2.0
Criminal Damage inc. Arson	13950	14463	513	3.7	2278	1997	-281	-12.3	16.3	13.8	-2.5
- Criminal Damage	13516	13966	450	3.3	2219	1945	-274	-12.3	16.4	13.9	-2.5
- Arson	434	497	63	14.5	59	52	-7	-11.9	13.6	10.5	-3.1
Racial/Religiously Aggravated Offences	856	789	-67	-7.8	298	230	-68	-22.8	34.8	29.2	-5.7
State Based Crime	Offences				Outcomes				Solved Rates %		
Crime Type	2014	2015	# diff.	% diff.	2014	2015	# diff.	% diff.	2014	2015	% pt. diff.
Drug Offences	3879	2965	-914	-23.6	3660	2796	-864	-23.6	94.4	94.3	-0.1
- Trafficking of Drugs	717	623	-94	-13.1	631	480	-151	-23.9	88.0	77.0	-11.0
- Possession of Drugs	3162	2342	-820	-25.9	3029	2316	-713	-23.5	95.8	98.9	3.1
Possession of Weapons	897	946	49	5.5	768	746	-22	-2.9	85.6	78.9	-6.8
Public Order	3910	4944	1034	26.4	1995	1681	-314	-15.7	51.0	34.0	-17.0
Miscellaneous Crimes against Society	1182	1490	308	26.1	686	615	-71	-10.3	58.0	41.3	-16.8

Corporate Services: Performance Summary
Essex Police Performance Summary

Chelmsford
Cumulative Year to November

Top Level	Offences				Outcomes				Solved Rates %		
Crime Type	2014	2015	# diff.	% diff.	2014	2015	# diff.	% diff.	2014	2015	% pt. diff.
Anti-Social Behaviour (incidents)	3150	2924	-226	-7.2	-	-	-	-	-	-	-
All Crime (excl. Action (NFIB) Fraud)	5963	6478	515	8.6	1776	1554	-222	-12.5	29.8	24.0	-5.8
- State Based Crime	669	677	8	1.2	469	349	-120	-25.6	70.1	51.6	-18.6
- Victim Based Crime	5294	5801	507	9.6	1307	1205	-102	-7.8	24.7	20.8	-3.9
Victim Based Crime	Offences				Outcomes				Solved Rates %		
Crime Type	2014	2015	# diff.	% diff.	2014	2015	# diff.	% diff.	2014	2015	% pt. diff.
Violence Against the Person	1374	1753	379	27.6	574	481	-93	-16.2	41.8	27.4	-14.3
- Homicide	2	2	0	0.0	1	1	0	0.0	50.0	50.0	0.0
- Violence with Injury	643	720	77	12.0	273	216	-57	-20.9	42.5	30.0	-12.5
- Violence without Injury	729	1031	302	41.4	300	264	-36	-12.0	41.2	25.6	-15.5
Sexual Offences	126	148	22	17.5	24	24	0	0.0	19.0	16.2	-2.8
- Rape	48	54	6	12.5	9	10	1	11.1	18.8	18.5	-0.2
- Rape - Under 16 yrs	12	11	-1	-8.3	2	3	1	50.0	16.7	27.3	10.6
- Rape - Over 16 yrs	36	43	7	19.4	7	7	0	0.0	19.4	16.3	-3.2
- Other Sexual Offences	78	94	16	20.5	15	14	-1	-6.7	19.2	14.9	-4.3
Robbery	48	39	-9	-18.8	13	8	-5	-38.5	27.1	20.5	-6.6
- Robbery of business property	5	4	-1	-20.0	1	0	-1	-100.0	20.0	0.0	-20.0
- Robbery of Personal Property	43	35	-8	-18.6	12	8	-4	-33.3	27.9	22.9	-5.0
Theft Offences	3014	3094	80	2.7	560	575	15	2.7	18.6	18.6	0.0
- Burglary	754	624	-130	-17.2	71	33	-38	-53.5	9.4	5.3	-4.1
- Dwelling Burglary	291	282	-9	-3.1	41	23	-18	-43.9	14.1	8.2	-5.9
- Other Burglary	463	342	-121	-26.1	30	10	-20	-66.7	6.5	2.9	-3.6
- Vehicle Offences (incl. Interference)	452	540	88	19.5	18	16	-2	-11.1	4.0	3.0	-1.0
- Theft from Vehicle	295	314	19	6.4	2	5	3	150.0	0.7	1.6	0.9
- Theft of Motor Vehicle	129	166	37	28.7	16	11	-5	-31.3	12.4	6.6	-5.8
- Vehicle Interference	28	60	32	114.3	0	0	0	-	0.0	0.0	0.0
- Theft	1808	1930	122	6.7	471	526	55	11.7	26.1	27.3	1.2
- Theft from the Person	141	133	-8	-5.7	5	7	2	40.0	3.5	5.3	1.7
- Theft of Pedal Cycle	247	239	-8	-3.2	13	8	-5	-38.5	5.3	3.3	-1.9
- Shoplifting	566	771	205	36.2	349	455	106	30.4	61.7	59.0	-2.6
- Other Theft	854	787	-67	-7.8	104	56	-48	-46.2	12.2	7.1	-5.1
Criminal Damage inc. Arson	732	767	35	4.8	136	117	-19	-14.0	18.6	15.3	-3.3
- Criminal Damage	711	733	22	3.1	130	115	-15	-11.5	18.3	15.7	-2.6
- Arson	21	34	13	61.9	6	2	-4	-66.7	28.6	5.9	-22.7
Racial/Religiously Aggravated Offences	47	34	-13	-27.7	18	7	-11	-61.1	38.3	20.6	-17.7
State Based Crime	Offences				Outcomes				Solved Rates %		
Crime Type	2014	2015	# diff.	% diff.	2014	2015	# diff.	% diff.	2014	2015	% pt. diff.
Drug Offences	298	229	-69	-23.2	269	211	-58	-21.6	90.3	92.1	1.9
- Trafficking of Drugs	34	33	-1	-2.9	26	28	2	7.7	76.5	84.8	8.4
- Possession of Drugs	264	196	-68	-25.8	243	183	-60	-24.7	92.0	93.4	1.3
Possession of Weapons	34	43	9	26.5	31	32	1	3.2	91.2	74.4	-16.8
Public Order	242	302	60	24.8	123	67	-56	-45.5	50.8	22.2	-28.6
Miscellaneous Crimes against Society	95	103	8	8.4	46	39	-7	-15.2	48.4	37.9	-10.6

Corporate Services: Performance Summary
Essex Police Performance Summary

Chelmsford
Rolling 12 Months to November

Top Level	Offences				Outcomes				Solved Rates %		
Crime Type	2014	2015	# diff.	% diff.	2014	2015	# diff.	% diff.	2014	2015	% pt. diff.
Anti-Social Behaviour (incidents)	4269	4291	22	0.5	-	-	-	-	-	-	-
All Crime (excl. Action (NFIB) Fraud)	8865	9399	534	6.0	2703	2462	-241	-8.9	30.5	26.2	-4.3
- State Based Crime	975	995	20	2.1	694	603	-91	-13.1	71.2	60.6	-10.6
- Victim Based Crime	7890	8404	514	6.5	2009	1859	-150	-7.5	25.5	22.1	-3.3
Victim Based Crime	Offences				Outcomes				Solved Rates %		
Crime Type	2014	2015	# diff.	% diff.	2014	2015	# diff.	% diff.	2014	2015	% pt. diff.
Violence Against the Person	1948	2436	488	25.1	827	771	-56	-6.8	42.5	31.7	-10.8
- Homicide	2	3	1	50.0	2	2	0	0.0	100.0	66.7	-33.3
- Violence with Injury	920	1029	109	11.8	403	357	-46	-11.4	43.8	34.7	-9.1
- Violence without Injury	1026	1404	378	36.8	422	412	-10	-2.4	41.1	29.3	-11.8
Sexual Offences	175	234	59	33.7	33	29	-4	-12.1	18.9	12.4	-6.5
- Rape	71	88	17	23.9	12	11	-1	-8.3	16.9	12.5	-4.4
- Rape - Under 16 yrs	19	21	2	10.5	5	4	-1	-20.0	26.3	19.0	-7.3
- Rape - Over 16 yrs	52	67	15	28.8	7	7	0	0.0	13.5	10.4	-3.0
- Other Sexual Offences	104	146	42	40.4	21	18	-3	-14.3	20.2	12.3	-7.9
Robbery	72	57	-15	-20.8	16	16	0	0.0	22.2	28.1	5.8
- Robbery of business property	6	7	1	16.7	1	1	0	0.0	16.7	14.3	-2.4
- Robbery of Personal Property	66	50	-16	-24.2	15	15	0	0.0	22.7	30.0	7.3
Theft Offences	4543	4519	-24	-0.5	921	852	-69	-7.5	20.3	18.9	-1.4
- Burglary	1151	975	-176	-15.3	98	53	-45	-45.9	8.5	5.4	-3.1
- Dwelling Burglary	478	457	-21	-4.4	53	37	-16	-30.2	11.1	8.1	-3.0
- Other Burglary	673	518	-155	-23.0	45	16	-29	-64.4	6.7	3.1	-3.6
- Vehicle Offences (incl. Interference)	681	841	160	23.5	31	27	-4	-12.9	4.6	3.2	-1.3
- Theft from Vehicle	440	527	87	19.8	8	9	1	12.5	1.8	1.7	-0.1
- Theft of Motor Vehicle	199	217	18	9.0	22	18	-4	-18.2	11.1	8.3	-2.8
- Vehicle Interference	42	97	55	131.0	1	0	-1	-100.0	2.4	0.0	-2.4
- Theft	2711	2703	-8	-0.3	792	772	-20	-2.5	29.2	28.6	-0.7
- Theft from the Person	229	178	-51	-22.3	7	8	1	14.3	3.1	4.5	1.4
- Theft of Pedal Cycle	338	342	4	1.2	23	10	-13	-56.5	6.8	2.9	-3.9
- Shoplifting	906	1072	166	18.3	594	651	57	9.6	65.6	60.7	-4.8
- Other Theft	1238	1111	-127	-10.3	168	103	-65	-38.7	13.6	9.3	-4.3
Criminal Damage inc. Arson	1152	1158	6	0.5	212	191	-21	-9.9	18.4	16.5	-1.9
- Criminal Damage	1118	1110	-8	-0.7	205	186	-19	-9.3	18.3	16.8	-1.6
- Arson	34	48	14	41.2	7	5	-2	-28.6	20.6	10.4	-10.2
Racial/Religiously Aggravated Offences	62	61	-1	-1.6	22	16	-6	-27.3	35.5	26.2	-9.3
State Based Crime	Offences				Outcomes				Solved Rates %		
Crime Type	2014	2015	# diff.	% diff.	2014	2015	# diff.	% diff.	2014	2015	% pt. diff.
Drug Offences	421	371	-50	-11.9	395	357	-38	-9.6	93.8	96.2	2.4
- Trafficking of Drugs	45	52	7	15.6	37	39	2	5.4	82.2	75.0	-7.2
- Possession of Drugs	376	319	-57	-15.2	358	318	-40	-11.2	95.2	99.7	4.5
Possession of Weapons	52	63	11	21.2	44	48	4	9.1	84.6	76.2	-8.4
Public Order	361	417	56	15.5	181	122	-59	-32.6	50.1	29.3	-20.9
Miscellaneous Crimes against Society	141	144	3	2.1	74	76	2	2.7	52.5	52.8	0.3

Corporate Services: Performance Summary
Essex Police Performance Summary

Braintree
Cumulative Year to November

Top Level	Offences				Outcomes				Solved Rates %		
Crime Type	2014	2015	# diff.	% diff.	2014	2015	# diff.	% diff.	2014	2015	% pt. diff.
Anti-Social Behaviour (incidents)	2671	2475	-196	-7.3	-	-	-	-	-	-	-
All Crime (excl. Action (NFIB) Fraud)	3944	4693	749	19.0	1106	912	-194	-17.5	28.0	19.4	-8.6
- State Based Crime	348	409	61	17.5	252	216	-36	-14.3	72.4	52.8	-19.6
- Victim Based Crime	3596	4284	688	19.1	854	696	-158	-18.5	23.7	16.2	-7.5
Victim Based Crime	Offences				Outcomes				Solved Rates %		
Crime Type	2014	2015	# diff.	% diff.	2014	2015	# diff.	% diff.	2014	2015	% pt. diff.
Violence Against the Person	901	1281	380	42.2	380	357	-23	-6.1	42.2	27.9	-14.3
- Homicide	1	2	1	100.0	1	0	-1	-100.0	100.0	0.0	-100.0
- Violence with Injury	411	499	88	21.4	172	171	-1	-0.6	41.8	34.3	-7.6
- Violence without Injury	489	780	291	59.5	207	186	-21	-10.1	42.3	23.8	-18.5
Sexual Offences	84	202	118	140.5	11	30	19	172.7	13.1	14.9	1.8
- Rape	33	40	7	21.2	5	10	5	100.0	15.2	25.0	9.8
- Rape - Under 16 yrs	12	20	8	66.7	5	9	4	80.0	41.7	45.0	3.3
- Rape - Over 16 yrs	21	20	-1	-4.8	0	1	1	-	0.0	5.0	5.0
- Other Sexual Offences	51	162	111	217.6	6	20	14	233.3	11.8	12.3	0.6
Robbery	20	18	-2	-10.0	10	6	-4	-40.0	50.0	33.3	-16.7
- Robbery of business property	3	5	2	66.7	4	4	0	0.0	133.3	80.0	-53.3
- Robbery of Personal Property	17	13	-4	-23.5	6	2	-4	-66.7	35.3	15.4	-19.9
Theft Offences	1952	2064	112	5.7	337	211	-126	-37.4	17.3	10.2	-7.0
- Burglary	541	614	73	13.5	66	25	-41	-62.1	12.2	4.1	-8.1
- Dwelling Burglary	172	241	69	40.1	59	17	-42	-71.2	34.3	7.1	-27.2
- Other Burglary	369	373	4	1.1	7	8	1	14.3	1.9	2.1	0.2
- Vehicle Offences (incl. Interference)	395	409	14	3.5	16	14	-2	-12.5	4.1	3.4	-0.6
- Theft from Vehicle	288	304	16	5.6	6	8	2	33.3	2.1	2.6	0.5
- Theft of Motor Vehicle	77	64	-13	-16.9	10	6	-4	-40.0	13.0	9.4	-3.6
- Vehicle Interference	30	41	11	36.7	0	0	0	-	0.0	0.0	0.0
- Theft	1016	1041	25	2.5	255	172	-83	-32.5	25.1	16.5	-8.6
- Theft from the Person	46	66	20	43.5	1	0	-1	-100.0	2.2	0.0	-2.2
- Theft of Pedal Cycle	90	127	37	41.1	2	3	1	50.0	2.2	2.4	0.1
- Shoplifting	294	279	-15	-5.1	166	124	-42	-25.3	56.5	44.4	-12.0
- Other Theft	586	569	-17	-2.9	86	45	-41	-47.7	14.7	7.9	-6.8
Criminal Damage inc. Arson	639	719	80	12.5	116	92	-24	-20.7	18.2	12.8	-5.4
- Criminal Damage	615	696	81	13.2	113	89	-24	-21.2	18.4	12.8	-5.6
- Arson	24	23	-1	-4.2	3	3	0	0.0	12.5	13.0	0.5
Racial/Religiously Aggravated Offences	18	18	0	0.0	4	5	1	25.0	22.2	27.8	5.6
State Based Crime	Offences				Outcomes				Solved Rates %		
Crime Type	2014	2015	# diff.	% diff.	2014	2015	# diff.	% diff.	2014	2015	% pt. diff.
Drug Offences	154	105	-49	-31.8	138	95	-43	-31.2	89.6	90.5	0.9
- Trafficking of Drugs	17	15	-2	-11.8	14	8	-6	-42.9	82.4	53.3	-29.0
- Possession of Drugs	137	90	-47	-34.3	124	87	-37	-29.8	90.5	96.7	6.2
Possession of Weapons	15	26	11	73.3	12	15	3	25.0	80.0	57.7	-22.3
Public Order	141	236	95	67.4	73	90	17	23.3	51.8	38.1	-13.6
Miscellaneous Crimes against Society	38	42	4	10.5	29	16	-13	-44.8	76.3	38.1	-38.2

Corporate Services: Performance Summary
Essex Police Performance Summary

Braintree

Rolling 12 Months to November

Top Level	Offences				Outcomes				Solved Rates %		
Crime Type	2014	2015	# diff.	% diff.	2014	2015	# diff.	% diff.	2014	2015	% pt. diff.
Anti-Social Behaviour (incidents)	3638	3576	-62	-1.7	-	-	-	-	-	-	-
All Crime (excl. Action (NFIB) Fraud)	5804	6609	805	13.9	1563	1475	-88	-5.6	26.9	22.3	-4.6
- State Based Crime	472	595	123	26.1	337	348	11	3.3	71.4	58.5	-12.9
- Victim Based Crime	5332	6014	682	12.8	1226	1127	-99	-8.1	23.0	18.7	-4.3
Victim Based Crime	Offences				Outcomes				Solved Rates %		
Crime Type	2014	2015	# diff.	% diff.	2014	2015	# diff.	% diff.	2014	2015	% pt. diff.
Violence Against the Person	1286	1759	473	36.8	564	590	26	4.6	43.9	33.5	-10.3
- Homicide	1	2	1	100.0	1	0	-1	-100.0	100.0	0.0	-100.0
- Violence with Injury	584	715	131	22.4	251	276	25	10.0	43.0	38.6	-4.4
- Violence without Injury	701	1042	341	48.6	312	314	2	0.6	44.5	30.1	-14.4
Sexual Offences	117	264	147	125.6	15	42	27	180.0	12.8	15.9	3.1
- Rape	43	60	17	39.5	6	13	7	116.7	14.0	21.7	7.7
- Rape - Under 16 yrs	15	27	12	80.0	5	12	7	140.0	33.3	44.4	11.1
- Rape - Over 16 yrs	28	33	5	17.9	1	1	0	0.0	3.6	3.0	-0.5
- Other Sexual Offences	74	204	130	175.7	9	29	20	222.2	12.2	14.2	2.1
Robbery	26	31	5	19.2	11	8	-3	-27.3	42.3	25.8	-16.5
- Robbery of business property	5	9	4	80.0	4	5	1	25.0	80.0	55.6	-24.4
- Robbery of Personal Property	21	22	1	4.8	7	3	-4	-57.1	33.3	13.6	-19.7
Theft Offences	2974	2947	-27	-0.9	469	348	-121	-25.8	15.8	11.8	-4.0
- Burglary	852	834	-18	-2.1	84	37	-47	-56.0	9.9	4.4	-5.4
- Dwelling Burglary	318	330	12	3.8	71	27	-44	-62.0	22.3	8.2	-14.1
- Other Burglary	534	504	-30	-5.6	13	10	-3	-23.1	2.4	2.0	-0.5
- Vehicle Offences (incl. Interference)	649	577	-72	-11.1	26	19	-7	-26.9	4.0	3.3	-0.7
- Theft from Vehicle	456	426	-30	-6.6	8	10	2	25.0	1.8	2.3	0.6
- Theft of Motor Vehicle	133	91	-42	-31.6	18	8	-10	-55.6	13.5	8.8	-4.7
- Vehicle Interference	60	60	0	0.0	0	1	1	-	0.0	1.7	1.7
- Theft	1473	1536	63	4.3	359	292	-67	-18.7	24.4	19.0	-5.4
- Theft from the Person	85	96	11	12.9	1	3	2	200.0	1.2	3.1	1.9
- Theft of Pedal Cycle	109	169	60	55.0	3	6	3	100.0	2.8	3.6	0.8
- Shoplifting	428	426	-2	-0.5	233	203	-30	-12.9	54.4	47.7	-6.8
- Other Theft	851	845	-6	-0.7	122	80	-42	-34.4	14.3	9.5	-4.9
Criminal Damage inc. Arson	929	1013	84	9.0	167	139	-28	-16.8	18.0	13.7	-4.3
- Criminal Damage	897	984	87	9.7	163	134	-29	-17.8	18.2	13.6	-4.6
- Arson	32	29	-3	-9.4	4	5	1	25.0	12.5	17.2	4.7
Racial/Religiously Aggravated Offences	27	26	-1	-3.7	9	13	4	44.4	33.3	50.0	16.7
State Based Crime	Offences				Outcomes				Solved Rates %		
Crime Type	2014	2015	# diff.	% diff.	2014	2015	# diff.	% diff.	2014	2015	% pt. diff.
Drug Offences	206	173	-33	-16.0	191	171	-20	-10.5	92.7	98.8	6.1
- Trafficking of Drugs	21	21	0	0.0	17	13	-4	-23.5	81.0	61.9	-19.0
- Possession of Drugs	185	152	-33	-17.8	174	158	-16	-9.2	94.1	103.9	9.9
Possession of Weapons	20	33	13	65.0	16	21	5	31.3	80.0	63.6	-16.4
Public Order	191	316	125	65.4	92	124	32	34.8	48.2	39.2	-8.9
Miscellaneous Crimes against Society	55	73	18	32.7	38	32	-6	-15.8	69.1	43.8	-25.3

Corporate Services: Performance Summary
Essex Police Performance Summary

Uttlesford
Cumulative Year to November

Top Level	Offences				Outcomes				Solved Rates %		
Crime Type	2014	2015	# diff.	% diff.	2014	2015	# diff.	% diff.	2014	2015	% pt. diff.
Anti-Social Behaviour (incidents)	996	837	-159	-16.0	-	-	-	-	-	-	-
All Crime (excl. Action (NFIB) Fraud)	1792	1615	-177	-9.9	379	297	-82	-21.6	21.1	18.4	-2.8
- State Based Crime	119	118	-1	-0.8	85	64	-21	-24.7	71.4	54.2	-17.2
- Victim Based Crime	1673	1497	-176	-10.5	294	233	-61	-20.7	17.6	15.6	-2.0
Victim Based Crime	Offences				Outcomes				Solved Rates %		
Crime Type	2014	2015	# diff.	% diff.	2014	2015	# diff.	% diff.	2014	2015	% pt. diff.
Violence Against the Person	323	384	61	18.9	114	125	11	9.6	35.3	32.6	-2.7
- Homicide	0	3	3	-	0	1	1	-	-	33.3	-
- Violence with Injury	150	160	10	6.7	61	70	9	14.8	40.7	43.8	3.1
- Violence without Injury	173	221	48	27.7	53	54	1	1.9	30.6	24.4	-6.2
Sexual Offences	43	41	-2	-4.7	13	9	-4	-30.8	30.2	22.0	-8.3
- Rape	15	22	7	46.7	5	2	-3	-60.0	33.3	9.1	-24.2
- Rape - Under 16 yrs	5	13	8	160.0	3	0	-3	-100.0	60.0	0.0	-60.0
- Rape - Over 16 yrs	10	9	-1	-10.0	2	2	0	0.0	20.0	22.2	2.2
- Other Sexual Offences	28	19	-9	-32.1	8	7	-1	-12.5	28.6	36.8	8.3
Robbery	5	6	1	20.0	0	3	3	-	0.0	50.0	50.0
- Robbery of business property	1	1	0	0.0	0	0	0	-	0.0	0.0	0.0
- Robbery of Personal Property	4	5	1	25.0	0	3	3	-	0.0	60.0	60.0
Theft Offences	996	837	-159	-16.0	125	72	-53	-42.4	12.6	8.6	-3.9
- Burglary	344	279	-65	-18.9	33	23	-10	-30.3	9.6	8.2	-1.3
- Dwelling Burglary	84	104	20	23.8	26	11	-15	-57.7	31.0	10.6	-20.4
- Other Burglary	260	175	-85	-32.7	7	12	5	71.4	2.7	6.9	4.2
- Vehicle Offences (incl. Interference)	228	209	-19	-8.3	8	14	6	75.0	3.5	6.7	3.2
- Theft from Vehicle	153	152	-1	-0.7	0	8	8	-	0.0	5.3	5.3
- Theft of Motor Vehicle	46	32	-14	-30.4	8	6	-2	-25.0	17.4	18.8	1.4
- Vehicle Interference	29	25	-4	-13.8	0	0	0	-	0.0	0.0	0.0
- Theft	424	349	-75	-17.7	84	35	-49	-58.3	19.8	10.0	-9.8
- Theft from the Person	7	16	9	128.6	1	1	0	0.0	14.3	6.3	-8.0
- Theft of Pedal Cycle	17	15	-2	-11.8	0	1	1	-	0.0	6.7	6.7
- Shoplifting	82	54	-28	-34.1	45	20	-25	-55.6	54.9	37.0	-17.8
- Other Theft	318	264	-54	-17.0	38	13	-25	-65.8	11.9	4.9	-7.0
Criminal Damage inc. Arson	306	229	-77	-25.2	42	24	-18	-42.9	13.7	10.5	-3.2
- Criminal Damage	297	216	-81	-27.3	40	23	-17	-42.5	13.5	10.6	-2.8
- Arson	9	13	4	44.4	2	1	-1	-50.0	22.2	7.7	-14.5
Racial/Religiously Aggravated Offences	5	5	0	0.0	2	1	-1	-50.0	40.0	20.0	-20.0
State Based Crime	Offences				Outcomes				Solved Rates %		
Crime Type	2014	2015	# diff.	% diff.	2014	2015	# diff.	% diff.	2014	2015	% pt. diff.
Drug Offences	41	33	-8	-19.5	38	31	-7	-18.4	92.7	93.9	1.3
- Trafficking of Drugs	8	6	-2	-25.0	4	4	0	0.0	50.0	66.7	16.7
- Possession of Drugs	33	27	-6	-18.2	34	27	-7	-20.6	103.0	100.0	-3.0
Possession of Weapons	11	6	-5	-45.5	7	6	-1	-14.3	63.6	100.0	36.4
Public Order	37	63	26	70.3	27	20	-7	-25.9	73.0	31.7	-41.2
Miscellaneous Crimes against Society	30	16	-14	-46.7	13	7	-6	-46.2	43.3	43.8	0.4

Corporate Services: Performance Summary
Essex Police Performance Summary

Uttlesford
Rolling 12 Months to November

Top Level	Offences				Outcomes				Solved Rates %		
Crime Type	2014	2015	# diff.	% diff.	2014	2015	# diff.	% diff.	2014	2015	% pt. diff.
Anti-Social Behaviour (incidents)	1305	1212	-93	-7.1	-	-	-	-	-	-	-
All Crime (excl. Action (NFIB) Fraud)	2653	2434	-219	-8.3	549	474	-75	-13.7	20.7	19.5	-1.2
- State Based Crime	162	174	12	7.4	112	96	-16	-14.3	69.1	55.2	-14.0
- Victim Based Crime	2491	2260	-231	-9.3	437	378	-59	-13.5	17.5	16.7	-0.8
Victim Based Crime	Offences				Outcomes				Solved Rates %		
Crime Type	2014	2015	# diff.	% diff.	2014	2015	# diff.	% diff.	2014	2015	% pt. diff.
Violence Against the Person	435	546	111	25.5	174	198	24	13.8	40.0	36.3	-3.7
- Homicide	0	3	3	-	0	1	1	-	-	33.3	-
- Violence with Injury	206	234	28	13.6	94	107	13	13.8	45.6	45.7	0.1
- Violence without Injury	229	309	80	34.9	80	90	10	12.5	34.9	29.1	-5.8
Sexual Offences	55	65	10	18.2	17	14	-3	-17.6	30.9	21.5	-9.4
- Rape	20	30	10	50.0	5	4	-1	-20.0	25.0	13.3	-11.7
- Rape - Under 16 yrs	7	18	11	157.1	3	1	-2	-66.7	42.9	5.6	-37.3
- Rape - Over 16 yrs	13	12	-1	-7.7	2	3	1	50.0	15.4	25.0	9.6
- Other Sexual Offences	35	35	0	0.0	12	10	-2	-16.7	34.3	28.6	-5.7
Robbery	10	8	-2	-20.0	3	3	0	0.0	30.0	37.5	7.5
- Robbery of business property	1	1	0	0.0	2	0	-2	-100.0	200.0	0.0	-200.0
- Robbery of Personal Property	9	7	-2	-22.2	1	3	2	200.0	11.1	42.9	31.7
Theft Offences	1568	1307	-261	-16.6	182	121	-61	-33.5	11.6	9.3	-2.3
- Burglary	565	464	-101	-17.9	49	41	-8	-16.3	8.7	8.8	0.2
- Dwelling Burglary	176	148	-28	-15.9	41	26	-15	-36.6	23.3	17.6	-5.7
- Other Burglary	389	316	-73	-18.8	8	15	7	87.5	2.1	4.7	2.7
- Vehicle Offences (incl. Interference)	390	335	-55	-14.1	11	18	7	63.6	2.8	5.4	2.6
- Theft from Vehicle	288	250	-38	-13.2	0	8	8	-	0.0	3.2	3.2
- Theft of Motor Vehicle	62	50	-12	-19.4	11	10	-1	-9.1	17.7	20.0	2.3
- Vehicle Interference	40	35	-5	-12.5	0	0	0	-	0.0	0.0	0.0
- Theft	613	508	-105	-17.1	122	62	-60	-49.2	19.9	12.2	-7.7
- Theft from the Person	10	21	11	110.0	1	1	0	0.0	10.0	4.8	-5.2
- Theft of Pedal Cycle	21	22	1	4.8	0	1	1	-	0.0	4.5	4.5
- Shoplifting	122	92	-30	-24.6	61	33	-28	-45.9	50.0	35.9	-14.1
- Other Theft	460	373	-87	-18.9	60	27	-33	-55.0	13.0	7.2	-5.8
Criminal Damage inc. Arson	423	334	-89	-21.0	61	42	-19	-31.1	14.4	12.6	-1.8
- Criminal Damage	412	318	-94	-22.8	59	41	-18	-30.5	14.3	12.9	-1.4
- Arson	11	16	5	45.5	2	1	-1	-50.0	18.2	6.3	-11.9
Racial/Religiously Aggravated Offences	10	10	0	0.0	3	2	-1	-33.3	30.0	20.0	-10.0
State Based Crime	Offences				Outcomes				Solved Rates %		
Crime Type	2014	2015	# diff.	% diff.	2014	2015	# diff.	% diff.	2014	2015	% pt. diff.
Drug Offences	57	53	-4	-7.0	51	52	1	2.0	89.5	98.1	8.6
- Trafficking of Drugs	9	9	0	0.0	5	7	2	40.0	55.6	77.8	22.2
- Possession of Drugs	48	44	-4	-8.3	46	45	-1	-2.2	95.8	102.3	6.4
Possession of Weapons	11	9	-2	-18.2	7	7	0	0.0	63.6	77.8	14.1
Public Order	59	85	26	44.1	40	27	-13	-32.5	67.8	31.8	-36.0
Miscellaneous Crimes against Society	35	27	-8	-22.9	14	10	-4	-28.6	40.0	37.0	-3.0

Corporate Services: Performance Summary

Essex Police Performance Summary

Maldon

Cumulative Year to November

Top Level	Offences				Outcomes				Solved Rates %		
Crime Type	2014	2015	# diff.	% diff.	2014	2015	# diff.	% diff.	2014	2015	% pt. diff.
Anti-Social Behaviour (incidents)	823	785	-38	-4.6	-	-	-	-	-	-	-
All Crime (excl. Action (NFIB) Fraud)	1577	1564	-13	-0.8	350	261	-89	-25.4	22.2	16.7	-5.5
- State Based Crime	122	139	17	13.9	84	77	-7	-8.3	68.9	55.4	-13.5
- Victim Based Crime	1455	1425	-30	-2.1	266	184	-82	-30.8	18.3	12.9	-5.4
Victim Based Crime	Offences				Outcomes				Solved Rates %		
Crime Type	2014	2015	# diff.	% diff.	2014	2015	# diff.	% diff.	2014	2015	% pt. diff.
Violence Against the Person	361	441	80	22.2	138	123	-15	-10.9	38.2	27.9	-10.3
- Homicide	0	1	1	-	0	1	1	-	-	100.0	-
- Violence with Injury	155	186	31	20.0	64	65	1	1.6	41.3	34.9	-6.3
- Violence without Injury	206	254	48	23.3	74	57	-17	-23.0	35.9	22.4	-13.5
Sexual Offences	28	50	22	78.6	9	5	-4	-44.4	32.1	10.0	-22.1
- Rape	13	29	16	123.1	4	0	-4	-100.0	30.8	0.0	-30.8
- Rape - Under 16 yrs	9	21	12	133.3	1	0	-1	-100.0	11.1	0.0	-11.1
- Rape - Over 16 yrs	4	8	4	100.0	3	0	-3	-100.0	75.0	0.0	-75.0
- Other Sexual Offences	15	21	6	40.0	5	5	0	0.0	33.3	23.8	-9.5
Robbery	11	7	-4	-36.4	6	2	-4	-66.7	54.5	28.6	-26.0
- Robbery of business property	0	2	2	-	0	0	0	-	-	0.0	-
- Robbery of Personal Property	11	5	-6	-54.5	6	2	-4	-66.7	54.5	40.0	-14.5
Theft Offences	829	706	-123	-14.8	85	36	-49	-57.6	10.3	5.1	-5.2
- Burglary	198	238	40	20.2	19	1	-18	-94.7	9.6	0.4	-9.2
- Dwelling Burglary	44	78	34	77.3	18	1	-17	-94.4	40.9	1.3	-39.6
- Other Burglary	154	160	6	3.9	1	0	-1	-100.0	0.6	0.0	-0.6
- Vehicle Offences (incl. Interference)	260	175	-85	-32.7	11	6	-5	-45.5	4.2	3.4	-0.8
- Theft from Vehicle	175	120	-55	-31.4	7	3	-4	-57.1	4.0	2.5	-1.5
- Theft of Motor Vehicle	62	36	-26	-41.9	4	3	-1	-25.0	6.5	8.3	1.9
- Vehicle Interference	23	19	-4	-17.4	0	0	0	-	0.0	0.0	0.0
- Theft	371	293	-78	-21.0	55	29	-26	-47.3	14.8	9.9	-4.9
- Theft from the Person	26	26	0	0.0	1	0	-1	-100.0	3.8	0.0	-3.8
- Theft of Pedal Cycle	22	11	-11	-50.0	0	0	0	-	0.0	0.0	0.0
- Shoplifting	82	47	-35	-42.7	38	14	-24	-63.2	46.3	29.8	-16.6
- Other Theft	241	209	-32	-13.3	16	15	-1	-6.3	6.6	7.2	0.5
Criminal Damage inc. Arson	226	221	-5	-2.2	28	18	-10	-35.7	12.4	8.1	-4.2
- Criminal Damage	223	215	-8	-3.6	25	17	-8	-32.0	11.2	7.9	-3.3
- Arson	3	6	3	100.0	3	1	-2	-66.7	100.0	16.7	-83.3
Racial/Religiously Aggravated Offences	6	5	-1	-16.7	2	1	-1	-50.0	33.3	20.0	-13.3
State Based Crime	Offences				Outcomes				Solved Rates %		
Crime Type	2014	2015	# diff.	% diff.	2014	2015	# diff.	% diff.	2014	2015	% pt. diff.
Drug Offences	47	41	-6	-12.8	39	38	-1	-2.6	83.0	92.7	9.7
- Trafficking of Drugs	11	10	-1	-9.1	8	8	0	0.0	72.7	80.0	7.3
- Possession of Drugs	36	31	-5	-13.9	31	30	-1	-3.2	86.1	96.8	10.7
Possession of Weapons	7	8	1	14.3	6	6	0	0.0	85.7	75.0	-10.7
Public Order	55	76	21	38.2	31	26	-5	-16.1	56.4	34.2	-22.2
Miscellaneous Crimes against Society	13	14	1	7.7	8	7	-1	-12.5	61.5	50.0	-11.5

Corporate Services: Performance Summary
Essex Police Performance Summary

Maldon

Rolling 12 Months to November

Top Level	Offences				Outcomes				Solved Rates %		
Crime Type	2014	2015	# diff.	% diff.	2014	2015	# diff.	% diff.	2014	2015	% pt. diff.
Anti-Social Behaviour (incidents)	1127	1104	-23	-2.0	-	-	-	-	-	-	-
All Crime (excl. Action (NFIB) Fraud)	2295	2295	0	0.0	508	423	-85	-16.7	22.1	18.4	-3.7
- State Based Crime	166	199	33	19.9	115	116	1	0.9	69.3	58.3	-11.0
- Victim Based Crime	2129	2096	-33	-1.6	393	307	-86	-21.9	18.5	14.6	-3.8
Victim Based Crime	Offences				Outcomes				Solved Rates %		
Crime Type	2014	2015	# diff.	% diff.	2014	2015	# diff.	% diff.	2014	2015	% pt. diff.
Violence Against the Person	490	623	133	27.1	185	184	-1	-0.5	37.8	29.5	-8.2
- Homicide	1	1	0	0.0	0	1	1	-	0.0	100.0	100.0
- Violence with Injury	208	272	64	30.8	81	98	17	21.0	38.9	36.0	-2.9
- Violence without Injury	281	350	69	24.6	104	85	-19	-18.3	37.0	24.3	-12.7
Sexual Offences	39	76	37	94.9	9	11	2	22.2	23.1	14.5	-8.6
- Rape	17	40	23	135.3	4	1	-3	-75.0	23.5	2.5	-21.0
- Rape - Under 16 yrs	11	23	12	109.1	1	1	0	0.0	9.1	4.3	-4.7
- Rape - Over 16 yrs	6	17	11	183.3	3	0	-3	-100.0	50.0	0.0	-50.0
- Other Sexual Offences	22	36	14	63.6	5	10	5	100.0	22.7	27.8	5.1
Robbery	16	10	-6	-37.5	6	5	-1	-16.7	37.5	50.0	12.5
- Robbery of business property	2	3	1	50.0	0	0	0	-	0.0	0.0	0.0
- Robbery of Personal Property	14	7	-7	-50.0	6	5	-1	-16.7	42.9	71.4	28.6
Theft Offences	1247	1072	-175	-14.0	149	71	-78	-52.3	11.9	6.6	-5.3
- Burglary	313	358	45	14.4	23	4	-19	-82.6	7.3	1.1	-6.2
- Dwelling Burglary	87	100	13	14.9	20	1	-19	-95.0	23.0	1.0	-22.0
- Other Burglary	226	258	32	14.2	3	3	0	0.0	1.3	1.2	-0.2
- Vehicle Offences (incl. Interference)	375	283	-92	-24.5	30	11	-19	-63.3	8.0	3.9	-4.1
- Theft from Vehicle	249	184	-65	-26.1	24	6	-18	-75.0	9.6	3.3	-6.4
- Theft of Motor Vehicle	99	65	-34	-34.3	6	5	-1	-16.7	6.1	7.7	1.6
- Vehicle Interference	27	34	7	25.9	0	0	0	-	0.0	0.0	0.0
- Theft	559	431	-128	-22.9	96	56	-40	-41.7	17.2	13.0	-4.2
- Theft from the Person	33	34	1	3.0	1	0	-1	-100.0	3.0	0.0	-3.0
- Theft of Pedal Cycle	31	20	-11	-35.5	0	0	0	-	0.0	0.0	0.0
- Shoplifting	119	76	-43	-36.1	61	32	-29	-47.5	51.3	42.1	-9.2
- Other Theft	376	301	-75	-19.9	34	24	-10	-29.4	9.0	8.0	-1.1
Criminal Damage inc. Arson	337	315	-22	-6.5	44	36	-8	-18.2	13.1	11.4	-1.6
- Criminal Damage	329	303	-26	-7.9	41	34	-7	-17.1	12.5	11.2	-1.2
- Arson	8	12	4	50.0	3	2	-1	-33.3	37.5	16.7	-20.8
Racial/Religiously Aggravated Offences	10	8	-2	-20.0	4	3	-1	-25.0	40.0	37.5	-2.5
State Based Crime	Offences				Outcomes				Solved Rates %		
Crime Type	2014	2015	# diff.	% diff.	2014	2015	# diff.	% diff.	2014	2015	% pt. diff.
Drug Offences	60	61	1	1.7	52	60	8	15.4	86.7	98.4	11.7
- Trafficking of Drugs	13	17	4	30.8	9	13	4	44.4	69.2	76.5	7.2
- Possession of Drugs	47	44	-3	-6.4	43	47	4	9.3	91.5	106.8	15.3
Possession of Weapons	10	12	2	20.0	8	10	2	25.0	80.0	83.3	3.3
Public Order	76	99	23	30.3	43	37	-6	-14.0	56.6	37.4	-19.2
Miscellaneous Crimes against Society	20	27	7	35.0	12	9	-3	-25.0	60.0	33.3	-26.7

Corporate Services: Performance Summary
Essex Police Performance Summary

Colchester
Cumulative Year to November

Top Level	Offences				Outcomes				Solved Rates %		
Crime Type	2014	2015	# diff.	% diff.	2014	2015	# diff.	% diff.	2014	2015	% pt. diff.
Anti-Social Behaviour (incidents)	4298	3967	-331	-7.7	-	-	-	-	-	-	-
All Crime (excl. Action (NFIB) Fraud)	7159	8109	950	13.3	1938	1866	-72	-3.7	27.1	23.0	-4.1
- State Based Crime	636	824	188	29.6	427	419	-8	-1.9	67.1	50.8	-16.3
- Victim Based Crime	6523	7285	762	11.7	1511	1447	-64	-4.2	23.2	19.9	-3.3
Victim Based Crime	Offences				Outcomes				Solved Rates %		
Crime Type	2014	2015	# diff.	% diff.	2014	2015	# diff.	% diff.	2014	2015	% pt. diff.
Violence Against the Person	1842	2357	515	28.0	642	582	-60	-9.3	34.9	24.7	-10.2
- Homicide	2	0	-2	-100.0	1	2	1	100.0	50.0	-	-
- Violence with Injury	880	936	56	6.4	345	267	-78	-22.6	39.2	28.5	-10.7
- Violence without Injury	960	1421	461	48.0	296	313	17	5.7	30.8	22.0	-8.8
Sexual Offences	181	225	44	24.3	25	38	13	52.0	13.8	16.9	3.1
- Rape	76	92	16	21.1	6	6	0	0.0	7.9	6.5	-1.4
- Rape - Under 16 yrs	25	27	2	8.0	1	1	0	0.0	4.0	3.7	-0.3
- Rape - Over 16 yrs	51	65	14	27.5	5	5	0	0.0	9.8	7.7	-2.1
- Other Sexual Offences	105	133	28	26.7	19	32	13	68.4	18.1	24.1	6.0
Robbery	46	61	15	32.6	18	15	-3	-16.7	39.1	24.6	-14.5
- Robbery of business property	3	3	0	0.0	2	3	1	50.0	66.7	100.0	33.3
- Robbery of Personal Property	43	58	15	34.9	16	12	-4	-25.0	37.2	20.7	-16.5
Theft Offences	3351	3571	220	6.6	638	635	-3	-0.5	19.0	17.8	-1.3
- Burglary	809	884	75	9.3	79	85	6	7.6	9.8	9.6	-0.1
- Dwelling Burglary	331	433	102	30.8	40	71	31	77.5	12.1	16.4	4.3
- Other Burglary	478	451	-27	-5.6	39	14	-25	-64.1	8.2	3.1	-5.1
- Vehicle Offences (incl. Interference)	499	547	48	9.6	40	16	-24	-60.0	8.0	2.9	-5.1
- Theft from Vehicle	307	349	42	13.7	17	3	-14	-82.4	5.5	0.9	-4.7
- Theft of Motor Vehicle	133	141	8	6.0	20	13	-7	-35.0	15.0	9.2	-5.8
- Vehicle Interference	59	57	-2	-3.4	3	0	-3	-100.0	5.1	0.0	-5.1
- Theft	2043	2140	97	4.7	519	534	15	2.9	25.4	25.0	-0.5
- Theft from the Person	88	138	50	56.8	2	10	8	400.0	2.3	7.2	5.0
- Theft of Pedal Cycle	294	292	-2	-0.7	15	26	11	73.3	5.1	8.9	3.8
- Shoplifting	721	826	105	14.6	423	403	-20	-4.7	58.7	48.8	-9.9
- Other Theft	940	884	-56	-6.0	79	95	16	20.3	8.4	10.7	2.3
Criminal Damage inc. Arson	1103	1071	-32	-2.9	188	177	-11	-5.9	17.0	16.5	-0.5
- Criminal Damage	1085	1042	-43	-4.0	186	173	-13	-7.0	17.1	16.6	-0.5
- Arson	18	29	11	61.1	2	4	2	100.0	11.1	13.8	2.7
Racial/Religiously Aggravated Offences	73	60	-13	-17.8	32	21	-11	-34.4	43.8	35.0	-8.8
State Based Crime	Offences				Outcomes				Solved Rates %		
Crime Type	2014	2015	# diff.	% diff.	2014	2015	# diff.	% diff.	2014	2015	% pt. diff.
Drug Offences	259	218	-41	-15.8	241	192	-49	-20.3	93.1	88.1	-5.0
- Trafficking of Drugs	29	81	52	179.3	26	53	27	103.8	89.7	65.4	-24.2
- Possession of Drugs	230	137	-93	-40.4	215	139	-76	-35.3	93.5	101.5	8.0
Possession of Weapons	30	45	15	50.0	21	28	7	33.3	70.0	62.2	-7.8
Public Order	279	444	165	59.1	124	148	24	19.4	44.4	33.3	-11.1
Miscellaneous Crimes against Society	68	117	49	72.1	41	51	10	24.4	60.3	43.6	-16.7

Corporate Services: Performance Summary
Essex Police Performance Summary

Colchester

Rolling 12 Months to November

Top Level	Offences				Outcomes				Solved Rates %		
Crime Type	2014	2015	# diff.	% diff.	2014	2015	# diff.	% diff.	2014	2015	% pt. diff.
Anti-Social Behaviour (incidents)	5743	5635	-108	-1.9	-	-	-	-	-	-	-
All Crime (excl. Action (NFIB) Fraud)	10733	11893	1160	10.8	2937	2958	21	0.7	27.4	24.9	-2.5
- State Based Crime	932	1133	201	21.6	647	647	0	0.0	69.4	57.1	-12.3
- Victim Based Crime	9801	10760	959	9.8	2290	2311	21	0.9	23.4	21.5	-1.9
Victim Based Crime	Offences				Outcomes				Solved Rates %		
Crime Type	2014	2015	# diff.	% diff.	2014	2015	# diff.	% diff.	2014	2015	% pt. diff.
Violence Against the Person	2728	3329	601	22.0	967	933	-34	-3.5	35.4	28.0	-7.4
- Homicide	3	0	-3	-100.0	1	2	1	100.0	33.3	-	-
- Violence with Injury	1293	1349	56	4.3	505	436	-69	-13.7	39.1	32.3	-6.7
- Violence without Injury	1432	1980	548	38.3	461	495	34	7.4	32.2	25.0	-7.2
Sexual Offences	263	353	90	34.2	48	55	7	14.6	18.3	15.6	-2.7
- Rape	109	133	24	22.0	14	8	-6	-42.9	12.8	6.0	-6.8
- Rape - Under 16 yrs	35	36	1	2.9	7	2	-5	-71.4	20.0	5.6	-14.4
- Rape - Over 16 yrs	74	97	23	31.1	7	6	-1	-14.3	9.5	6.2	-3.3
- Other Sexual Offences	154	220	66	42.9	34	47	13	38.2	22.1	21.4	-0.7
Robbery	75	92	17	22.7	25	23	-2	-8.0	33.3	25.0	-8.3
- Robbery of business property	7	4	-3	-42.9	3	3	0	0.0	42.9	75.0	32.1
- Robbery of Personal Property	68	88	20	29.4	22	20	-2	-9.1	32.4	22.7	-9.6
Theft Offences	5047	5360	313	6.2	981	1031	50	5.1	19.4	19.2	-0.2
- Burglary	1208	1402	194	16.1	117	124	7	6.0	9.7	8.8	-0.8
- Dwelling Burglary	509	736	227	44.6	56	104	48	85.7	11.0	14.1	3.1
- Other Burglary	699	666	-33	-4.7	61	20	-41	-67.2	8.7	3.0	-5.7
- Vehicle Offences (incl. Interference)	788	864	76	9.6	48	34	-14	-29.2	6.1	3.9	-2.2
- Theft from Vehicle	512	537	25	4.9	18	5	-13	-72.2	3.5	0.9	-2.6
- Theft of Motor Vehicle	204	229	25	12.3	27	29	2	7.4	13.2	12.7	-0.6
- Vehicle Interference	72	98	26	36.1	3	0	-3	-100.0	4.2	0.0	-4.2
- Theft	3051	3094	43	1.4	816	873	57	7.0	26.7	28.2	1.5
- Theft from the Person	155	184	29	18.7	2	10	8	400.0	1.3	5.4	4.1
- Theft of Pedal Cycle	416	367	-49	-11.8	25	26	1	4.0	6.0	7.1	1.1
- Shoplifting	1067	1227	160	15.0	656	671	15	2.3	61.5	54.7	-6.8
- Other Theft	1413	1316	-97	-6.9	133	166	33	24.8	9.4	12.6	3.2
Criminal Damage inc. Arson	1688	1626	-62	-3.7	269	269	0	0.0	15.9	16.5	0.6
- Criminal Damage	1661	1578	-83	-5.0	267	262	-5	-1.9	16.1	16.6	0.5
- Arson	27	48	21	77.8	2	7	5	250.0	7.4	14.6	7.2
Racial/Religiously Aggravated Offences	102	86	-16	-15.7	41	32	-9	-22.0	40.2	37.2	-3.0
State Based Crime	Offences				Outcomes				Solved Rates %		
Crime Type	2014	2015	# diff.	% diff.	2014	2015	# diff.	% diff.	2014	2015	% pt. diff.
Drug Offences	355	321	-34	-9.6	335	302	-33	-9.9	94.4	94.1	-0.3
- Trafficking of Drugs	39	95	56	143.6	35	65	30	85.7	89.7	68.4	-21.3
- Possession of Drugs	316	226	-90	-28.5	300	237	-63	-21.0	94.9	104.9	9.9
Possession of Weapons	54	61	7	13.0	42	40	-2	-4.8	77.8	65.6	-12.2
Public Order	415	587	172	41.4	205	226	21	10.2	49.4	38.5	-10.9
Miscellaneous Crimes against Society	108	164	56	51.9	65	79	14	21.5	60.2	48.2	-12.0

Corporate Services: Performance Summary

Essex Police Performance Summary

Trending

Cumulative Year to November

Top Level	Offences				Outcomes				Solved Rates %		
Crime Type	2014	2015	# diff.	% diff.	2014	2015	# diff.	% diff.	2014	2015	% pt. diff.
Anti-Social Behaviour (incidents)	3554	3447	-107	-3.0	-	-	-	-	-	-	-
All Crime (excl. Action (NFIB) Fraud)	6478	6607	129	2.0	1774	1662	-112	-6.3	27.4	25.2	-2.2
- State Based Crime	597	657	60	10.1	382	315	-67	-17.5	64.0	47.9	-16.0
- Victim Based Crime	5881	5950	69	1.2	1392	1347	-45	-3.2	23.7	22.6	-1.0
Victim Based Crime	Offences				Outcomes				Solved Rates %		
Crime Type	2014	2015	# diff.	% diff.	2014	2015	# diff.	% diff.	2014	2015	% pt. diff.
Violence Against the Person	1779	2083	304	17.1	633	605	-28	-4.4	35.6	29.0	-6.5
- Homicide	1	3	2	200.0	0	1	1	-	0.0	33.3	33.3
- Violence with Injury	806	840	34	4.2	284	265	-19	-6.7	35.2	31.5	-3.7
- Violence without Injury	972	1240	268	27.6	349	339	-10	-2.9	35.9	27.3	-8.6
Sexual Offences	171	188	17	9.9	24	29	5	20.8	14.0	15.4	1.4
- Rape	50	60	10	20.0	6	8	2	33.3	12.0	13.3	1.3
- Rape - Under 16 yrs	12	17	5	41.7	5	3	-2	-40.0	41.7	17.6	-24.0
- Rape - Over 16 yrs	38	43	5	13.2	1	5	4	400.0	2.6	11.6	9.0
- Other Sexual Offences	121	128	7	5.8	18	21	3	16.7	14.9	16.4	1.5
Robbery	70	49	-21	-30.0	11	10	-1	-9.1	15.7	20.4	4.7
- Robbery of business property	2	6	4	200.0	0	3	3	-	0.0	50.0	50.0
- Robbery of Personal Property	68	43	-25	-36.8	11	7	-4	-36.4	16.2	16.3	0.1
Theft Offences	2918	2743	-175	-6.0	572	554	-18	-3.1	19.6	20.2	0.6
- Burglary	811	778	-33	-4.1	62	88	26	41.9	7.6	11.3	3.7
- Dwelling Burglary	314	342	28	8.9	34	57	23	67.6	10.8	16.7	5.8
- Other Burglary	497	436	-61	-12.3	28	31	3	10.7	5.6	7.1	1.5
- Vehicle Offences (incl. Interference)	466	444	-22	-4.7	32	27	-5	-15.6	6.9	6.1	-0.8
- Theft from Vehicle	312	322	10	3.2	9	6	-3	-33.3	2.9	1.9	-1.0
- Theft of Motor Vehicle	119	82	-37	-31.1	22	16	-6	-27.3	18.5	19.5	1.0
- Vehicle Interference	35	40	5	14.3	1	5	4	400.0	2.9	12.5	9.6
- Theft	1641	1521	-120	-7.3	478	439	-39	-8.2	29.1	28.9	-0.3
- Theft from the Person	63	94	31	49.2	2	3	1	50.0	3.2	3.2	0.0
- Theft of Pedal Cycle	131	90	-41	-31.3	5	7	2	40.0	3.8	7.8	4.0
- Shoplifting	688	654	-34	-4.9	396	367	-29	-7.3	57.6	56.1	-1.4
- Other Theft	759	683	-76	-10.0	75	62	-13	-17.3	9.9	9.1	-0.8
Criminal Damage inc. Arson	943	887	-56	-5.9	152	149	-3	-2.0	16.1	16.8	0.7
- Criminal Damage	895	853	-42	-4.7	151	147	-4	-2.6	16.9	17.2	0.4
- Arson	48	34	-14	-29.2	1	2	1	100.0	2.1	5.9	3.8
Racial/Religiously Aggravated Offences	44	21	-23	-52.3	19	8	-11	-57.9	43.2	38.1	-5.1
State Based Crime	Offences				Outcomes				Solved Rates %		
Crime Type	2014	2015	# diff.	% diff.	2014	2015	# diff.	% diff.	2014	2015	% pt. diff.
Drug Offences	209	145	-64	-30.6	188	130	-58	-30.9	90.0	89.7	-0.3
- Trafficking of Drugs	32	40	8	25.0	27	32	5	18.5	84.4	80.0	-4.4
- Possession of Drugs	177	105	-72	-40.7	161	98	-63	-39.1	91.0	93.3	2.4
Possession of Weapons	43	42	-1	-2.3	38	30	-8	-21.1	88.4	71.4	-16.9
Public Order	266	342	76	28.6	125	116	-9	-7.2	47.0	33.9	-13.1
Miscellaneous Crimes against Society	79	128	49	62.0	31	39	8	25.8	39.2	30.5	-8.8

Corporate Services: Performance Summary
Essex Police Performance Summary

Trending
Rolling 12 Months to November

Top Level	Offences				Outcomes				Solved Rates %		
Crime Type	2014	2015	# diff.	% diff.	2014	2015	# diff.	% diff.	2014	2015	% pt. diff.
Anti-Social Behaviour (incidents)	4779	4760	-19	-0.4	-	-	-	-	-	-	-
All Crime (excl. Action (NFIB) Fraud)	9230	9344	114	1.2	2778	2586	-192	-6.9	30.1	27.7	-2.4
- State Based Crime	841	903	62	7.4	572	484	-88	-15.4	68.0	53.6	-14.4
- Victim Based Crime	8389	8441	52	0.6	2206	2102	-104	-4.7	26.3	24.9	-1.4
Victim Based Crime	Offences				Outcomes				Solved Rates %		
Crime Type	2014	2015	# diff.	% diff.	2014	2015	# diff.	% diff.	2014	2015	% pt. diff.
Violence Against the Person	2498	2858	360	14.4	957	909	-48	-5.0	38.3	31.8	-6.5
- Homicide	1	3	2	200.0	0	1	1	-	0.0	33.3	33.3
- Violence with Injury	1146	1148	2	0.2	443	397	-46	-10.4	38.7	34.6	-4.1
- Violence without Injury	1351	1707	356	26.4	514	511	-3	-0.6	38.0	29.9	-8.1
Sexual Offences	236	269	33	14.0	53	46	-7	-13.2	22.5	17.1	-5.4
- Rape	75	93	18	24.0	14	12	-2	-14.3	18.7	12.9	-5.8
- Rape - Under 16 yrs	19	29	10	52.6	10	4	-6	-60.0	52.6	13.8	-38.8
- Rape - Over 16 yrs	56	64	8	14.3	4	8	4	100.0	7.1	12.5	5.4
- Other Sexual Offences	161	176	15	9.3	39	34	-5	-12.8	24.2	19.3	-4.9
Robbery	92	70	-22	-23.9	20	14	-6	-30.0	21.7	20.0	-1.7
- Robbery of business property	3	8	5	166.7	0	3	3	-	0.0	37.5	37.5
- Robbery of Personal Property	89	62	-27	-30.3	20	11	-9	-45.0	22.5	17.7	-4.7
Theft Offences	4164	3943	-221	-5.3	934	909	-25	-2.7	22.4	23.1	0.6
- Burglary	1202	1079	-123	-10.2	117	166	49	41.9	9.7	15.4	5.7
- Dwelling Burglary	507	469	-38	-7.5	68	94	26	38.2	13.4	20.0	6.6
- Other Burglary	695	610	-85	-12.2	49	72	23	46.9	7.1	11.8	4.8
- Vehicle Offences (incl. Interference)	643	645	2	0.3	56	44	-12	-21.4	8.7	6.8	-1.9
- Theft from Vehicle	424	451	27	6.4	24	10	-14	-58.3	5.7	2.2	-3.4
- Theft of Motor Vehicle	170	131	-39	-22.9	31	29	-2	-6.5	18.2	22.1	3.9
- Vehicle Interference	49	63	14	28.6	1	5	4	400.0	2.0	7.9	5.9
- Theft	2319	2219	-100	-4.3	761	699	-62	-8.1	32.8	31.5	-1.3
- Theft from the Person	87	108	21	24.1	3	5	2	66.7	3.4	4.6	1.2
- Theft of Pedal Cycle	168	125	-43	-25.6	9	8	-1	-11.1	5.4	6.4	1.0
- Shoplifting	991	995	4	0.4	624	581	-43	-6.9	63.0	58.4	-4.6
- Other Theft	1073	991	-82	-7.6	125	105	-20	-16.0	11.6	10.6	-1.1
Criminal Damage inc. Arson	1399	1301	-98	-7.0	242	224	-18	-7.4	17.3	17.2	-0.1
- Criminal Damage	1338	1247	-91	-6.8	236	218	-18	-7.6	17.6	17.5	-0.2
- Arson	61	54	-7	-11.5	6	6	0	0.0	9.8	11.1	1.3
Racial/Religiously Aggravated Offences	61	39	-22	-36.1	27	13	-14	-51.9	44.3	33.3	-10.9
State Based Crime	Offences				Outcomes				Solved Rates %		
Crime Type	2014	2015	# diff.	% diff.	2014	2015	# diff.	% diff.	2014	2015	% pt. diff.
Drug Offences	292	233	-59	-20.2	268	225	-43	-16.0	91.8	96.6	4.8
- Trafficking of Drugs	44	60	16	36.4	34	50	16	47.1	77.3	83.3	6.1
- Possession of Drugs	248	173	-75	-30.2	234	175	-59	-25.2	94.4	101.2	6.8
Possession of Weapons	61	60	-1	-1.6	51	38	-13	-25.5	83.6	63.3	-20.3
Public Order	373	447	74	19.8	195	164	-31	-15.9	52.3	36.7	-15.6
Miscellaneous Crimes against Society	115	163	48	41.7	58	57	-1	-1.7	50.4	35.0	-15.5

Corporate Services: Performance Summary

Essex Police Performance Summary

Southend

Cumulative Year to November

Top Level	Offences				Outcomes				Solved Rates %		
Crime Type	2014	2015	# diff.	% diff.	2014	2015	# diff.	% diff.	2014	2015	% pt. diff.
Anti-Social Behaviour (incidents)	5695	5137	-558	-9.8	-	-	-	-	-	-	-
All Crime (excl. Action (NFIB) Fraud)	8870	9600	730	8.2	2582	1951	-631	-24.4	29.1	20.3	-8.8
- State Based Crime	1082	983	-99	-9.1	789	461	-328	-41.6	72.9	46.9	-26.0
- Victim Based Crime	7788	8617	829	10.6	1793	1490	-303	-16.9	23.0	17.3	-5.7
Victim Based Crime	Offences				Outcomes				Solved Rates %		
Crime Type	2014	2015	# diff.	% diff.	2014	2015	# diff.	% diff.	2014	2015	% pt. diff.
Violence Against the Person	2138	2636	498	23.3	778	659	-119	-15.3	36.4	25.0	-11.4
- Homicide	2	4	2	100.0	1	2	1	100.0	50.0	50.0	0.0
- Violence with Injury	994	1055	61	6.1	375	300	-75	-20.0	37.7	28.4	-9.3
- Violence without Injury	1142	1577	435	38.1	402	357	-45	-11.2	35.2	22.6	-12.6
Sexual Offences	222	221	-1	-0.5	35	35	0	0.0	15.8	15.8	0.1
- Rape	97	79	-18	-18.6	15	10	-5	-33.3	15.5	12.7	-2.8
- Rape - Under 16 yrs	25	19	-6	-24.0	6	5	-1	-16.7	24.0	26.3	2.3
- Rape - Over 16 yrs	72	60	-12	-16.7	9	5	-4	-44.4	12.5	8.3	-4.2
- Other Sexual Offences	125	142	17	13.6	20	25	5	25.0	16.0	17.6	1.6
Robbery	101	112	11	10.9	14	20	6	42.9	13.9	17.9	4.0
- Robbery of business property	8	7	-1	-12.5	4	4	0	0.0	50.0	57.1	7.1
- Robbery of Personal Property	93	105	12	12.9	10	16	6	60.0	10.8	15.2	4.5
Theft Offences	4170	4375	205	4.9	756	584	-172	-22.8	18.1	13.3	-4.8
- Burglary	896	967	71	7.9	91	65	-26	-28.6	10.2	6.7	-3.4
- Dwelling Burglary	509	600	91	17.9	70	45	-25	-35.7	13.8	7.5	-6.3
- Other Burglary	387	367	-20	-5.2	21	20	-1	-4.8	5.4	5.4	0.0
- Vehicle Offences (incl. Interference)	1121	1124	3	0.3	56	47	-9	-16.1	5.0	4.2	-0.8
- Theft from Vehicle	743	768	25	3.4	15	15	0	0.0	2.0	2.0	-0.1
- Theft of Motor Vehicle	251	234	-17	-6.8	35	31	-4	-11.4	13.9	13.2	-0.7
- Vehicle Interference	127	122	-5	-3.9	6	1	-5	-83.3	4.7	0.8	-3.9
- Theft	2153	2284	131	6.1	609	472	-137	-22.5	28.3	20.7	-7.6
- Theft from the Person	160	172	12	7.5	3	6	3	100.0	1.9	3.5	1.6
- Theft of Pedal Cycle	268	273	5	1.9	7	3	-4	-57.1	2.6	1.1	-1.5
- Shoplifting	760	820	60	7.9	487	373	-114	-23.4	64.1	45.5	-18.6
- Other Theft	965	1019	54	5.6	112	90	-22	-19.6	11.6	8.8	-2.8
Criminal Damage inc. Arson	1157	1273	116	10.0	210	192	-18	-8.6	18.2	15.1	-3.1
- Criminal Damage	1109	1244	135	12.2	201	188	-13	-6.5	18.1	15.1	-3.0
- Arson	48	29	-19	-39.6	9	4	-5	-55.6	18.8	13.8	-5.0
Racial/Religiously Aggravated Offences	90	82	-8	-8.9	31	18	-13	-41.9	34.4	22.0	-12.5
State Based Crime	Offences				Outcomes				Solved Rates %		
Crime Type	2014	2015	# diff.	% diff.	2014	2015	# diff.	% diff.	2014	2015	% pt. diff.
Drug Offences	467	214	-253	-54.2	451	183	-268	-59.4	96.6	85.5	-11.1
- Trafficking of Drugs	160	65	-95	-59.4	150	46	-104	-69.3	93.8	70.8	-23.0
- Possession of Drugs	307	149	-158	-51.5	301	137	-164	-54.5	98.0	91.9	-6.1
Possession of Weapons	72	82	10	13.9	58	54	-4	-6.9	80.6	65.9	-14.7
Public Order	431	561	130	30.2	219	173	-46	-21.0	50.8	30.8	-20.0
Miscellaneous Crimes against Society	112	126	14	12.5	61	51	-10	-16.4	54.5	40.5	-14.0

Corporate Services: Performance Summary
Essex Police Performance Summary

Southend

Rolling 12 Months to November

Top Level	Offences				Outcomes				Solved Rates %		
Crime Type	2014	2015	# diff.	% diff.	2014	2015	# diff.	% diff.	2014	2015	% pt. diff.
Anti-Social Behaviour (incidents)	7689	7390	-299	-3.9	-	-	-	-	-	-	-
All Crime (excl. Action (NFIB) Fraud)	13127	13630	503	3.8	3924	3137	-787	-20.1	29.9	23.0	-6.9
- State Based Crime	1572	1434	-138	-8.8	1162	817	-345	-29.7	73.9	57.0	-16.9
- Victim Based Crime	11555	12196	641	5.5	2762	2320	-442	-16.0	23.9	19.0	-4.9
Victim Based Crime	Offences				Outcomes				Solved Rates %		
Crime Type	2014	2015	# diff.	% diff.	2014	2015	# diff.	% diff.	2014	2015	% pt. diff.
Violence Against the Person	3076	3643	567	18.4	1180	1040	-140	-11.9	38.4	28.5	-9.8
- Homicide	4	4	0	0.0	2	3	1	50.0	50.0	75.0	25.0
- Violence with Injury	1452	1484	32	2.2	570	475	-95	-16.7	39.3	32.0	-7.2
- Violence without Injury	1620	2155	535	33.0	608	562	-46	-7.6	37.5	26.1	-11.5
Sexual Offences	306	339	33	10.8	52	54	2	3.8	17.0	15.9	-1.1
- Rape	133	114	-19	-14.3	23	19	-4	-17.4	17.3	16.7	-0.6
- Rape - Under 16 yrs	37	29	-8	-21.6	8	9	1	12.5	21.6	31.0	9.4
- Rape - Over 16 yrs	96	85	-11	-11.5	15	10	-5	-33.3	15.6	11.8	-3.9
- Other Sexual Offences	173	225	52	30.1	29	35	6	20.7	16.8	15.6	-1.2
Robbery	157	169	12	7.6	31	35	4	12.9	19.7	20.7	1.0
- Robbery of business property	10	11	1	10.0	4	5	1	25.0	40.0	45.5	5.5
- Robbery of Personal Property	147	158	11	7.5	27	30	3	11.1	18.4	19.0	0.6
Theft Offences	6304	6206	-98	-1.6	1182	922	-260	-22.0	18.8	14.9	-3.9
- Burglary	1503	1404	-99	-6.6	134	100	-34	-25.4	8.9	7.1	-1.8
- Dwelling Burglary	891	872	-19	-2.1	104	66	-38	-36.5	11.7	7.6	-4.1
- Other Burglary	612	532	-80	-13.1	30	34	4	13.3	4.9	6.4	1.5
- Vehicle Offences (incl. Interference)	1569	1581	12	0.8	90	70	-20	-22.2	5.7	4.4	-1.3
- Theft from Vehicle	1084	1061	-23	-2.1	29	25	-4	-13.8	2.7	2.4	-0.3
- Theft of Motor Vehicle	324	354	30	9.3	54	43	-11	-20.4	16.7	12.1	-4.5
- Vehicle Interference	161	166	5	3.1	7	2	-5	-71.4	4.3	1.2	-3.1
- Theft	3232	3221	-11	-0.3	958	752	-206	-21.5	29.6	23.3	-6.3
- Theft from the Person	226	232	6	2.7	6	7	1	16.7	2.7	3.0	0.4
- Theft of Pedal Cycle	365	345	-20	-5.5	16	10	-6	-37.5	4.4	2.9	-1.5
- Shoplifting	1177	1159	-18	-1.5	768	598	-170	-22.1	65.3	51.6	-13.7
- Other Theft	1464	1485	21	1.4	168	137	-31	-18.5	11.5	9.2	-2.2
Criminal Damage inc. Arson	1712	1839	127	7.4	317	269	-48	-15.1	18.5	14.6	-3.9
- Criminal Damage	1644	1792	148	9.0	304	265	-39	-12.8	18.5	14.8	-3.7
- Arson	68	47	-21	-30.9	13	4	-9	-69.2	19.1	8.5	-10.6
Racial/Religiously Aggravated Offences	131	122	-9	-6.9	50	38	-12	-24.0	38.2	31.1	-7.0
State Based Crime	Offences				Outcomes				Solved Rates %		
Crime Type	2014	2015	# diff.	% diff.	2014	2015	# diff.	% diff.	2014	2015	% pt. diff.
Drug Offences	679	393	-286	-42.1	646	367	-279	-43.2	95.1	93.4	-1.8
- Trafficking of Drugs	190	124	-66	-34.7	177	101	-76	-42.9	93.2	81.5	-11.7
- Possession of Drugs	489	269	-220	-45.0	469	266	-203	-43.3	95.9	98.9	3.0
Possession of Weapons	117	96	-21	-17.9	94	70	-24	-25.5	80.3	72.9	-7.4
Public Order	613	741	128	20.9	325	277	-48	-14.8	53.0	37.4	-15.6
Miscellaneous Crimes against Society	163	204	41	25.2	97	103	6	6.2	59.5	50.5	-9.0

Corporate Services: Performance Summary
Essex Police Performance Summary

Castle Point
Cumulative Year to November

Top Level	Offences				Outcomes				Solved Rates %		
Crime Type	2014	2015	# diff.	% diff.	2014	2015	# diff.	% diff.	2014	2015	% pt. diff.
Anti-Social Behaviour (incidents)	1645	1421	-224	-13.6	-	-	-	-	-	-	-
All Crime (excl. Action (NFIB) Fraud)	2275	2669	394	17.3	553	516	-37	-6.7	24.3	19.3	-5.0
- State Based Crime	222	255	33	14.9	137	110	-27	-19.7	61.7	43.1	-18.6
- Victim Based Crime	2053	2414	361	17.6	416	406	-10	-2.4	20.3	16.8	-3.4
Victim Based Crime	Offences				Outcomes				Solved Rates %		
Crime Type	2014	2015	# diff.	% diff.	2014	2015	# diff.	% diff.	2014	2015	% pt. diff.
Violence Against the Person	555	723	168	30.3	184	178	-6	-3.3	33.2	24.6	-8.5
- Homicide	0	2	2	-	0	1	1	-	-	50.0	-
- Violence with Injury	286	300	14	4.9	98	81	-17	-17.3	34.3	27.0	-7.3
- Violence without Injury	269	421	152	56.5	86	96	10	11.6	32.0	22.8	-9.2
Sexual Offences	66	66	0	0.0	8	23	15	187.5	12.1	34.8	22.7
- Rape	22	22	0	0.0	2	3	1	50.0	9.1	13.6	4.5
- Rape - Under 16 yrs	6	9	3	50.0	1	2	1	100.0	16.7	22.2	5.6
- Rape - Over 16 yrs	16	13	-3	-18.8	1	1	0	0.0	6.3	7.7	1.4
- Other Sexual Offences	44	44	0	0.0	6	20	14	233.3	13.6	45.5	31.8
Robbery	20	27	7	35.0	3	8	5	166.7	15.0	29.6	14.6
- Robbery of business property	2	9	7	350.0	0	3	3	-	0.0	33.3	33.3
- Robbery of Personal Property	18	18	0	0.0	3	5	2	66.7	16.7	27.8	11.1
Theft Offences	1059	1230	171	16.1	185	138	-47	-25.4	17.5	11.2	-6.2
- Burglary	342	474	132	38.6	40	19	-21	-52.5	11.7	4.0	-7.7
- Dwelling Burglary	213	226	13	6.1	38	12	-26	-68.4	17.8	5.3	-12.5
- Other Burglary	129	248	119	92.2	2	7	5	250.0	1.6	2.8	1.3
- Vehicle Offences (incl. Interference)	212	274	62	29.2	22	21	-1	-4.5	10.4	7.7	-2.7
- Theft from Vehicle	125	161	36	28.8	13	8	-5	-38.5	10.4	5.0	-5.4
- Theft of Motor Vehicle	71	86	15	21.1	9	12	3	33.3	12.7	14.0	1.3
- Vehicle Interference	16	27	11	68.8	0	1	1	-	0.0	3.7	3.7
- Theft	505	482	-23	-4.6	123	98	-25	-20.3	24.4	20.3	-4.0
- Theft from the Person	16	29	13	81.3	1	2	1	100.0	6.3	6.9	0.6
- Theft of Pedal Cycle	65	36	-29	-44.6	6	2	-4	-66.7	9.2	5.6	-3.7
- Shoplifting	119	123	4	3.4	62	58	-4	-6.5	52.1	47.2	-4.9
- Other Theft	305	294	-11	-3.6	54	36	-18	-33.3	17.7	12.2	-5.5
Criminal Damage inc. Arson	353	368	15	4.2	36	59	23	63.9	10.2	16.0	5.8
- Criminal Damage	337	355	18	5.3	34	58	24	70.6	10.1	16.3	6.2
- Arson	16	13	-3	-18.8	2	1	-1	-50.0	12.5	7.7	-4.8
Racial/Religiously Aggravated Offences	11	13	2	18.2	1	4	3	300.0	9.1	30.8	21.7
State Based Crime	Offences				Outcomes				Solved Rates %		
Crime Type	2014	2015	# diff.	% diff.	2014	2015	# diff.	% diff.	2014	2015	% pt. diff.
Drug Offences	96	53	-43	-44.8	89	50	-39	-43.8	92.7	94.3	1.6
- Trafficking of Drugs	9	8	-1	-11.1	8	5	-3	-37.5	88.9	62.5	-26.4
- Possession of Drugs	87	45	-42	-48.3	81	45	-36	-44.4	93.1	100.0	6.9
Possession of Weapons	15	16	1	6.7	8	8	0	0.0	53.3	50.0	-3.3
Public Order	92	147	55	59.8	34	41	7	20.6	37.0	27.9	-9.1
Miscellaneous Crimes against Society	19	39	20	105.3	6	11	5	83.3	31.6	28.2	-3.4

Corporate Services: Performance Summary
Essex Police Performance Summary

Castle Point
Rolling 12 Months to November

Top Level	Offences				Outcomes				Solved Rates %		
Crime Type	2014	2015	# diff.	% diff.	2014	2015	# diff.	% diff.	2014	2015	% pt. diff.
Anti-Social Behaviour (incidents)	2168	2074	-94	-4.3	-	-	-	-	-	-	-
All Crime (excl. Action (NFIB) Fraud)	3448	3719	271	7.9	807	821	14	1.7	23.4	22.1	-1.3
- State Based Crime	314	356	42	13.4	203	175	-28	-13.8	64.6	49.2	-15.5
- Victim Based Crime	3134	3363	229	7.3	604	646	42	7.0	19.3	19.2	-0.1
Victim Based Crime	Offences				Outcomes				Solved Rates %		
Crime Type	2014	2015	# diff.	% diff.	2014	2015	# diff.	% diff.	2014	2015	% pt. diff.
Violence Against the Person	801	979	178	22.2	272	272	0	0.0	34.0	27.8	-6.2
- Homicide	0	2	2	-	0	1	1	-	-	50.0	-
- Violence with Injury	409	415	6	1.5	140	121	-19	-13.6	34.2	29.2	-5.1
- Violence without Injury	392	562	170	43.4	132	150	18	13.6	33.7	26.7	-7.0
Sexual Offences	90	103	13	14.4	12	36	24	200.0	13.3	35.0	21.6
- Rape	30	27	-3	-10.0	5	8	3	60.0	16.7	29.6	13.0
- Rape - Under 16 yrs	11	9	-2	-18.2	4	5	1	25.0	36.4	55.6	19.2
- Rape - Over 16 yrs	19	18	-1	-5.3	1	3	2	200.0	5.3	16.7	11.4
- Other Sexual Offences	60	76	16	26.7	7	28	21	300.0	11.7	36.8	25.2
Robbery	39	41	2	5.1	3	9	6	200.0	7.7	22.0	14.3
- Robbery of business property	10	16	6	60.0	0	4	4	-	0.0	25.0	25.0
- Robbery of Personal Property	29	25	-4	-13.8	3	5	2	66.7	10.3	20.0	9.7
Theft Offences	1661	1732	71	4.3	257	247	-10	-3.9	15.5	14.3	-1.2
- Burglary	540	657	117	21.7	47	32	-15	-31.9	8.7	4.9	-3.8
- Dwelling Burglary	350	344	-6	-1.7	44	20	-24	-54.5	12.6	5.8	-6.8
- Other Burglary	190	313	123	64.7	3	12	9	300.0	1.6	3.8	2.3
- Vehicle Offences (incl. Interference)	374	408	34	9.1	25	55	30	120.0	6.7	13.5	6.8
- Theft from Vehicle	235	240	5	2.1	13	38	25	192.3	5.5	15.8	10.3
- Theft of Motor Vehicle	111	121	10	9.0	12	15	3	25.0	10.8	12.4	1.6
- Vehicle Interference	28	47	19	67.9	0	2	2	-	0.0	4.3	4.3
- Theft	747	667	-80	-10.7	185	160	-25	-13.5	24.8	24.0	-0.8
- Theft from the Person	32	38	6	18.8	2	2	0	0.0	6.3	5.3	-1.0
- Theft of Pedal Cycle	75	57	-18	-24.0	6	7	1	16.7	8.0	12.3	4.3
- Shoplifting	183	167	-16	-8.7	105	87	-18	-17.1	57.4	52.1	-5.3
- Other Theft	457	405	-52	-11.4	72	64	-8	-11.1	15.8	15.8	0.0
Criminal Damage inc. Arson	543	508	-35	-6.4	60	82	22	36.7	11.0	16.1	5.1
- Criminal Damage	524	490	-34	-6.5	58	80	22	37.9	11.1	16.3	5.3
- Arson	19	18	-1	-5.3	2	2	0	0.0	10.5	11.1	0.6
Racial/Religiously Aggravated Offences	14	19	5	35.7	6	7	1	16.7	42.9	36.8	-6.0
State Based Crime	Offences				Outcomes				Solved Rates %		
Crime Type	2014	2015	# diff.	% diff.	2014	2015	# diff.	% diff.	2014	2015	% pt. diff.
Drug Offences	136	76	-60	-44.1	126	75	-51	-40.5	92.6	98.7	6.0
- Trafficking of Drugs	16	13	-3	-18.8	13	9	-4	-30.8	81.3	69.2	-12.0
- Possession of Drugs	120	63	-57	-47.5	113	66	-47	-41.6	94.2	104.8	10.6
Possession of Weapons	21	24	3	14.3	13	17	4	30.8	61.9	70.8	8.9
Public Order	119	195	76	63.9	45	62	17	37.8	37.8	31.8	-6.0
Miscellaneous Crimes against Society	38	61	23	60.5	19	21	2	10.5	50.0	34.4	-15.6

Corporate Services: Performance Summary
Essex Police Performance Summary

Rochford
Cumulative Year to November

Top Level	Offences				Outcomes				Solved Rates %		
Crime Type	2014	2015	# diff.	% diff.	2014	2015	# diff.	% diff.	2014	2015	% pt. diff.
Anti-Social Behaviour (incidents)	1241	1180	-61	-4.9	-	-	-	-	-	-	-
All Crime (excl. Action (NFIB) Fraud)	1769	2135	366	20.7	429	438	9	2.1	24.3	20.5	-3.7
- State Based Crime	147	173	26	17.7	97	76	-21	-21.6	66.0	43.9	-22.1
- Victim Based Crime	1622	1962	340	21.0	332	362	30	9.0	20.5	18.5	-2.0
Victim Based Crime	Offences				Outcomes				Solved Rates %		
Crime Type	2014	2015	# diff.	% diff.	2014	2015	# diff.	% diff.	2014	2015	% pt. diff.
Violence Against the Person	404	543	139	34.4	137	127	-10	-7.3	33.9	23.4	-10.5
- Homicide	1	0	-1	-100.0	0	1	1	-	0.0	-	-
- Violence with Injury	194	222	28	14.4	73	62	-11	-15.1	37.6	27.9	-9.7
- Violence without Injury	209	321	112	53.6	64	64	0	0.0	30.6	19.9	-10.7
Sexual Offences	45	52	7	15.6	10	12	2	20.0	22.2	23.1	0.9
- Rape	16	20	4	25.0	0	2	2	-	0.0	10.0	10.0
- Rape - Under 16 yrs	8	9	1	12.5	0	0	0	-	0.0	0.0	0.0
- Rape - Over 16 yrs	8	11	3	37.5	0	2	2	-	0.0	18.2	18.2
- Other Sexual Offences	29	32	3	10.3	10	10	0	0.0	34.5	31.3	-3.2
Robbery	10	16	6	60.0	2	4	2	100.0	20.0	25.0	5.0
- Robbery of business property	1	0	-1	-100.0	1	0	-1	-100.0	100.0	-	-
- Robbery of Personal Property	9	16	7	77.8	1	4	3	300.0	11.1	25.0	13.9
Theft Offences	891	1012	121	13.6	144	186	42	29.2	16.2	18.4	2.2
- Burglary	245	294	49	20.0	18	10	-8	-44.4	7.3	3.4	-3.9
- Dwelling Burglary	145	168	23	15.9	14	2	-12	-85.7	9.7	1.2	-8.5
- Other Burglary	100	126	26	26.0	4	8	4	100.0	4.0	6.3	2.3
- Vehicle Offences (incl. Interference)	187	207	20	10.7	7	8	1	14.3	3.7	3.9	0.1
- Theft from Vehicle	123	124	1	0.8	3	1	-2	-66.7	2.4	0.8	-1.6
- Theft of Motor Vehicle	51	73	22	43.1	3	7	4	133.3	5.9	9.6	3.7
- Vehicle Interference	13	10	-3	-23.1	1	0	-1	-100.0	7.7	0.0	-7.7
- Theft	459	511	52	11.3	119	168	49	41.2	25.9	32.9	7.0
- Theft from the Person	18	27	9	50.0	1	1	0	0.0	5.6	3.7	-1.9
- Theft of Pedal Cycle	31	49	18	58.1	0	1	1	-	0.0	2.0	2.0
- Shoplifting	186	228	42	22.6	97	150	53	54.6	52.2	65.8	13.6
- Other Theft	224	207	-17	-7.6	21	16	-5	-23.8	9.4	7.7	-1.6
Criminal Damage inc. Arson	272	339	67	24.6	39	33	-6	-15.4	14.3	9.7	-4.6
- Criminal Damage	264	329	65	24.6	39	32	-7	-17.9	14.8	9.7	-5.0
- Arson	8	10	2	25.0	0	1	1	-	0.0	10.0	10.0
Racial/Religiously Aggravated Offences	10	10	0	0.0	5	5	0	0.0	50.0	50.0	0.0
State Based Crime	Offences				Outcomes				Solved Rates %		
Crime Type	2014	2015	# diff.	% diff.	2014	2015	# diff.	% diff.	2014	2015	% pt. diff.
Drug Offences	57	39	-18	-31.6	55	38	-17	-30.9	96.5	97.4	0.9
- Trafficking of Drugs	20	9	-11	-55.0	18	7	-11	-61.1	90.0	77.8	-12.2
- Possession of Drugs	37	30	-7	-18.9	37	31	-6	-16.2	100.0	103.3	3.3
Possession of Weapons	10	14	4	40.0	7	11	4	57.1	70.0	78.6	8.6
Public Order	56	98	42	75.0	24	24	0	0.0	42.9	24.5	-18.4
Miscellaneous Crimes against Society	24	22	-2	-8.3	11	3	-8	-72.7	45.8	13.6	-32.2

Corporate Services: Performance Summary
Essex Police Performance Summary

Rochford
Rolling 12 Months to November

Top Level	Offences				Outcomes				Solved Rates %		
Crime Type	2014	2015	# diff.	% diff.	2014	2015	# diff.	% diff.	2014	2015	% pt. diff.
Anti-Social Behaviour (incidents)	1628	1660	32	2.0	-	-	-	-	-	-	-
All Crime (excl. Action (NFIB) Fraud)	2755	3060	305	11.1	685	710	25	3.6	24.9	23.2	-1.7
- State Based Crime	229	246	17	7.4	164	129	-35	-21.3	71.6	52.4	-19.2
- Victim Based Crime	2526	2814	288	11.4	521	581	60	11.5	20.6	20.6	0.0
Victim Based Crime	Offences				Outcomes				Solved Rates %		
Crime Type	2014	2015	# diff.	% diff.	2014	2015	# diff.	% diff.	2014	2015	% pt. diff.
Violence Against the Person	579	753	174	30.1	218	214	-4	-1.8	37.7	28.4	-9.2
- Homicide	1	0	-1	-100.0	0	1	1	-	0.0	-	-
- Violence with Injury	291	325	34	11.7	120	109	-11	-9.2	41.2	33.5	-7.7
- Violence without Injury	287	428	141	49.1	98	104	6	6.1	34.1	24.3	-9.8
Sexual Offences	60	75	15	25.0	12	19	7	58.3	20.0	25.3	5.3
- Rape	21	32	11	52.4	0	5	5	-	0.0	15.6	15.6
- Rape - Under 16 yrs	11	12	1	9.1	0	0	0	-	0.0	0.0	0.0
- Rape - Over 16 yrs	10	20	10	100.0	0	5	5	-	0.0	25.0	25.0
- Other Sexual Offences	39	43	4	10.3	12	14	2	16.7	30.8	32.6	1.8
Robbery	17	22	5	29.4	4	5	1	25.0	23.5	22.7	-0.8
- Robbery of business property	1	3	2	200.0	1	1	0	0.0	100.0	33.3	-66.7
- Robbery of Personal Property	16	19	3	18.8	3	4	1	33.3	18.8	21.1	2.3
Theft Offences	1424	1463	39	2.7	218	289	71	32.6	15.3	19.8	4.4
- Burglary	427	429	2	0.5	25	15	-10	-40.0	5.9	3.5	-2.4
- Dwelling Burglary	255	256	1	0.4	17	4	-13	-76.5	6.7	1.6	-5.1
- Other Burglary	172	173	1	0.6	8	11	3	37.5	4.7	6.4	1.7
- Vehicle Offences (incl. Interference)	334	312	-22	-6.6	9	13	4	44.4	2.7	4.2	1.5
- Theft from Vehicle	235	182	-53	-22.6	3	2	-1	-33.3	1.3	1.1	-0.2
- Theft of Motor Vehicle	75	112	37	49.3	5	11	6	120.0	6.7	9.8	3.2
- Vehicle Interference	24	18	-6	-25.0	1	0	-1	-100.0	4.2	0.0	-4.2
- Theft	663	722	59	8.9	184	261	77	41.8	27.8	36.1	8.4
- Theft from the Person	25	50	25	100.0	1	1	0	0.0	4.0	2.0	-2.0
- Theft of Pedal Cycle	39	50	11	28.2	0	2	2	-	0.0	4.0	4.0
- Shoplifting	243	302	59	24.3	148	228	80	54.1	60.9	75.5	14.6
- Other Theft	356	320	-36	-10.1	35	30	-5	-14.3	9.8	9.4	-0.5
Criminal Damage inc. Arson	446	501	55	12.3	69	54	-15	-21.7	15.5	10.8	-4.7
- Criminal Damage	431	484	53	12.3	68	52	-16	-23.5	15.8	10.7	-5.0
- Arson	15	17	2	13.3	1	2	1	100.0	6.7	11.8	5.1
Racial/Religiously Aggravated Offences	12	13	1	8.3	6	8	2	33.3	50.0	61.5	11.5
State Based Crime	Offences				Outcomes				Solved Rates %		
Crime Type	2014	2015	# diff.	% diff.	2014	2015	# diff.	% diff.	2014	2015	% pt. diff.
Drug Offences	105	73	-32	-30.5	104	69	-35	-33.7	99.0	94.5	-4.5
- Trafficking of Drugs	22	13	-9	-40.9	22	12	-10	-45.5	100.0	92.3	-7.7
- Possession of Drugs	83	60	-23	-27.7	82	57	-25	-30.5	98.8	95.0	-3.8
Possession of Weapons	12	23	11	91.7	9	20	11	122.2	75.0	87.0	12.0
Public Order	81	117	36	44.4	38	33	-5	-13.2	46.9	28.2	-18.7
Miscellaneous Crimes against Society	31	33	2	6.5	13	7	-6	-46.2	41.9	21.2	-20.7

Corporate Services: Performance Summary
Essex Police Performance Summary

Basildon
Cumulative Year to November

Top Level	Offences				Outcomes				Solved Rates %		
Crime Type	2014	2015	# diff.	% diff.	2014	2015	# diff.	% diff.	2014	2015	% pt. diff.
Anti-Social Behaviour (incidents)	4729	4311	-418	-8.8	-	-	-	-	-	-	-
All Crime (excl. Action (NFIB) Fraud)	8010	9566	1556	19.4	2152	1696	-456	-21.2	26.9	17.7	-9.1
- State Based Crime	800	869	69	8.6	569	399	-170	-29.9	71.1	45.9	-25.2
- Victim Based Crime	7210	8697	1487	20.6	1583	1297	-286	-18.1	22.0	14.9	-7.0
Victim Based Crime	Offences				Outcomes				Solved Rates %		
Crime Type	2014	2015	# diff.	% diff.	2014	2015	# diff.	% diff.	2014	2015	% pt. diff.
Violence Against the Person	1723	2290	567	32.9	563	512	-51	-9.1	32.7	22.4	-10.3
- Homicide	0	4	4	-	0	3	3	-	-	75.0	-
- Violence with Injury	802	898	96	12.0	284	211	-73	-25.7	35.4	23.5	-11.9
- Violence without Injury	921	1388	467	50.7	279	298	19	6.8	30.3	21.5	-8.8
Sexual Offences	163	222	59	36.2	30	28	-2	-6.7	18.4	12.6	-5.8
- Rape	52	75	23	44.2	11	6	-5	-45.5	21.2	8.0	-13.2
- Rape - Under 16 yrs	15	24	9	60.0	4	5	1	25.0	26.7	20.8	-5.8
- Rape - Over 16 yrs	37	51	14	37.8	7	1	-6	-85.7	18.9	2.0	-17.0
- Other Sexual Offences	111	147	36	32.4	19	22	3	15.8	17.1	15.0	-2.2
Robbery	87	127	40	46.0	9	21	12	133.3	10.3	16.5	6.2
- Robbery of business property	7	10	3	42.9	2	6	4	200.0	28.6	60.0	31.4
- Robbery of Personal Property	80	117	37	46.3	7	15	8	114.3	8.8	12.8	4.1
Theft Offences	4133	4594	461	11.2	818	604	-214	-26.2	19.8	13.1	-6.6
- Burglary	1151	1275	124	10.8	188	70	-118	-62.8	16.3	5.5	-10.8
- Dwelling Burglary	652	755	103	15.8	168	48	-120	-71.4	25.8	6.4	-19.4
- Other Burglary	499	520	21	4.2	20	22	2	10.0	4.0	4.2	0.2
- Vehicle Offences (incl. Interference)	1097	1515	418	38.1	58	42	-16	-27.6	5.3	2.8	-2.5
- Theft from Vehicle	740	968	228	30.8	30	13	-17	-56.7	4.1	1.3	-2.7
- Theft of Motor Vehicle	242	358	116	47.9	26	24	-2	-7.7	10.7	6.7	-4.0
- Vehicle Interference	115	189	74	64.3	2	5	3	150.0	1.7	2.6	0.9
- Theft	1885	1804	-81	-4.3	572	492	-80	-14.0	30.3	27.3	-3.1
- Theft from the Person	108	129	21	19.4	5	4	-1	-20.0	4.6	3.1	-1.5
- Theft of Pedal Cycle	176	146	-30	-17.0	5	3	-2	-40.0	2.8	2.1	-0.8
- Shoplifting	673	735	62	9.2	453	416	-37	-8.2	67.3	56.6	-10.7
- Other Theft	928	794	-134	-14.4	109	69	-40	-36.7	11.7	8.7	-3.1
Criminal Damage inc. Arson	1104	1464	360	32.6	163	132	-31	-19.0	14.8	9.0	-5.7
- Criminal Damage	1072	1423	351	32.7	157	131	-26	-16.6	14.6	9.2	-5.4
- Arson	32	41	9	28.1	6	1	-5	-83.3	18.8	2.4	-16.3
Racial/Religiously Aggravated Offences	74	63	-11	-14.9	24	19	-5	-20.8	32.4	30.2	-2.3
State Based Crime	Offences				Outcomes				Solved Rates %		
Crime Type	2014	2015	# diff.	% diff.	2014	2015	# diff.	% diff.	2014	2015	% pt. diff.
Drug Offences	394	240	-154	-39.1	374	220	-154	-41.2	94.9	91.7	-3.3
- Trafficking of Drugs	68	57	-11	-16.2	56	46	-10	-17.9	82.4	80.7	-1.7
- Possession of Drugs	326	183	-143	-43.9	318	174	-144	-45.3	97.5	95.1	-2.5
Possession of Weapons	45	59	14	31.1	29	30	1	3.4	64.4	50.8	-13.6
Public Order	282	438	156	55.3	121	112	-9	-7.4	42.9	25.6	-17.3
Miscellaneous Crimes against Society	79	132	53	67.1	45	37	-8	-17.8	57.0	28.0	-28.9

Corporate Services: Performance Summary
Essex Police Performance Summary

Basildon

Rolling 12 Months to November

Top Level	Offences				Outcomes				Solved Rates %		
Crime Type	2014	2015	# diff.	% diff.	2014	2015	# diff.	% diff.	2014	2015	% pt. diff.
Anti-Social Behaviour (incidents)	6228	6048	-180	-2.9	-	-	-	-	-	-	-
All Crime (excl. Action (NFIB) Fraud)	12216	13706	1490	12.2	3352	2762	-590	-17.6	27.4	20.2	-7.3
- State Based Crime	1220	1255	35	2.9	920	676	-244	-26.5	75.4	53.9	-21.5
- Victim Based Crime	10996	12451	1455	13.2	2432	2086	-346	-14.2	22.1	16.8	-5.4
Victim Based Crime	Offences				Outcomes				Solved Rates %		
Crime Type	2014	2015	# diff.	% diff.	2014	2015	# diff.	% diff.	2014	2015	% pt. diff.
Violence Against the Person	2504	3137	633	25.3	842	789	-53	-6.3	33.6	25.2	-8.5
- Homicide	0	4	4	-	0	3	3	-	-	75.0	-
- Violence with Injury	1174	1300	126	10.7	422	345	-77	-18.2	35.9	26.5	-9.4
- Violence without Injury	1330	1833	503	37.8	420	441	21	5.0	31.6	24.1	-7.5
Sexual Offences	258	348	90	34.9	46	57	11	23.9	17.8	16.4	-1.5
- Rape	82	118	36	43.9	16	13	-3	-18.8	19.5	11.0	-8.5
- Rape - Under 16 yrs	23	41	18	78.3	5	8	3	60.0	21.7	19.5	-2.2
- Rape - Over 16 yrs	59	77	18	30.5	11	5	-6	-54.5	18.6	6.5	-12.2
- Other Sexual Offences	176	230	54	30.7	30	44	14	46.7	17.0	19.1	2.1
Robbery	139	184	45	32.4	12	35	23	191.7	8.6	19.0	10.4
- Robbery of business property	18	20	2	11.1	2	9	7	350.0	11.1	45.0	33.9
- Robbery of Personal Property	121	164	43	35.5	10	26	16	160.0	8.3	15.9	7.6
Theft Offences	6343	6772	429	6.8	1289	1001	-288	-22.3	20.3	14.8	-5.5
- Burglary	1767	1942	175	9.9	274	130	-144	-52.6	15.5	6.7	-8.8
- Dwelling Burglary	1087	1175	88	8.1	237	92	-145	-61.2	21.8	7.8	-14.0
- Other Burglary	680	767	87	12.8	37	38	1	2.7	5.4	5.0	-0.5
- Vehicle Offences (incl. Interference)	1722	2202	480	27.9	85	73	-12	-14.1	4.9	3.3	-1.6
- Theft from Vehicle	1197	1439	242	20.2	40	27	-13	-32.5	3.3	1.9	-1.5
- Theft of Motor Vehicle	378	475	97	25.7	43	38	-5	-11.6	11.4	8.0	-3.4
- Vehicle Interference	147	288	141	95.9	2	8	6	300.0	1.4	2.8	1.4
- Theft	2854	2628	-226	-7.9	930	798	-132	-14.2	32.6	30.4	-2.2
- Theft from the Person	180	197	17	9.4	8	5	-3	-37.5	4.4	2.5	-1.9
- Theft of Pedal Cycle	227	196	-31	-13.7	10	8	-2	-20.0	4.4	4.1	-0.3
- Shoplifting	1077	1066	-11	-1.0	748	651	-97	-13.0	69.5	61.1	-8.4
- Other Theft	1370	1169	-201	-14.7	164	134	-30	-18.3	12.0	11.5	-0.5
Criminal Damage inc. Arson	1752	2010	258	14.7	243	204	-39	-16.0	13.9	10.1	-3.7
- Criminal Damage	1698	1961	263	15.5	235	200	-35	-14.9	13.8	10.2	-3.6
- Arson	54	49	-5	-9.3	8	4	-4	-50.0	14.8	8.2	-6.7
Racial/Religiously Aggravated Offences	98	94	-4	-4.1	28	30	2	7.1	28.6	31.9	3.3
State Based Crime	Offences				Outcomes				Solved Rates %		
Crime Type	2014	2015	# diff.	% diff.	2014	2015	# diff.	% diff.	2014	2015	% pt. diff.
Drug Offences	624	405	-219	-35.1	606	379	-227	-37.5	97.1	93.6	-3.5
- Trafficking of Drugs	97	88	-9	-9.3	88	81	-7	-8.0	90.7	92.0	1.3
- Possession of Drugs	527	317	-210	-39.8	518	298	-220	-42.5	98.3	94.0	-4.3
Possession of Weapons	75	83	8	10.7	57	50	-7	-12.3	76.0	60.2	-15.8
Public Order	406	582	176	43.3	176	182	6	3.4	43.3	31.3	-12.1
Miscellaneous Crimes against Society	115	185	70	60.9	81	65	-16	-19.8	70.4	35.1	-35.3

Corporate Services: Performance Summary
Essex Police Performance Summary

Thurrock
Cumulative Year to November

Top Level	Offences				Outcomes				Solved Rates %		
Crime Type	2014	2015	# diff.	% diff.	2014	2015	# diff.	% diff.	2014	2015	% pt. diff.
Anti-Social Behaviour (incidents)	4132	3896	-236	-5.7	-	-	-	-	-	-	-
All Crime (excl. Action (NFIB) Fraud)	7327	8115	788	10.8	1769	1615	-154	-8.7	24.1	19.9	-4.2
- State Based Crime	595	760	165	27.7	365	350	-15	-4.1	61.3	46.1	-15.3
- Victim Based Crime	6732	7355	623	9.3	1404	1265	-139	-9.9	20.9	17.2	-3.7
Victim Based Crime	Offences				Outcomes				Solved Rates %		
Crime Type	2014	2015	# diff.	% diff.	2014	2015	# diff.	% diff.	2014	2015	% pt. diff.
Violence Against the Person	1590	1931	341	21.4	494	523	29	5.9	31.1	27.1	-4.0
- Homicide	0	0	0	-	0	0	0	-	-	-	-
- Violence with Injury	718	789	71	9.9	244	253	9	3.7	34.0	32.1	-1.9
- Violence without Injury	872	1142	270	31.0	250	270	20	8.0	28.7	23.6	-5.0
Sexual Offences	159	158	-1	-0.6	27	21	-6	-22.2	17.0	13.3	-3.7
- Rape	59	63	4	6.8	9	5	-4	-44.4	15.3	7.9	-7.3
- Rape - Under 16 yrs	20	25	5	25.0	6	4	-2	-33.3	30.0	16.0	-14.0
- Rape - Over 16 yrs	39	38	-1	-2.6	3	1	-2	-66.7	7.7	2.6	-5.1
- Other Sexual Offences	100	95	-5	-5.0	18	16	-2	-11.1	18.0	16.8	-1.2
Robbery	79	66	-13	-16.5	19	19	0	0.0	24.1	28.8	4.7
- Robbery of business property	16	9	-7	-43.8	4	5	1	25.0	25.0	55.6	30.6
- Robbery of Personal Property	63	57	-6	-9.5	15	14	-1	-6.7	23.8	24.6	0.8
Theft Offences	3959	4053	94	2.4	722	564	-158	-21.9	18.2	13.9	-4.3
- Burglary	923	846	-77	-8.3	116	60	-56	-48.3	12.6	7.1	-5.5
- Dwelling Burglary	542	424	-118	-21.8	85	45	-40	-47.1	15.7	10.6	-5.1
- Other Burglary	381	422	41	10.8	31	15	-16	-51.6	8.1	3.6	-4.6
- Vehicle Offences (incl. Interference)	1069	1141	72	6.7	84	29	-55	-65.5	7.9	2.5	-5.3
- Theft from Vehicle	649	692	43	6.6	30	6	-24	-80.0	4.6	0.9	-3.8
- Theft of Motor Vehicle	337	367	30	8.9	51	22	-29	-56.9	15.1	6.0	-9.1
- Vehicle Interference	83	82	-1	-1.2	3	1	-2	-66.7	3.6	1.2	-2.4
- Theft	1967	2066	99	5.0	522	475	-47	-9.0	26.5	23.0	-3.5
- Theft from the Person	79	110	31	39.2	1	4	3	300.0	1.3	3.6	2.4
- Theft of Pedal Cycle	176	208	32	18.2	9	4	-5	-55.6	5.1	1.9	-3.2
- Shoplifting	768	850	82	10.7	422	378	-44	-10.4	54.9	44.5	-10.5
- Other Theft	944	898	-46	-4.9	90	89	-1	-1.1	9.5	9.9	0.4
Criminal Damage inc. Arson	945	1147	202	21.4	142	138	-4	-2.8	15.0	12.0	-3.0
- Criminal Damage	915	1081	166	18.1	139	130	-9	-6.5	15.2	12.0	-3.2
- Arson	30	66	36	120.0	3	8	5	166.7	10.0	12.1	2.1
Racial/Religiously Aggravated Offences	97	96	-1	-1.0	28	9	-19	-67.9	28.9	9.4	-19.5
State Based Crime	Offences				Outcomes				Solved Rates %		
Crime Type	2014	2015	# diff.	% diff.	2014	2015	# diff.	% diff.	2014	2015	% pt. diff.
Drug Offences	190	201	11	5.8	177	163	-14	-7.9	93.2	81.1	-12.1
- Trafficking of Drugs	36	42	6	16.7	27	23	-4	-14.8	75.0	54.8	-20.2
- Possession of Drugs	154	159	5	3.2	150	140	-10	-6.7	97.4	88.1	-9.4
Possession of Weapons	49	62	13	26.5	34	40	6	17.6	69.4	64.5	-4.9
Public Order	275	388	113	41.1	112	101	-11	-9.8	40.7	26.0	-14.7
Miscellaneous Crimes against Society	81	109	28	34.6	42	46	4	9.5	51.9	42.2	-9.7

Corporate Services: Performance Summary
Essex Police Performance Summary

Thurrock
Rolling 12 Months to November

Top Level	Offences				Outcomes				Solved Rates %		
Crime Type	2014	2015	# diff.	% diff.	2014	2015	# diff.	% diff.	2014	2015	% pt. diff.
Anti-Social Behaviour (incidents)	5660	5633	-27	-0.5	-	-	-	-	-	-	-
All Crime (excl. Action (NFIB) Fraud)	11006	11739	733	6.7	2680	2463	-217	-8.1	24.4	21.0	-3.4
- State Based Crime	901	1043	142	15.8	590	523	-67	-11.4	65.5	50.1	-15.3
- Victim Based Crime	10105	10696	591	5.8	2090	1940	-150	-7.2	20.7	18.1	-2.5
Victim Based Crime	Offences				Outcomes				Solved Rates %		
Crime Type	2014	2015	# diff.	% diff.	2014	2015	# diff.	% diff.	2014	2015	% pt. diff.
Violence Against the Person	2307	2704	397	17.2	728	793	65	8.9	31.6	29.3	-2.2
- Homicide	2	0	-2	-100.0	2	0	-2	-100.0	100.0	-	-
- Violence with Injury	1039	1096	57	5.5	351	380	29	8.3	33.8	34.7	0.9
- Violence without Injury	1266	1608	342	27.0	375	413	38	10.1	29.6	25.7	-3.9
Sexual Offences	221	245	24	10.9	39	36	-3	-7.7	17.6	14.7	-3.0
- Rape	79	99	20	25.3	15	10	-5	-33.3	19.0	10.1	-8.9
- Rape - Under 16 yrs	26	43	17	65.4	11	7	-4	-36.4	42.3	16.3	-26.0
- Rape - Over 16 yrs	53	56	3	5.7	4	3	-1	-25.0	7.5	5.4	-2.2
- Other Sexual Offences	142	146	4	2.8	24	26	2	8.3	16.9	17.8	0.9
Robbery	127	98	-29	-22.8	29	25	-4	-13.8	22.8	25.5	2.7
- Robbery of business property	21	17	-4	-19.0	4	6	2	50.0	19.0	35.3	16.2
- Robbery of Personal Property	106	81	-25	-23.6	25	19	-6	-24.0	23.6	23.5	-0.1
Theft Offences	6009	6020	11	0.2	1078	878	-200	-18.6	17.9	14.6	-3.4
- Burglary	1465	1339	-126	-8.6	145	95	-50	-34.5	9.9	7.1	-2.8
- Dwelling Burglary	852	693	-159	-18.7	99	69	-30	-30.3	11.6	10.0	-1.7
- Other Burglary	613	646	33	5.4	46	26	-20	-43.5	7.5	4.0	-3.5
- Vehicle Offences (incl. Interference)	1657	1754	97	5.9	102	59	-43	-42.2	6.2	3.4	-2.8
- Theft from Vehicle	1061	1063	2	0.2	40	14	-26	-65.0	3.8	1.3	-2.5
- Theft of Motor Vehicle	490	527	37	7.6	59	38	-21	-35.6	12.0	7.2	-4.8
- Vehicle Interference	106	164	58	54.7	3	7	4	133.3	2.8	4.3	1.4
- Theft	2887	2927	40	1.4	831	724	-107	-12.9	28.8	24.7	-4.0
- Theft from the Person	118	152	34	28.8	2	4	2	100.0	1.7	2.6	0.9
- Theft of Pedal Cycle	236	267	31	13.1	12	7	-5	-41.7	5.1	2.6	-2.5
- Shoplifting	1174	1213	39	3.3	660	570	-90	-13.6	56.2	47.0	-9.2
- Other Theft	1359	1295	-64	-4.7	157	143	-14	-8.9	11.6	11.0	-0.5
Criminal Damage inc. Arson	1441	1629	188	13.0	216	208	-8	-3.7	15.0	12.8	-2.2
- Criminal Damage	1394	1547	153	11.0	210	198	-12	-5.7	15.1	12.8	-2.3
- Arson	47	82	35	74.5	6	10	4	66.7	12.8	12.2	-0.6
Racial/Religiously Aggravated Offences	142	153	11	7.7	37	19	-18	-48.6	26.1	12.4	-13.6
State Based Crime	Offences				Outcomes				Solved Rates %		
Crime Type	2014	2015	# diff.	% diff.	2014	2015	# diff.	% diff.	2014	2015	% pt. diff.
Drug Offences	304	300	-4	-1.3	279	259	-20	-7.2	91.8	86.3	-5.4
- Trafficking of Drugs	63	53	-10	-15.9	49	34	-15	-30.6	77.8	64.2	-13.6
- Possession of Drugs	241	247	6	2.5	230	225	-5	-2.2	95.4	91.1	-4.3
Possession of Weapons	70	82	12	17.1	54	54	0	0.0	77.1	65.9	-11.3
Public Order	387	515	128	33.1	172	150	-22	-12.8	44.4	29.1	-15.3
Miscellaneous Crimes against Society	140	146	6	4.3	85	60	-25	-29.4	60.7	41.1	-19.6

Corporate Services: Performance Summary
Essex Police Performance Summary

Epping
Cumulative Year to November

Top Level	Offences				Outcomes				Solved Rates %		
Crime Type	2014	2015	# diff.	% diff.	2014	2015	# diff.	% diff.	2014	2015	% pt. diff.
Anti-Social Behaviour (incidents)	2724	2576	-148	-5.4	-	-	-	-	-	-	-
All Crime (excl. Action (NFIB) Fraud)	4506	5136	630	14.0	846	726	-120	-14.2	18.8	14.1	-4.6
- State Based Crime	413	510	97	23.5	227	204	-23	-10.1	55.0	40.0	-15.0
- Victim Based Crime	4093	4626	533	13.0	619	522	-97	-15.7	15.1	11.3	-3.8
Victim Based Crime	Offences				Outcomes				Solved Rates %		
Crime Type	2014	2015	# diff.	% diff.	2014	2015	# diff.	% diff.	2014	2015	% pt. diff.
Violence Against the Person	919	1165	246	26.8	277	222	-55	-19.9	30.1	19.1	-11.1
- Homicide	0	0	0	-	0	0	0	-	-	-	-
- Violence with Injury	415	454	39	9.4	137	99	-38	-27.7	33.0	21.8	-11.2
- Violence without Injury	504	711	207	41.1	140	123	-17	-12.1	27.8	17.3	-10.5
Sexual Offences	88	89	1	1.1	11	10	-1	-9.1	12.5	11.2	-1.3
- Rape	39	27	-12	-30.8	2	5	3	150.0	5.1	18.5	13.4
- Rape - Under 16 yrs	13	11	-2	-15.4	1	0	-1	-100.0	7.7	0.0	-7.7
- Rape - Over 16 yrs	26	16	-10	-38.5	1	5	4	400.0	3.8	31.3	27.4
- Other Sexual Offences	49	62	13	26.5	9	5	-4	-44.4	18.4	8.1	-10.3
Robbery	61	49	-12	-19.7	13	5	-8	-61.5	21.3	10.2	-11.1
- Robbery of business property	1	3	2	200.0	0	1	1	-	0.0	33.3	33.3
- Robbery of Personal Property	60	46	-14	-23.3	13	4	-9	-69.2	21.7	8.7	-13.0
Theft Offences	2411	2763	352	14.6	237	214	-23	-9.7	9.8	7.7	-2.1
- Burglary	725	791	66	9.1	41	39	-2	-4.9	5.7	4.9	-0.7
- Dwelling Burglary	455	489	34	7.5	35	29	-6	-17.1	7.7	5.9	-1.8
- Other Burglary	270	302	32	11.9	6	10	4	66.7	2.2	3.3	1.1
- Vehicle Offences (incl. Interference)	655	889	234	35.7	16	88	72	450.0	2.4	9.9	7.5
- Theft from Vehicle	379	533	154	40.6	3	59	56	1866.7	0.8	11.1	10.3
- Theft of Motor Vehicle	219	272	53	24.2	8	24	16	200.0	3.7	8.8	5.2
- Vehicle Interference	57	84	27	47.4	5	5	0	0.0	8.8	6.0	-2.8
- Theft	1031	1083	52	5.0	180	87	-93	-51.7	17.5	8.0	-9.4
- Theft from the Person	60	41	-19	-31.7	1	0	-1	-100.0	1.7	0.0	-1.7
- Theft of Pedal Cycle	38	64	26	68.4	3	2	-1	-33.3	7.9	3.1	-4.8
- Shoplifting	317	312	-5	-1.6	104	68	-36	-34.6	32.8	21.8	-11.0
- Other Theft	616	666	50	8.1	72	17	-55	-76.4	11.7	2.6	-9.1
Criminal Damage inc. Arson	614	560	-54	-8.8	81	71	-10	-12.3	13.2	12.7	-0.5
- Criminal Damage	595	542	-53	-8.9	81	70	-11	-13.6	13.6	12.9	-0.7
- Arson	19	18	-1	-5.3	0	1	1	-	0.0	5.6	5.6
Racial/Religiously Aggravated Offences	47	51	4	8.5	16	10	-6	-37.5	34.0	19.6	-14.4
State Based Crime	Offences				Outcomes				Solved Rates %		
Crime Type	2014	2015	# diff.	% diff.	2014	2015	# diff.	% diff.	2014	2015	% pt. diff.
Drug Offences	99	132	33	33.3	81	119	38	46.9	81.8	90.2	8.3
- Trafficking of Drugs	13	22	9	69.2	8	12	4	50.0	61.5	54.5	-7.0
- Possession of Drugs	86	110	24	27.9	73	107	34	46.6	84.9	97.3	12.4
Possession of Weapons	23	25	2	8.7	14	18	4	28.6	60.9	72.0	11.1
Public Order	228	270	42	18.4	107	45	-62	-57.9	46.9	16.7	-30.3
Miscellaneous Crimes against Society	63	83	20	31.7	25	22	-3	-12.0	39.7	26.5	-13.2

Corporate Services: Performance Summary
Essex Police Performance Summary

Epping

Rolling 12 Months to November

Top Level	Offences				Outcomes				Solved Rates %		
Crime Type	2014	2015	# diff.	% diff.	2014	2015	# diff.	% diff.	2014	2015	% pt. diff.
Anti-Social Behaviour (incidents)	3557	3596	39	1.1	-	-	-	-	-	-	-
All Crime (excl. Action (NFIB) Fraud)	6638	7315	677	10.2	1306	1121	-185	-14.2	19.7	15.3	-4.3
- State Based Crime	604	692	88	14.6	375	307	-68	-18.1	62.1	44.4	-17.7
- Victim Based Crime	6034	6623	589	9.8	931	814	-117	-12.6	15.4	12.3	-3.1
Victim Based Crime	Offences				Outcomes				Solved Rates %		
Crime Type	2014	2015	# diff.	% diff.	2014	2015	# diff.	% diff.	2014	2015	% pt. diff.
Violence Against the Person	1336	1623	287	21.5	421	350	-71	-16.9	31.5	21.6	-9.9
- Homicide	0	0	0	-	0	0	0	-	-	-	-
- Violence with Injury	598	634	36	6.0	201	155	-46	-22.9	33.6	24.4	-9.2
- Violence without Injury	738	989	251	34.0	220	195	-25	-11.4	29.8	19.7	-10.1
Sexual Offences	111	130	19	17.1	12	19	7	58.3	10.8	14.6	3.8
- Rape	43	42	-1	-2.3	2	8	6	300.0	4.7	19.0	14.4
- Rape - Under 16 yrs	13	13	0	0.0	1	0	-1	-100.0	7.7	0.0	-7.7
- Rape - Over 16 yrs	30	29	-1	-3.3	1	8	7	700.0	3.3	27.6	24.3
- Other Sexual Offences	68	88	20	29.4	10	11	1	10.0	14.7	12.5	-2.2
Robbery	84	77	-7	-8.3	16	12	-4	-25.0	19.0	15.6	-3.5
- Robbery of business property	1	5	4	400.0	0	1	1	-	0.0	20.0	20.0
- Robbery of Personal Property	83	72	-11	-13.3	16	11	-5	-31.3	19.3	15.3	-4.0
Theft Offences	3624	3956	332	9.2	361	330	-31	-8.6	10.0	8.3	-1.6
- Burglary	1067	1160	93	8.7	59	78	19	32.2	5.5	6.7	1.2
- Dwelling Burglary	663	765	102	15.4	47	67	20	42.6	7.1	8.8	1.7
- Other Burglary	404	395	-9	-2.2	12	11	-1	-8.3	3.0	2.8	-0.2
- Vehicle Offences (incl. Interference)	1026	1276	250	24.4	28	98	70	250.0	2.7	7.7	5.0
- Theft from Vehicle	616	755	139	22.6	4	62	58	1450.0	0.6	8.2	7.6
- Theft of Motor Vehicle	321	400	79	24.6	19	30	11	57.9	5.9	7.5	1.6
- Vehicle Interference	89	121	32	36.0	5	6	1	20.0	5.6	5.0	-0.7
- Theft	1531	1520	-11	-0.7	274	154	-120	-43.8	17.9	10.1	-7.8
- Theft from the Person	88	62	-26	-29.5	2	0	-2	-100.0	2.3	0.0	-2.3
- Theft of Pedal Cycle	54	76	22	40.7	3	2	-1	-33.3	5.6	2.6	-2.9
- Shoplifting	448	455	7	1.6	150	105	-45	-30.0	33.5	23.1	-10.4
- Other Theft	941	927	-14	-1.5	119	47	-72	-60.5	12.6	5.1	-7.6
Criminal Damage inc. Arson	879	837	-42	-4.8	121	103	-18	-14.9	13.8	12.3	-1.5
- Criminal Damage	857	810	-47	-5.5	121	102	-19	-15.7	14.1	12.6	-1.5
- Arson	22	27	5	22.7	0	1	1	-	0.0	3.7	3.7
Racial/Religiously Aggravated Offences	66	81	15	22.7	19	14	-5	-26.3	28.8	17.3	-11.5
State Based Crime	Offences				Outcomes				Solved Rates %		
Crime Type	2014	2015	# diff.	% diff.	2014	2015	# diff.	% diff.	2014	2015	% pt. diff.
Drug Offences	155	189	34	21.9	142	171	29	20.4	91.6	90.5	-1.1
- Trafficking of Drugs	19	29	10	52.6	14	15	1	7.1	73.7	51.7	-22.0
- Possession of Drugs	136	160	24	17.6	128	156	28	21.9	94.1	97.5	3.4
Possession of Weapons	34	40	6	17.6	24	28	4	16.7	70.6	70.0	-0.6
Public Order	327	351	24	7.3	167	73	-94	-56.3	51.1	20.8	-30.3
Miscellaneous Crimes against Society	88	112	24	27.3	42	35	-7	-16.7	47.7	31.3	-16.5

Corporate Services: Performance Summary
Essex Police Performance Summary

Harlow

Cumulative Year to November

Top Level	Offences				Outcomes				Solved Rates %		
Crime Type	2014	2015	# diff.	% diff.	2014	2015	# diff.	% diff.	2014	2015	% pt. diff.
Anti-Social Behaviour (incidents)	3038	2626	-412	-13.6	-	-	-	-	-	-	-
All Crime (excl. Action (NFIB) Fraud)	4434	4862	428	9.7	1430	1195	-235	-16.4	32.3	24.6	-7.7
- State Based Crime	529	476	-53	-10.0	384	259	-125	-32.6	72.6	54.4	-18.2
- Victim Based Crime	3905	4386	481	12.3	1046	936	-110	-10.5	26.8	21.3	-5.4
Victim Based Crime	Offences				Outcomes				Solved Rates %		
Crime Type	2014	2015	# diff.	% diff.	2014	2015	# diff.	% diff.	2014	2015	% pt. diff.
Violence Against the Person	983	1257	274	27.9	378	352	-26	-6.9	38.5	28.0	-10.5
- Homicide	0	2	2	-	0	0	0	-	-	0.0	-
- Violence with Injury	442	490	48	10.9	163	159	-4	-2.5	36.9	32.4	-4.4
- Violence without Injury	541	765	224	41.4	215	193	-22	-10.2	39.7	25.2	-14.5
Sexual Offences	86	137	51	59.3	11	20	9	81.8	12.8	14.6	1.8
- Rape	31	35	4	12.9	4	4	0	0.0	12.9	11.4	-1.5
- Rape - Under 16 yrs	9	7	-2	-22.2	1	1	0	0.0	11.1	14.3	3.2
- Rape - Over 16 yrs	22	28	6	27.3	3	3	0	0.0	13.6	10.7	-2.9
- Other Sexual Offences	55	102	47	85.5	7	16	9	128.6	12.7	15.7	3.0
Robbery	70	42	-28	-40.0	9	10	1	11.1	12.9	23.8	11.0
- Robbery of business property	4	2	-2	-50.0	0	1	1	-	0.0	50.0	50.0
- Robbery of Personal Property	66	40	-26	-39.4	9	9	0	0.0	13.6	22.5	8.9
Theft Offences	2179	2362	183	8.4	540	483	-57	-10.6	24.8	20.4	-4.3
- Burglary	447	440	-7	-1.6	47	18	-29	-61.7	10.5	4.1	-6.4
- Dwelling Burglary	239	200	-39	-16.3	37	11	-26	-70.3	15.5	5.5	-10.0
- Other Burglary	208	240	32	15.4	10	7	-3	-30.0	4.8	2.9	-1.9
- Vehicle Offences (incl. Interference)	379	633	254	67.0	27	114	87	322.2	7.1	18.0	10.9
- Theft from Vehicle	264	441	177	67.0	11	90	79	718.2	4.2	20.4	16.2
- Theft of Motor Vehicle	76	128	52	68.4	15	14	-1	-6.7	19.7	10.9	-8.8
- Vehicle Interference	39	64	25	64.1	1	10	9	900.0	2.6	15.6	13.1
- Theft	1353	1289	-64	-4.7	466	351	-115	-24.7	34.4	27.2	-7.2
- Theft from the Person	61	72	11	18.0	1	1	0	0.0	1.6	1.4	-0.3
- Theft of Pedal Cycle	73	101	28	38.4	3	1	-2	-66.7	4.1	1.0	-3.1
- Shoplifting	749	637	-112	-15.0	410	311	-99	-24.1	54.7	48.8	-5.9
- Other Theft	470	479	9	1.9	52	38	-14	-26.9	11.1	7.9	-3.1
Criminal Damage inc. Arson	587	588	1	0.2	108	71	-37	-34.3	18.4	12.1	-6.3
- Criminal Damage	564	565	1	0.2	104	71	-33	-31.7	18.4	12.6	-5.9
- Arson	23	23	0	0.0	4	0	-4	-100.0	17.4	0.0	-17.4
Racial/Religiously Aggravated Offences	58	34	-24	-41.4	19	18	-1	-5.3	32.8	52.9	20.2
State Based Crime	Offences				Outcomes				Solved Rates %		
Crime Type	2014	2015	# diff.	% diff.	2014	2015	# diff.	% diff.	2014	2015	% pt. diff.
Drug Offences	203	148	-55	-27.1	189	128	-61	-32.3	93.1	86.5	-6.6
- Trafficking of Drugs	51	33	-18	-35.3	50	22	-28	-56.0	98.0	66.7	-31.4
- Possession of Drugs	152	115	-37	-24.3	139	106	-33	-23.7	91.4	92.2	0.7
Possession of Weapons	26	33	7	26.9	23	26	3	13.0	88.5	78.8	-9.7
Public Order	253	236	-17	-6.7	144	86	-58	-40.3	56.9	36.4	-20.5
Miscellaneous Crimes against Society	47	59	12	25.5	28	19	-9	-32.1	59.6	32.2	-27.4

Corporate Services: Performance Summary
Essex Police Performance Summary

Harlow

Rolling 12 Months to November

Top Level	Offences				Outcomes				Solved Rates %		
Crime Type	2014	2015	# diff.	% diff.	2014	2015	# diff.	% diff.	2014	2015	% pt. diff.
Anti-Social Behaviour (incidents)	4063	3943	-120	-3.0	-	-	-	-	-	-	-
All Crime (excl. Action (NFIB) Fraud)	6579	7177	598	9.1	2230	1891	-339	-15.2	33.9	26.3	-7.5
- State Based Crime	785	681	-104	-13.2	594	409	-185	-31.1	75.7	60.1	-15.6
- Victim Based Crime	5794	6496	702	12.1	1636	1482	-154	-9.4	28.2	22.8	-5.4
Victim Based Crime	Offences				Outcomes				Solved Rates %		
Crime Type	2014	2015	# diff.	% diff.	2014	2015	# diff.	% diff.	2014	2015	% pt. diff.
Violence Against the Person	1433	1759	326	22.7	577	546	-31	-5.4	40.3	31.0	-9.2
- Homicide	0	2	2	-	0	0	0	-	-	0.0	-
- Violence with Injury	650	703	53	8.2	248	237	-11	-4.4	38.2	33.7	-4.4
- Violence without Injury	783	1054	271	34.6	329	309	-20	-6.1	42.0	29.3	-12.7
Sexual Offences	122	202	80	65.6	21	31	10	47.6	17.2	15.3	-1.9
- Rape	44	59	15	34.1	8	9	1	12.5	18.2	15.3	-2.9
- Rape - Under 16 yrs	14	17	3	21.4	4	2	-2	-50.0	28.6	11.8	-16.8
- Rape - Over 16 yrs	30	42	12	40.0	4	7	3	75.0	13.3	16.7	3.3
- Other Sexual Offences	78	143	65	83.3	13	22	9	69.2	16.7	15.4	-1.3
Robbery	95	73	-22	-23.2	13	17	4	30.8	13.7	23.3	9.6
- Robbery of business property	4	6	2	50.0	0	1	1	-	0.0	16.7	16.7
- Robbery of Personal Property	91	67	-24	-26.4	13	16	3	23.1	14.3	23.9	9.6
Theft Offences	3298	3569	271	8.2	841	767	-74	-8.8	25.5	21.5	-4.0
- Burglary	681	688	7	1.0	85	56	-29	-34.1	12.5	8.1	-4.3
- Dwelling Burglary	370	306	-64	-17.3	67	40	-27	-40.3	18.1	13.1	-5.0
- Other Burglary	311	382	71	22.8	18	16	-2	-11.1	5.8	4.2	-1.6
- Vehicle Offences (incl. Interference)	601	954	353	58.7	40	127	87	217.5	6.7	13.3	6.7
- Theft from Vehicle	437	651	214	49.0	18	94	76	422.2	4.1	14.4	10.3
- Theft of Motor Vehicle	116	214	98	84.5	21	23	2	9.5	18.1	10.7	-7.4
- Vehicle Interference	48	89	41	85.4	1	10	9	900.0	2.1	11.2	9.2
- Theft	2016	1927	-89	-4.4	716	584	-132	-18.4	35.5	30.3	-5.2
- Theft from the Person	99	97	-2	-2.0	4	1	-3	-75.0	4.0	1.0	-3.0
- Theft of Pedal Cycle	122	145	23	18.9	4	4	0	0.0	3.3	2.8	-0.5
- Shoplifting	1114	1004	-110	-9.9	628	513	-115	-18.3	56.4	51.1	-5.3
- Other Theft	681	681	0	0.0	80	66	-14	-17.5	11.7	9.7	-2.1
Criminal Damage inc. Arson	846	893	47	5.6	184	121	-63	-34.2	21.7	13.5	-8.2
- Criminal Damage	818	858	40	4.9	179	120	-59	-33.0	21.9	14.0	-7.9
- Arson	28	35	7	25.0	5	1	-4	-80.0	17.9	2.9	-15.0
Racial/Religiously Aggravated Offences	77	59	-18	-23.4	28	27	-1	-3.6	36.4	45.8	9.4
State Based Crime	Offences				Outcomes				Solved Rates %		
Crime Type	2014	2015	# diff.	% diff.	2014	2015	# diff.	% diff.	2014	2015	% pt. diff.
Drug Offences	340	220	-120	-35.3	319	213	-106	-33.2	93.8	96.8	3.0
- Trafficking of Drugs	129	38	-91	-70.5	122	32	-90	-73.8	94.6	84.2	-10.4
- Possession of Drugs	211	182	-29	-13.7	197	181	-16	-8.1	93.4	99.5	6.1
Possession of Weapons	35	51	16	45.7	32	42	10	31.3	91.4	82.4	-9.1
Public Order	341	317	-24	-7.0	203	122	-81	-39.9	59.5	38.5	-21.0
Miscellaneous Crimes against Society	69	93	24	34.8	40	32	-8	-20.0	58.0	34.4	-23.6

Corporate Services: Performance Summary
Essex Police Performance Summary

Brentwood
Cumulative Year to November

Top Level	Offences				Outcomes				Solved Rates %		
Crime Type	2014	2015	# diff.	% diff.	2014	2015	# diff.	% diff.	2014	2015	% pt. diff.
Anti-Social Behaviour (incidents)	1318	1425	107	8.1	-	-	-	-	-	-	-
All Crime (excl. Action (NFIB) Fraud)	2279	2554	275	12.1	516	370	-146	-28.3	22.6	14.5	-8.2
- State Based Crime	152	158	6	3.9	109	65	-44	-40.4	71.7	41.1	-30.6
- Victim Based Crime	2127	2396	269	12.6	407	305	-102	-25.1	19.1	12.7	-6.4
Victim Based Crime	Offences				Outcomes				Solved Rates %		
Crime Type	2014	2015	# diff.	% diff.	2014	2015	# diff.	% diff.	2014	2015	% pt. diff.
Violence Against the Person	425	485	60	14.1	148	108	-40	-27.0	34.8	22.3	-12.6
- Homicide	1	1	0	0.0	1	0	-1	-100.0	100.0	0.0	-100.0
- Violence with Injury	174	204	30	17.2	59	48	-11	-18.6	33.9	23.5	-10.4
- Violence without Injury	250	280	30	12.0	88	60	-28	-31.8	35.2	21.4	-13.8
Sexual Offences	38	49	11	28.9	13	1	-12	-92.3	34.2	2.0	-32.2
- Rape	9	13	4	44.4	3	1	-2	-66.7	33.3	7.7	-25.6
- Rape - Under 16 yrs	3	3	0	0.0	3	0	-3	-100.0	100.0	0.0	-100.0
- Rape - Over 16 yrs	6	10	4	66.7	0	1	1	-	0.0	10.0	10.0
- Other Sexual Offences	29	36	7	24.1	10	0	-10	-100.0	34.5	0.0	-34.5
Robbery	12	23	11	91.7	1	8	7	700.0	8.3	34.8	26.4
- Robbery of business property	1	3	2	200.0	0	2	2	-	0.0	66.7	66.7
- Robbery of Personal Property	11	20	9	81.8	1	6	5	500.0	9.1	30.0	20.9
Theft Offences	1383	1504	121	8.7	206	160	-46	-22.3	14.9	10.6	-4.3
- Burglary	411	407	-4	-1.0	71	58	-13	-18.3	17.3	14.3	-3.0
- Dwelling Burglary	273	260	-13	-4.8	66	47	-19	-28.8	24.2	18.1	-6.1
- Other Burglary	138	147	9	6.5	5	11	6	120.0	3.6	7.5	3.9
- Vehicle Offences (incl. Interference)	399	526	127	31.8	15	16	1	6.7	3.8	3.0	-0.7
- Theft from Vehicle	267	326	59	22.1	7	6	-1	-14.3	2.6	1.8	-0.8
- Theft of Motor Vehicle	100	142	42	42.0	8	5	-3	-37.5	8.0	3.5	-4.5
- Vehicle Interference	32	58	26	81.3	0	5	5	-	0.0	8.6	8.6
- Theft	573	571	-2	-0.3	120	86	-34	-28.3	20.9	15.1	-5.9
- Theft from the Person	17	47	30	176.5	2	0	-2	-100.0	11.8	0.0	-11.8
- Theft of Pedal Cycle	51	39	-12	-23.5	1	2	1	100.0	2.0	5.1	3.2
- Shoplifting	124	159	35	28.2	77	60	-17	-22.1	62.1	37.7	-24.4
- Other Theft	381	326	-55	-14.4	40	24	-16	-40.0	10.5	7.4	-3.1
Criminal Damage inc. Arson	269	335	66	24.5	39	28	-11	-28.2	14.5	8.4	-6.1
- Criminal Damage	261	323	62	23.8	39	28	-11	-28.2	14.9	8.7	-6.3
- Arson	8	12	4	50.0	0	0	0	-	0.0	0.0	0.0
Racial/Religiously Aggravated Offences	23	10	-13	-56.5	6	3	-3	-50.0	26.1	30.0	3.9
State Based Crime	Offences				Outcomes				Solved Rates %		
Crime Type	2014	2015	# diff.	% diff.	2014	2015	# diff.	% diff.	2014	2015	% pt. diff.
Drug Offences	51	26	-25	-49.0	54	27	-27	-50.0	105.9	103.8	-2.0
- Trafficking of Drugs	3	7	4	133.3	5	7	2	40.0	166.7	100.0	-66.7
- Possession of Drugs	48	19	-29	-60.4	49	20	-29	-59.2	102.1	105.3	3.2
Possession of Weapons	8	11	3	37.5	6	10	4	66.7	75.0	90.9	15.9
Public Order	72	91	19	26.4	37	19	-18	-48.6	51.4	20.9	-30.5
Miscellaneous Crimes against Society	21	30	9	42.9	12	9	-3	-25.0	57.1	30.0	-27.1

Corporate Services: Performance Summary
Essex Police Performance Summary

Brentwood
Rolling 12 Months to November

Top Level	Offences				Outcomes				Solved Rates %		
Crime Type	2014	2015	# diff.	% diff.	2014	2015	# diff.	% diff.	2014	2015	% pt. diff.
Anti-Social Behaviour (incidents)	1762	2044	282	16.0	-	-	-	-	-	-	-
All Crime (excl. Action (NFIB) Fraud)	3376	3763	387	11.5	793	599	-194	-24.5	23.5	15.9	-7.6
- State Based Crime	254	234	-20	-7.9	195	121	-74	-37.9	76.8	51.7	-25.1
- Victim Based Crime	3122	3529	407	13.0	598	478	-120	-20.1	19.2	13.5	-5.6
Victim Based Crime	Offences				Outcomes				Solved Rates %		
Crime Type	2014	2015	# diff.	% diff.	2014	2015	# diff.	% diff.	2014	2015	% pt. diff.
Violence Against the Person	624	729	105	16.8	224	182	-42	-18.8	35.9	25.0	-10.9
- Homicide	1	1	0	0.0	1	0	-1	-100.0	100.0	0.0	-100.0
- Violence with Injury	285	303	18	6.3	99	83	-16	-16.2	34.7	27.4	-7.3
- Violence without Injury	338	425	87	25.7	124	99	-25	-20.2	36.7	23.3	-13.4
Sexual Offences	50	69	19	38.0	18	2	-16	-88.9	36.0	2.9	-33.1
- Rape	12	16	4	33.3	4	1	-3	-75.0	33.3	6.3	-27.1
- Rape - Under 16 yrs	4	4	0	0.0	4	0	-4	-100.0	100.0	0.0	-100.0
- Rape - Over 16 yrs	8	12	4	50.0	0	1	1	-	0.0	8.3	8.3
- Other Sexual Offences	38	53	15	39.5	14	1	-13	-92.9	36.8	1.9	-35.0
Robbery	20	29	9	45.0	2	12	10	500.0	10.0	41.4	31.4
- Robbery of business property	1	5	4	400.0	0	3	3	-	0.0	60.0	60.0
- Robbery of Personal Property	19	24	5	26.3	2	9	7	350.0	10.5	37.5	27.0
Theft Offences	2057	2228	171	8.3	300	238	-62	-20.7	14.6	10.7	-3.9
- Burglary	614	635	21	3.4	78	77	-1	-1.3	12.7	12.1	-0.6
- Dwelling Burglary	414	429	15	3.6	71	59	-12	-16.9	17.1	13.8	-3.4
- Other Burglary	200	206	6	3.0	7	18	11	157.1	3.5	8.7	5.2
- Vehicle Offences (incl. Interference)	589	772	183	31.1	22	26	4	18.2	3.7	3.4	-0.4
- Theft from Vehicle	402	477	75	18.7	8	7	-1	-12.5	2.0	1.5	-0.5
- Theft of Motor Vehicle	151	211	60	39.7	14	14	0	0.0	9.3	6.6	-2.6
- Vehicle Interference	36	84	48	133.3	0	5	5	-	0.0	6.0	6.0
- Theft	854	821	-33	-3.9	200	135	-65	-32.5	23.4	16.4	-7.0
- Theft from the Person	34	62	28	82.4	2	0	-2	-100.0	5.9	0.0	-5.9
- Theft of Pedal Cycle	59	43	-16	-27.1	2	2	0	0.0	3.4	4.7	1.3
- Shoplifting	232	225	-7	-3.0	136	86	-50	-36.8	58.6	38.2	-20.4
- Other Theft	529	491	-38	-7.2	60	47	-13	-21.7	11.3	9.6	-1.8
Criminal Damage inc. Arson	371	474	103	27.8	54	44	-10	-18.5	14.6	9.3	-5.3
- Criminal Damage	363	460	97	26.7	54	43	-11	-20.4	14.9	9.3	-5.5
- Arson	8	14	6	75.0	0	1	1	-	0.0	7.1	7.1
Racial/Religiously Aggravated Offences	32	15	-17	-53.1	9	5	-4	-44.4	28.1	33.3	5.2
State Based Crime	Offences				Outcomes				Solved Rates %		
Crime Type	2014	2015	# diff.	% diff.	2014	2015	# diff.	% diff.	2014	2015	% pt. diff.
Drug Offences	103	60	-43	-41.7	102	58	-44	-43.1	99.0	96.7	-2.4
- Trafficking of Drugs	10	11	1	10.0	9	9	0	0.0	90.0	81.8	-8.2
- Possession of Drugs	93	49	-44	-47.3	93	49	-44	-47.3	100.0	100.0	0.0
Possession of Weapons	10	15	5	50.0	8	14	6	75.0	80.0	93.3	13.3
Public Order	108	118	10	9.3	64	36	-28	-43.8	59.3	30.5	-28.8
Miscellaneous Crimes against Society	33	41	8	24.2	21	13	-8	-38.1	63.6	31.7	-31.9