

Corporate Services

Essex Police Performance Summary to July 2016



Date: 10th August 2016

Unit: Performance Information Unit

Contact: Katie Roberts

Corporate Services: Performance Summary

Essex Police Performance Summary: To July 2016

1. Introduction

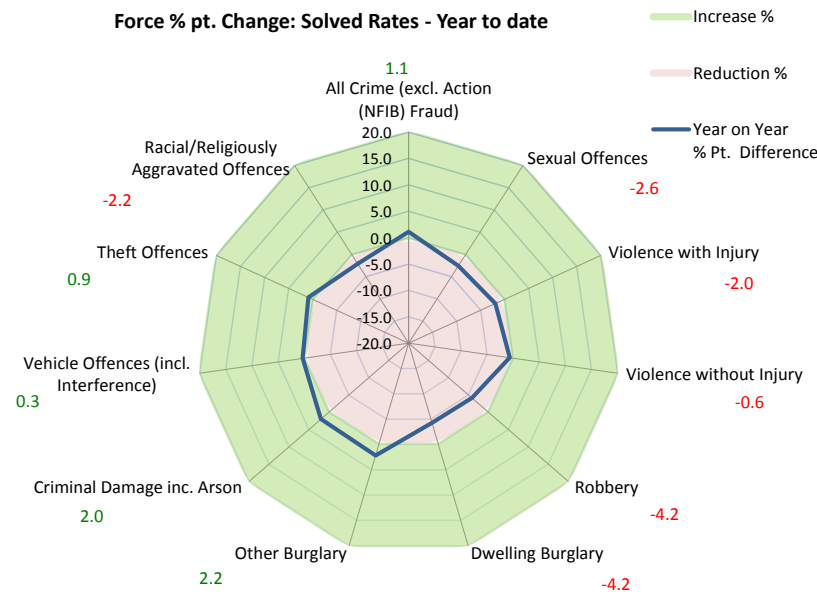
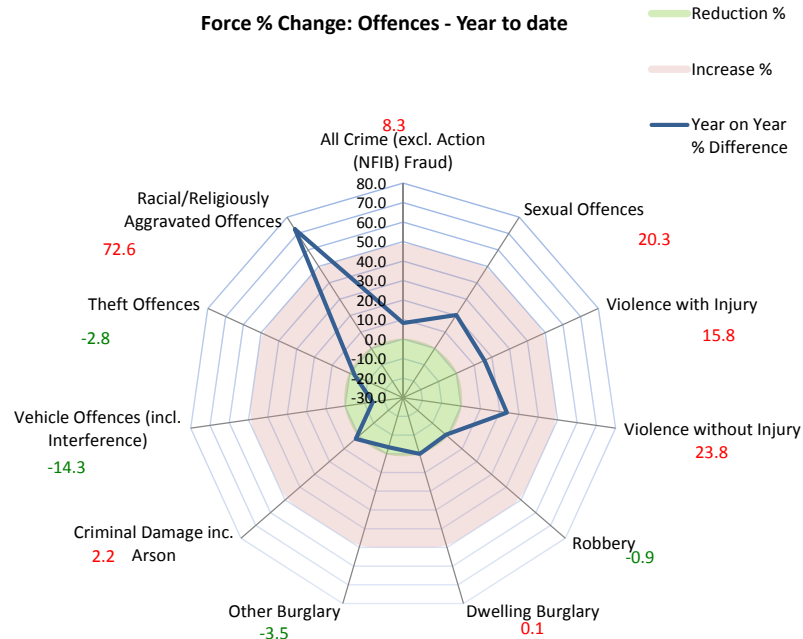
This performance summary is designed to pictorially represent how individual districts are performing within each crime type.

The report includes:

- Charts to show the cumulative (from April) percentage differences between the number of offences, and the percentage pt. differences between the solved rates, in each district, for the current period compared to the same period the previous year.
- Tables of data relating to both cumulative and rolling figures for this district.

Solved Rate: Essex Police could potentially still be under-extracting the number of crimes that have been solved.

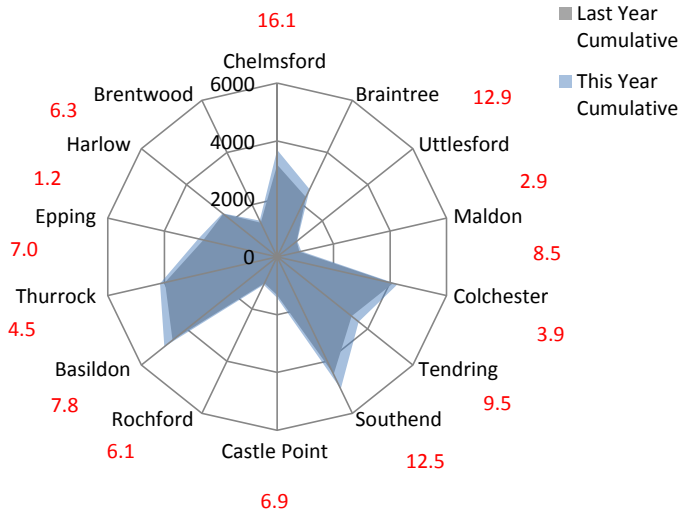
2. Current Position



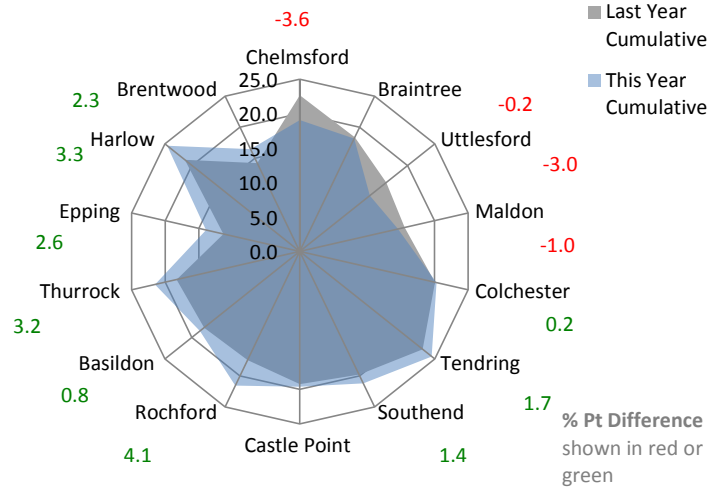
Corporate Services: Performance Summary

Essex Police Performance Summary: To July 2016

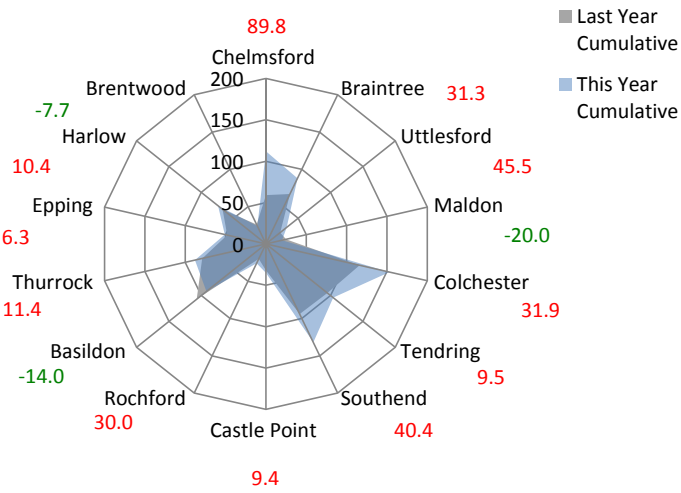
All Crime Offences - Year to date



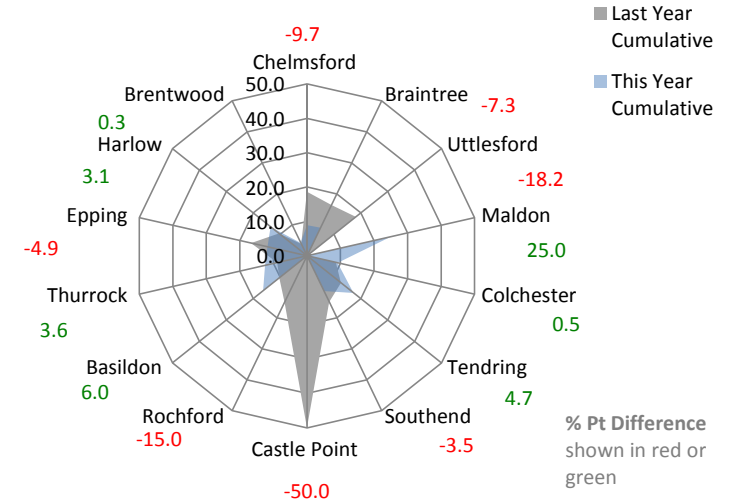
All Crime Solved Rate - Year to date



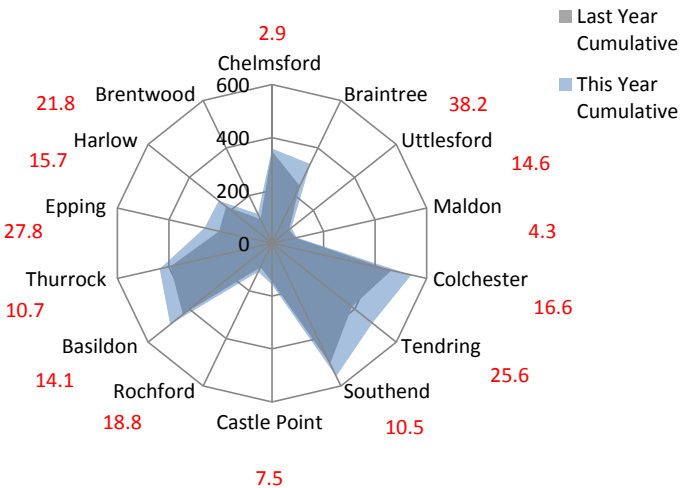
Sexual Offences - Year to date



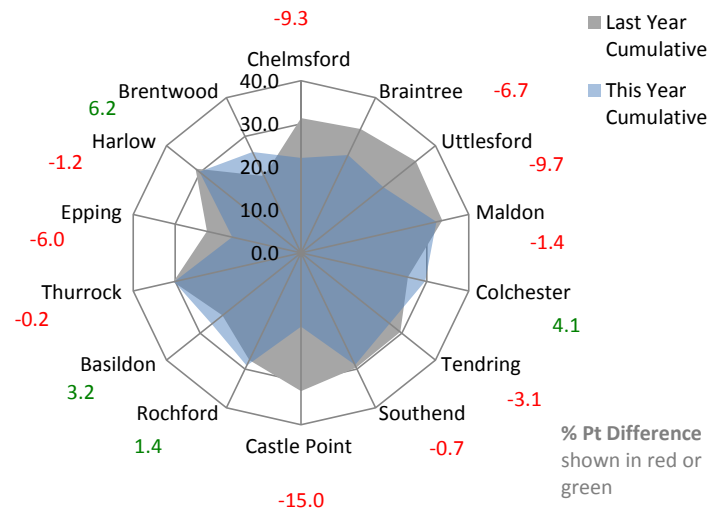
Sexual Offences Solved Rate - Year to date



Violence with Injury Offences - Year to date



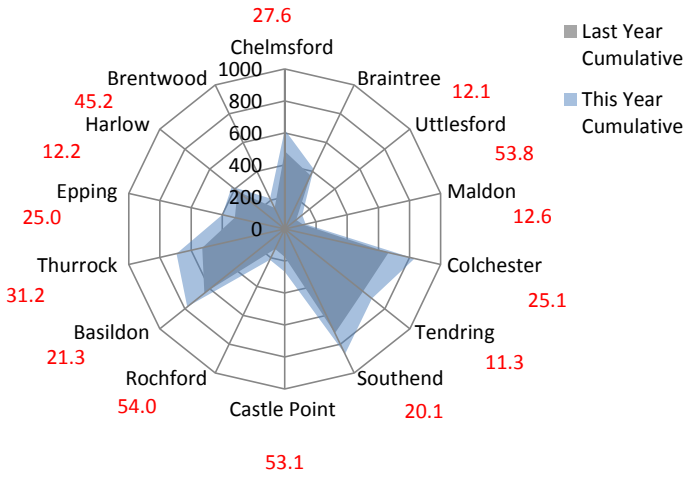
Violence with Injury Solved Rate - Year to date



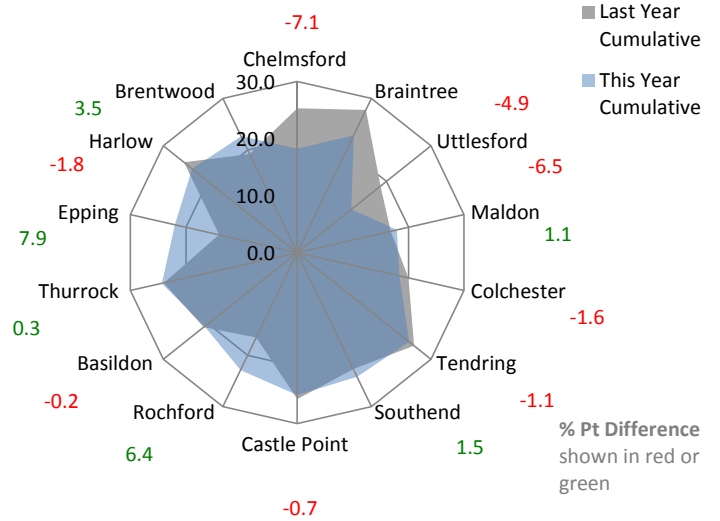
Corporate Services: Performance Summary

Essex Police Performance Summary: To July 2016

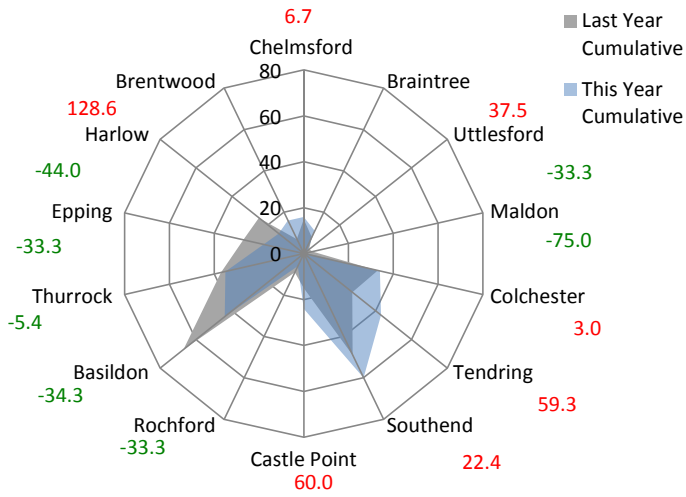
Violence without Injury Offences - Year to date



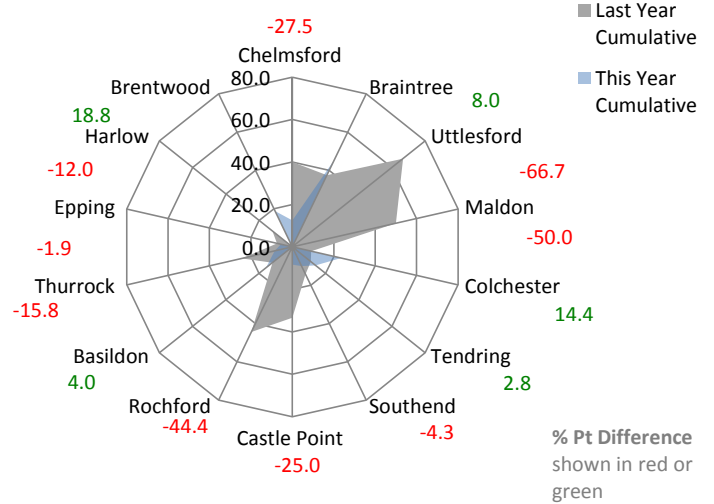
Violence without Injury Solved Rate - Year to date



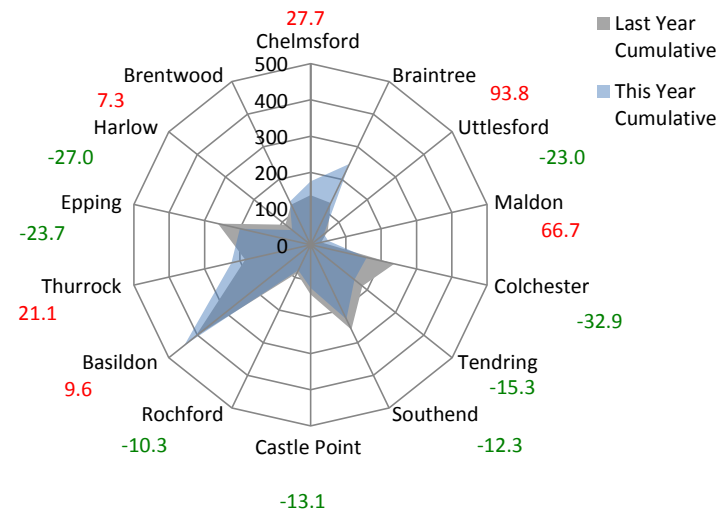
Robbery Offences - Year to date



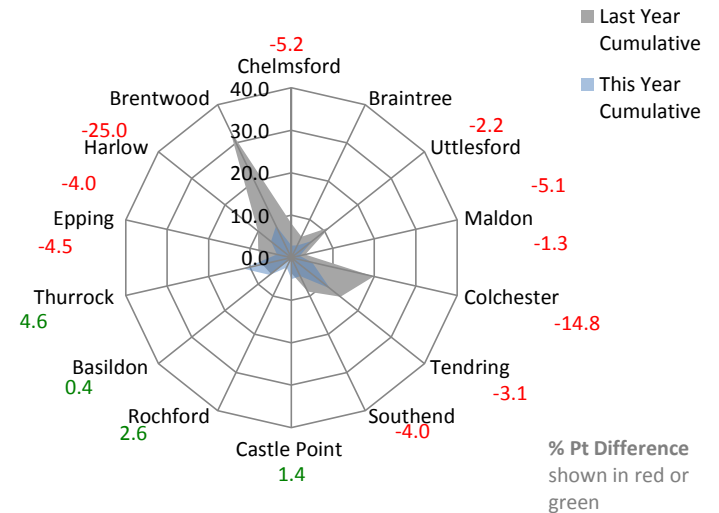
Robbery Solved Rate - Year to date



Dwelling Burglary Offences - Year to date



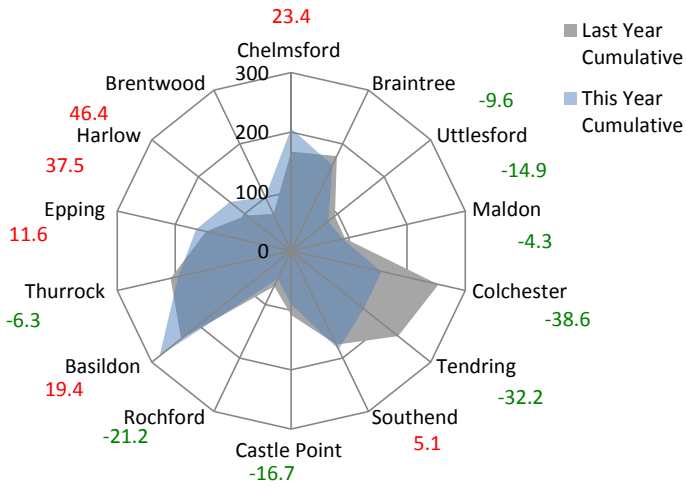
Dwelling Burglary Solved Rate - Year to date



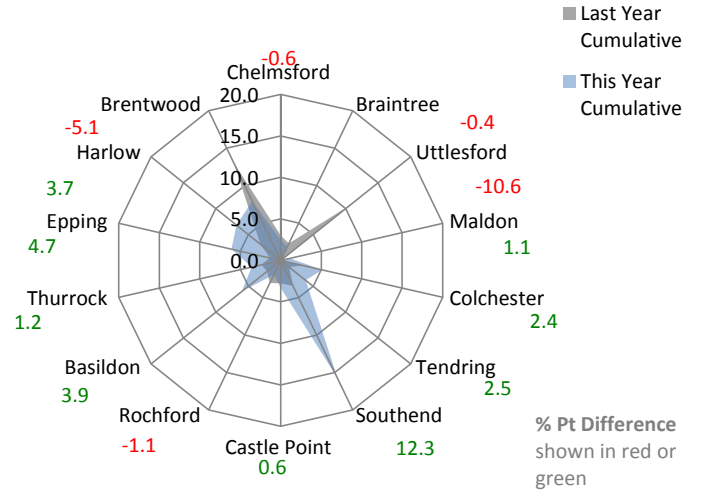
Corporate Services: Performance Summary

Essex Police Performance Summary: To July 2016

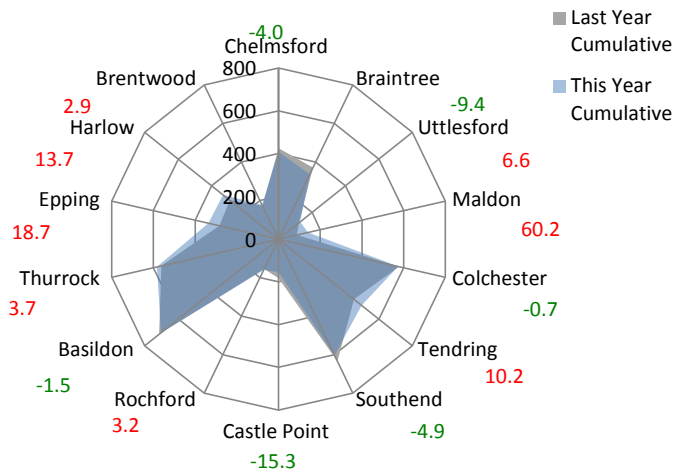
Other Burglary Offences - Year to date



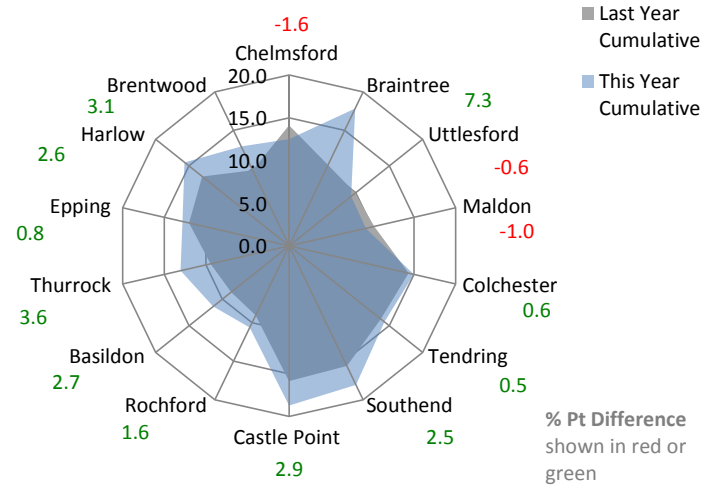
Other Burglary Solved Rate - Year to date



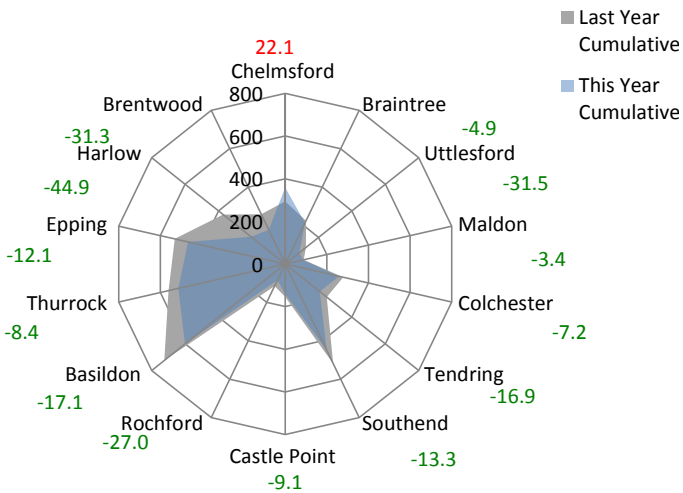
Criminal Damage Offences - Year to date



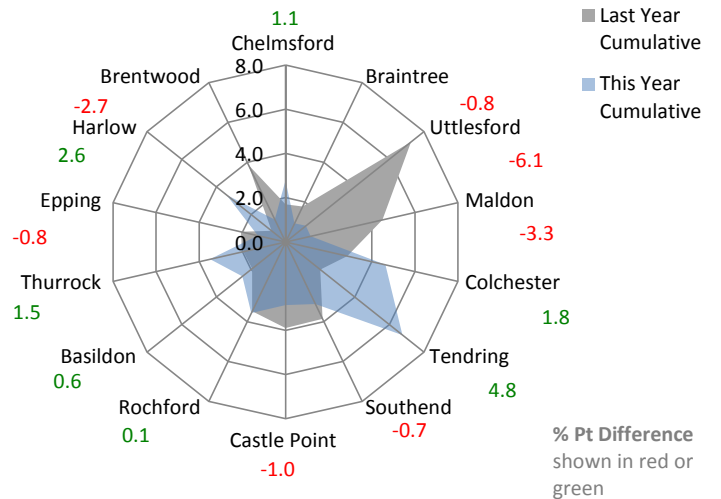
Criminal Damage Solved Rate - Year to date



Vehicle Offences - Year to date



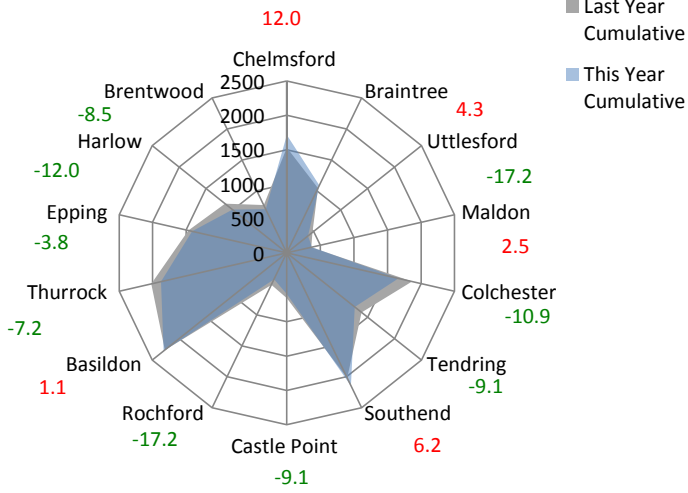
Vehicle Offences Solved Rate - Year to date



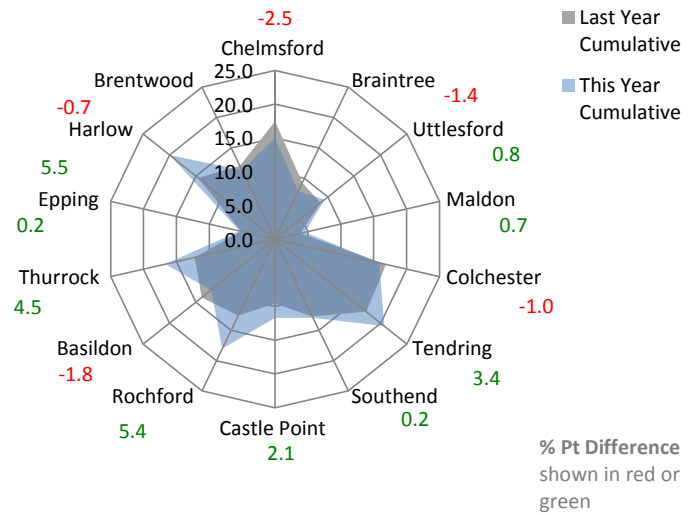
Corporate Services: Performance Summary

Essex Police Performance Summary: To July 2016

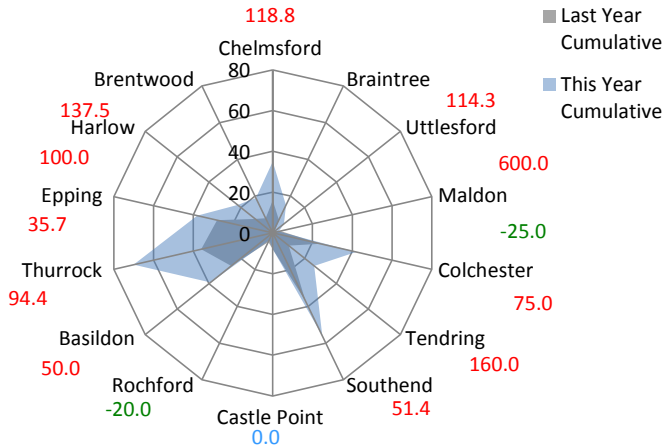
Theft Offences - Year to date



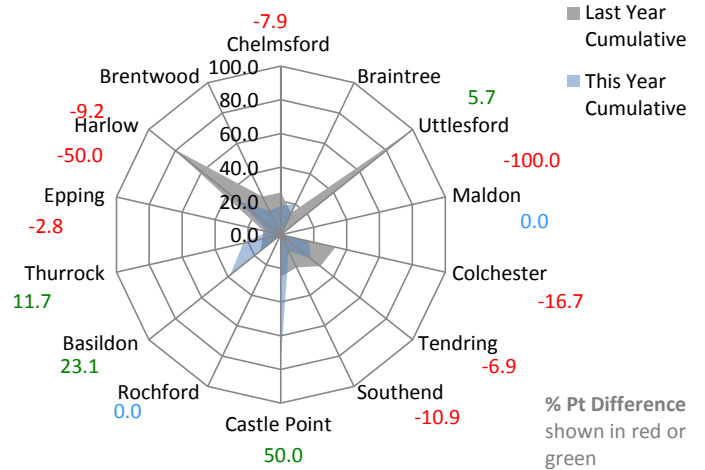
Theft Offences Solved Rate - Year to date



Racial / Religiously Aggravated Offences - Year to date % Difference



Racial/Religiously Aggravated Offences Solved Rate - Year to date



Corporate Services: Performance Summary
Essex Police Performance Summary

Force
Cumulative Year to July

Top Level	Offences				Outcomes				Solved Rates %		
Crime Type	2015	2016	# diff.	% diff.	2015	2016	# diff.	% diff.	2015	2016	% pt. diff.
Anti-Social Behaviour (incidents)	20093	18919	-1174	-5.8	-	-	-	-	-	-	-
All Crime (excl. Action (NFIB) Fraud)	36608	39650	3042	8.3	7016	8038	1022	14.6	19.2	20.3	1.1
- State Based Crime	3484	4865	1381	39.6	1620	2127	507	31.3	46.5	43.7	-2.8
- Victim Based Crime	33124	34785	1661	5.0	5396	5911	515	9.5	16.3	17.0	0.7
Victim Based Crime	Offences				Outcomes				Solved Rates %		
Crime Type	2015	2016	# diff.	% diff.	2015	2016	# diff.	% diff.	2015	2016	% pt. diff.
Violence Against the Person	9163	11036	1873	20.4	2306	2635	329	14.3	25.2	23.9	-1.3
- Homicide	12	8	-4	-33.3	10	5	-5	-50.0	83.3	62.5	-20.8
- Violence with Injury	3726	4314	588	15.8	1062	1145	83	7.8	28.5	26.5	-2.0
- Violence without Injury	5425	6714	1289	23.8	1234	1485	251	20.3	22.7	22.1	-0.6
Sexual Offences	860	1035	175	20.3	117	114	-3	-2.6	13.6	11.0	-2.6
- Rape	324	376	52	16.0	39	24	-15	-38.5	12.0	6.4	-5.7
- Rape - Under 16 yrs	131	124	-7	-5.3	17	17	0	0.0	13.0	13.7	0.7
- Rape - Over 16 yrs	193	252	59	30.6	22	7	-15	-68.2	11.4	2.8	-8.6
- Other Sexual Offences	536	659	123	22.9	78	90	12	15.4	14.6	13.7	-0.9
Robbery	327	324	-3	-0.9	57	43	-14	-24.6	17.4	13.3	-4.2
- Robbery of business property	0	35	35	#DIV/0!	5	16	11	220.0	#DIV/0!	45.7	-
- Robbery of Personal Property	327	289	-38	-11.6	52	27	-25	-48.1	15.9	9.3	-6.6
Theft Offences	17739	17246	-493	-2.8	2305	2393	88	3.8	13.0	13.9	0.9
- Burglary	4448	4376	-72	-1.6	301	246	-55	-18.3	6.8	5.6	-1.1
- Dwelling Burglary	2326	2328	2	0.1	237	139	-98	-41.4	10.2	6.0	-4.2
- Other Burglary	2122	2048	-74	-3.5	64	107	43	67.2	3.0	5.2	2.2
- Vehicle Offences (incl. Interference)	4508	3863	-645	-14.3	114	110	-4	-3.5	2.5	2.8	0.3
- Theft from Vehicle	2913	2306	-607	-20.8	43	32	-11	-25.6	1.5	1.4	-0.1
- Theft of Motor Vehicle	1134	1193	59	5.2	65	71	6	9.2	5.7	6.0	0.2
- Vehicle Interference	461	364	-97	-21.0	6	7	1	16.7	1.3	1.9	0.6
- Theft	8783	9007	224	2.6	1890	2037	147	7.8	21.5	22.6	1.1
- Theft from the Person	492	525	33	6.7	18	24	6	33.3	3.7	4.6	0.9
- Theft of Pedal Cycle	804	677	-127	-15.8	37	30	-7	-18.9	4.6	4.4	-0.2
- Shoplifting	3230	3478	248	7.7	1543	1622	79	5.1	47.8	46.6	-1.1
- Other Theft	4257	4327	70	1.6	292	361	69	23.6	6.9	8.3	1.5
Criminal Damage inc. Arson	5035	5144	109	2.2	611	726	115	18.8	12.1	14.1	2.0
- Criminal Damage	4854	4982	128	2.6	599	710	111	18.5	12.3	14.3	1.9
- Arson	181	162	-19	-10.5	12	16	4	33.3	6.6	9.9	3.2
Racial/Religiously Aggravated Offences	223	385	162	72.6	50	78	28	56.0	22.4	20.3	-2.2
State Based Crime	Offences				Outcomes				Solved Rates %		
Crime Type	2015	2016	# diff.	% diff.	2015	2016	# diff.	% diff.	2015	2016	% pt. diff.
Drug Offences	929	1025	96	10.3	802	892	90	11.2	86.3	87.0	0.7
- Trafficking of Drugs	224	218	-6	-2.7	155	153	-2	-1.3	69.2	70.2	1.0
- Possession of Drugs	705	807	102	14.5	647	739	92	14.2	91.8	91.6	-0.2
Possession of Weapons	326	408	82	25.2	198	319	121	61.1	60.7	78.2	17.5
Public Order	1695	2719	1024	60.4	463	699	236	51.0	27.3	25.7	-1.6
Miscellaneous Crimes against Society	534	713	179	33.5	157	217	60	38.2	29.4	30.4	1.0

Corporate Services: Performance Summary
Essex Police Performance Summary

Force

Rolling 12 Months to July

Top Level	Offences				Outcomes				Solved Rates %		
Crime Type	2015	2016	# diff.	% diff.	2015	2016	# diff.	% diff.	2015	2016	% pt. diff.
Anti-Social Behaviour (incidents)	55945	51542	-4403	-7.9	-	-	-	-	-	-	-
All Crime (excl. Action (NFIB) Fraud)	102391	113925	11534	11.3	24777	24629	-148	-0.6	24.2	21.6	-2.6
- State Based Crime	9796	12598	2802	28.6	6110	6114	4	0.1	62.4	48.5	-13.8
- Victim Based Crime	92595	101327	8732	9.4	18667	18515	-152	-0.8	20.2	18.3	-1.9
Victim Based Crime	Offences				Outcomes				Solved Rates %		
Crime Type	2015	2016	# diff.	% diff.	2015	2016	# diff.	% diff.	2015	2016	% pt. diff.
Violence Against the Person	24336	31325	6989	28.7	7772	8051	279	3.6	31.9	25.7	-6.2
- Homicide	18	28	10	55.6	14	15	1	7.1	77.8	53.6	-24.2
- Violence with Injury	10467	12194	1727	16.5	3643	3578	-65	-1.8	34.8	29.3	-5.5
- Violence without Injury	13851	19103	5252	37.9	4115	4458	343	8.3	29.7	23.3	-6.4
Sexual Offences	2557	2973	416	16.3	412	426	14	3.4	16.1	14.3	-1.8
- Rape	934	1048	114	12.2	124	98	-26	-21.0	13.3	9.4	-3.9
- Rape - Under 16 yrs	333	329	-4	-1.2	56	58	2	3.6	16.8	17.6	0.8
- Rape - Over 16 yrs	601	719	118	19.6	68	40	-28	-41.2	11.3	5.6	-5.8
- Other Sexual Offences	1623	1925	302	18.6	288	328	40	13.9	17.7	17.0	-0.7
Robbery	956	1004	48	5.0	193	181	-12	-6.2	20.2	18.0	-2.2
- Robbery of business property	72	113	41	56.9	19	50	31	163.2	26.4	44.2	17.9
- Robbery of Personal Property	884	891	7	0.8	174	131	-43	-24.7	19.7	14.7	-5.0
Theft Offences	50779	50828	49	0.1	8303	7699	-604	-7.3	16.4	15.1	-1.2
- Burglary	13260	12968	-292	-2.2	1215	815	-400	-32.9	9.2	6.3	-2.9
- Dwelling Burglary	7013	6791	-222	-3.2	916	512	-404	-44.1	13.1	7.5	-5.5
- Other Burglary	6247	6177	-70	-1.1	299	303	4	1.3	4.8	4.9	0.1
- Vehicle Offences (incl. Interference)	12565	11815	-750	-6.0	555	619	64	11.5	4.4	5.2	0.8
- Theft from Vehicle	8142	7251	-891	-10.9	218	281	63	28.9	2.7	3.9	1.2
- Theft of Motor Vehicle	3112	3382	270	8.7	303	289	-14	-4.6	9.7	8.5	-1.2
- Vehicle Interference	1311	1182	-129	-9.8	34	49	15	44.1	2.6	4.1	1.6
- Theft	24954	26045	1091	4.4	6533	6265	-268	-4.1	26.2	24.1	-2.1
- Theft from the Person	1361	1764	403	29.6	37	64	27	73.0	2.7	3.6	0.9
- Theft of Pedal Cycle	2222	2077	-145	-6.5	121	94	-27	-22.3	5.4	4.5	-0.9
- Shoplifting	9243	10214	971	10.5	5037	4948	-89	-1.8	54.5	48.4	-6.1
- Other Theft	12128	11990	-138	-1.1	1338	1159	-179	-13.4	11.0	9.7	-1.4
Criminal Damage inc. Arson	13967	15197	1230	8.8	1987	2158	171	8.6	14.2	14.2	0.0
- Criminal Damage	13507	14728	1221	9.0	1932	2120	188	9.7	14.3	14.4	0.1
- Arson	460	469	9	2.0	55	38	-17	-30.9	12.0	8.1	-3.9
Racial/Religiously Aggravated Offences	806	900	94	11.7	259	228	-31	-12.0	32.1	25.3	-6.8
State Based Crime	Offences				Outcomes				Solved Rates %		
Crime Type	2015	2016	# diff.	% diff.	2015	2016	# diff.	% diff.	2015	2016	% pt. diff.
Drug Offences	3303	2835	-468	-14.2	3124	2581	-543	-17.4	94.6	91.0	-3.5
- Trafficking of Drugs	637	581	-56	-8.8	520	443	-77	-14.8	81.6	76.2	-5.4
- Possession of Drugs	2666	2254	-412	-15.5	2604	2138	-466	-17.9	97.7	94.9	-2.8
Possession of Weapons	922	1116	194	21.0	716	882	166	23.2	77.7	79.0	1.4
Public Order	4185	6820	2635	63.0	1659	1996	337	20.3	39.6	29.3	-10.4
Miscellaneous Crimes against Society	1386	1827	441	31.8	611	655	44	7.2	44.1	35.9	-8.2

Corporate Services: Performance Summary
Essex Police Performance Summary

Chelmsford
Cumulative Year to July

Top Level	Offences				Outcomes				Solved Rates %		
Crime Type	2015	2016	# diff.	% diff.	2015	2016	# diff.	% diff.	2015	2016	% pt. diff.
Anti-Social Behaviour (incidents)	1594	1491	-103	-6.5	-	-	-	-	-	-	-
All Crime (excl. Action (NFIB) Fraud)	3183	3695	512	16.1	721	704	-17	-2.4	22.7	19.1	-3.6
- State Based Crime	319	463	144	45.1	144	190	46	31.9	45.1	41.0	-4.1
- Victim Based Crime	2864	3232	368	12.8	577	514	-63	-10.9	20.1	15.9	-4.2
Victim Based Crime	Offences				Outcomes				Solved Rates %		
Crime Type	2015	2016	# diff.	% diff.	2015	2016	# diff.	% diff.	2015	2016	% pt. diff.
Violence Against the Person	835	982	147	17.6	233	194	-39	-16.7	27.9	19.8	-8.1
- Homicide	1	4	3	300.0	1	2	1	100.0	100.0	50.0	-50.0
- Violence with Injury	348	358	10	2.9	109	79	-30	-27.5	31.3	22.1	-9.3
- Violence without Injury	486	620	134	27.6	123	113	-10	-8.1	25.3	18.2	-7.1
Sexual Offences	59	112	53	89.8	11	10	-1	-9.1	18.6	8.9	-9.7
- Rape	26	41	15	57.7	6	2	-4	-66.7	23.1	4.9	-18.2
- Rape - Under 16 yrs	6	13	7	116.7	2	1	-1	-50.0	33.3	7.7	-25.6
- Rape - Over 16 yrs	20	28	8	40.0	4	1	-3	-75.0	20.0	3.6	-16.4
- Other Sexual Offences	33	71	38	115.2	5	8	3	60.0	15.2	11.3	-3.9
Robbery	15	16	1	6.7	6	2	-4	-66.7	40.0	12.5	-27.5
- Robbery of business property	0	1	1	-	0	0	0	-	-	0.0	-
- Robbery of Personal Property	15	15	0	0.0	6	2	-4	-66.7	40.0	13.3	-26.7
Theft Offences	1530	1714	184	12.0	267	257	-10	-3.7	17.5	15.0	-2.5
- Burglary	304	381	77	25.3	16	10	-6	-37.5	5.3	2.6	-2.6
- Dwelling Burglary	137	175	38	27.7	11	5	-6	-54.5	8.0	2.9	-5.2
- Other Burglary	167	206	39	23.4	5	5	0	0.0	3.0	2.4	-0.6
- Vehicle Offences (incl. Interference)	294	359	65	22.1	5	10	5	100.0	1.7	2.8	1.1
- Theft from Vehicle	189	252	63	33.3	1	2	1	100.0	0.5	0.8	0.3
- Theft of Motor Vehicle	63	88	25	39.7	4	7	3	75.0	6.3	8.0	1.6
- Vehicle Interference	42	19	-23	-54.8	0	1	1	-	0.0	5.3	5.3
- Theft	932	974	42	4.5	246	237	-9	-3.7	26.4	24.3	-2.1
- Theft from the Person	51	59	8	15.7	3	0	-3	-100.0	5.9	0.0	-5.9
- Theft of Pedal Cycle	125	118	-7	-5.6	4	5	1	25.0	3.2	4.2	1.0
- Shoplifting	391	371	-20	-5.1	210	213	3	1.4	53.7	57.4	3.7
- Other Theft	365	426	61	16.7	29	19	-10	-34.5	7.9	4.5	-3.5
Criminal Damage inc. Arson	425	408	-17	-4.0	60	51	-9	-15.0	14.1	12.5	-1.6
- Criminal Damage	404	393	-11	-2.7	60	51	-9	-15.0	14.9	13.0	-1.9
- Arson	21	15	-6	-28.6	0	0	0	-	0.0	0.0	0.0
Racial/Religiously Aggravated Offences	16	35	19	118.8	4	6	2	50.0	25.0	17.1	-7.9
State Based Crime	Offences				Outcomes				Solved Rates %		
Crime Type	2015	2016	# diff.	% diff.	2015	2016	# diff.	% diff.	2015	2016	% pt. diff.
Drug Offences	96	111	15	15.6	84	102	18	21.4	87.5	91.9	4.4
- Trafficking of Drugs	27	18	-9	-33.3	20	12	-8	-40.0	74.1	66.7	-7.4
- Possession of Drugs	69	93	24	34.8	64	90	26	40.6	92.8	96.8	4.0
Possession of Weapons	25	30	5	20.0	11	21	10	90.9	44.0	70.0	26.0
Public Order	151	219	68	45.0	34	40	6	17.6	22.5	18.3	-4.3
Miscellaneous Crimes against Society	47	103	56	119.1	15	27	12	80.0	31.9	26.2	-5.7

Corporate Services: Performance Summary
Essex Police Performance Summary

Chelmsford

Rolling 12 Months to July

Top Level	Offences				Outcomes				Solved Rates %		
Crime Type	2015	2016	# diff.	% diff.	2015	2016	# diff.	% diff.	2015	2016	% pt. diff.
Anti-Social Behaviour (incidents)	4541	4145	-396	-8.7	-	-	-	-	-	-	-
All Crime (excl. Action (NFIB) Fraud)	9020	10198	1178	13.1	2468	2283	-185	-7.5	27.4	22.4	-5.0
- State Based Crime	983	1204	221	22.5	649	574	-75	-11.6	66.0	47.7	-18.3
- Victim Based Crime	8037	8994	957	11.9	1819	1709	-110	-6.0	22.6	19.0	-3.6
Victim Based Crime	Offences				Outcomes				Solved Rates %		
Crime Type	2015	2016	# diff.	% diff.	2015	2016	# diff.	% diff.	2015	2016	% pt. diff.
Violence Against the Person	2214	2786	572	25.8	798	637	-161	-20.2	36.0	22.9	-13.2
- Homicide	3	5	2	66.7	3	2	-1	-33.3	100.0	40.0	-60.0
- Violence with Injury	981	1075	94	9.6	369	289	-80	-21.7	37.6	26.9	-10.7
- Violence without Injury	1230	1706	476	38.7	426	346	-80	-18.8	34.6	20.3	-14.4
Sexual Offences	220	278	58	26.4	24	40	16	66.7	10.9	14.4	3.5
- Rape	89	105	16	18.0	9	13	4	44.4	10.1	12.4	2.3
- Rape - Under 16 yrs	25	30	5	20.0	3	5	2	66.7	12.0	16.7	4.7
- Rape - Over 16 yrs	64	75	11	17.2	6	8	2	33.3	9.4	10.7	1.3
- Other Sexual Offences	131	173	42	32.1	15	27	12	80.0	11.5	15.6	4.2
Robbery	55	62	7	12.7	17	9	-8	-47.1	30.9	14.5	-16.4
- Robbery of business property	6	7	1	16.7	1	2	1	100.0	16.7	28.6	11.9
- Robbery of Personal Property	49	55	6	12.2	16	7	-9	-56.3	32.7	12.7	-19.9
Theft Offences	4383	4755	372	8.5	782	851	69	8.8	17.8	17.9	0.1
- Burglary	963	1022	59	6.1	61	35	-26	-42.6	6.3	3.4	-2.9
- Dwelling Burglary	424	422	-2	-0.5	36	21	-15	-41.7	8.5	5.0	-3.5
- Other Burglary	539	600	61	11.3	25	14	-11	-44.0	4.6	2.3	-2.3
- Vehicle Offences (incl. Interference)	817	869	52	6.4	22	34	12	54.5	2.7	3.9	1.2
- Theft from Vehicle	553	526	-27	-4.9	5	15	10	200.0	0.9	2.9	1.9
- Theft of Motor Vehicle	171	285	114	66.7	17	17	0	0.0	9.9	6.0	-4.0
- Vehicle Interference	93	58	-35	-37.6	0	2	2	-	0.0	3.4	3.4
- Theft	2603	2864	261	10.0	699	782	83	11.9	26.9	27.3	0.5
- Theft from the Person	173	219	46	26.6	7	6	-1	-14.3	4.0	2.7	-1.3
- Theft of Pedal Cycle	346	310	-36	-10.4	15	10	-5	-33.3	4.3	3.2	-1.1
- Shoplifting	952	1171	219	23.0	554	696	142	25.6	58.2	59.4	1.2
- Other Theft	1132	1164	32	2.8	123	70	-53	-43.1	10.9	6.0	-4.9
Criminal Damage inc. Arson	1165	1113	-52	-4.5	198	172	-26	-13.1	17.0	15.5	-1.5
- Criminal Damage	1124	1068	-56	-5.0	193	170	-23	-11.9	17.2	15.9	-1.3
- Arson	41	45	4	9.8	5	2	-3	-60.0	12.2	4.4	-7.8
Racial/Religiously Aggravated Offences	68	70	2	2.9	22	13	-9	-40.9	32.4	18.6	-13.8
State Based Crime	Offences				Outcomes				Solved Rates %		
Crime Type	2015	2016	# diff.	% diff.	2015	2016	# diff.	% diff.	2015	2016	% pt. diff.
Drug Offences	412	333	-79	-19.2	389	312	-77	-19.8	94.4	93.7	-0.7
- Trafficking of Drugs	63	47	-16	-25.4	46	38	-8	-17.4	73.0	80.9	7.8
- Possession of Drugs	349	286	-63	-18.1	343	274	-69	-20.1	98.3	95.8	-2.5
Possession of Weapons	60	67	7	11.7	42	53	11	26.2	70.0	79.1	9.1
Public Order	373	566	193	51.7	147	122	-25	-17.0	39.4	21.6	-17.9
Miscellaneous Crimes against Society	138	238	100	72.5	71	87	16	22.5	51.4	36.6	-14.9

Corporate Services: Performance Summary
Essex Police Performance Summary

Braintree
Cumulative Year to July

Top Level	Offences				Outcomes				Solved Rates %		
Crime Type	2015	2016	# diff.	% diff.	2015	2016	# diff.	% diff.	2015	2016	% pt. diff.
Anti-Social Behaviour (incidents)	1292	1216	-76	-5.9	-	-	-	-	-	-	-
All Crime (excl. Action (NFIB) Fraud)	2291	2587	296	12.9	421	470	49	11.6	18.4	18.2	-0.2
- State Based Crime	189	314	125	66.1	91	132	41	45.1	48.1	42.0	-6.1
- Victim Based Crime	2102	2273	171	8.1	330	338	8	2.4	15.7	14.9	-0.8
Victim Based Crime	Offences				Outcomes				Solved Rates %		
Crime Type	2015	2016	# diff.	% diff.	2015	2016	# diff.	% diff.	2015	2016	% pt. diff.
Violence Against the Person	612	749	137	22.4	180	179	-1	-0.6	29.4	23.9	-5.5
- Homicide	0	0	0	-	0	0	0	-	-	-	-
- Violence with Injury	241	333	92	38.2	77	84	7	9.1	32.0	25.2	-6.7
- Violence without Injury	371	416	45	12.1	103	95	-8	-7.8	27.8	22.8	-4.9
Sexual Offences	67	88	21	31.3	11	8	-3	-27.3	16.4	9.1	-7.3
- Rape	21	31	10	47.6	3	0	-3	-100.0	14.3	0.0	-14.3
- Rape - Under 16 yrs	11	9	-2	-18.2	3	0	-3	-100.0	27.3	0.0	-27.3
- Rape - Over 16 yrs	10	22	12	120.0	0	0	0	-	0.0	0.0	0.0
- Other Sexual Offences	46	57	11	23.9	8	8	0	0.0	17.4	14.0	-3.4
Robbery	8	11	3	37.5	3	5	2	66.7	37.5	45.5	8.0
- Robbery of business property	0	0	0	-	2	3	1	50.0	-	-	-
- Robbery of Personal Property	8	11	3	37.5	1	2	1	100.0	12.5	18.2	5.7
Theft Offences	1044	1089	45	4.3	97	86	-11	-11.3	9.3	7.9	-1.4
- Burglary	305	408	103	33.8	11	11	0	0.0	3.6	2.7	-0.9
- Dwelling Burglary	128	248	120	93.8	7	8	1	14.3	5.5	3.2	-2.2
- Other Burglary	177	160	-17	-9.6	4	3	-1	-25.0	2.3	1.9	-0.4
- Vehicle Offences (incl. Interference)	225	214	-11	-4.9	4	2	-2	-50.0	1.8	0.9	-0.8
- Theft from Vehicle	174	138	-36	-20.7	3	0	-3	-100.0	1.7	0.0	-1.7
- Theft of Motor Vehicle	25	60	35	140.0	1	2	1	100.0	4.0	3.3	-0.7
- Vehicle Interference	26	16	-10	-38.5	0	0	0	-	0.0	0.0	0.0
- Theft	514	467	-47	-9.1	82	73	-9	-11.0	16.0	15.6	-0.3
- Theft from the Person	26	25	-1	-3.8	0	2	2	-	0.0	8.0	8.0
- Theft of Pedal Cycle	58	48	-10	-17.2	2	1	-1	-50.0	3.4	2.1	-1.4
- Shoplifting	126	140	14	11.1	58	59	1	1.7	46.0	42.1	-3.9
- Other Theft	304	254	-50	-16.4	22	11	-11	-50.0	7.2	4.3	-2.9
Criminal Damage inc. Arson	371	336	-35	-9.4	39	60	21	53.8	10.5	17.9	7.3
- Criminal Damage	359	325	-34	-9.5	39	58	19	48.7	10.9	17.8	7.0
- Arson	12	11	-1	-8.3	0	2	2	-	0.0	18.2	18.2
Racial/Religiously Aggravated Offences	7	15	8	114.3	1	3	2	200.0	14.3	20.0	5.7
State Based Crime	Offences				Outcomes				Solved Rates %		
Crime Type	2015	2016	# diff.	% diff.	2015	2016	# diff.	% diff.	2015	2016	% pt. diff.
Drug Offences	54	63	9	16.7	48	53	5	10.4	88.9	84.1	-4.8
- Trafficking of Drugs	5	12	7	140.0	4	9	5	125.0	80.0	75.0	-5.0
- Possession of Drugs	49	51	2	4.1	44	44	0	0.0	89.8	86.3	-3.5
Possession of Weapons	11	20	9	81.8	7	11	4	57.1	63.6	55.0	-8.6
Public Order	94	185	91	96.8	32	54	22	68.8	34.0	29.2	-4.9
Miscellaneous Crimes against Society	30	46	16	53.3	4	14	10	250.0	13.3	30.4	17.1

Corporate Services: Performance Summary
Essex Police Performance Summary

Braintree

Rolling 12 Months to July

Top Level	Offences				Outcomes				Solved Rates %		
Crime Type	2015	2016	# diff.	% diff.	2015	2016	# diff.	% diff.	2015	2016	% pt. diff.
Anti-Social Behaviour (incidents)	3666	3361	-305	-8.3	-	-	-	-	-	-	-
All Crime (excl. Action (NFIB) Fraud)	6190	7154	964	15.6	1548	1370	-178	-11.5	25.0	19.2	-5.9
- State Based Crime	561	752	191	34.0	355	340	-15	-4.2	63.3	45.2	-18.1
- Victim Based Crime	5629	6402	773	13.7	1193	1030	-163	-13.7	21.2	16.1	-5.1
Victim Based Crime	Offences				Outcomes				Solved Rates %		
Crime Type	2015	2016	# diff.	% diff.	2015	2016	# diff.	% diff.	2015	2016	% pt. diff.
Violence Against the Person	1528	2031	503	32.9	586	531	-55	-9.4	38.4	26.1	-12.2
- Homicide	0	1	1	-	0	0	0	-	-	0.0	-
- Violence with Injury	652	837	185	28.4	255	266	11	4.3	39.1	31.8	-7.3
- Violence without Injury	876	1193	317	36.2	331	265	-66	-19.9	37.8	22.2	-15.6
Sexual Offences	179	292	113	63.1	27	38	11	40.7	15.1	13.0	-2.1
- Rape	62	71	9	14.5	8	7	-1	-12.5	12.9	9.9	-3.0
- Rape - Under 16 yrs	24	28	4	16.7	8	6	-2	-25.0	33.3	21.4	-11.9
- Rape - Over 16 yrs	38	43	5	13.2	0	1	1	-	0.0	2.3	2.3
- Other Sexual Offences	117	221	104	88.9	19	31	12	63.2	16.2	14.0	-2.2
Robbery	30	37	7	23.3	5	8	3	60.0	16.7	21.6	5.0
- Robbery of business property	4	5	1	25.0	3	5	2	66.7	75.0	100.0	25.0
- Robbery of Personal Property	26	32	6	23.1	2	3	1	50.0	7.7	9.4	1.7
Theft Offences	2909	3022	113	3.9	425	298	-127	-29.9	14.6	9.9	-4.7
- Burglary	797	1006	209	26.2	82	43	-39	-47.6	10.3	4.3	-6.0
- Dwelling Burglary	295	500	205	69.5	71	24	-47	-66.2	24.1	4.8	-19.3
- Other Burglary	502	506	4	0.8	11	19	8	72.7	2.2	3.8	1.6
- Vehicle Offences (incl. Interference)	605	578	-27	-4.5	18	21	3	16.7	3.0	3.6	0.7
- Theft from Vehicle	443	373	-70	-15.8	9	6	-3	-33.3	2.0	1.6	-0.4
- Theft of Motor Vehicle	99	154	55	55.6	8	14	6	75.0	8.1	9.1	1.0
- Vehicle Interference	63	51	-12	-19.0	1	1	0	0.0	1.6	2.0	0.4
- Theft	1507	1438	-69	-4.6	325	234	-91	-28.0	21.6	16.3	-5.3
- Theft from the Person	66	93	27	40.9	3	4	1	33.3	4.5	4.3	-0.2
- Theft of Pedal Cycle	156	156	0	0.0	7	3	-4	-57.1	4.5	1.9	-2.6
- Shoplifting	409	458	49	12.0	204	174	-30	-14.7	49.9	38.0	-11.9
- Other Theft	876	731	-145	-16.6	111	53	-58	-52.3	12.7	7.3	-5.4
Criminal Damage inc. Arson	983	1020	37	3.8	150	155	5	3.3	15.3	15.2	-0.1
- Criminal Damage	953	991	38	4.0	146	150	4	2.7	15.3	15.1	-0.2
- Arson	30	29	-1	-3.3	4	5	1	25.0	13.3	17.2	3.9
Racial/Religiously Aggravated Offences	26	38	12	46.2	9	12	3	33.3	34.6	31.6	-3.0
State Based Crime	Offences				Outcomes				Solved Rates %		
Crime Type	2015	2016	# diff.	% diff.	2015	2016	# diff.	% diff.	2015	2016	% pt. diff.
Drug Offences	211	160	-51	-24.2	202	137	-65	-32.2	95.7	85.6	-10.1
- Trafficking of Drugs	21	31	10	47.6	16	16	0	0.0	76.2	51.6	-24.6
- Possession of Drugs	190	129	-61	-32.1	186	121	-65	-34.9	97.9	93.8	-4.1
Possession of Weapons	26	42	16	61.5	19	26	7	36.8	73.1	61.9	-11.2
Public Order	238	447	209	87.8	99	144	45	45.5	41.6	32.2	-9.4
Miscellaneous Crimes against Society	86	103	17	19.8	35	33	-2	-5.7	40.7	32.0	-8.7

Corporate Services: Performance Summary
Essex Police Performance Summary

Uttlesford
Cumulative Year to July

Top Level	Offences				Outcomes				Solved Rates %		
Crime Type	2015	2016	# diff.	% diff.	2015	2016	# diff.	% diff.	2015	2016	% pt. diff.
Anti-Social Behaviour (incidents)	468	383	-85	-18.2	-	-	-	-	-	-	-
All Crime (excl. Action (NFIB) Fraud)	861	886	25	2.9	138	115	-23	-16.7	16.0	13.0	-3.0
- State Based Crime	63	95	32	50.8	33	26	-7	-21.2	52.4	27.4	-25.0
- Victim Based Crime	798	791	-7	-0.9	105	89	-16	-15.2	13.2	11.3	-1.9
Victim Based Crime	Offences				Outcomes				Solved Rates %		
Crime Type	2015	2016	# diff.	% diff.	2015	2016	# diff.	% diff.	2015	2016	% pt. diff.
Violence Against the Person	176	234	58	33.0	46	40	-6	-13.0	26.1	17.1	-9.0
- Homicide	3	0	-3	-100.0	1	0	-1	-100.0	33.3	-	-
- Violence with Injury	82	94	12	14.6	28	23	-5	-17.9	34.1	24.5	-9.7
- Violence without Injury	91	140	49	53.8	17	17	0	0.0	18.7	12.1	-6.5
Sexual Offences	22	32	10	45.5	4	0	-4	-100.0	18.2	0.0	-18.2
- Rape	10	13	3	30.0	1	0	-1	-100.0	10.0	0.0	-10.0
- Rape - Under 16 yrs	6	3	-3	-50.0	0	0	0	-	0.0	0.0	0.0
- Rape - Over 16 yrs	4	10	6	150.0	1	0	-1	-100.0	25.0	0.0	-25.0
- Other Sexual Offences	12	19	7	58.3	3	0	-3	-100.0	25.0	0.0	-25.0
Robbery	3	2	-1	-33.3	2	0	-2	-100.0	66.7	0.0	-66.7
- Robbery of business property	0	1	1	-	0	0	0	-	-	0.0	-
- Robbery of Personal Property	3	1	-2	-66.7	2	0	-2	-100.0	66.7	0.0	-66.7
Theft Offences	476	394	-82	-17.2	41	37	-4	-9.8	8.6	9.4	0.8
- Burglary	155	127	-28	-18.1	17	3	-14	-82.4	11.0	2.4	-8.6
- Dwelling Burglary	61	47	-14	-23.0	7	3	-4	-57.1	11.5	6.4	-5.1
- Other Burglary	94	80	-14	-14.9	10	0	-10	-100.0	10.6	0.0	-10.6
- Vehicle Offences (incl. Interference)	124	85	-39	-31.5	9	1	-8	-88.9	7.3	1.2	-6.1
- Theft from Vehicle	91	62	-29	-31.9	7	0	-7	-100.0	7.7	0.0	-7.7
- Theft of Motor Vehicle	16	15	-1	-6.3	2	1	-1	-50.0	12.5	6.7	-5.8
- Vehicle Interference	17	8	-9	-52.9	0	0	0	-	0.0	0.0	0.0
- Theft	197	182	-15	-7.6	15	33	18	120.0	7.6	18.1	10.5
- Theft from the Person	18	5	-13	-72.2	1	1	0	0.0	5.6	20.0	14.4
- Theft of Pedal Cycle	6	6	0	0.0	0	0	0	-	0.0	0.0	0.0
- Shoplifting	24	36	12	50.0	6	21	15	250.0	25.0	58.3	33.3
- Other Theft	149	135	-14	-9.4	8	11	3	37.5	5.4	8.1	2.8
Criminal Damage inc. Arson	121	129	8	6.6	12	12	0	0.0	9.9	9.3	-0.6
- Criminal Damage	115	126	11	9.6	12	12	0	0.0	10.4	9.5	-0.9
- Arson	6	3	-3	-50.0	0	0	0	-	0.0	0.0	0.0
Racial/Religiously Aggravated Offences	1	7	6	600.0	1	0	-1	-100.0	100.0	0.0	-100.0
State Based Crime	Offences				Outcomes				Solved Rates %		
Crime Type	2015	2016	# diff.	% diff.	2015	2016	# diff.	% diff.	2015	2016	% pt. diff.
Drug Offences	17	20	3	17.6	16	15	-1	-6.3	94.1	75.0	-19.1
- Trafficking of Drugs	2	1	-1	-50.0	1	1	0	0.0	50.0	100.0	50.0
- Possession of Drugs	15	19	4	26.7	15	14	-1	-6.7	100.0	73.7	-26.3
Possession of Weapons	8	6	-2	-25.0	5	2	-3	-60.0	62.5	33.3	-29.2
Public Order	30	45	15	50.0	8	5	-3	-37.5	26.7	11.1	-15.6
Miscellaneous Crimes against Society	8	24	16	200.0	4	4	0	0.0	50.0	16.7	-33.3

Corporate Services: Performance Summary
Essex Police Performance Summary

Uttlesford

Rolling 12 Months to July

Top Level	Offences				Outcomes				Solved Rates %		
Crime Type	2015	2016	# diff.	% diff.	2015	2016	# diff.	% diff.	2015	2016	% pt. diff.
Anti-Social Behaviour (incidents)	1333	1094	-239	-17.9	-	-	-	-	-	-	-
All Crime (excl. Action (NFIB) Fraud)	2546	2514	-32	-1.3	498	417	-81	-16.3	19.6	16.6	-3.0
- State Based Crime	171	212	41	24.0	108	78	-30	-27.8	63.2	36.8	-26.4
- Victim Based Crime	2375	2302	-73	-3.1	390	339	-51	-13.1	16.4	14.7	-1.7
Victim Based Crime	Offences				Outcomes				Solved Rates %		
Crime Type	2015	2016	# diff.	% diff.	2015	2016	# diff.	% diff.	2015	2016	% pt. diff.
Violence Against the Person	501	667	166	33.1	178	182	4	2.2	35.5	27.3	-8.2
- Homicide	3	0	-3	-100.0	1	0	-1	-100.0	33.3	-	-
- Violence with Injury	234	267	33	14.1	98	94	-4	-4.1	41.9	35.2	-6.7
- Violence without Injury	264	400	136	51.5	79	88	9	11.4	29.9	22.0	-7.9
Sexual Offences	70	74	4	5.7	17	6	-11	-64.7	24.3	8.1	-16.2
- Rape	26	37	11	42.3	6	2	-4	-66.7	23.1	5.4	-17.7
- Rape - Under 16 yrs	15	14	-1	-6.7	3	1	-2	-66.7	20.0	7.1	-12.9
- Rape - Over 16 yrs	11	23	12	109.1	3	1	-2	-66.7	27.3	4.3	-22.9
- Other Sexual Offences	44	37	-7	-15.9	11	4	-7	-63.6	25.0	10.8	-14.2
Robbery	8	7	-1	-12.5	2	1	-1	-50.0	25.0	14.3	-10.7
- Robbery of business property	0	2	2	-	0	0	0	-	-	0.0	-
- Robbery of Personal Property	8	5	-3	-37.5	2	1	-1	-50.0	25.0	20.0	-5.0
Theft Offences	1413	1169	-244	-17.3	142	111	-31	-21.8	10.0	9.5	-0.6
- Burglary	507	385	-122	-24.1	41	12	-29	-70.7	8.1	3.1	-5.0
- Dwelling Burglary	148	140	-8	-5.4	26	7	-19	-73.1	17.6	5.0	-12.6
- Other Burglary	359	245	-114	-31.8	15	5	-10	-66.7	4.2	2.0	-2.1
- Vehicle Offences (incl. Interference)	357	280	-77	-21.6	18	9	-9	-50.0	5.0	3.2	-1.8
- Theft from Vehicle	261	200	-61	-23.4	7	1	-6	-85.7	2.7	0.5	-2.2
- Theft of Motor Vehicle	56	58	2	3.6	11	8	-3	-27.3	19.6	13.8	-5.8
- Vehicle Interference	40	22	-18	-45.0	0	0	0	-	0.0	0.0	0.0
- Theft	549	504	-45	-8.2	83	90	7	8.4	15.1	17.9	2.7
- Theft from the Person	27	22	-5	-18.5	1	1	0	0.0	3.7	4.5	0.8
- Theft of Pedal Cycle	20	18	-2	-10.0	0	1	1	-	0.0	5.6	5.6
- Shoplifting	100	105	5	5.0	37	47	10	27.0	37.0	44.8	7.8
- Other Theft	402	359	-43	-10.7	45	41	-4	-8.9	11.2	11.4	0.2
Criminal Damage inc. Arson	383	385	2	0.5	51	39	-12	-23.5	13.3	10.1	-3.2
- Criminal Damage	369	371	2	0.5	50	38	-12	-24.0	13.6	10.2	-3.3
- Arson	14	14	0	0.0	1	1	0	0.0	7.1	7.1	0.0
Racial/Religiously Aggravated Offences	9	15	6	66.7	3	1	-2	-66.7	33.3	6.7	-26.7
State Based Crime	Offences				Outcomes				Solved Rates %		
Crime Type	2015	2016	# diff.	% diff.	2015	2016	# diff.	% diff.	2015	2016	% pt. diff.
Drug Offences	57	47	-10	-17.5	54	43	-11	-20.4	94.7	91.5	-3.2
- Trafficking of Drugs	10	6	-4	-40.0	7	7	0	0.0	70.0	116.7	46.7
- Possession of Drugs	47	41	-6	-12.8	47	36	-11	-23.4	100.0	87.8	-12.2
Possession of Weapons	18	11	-7	-38.9	11	7	-4	-36.4	61.1	63.6	2.5
Public Order	64	111	47	73.4	30	19	-11	-36.7	46.9	17.1	-29.8
Miscellaneous Crimes against Society	32	43	11	34.4	13	9	-4	-30.8	40.6	20.9	-19.7

Corporate Services: Performance Summary

Essex Police Performance Summary

Maldon

Cumulative Year to July

Top Level	Offences				Outcomes				Solved Rates %		
Crime Type	2015	2016	# diff.	% diff.	2015	2016	# diff.	% diff.	2015	2016	% pt. diff.
Anti-Social Behaviour (incidents)	413	352	-61	-14.8	-	-	-	-	-	-	-
All Crime (excl. Action (NFIB) Fraud)	789	856	67	8.5	123	125	2	1.6	15.6	14.6	-1.0
- State Based Crime	96	91	-5	-5.2	46	35	-11	-23.9	47.9	38.5	-9.5
- Victim Based Crime	693	765	72	10.4	77	90	13	16.9	11.1	11.8	0.7
Victim Based Crime	Offences				Outcomes				Solved Rates %		
Crime Type	2015	2016	# diff.	% diff.	2015	2016	# diff.	% diff.	2015	2016	% pt. diff.
Violence Against the Person	212	230	18	8.5	52	55	3	5.8	24.5	23.9	-0.6
- Homicide	1	0	-1	-100.0	1	0	-1	-100.0	100.0	-	-
- Violence with Injury	92	96	4	4.3	31	31	0	0.0	33.7	32.3	-1.4
- Violence without Injury	119	134	15	12.6	20	24	4	20.0	16.8	17.9	1.1
Sexual Offences	25	20	-5	-20.0	0	5	5	-	0.0	25.0	25.0
- Rape	19	4	-15	-78.9	0	3	3	-	0.0	75.0	75.0
- Rape - Under 16 yrs	13	2	-11	-84.6	0	3	3	-	0.0	150.0	150.0
- Rape - Over 16 yrs	6	2	-4	-66.7	0	0	0	-	0.0	0.0	0.0
- Other Sexual Offences	6	16	10	166.7	0	2	2	-	0.0	12.5	12.5
Robbery	4	1	-3	-75.0	2	0	-2	-100.0	50.0	0.0	-50.0
- Robbery of business property	0	0	0	-	0	0	0	-	-	-	-
- Robbery of Personal Property	4	1	-3	-75.0	2	0	-2	-100.0	50.0	0.0	-50.0
Theft Offences	364	373	9	2.5	14	17	3	21.4	3.8	4.6	0.7
- Burglary	123	139	16	13.0	1	2	1	100.0	0.8	1.4	0.6
- Dwelling Burglary	30	50	20	66.7	1	1	0	0.0	3.3	2.0	-1.3
- Other Burglary	93	89	-4	-4.3	0	1	1	-	0.0	1.1	1.1
- Vehicle Offences (incl. Interference)	89	86	-3	-3.4	4	1	-3	-75.0	4.5	1.2	-3.3
- Theft from Vehicle	61	52	-9	-14.8	2	0	-2	-100.0	3.3	0.0	-3.3
- Theft of Motor Vehicle	21	24	3	14.3	2	1	-1	-50.0	9.5	4.2	-5.4
- Vehicle Interference	7	10	3	42.9	0	0	0	-	0.0	0.0	0.0
- Theft	152	148	-4	-2.6	9	14	5	55.6	5.9	9.5	3.5
- Theft from the Person	16	10	-6	-37.5	0	0	0	-	0.0	0.0	0.0
- Theft of Pedal Cycle	5	8	3	60.0	0	0	0	-	0.0	0.0	0.0
- Shoplifting	24	25	1	4.2	5	10	5	100.0	20.8	40.0	19.2
- Other Theft	107	105	-2	-1.9	4	4	0	0.0	3.7	3.8	0.1
Criminal Damage inc. Arson	88	141	53	60.2	9	13	4	44.4	10.2	9.2	-1.0
- Criminal Damage	85	139	54	63.5	8	12	4	50.0	9.4	8.6	-0.8
- Arson	3	2	-1	-33.3	1	1	0	0.0	33.3	50.0	16.7
Racial/Religiously Aggravated Offences	4	3	-1	-25.0	0	0	0	-	0.0	0.0	0.0
State Based Crime	Offences				Outcomes				Solved Rates %		
Crime Type	2015	2016	# diff.	% diff.	2015	2016	# diff.	% diff.	2015	2016	% pt. diff.
Drug Offences	33	20	-13	-39.4	24	8	-16	-66.7	72.7	40.0	-32.7
- Trafficking of Drugs	9	7	-2	-22.2	6	0	-6	-100.0	66.7	0.0	-66.7
- Possession of Drugs	24	13	-11	-45.8	18	8	-10	-55.6	75.0	61.5	-13.5
Possession of Weapons	6	4	-2	-33.3	4	3	-1	-25.0	66.7	75.0	8.3
Public Order	44	53	9	20.5	13	20	7	53.8	29.5	37.7	8.2
Miscellaneous Crimes against Society	13	14	1	7.7	5	4	-1	-20.0	38.5	28.6	-9.9

Corporate Services: Performance Summary
Essex Police Performance Summary

Maldon

Rolling 12 Months to July

Top Level	Offences				Outcomes				Solved Rates %		
Crime Type	2015	2016	# diff.	% diff.	2015	2016	# diff.	% diff.	2015	2016	% pt. diff.
Anti-Social Behaviour (incidents)	1127	1034	-93	-8.3	-	-	-	-	-	-	-
All Crime (excl. Action (NFIB) Fraud)	2297	2413	116	5.1	481	392	-89	-18.5	20.9	16.2	-4.7
- State Based Crime	230	198	-32	-13.9	135	93	-42	-31.1	58.7	47.0	-11.7
- Victim Based Crime	2067	2215	148	7.2	346	299	-47	-13.6	16.7	13.5	-3.2
Victim Based Crime	Offences				Outcomes				Solved Rates %		
Crime Type	2015	2016	# diff.	% diff.	2015	2016	# diff.	% diff.	2015	2016	% pt. diff.
Violence Against the Person	573	715	142	24.8	188	186	-2	-1.1	32.8	26.0	-6.8
- Homicide	1	1	0	0.0	1	1	0	0.0	100.0	100.0	0.0
- Violence with Injury	254	297	43	16.9	99	97	-2	-2.0	39.0	32.7	-6.3
- Violence without Injury	318	417	99	31.1	88	88	0	0.0	27.7	21.1	-6.6
Sexual Offences	70	69	-1	-1.4	8	14	6	75.0	11.4	20.3	8.9
- Rape	38	21	-17	-44.7	1	3	2	200.0	2.6	14.3	11.7
- Rape - Under 16 yrs	21	12	-9	-42.9	1	3	2	200.0	4.8	25.0	20.2
- Rape - Over 16 yrs	17	9	-8	-47.1	0	0	0	-	0.0	0.0	0.0
- Other Sexual Offences	32	48	16	50.0	7	11	4	57.1	21.9	22.9	1.0
Robbery	14	8	-6	-42.9	10	1	-9	-90.0	71.4	12.5	-58.9
- Robbery of business property	1	2	1	100.0	0	0	0	-	0.0	0.0	0.0
- Robbery of Personal Property	13	6	-7	-53.8	10	1	-9	-90.0	76.9	16.7	-60.3
Theft Offences	1113	1043	-70	-6.3	94	61	-33	-35.1	8.4	5.8	-2.6
- Burglary	328	351	23	7.0	8	5	-3	-37.5	2.4	1.4	-1.0
- Dwelling Burglary	75	133	58	77.3	5	3	-2	-40.0	6.7	2.3	-4.4
- Other Burglary	253	218	-35	-13.8	3	2	-1	-33.3	1.2	0.9	-0.3
- Vehicle Offences (incl. Interference)	313	268	-45	-14.4	14	8	-6	-42.9	4.5	3.0	-1.5
- Theft from Vehicle	200	175	-25	-12.5	9	3	-6	-66.7	4.5	1.7	-2.8
- Theft of Motor Vehicle	82	61	-21	-25.6	5	5	0	0.0	6.1	8.2	2.1
- Vehicle Interference	31	32	1	3.2	0	0	0	-	0.0	0.0	0.0
- Theft	472	424	-48	-10.2	72	48	-24	-33.3	15.3	11.3	-3.9
- Theft from the Person	39	33	-6	-15.4	0	1	1	-	0.0	3.0	3.0
- Theft of Pedal Cycle	20	18	-2	-10.0	0	0	0	-	0.0	0.0	0.0
- Shoplifting	97	68	-29	-29.9	49	24	-25	-51.0	50.5	35.3	-15.2
- Other Theft	316	305	-11	-3.5	23	23	0	0.0	7.3	7.5	0.3
Criminal Damage inc. Arson	297	380	83	27.9	46	37	-9	-19.6	15.5	9.7	-5.8
- Criminal Damage	287	372	85	29.6	43	34	-9	-20.9	15.0	9.1	-5.8
- Arson	10	8	-2	-20.0	3	3	0	0.0	30.0	37.5	7.5
Racial/Religiously Aggravated Offences	13	7	-6	-46.2	3	2	-1	-33.3	23.1	28.6	5.5
State Based Crime	Offences				Outcomes				Solved Rates %		
Crime Type	2015	2016	# diff.	% diff.	2015	2016	# diff.	% diff.	2015	2016	% pt. diff.
Drug Offences	84	39	-45	-53.6	69	32	-37	-53.6	82.1	82.1	-0.1
- Trafficking of Drugs	24	9	-15	-62.5	14	3	-11	-78.6	58.3	33.3	-25.0
- Possession of Drugs	60	30	-30	-50.0	55	29	-26	-47.3	91.7	96.7	5.0
Possession of Weapons	14	9	-5	-35.7	11	7	-4	-36.4	78.6	77.8	-0.8
Public Order	96	127	31	32.3	42	42	0	0.0	43.8	33.1	-10.7
Miscellaneous Crimes against Society	36	23	-13	-36.1	13	12	-1	-7.7	36.1	52.2	16.1

Corporate Services: Performance Summary
Essex Police Performance Summary

Colchester
Cumulative Year to July

Top Level	Offences				Outcomes				Solved Rates %		
Crime Type	2015	2016	# diff.	% diff.	2015	2016	# diff.	% diff.	2015	2016	% pt. diff.
Anti-Social Behaviour (incidents)	2215	1952	-263	-11.9	-	-	-	-	-	-	-
All Crime (excl. Action (NFIB) Fraud)	4106	4266	160	3.9	825	867	42	5.1	20.1	20.3	0.2
- State Based Crime	384	468	84	21.9	161	181	20	12.4	41.9	38.7	-3.3
- Victim Based Crime	3722	3798	76	2.0	664	686	22	3.3	17.8	18.1	0.2
Victim Based Crime	Offences				Outcomes				Solved Rates %		
Crime Type	2015	2016	# diff.	% diff.	2015	2016	# diff.	% diff.	2015	2016	% pt. diff.
Violence Against the Person	1128	1373	245	21.7	253	314	61	24.1	22.4	22.9	0.4
- Homicide	0	1	1	-	2	1	-1	-50.0	-	100.0	-
- Violence with Injury	463	540	77	16.6	118	160	42	35.6	25.5	29.6	4.1
- Violence without Injury	665	832	167	25.1	133	153	20	15.0	20.0	18.4	-1.6
Sexual Offences	116	153	37	31.9	10	14	4	40.0	8.6	9.2	0.5
- Rape	49	50	1	2.0	3	7	4	133.3	6.1	14.0	7.9
- Rape - Under 16 yrs	16	13	-3	-18.8	1	7	6	600.0	6.3	53.8	47.6
- Rape - Over 16 yrs	33	37	4	12.1	2	0	-2	-100.0	6.1	0.0	-6.1
- Other Sexual Offences	67	103	36	53.7	7	7	0	0.0	10.4	6.8	-3.7
Robbery	33	34	1	3.0	3	8	5	166.7	9.1	23.5	14.4
- Robbery of business property	0	5	5	-	0	3	3	-	-	60.0	-
- Robbery of Personal Property	33	29	-4	-12.1	3	5	2	66.7	9.1	17.2	8.2
Theft Offences	1867	1664	-203	-10.9	315	264	-51	-16.2	16.9	15.9	-1.0
- Burglary	491	315	-176	-35.8	54	16	-38	-70.4	11.0	5.1	-5.9
- Dwelling Burglary	237	159	-78	-32.9	47	8	-39	-83.0	19.8	5.0	-14.8
- Other Burglary	254	156	-98	-38.6	7	8	1	14.3	2.8	5.1	2.4
- Vehicle Offences (incl. Interference)	279	259	-20	-7.2	8	12	4	50.0	2.9	4.6	1.8
- Theft from Vehicle	171	155	-16	-9.4	3	4	1	33.3	1.8	2.6	0.8
- Theft of Motor Vehicle	85	75	-10	-11.8	5	6	1	20.0	5.9	8.0	2.1
- Vehicle Interference	23	29	6	26.1	0	2	2	-	0.0	6.9	6.9
- Theft	1097	1090	-7	-0.6	253	236	-17	-6.7	23.1	21.7	-1.4
- Theft from the Person	60	53	-7	-11.7	5	2	-3	-60.0	8.3	3.8	-4.6
- Theft of Pedal Cycle	187	81	-106	-56.7	20	2	-18	-90.0	10.7	2.5	-8.2
- Shoplifting	405	470	65	16.0	189	200	11	5.8	46.7	42.6	-4.1
- Other Theft	445	486	41	9.2	39	32	-7	-17.9	8.8	6.6	-2.2
Criminal Damage inc. Arson	578	574	-4	-0.7	83	86	3	3.6	14.4	15.0	0.6
- Criminal Damage	560	564	4	0.7	81	84	3	3.7	14.5	14.9	0.4
- Arson	18	10	-8	-44.4	2	2	0	0.0	11.1	20.0	8.9
Racial/Religiously Aggravated Offences	24	42	18	75.0	8	7	-1	-12.5	33.3	16.7	-16.7
State Based Crime	Offences				Outcomes				Solved Rates %		
Crime Type	2015	2016	# diff.	% diff.	2015	2016	# diff.	% diff.	2015	2016	% pt. diff.
Drug Offences	90	74	-16	-17.8	78	61	-17	-21.8	86.7	82.4	-4.2
- Trafficking of Drugs	25	18	-7	-28.0	18	14	-4	-22.2	72.0	77.8	5.8
- Possession of Drugs	65	56	-9	-13.8	60	47	-13	-21.7	92.3	83.9	-8.4
Possession of Weapons	25	22	-3	-12.0	10	13	3	30.0	40.0	59.1	19.1
Public Order	199	288	89	44.7	54	87	33	61.1	27.1	30.2	3.1
Miscellaneous Crimes against Society	70	84	14	20.0	19	20	1	5.3	27.1	23.8	-3.3

Corporate Services: Performance Summary
Essex Police Performance Summary

Colchester

Rolling 12 Months to July

Top Level	Offences				Outcomes				Solved Rates %		
Crime Type	2015	2016	# diff.	% diff.	2015	2016	# diff.	% diff.	2015	2016	% pt. diff.
Anti-Social Behaviour (incidents)	6004	5331	-673	-11.2	-	-	-	-	-	-	-
All Crime (excl. Action (NFIB) Fraud)	11430	12127	697	6.1	2871	2885	14	0.5	25.1	23.8	-1.3
- State Based Crime	984	1332	348	35.4	591	676	85	14.4	60.1	50.8	-9.3
- Victim Based Crime	10446	10795	349	3.3	2280	2209	-71	-3.1	21.8	20.5	-1.4
Victim Based Crime	Offences				Outcomes				Solved Rates %		
Crime Type	2015	2016	# diff.	% diff.	2015	2016	# diff.	% diff.	2015	2016	% pt. diff.
Violence Against the Person	3031	3848	817	27.0	933	987	54	5.8	30.8	25.6	-5.1
- Homicide	0	1	1	-	2	1	-1	-50.0	-	100.0	-
- Violence with Injury	1300	1474	174	13.4	459	455	-4	-0.9	35.3	30.9	-4.4
- Violence without Injury	1731	2373	642	37.1	472	531	59	12.5	27.3	22.4	-4.9
Sexual Offences	325	389	64	19.7	34	66	32	94.1	10.5	17.0	6.5
- Rape	130	134	4	3.1	6	18	12	200.0	4.6	13.4	8.8
- Rape - Under 16 yrs	39	37	-2	-5.1	2	11	9	450.0	5.1	29.7	24.6
- Rape - Over 16 yrs	91	97	6	6.6	4	7	3	75.0	4.4	7.2	2.8
- Other Sexual Offences	195	255	60	30.8	28	48	20	71.4	14.4	18.8	4.5
Robbery	87	89	2	2.3	19	30	11	57.9	21.8	33.7	11.9
- Robbery of business property	3	9	6	200.0	0	7	7	-	0.0	77.8	77.8
- Robbery of Personal Property	84	80	-4	-4.8	19	23	4	21.1	22.6	28.8	6.1
Theft Offences	5322	4821	-501	-9.4	1030	869	-161	-15.6	19.4	18.0	-1.3
- Burglary	1430	965	-465	-32.5	143	62	-81	-56.6	10.0	6.4	-3.6
- Dwelling Burglary	718	495	-223	-31.1	109	44	-65	-59.6	15.2	8.9	-6.3
- Other Burglary	712	470	-242	-34.0	34	18	-16	-47.1	4.8	3.8	-0.9
- Vehicle Offences (incl. Interference)	867	743	-124	-14.3	49	28	-21	-42.9	5.7	3.8	-1.9
- Theft from Vehicle	532	469	-63	-11.8	16	5	-11	-68.8	3.0	1.1	-1.9
- Theft of Motor Vehicle	239	192	-47	-19.7	30	19	-11	-36.7	12.6	9.9	-2.7
- Vehicle Interference	96	82	-14	-14.6	3	4	1	33.3	3.1	4.9	1.8
- Theft	3025	3113	88	2.9	838	779	-59	-7.0	27.7	25.0	-2.7
- Theft from the Person	147	195	48	32.7	5	7	2	40.0	3.4	3.6	0.2
- Theft of Pedal Cycle	414	247	-167	-40.3	32	27	-5	-15.6	7.7	10.9	3.2
- Shoplifting	1138	1316	178	15.6	650	632	-18	-2.8	57.1	48.0	-9.1
- Other Theft	1326	1355	29	2.2	151	113	-38	-25.2	11.4	8.3	-3.0
Criminal Damage inc. Arson	1681	1648	-33	-2.0	264	257	-7	-2.7	15.7	15.6	-0.1
- Criminal Damage	1636	1616	-20	-1.2	258	253	-5	-1.9	15.8	15.7	-0.1
- Arson	45	32	-13	-28.9	6	4	-2	-33.3	13.3	12.5	-0.8
Racial/Religiously Aggravated Offences	81	100	19	23.5	40	28	-12	-30.0	49.4	28.0	-21.4
State Based Crime	Offences				Outcomes				Solved Rates %		
Crime Type	2015	2016	# diff.	% diff.	2015	2016	# diff.	% diff.	2015	2016	% pt. diff.
Drug Offences	303	301	-2	-0.7	300	277	-23	-7.7	99.0	92.0	-7.0
- Trafficking of Drugs	49	97	48	98.0	41	81	40	97.6	83.7	83.5	-0.2
- Possession of Drugs	254	204	-50	-19.7	259	196	-63	-24.3	102.0	96.1	-5.9
Possession of Weapons	58	66	8	13.8	32	44	12	37.5	55.2	66.7	11.5
Public Order	466	760	294	63.1	185	269	84	45.4	39.7	35.4	-4.3
Miscellaneous Crimes against Society	157	205	48	30.6	74	86	12	16.2	47.1	42.0	-5.2

Corporate Services: Performance Summary

Essex Police Performance Summary

Trending

Cumulative Year to July

Top Level	Offences				Outcomes				Solved Rates %		
Crime Type	2015	2016	# diff.	% diff.	2015	2016	# diff.	% diff.	2015	2016	% pt. diff.
Anti-Social Behaviour (incidents)	1840	1599	-241	-13.1	-	-	-	-	-	-	-
All Crime (excl. Action (NFIB) Fraud)	3291	3602	311	9.5	749	880	131	17.5	22.8	24.4	1.7
- State Based Crime	315	514	199	63.2	153	221	68	44.4	48.6	43.0	-5.6
- Victim Based Crime	2976	3088	112	3.8	596	659	63	10.6	20.0	21.3	1.3
Victim Based Crime	Offences				Outcomes				Solved Rates %		
Crime Type	2015	2016	# diff.	% diff.	2015	2016	# diff.	% diff.	2015	2016	% pt. diff.
Violence Against the Person	1014	1182	168	16.6	279	303	24	8.6	27.5	25.6	-1.9
- Homicide	2	0	-2	-100.0	1	0	-1	-100.0	50.0	-	-
- Violence with Injury	386	485	99	25.6	114	128	14	12.3	29.5	26.4	-3.1
- Violence without Injury	626	697	71	11.3	164	175	11	6.7	26.2	25.1	-1.1
Sexual Offences	95	104	9	9.5	12	18	6	50.0	12.6	17.3	4.7
- Rape	38	37	-1	-2.6	6	4	-2	-33.3	15.8	10.8	-5.0
- Rape - Under 16 yrs	16	15	-1	-6.3	2	4	2	100.0	12.5	26.7	14.2
- Rape - Over 16 yrs	22	22	0	0.0	4	0	-4	-100.0	18.2	0.0	-18.2
- Other Sexual Offences	57	67	10	17.5	6	14	8	133.3	10.5	20.9	10.4
Robbery	27	43	16	59.3	3	6	3	100.0	11.1	14.0	2.8
- Robbery of business property	0	1	1	-	0	1	1	-	-	100.0	-
- Robbery of Personal Property	27	42	15	55.6	3	5	2	66.7	11.1	11.9	0.8
Theft Offences	1389	1262	-127	-9.1	240	261	21	8.8	17.3	20.7	3.4
- Burglary	413	311	-102	-24.7	30	24	-6	-20.0	7.3	7.7	0.5
- Dwelling Burglary	183	155	-28	-15.3	27	18	-9	-33.3	14.8	11.6	-3.1
- Other Burglary	230	156	-74	-32.2	3	6	3	100.0	1.3	3.8	2.5
- Vehicle Offences (incl. Interference)	249	207	-42	-16.9	5	14	9	180.0	2.0	6.8	4.8
- Theft from Vehicle	182	109	-73	-40.1	1	4	3	300.0	0.5	3.7	3.1
- Theft of Motor Vehicle	49	82	33	67.3	3	9	6	200.0	6.1	11.0	4.9
- Vehicle Interference	18	16	-2	-11.1	1	1	0	0.0	5.6	6.3	0.7
- Theft	727	744	17	2.3	205	223	18	8.8	28.2	30.0	1.8
- Theft from the Person	40	26	-14	-35.0	1	0	-1	-100.0	2.5	0.0	-2.5
- Theft of Pedal Cycle	37	31	-6	-16.2	4	2	-2	-50.0	10.8	6.5	-4.4
- Shoplifting	324	377	53	16.4	174	186	12	6.9	53.7	49.3	-4.4
- Other Theft	326	310	-16	-4.9	26	35	9	34.6	8.0	11.3	3.3
Criminal Damage inc. Arson	451	497	46	10.2	62	71	9	14.5	13.7	14.3	0.5
- Criminal Damage	434	476	42	9.7	62	70	8	12.9	14.3	14.7	0.4
- Arson	17	21	4	23.5	0	1	1	-	0.0	4.8	4.8
Racial/Religiously Aggravated Offences	10	26	16	160.0	3	6	3	100.0	30.0	23.1	-6.9
State Based Crime	Offences				Outcomes				Solved Rates %		
Crime Type	2015	2016	# diff.	% diff.	2015	2016	# diff.	% diff.	2015	2016	% pt. diff.
Drug Offences	79	99	20	25.3	73	90	17	23.3	92.4	90.9	-1.5
- Trafficking of Drugs	20	26	6	30.0	20	23	3	15.0	100.0	88.5	-11.5
- Possession of Drugs	59	73	14	23.7	53	67	14	26.4	89.8	91.8	2.0
Possession of Weapons	20	49	29	145.0	12	29	17	141.7	60.0	59.2	-0.8
Public Order	155	284	129	83.2	52	82	30	57.7	33.5	28.9	-4.7
Miscellaneous Crimes against Society	61	82	21	34.4	16	20	4	25.0	26.2	24.4	-1.8

Corporate Services: Performance Summary
Essex Police Performance Summary

Trending
Rolling 12 Months to July

Top Level	Offences				Outcomes				Solved Rates %		
Crime Type	2015	2016	# diff.	% diff.	2015	2016	# diff.	% diff.	2015	2016	% pt. diff.
Anti-Social Behaviour (incidents)	4821	4422	-399	-8.3	-	-	-	-	-	-	-
All Crime (excl. Action (NFIB) Fraud)	9238	10249	1011	10.9	2550	2577	27	1.1	27.6	25.1	-2.5
- State Based Crime	857	1168	311	36.3	507	542	35	6.9	59.2	46.4	-12.8
- Victim Based Crime	8381	9081	700	8.4	2043	2035	-8	-0.4	24.4	22.4	-2.0
Victim Based Crime	Offences				Outcomes				Solved Rates %		
Crime Type	2015	2016	# diff.	% diff.	2015	2016	# diff.	% diff.	2015	2016	% pt. diff.
Violence Against the Person	2660	3301	641	24.1	905	935	30	3.3	34.0	28.3	-5.7
- Homicide	3	3	0	0.0	1	2	1	100.0	33.3	66.7	33.3
- Violence with Injury	1090	1346	256	23.5	389	401	12	3.1	35.7	29.8	-5.9
- Violence without Injury	1567	1952	385	24.6	515	532	17	3.3	32.9	27.3	-5.6
Sexual Offences	274	296	22	8.0	44	43	-1	-2.3	16.1	14.5	-1.5
- Rape	96	90	-6	-6.3	13	8	-5	-38.5	13.5	8.9	-4.7
- Rape - Under 16 yrs	35	28	-7	-20.0	5	6	1	20.0	14.3	21.4	7.1
- Rape - Over 16 yrs	61	62	1	1.6	8	2	-6	-75.0	13.1	3.2	-9.9
- Other Sexual Offences	178	206	28	15.7	31	35	4	12.9	17.4	17.0	-0.4
Robbery	77	89	12	15.6	12	18	6	50.0	15.6	20.2	4.6
- Robbery of business property	2	5	3	150.0	0	3	3	-	0.0	60.0	60.0
- Robbery of Personal Property	75	84	9	12.0	12	15	3	25.0	16.0	17.9	1.9
Theft Offences	4025	4021	-4	-0.1	881	802	-79	-9.0	21.9	19.9	-1.9
- Burglary	1102	1091	-11	-1.0	141	121	-20	-14.2	12.8	11.1	-1.7
- Dwelling Burglary	474	487	13	2.7	84	76	-8	-9.5	17.7	15.6	-2.1
- Other Burglary	628	604	-24	-3.8	57	45	-12	-21.1	9.1	7.5	-1.6
- Vehicle Offences (incl. Interference)	684	702	18	2.6	38	45	7	18.4	5.6	6.4	0.9
- Theft from Vehicle	467	442	-25	-5.4	10	8	-2	-20.0	2.1	1.8	-0.3
- Theft of Motor Vehicle	161	193	32	19.9	26	32	6	23.1	16.1	16.6	0.4
- Vehicle Interference	56	67	11	19.6	2	5	3	150.0	3.6	7.5	3.9
- Theft	2239	2228	-11	-0.5	702	636	-66	-9.4	31.4	28.5	-2.8
- Theft from the Person	90	110	20	22.2	5	4	-1	-20.0	5.6	3.6	-1.9
- Theft of Pedal Cycle	138	126	-12	-8.7	10	8	-2	-20.0	7.2	6.3	-0.9
- Shoplifting	1016	1059	43	4.2	571	517	-54	-9.5	56.2	48.8	-7.4
- Other Theft	995	933	-62	-6.2	116	107	-9	-7.8	11.7	11.5	-0.2
Criminal Damage inc. Arson	1345	1374	29	2.2	201	237	36	17.9	14.9	17.2	2.3
- Criminal Damage	1286	1326	40	3.1	196	234	38	19.4	15.2	17.6	2.4
- Arson	59	48	-11	-18.6	5	3	-2	-40.0	8.5	6.3	-2.2
Racial/Religiously Aggravated Offences	50	51	1	2.0	21	16	-5	-23.8	42.0	31.4	-10.6
State Based Crime	Offences				Outcomes				Solved Rates %		
Crime Type	2015	2016	# diff.	% diff.	2015	2016	# diff.	% diff.	2015	2016	% pt. diff.
Drug Offences	279	243	-36	-12.9	266	225	-41	-15.4	95.3	92.6	-2.7
- Trafficking of Drugs	65	60	-5	-7.7	56	50	-6	-10.7	86.2	83.3	-2.8
- Possession of Drugs	214	183	-31	-14.5	210	175	-35	-16.7	98.1	95.6	-2.5
Possession of Weapons	58	99	41	70.7	38	66	28	73.7	65.5	66.7	1.1
Public Order	388	622	234	60.3	153	188	35	22.9	39.4	30.2	-9.2
Miscellaneous Crimes against Society	132	204	72	54.5	50	63	13	26.0	37.9	30.9	-7.0

Corporate Services: Performance Summary

Essex Police Performance Summary

Southend

Cumulative Year to July

Top Level	Offences				Outcomes				Solved Rates %		
Crime Type	2015	2016	# diff.	% diff.	2015	2016	# diff.	% diff.	2015	2016	% pt. diff.
Anti-Social Behaviour (incidents)	2644	2546	-98	-3.7	-	-	-	-	-	-	-
All Crime (excl. Action (NFIB) Fraud)	4502	5066	564	12.5	892	1075	183	20.5	19.8	21.2	1.4
- State Based Crime	474	697	223	47.0	199	294	95	47.7	42.0	42.2	0.2
- Victim Based Crime	4028	4369	341	8.5	693	781	88	12.7	17.2	17.9	0.7
Victim Based Crime	Offences				Outcomes				Solved Rates %		
Crime Type	2015	2016	# diff.	% diff.	2015	2016	# diff.	% diff.	2015	2016	% pt. diff.
Violence Against the Person	1231	1428	197	16.0	316	373	57	18.0	25.7	26.1	0.5
- Homicide	2	1	-1	-50.0	2	1	-1	-50.0	100.0	100.0	0.0
- Violence with Injury	506	559	53	10.5	150	162	12	8.0	29.6	29.0	-0.7
- Violence without Injury	723	868	145	20.1	164	210	46	28.0	22.7	24.2	1.5
Sexual Offences	94	132	38	40.4	14	15	1	7.1	14.9	11.4	-3.5
- Rape	37	49	12	32.4	6	5	-1	-16.7	16.2	10.2	-6.0
- Rape - Under 16 yrs	15	13	-2	-13.3	5	2	-3	-60.0	33.3	15.4	-17.9
- Rape - Over 16 yrs	22	36	14	63.6	1	3	2	200.0	4.5	8.3	3.8
- Other Sexual Offences	57	83	26	45.6	8	10	2	25.0	14.0	12.0	-2.0
Robbery	49	60	11	22.4	7	6	-1	-14.3	14.3	10.0	-4.3
- Robbery of business property	0	5	5	-	1	2	1	100.0	-	40.0	-
- Robbery of Personal Property	49	55	6	12.2	6	4	-2	-33.3	12.2	7.3	-5.0
Theft Offences	2020	2146	126	6.2	257	278	21	8.2	12.7	13.0	0.2
- Burglary	435	412	-23	-5.3	29	40	11	37.9	6.7	9.7	3.0
- Dwelling Burglary	260	228	-32	-12.3	23	11	-12	-52.2	8.8	4.8	-4.0
- Other Burglary	175	184	9	5.1	6	29	23	383.3	3.4	15.8	12.3
- Vehicle Offences (incl. Interference)	518	449	-69	-13.3	20	14	-6	-30.0	3.9	3.1	-0.7
- Theft from Vehicle	362	278	-84	-23.2	7	4	-3	-42.9	1.9	1.4	-0.5
- Theft of Motor Vehicle	113	126	13	11.5	13	8	-5	-38.5	11.5	6.3	-5.2
- Vehicle Interference	43	45	2	4.7	0	2	2	-	0.0	4.4	4.4
- Theft	1067	1285	218	20.4	208	224	16	7.7	19.5	17.4	-2.1
- Theft from the Person	70	87	17	24.3	4	4	0	0.0	5.7	4.6	-1.1
- Theft of Pedal Cycle	107	160	53	49.5	3	4	1	33.3	2.8	2.5	-0.3
- Shoplifting	387	489	102	26.4	173	163	-10	-5.8	44.7	33.3	-11.4
- Other Theft	503	549	46	9.1	28	53	25	89.3	5.6	9.7	4.1
Criminal Damage inc. Arson	634	603	-31	-4.9	99	109	10	10.1	15.6	18.1	2.5
- Criminal Damage	623	586	-37	-5.9	96	106	10	10.4	15.4	18.1	2.7
- Arson	11	17	6	54.5	3	3	0	0.0	27.3	17.6	-9.6
Racial/Religiously Aggravated Offences	37	56	19	51.4	8	6	-2	-25.0	21.6	10.7	-10.9
State Based Crime	Offences				Outcomes				Solved Rates %		
Crime Type	2015	2016	# diff.	% diff.	2015	2016	# diff.	% diff.	2015	2016	% pt. diff.
Drug Offences	119	139	20	16.8	96	114	18	18.8	80.7	82.0	1.3
- Trafficking of Drugs	46	30	-16	-34.8	25	19	-6	-24.0	54.3	63.3	9.0
- Possession of Drugs	73	109	36	49.3	71	95	24	33.8	97.3	87.2	-10.1
Possession of Weapons	36	41	5	13.9	14	35	21	150.0	38.9	85.4	46.5
Public Order	248	438	190	76.6	68	110	42	61.8	27.4	25.1	-2.3
Miscellaneous Crimes against Society	71	79	8	11.3	21	35	14	66.7	29.6	44.3	14.7

Corporate Services: Performance Summary
Essex Police Performance Summary

Southend

Rolling 12 Months to July

Top Level	Offences				Outcomes				Solved Rates %		
Crime Type	2015	2016	# diff.	% diff.	2015	2016	# diff.	% diff.	2015	2016	% pt. diff.
Anti-Social Behaviour (incidents)	7713	7256	-457	-5.9	-	-	-	-	-	-	-
All Crime (excl. Action (NFIB) Fraud)	12890	14814	1924	14.9	3340	3286	-54	-1.6	25.9	22.2	-3.7
- State Based Crime	1418	1740	322	22.7	934	824	-110	-11.8	65.9	47.4	-18.5
- Victim Based Crime	11472	13074	1602	14.0	2406	2462	56	2.3	21.0	18.8	-2.1
Victim Based Crime	Offences				Outcomes				Solved Rates %		
Crime Type	2015	2016	# diff.	% diff.	2015	2016	# diff.	% diff.	2015	2016	% pt. diff.
Violence Against the Person	3296	4249	953	28.9	1061	1138	77	7.3	32.2	26.8	-5.4
- Homicide	3	3	0	0.0	3	3	0	0.0	100.0	100.0	0.0
- Violence with Injury	1431	1663	232	16.2	504	512	8	1.6	35.2	30.8	-4.4
- Violence without Injury	1862	2583	721	38.7	554	623	69	12.5	29.8	24.1	-5.6
Sexual Offences	316	376	60	19.0	51	57	6	11.8	16.1	15.2	-1.0
- Rape	118	153	35	29.7	23	13	-10	-43.5	19.5	8.5	-11.0
- Rape - Under 16 yrs	37	40	3	8.1	12	4	-8	-66.7	32.4	10.0	-22.4
- Rape - Over 16 yrs	81	113	32	39.5	11	9	-2	-18.2	13.6	8.0	-5.6
- Other Sexual Offences	198	223	25	12.6	28	44	16	57.1	14.1	19.7	5.6
Robbery	152	190	38	25.0	26	24	-2	-7.7	17.1	12.6	-4.5
- Robbery of business property	6	18	12	200.0	2	8	6	300.0	33.3	44.4	11.1
- Robbery of Personal Property	146	172	26	17.8	24	16	-8	-33.3	16.4	9.3	-7.1
Theft Offences	5919	6296	377	6.4	995	916	-79	-7.9	16.8	14.5	-2.3
- Burglary	1312	1326	14	1.1	115	120	5	4.3	8.8	9.0	0.3
- Dwelling Burglary	804	808	4	0.5	81	60	-21	-25.9	10.1	7.4	-2.6
- Other Burglary	508	518	10	2.0	34	60	26	76.5	6.7	11.6	4.9
- Vehicle Offences (incl. Interference)	1549	1484	-65	-4.2	84	71	-13	-15.5	5.4	4.8	-0.6
- Theft from Vehicle	1069	967	-102	-9.5	29	28	-1	-3.4	2.7	2.9	0.2
- Theft of Motor Vehicle	333	344	11	3.3	50	37	-13	-26.0	15.0	10.8	-4.3
- Vehicle Interference	147	173	26	17.7	5	6	1	20.0	3.4	3.5	0.1
- Theft	3058	3486	428	14.0	796	725	-71	-8.9	26.0	20.8	-5.2
- Theft from the Person	216	257	41	19.0	5	9	4	80.0	2.3	3.5	1.2
- Theft of Pedal Cycle	310	419	109	35.2	14	11	-3	-21.4	4.5	2.6	-1.9
- Shoplifting	1092	1304	212	19.4	642	515	-127	-19.8	58.8	39.5	-19.3
- Other Theft	1440	1506	66	4.6	135	190	55	40.7	9.4	12.6	3.2
Criminal Damage inc. Arson	1789	1963	174	9.7	273	327	54	19.8	15.3	16.7	1.4
- Criminal Damage	1743	1906	163	9.4	264	322	58	22.0	15.1	16.9	1.7
- Arson	46	57	11	23.9	9	5	-4	-44.4	19.6	8.8	-10.8
Racial/Religiously Aggravated Offences	116	143	27	23.3	44	29	-15	-34.1	37.9	20.3	-17.7
State Based Crime	Offences				Outcomes				Solved Rates %		
Crime Type	2015	2016	# diff.	% diff.	2015	2016	# diff.	% diff.	2015	2016	% pt. diff.
Drug Offences	510	343	-167	-32.7	501	310	-191	-38.1	98.2	90.4	-7.9
- Trafficking of Drugs	161	68	-93	-57.8	139	59	-80	-57.6	86.3	86.8	0.4
- Possession of Drugs	349	275	-74	-21.2	362	251	-111	-30.7	103.7	91.3	-12.5
Possession of Weapons	87	133	46	52.9	57	100	43	75.4	65.5	75.2	9.7
Public Order	618	1047	429	69.4	272	324	52	19.1	44.0	30.9	-13.1
Miscellaneous Crimes against Society	203	217	14	6.9	104	90	-14	-13.5	51.2	41.5	-9.8

Corporate Services: Performance Summary
Essex Police Performance Summary

Castle Point
Cumulative Year to July

Top Level	Offences				Outcomes				Solved Rates %		
Crime Type	2015	2016	# diff.	% diff.	2015	2016	# diff.	% diff.	2015	2016	% pt. diff.
Anti-Social Behaviour (incidents)	791	662	-129	-16.3	-	-	-	-	-	-	-
All Crime (excl. Action (NFIB) Fraud)	1326	1418	92	6.9	255	278	23	9.0	19.2	19.6	0.4
- State Based Crime	116	180	64	55.2	50	83	33	66.0	43.1	46.1	3.0
- Victim Based Crime	1210	1238	28	2.3	205	195	-10	-4.9	16.9	15.8	-1.2
Victim Based Crime	Offences				Outcomes				Solved Rates %		
Crime Type	2015	2016	# diff.	% diff.	2015	2016	# diff.	% diff.	2015	2016	% pt. diff.
Violence Against the Person	321	425	104	32.4	92	94	2	2.2	28.7	22.1	-6.5
- Homicide	0	0	0	-	0	0	0	-	-	-	-
- Violence with Injury	146	157	11	7.5	47	27	-20	-42.6	32.2	17.2	-15.0
- Violence without Injury	175	268	93	53.1	45	67	22	48.9	25.7	25.0	-0.7
Sexual Offences	32	35	3	9.4	16	0	-16	-100.0	50.0	0.0	-50.0
- Rape	12	14	2	16.7	1	0	-1	-100.0	8.3	0.0	-8.3
- Rape - Under 16 yrs	7	2	-5	-71.4	0	0	0	-	0.0	0.0	0.0
- Rape - Over 16 yrs	5	12	7	140.0	1	0	-1	-100.0	20.0	0.0	-20.0
- Other Sexual Offences	20	21	1	5.0	15	0	-15	-100.0	75.0	0.0	-75.0
Robbery	15	24	9	60.0	5	2	-3	-60.0	33.3	8.3	-25.0
- Robbery of business property	0	7	7	-	2	0	-2	-100.0	-	0.0	-
- Robbery of Personal Property	15	17	2	13.3	3	2	-1	-33.3	20.0	11.8	-8.2
Theft Offences	659	599	-60	-9.1	63	70	7	11.1	9.6	11.7	2.1
- Burglary	245	209	-36	-14.7	8	9	1	12.5	3.3	4.3	1.0
- Dwelling Burglary	137	119	-18	-13.1	5	6	1	20.0	3.6	5.0	1.4
- Other Burglary	108	90	-18	-16.7	3	3	0	0.0	2.8	3.3	0.6
- Vehicle Offences (incl. Interference)	154	140	-14	-9.1	6	4	-2	-33.3	3.9	2.9	-1.0
- Theft from Vehicle	92	68	-24	-26.1	5	0	-5	-100.0	5.4	0.0	-5.4
- Theft of Motor Vehicle	50	55	5	10.0	1	4	3	300.0	2.0	7.3	5.3
- Vehicle Interference	12	17	5	41.7	0	0	0	-	0.0	0.0	0.0
- Theft	260	250	-10	-3.8	49	57	8	16.3	18.8	22.8	4.0
- Theft from the Person	15	14	-1	-6.7	2	3	1	50.0	13.3	21.4	8.1
- Theft of Pedal Cycle	17	22	5	29.4	1	1	0	0.0	5.9	4.5	-1.3
- Shoplifting	71	78	7	9.9	30	34	4	13.3	42.3	43.6	1.3
- Other Theft	157	136	-21	-13.4	16	19	3	18.8	10.2	14.0	3.8
Criminal Damage inc. Arson	183	155	-28	-15.3	29	29	0	0.0	15.8	18.7	2.9
- Criminal Damage	176	151	-25	-14.2	28	28	0	0.0	15.9	18.5	2.6
- Arson	7	4	-3	-42.9	1	1	0	0.0	14.3	25.0	10.7
Racial/Religiously Aggravated Offences	8	8	0	0.0	2	6	4	200.0	25.0	75.0	50.0
State Based Crime	Offences				Outcomes				Solved Rates %		
Crime Type	2015	2016	# diff.	% diff.	2015	2016	# diff.	% diff.	2015	2016	% pt. diff.
Drug Offences	30	30	0	0.0	27	31	4	14.8	90.0	103.3	13.3
- Trafficking of Drugs	6	5	-1	-16.7	5	3	-2	-40.0	83.3	60.0	-23.3
- Possession of Drugs	24	25	1	4.2	22	28	6	27.3	91.7	112.0	20.3
Possession of Weapons	6	14	8	133.3	2	11	9	450.0	33.3	78.6	45.2
Public Order	66	107	41	62.1	17	34	17	100.0	25.8	31.8	6.0
Miscellaneous Crimes against Society	14	29	15	107.1	4	7	3	75.0	28.6	24.1	-4.4

Corporate Services: Performance Summary
Essex Police Performance Summary

Castle Point
Rolling 12 Months to July

Top Level	Offences				Outcomes				Solved Rates %		
Crime Type	2015	2016	# diff.	% diff.	2015	2016	# diff.	% diff.	2015	2016	% pt. diff.
Anti-Social Behaviour (incidents)	2251	1822	-429	-19.1	-	-	-	-	-	-	-
All Crime (excl. Action (NFIB) Fraud)	3461	4064	603	17.4	810	797	-13	-1.6	23.4	19.6	-3.8
- State Based Crime	329	490	161	48.9	184	225	41	22.3	55.9	45.9	-10.0
- Victim Based Crime	3132	3574	442	14.1	626	572	-54	-8.6	20.0	16.0	-4.0
Victim Based Crime	Offences				Outcomes				Solved Rates %		
Crime Type	2015	2016	# diff.	% diff.	2015	2016	# diff.	% diff.	2015	2016	% pt. diff.
Violence Against the Person	844	1207	363	43.0	260	268	8	3.1	30.8	22.2	-8.6
- Homicide	0	1	1	-	0	0	0	-	-	0.0	-
- Violence with Injury	397	447	50	12.6	125	98	-27	-21.6	31.5	21.9	-9.6
- Violence without Injury	447	759	312	69.8	135	170	35	25.9	30.2	22.4	-7.8
Sexual Offences	100	96	-4	-4.0	33	10	-23	-69.7	33.0	10.4	-22.6
- Rape	24	34	10	41.7	8	3	-5	-62.5	33.3	8.8	-24.5
- Rape - Under 16 yrs	8	11	3	37.5	4	2	-2	-50.0	50.0	18.2	-31.8
- Rape - Over 16 yrs	16	23	7	43.8	4	1	-3	-75.0	25.0	4.3	-20.7
- Other Sexual Offences	76	62	-14	-18.4	25	7	-18	-72.0	32.9	11.3	-21.6
Robbery	34	54	20	58.8	6	8	2	33.3	17.6	14.8	-2.8
- Robbery of business property	8	22	14	175.0	3	3	0	0.0	37.5	13.6	-23.9
- Robbery of Personal Property	26	32	6	23.1	3	5	2	66.7	11.5	15.6	4.1
Theft Offences	1681	1697	16	1.0	262	204	-58	-22.1	15.6	12.0	-3.6
- Burglary	611	632	21	3.4	46	38	-8	-17.4	7.5	6.0	-1.5
- Dwelling Burglary	380	302	-78	-20.5	38	21	-17	-44.7	10.0	7.0	-3.0
- Other Burglary	231	330	99	42.9	8	17	9	112.5	3.5	5.2	1.7
- Vehicle Offences (incl. Interference)	402	369	-33	-8.2	52	27	-25	-48.1	12.9	7.3	-5.6
- Theft from Vehicle	237	186	-51	-21.5	45	4	-41	-91.1	19.0	2.2	-16.8
- Theft of Motor Vehicle	123	140	17	13.8	6	23	17	283.3	4.9	16.4	11.6
- Vehicle Interference	42	43	1	2.4	1	0	-1	-100.0	2.4	0.0	-2.4
- Theft	668	696	28	4.2	164	139	-25	-15.2	24.6	20.0	-4.6
- Theft from the Person	30	41	11	36.7	2	3	1	50.0	6.7	7.3	0.7
- Theft of Pedal Cycle	73	60	-13	-17.8	12	2	-10	-83.3	16.4	3.3	-13.1
- Shoplifting	160	199	39	24.4	74	79	5	6.8	46.3	39.7	-6.6
- Other Theft	405	396	-9	-2.2	76	55	-21	-27.6	18.8	13.9	-4.9
Criminal Damage inc. Arson	473	520	47	9.9	65	82	17	26.2	13.7	15.8	2.0
- Criminal Damage	456	501	45	9.9	61	81	20	32.8	13.4	16.2	2.8
- Arson	17	19	2	11.8	4	1	-3	-75.0	23.5	5.3	-18.3
Racial/Religiously Aggravated Offences	16	29	13	81.3	5	10	5	100.0	31.3	34.5	3.2
State Based Crime	Offences				Outcomes				Solved Rates %		
Crime Type	2015	2016	# diff.	% diff.	2015	2016	# diff.	% diff.	2015	2016	% pt. diff.
Drug Offences	102	105	3	2.9	101	96	-5	-5.0	99.0	91.4	-7.6
- Trafficking of Drugs	13	14	1	7.7	12	6	-6	-50.0	92.3	42.9	-49.5
- Possession of Drugs	89	91	2	2.2	89	90	1	1.1	100.0	98.9	-1.1
Possession of Weapons	24	33	9	37.5	16	23	7	43.8	66.7	69.7	3.0
Public Order	158	278	120	75.9	53	87	34	64.2	33.5	31.3	-2.2
Miscellaneous Crimes against Society	45	74	29	64.4	14	19	5	35.7	31.1	25.7	-5.4

Corporate Services: Performance Summary
Essex Police Performance Summary

Rochford
Cumulative Year to July

Top Level	Offences				Outcomes				Solved Rates %		
Crime Type	2015	2016	# diff.	% diff.	2015	2016	# diff.	% diff.	2015	2016	% pt. diff.
Anti-Social Behaviour (incidents)	599	571	-28	-4.7	-	-	-	-	-	-	-
All Crime (excl. Action (NFIB) Fraud)	1013	1075	62	6.1	177	232	55	31.1	17.5	21.6	4.1
- State Based Crime	73	122	49	67.1	39	54	15	38.5	53.4	44.3	-9.2
- Victim Based Crime	940	953	13	1.4	138	178	40	29.0	14.7	18.7	4.0
Victim Based Crime	Offences				Outcomes				Solved Rates %		
Crime Type	2015	2016	# diff.	% diff.	2015	2016	# diff.	% diff.	2015	2016	% pt. diff.
Violence Against the Person	240	334	94	39.2	52	84	32	61.5	21.7	25.1	3.5
- Homicide	0	0	0	-	1	0	-1	-100.0	-	-	-
- Violence with Injury	101	120	19	18.8	28	35	7	25.0	27.7	29.2	1.4
- Violence without Injury	139	214	75	54.0	23	49	26	113.0	16.5	22.9	6.4
Sexual Offences	20	26	6	30.0	3	0	-3	-100.0	15.0	0.0	-15.0
- Rape	7	12	5	71.4	1	0	-1	-100.0	14.3	0.0	-14.3
- Rape - Under 16 yrs	2	3	1	50.0	0	0	0	-	0.0	0.0	0.0
- Rape - Over 16 yrs	5	9	4	80.0	1	0	-1	-100.0	20.0	0.0	-20.0
- Other Sexual Offences	13	14	1	7.7	2	0	-2	-100.0	15.4	0.0	-15.4
Robbery	9	6	-3	-33.3	4	0	-4	-100.0	44.4	0.0	-44.4
- Robbery of business property	0	1	1	-	0	0	0	-	-	0.0	-
- Robbery of Personal Property	9	5	-4	-44.4	4	0	-4	-100.0	44.4	0.0	-44.4
Theft Offences	516	427	-89	-17.2	65	77	12	18.5	12.6	18.0	5.4
- Burglary	153	130	-23	-15.0	2	3	1	50.0	1.3	2.3	1.0
- Dwelling Burglary	87	78	-9	-10.3	0	2	2	-	0.0	2.6	2.6
- Other Burglary	66	52	-14	-21.2	2	1	-1	-50.0	3.0	1.9	-1.1
- Vehicle Offences (incl. Interference)	115	84	-31	-27.0	4	3	-1	-25.0	3.5	3.6	0.1
- Theft from Vehicle	62	47	-15	-24.2	0	1	1	-	0.0	2.1	2.1
- Theft of Motor Vehicle	48	30	-18	-37.5	4	2	-2	-50.0	8.3	6.7	-1.7
- Vehicle Interference	5	7	2	40.0	0	0	0	-	0.0	0.0	0.0
- Theft	248	213	-35	-14.1	59	71	12	20.3	23.8	33.3	9.5
- Theft from the Person	9	9	0	0.0	0	1	1	-	0.0	11.1	11.1
- Theft of Pedal Cycle	16	8	-8	-50.0	0	1	1	-	0.0	12.5	12.5
- Shoplifting	121	97	-24	-19.8	53	59	6	11.3	43.8	60.8	17.0
- Other Theft	102	99	-3	-2.9	6	10	4	66.7	5.9	10.1	4.2
Criminal Damage inc. Arson	155	160	5	3.2	14	17	3	21.4	9.0	10.6	1.6
- Criminal Damage	150	153	3	2.0	13	17	4	30.8	8.7	11.1	2.4
- Arson	5	7	2	40.0	1	0	-1	-100.0	20.0	0.0	-20.0
Racial/Religiously Aggravated Offences	5	4	-1	-20.0	0	0	0	-	0.0	0.0	0.0
State Based Crime	Offences				Outcomes				Solved Rates %		
Crime Type	2015	2016	# diff.	% diff.	2015	2016	# diff.	% diff.	2015	2016	% pt. diff.
Drug Offences	19	35	16	84.2	21	31	10	47.6	110.5	88.6	-22.0
- Trafficking of Drugs	3	7	4	133.3	3	4	1	33.3	100.0	57.1	-42.9
- Possession of Drugs	16	28	12	75.0	18	27	9	50.0	112.5	96.4	-16.1
Possession of Weapons	7	5	-2	-28.6	4	4	0	0.0	57.1	80.0	22.9
Public Order	38	71	33	86.8	11	15	4	36.4	28.9	21.1	-7.8
Miscellaneous Crimes against Society	9	11	2	22.2	3	4	1	33.3	33.3	36.4	3.0

Corporate Services: Performance Summary
Essex Police Performance Summary

Rochford

Rolling 12 Months to July

Top Level	Offences				Outcomes				Solved Rates %		
Crime Type	2015	2016	# diff.	% diff.	2015	2016	# diff.	% diff.	2015	2016	% pt. diff.
Anti-Social Behaviour (incidents)	1710	1596	-114	-6.7	-	-	-	-	-	-	-
All Crime (excl. Action (NFIB) Fraud)	2790	3223	433	15.5	673	652	-21	-3.1	24.1	20.2	-3.9
- State Based Crime	211	320	109	51.7	137	131	-6	-4.4	64.9	40.9	-24.0
- Victim Based Crime	2579	2903	324	12.6	536	521	-15	-2.8	20.8	17.9	-2.8
Victim Based Crime	Offences				Outcomes				Solved Rates %		
Crime Type	2015	2016	# diff.	% diff.	2015	2016	# diff.	% diff.	2015	2016	% pt. diff.
Violence Against the Person	657	939	282	42.9	211	220	9	4.3	32.1	23.4	-8.7
- Homicide	1	0	-1	-100.0	1	0	-1	-100.0	100.0	-	-
- Violence with Injury	299	340	41	13.7	112	94	-18	-16.1	37.5	27.6	-9.8
- Violence without Injury	357	599	242	67.8	98	126	28	28.6	27.5	21.0	-6.4
Sexual Offences	70	89	19	27.1	20	13	-7	-35.0	28.6	14.6	-14.0
- Rape	28	37	9	32.1	4	3	-1	-25.0	14.3	8.1	-6.2
- Rape - Under 16 yrs	9	15	6	66.7	0	1	1	-	0.0	6.7	6.7
- Rape - Over 16 yrs	19	22	3	15.8	4	2	-2	-50.0	21.1	9.1	-12.0
- Other Sexual Offences	42	52	10	23.8	16	10	-6	-37.5	38.1	19.2	-18.9
Robbery	20	17	-3	-15.0	6	1	-5	-83.3	30.0	5.9	-24.1
- Robbery of business property	3	3	0	0.0	1	0	-1	-100.0	33.3	0.0	-33.3
- Robbery of Personal Property	17	14	-3	-17.6	5	1	-4	-80.0	29.4	7.1	-22.3
Theft Offences	1396	1351	-45	-3.2	242	236	-6	-2.5	17.3	17.5	0.1
- Burglary	396	422	26	6.6	16	19	3	18.8	4.0	4.5	0.5
- Dwelling Burglary	240	254	14	5.8	8	12	4	50.0	3.3	4.7	1.4
- Other Burglary	156	168	12	7.7	8	7	-1	-12.5	5.1	4.2	-1.0
- Vehicle Offences (incl. Interference)	304	276	-28	-9.2	13	8	-5	-38.5	4.3	2.9	-1.4
- Theft from Vehicle	173	166	-7	-4.0	2	2	0	0.0	1.2	1.2	0.0
- Theft of Motor Vehicle	112	84	-28	-25.0	10	6	-4	-40.0	8.9	7.1	-1.8
- Vehicle Interference	19	26	7	36.8	1	0	-1	-100.0	5.3	0.0	-5.3
- Theft	696	653	-43	-6.2	213	209	-4	-1.9	30.6	32.0	1.4
- Theft from the Person	37	38	1	2.7	0	2	2	-	0.0	5.3	5.3
- Theft of Pedal Cycle	35	51	16	45.7	1	5	4	400.0	2.9	9.8	6.9
- Shoplifting	302	279	-23	-7.6	180	172	-8	-4.4	59.6	61.6	2.0
- Other Theft	322	285	-37	-11.5	32	30	-2	-6.3	9.9	10.5	0.6
Criminal Damage inc. Arson	436	507	71	16.3	57	51	-6	-10.5	13.1	10.1	-3.0
- Criminal Damage	422	491	69	16.4	55	51	-4	-7.3	13.0	10.4	-2.6
- Arson	14	16	2	14.3	2	0	-2	-100.0	14.3	0.0	-14.3
Racial/Religiously Aggravated Offences	13	12	-1	-7.7	4	6	2	50.0	30.8	50.0	19.2
State Based Crime	Offences				Outcomes				Solved Rates %		
Crime Type	2015	2016	# diff.	% diff.	2015	2016	# diff.	% diff.	2015	2016	% pt. diff.
Drug Offences	74	71	-3	-4.1	73	63	-10	-13.7	98.6	88.7	-9.9
- Trafficking of Drugs	11	13	2	18.2	12	8	-4	-33.3	109.1	61.5	-47.6
- Possession of Drugs	63	58	-5	-7.9	61	55	-6	-9.8	96.8	94.8	-2.0
Possession of Weapons	21	24	3	14.3	16	19	3	18.8	76.2	79.2	3.0
Public Order	86	175	89	103.5	34	39	5	14.7	39.5	22.3	-17.2
Miscellaneous Crimes against Society	30	50	20	66.7	14	10	-4	-28.6	46.7	20.0	-26.7

Corporate Services: Performance Summary
Essex Police Performance Summary

Basildon
Cumulative Year to July

Top Level	Offences				Outcomes				Solved Rates %		
Crime Type	2015	2016	# diff.	% diff.	2015	2016	# diff.	% diff.	2015	2016	% pt. diff.
Anti-Social Behaviour (incidents)	2293	2458	165	7.2	-	-	-	-	-	-	-
All Crime (excl. Action (NFIB) Fraud)	4624	4986	362	7.8	820	923	103	12.6	17.7	18.5	0.8
- State Based Crime	393	582	189	48.1	187	249	62	33.2	47.6	42.8	-4.8
- Victim Based Crime	4231	4404	173	4.1	633	674	41	6.5	15.0	15.3	0.3
Victim Based Crime	Offences				Outcomes				Solved Rates %		
Crime Type	2015	2016	# diff.	% diff.	2015	2016	# diff.	% diff.	2015	2016	% pt. diff.
Violence Against the Person	1076	1274	198	18.4	237	294	57	24.1	22.0	23.1	1.1
- Homicide	1	1	0	0.0	1	1	0	0.0	100.0	100.0	0.0
- Violence with Injury	432	493	61	14.1	101	131	30	29.7	23.4	26.6	3.2
- Violence without Injury	643	780	137	21.3	135	162	27	20.0	21.0	20.8	-0.2
Sexual Offences	107	92	-15	-14.0	11	15	4	36.4	10.3	16.3	6.0
- Rape	34	32	-2	-5.9	2	1	-1	-50.0	5.9	3.1	-2.8
- Rape - Under 16 yrs	16	15	-1	-6.3	2	0	-2	-100.0	12.5	0.0	-12.5
- Rape - Over 16 yrs	18	17	-1	-5.6	0	1	1	-	0.0	5.9	5.9
- Other Sexual Offences	73	60	-13	-17.8	9	14	5	55.6	12.3	23.3	11.0
Robbery	67	44	-23	-34.3	8	7	-1	-12.5	11.9	15.9	4.0
- Robbery of business property	0	7	7	-	0	3	3	-	-	42.9	-
- Robbery of Personal Property	67	37	-30	-44.8	8	4	-4	-50.0	11.9	10.8	-1.1
Theft Offences	2267	2291	24	1.1	315	278	-37	-11.7	13.9	12.1	-1.8
- Burglary	644	729	85	13.2	30	46	16	53.3	4.7	6.3	1.7
- Dwelling Burglary	407	446	39	9.6	25	29	4	16.0	6.1	6.5	0.4
- Other Burglary	237	283	46	19.4	5	17	12	240.0	2.1	6.0	3.9
- Vehicle Offences (incl. Interference)	725	601	-124	-17.1	14	15	1	7.1	1.9	2.5	0.6
- Theft from Vehicle	449	364	-85	-18.9	3	3	0	0.0	0.7	0.8	0.2
- Theft of Motor Vehicle	182	163	-19	-10.4	11	12	1	9.1	6.0	7.4	1.3
- Vehicle Interference	94	74	-20	-21.3	0	0	0	-	0.0	0.0	0.0
- Theft	898	961	63	7.0	271	217	-54	-19.9	30.2	22.6	-7.6
- Theft from the Person	55	50	-5	-9.1	0	3	3	-	0.0	6.0	6.0
- Theft of Pedal Cycle	55	47	-8	-14.5	1	4	3	300.0	1.8	8.5	6.7
- Shoplifting	397	383	-14	-3.5	238	159	-79	-33.2	59.9	41.5	-18.4
- Other Theft	391	481	90	23.0	32	51	19	59.4	8.2	10.6	2.4
Criminal Damage inc. Arson	714	703	-11	-1.5	62	80	18	29.0	8.7	11.4	2.7
- Criminal Damage	698	678	-20	-2.9	61	77	16	26.2	8.7	11.4	2.6
- Arson	16	25	9	56.3	1	3	2	200.0	6.3	12.0	5.8
Racial/Religiously Aggravated Offences	26	39	13	50.0	4	15	11	275.0	15.4	38.5	23.1
State Based Crime	Offences				Outcomes				Solved Rates %		
Crime Type	2015	2016	# diff.	% diff.	2015	2016	# diff.	% diff.	2015	2016	% pt. diff.
Drug Offences	127	119	-8	-6.3	116	113	-3	-2.6	91.3	95.0	3.6
- Trafficking of Drugs	31	34	3	9.7	20	29	9	45.0	64.5	85.3	20.8
- Possession of Drugs	96	85	-11	-11.5	96	84	-12	-12.5	100.0	98.8	-1.2
Possession of Weapons	31	40	9	29.0	12	34	22	183.3	38.7	85.0	46.3
Public Order	182	330	148	81.3	44	73	29	65.9	24.2	22.1	-2.1
Miscellaneous Crimes against Society	53	93	40	75.5	15	29	14	93.3	28.3	31.2	2.9

Corporate Services: Performance Summary
Essex Police Performance Summary

Basildon

Rolling 12 Months to July

Top Level	Offences				Outcomes				Solved Rates %		
Crime Type	2015	2016	# diff.	% diff.	2015	2016	# diff.	% diff.	2015	2016	% pt. diff.
Anti-Social Behaviour (incidents)	6360	6249	-111	-1.7	-	-	-	-	-	-	-
All Crime (excl. Action (NFIB) Fraud)	12863	14637	1774	13.8	2863	2811	-52	-1.8	22.3	19.2	-3.1
- State Based Crime	1156	1553	397	34.3	725	694	-31	-4.3	62.7	44.7	-18.0
- Victim Based Crime	11707	13084	1377	11.8	2138	2117	-21	-1.0	18.3	16.2	-2.1
Victim Based Crime	Offences				Outcomes				Solved Rates %		
Crime Type	2015	2016	# diff.	% diff.	2015	2016	# diff.	% diff.	2015	2016	% pt. diff.
Violence Against the Person	2790	3681	891	31.9	767	891	124	16.2	27.5	24.2	-3.3
- Homicide	1	6	5	500.0	1	3	2	200.0	100.0	50.0	-50.0
- Violence with Injury	1226	1417	191	15.6	368	380	12	3.3	30.0	26.8	-3.2
- Violence without Injury	1563	2258	695	44.5	398	508	110	27.6	25.5	22.5	-3.0
Sexual Offences	306	325	19	6.2	55	50	-5	-9.1	18.0	15.4	-2.6
- Rape	104	118	14	13.5	13	11	-2	-15.4	12.5	9.3	-3.2
- Rape - Under 16 yrs	42	36	-6	-14.3	6	7	1	16.7	14.3	19.4	5.2
- Rape - Over 16 yrs	62	82	20	32.3	7	4	-3	-42.9	11.3	4.9	-6.4
- Other Sexual Offences	202	207	5	2.5	42	39	-3	-7.1	20.8	18.8	-2.0
Robbery	170	168	-2	-1.2	27	32	5	18.5	15.9	19.0	3.2
- Robbery of business property	13	12	-1	-7.7	4	8	4	100.0	30.8	66.7	35.9
- Robbery of Personal Property	157	156	-1	-0.6	23	24	1	4.3	14.6	15.4	0.7
Theft Offences	6671	6737	66	1.0	1091	914	-177	-16.2	16.4	13.6	-2.8
- Burglary	1954	1973	19	1.0	170	134	-36	-21.2	8.7	6.8	-1.9
- Dwelling Burglary	1159	1189	30	2.6	140	90	-50	-35.7	12.1	7.6	-4.5
- Other Burglary	795	784	-11	-1.4	30	44	14	46.7	3.8	5.6	1.8
- Vehicle Offences (incl. Interference)	2052	2018	-34	-1.7	75	71	-4	-5.3	3.7	3.5	-0.1
- Theft from Vehicle	1348	1278	-70	-5.2	31	26	-5	-16.1	2.3	2.0	-0.3
- Theft of Motor Vehicle	435	483	48	11.0	40	38	-2	-5.0	9.2	7.9	-1.3
- Vehicle Interference	269	257	-12	-4.5	4	7	3	75.0	1.5	2.7	1.2
- Theft	2665	2746	81	3.0	846	709	-137	-16.2	31.7	25.8	-5.9
- Theft from the Person	180	193	13	7.2	3	8	5	166.7	1.7	4.1	2.5
- Theft of Pedal Cycle	211	174	-37	-17.5	10	7	-3	-30.0	4.7	4.0	-0.7
- Shoplifting	1073	1097	24	2.2	680	559	-121	-17.8	63.4	51.0	-12.4
- Other Theft	1201	1282	81	6.7	153	135	-18	-11.8	12.7	10.5	-2.2
Criminal Damage inc. Arson	1770	2173	403	22.8	198	230	32	16.2	11.2	10.6	-0.6
- Criminal Damage	1725	2103	378	21.9	191	227	36	18.8	11.1	10.8	-0.3
- Arson	45	70	25	55.6	7	3	-4	-57.1	15.6	4.3	-11.3
Racial/Religiously Aggravated Offences	95	99	4	4.2	26	36	10	38.5	27.4	36.4	9.0
State Based Crime	Offences				Outcomes				Solved Rates %		
Crime Type	2015	2016	# diff.	% diff.	2015	2016	# diff.	% diff.	2015	2016	% pt. diff.
Drug Offences	469	339	-130	-27.7	445	314	-131	-29.4	94.9	92.6	-2.3
- Trafficking of Drugs	100	89	-11	-11.0	85	74	-11	-12.9	85.0	83.1	-1.9
- Possession of Drugs	369	250	-119	-32.2	360	240	-120	-33.3	97.6	96.0	-1.6
Possession of Weapons	77	111	34	44.2	46	71	25	54.3	59.7	64.0	4.2
Public Order	470	856	386	82.1	174	228	54	31.0	37.0	26.6	-10.4
Miscellaneous Crimes against Society	140	247	107	76.4	60	81	21	35.0	42.9	32.8	-10.1

Corporate Services: Performance Summary
Essex Police Performance Summary

Thurrock
Cumulative Year to July

Top Level	Offences				Outcomes				Solved Rates %		
Crime Type	2015	2016	# diff.	% diff.	2015	2016	# diff.	% diff.	2015	2016	% pt. diff.
Anti-Social Behaviour (incidents)	2121	2013	-108	-5.1	-	-	-	-	-	-	-
All Crime (excl. Action (NFIB) Fraud)	3974	4151	177	4.5	728	894	166	22.8	18.3	21.5	3.2
- State Based Crime	352	438	86	24.4	165	190	25	15.2	46.9	43.4	-3.5
- Victim Based Crime	3622	3713	91	2.5	563	704	141	25.0	15.5	19.0	3.4
Victim Based Crime	Offences				Outcomes				Solved Rates %		
Crime Type	2015	2016	# diff.	% diff.	2015	2016	# diff.	% diff.	2015	2016	% pt. diff.
Violence Against the Person	923	1131	208	22.5	247	301	54	21.9	26.8	26.6	-0.1
- Homicide	0	1	1	-	0	0	0	-	-	0.0	-
- Violence with Injury	394	436	42	10.7	120	132	12	10.0	30.5	30.3	-0.2
- Violence without Injury	529	694	165	31.2	127	169	42	33.1	24.0	24.4	0.3
Sexual Offences	79	88	9	11.4	7	11	4	57.1	8.9	12.5	3.6
- Rape	32	31	-1	-3.1	1	1	0	0.0	3.1	3.2	0.1
- Rape - Under 16 yrs	12	14	2	16.7	0	0	0	-	0.0	0.0	0.0
- Rape - Over 16 yrs	20	17	-3	-15.0	1	1	0	0.0	5.0	5.9	0.9
- Other Sexual Offences	47	57	10	21.3	6	10	4	66.7	12.8	17.5	4.8
Robbery	37	35	-2	-5.4	9	3	-6	-66.7	24.3	8.6	-15.8
- Robbery of business property	0	2	2	-	0	3	3	-	-	150.0	-
- Robbery of Personal Property	37	33	-4	-10.8	9	0	-9	-100.0	24.3	0.0	-24.3
Theft Offences	2021	1876	-145	-7.2	247	313	66	26.7	12.2	16.7	4.5
- Burglary	393	419	26	6.6	18	33	15	83.3	4.6	7.9	3.3
- Dwelling Burglary	185	224	39	21.1	13	26	13	100.0	7.0	11.6	4.6
- Other Burglary	208	195	-13	-6.3	5	7	2	40.0	2.4	3.6	1.2
- Vehicle Offences (incl. Interference)	561	514	-47	-8.4	11	18	7	63.6	2.0	3.5	1.5
- Theft from Vehicle	315	300	-15	-4.8	1	7	6	600.0	0.3	2.3	2.0
- Theft of Motor Vehicle	205	172	-33	-16.1	10	11	1	10.0	4.9	6.4	1.5
- Vehicle Interference	41	42	1	2.4	0	0	0	-	0.0	0.0	0.0
- Theft	1067	943	-124	-11.6	218	262	44	20.2	20.4	27.8	7.4
- Theft from the Person	49	55	6	12.2	0	2	2	-	0.0	3.6	3.6
- Theft of Pedal Cycle	93	49	-44	-47.3	0	4	4	-	0.0	8.2	8.2
- Shoplifting	416	420	4	1.0	181	224	43	23.8	43.5	53.3	9.8
- Other Theft	509	419	-90	-17.7	37	32	-5	-13.5	7.3	7.6	0.4
Criminal Damage inc. Arson	562	583	21	3.7	53	76	23	43.4	9.4	13.0	3.6
- Criminal Damage	524	553	29	5.5	50	76	26	52.0	9.5	13.7	4.2
- Arson	38	30	-8	-21.1	3	0	-3	-100.0	7.9	0.0	-7.9
Racial/Religiously Aggravated Offences	36	70	34	94.4	4	16	12	300.0	11.1	22.9	11.7
State Based Crime	Offences				Outcomes				Solved Rates %		
Crime Type	2015	2016	# diff.	% diff.	2015	2016	# diff.	% diff.	2015	2016	% pt. diff.
Drug Offences	94	106	12	12.8	80	88	8	10.0	85.1	83.0	-2.1
- Trafficking of Drugs	19	25	6	31.6	16	14	-2	-12.5	84.2	56.0	-28.2
- Possession of Drugs	75	81	6	8.0	64	74	10	15.6	85.3	91.4	6.0
Possession of Weapons	37	18	-19	-51.4	22	12	-10	-45.5	59.5	66.7	7.2
Public Order	160	256	96	60.0	40	64	24	60.0	25.0	25.0	0.0
Miscellaneous Crimes against Society	61	58	-3	-4.9	23	26	3	13.0	37.7	44.8	7.1

Corporate Services: Performance Summary
Essex Police Performance Summary

Thurrock
Rolling 12 Months to July

Top Level	Offences				Outcomes				Solved Rates %		
Crime Type	2015	2016	# diff.	% diff.	2015	2016	# diff.	% diff.	2015	2016	% pt. diff.
Anti-Social Behaviour (incidents)	5905	5500	-405	-6.9	-	-	-	-	-	-	-
All Crime (excl. Action (NFIB) Fraud)	11219	12611	1392	12.4	2449	2665	216	8.8	21.8	21.1	-0.7
- State Based Crime	923	1244	321	34.8	526	565	39	7.4	57.0	45.4	-11.6
- Victim Based Crime	10296	11367	1071	10.4	1923	2100	177	9.2	18.7	18.5	-0.2
Victim Based Crime	Offences				Outcomes				Solved Rates %		
Crime Type	2015	2016	# diff.	% diff.	2015	2016	# diff.	% diff.	2015	2016	% pt. diff.
Violence Against the Person	2434	3225	791	32.5	755	874	119	15.8	31.0	27.1	-3.9
- Homicide	0	2	2	-	0	0	0	-	-	0.0	-
- Violence with Injury	1042	1226	184	17.7	372	391	19	5.1	35.7	31.9	-3.8
- Violence without Injury	1392	1997	605	43.5	383	483	100	26.1	27.5	24.2	-3.3
Sexual Offences	243	271	28	11.5	40	39	-1	-2.5	16.5	14.4	-2.1
- Rape	98	101	3	3.1	12	11	-1	-8.3	12.2	10.9	-1.4
- Rape - Under 16 yrs	41	32	-9	-22.0	7	10	3	42.9	17.1	31.3	14.2
- Rape - Over 16 yrs	57	69	12	21.1	5	1	-4	-80.0	8.8	1.4	-7.3
- Other Sexual Offences	145	170	25	17.2	28	28	0	0.0	19.3	16.5	-2.8
Robbery	110	115	5	4.5	28	22	-6	-21.4	25.5	19.1	-6.3
- Robbery of business property	15	13	-2	-13.3	4	9	5	125.0	26.7	69.2	42.6
- Robbery of Personal Property	95	102	7	7.4	24	13	-11	-45.8	25.3	12.7	-12.5
Theft Offences	6022	6027	5	0.1	924	931	7	0.8	15.3	15.4	0.1
- Burglary	1412	1439	27	1.9	132	101	-31	-23.5	9.3	7.0	-2.3
- Dwelling Burglary	783	738	-45	-5.7	100	76	-24	-24.0	12.8	10.3	-2.5
- Other Burglary	629	701	72	11.4	32	25	-7	-21.9	5.1	3.6	-1.5
- Vehicle Offences (incl. Interference)	1710	1634	-76	-4.4	86	58	-28	-32.6	5.0	3.5	-1.5
- Theft from Vehicle	1023	1002	-21	-2.1	27	22	-5	-18.5	2.6	2.2	-0.4
- Theft of Motor Vehicle	516	511	-5	-1.0	52	34	-18	-34.6	10.1	6.7	-3.4
- Vehicle Interference	171	121	-50	-29.2	7	2	-5	-71.4	4.1	1.7	-2.4
- Theft	2900	2954	54	1.9	706	772	66	9.3	24.3	26.1	1.8
- Theft from the Person	126	177	51	40.5	0	8	8	-	0.0	4.5	4.5
- Theft of Pedal Cycle	259	234	-25	-9.7	9	8	-1	-11.1	3.5	3.4	-0.1
- Shoplifting	1151	1324	173	15.0	559	641	82	14.7	48.6	48.4	-0.2
- Other Theft	1364	1219	-145	-10.6	138	115	-23	-16.7	10.1	9.4	-0.7
Criminal Damage inc. Arson	1487	1729	242	16.3	176	234	58	33.0	11.8	13.5	1.7
- Criminal Damage	1424	1656	232	16.3	170	229	59	34.7	11.9	13.8	1.9
- Arson	63	73	10	15.9	6	5	-1	-16.7	9.5	6.8	-2.7
Racial/Religiously Aggravated Offences	136	164	28	20.6	30	34	4	13.3	22.1	20.7	-1.3
State Based Crime	Offences				Outcomes				Solved Rates %		
Crime Type	2015	2016	# diff.	% diff.	2015	2016	# diff.	% diff.	2015	2016	% pt. diff.
Drug Offences	296	303	7	2.4	271	263	-8	-3.0	91.6	86.8	-4.8
- Trafficking of Drugs	49	53	4	8.2	42	28	-14	-33.3	85.7	52.8	-32.9
- Possession of Drugs	247	250	3	1.2	229	235	6	2.6	92.7	94.0	1.3
Possession of Weapons	75	74	-1	-1.3	52	45	-7	-13.5	69.3	60.8	-8.5
Public Order	416	693	277	66.6	145	183	38	26.2	34.9	26.4	-8.4
Miscellaneous Crimes against Society	136	174	38	27.9	58	74	16	27.6	42.6	42.5	-0.1

Corporate Services: Performance Summary
Essex Police Performance Summary

Epping
Cumulative Year to July

Top Level	Offences				Outcomes				Solved Rates %		
Crime Type	2015	2016	# diff.	% diff.	2015	2016	# diff.	% diff.	2015	2016	% pt. diff.
Anti-Social Behaviour (incidents)	1384	1368	-16	-1.2	-	-	-	-	-	-	-
All Crime (excl. Action (NFIB) Fraud)	2614	2796	182	7.0	297	390	93	31.3	11.4	13.9	2.6
- State Based Crime	263	317	54	20.5	86	133	47	54.7	32.7	42.0	9.3
- Victim Based Crime	2351	2479	128	5.4	211	257	46	21.8	9.0	10.4	1.4
Victim Based Crime	Offences				Outcomes				Solved Rates %		
Crime Type	2015	2016	# diff.	% diff.	2015	2016	# diff.	% diff.	2015	2016	% pt. diff.
Violence Against the Person	525	662	137	26.1	91	131	40	44.0	17.3	19.8	2.5
- Homicide	0	0	0	-	0	0	0	-	-	-	-
- Violence with Injury	205	262	57	27.8	46	43	-3	-6.5	22.4	16.4	-6.0
- Violence without Injury	320	400	80	25.0	45	88	43	95.6	14.1	22.0	7.9
Sexual Offences	48	51	3	6.3	8	6	-2	-25.0	16.7	11.8	-4.9
- Rape	14	19	5	35.7	4	0	-4	-100.0	28.6	0.0	-28.6
- Rape - Under 16 yrs	6	8	2	33.3	0	0	0	-	0.0	0.0	0.0
- Rape - Over 16 yrs	8	11	3	37.5	4	0	-4	-100.0	50.0	0.0	-50.0
- Other Sexual Offences	34	32	-2	-5.9	4	6	2	50.0	11.8	18.8	7.0
Robbery	27	18	-9	-33.3	2	1	-1	-50.0	7.4	5.6	-1.9
- Robbery of business property	0	1	1	-	0	0	0	-	-	0.0	-
- Robbery of Personal Property	27	17	-10	-37.0	2	1	-1	-50.0	7.4	5.9	-1.5
Theft Offences	1468	1412	-56	-3.8	76	76	0	0.0	5.2	5.4	0.2
- Burglary	409	364	-45	-11.0	23	17	-6	-26.1	5.6	4.7	-1.0
- Dwelling Burglary	262	200	-62	-23.7	21	7	-14	-66.7	8.0	3.5	-4.5
- Other Burglary	147	164	17	11.6	2	10	8	400.0	1.4	6.1	4.7
- Vehicle Offences (incl. Interference)	531	467	-64	-12.1	11	6	-5	-45.5	2.1	1.3	-0.8
- Theft from Vehicle	329	270	-59	-17.9	5	4	-1	-20.0	1.5	1.5	0.0
- Theft of Motor Vehicle	150	148	-2	-1.3	6	2	-4	-66.7	4.0	1.4	-2.6
- Vehicle Interference	52	49	-3	-5.8	0	0	0	-	0.0	0.0	0.0
- Theft	528	581	53	10.0	42	53	11	26.2	8.0	9.1	1.2
- Theft from the Person	14	33	19	135.7	0	1	1	-	0.0	3.0	3.0
- Theft of Pedal Cycle	27	17	-10	-37.0	1	0	-1	-100.0	3.7	0.0	-3.7
- Shoplifting	151	160	9	6.0	33	29	-4	-12.1	21.9	18.1	-3.7
- Other Theft	336	371	35	10.4	8	23	15	187.5	2.4	6.2	3.8
Criminal Damage inc. Arson	283	336	53	18.7	34	43	9	26.5	12.0	12.8	0.8
- Criminal Damage	276	329	53	19.2	34	41	7	20.6	12.3	12.5	0.1
- Arson	7	7	0	0.0	0	2	2	-	0.0	28.6	28.6
Racial/Religiously Aggravated Offences	28	38	10	35.7	3	3	0	0.0	10.7	7.9	-2.8
State Based Crime	Offences				Outcomes				Solved Rates %		
Crime Type	2015	2016	# diff.	% diff.	2015	2016	# diff.	% diff.	2015	2016	% pt. diff.
Drug Offences	63	80	17	27.0	51	74	23	45.1	81.0	92.5	11.5
- Trafficking of Drugs	9	10	1	11.1	2	10	8	400.0	22.2	100.0	77.8
- Possession of Drugs	54	70	16	29.6	49	64	15	30.6	90.7	91.4	0.7
Possession of Weapons	15	17	2	13.3	5	10	5	100.0	33.3	58.8	25.5
Public Order	145	181	36	24.8	20	39	19	95.0	13.8	21.5	7.8
Miscellaneous Crimes against Society	40	39	-1	-2.5	10	10	0	0.0	25.0	25.6	0.6

Corporate Services: Performance Summary
Essex Police Performance Summary

Epping
Rolling 12 Months to July

Top Level	Offences				Outcomes				Solved Rates %		
Crime Type	2015	2016	# diff.	% diff.	2015	2016	# diff.	% diff.	2015	2016	% pt. diff.
Anti-Social Behaviour (incidents)	3746	3588	-158	-4.2	-	-	-	-	-	-	-
All Crime (excl. Action (NFIB) Fraud)	6933	7557	624	9.0	1116	1223	107	9.6	16.1	16.2	0.1
- State Based Crime	648	778	130	20.1	298	357	59	19.8	46.0	45.9	-0.1
- Victim Based Crime	6285	6779	494	7.9	818	866	48	5.9	13.0	12.8	-0.2
Victim Based Crime	Offences				Outcomes				Solved Rates %		
Crime Type	2015	2016	# diff.	% diff.	2015	2016	# diff.	% diff.	2015	2016	% pt. diff.
Violence Against the Person	1443	1892	449	31.1	359	430	71	19.8	24.9	22.7	-2.2
- Homicide	0	2	2	-	0	1	1	-	-	50.0	-
- Violence with Injury	592	725	133	22.5	169	172	3	1.8	28.5	23.7	-4.8
- Violence without Injury	851	1165	314	36.9	190	257	67	35.3	22.3	22.1	-0.3
Sexual Offences	137	131	-6	-4.4	23	11	-12	-52.2	16.8	8.4	-8.4
- Rape	46	45	-1	-2.2	9	2	-7	-77.8	19.6	4.4	-15.1
- Rape - Under 16 yrs	14	15	1	7.1	1	1	0	0.0	7.1	6.7	-0.5
- Rape - Over 16 yrs	32	30	-2	-6.3	8	1	-7	-87.5	25.0	3.3	-21.7
- Other Sexual Offences	91	86	-5	-5.5	14	9	-5	-35.7	15.4	10.5	-4.9
Robbery	87	76	-11	-12.6	13	5	-8	-61.5	14.9	6.6	-8.4
- Robbery of business property	2	5	3	150.0	0	1	1	-	0.0	20.0	20.0
- Robbery of Personal Property	85	71	-14	-16.5	13	4	-9	-69.2	15.3	5.6	-9.7
Theft Offences	3805	3774	-31	-0.8	327	299	-28	-8.6	8.6	7.9	-0.7
- Burglary	1153	1028	-125	-10.8	86	57	-29	-33.7	7.5	5.5	-1.9
- Dwelling Burglary	774	627	-147	-19.0	80	38	-42	-52.5	10.3	6.1	-4.3
- Other Burglary	379	401	22	5.8	6	19	13	216.7	1.6	4.7	3.2
- Vehicle Offences (incl. Interference)	1240	1180	-60	-4.8	29	90	61	210.3	2.3	7.6	5.3
- Theft from Vehicle	737	652	-85	-11.5	10	59	49	490.0	1.4	9.0	7.7
- Theft of Motor Vehicle	391	403	12	3.1	15	26	11	73.3	3.8	6.5	2.6
- Vehicle Interference	112	125	13	11.6	4	5	1	25.0	3.6	4.0	0.4
- Theft	1412	1566	154	10.9	212	152	-60	-28.3	15.0	9.7	-5.3
- Theft from the Person	62	90	28	45.2	0	1	1	-	0.0	1.1	1.1
- Theft of Pedal Cycle	55	64	9	16.4	4	1	-3	-75.0	7.3	1.6	-5.7
- Shoplifting	452	442	-10	-2.2	129	100	-29	-22.5	28.5	22.6	-5.9
- Other Theft	843	970	127	15.1	79	50	-29	-36.7	9.4	5.2	-4.2
Criminal Damage inc. Arson	813	906	93	11.4	96	121	25	26.0	11.8	13.4	1.5
- Criminal Damage	784	883	99	12.6	96	117	21	21.9	12.2	13.3	1.0
- Arson	29	23	-6	-20.7	0	4	4	-	0.0	17.4	17.4
Racial/Religiously Aggravated Offences	82	76	-6	-7.3	17	12	-5	-29.4	20.7	15.8	-4.9
State Based Crime	Offences				Outcomes				Solved Rates %		
Crime Type	2015	2016	# diff.	% diff.	2015	2016	# diff.	% diff.	2015	2016	% pt. diff.
Drug Offences	171	204	33	19.3	142	190	48	33.8	83.0	93.1	10.1
- Trafficking of Drugs	23	40	17	73.9	9	33	24	266.7	39.1	82.5	43.4
- Possession of Drugs	148	164	16	10.8	133	157	24	18.0	89.9	95.7	5.9
Possession of Weapons	40	42	2	5.0	23	36	13	56.5	57.5	85.7	28.2
Public Order	337	433	96	28.5	96	95	-1	-1.0	28.5	21.9	-6.5
Miscellaneous Crimes against Society	100	99	-1	-1.0	37	36	-1	-2.7	37.0	36.4	-0.6

Corporate Services: Performance Summary
Essex Police Performance Summary

Harlow
Cumulative Year to July

Top Level	Offences				Outcomes				Solved Rates %		
Crime Type	2015	2016	# diff.	% diff.	2015	2016	# diff.	% diff.	2015	2016	% pt. diff.
Anti-Social Behaviour (incidents)	1438	1450	12	0.8	-	-	-	-	-	-	-
All Crime (excl. Action (NFIB) Fraud)	2383	2411	28	1.2	508	593	85	16.7	21.3	24.6	3.3
- State Based Crime	249	299	50	20.1	127	151	24	18.9	51.0	50.5	-0.5
- Victim Based Crime	2134	2112	-22	-1.0	381	442	61	16.0	17.9	20.9	3.1
Victim Based Crime	Offences				Outcomes				Solved Rates %		
Crime Type	2015	2016	# diff.	% diff.	2015	2016	# diff.	% diff.	2015	2016	% pt. diff.
Violence Against the Person	602	682	80	13.3	166	178	12	7.2	27.6	26.1	-1.5
- Homicide	1	0	-1	-100.0	0	0	0	-	0.0	-	-
- Violence with Injury	223	258	35	15.7	70	78	8	11.4	31.4	30.2	-1.2
- Violence without Injury	378	424	46	12.2	96	100	4	4.2	25.4	23.6	-1.8
Sexual Offences	67	74	7	10.4	7	10	3	42.9	10.4	13.5	3.1
- Rape	20	31	11	55.0	3	1	-2	-66.7	15.0	3.2	-11.8
- Rape - Under 16 yrs	4	9	5	125.0	1	0	-1	-100.0	25.0	0.0	-25.0
- Rape - Over 16 yrs	16	22	6	37.5	2	1	-1	-50.0	12.5	4.5	-8.0
- Other Sexual Offences	47	43	-4	-8.5	4	9	5	125.0	8.5	20.9	12.4
Robbery	25	14	-11	-44.0	3	0	-3	-100.0	12.0	0.0	-12.0
- Robbery of business property	0	0	0	-	0	0	0	-	-	-	-
- Robbery of Personal Property	25	14	-11	-44.0	3	0	-3	-100.0	12.0	0.0	-12.0
Theft Offences	1148	1010	-138	-12.0	167	202	35	21.0	14.5	20.0	5.5
- Burglary	185	197	12	6.5	12	13	1	8.3	6.5	6.6	0.1
- Dwelling Burglary	89	65	-24	-27.0	9	4	-5	-55.6	10.1	6.2	-4.0
- Other Burglary	96	132	36	37.5	3	9	6	200.0	3.1	6.8	3.7
- Vehicle Offences (incl. Interference)	372	205	-167	-44.9	3	7	4	133.3	0.8	3.4	2.6
- Theft from Vehicle	266	108	-158	-59.4	0	2	2	-	0.0	1.9	1.9
- Theft of Motor Vehicle	63	79	16	25.4	3	5	2	66.7	4.8	6.3	1.6
- Vehicle Interference	43	18	-25	-58.1	0	0	0	-	0.0	0.0	0.0
- Theft	591	608	17	2.9	152	182	30	19.7	25.7	29.9	4.2
- Theft from the Person	26	36	10	38.5	0	1	1	-	0.0	2.8	2.8
- Theft of Pedal Cycle	44	62	18	40.9	0	2	2	-	0.0	3.2	3.2
- Shoplifting	260	260	0	0.0	136	163	27	19.9	52.3	62.7	10.4
- Other Theft	261	250	-11	-4.2	16	16	0	0.0	6.1	6.4	0.3
Criminal Damage inc. Arson	292	332	40	13.7	38	52	14	36.8	13.0	15.7	2.6
- Criminal Damage	281	325	44	15.7	38	51	13	34.2	13.5	15.7	2.2
- Arson	11	7	-4	-36.4	0	1	1	-	0.0	14.3	14.3
Racial/Religiously Aggravated Offences	11	22	11	100.0	9	7	-2	-22.2	81.8	31.8	-50.0
State Based Crime	Offences				Outcomes				Solved Rates %		
Crime Type	2015	2016	# diff.	% diff.	2015	2016	# diff.	% diff.	2015	2016	% pt. diff.
Drug Offences	82	90	8	9.8	64	77	13	20.3	78.0	85.6	7.5
- Trafficking of Drugs	17	20	3	17.6	13	12	-1	-7.7	76.5	60.0	-16.5
- Possession of Drugs	65	70	5	7.7	51	65	14	27.5	78.5	92.9	14.4
Possession of Weapons	18	22	4	22.2	10	16	6	60.0	55.6	72.7	17.2
Public Order	112	162	50	44.6	43	48	5	11.6	38.4	29.6	-8.8
Miscellaneous Crimes against Society	37	25	-12	-32.4	10	10	0	0.0	27.0	40.0	13.0

Corporate Services: Performance Summary
Essex Police Performance Summary

Harlow

Rolling 12 Months to July

Top Level	Offences				Outcomes				Solved Rates %		
Crime Type	2015	2016	# diff.	% diff.	2015	2016	# diff.	% diff.	2015	2016	% pt. diff.
Anti-Social Behaviour (incidents)	4231	3771	-460	-10.9	-	-	-	-	-	-	-
All Crime (excl. Action (NFIB) Fraud)	6894	7214	320	4.6	1857	1902	45	2.4	26.9	26.4	-0.6
- State Based Crime	686	839	153	22.3	421	449	28	6.7	61.4	53.5	-7.9
- Victim Based Crime	6208	6375	167	2.7	1436	1453	17	1.2	23.1	22.8	-0.3
Victim Based Crime	Offences				Outcomes				Solved Rates %		
Crime Type	2015	2016	# diff.	% diff.	2015	2016	# diff.	% diff.	2015	2016	% pt. diff.
Violence Against the Person	1607	1900	293	18.2	545	526	-19	-3.5	33.9	27.7	-6.2
- Homicide	1	3	2	200.0	0	2	2	-	0.0	66.7	66.7
- Violence with Injury	667	738	71	10.6	236	232	-4	-1.7	35.4	31.4	-3.9
- Violence without Injury	939	1159	220	23.4	309	292	-17	-5.5	32.9	25.2	-7.7
Sexual Offences	174	210	36	20.7	23	34	11	47.8	13.2	16.2	3.0
- Rape	58	72	14	24.1	9	4	-5	-55.6	15.5	5.6	-10.0
- Rape - Under 16 yrs	18	21	3	16.7	2	1	-1	-50.0	11.1	4.8	-6.3
- Rape - Over 16 yrs	40	51	11	27.5	7	3	-4	-57.1	17.5	5.9	-11.6
- Other Sexual Offences	116	138	22	19.0	14	30	16	114.3	12.1	21.7	9.7
Robbery	91	52	-39	-42.9	17	11	-6	-35.3	18.7	21.2	2.5
- Robbery of business property	7	3	-4	-57.1	0	1	1	-	0.0	33.3	33.3
- Robbery of Personal Property	84	49	-35	-41.7	17	10	-7	-41.2	20.2	20.4	0.2
Theft Offences	3453	3294	-159	-4.6	713	734	21	2.9	20.6	22.3	1.6
- Burglary	658	647	-11	-1.7	80	29	-51	-63.8	12.2	4.5	-7.7
- Dwelling Burglary	297	286	-11	-3.7	61	15	-46	-75.4	20.5	5.2	-15.3
- Other Burglary	361	361	0	0.0	19	14	-5	-26.3	5.3	3.9	-1.4
- Vehicle Offences (incl. Interference)	920	730	-190	-20.7	24	125	101	420.8	2.6	17.1	14.5
- Theft from Vehicle	631	433	-198	-31.4	8	91	83	1037.5	1.3	21.0	19.7
- Theft of Motor Vehicle	199	225	26	13.1	15	22	7	46.7	7.5	9.8	2.2
- Vehicle Interference	90	72	-18	-20.0	1	12	11	1100.0	1.1	16.7	15.6
- Theft	1875	1917	42	2.2	609	580	-29	-4.8	32.5	30.3	-2.2
- Theft from the Person	79	131	52	65.8	1	5	4	400.0	1.3	3.8	2.6
- Theft of Pedal Cycle	120	161	41	34.2	5	6	1	20.0	4.2	3.7	-0.4
- Shoplifting	977	942	-35	-3.6	537	507	-30	-5.6	55.0	53.8	-1.1
- Other Theft	699	683	-16	-2.3	66	62	-4	-6.1	9.4	9.1	-0.4
Criminal Damage inc. Arson	883	919	36	4.1	138	148	10	7.2	15.6	16.1	0.5
- Criminal Damage	850	893	43	5.1	136	147	11	8.1	16.0	16.5	0.5
- Arson	33	26	-7	-21.2	2	1	-1	-50.0	6.1	3.8	-2.2
Racial/Religiously Aggravated Offences	72	66	-6	-8.3	25	22	-3	-12.0	34.7	33.3	-1.4
State Based Crime	Offences				Outcomes				Solved Rates %		
Crime Type	2015	2016	# diff.	% diff.	2015	2016	# diff.	% diff.	2015	2016	% pt. diff.
Drug Offences	230	248	18	7.8	211	226	15	7.1	91.7	91.1	-0.6
- Trafficking of Drugs	37	43	6	16.2	36	30	-6	-16.7	97.3	69.8	-27.5
- Possession of Drugs	193	205	12	6.2	175	196	21	12.0	90.7	95.6	4.9
Possession of Weapons	46	56	10	21.7	34	43	9	26.5	73.9	76.8	2.9
Public Order	314	455	141	44.9	141	150	9	6.4	44.9	33.0	-11.9
Miscellaneous Crimes against Society	96	80	-16	-16.7	35	30	-5	-14.3	36.5	37.5	1.0

Corporate Services: Performance Summary
Essex Police Performance Summary

Brentwood
Cumulative Year to July

Top Level	Offences				Outcomes				Solved Rates %		
Crime Type	2015	2016	# diff.	% diff.	2015	2016	# diff.	% diff.	2015	2016	% pt. diff.
Anti-Social Behaviour (incidents)	807	632	-175	-21.7	-	-	-	-	-	-	-
All Crime (excl. Action (NFIB) Fraud)	1308	1390	82	6.3	186	229	43	23.1	14.2	16.5	2.3
- State Based Crime	82	131	49	59.8	27	42	15	55.6	32.9	32.1	-0.9
- Victim Based Crime	1226	1259	33	2.7	159	187	28	17.6	13.0	14.9	1.9
Victim Based Crime	Offences				Outcomes				Solved Rates %		
Crime Type	2015	2016	# diff.	% diff.	2015	2016	# diff.	% diff.	2015	2016	% pt. diff.
Violence Against the Person	248	335	87	35.1	48	80	32	66.7	19.4	23.9	4.5
- Homicide	1	0	-1	-100.0	0	0	0	-	0.0	-	-
- Violence with Injury	101	123	22	21.8	20	32	12	60.0	19.8	26.0	6.2
- Violence without Injury	146	212	66	45.2	28	48	20	71.4	19.2	22.6	3.5
Sexual Offences	26	24	-2	-7.7	1	1	0	0.0	3.8	4.2	0.3
- Rape	5	11	6	120.0	1	0	-1	-100.0	20.0	0.0	-20.0
- Rape - Under 16 yrs	1	5	4	400.0	0	0	0	-	0.0	0.0	0.0
- Rape - Over 16 yrs	4	6	2	50.0	1	0	-1	-100.0	25.0	0.0	-25.0
- Other Sexual Offences	21	13	-8	-38.1	0	1	1	-	0.0	7.7	7.7
Robbery	7	16	9	128.6	0	3	3	-	0.0	18.8	18.8
- Robbery of business property	0	4	4	-	0	1	1	-	-	25.0	-
- Robbery of Personal Property	7	12	5	71.4	0	2	2	-	0.0	16.7	16.7
Theft Offences	772	706	-66	-8.5	93	80	-13	-14.0	12.0	11.3	-0.7
- Burglary	192	233	41	21.4	50	19	-31	-62.0	26.0	8.2	-17.9
- Dwelling Burglary	123	132	9	7.3	41	11	-30	-73.2	33.3	8.3	-25.0
- Other Burglary	69	101	32	46.4	9	8	-1	-11.1	13.0	7.9	-5.1
- Vehicle Offences (incl. Interference)	259	178	-81	-31.3	10	2	-8	-80.0	3.9	1.1	-2.7
- Theft from Vehicle	160	89	-71	-44.4	5	1	-4	-80.0	3.1	1.1	-2.0
- Theft of Motor Vehicle	62	75	13	21.0	0	0	0	-	0.0	0.0	0.0
- Vehicle Interference	37	14	-23	-62.2	5	1	-4	-80.0	13.5	7.1	-6.4
- Theft	321	295	-26	-8.1	33	59	26	78.8	10.3	20.0	9.7
- Theft from the Person	21	20	-1	-4.8	0	1	1	-	0.0	5.0	5.0
- Theft of Pedal Cycle	27	17	-10	-37.0	1	2	1	100.0	3.7	11.8	8.1
- Shoplifting	77	76	-1	-1.3	24	36	12	50.0	31.2	47.4	16.2
- Other Theft	196	182	-14	-7.1	8	20	12	150.0	4.1	11.0	6.9
Criminal Damage inc. Arson	173	178	5	2.9	17	23	6	35.3	9.8	12.9	3.1
- Criminal Damage	165	175	10	6.1	17	23	6	35.3	10.3	13.1	2.8
- Arson	8	3	-5	-62.5	0	0	0	-	0.0	0.0	0.0
Racial/Religiously Aggravated Offences	8	19	11	137.5	2	3	1	50.0	25.0	15.8	-9.2
State Based Crime	Offences				Outcomes				Solved Rates %		
Crime Type	2015	2016	# diff.	% diff.	2015	2016	# diff.	% diff.	2015	2016	% pt. diff.
Drug Offences	14	18	4	28.6	12	16	4	33.3	85.7	88.9	3.2
- Trafficking of Drugs	5	4	-1	-20.0	2	3	1	50.0	40.0	75.0	35.0
- Possession of Drugs	9	14	5	55.6	10	13	3	30.0	111.1	92.9	-18.3
Possession of Weapons	4	4	0	0.0	3	5	2	66.7	75.0	125.0	50.0
Public Order	52	85	33	63.5	10	15	5	50.0	19.2	17.6	-1.6
Miscellaneous Crimes against Society	12	24	12	100.0	2	6	4	200.0	16.7	25.0	8.3

Corporate Services: Performance Summary
Essex Police Performance Summary

Brentwood
Rolling 12 Months to July

Top Level	Offences				Outcomes				Solved Rates %		
Crime Type	2015	2016	# diff.	% diff.	2015	2016	# diff.	% diff.	2015	2016	% pt. diff.
Anti-Social Behaviour (incidents)	2063	1832	-231	-11.2	-	-	-	-	-	-	-
All Crime (excl. Action (NFIB) Fraud)	3642	3901	259	7.1	658	617	-41	-6.2	18.1	15.8	-2.3
- State Based Crime	230	299	69	30.0	139	112	-27	-19.4	60.4	37.5	-23.0
- Victim Based Crime	3412	3602	190	5.6	519	505	-14	-2.7	15.2	14.0	-1.2
Victim Based Crime	Offences				Outcomes				Solved Rates %		
Crime Type	2015	2016	# diff.	% diff.	2015	2016	# diff.	% diff.	2015	2016	% pt. diff.
Violence Against the Person	716	829	113	15.8	197	205	8	4.1	27.5	24.7	-2.8
- Homicide	2	0	-2	-100.0	1	0	-1	-100.0	50.0	-	-
- Violence with Injury	289	336	47	16.3	79	95	16	20.3	27.3	28.3	0.9
- Violence without Injury	425	493	68	16.0	117	110	-7	-6.0	27.5	22.3	-5.2
Sexual Offences	63	70	7	11.1	6	3	-3	-50.0	9.5	4.3	-5.2
- Rape	16	29	13	81.3	2	0	-2	-100.0	12.5	0.0	-12.5
- Rape - Under 16 yrs	4	10	6	150.0	1	0	-1	-100.0	25.0	0.0	-25.0
- Rape - Over 16 yrs	12	19	7	58.3	1	0	-1	-100.0	8.3	0.0	-8.3
- Other Sexual Offences	47	41	-6	-12.8	4	3	-1	-25.0	8.5	7.3	-1.2
Robbery	20	40	20	100.0	5	11	6	120.0	25.0	27.5	2.5
- Robbery of business property	2	7	5	250.0	1	3	2	200.0	50.0	42.9	-7.1
- Robbery of Personal Property	18	33	15	83.3	4	8	4	100.0	22.2	24.2	2.0
Theft Offences	2175	2131	-44	-2.0	252	233	-19	-7.5	11.6	10.9	-0.7
- Burglary	634	676	42	6.6	94	37	-57	-60.6	14.8	5.5	-9.4
- Dwelling Burglary	442	408	-34	-7.7	77	25	-52	-67.5	17.4	6.1	-11.3
- Other Burglary	192	268	76	39.6	17	12	-5	-29.4	8.9	4.5	-4.4
- Vehicle Offences (incl. Interference)	711	641	-70	-9.8	28	21	-7	-25.0	3.9	3.3	-0.7
- Theft from Vehicle	446	347	-99	-22.2	9	10	1	11.1	2.0	2.9	0.9
- Theft of Motor Vehicle	185	242	57	30.8	14	6	-8	-57.1	7.6	2.5	-5.1
- Vehicle Interference	80	52	-28	-35.0	5	5	0	0.0	6.3	9.6	3.4
- Theft	830	814	-16	-1.9	130	175	45	34.6	15.7	21.5	5.8
- Theft from the Person	43	69	26	60.5	1	1	0	0.0	2.3	1.4	-0.9
- Theft of Pedal Cycle	63	35	-28	-44.4	2	3	1	50.0	3.2	8.6	5.4
- Shoplifting	201	230	29	14.4	77	120	43	55.8	38.3	52.2	13.9
- Other Theft	523	480	-43	-8.2	50	51	1	2.0	9.6	10.6	1.1
Criminal Damage inc. Arson	438	532	94	21.5	59	53	-6	-10.2	13.5	10.0	-3.5
- Criminal Damage	425	523	98	23.1	58	53	-5	-8.6	13.6	10.1	-3.5
- Arson	13	9	-4	-30.8	1	0	-1	-100.0	7.7	0.0	-7.7
Racial/Religiously Aggravated Offences	21	28	7	33.3	5	5	0	0.0	23.8	17.9	-6.0
State Based Crime	Offences				Outcomes				Solved Rates %		
Crime Type	2015	2016	# diff.	% diff.	2015	2016	# diff.	% diff.	2015	2016	% pt. diff.
Drug Offences	70	44	-26	-37.1	66	42	-24	-36.4	94.3	95.5	1.2
- Trafficking of Drugs	11	10	-1	-9.1	5	10	5	100.0	45.5	100.0	54.5
- Possession of Drugs	59	34	-25	-42.4	61	32	-29	-47.5	103.4	94.1	-9.3
Possession of Weapons	14	19	5	35.7	11	15	4	36.4	78.6	78.9	0.4
Public Order	112	181	69	61.6	46	42	-4	-8.7	41.1	23.2	-17.9
Miscellaneous Crimes against Society	34	55	21	61.8	16	13	-3	-18.8	47.1	23.6	-23.4