



District Profile

Basildon District is part of the South Local Policing Area and includes the towns of Basildon, Billericay, Pitsea, Laindon and Wickford. The main areas of employment in the district are engineering, retail, distribution and financial services.

Basildon District has the highest population and number of households in Essex. The district includes 72,746 households and has a total population of 174,497 residents.

Most of the night-time economy in Basildon is centred in the Festival Leisure Park complex where relationships between the police, site management and venue managers are very good. Other areas within the district that have a smaller night-time economy include Basildon town centre and Billericay.

Policing Structure, Demand and Resources

Basildon District is one of the busiest districts for crime and incidents in the county of Essex. The district is policed from a number of locations and teams within the borough.

Teams based at Basildon police station, include: 24/7 Local Policing Teams; CID; Operation Juno; Prisoner Process Teams; Retail Crime Team; Neighbourhood Policing Team; Intelligence Cell; Scenes of Crime; and the Command Team.

Pitsea and Billericay police stations house a front office, neighbourhood policing teams and a youth officer. The station in Wickford houses neighbourhood policing teams and licensing whilst neighbourhood policing teams are based at Laindon. The road policing unit continues to be based at the Laindon Traffic Garage.

Neighbourhood Policing Teams (NPTs)

The district has two Neighbourhood Policing Teams (NPTs) and 16 wards (including one additional officer for Crays Hill and the Dale Farm area) split into two areas: east and west, with a neighbourhood Inspector in charge of each team for each area.

Neighbourhood Sergeants supervise Neighbourhood Constables, Police Community Support Officers and Customer Contact Administrators.

Responsibility for the 16 wards is split between ten Neighbourhood Constables and a number of Police Community Support Officers (PCSOs). The officers work with the community to seek long-term solutions to local problems.

There are three police stations within the district that are open to the public (Basildon, Pitsea and Billericay). Basildon has opening hours between 8am and midnight seven days per week, whilst Pitsea and Billericay are open between 12noon and 6pm Monday to Saturday. Wickford and Laindon police stations have NPT officers working from them but they are not open to the public.

The working relationship with Basildon District Borough Council is very healthy and there is extensive joint working. An example of this is the Community Safety Action Zone - which is a multi-agency, targeted programme which aims to improve crime levels and quality of life in problem areas - and the joint activity in relation to tackling sexual violence against women.

Retail Crime Unit

The Retail Crime Unit deals with retail crime and offences of 'Making off Without Payment' (fuel related crimes) in the entire district. The unit's original remit only covered the Basildon town centre area. However, in February 2013 this expanded to incorporate the whole district.

The primary focus is the investigation of crimes against businesses, such as theft, and the provision of visible policing to reassure the public, reduce crime and make proactive arrests where required. The team has two Sergeants, eight Constables and four PCSOs and they operate the town link radio system ensuring retailers can be in contact with officers on patrol.

Local Policing Teams

There are five Local Policing Teams (LPTs) based at Basildon police station that work shifts to provide 24 hour coverage. Each team deals with a range of policing duties, including responding to emergency and priority incidents, other incident demand, appointments, missing persons and the investigation of volume crime. This team is supported by a small Prisoner Processing Team.

CID

Based at Basildon, CID has three teams of detectives led by a Detective Inspector, which investigate more serious crimes such as serious assaults and burglary.

Domestic Abuse Crime Unit/Operation Juno Team

The Operation Juno team – formerly known as the Domestic Abuse Crime Unit (DACU) - is based at Basildon police station and the team is responsible for investigating all domestic abuse cases and safeguarding victims. The DACU

provides a service for the district seven days a week; it is led by a Detective Inspector and is made up of Detective Sergeants and investigators.

Crime data for Basildon

At the meeting on February 4, 2015, there will be a detailed discussion about the crime trends and facts which lie underneath the statistics.

Key areas of note for Basildon, comparing reports for January 2013 to December 2013 with January 2014 to December 2014, include:

Areas of note:

- All Crime has increased by 3.5% (408 more offences);
- Burglary in a Dwelling has decreased by 6.3% (72 less offences);
- Shoplifting has decreased by 22.3% (300 less offences);
- Serious Violent Crime has decreased by 11.4% (14 less offences);
- Anti-Social Behaviour has decreased by 3.0% (192 less incidents);
- Burglary in Other Than in Dwelling has increased by 54.8% (251 more offences);
- Other Violence Against the Person has increased by 15.0% (362 more offences);
- Serious Sexual Crime has increased by 40.1% (57 more offences).

The above figures show that the number of house burglary offences has reduced by 6.3% or 72 fewer offences. Under Essex Police's forcewide predictive policing operation to tackle burglary – called Operation Insight - officers visit burglary victims and patrols are undertaken to complete risk assessments on properties in the surrounding area. The risk assessments aim to identify vulnerable properties, people and vehicles and officers provide crime prevention advice to owners of such properties.

The number of serious sexual crimes has increased by 40.1% or 57 more offences. This increase has occurred across Essex generally and nationally and appears to be partly attributable to the publicity around the Jimmy Savile inquiry and other high profile cases which has prompted many victims to come forward.

Drug-related crime

During the reporting period serious violent crime has seen an 11.4% reduction, equating to 14 less offences.

Essex Police have carried out much work in the district to target the problem of drug dealing and associated offences.

In 2012, the Basildon district saw an increase in violent offences connected to the supply and distribution of Class 'A' drugs - namely Heroin and Crack Cocaine.

The problem was largely caused by a London-based gang who targeted Basildon as a base for a sophisticated drug dealing operation. As part of this the criminals took advantage of locally-based drug users who were promised regular supplies of heroin and crack cocaine in return for the use of their homes as a base to store and deal drugs.

In response to the problem, in June 2012 detectives from the Essex and Kent Serious Crime Directorate established and led a crackdown, codenamed Operation Kilo.

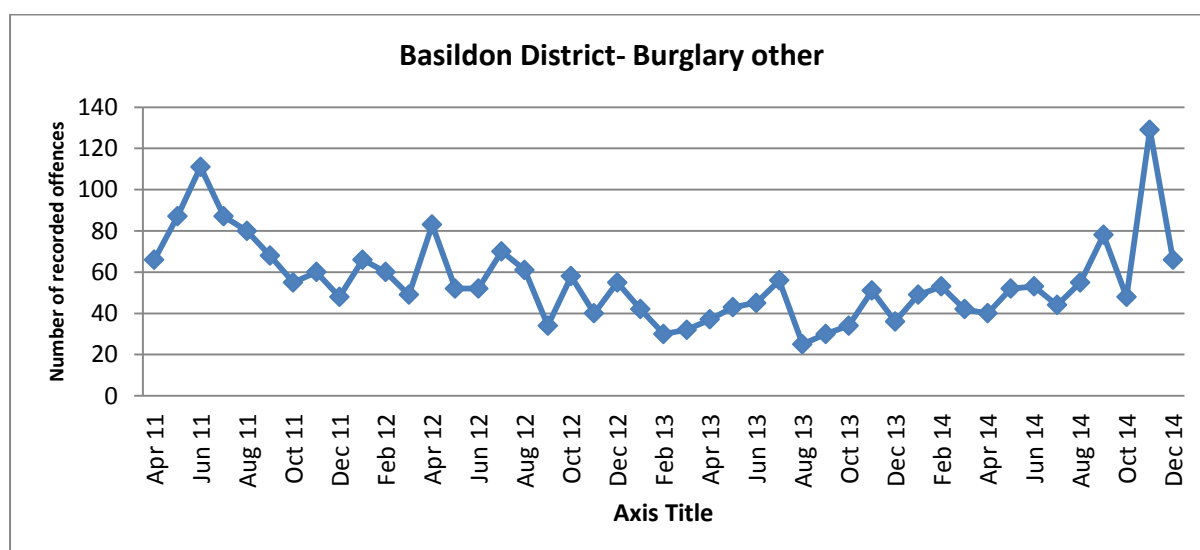
This saw undercover officers' posing as drug dealers to secure vital and damning evidence against the gang.

In January 2014, thirteen members of the gang were given lengthy prison sentences for offences including conspiracy to supply Class A drugs, robbery and money laundering. Proceeds of Crime Act proceedings are still ongoing to recover some of the ill-gotten gains made by the gang.

This successful prosecution made a significant dent in the drug dealing problem in the district. Police in Basildon continue to proactively target problems around drug dealing and regularly carry out raids in this respect.

Burglary Other

During the reporting period, there was a 54.8 % increase in offences of Burglary Other (251 more offences) compared with the same period the previous year. The offence of burglary other includes break-ins into garages, sheds, outbuildings and commercial premises.



The majority of offences (60%) involve burglaries of sheds and garages that have been targeted and 21% of the burglaries relate to commercial premises.

During the summer of 2014 there was a noticeable increase in commercial burglary and the plans in place identified three key offenders. Each of the offenders were repeatedly arrested during the summer and consequently received custodial sentences. This also in turn led to a reduction in the number of commercial burglaries.

In November 2014 there was a further increase in burglary other offences and according to local police, a significant amount of activity was conducted around, victims, locations and offenders using intelligence, investigation and crime prevention. This resulted in an operation being set up in Wickford which led to a drop in offences; two suspects being arrested and charged in the St Martin's ward, which was another hotspot; and a further five suspects arrested and charge in connection with offences in Pitsea.

Ongoing work to tackle this crime continues.

Serious Sexual Crime

There was a 40.1% increase in reported offences of serious sexual crime during the reporting period, equating to 57 more offences.

According to Essex Police, random attacks on strangers are extremely rare. Many reported offences involve a known and/or named suspect and a number are domestic related where offenders and victims have been in an intimate relationship with one another.

Essex Police has created the Sexual Offences Investigation Teams to enhance the service it provides to victims of crime, which may have increased the confidence of victims around reporting serious sexual crime to the police. There has been a positive response from social care and the staff at the Sexual Assault Referral Centre in relation to the provision of services for rape victims. Victims of rape that have completed questionnaires have provided positive feedback in relation to the service they have received.

A Task and Finish group focusing on sexual violence has been set up in Basildon and is being led in partnership by the local police and the South [Essex Rape and Incest Crisis Centre](#).

The aim of the group is to provide education about sexual violence and reduce the number of offences that are committed. They have developed an action plan, the results of which are managed by the Basildon Community Safety Partnership.

Your feedback is most welcome.

Should you wish to contact the PCC about this meeting or any other matter please e-mail:

pcc@essex.pnn.police.uk

or write to:

Police and Crime Commissioner for Essex

3 Hoffmanns Way

Chelmsford, CM1 1GU

News alerts will usually be tweeted via the Essex PCC Twitter account:

<https://twitter.com/essexpcc>

You can learn more about the PCC's work at:

www.essex.pcc.police.uk

The neighbourhood policing teams will always act on intelligence received from the community. If you have information regarding any criminal activity please either call your local team or contact Crimestoppers on 0800 555 111. Crimestoppers is an anonymous line where you can report any criminal activity.