

STRATEGIC CHANGE MANAGEMENT DEPARTMENT

Essex Police Performance Summary April - October 2014



**ESSEX
POLICE**

Protecting and serving Essex

Date: November 2014
Unit: Performance Information Unit
Contact: Carrie Hill



Strategic Change Management Department: Performance Summary

Essex Police Performance Summary: To October 2014

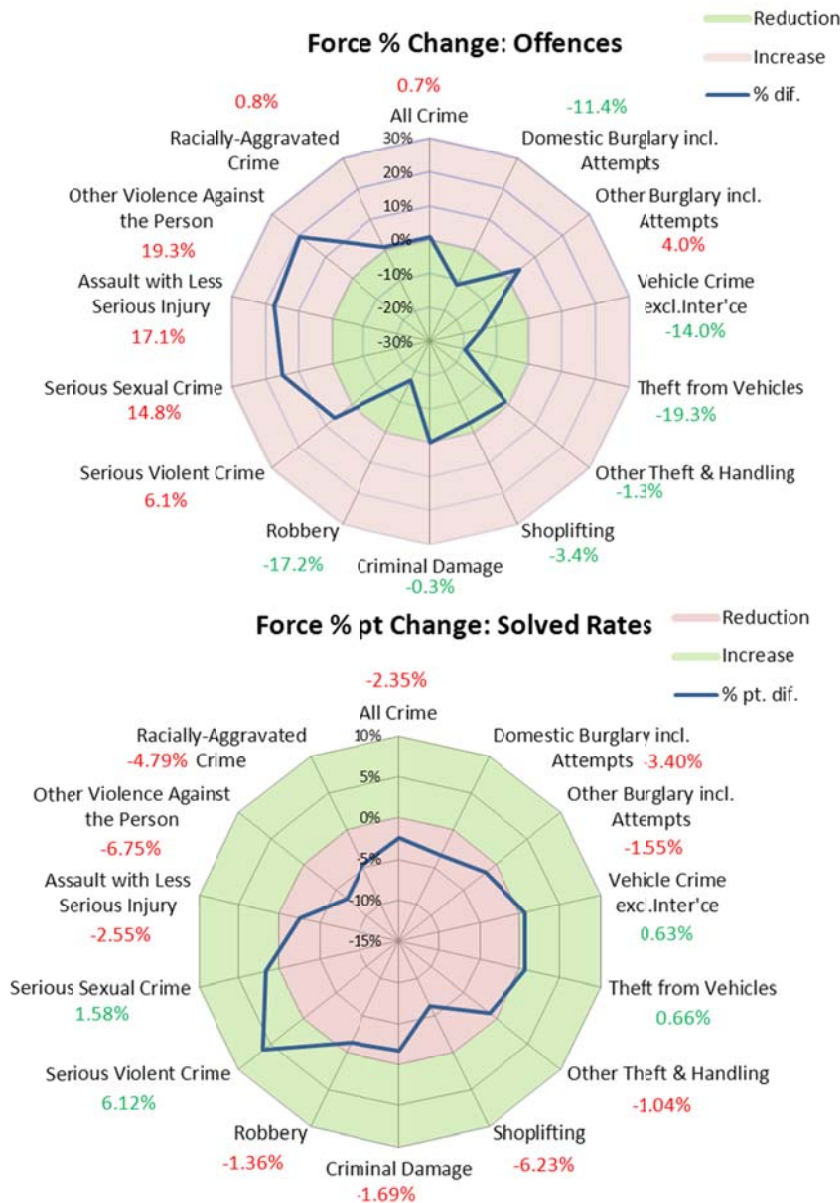
1. Introduction

This performance summary is designed to pictorially represent how individual districts are performing within each crime type.

The report includes:

- Charts to show the % difference in offences, and the % pt. difference in solved rates, in each crime type at Force level, between the two periods
- Charts to show the cumulative number of offences in each district each year, for the specified crime type, with the % difference between the two periods labelled
- Charts to show the cumulative solved rates in each district in each year, for the specified crime, with the % point difference between the two periods labelled
- Tables of data relating to both of the above

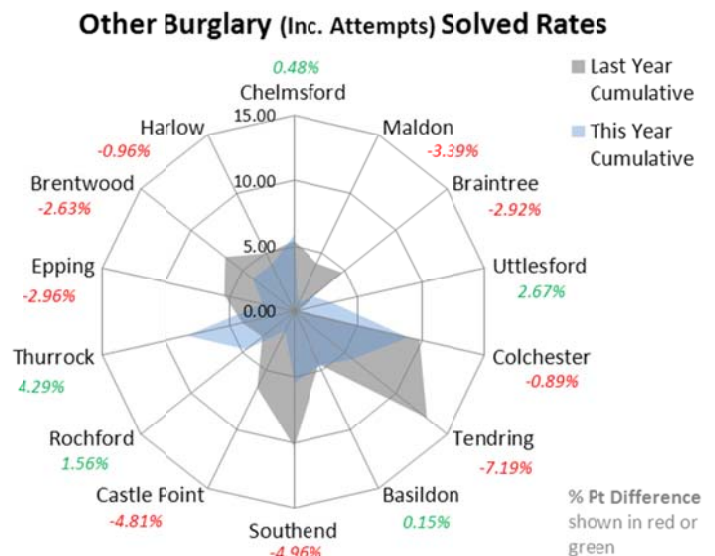
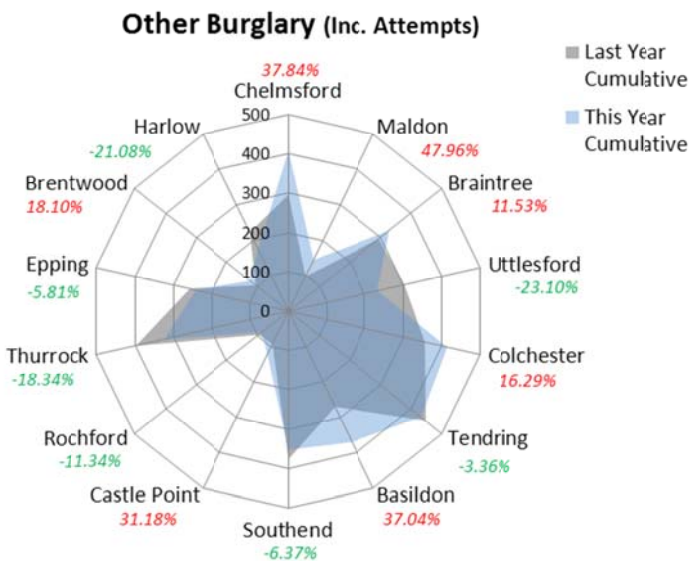
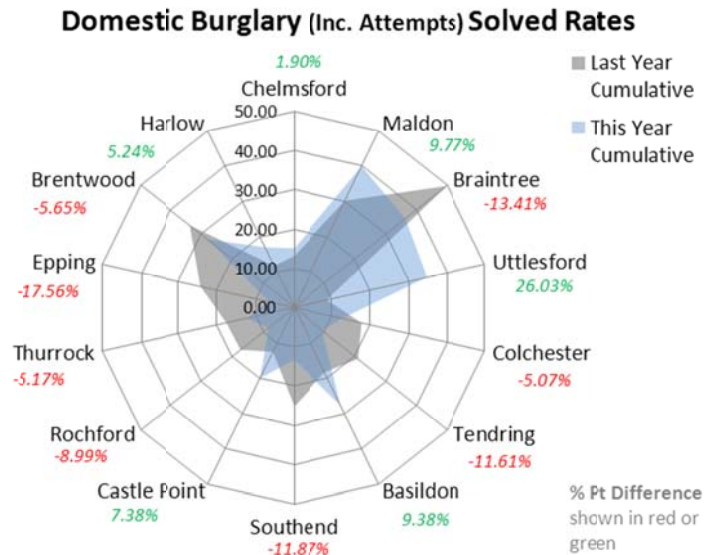
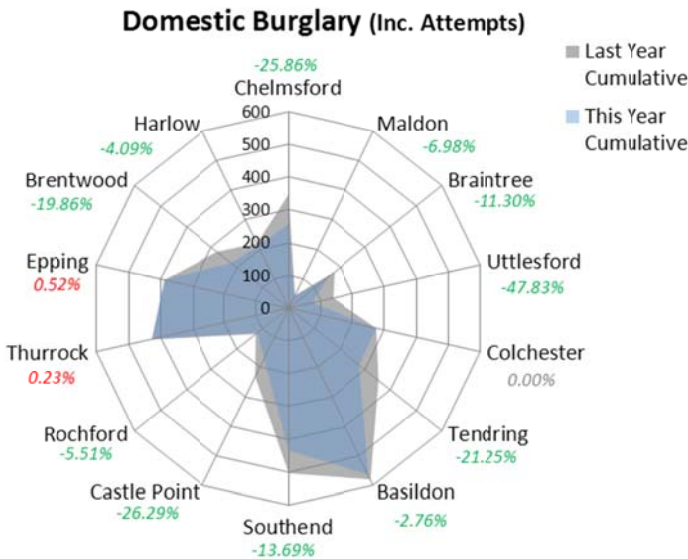
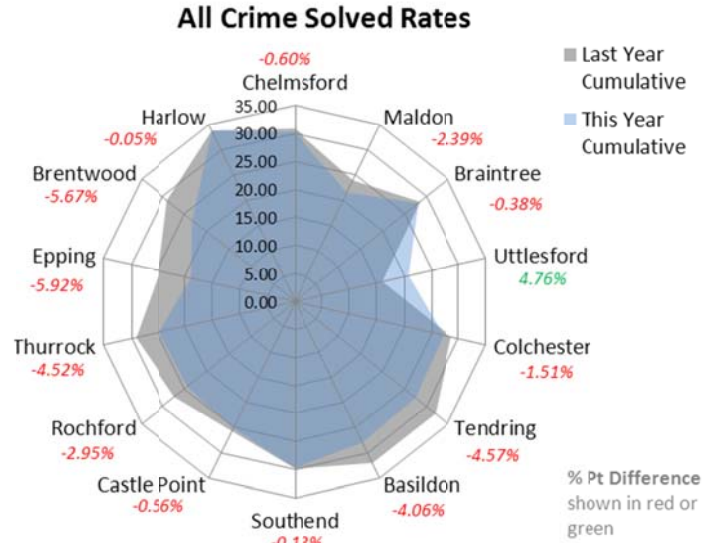
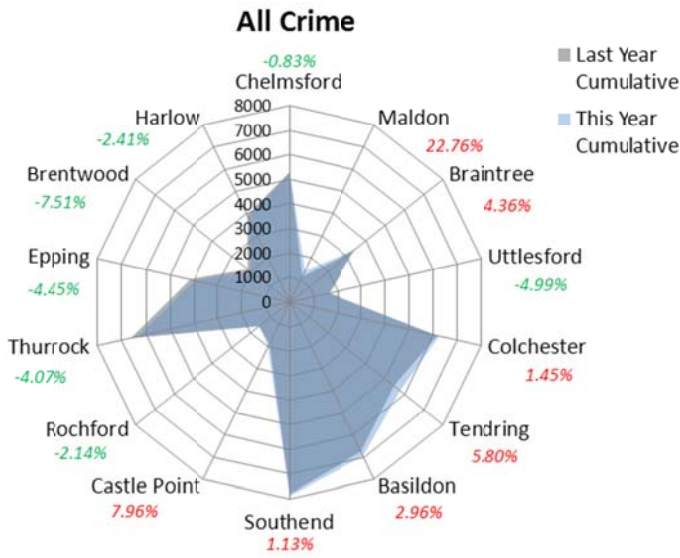
2. Current Position





Strategic Change Management Department: Performance Summary

Essex Police Performance Summary: To October 2014

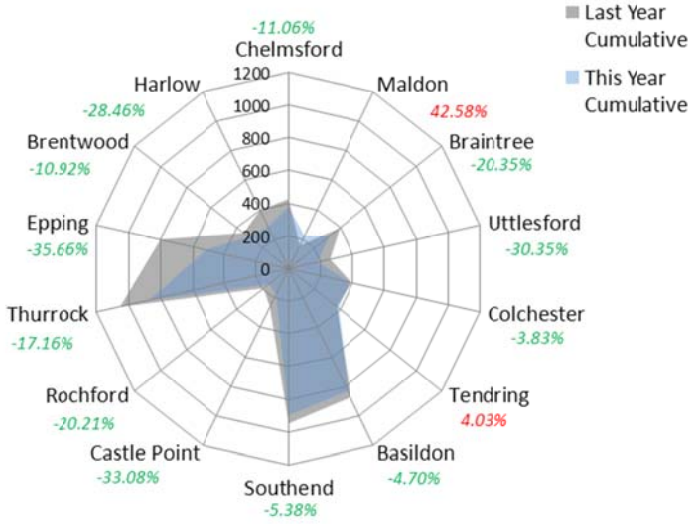




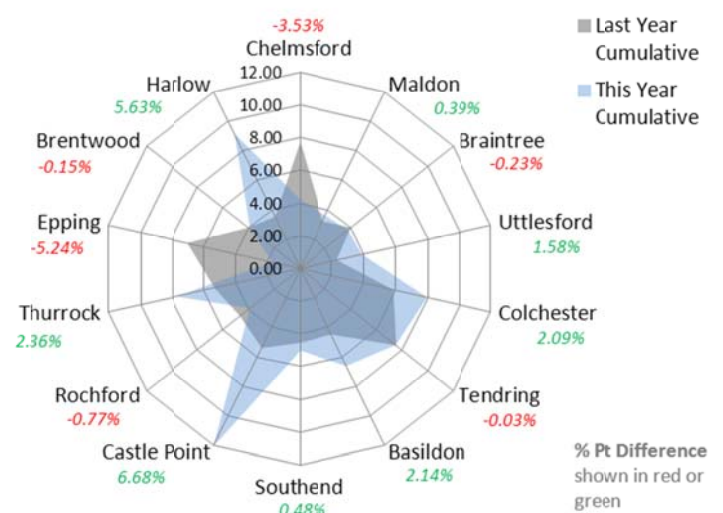
Strategic Change Management Department: Performance Summary

Essex Police Performance Summary: To October 2014

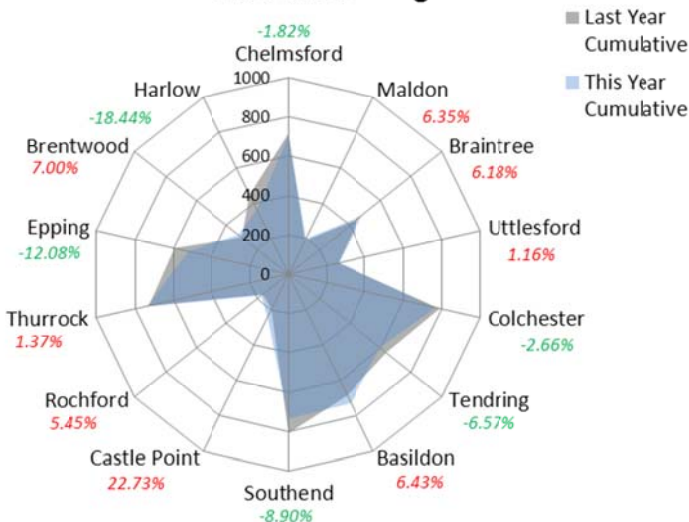
Vehicle Crime (Excl. Interference)



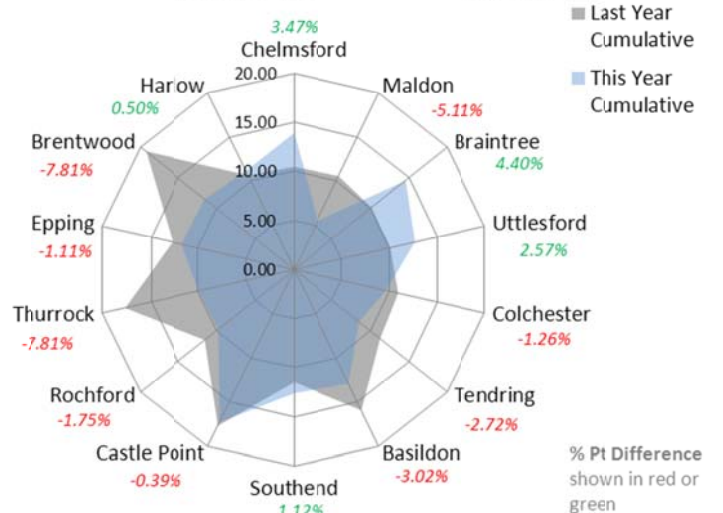
Vehicle Crime (Excl. Interference) Solved rates



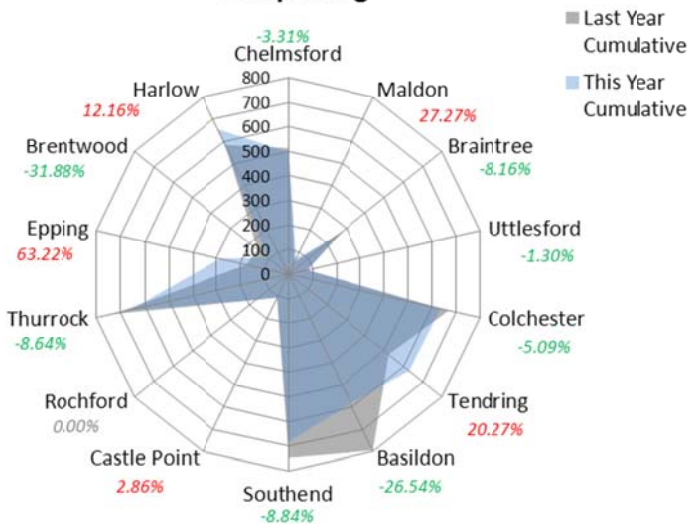
Other Theft & Handling



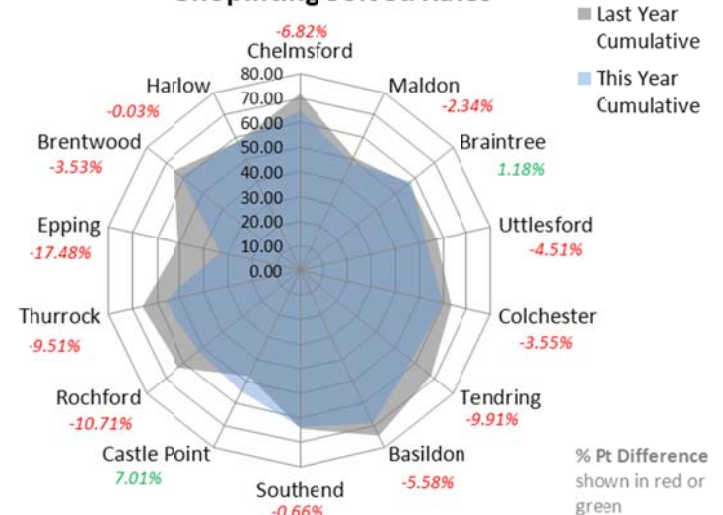
Other Theft & Handling Solved Rates



Shoplifting



Shoplifting Solved Rates

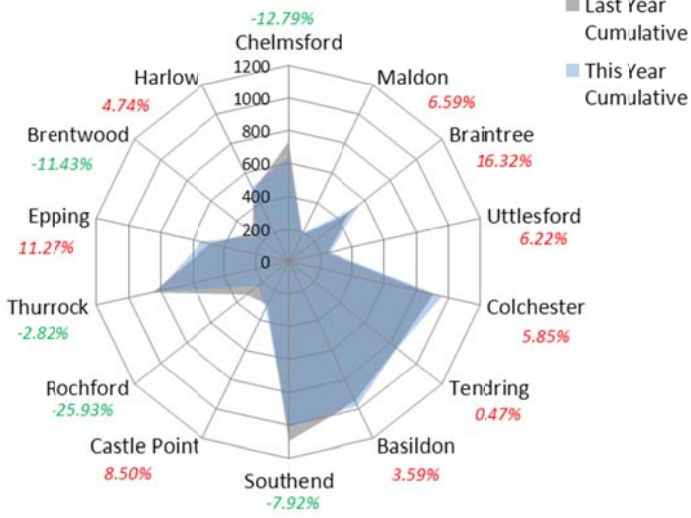




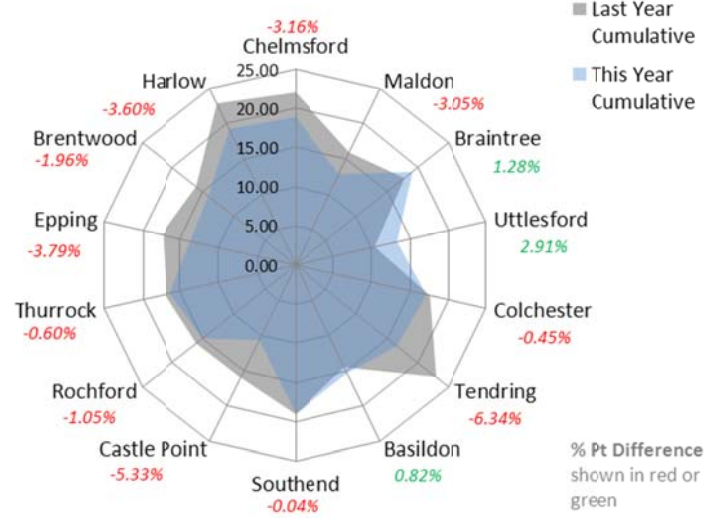
Strategic Change Management Department: Performance Summary

Essex Police Performance Summary: To October 2014

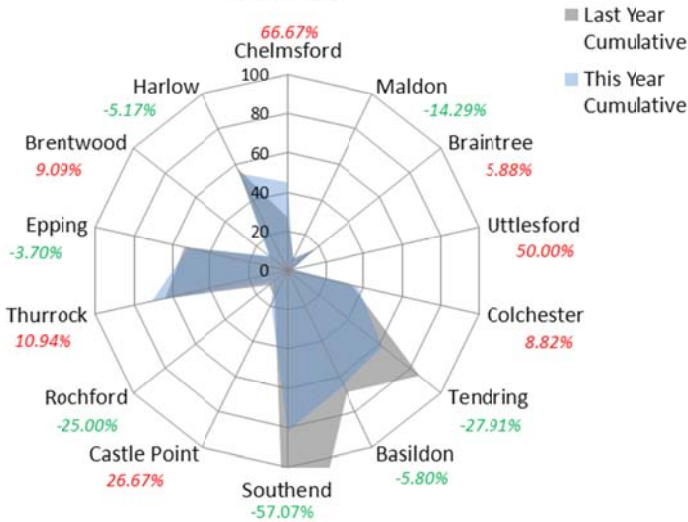
Criminal Damage



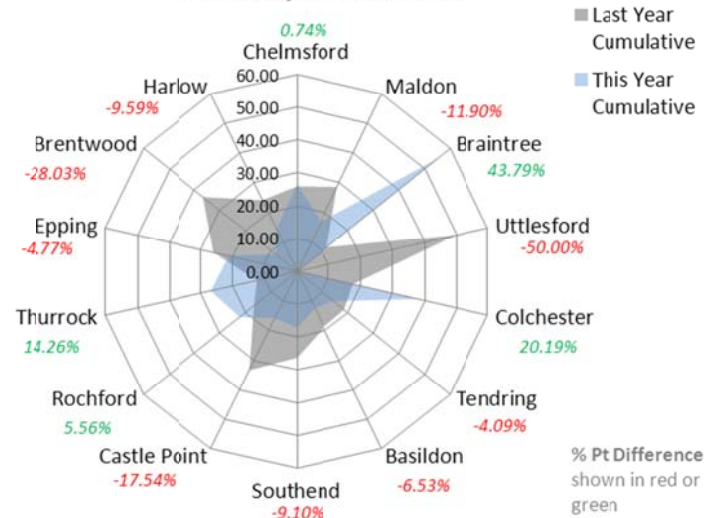
Criminal Damage Solved Rates



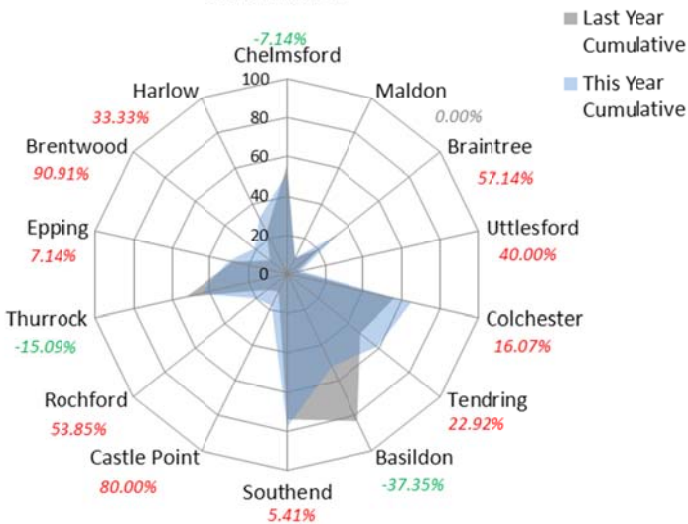
Robbery



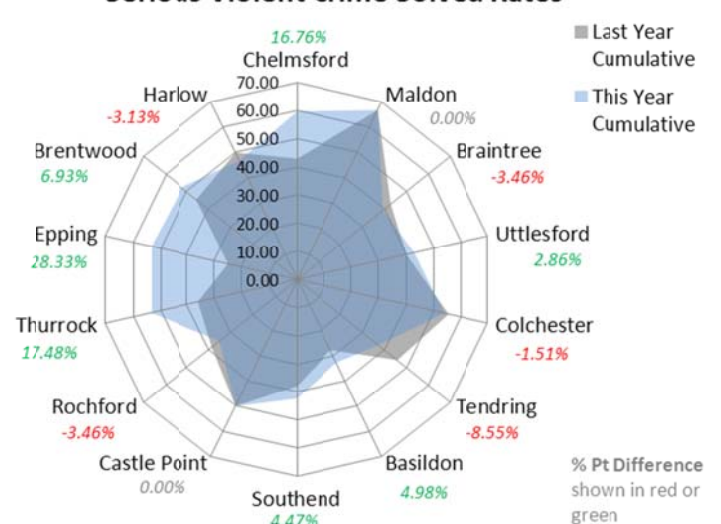
Robbery Solved Rates



Serious Violent Crime



Serious Violent Crime Solved Rates

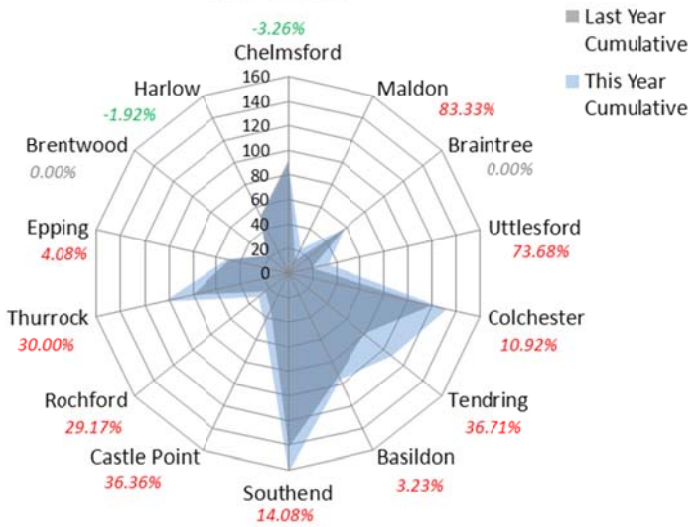




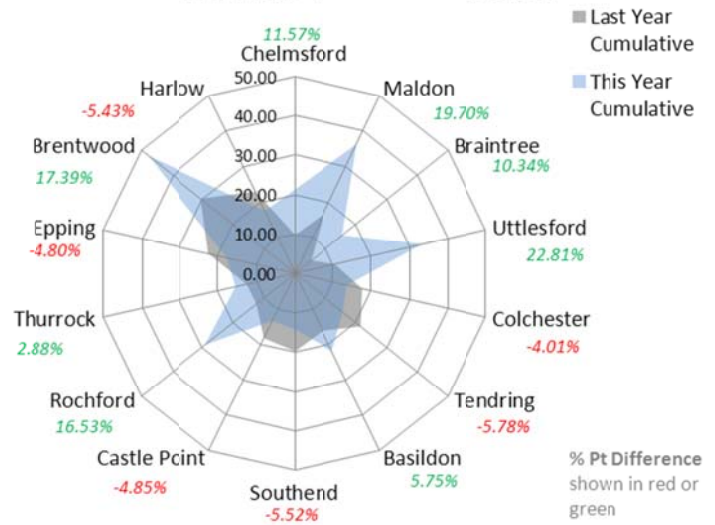
Strategic Change Management Department: Performance Summary

Essex Police Performance Summary: To October 2014

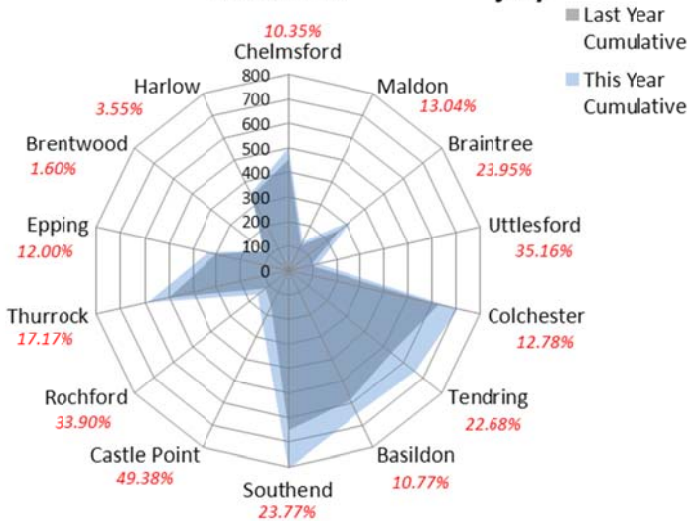
Serious Sexual Crime



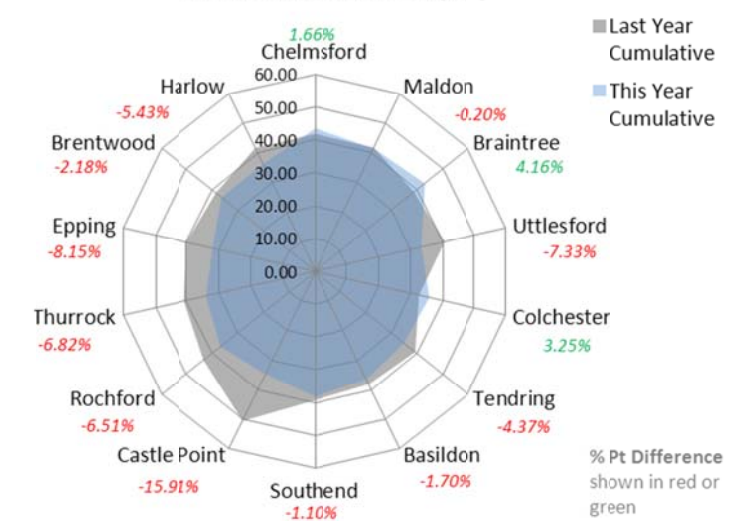
Serious Sexual Crime Solved Rates



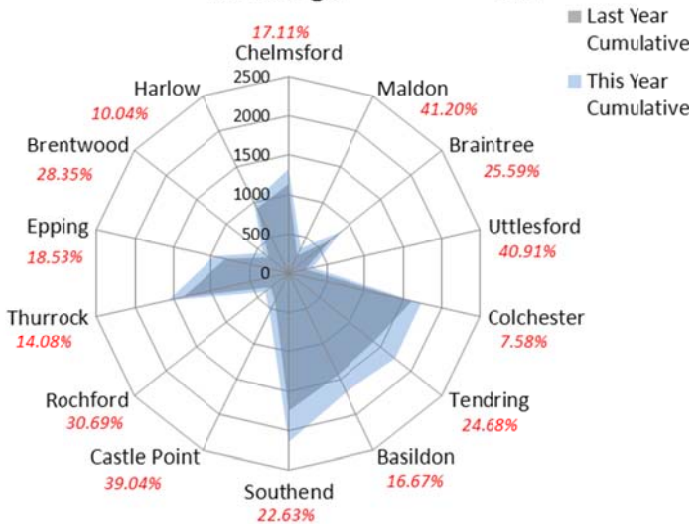
Assault with Less Serious Injury



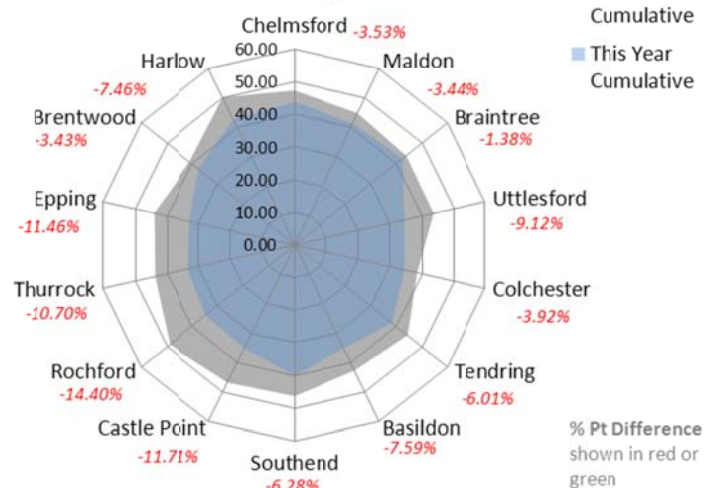
Assault with Less Serious Injury Solved Rates



Other Violence Against the Person



Other Violence Against the Person Solved Rates

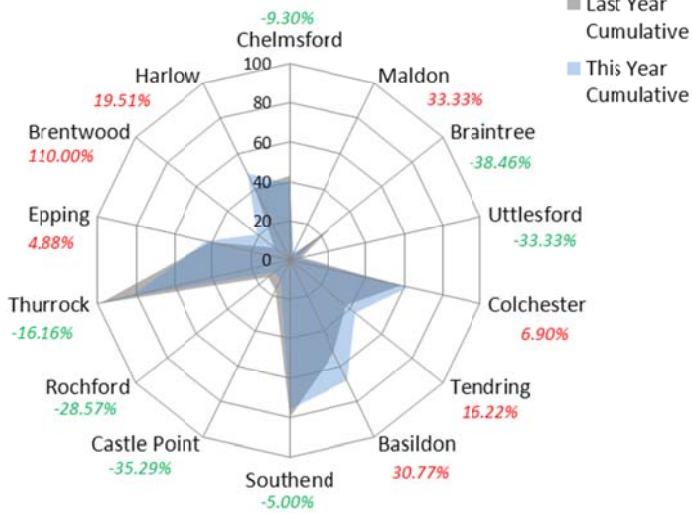




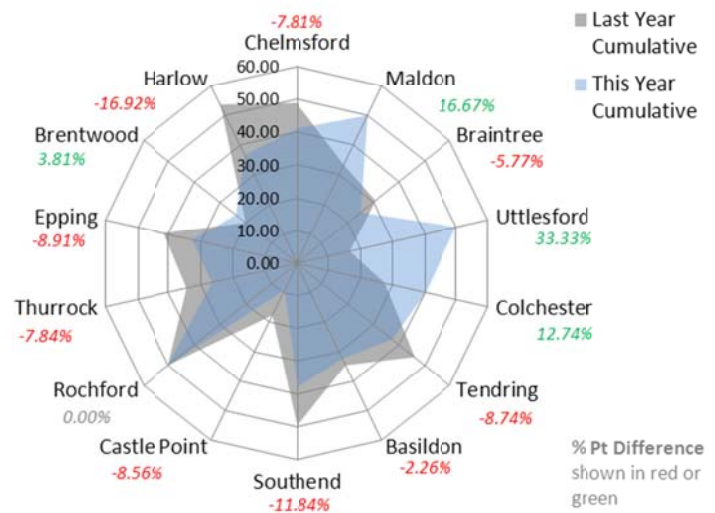
Strategic Change Management Department: Performance Summary

Essex Police Performance Summary: To October 2014

Racially Aggravated Crime

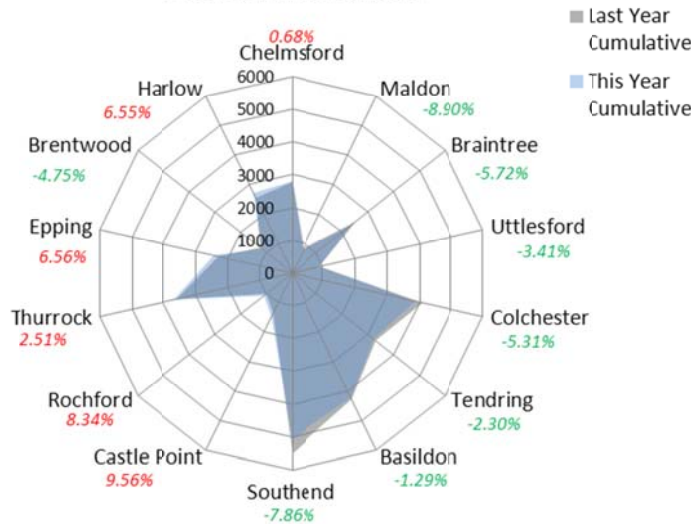


Racially Aggravated Crime Solved Rates



% Pt Difference shown in red or green

Anti Social Behaviour





Strategic Change Management Department: Performance Summary

Essex Police Performance Summary: To October 2014

Force Performance Summary

| Offences | Last Year Cumulative | This Year Cumulative | Year on Year # Difference | Year on Year % Difference | Last Year Rolling 12M | This Year Rolling 12 M | Rolling 12M # Difference | Rolling 12M % Difference |
|-----------------------------------|----------------------|----------------------|---------------------------|---------------------------|-----------------------|------------------------|--------------------------|--------------------------|
| All Crime | 58512 | 58893 | 381 | 0.7 | 99217 | 99845 | 628 | 0.6 |
| Domestic Burglary incl. Attempts | 4091 | 3623 | -468 | -11.4 | 7772 | 7020 | -752 | -9.7 |
| Other Burglary incl. Attempts | 3616 | 3761 | 145 | 4.0 | 6268 | 6336 | 68 | 1.1 |
| Vehicle Crime excl. Inter'ce | 6886 | 5919 | -967 | -14.0 | 11947 | 10743 | -1204 | -10.1 |
| Theft from Vehicles | 5236 | 4228 | -1008 | -19.3 | 9023 | 7891 | -1132 | -12.5 |
| Other Theft & Handling | 7120 | 7028 | -92 | -1.3 | 11752 | 11646 | -106 | -0.9 |
| Shoplifting | 5683 | 5489 | -194 | -3.4 | 9545 | 9497 | -48 | -0.5 |
| Criminal Damage | 8177 | 8152 | -25 | -0.3 | 13991 | 14062 | 71 | 0.5 |
| Robbery | 647 | 536 | -111 | -17.2 | 1153 | 952 | -201 | -17.4 |
| Serious Violent Crime | 491 | 521 | 30 | 6.1 | 789 | 899 | 110 | 13.9 |
| Serious Sexual Crime | 878 | 1008 | 130 | 14.8 | 1349 | 1592 | 243 | 18.0 |
| Assault with Less Serious Injury | 4873 | 5706 | 833 | 17.1 | 8066 | 9216 | 1150 | 14.3 |
| Other Violence Against the Person | 12662 | 15101 | 2439 | 19.3 | 20630 | 24351 | 3721 | 18.0 |
| Racially-Aggravated Crime | 530 | 534 | 4 | 0.8 | 816 | 841 | 25 | 3.1 |
| Anti-Social Behaviour | 36366 | 36002 | -364 | -1.0 | 57265 | 53574 | -3691 | -6.4 |

| Outcomes | Last Year Cumulative | This Year Cumulative | Year on Year # Difference | Year on Year % Difference | Last Year Rolling 12M | This Year Rolling 12 M | Rolling 12M # Difference | Rolling 12M % Difference |
|-----------------------------------|----------------------|----------------------|---------------------------|---------------------------|-----------------------|------------------------|--------------------------|--------------------------|
| All Crime | 17359 | 16086 | -1273 | -7.3 | 28732 | 27709 | -1023 | -3.6 |
| Domestic Burglary incl. Attempts | 854 | 633 | -221 | -25.9 | 1164 | 931 | -233 | -20.0 |
| Other Burglary incl. Attempts | 236 | 187 | -49 | -20.8 | 416 | 334 | -82 | -19.7 |
| Vehicle Crime excl. Inter'ce | 357 | 344 | -13 | -3.6 | 565 | 581 | 16 | 2.8 |
| Theft from Vehicles | 139 | 140 | 1 | 0.7 | 230 | 229 | -1 | -0.4 |
| Other Theft & Handling | 919 | 834 | -85 | -9.2 | 1500 | 1488 | -12 | -0.8 |
| Shoplifting | 3716 | 3247 | -469 | -12.6 | 6139 | 5885 | -254 | -4.1 |
| Criminal Damage | 1499 | 1357 | -142 | -9.5 | 2485 | 2316 | -169 | -6.8 |
| Robbery | 144 | 112 | -32 | -22.2 | 220 | 190 | -30 | -13.6 |
| Serious Violent Crime | 198 | 242 | 44 | 22.2 | 319 | 401 | 82 | 25.7 |
| Serious Sexual Crime | 149 | 187 | 38 | 25.5 | 215 | 316 | 101 | 47.0 |
| Assault with Less Serious Injury | 1922 | 2105 | 183 | 9.5 | 3273 | 3516 | 243 | 7.4 |
| Other Violence Against the Person | 5653 | 5722 | 69 | 1.2 | 9349 | 9623 | 274 | 2.9 |
| Racially-Aggravated Crime | 209 | 185 | -24 | -11.5 | 299 | 296 | -3 | -1.0 |

| Solved Rates % | Last Year Cumulative | This Year Cumulative | Year on Year % Point Difference | Last Year Rolling 12M | This Year Rolling 12 M | Rolling 12M % Point Difference |
|-----------------------------------|----------------------|----------------------|---------------------------------|-----------------------|------------------------|--------------------------------|
| All Crime | 29.67 | 27.31 | -2.35 | 28.96 | 27.75 | -1.2 |
| Domestic Burglary incl. Attempts | 20.88 | 17.47 | -3.40 | 14.98 | 13.26 | -1.7 |
| Other Burglary incl. Attempts | 6.53 | 4.97 | -1.55 | 6.64 | 5.27 | -1.4 |
| Vehicle Crime excl. Inter'ce | 5.18 | 5.81 | 0.63 | 4.73 | 5.41 | 0.7 |
| Theft from Vehicles | 2.65 | 3.31 | 0.66 | 2.55 | 2.90 | 0.4 |
| Other Theft & Handling | 12.91 | 11.87 | -1.04 | 12.76 | 12.78 | 0.0 |
| Shoplifting | 65.39 | 59.15 | -6.23 | 64.32 | 61.97 | -2.3 |
| Criminal Damage | 18.33 | 16.65 | -1.69 | 17.76 | 16.47 | -1.3 |
| Robbery | 22.26 | 20.90 | -1.36 | 19.08 | 19.96 | 0.9 |
| Serious Violent Crime | 40.33 | 46.45 | 6.12 | 40.43 | 44.61 | 4.2 |
| Serious Sexual Crime | 16.97 | 18.55 | 1.58 | 15.94 | 19.85 | 3.9 |
| Assault with Less Serious Injury | 39.44 | 36.89 | -2.55 | 40.58 | 38.15 | -2.4 |
| Other Violence Against the Person | 44.65 | 37.89 | -6.75 | 45.32 | 39.52 | -5.8 |
| Racially-Aggravated Crime | 39.43 | 34.64 | -4.79 | 36.64 | 35.20 | -1.4 |



Strategic Change Management Department: Performance Summary

Essex Police Performance Summary: To October 2014

Chelmsford Performance Summary

| Offences | Last Year Cumulative | This Year Cumulative | Year on Year # Difference | Year on Year % Difference | Last Year Rolling 12M | This Year Rolling 12 M | Rolling 12M # Difference | Rolling 12M % Difference |
|-----------------------------------|----------------------|----------------------|---------------------------|---------------------------|-----------------------|------------------------|--------------------------|--------------------------|
| All Crime | 5297 | 5253 | -44 | -0.8 | 8652 | 8876 | 224 | 2.6 |
| Domestic Burglary incl. Attempts | 348 | 258 | -90 | -25.9 | 592 | 490 | -102 | -17.2 |
| Other Burglary incl. Attempts | 296 | 408 | 112 | 37.8 | 524 | 680 | 156 | 29.8 |
| Vehicle Crime excl. Inter'ce | 425 | 378 | -47 | -11.1 | 715 | 667 | -48 | -6.7 |
| Theft from Vehicles | 322 | 267 | -55 | -17.1 | 525 | 463 | -62 | -11.8 |
| Other Theft & Handling | 716 | 703 | -13 | -1.8 | 1202 | 1128 | -74 | -6.2 |
| Shoplifting | 513 | 496 | -17 | -3.3 | 888 | 903 | 15 | 1.7 |
| Criminal Damage | 735 | 641 | -94 | -12.8 | 1160 | 1159 | -1 | -0.1 |
| Robbery | 27 | 45 | 18 | 66.7 | 54 | 74 | 20 | 37.0 |
| Serious Violent Crime | 56 | 52 | -4 | -7.1 | 81 | 93 | 12 | 14.8 |
| Serious Sexual Crime | 92 | 89 | -3 | -3.3 | 133 | 140 | 7 | 5.3 |
| Assault with Less Serious Injury | 454 | 501 | 47 | 10.4 | 748 | 805 | 57 | 7.6 |
| Other Violence Against the Person | 1134 | 1328 | 194 | 17.1 | 1829 | 2137 | 308 | 16.8 |
| Racially-Aggravated Crime | 43 | 39 | -4 | -9.3 | 72 | 62 | -10 | -13.9 |

| | | | | | | | | |
|-----------------------|------|------|----|-----|------|------|------|------|
| Anti-Social Behaviour | 2789 | 2808 | 19 | 0.7 | 4529 | 4210 | -319 | -7.0 |
|-----------------------|------|------|----|-----|------|------|------|------|

| Outcomes | Last Year Cumulative | This Year Cumulative | Year on Year # Difference | Year on Year % Difference | Last Year Rolling 12M | This Year Rolling 12 M | Rolling 12M # Difference | Rolling 12M % Difference |
|-----------------------------------|----------------------|----------------------|---------------------------|---------------------------|-----------------------|------------------------|--------------------------|--------------------------|
| All Crime | 1632 | 1587 | -45 | -2.8 | 2710 | 2746 | 36 | 1.3 |
| Domestic Burglary incl. Attempts | 46 | 39 | -7 | -15.2 | 67 | 52 | -15 | -22.4 |
| Other Burglary incl. Attempts | 16 | 24 | 8 | 50.0 | 30 | 43 | 13 | 43.3 |
| Vehicle Crime excl. Inter'ce | 33 | 16 | -17 | -51.5 | 45 | 33 | -12 | -26.7 |
| Theft from Vehicles | 20 | 3 | -17 | -85.0 | 24 | 9 | -15 | -62.5 |
| Other Theft & Handling | 75 | 98 | 23 | 30.7 | 134 | 167 | 33 | 24.6 |
| Shoplifting | 368 | 322 | -46 | -12.5 | 632 | 616 | -16 | -2.5 |
| Criminal Damage | 162 | 121 | -41 | -25.3 | 251 | 225 | -26 | -10.4 |
| Robbery | 7 | 12 | 5 | 71.4 | 11 | 15 | 4 | 36.4 |
| Serious Violent Crime | 24 | 31 | 7 | 29.2 | 40 | 49 | 9 | 22.5 |
| Serious Sexual Crime | 9 | 19 | 10 | 111.1 | 12 | 27 | 15 | 125.0 |
| Assault with Less Serious Injury | 190 | 218 | 28 | 14.7 | 333 | 362 | 29 | 8.7 |
| Other Violence Against the Person | 537 | 582 | 45 | 8.4 | 883 | 944 | 61 | 6.9 |
| Racially-Aggravated Crime | 21 | 16 | -5 | -23.8 | 30 | 24 | -6 | -20.0 |

| Solved Rates % | Last Year Cumulative | This Year Cumulative | Year on Year % Point Difference | Last Year Rolling 12M | This Year Rolling 12 M | Rolling 12M % Point Difference |
|-----------------------------------|----------------------|----------------------|---------------------------------|-----------------------|------------------------|--------------------------------|
| All Crime | 30.81 | 30.21 | -0.6 | 31.32 | 30.94 | -0.4 |
| Domestic Burglary incl. Attempts | 13.22 | 15.12 | 1.9 | 11.32 | 10.61 | -0.7 |
| Other Burglary incl. Attempts | 5.41 | 5.88 | 0.5 | 5.73 | 6.32 | 0.6 |
| Vehicle Crime excl. Inter'ce | 7.76 | 4.23 | -3.5 | 6.29 | 4.95 | -1.3 |
| Theft from Vehicles | 6.21 | 1.12 | -5.1 | 4.57 | 1.94 | -2.6 |
| Other Theft & Handling | 10.47 | 13.94 | 3.5 | 11.15 | 14.80 | 3.7 |
| Shoplifting | 71.73 | 64.92 | -6.8 | 71.17 | 68.22 | -3.0 |
| Criminal Damage | 22.04 | 18.88 | -3.2 | 21.64 | 19.41 | -2.2 |
| Robbery | 25.93 | 26.67 | 0.7 | 20.37 | 20.27 | -0.1 |
| Serious Violent Crime | 42.86 | 59.62 | 16.8 | 49.38 | 52.69 | 3.3 |
| Serious Sexual Crime | 9.78 | 21.35 | 11.6 | 9.02 | 19.29 | 10.3 |
| Assault with Less Serious Injury | 41.85 | 43.51 | 1.7 | 44.52 | 44.97 | 0.5 |
| Other Violence Against the Person | 47.35 | 43.83 | -3.5 | 48.28 | 44.17 | -4.1 |
| Racially-Aggravated Crime | 48.84 | 41.03 | -7.8 | 41.67 | 38.71 | -3.0 |



Strategic Change Management Department: Performance Summary

Essex Police Performance Summary: To October 2014

Braintree Performance Summary

| Offences | Last Year Cumulative | This Year Cumulative | Year on Year # Difference | Year on Year % Difference | Last Year Rolling 12M | This Year Rolling 12 M | Rolling 12M # Difference | Rolling 12M % Difference |
|-----------------------------------|----------------------|----------------------|---------------------------|---------------------------|-----------------------|------------------------|--------------------------|--------------------------|
| All Crime | 3325 | 3470 | 145 | 4.4 | 5674 | 5799 | 125 | 2.2 |
| Domestic Burglary incl. Attempts | 177 | 157 | -20 | -11.3 | 372 | 325 | -47 | -12.6 |
| Other Burglary incl. Attempts | 295 | 329 | 34 | 11.5 | 530 | 548 | 18 | 3.4 |
| Vehicle Crime excl. Inter'ce | 398 | 317 | -81 | -20.4 | 648 | 603 | -45 | -6.9 |
| Theft from Vehicles | 339 | 254 | -85 | -25.1 | 539 | 471 | -68 | -12.6 |
| Other Theft & Handling | 453 | 481 | 28 | 6.2 | 738 | 778 | 40 | 5.4 |
| Shoplifting | 282 | 259 | -23 | -8.2 | 446 | 427 | -19 | -4.3 |
| Criminal Damage | 478 | 556 | 78 | 16.3 | 856 | 923 | 67 | 7.8 |
| Robbery | 17 | 18 | 1 | 5.9 | 30 | 26 | -4 | -13.3 |
| Serious Violent Crime | 21 | 33 | 12 | 57.1 | 30 | 50 | 20 | 66.7 |
| Serious Sexual Crime | 58 | 58 | 0 | 0.0 | 85 | 91 | 6 | 7.1 |
| Assault with Less Serious Injury | 263 | 326 | 63 | 24.0 | 452 | 518 | 66 | 14.6 |
| Other Violence Against the Person | 676 | 849 | 173 | 25.6 | 1159 | 1369 | 210 | 18.1 |
| Racially-Aggravated Crime | 26 | 16 | -10 | -38.5 | 41 | 25 | -16 | -39.0 |

| | | | | | | | | |
|-----------------------|------|------|------|------|------|------|------|------|
| Anti-Social Behaviour | 2533 | 2388 | -145 | -5.7 | 3973 | 3608 | -365 | -9.2 |
|-----------------------|------|------|------|------|------|------|------|------|

| Outcomes | Last Year Cumulative | This Year Cumulative | Year on Year # Difference | Year on Year % Difference | Last Year Rolling 12M | This Year Rolling 12 M | Rolling 12M # Difference | Rolling 12M % Difference |
|-----------------------------------|----------------------|----------------------|---------------------------|---------------------------|-----------------------|------------------------|--------------------------|--------------------------|
| All Crime | 947 | 975 | 28 | 3.0 | 1645 | 1552 | -93 | -5.7 |
| Domestic Burglary incl. Attempts | 88 | 57 | -31 | -35.2 | 110 | 73 | -37 | -33.6 |
| Other Burglary incl. Attempts | 14 | 6 | -8 | -57.1 | 24 | 12 | -12 | -50.0 |
| Vehicle Crime excl. Inter'ce | 16 | 12 | -4 | -25.0 | 29 | 24 | -5 | -17.2 |
| Theft from Vehicles | 6 | 4 | -2 | -33.3 | 8 | 6 | -2 | -25.0 |
| Other Theft & Handling | 46 | 70 | 24 | 52.2 | 79 | 110 | 31 | 39.2 |
| Shoplifting | 160 | 150 | -10 | -6.3 | 263 | 240 | -23 | -8.7 |
| Criminal Damage | 85 | 106 | 21 | 24.7 | 150 | 167 | 17 | 11.3 |
| Robbery | 2 | 10 | 8 | 400.0 | 4 | 11 | 7 | 175.0 |
| Serious Violent Crime | 9 | 13 | 4 | 44.4 | 15 | 23 | 8 | 53.3 |
| Serious Sexual Crime | 3 | 9 | 6 | 200.0 | 4 | 12 | 8 | 200.0 |
| Assault with Less Serious Injury | 102 | 140 | 38 | 37.3 | 197 | 224 | 27 | 13.7 |
| Other Violence Against the Person | 296 | 360 | 64 | 21.6 | 561 | 603 | 42 | 7.5 |
| Racially-Aggravated Crime | 8 | 4 | -4 | -50.0 | 13 | 10 | -3 | -23.1 |

| Solved Rates % | Last Year Cumulative | This Year Cumulative | Year on Year % Point Difference | Last Year Rolling 12M | This Year Rolling 12 M | Rolling 12M % Point Difference |
|-----------------------------------|----------------------|----------------------|---------------------------------|-----------------------|------------------------|--------------------------------|
| All Crime | 28.48 | 28.10 | -0.4 | 28.99 | 26.76 | -2.2 |
| Domestic Burglary incl. Attempts | 49.72 | 36.31 | -13.4 | 29.57 | 22.46 | -7.1 |
| Other Burglary incl. Attempts | 4.75 | 1.82 | -2.9 | 4.53 | 2.19 | -2.3 |
| Vehicle Crime excl. Inter'ce | 4.02 | 3.79 | -0.2 | 4.48 | 3.98 | -0.5 |
| Theft from Vehicles | 1.77 | 1.57 | -0.2 | 1.48 | 1.27 | -0.2 |
| Other Theft & Handling | 10.15 | 14.55 | 4.4 | 10.70 | 14.14 | 3.4 |
| Shoplifting | 56.74 | 57.92 | 1.2 | 58.97 | 56.21 | -2.8 |
| Criminal Damage | 17.78 | 19.06 | 1.3 | 17.52 | 18.09 | 0.6 |
| Robbery | 11.76 | 55.56 | 43.8 | 13.33 | 42.31 | 29.0 |
| Serious Violent Crime | 42.86 | 39.39 | -3.5 | 50.00 | 46.00 | -4.0 |
| Serious Sexual Crime | 5.17 | 15.52 | 10.3 | 4.71 | 13.19 | 8.5 |
| Assault with Less Serious Injury | 38.78 | 42.94 | 4.2 | 43.58 | 43.24 | -0.3 |
| Other Violence Against the Person | 43.79 | 42.40 | -1.4 | 48.40 | 44.05 | -4.4 |
| Racially-Aggravated Crime | 30.77 | 25.00 | -5.8 | 31.71 | 40.00 | 8.3 |



Strategic Change Management Department: Performance Summary

Essex Police Performance Summary: To October 2014

Uttlesford Performance Summary

| Offences | Last Year Cumulative | This Year Cumulative | Year on Year # Difference | Year on Year % Difference | Last Year Rolling 12M | This Year Rolling 12 M | Rolling 12M # Difference | Rolling 12M % Difference |
|-----------------------------------|----------------------|----------------------|---------------------------|---------------------------|-----------------------|------------------------|--------------------------|--------------------------|
| All Crime | 1663 | 1580 | -83 | -5.0 | 2809 | 2665 | -144 | -5.1 |
| Domestic Burglary incl. Attempts | 138 | 72 | -66 | -47.8 | 218 | 185 | -33 | -15.1 |
| Other Burglary incl. Attempts | 303 | 233 | -70 | -23.1 | 503 | 380 | -123 | -24.5 |
| Vehicle Crime excl.Inter'ce | 257 | 179 | -78 | -30.4 | 421 | 359 | -62 | -14.7 |
| Theft from Vehicles | 201 | 139 | -62 | -30.8 | 338 | 298 | -40 | -11.8 |
| Other Theft & Handling | 258 | 261 | 3 | 1.2 | 393 | 440 | 47 | 12.0 |
| Shoplifting | 77 | 76 | -1 | -1.3 | 140 | 128 | -12 | -8.6 |
| Criminal Damage | 241 | 256 | 15 | 6.2 | 448 | 406 | -42 | -9.4 |
| Robbery | 2 | 3 | 1 | 50.0 | 7 | 8 | 1 | 14.3 |
| Serious Violent Crime | 5 | 7 | 2 | 40.0 | 14 | 12 | -2 | -14.3 |
| Serious Sexual Crime | 19 | 33 | 14 | 73.7 | 30 | 46 | 16 | 53.3 |
| Assault with Less Serious Injury | 91 | 123 | 32 | 35.2 | 173 | 188 | 15 | 8.7 |
| Other Violence Against the Person | 220 | 310 | 90 | 40.9 | 380 | 469 | 89 | 23.4 |
| Racially-Aggravated Crime | 6 | 4 | -2 | -33.3 | 6 | 10 | 4 | 66.7 |

| | | | | | | | | |
|-----------------------|-----|-----|-----|------|------|------|-----|------|
| Anti-Social Behaviour | 910 | 879 | -31 | -3.4 | 1347 | 1280 | -67 | -5.0 |
|-----------------------|-----|-----|-----|------|------|------|-----|------|

| Outcomes | Last Year Cumulative | This Year Cumulative | Year on Year # Difference | Year on Year % Difference | Last Year Rolling 12M | This Year Rolling 12 M | Rolling 12M # Difference | Rolling 12M % Difference |
|-----------------------------------|----------------------|----------------------|---------------------------|---------------------------|-----------------------|------------------------|--------------------------|--------------------------|
| All Crime | 266 | 328 | 62 | 23.3 | 472 | 530 | 58 | 12.3 |
| Domestic Burglary incl. Attempts | 12 | 25 | 13 | 108.3 | 12 | 40 | 28 | 233.3 |
| Other Burglary incl. Attempts | 1 | 7 | 6 | 600.0 | 2 | 9 | 7 | 350.0 |
| Vehicle Crime excl.Inter'ce | 6 | 7 | 1 | 16.7 | 7 | 11 | 4 | 57.1 |
| Theft from Vehicles | 0 | 0 | 0 | #DIV/0! | 0 | 0 | 0 | #DIV/0! |
| Other Theft & Handling | 26 | 33 | 7 | 26.9 | 37 | 54 | 17 | 45.9 |
| Shoplifting | 44 | 40 | -4 | -9.1 | 63 | 59 | -4 | -6.3 |
| Criminal Damage | 25 | 34 | 9 | 36.0 | 45 | 56 | 11 | 24.4 |
| Robbery | 1 | 0 | -1 | -100.0 | 1 | 3 | 2 | 200.0 |
| Serious Violent Crime | 2 | 3 | 1 | 50.0 | 7 | 6 | -1 | -14.3 |
| Serious Sexual Crime | 2 | 11 | 9 | 450.0 | 4 | 15 | 11 | 275.0 |
| Assault with Less Serious Injury | 37 | 41 | 4 | 10.8 | 85 | 74 | -11 | -12.9 |
| Other Violence Against the Person | 96 | 107 | 11 | 11.5 | 182 | 183 | 1 | 0.5 |
| Racially-Aggravated Crime | 1 | 2 | 1 | 100.0 | 1 | 4 | 3 | 300.0 |

| Solved Rates % | Last Year Cumulative | This Year Cumulative | Year on Year % Point Difference | Last Year Rolling 12M | This Year Rolling 12 M | Rolling 12M % Point Difference |
|-----------------------------------|----------------------|----------------------|---------------------------------|-----------------------|------------------------|--------------------------------|
| All Crime | 16.00 | 20.76 | 4.8 | 16.80 | 19.89 | 3.1 |
| Domestic Burglary incl. Attempts | 8.70 | 34.72 | 26.0 | 5.50 | 21.62 | 16.1 |
| Other Burglary incl. Attempts | 0.33 | 3.00 | 2.7 | 0.40 | 2.37 | 2.0 |
| Vehicle Crime excl.Inter'ce | 2.33 | 3.91 | 1.6 | 1.66 | 3.06 | 1.4 |
| Theft from Vehicles | 0.00 | 0.00 | 0.0 | 0.00 | 0.00 | 0.0 |
| Other Theft & Handling | 10.08 | 12.64 | 2.6 | 9.41 | 12.27 | 2.9 |
| Shoplifting | 57.14 | 52.63 | -4.5 | 45.00 | 46.09 | 1.1 |
| Criminal Damage | 10.37 | 13.28 | 2.9 | 10.04 | 13.79 | 3.7 |
| Robbery | 50.00 | 0.00 | -50.0 | 14.29 | 37.50 | 23.2 |
| Serious Violent Crime | 40.00 | 42.86 | 2.9 | 50.00 | 50.00 | 0.0 |
| Serious Sexual Crime | 10.53 | 33.33 | 22.8 | 13.33 | 32.61 | 19.3 |
| Assault with Less Serious Injury | 40.66 | 33.33 | -7.3 | 49.13 | 39.36 | -9.8 |
| Other Violence Against the Person | 43.64 | 34.52 | -9.1 | 47.89 | 39.02 | -8.9 |
| Racially-Aggravated Crime | 16.67 | 50.00 | 33.3 | 16.67 | 40.00 | 23.3 |



Strategic Change Management Department: Performance Summary

Essex Police Performance Summary: To October 2014

Maldon Performance Summary

| Offences | Last Year Cumulative | This Year Cumulative | Year on Year # Difference | Year on Year % Difference | Last Year Rolling 12M | This Year Rolling 12 M | Rolling 12M # Difference | Rolling 12M % Difference |
|-----------------------------------|----------------------|----------------------|---------------------------|---------------------------|-----------------------|------------------------|--------------------------|--------------------------|
| All Crime | 1151 | 1413 | 262 | 22.8 | 2018 | 2345 | 327 | 16.2 |
| Domestic Burglary incl. Attempts | 43 | 40 | -3 | -7.0 | 79 | 88 | 9 | 11.4 |
| Other Burglary incl. Attempts | 98 | 145 | 47 | 48.0 | 181 | 228 | 47 | 26.0 |
| Vehicle Crime excl.Inter'ce | 155 | 221 | 66 | 42.6 | 319 | 363 | 44 | 13.8 |
| Theft from Vehicles | 114 | 164 | 50 | 43.9 | 237 | 260 | 23 | 9.7 |
| Other Theft & Handling | 189 | 201 | 12 | 6.3 | 344 | 362 | 18 | 5.2 |
| Shoplifting | 55 | 70 | 15 | 27.3 | 98 | 115 | 17 | 17.3 |
| Criminal Damage | 182 | 194 | 12 | 6.6 | 304 | 361 | 57 | 18.8 |
| Robbery | 7 | 6 | -1 | -14.3 | 11 | 11 | 0 | 0.0 |
| Serious Violent Crime | 9 | 9 | 0 | 0.0 | 16 | 20 | 4 | 25.0 |
| Serious Sexual Crime | 12 | 22 | 10 | 83.3 | 16 | 32 | 16 | 100.0 |
| Assault with Less Serious Injury | 115 | 130 | 15 | 13.0 | 184 | 187 | 3 | 1.6 |
| Other Violence Against the Person | 250 | 353 | 103 | 41.2 | 419 | 534 | 115 | 27.4 |
| Racially-Aggravated Crime | 3 | 4 | 1 | 33.3 | 7 | 12 | 5 | 71.4 |

| | | | | | | | | |
|-----------------------|-----|-----|-----|------|------|------|------|-------|
| Anti-Social Behaviour | 809 | 737 | -72 | -8.9 | 1302 | 1138 | -164 | -12.6 |
|-----------------------|-----|-----|-----|------|------|------|------|-------|

| Outcomes | Last Year Cumulative | This Year Cumulative | Year on Year # Difference | Year on Year % Difference | Last Year Rolling 12M | This Year Rolling 12 M | Rolling 12M # Difference | Rolling 12M % Difference |
|-----------------------------------|----------------------|----------------------|---------------------------|---------------------------|-----------------------|------------------------|--------------------------|--------------------------|
| All Crime | 276 | 305 | 29 | 10.5 | 454 | 506 | 52 | 11.5 |
| Domestic Burglary incl. Attempts | 13 | 16 | 3 | 23.1 | 18 | 18 | 0 | 0.0 |
| Other Burglary incl. Attempts | 4 | 1 | -3 | -75.0 | 5 | 3 | -2 | -40.0 |
| Vehicle Crime excl.Inter'ce | 5 | 8 | 3 | 60.0 | 10 | 27 | 17 | 170.0 |
| Theft from Vehicles | 3 | 4 | 1 | 33.3 | 5 | 21 | 16 | 320.0 |
| Other Theft & Handling | 20 | 11 | -9 | -45.0 | 40 | 27 | -13 | -32.5 |
| Shoplifting | 28 | 34 | 6 | 21.4 | 58 | 63 | 5 | 8.6 |
| Criminal Damage | 29 | 25 | -4 | -13.8 | 48 | 43 | -5 | -10.4 |
| Robbery | 2 | 1 | -1 | -50.0 | 5 | 1 | -4 | -80.0 |
| Serious Violent Crime | 6 | 6 | 0 | 0.0 | 9 | 7 | -2 | -22.2 |
| Serious Sexual Crime | 2 | 8 | 6 | 300.0 | 2 | 9 | 7 | 350.0 |
| Assault with Less Serious Injury | 48 | 54 | 6 | 12.5 | 75 | 80 | 5 | 6.7 |
| Other Violence Against the Person | 112 | 146 | 34 | 30.4 | 170 | 229 | 59 | 34.7 |
| Racially-Aggravated Crime | 1 | 2 | 1 | 100.0 | 1 | 7 | 6 | 600.0 |

| Solved Rates % | Last Year Cumulative | This Year Cumulative | Year on Year % Point Difference | Last Year Rolling 12M | This Year Rolling 12 M | Rolling 12M % Point Difference |
|-----------------------------------|----------------------|----------------------|---------------------------------|-----------------------|------------------------|--------------------------------|
| All Crime | 23.98 | 21.59 | -2.4 | 22.50 | 21.58 | -0.9 |
| Domestic Burglary incl. Attempts | 30.23 | 40.00 | 9.8 | 22.78 | 20.45 | -2.3 |
| Other Burglary incl. Attempts | 4.08 | 0.69 | -3.4 | 2.76 | 1.32 | -1.4 |
| Vehicle Crime excl.Inter'ce | 3.23 | 3.62 | 0.4 | 3.13 | 7.44 | 4.3 |
| Theft from Vehicles | 2.63 | 2.44 | -0.2 | 2.11 | 8.08 | 6.0 |
| Other Theft & Handling | 10.58 | 5.47 | -5.1 | 11.63 | 7.46 | -4.2 |
| Shoplifting | 50.91 | 48.57 | -2.3 | 59.18 | 54.78 | -4.4 |
| Criminal Damage | 15.93 | 12.89 | -3.0 | 15.79 | 11.91 | -3.9 |
| Robbery | 28.57 | 16.67 | -11.9 | 45.45 | 9.09 | -36.4 |
| Serious Violent Crime | 66.67 | 66.67 | 0.0 | 56.25 | 35.00 | -21.3 |
| Serious Sexual Crime | 16.67 | 36.36 | 19.7 | 12.50 | 28.13 | 15.6 |
| Assault with Less Serious Injury | 41.74 | 41.54 | -0.2 | 40.76 | 42.78 | 2.0 |
| Other Violence Against the Person | 44.80 | 41.36 | -3.4 | 40.57 | 42.88 | 2.3 |
| Racially-Aggravated Crime | 33.33 | 50.00 | 16.7 | 14.29 | 58.33 | 44.0 |



Strategic Change Management Department: Performance Summary

Essex Police Performance Summary: To October 2014

Colchester Performance Summary

| Offences | Last Year Cumulative | This Year Cumulative | Year on Year # Difference | Year on Year % Difference | Last Year Rolling 12M | This Year Rolling 12 M | Rolling 12M # Difference | Rolling 12M % Difference |
|-----------------------------------|----------------------|----------------------|---------------------------|---------------------------|-----------------------|------------------------|--------------------------|--------------------------|
| All Crime | 6150 | 6239 | 89 | 1.4 | 10292 | 10647 | 355 | 3.4 |
| Domestic Burglary incl. Attempts | 276 | 276 | 0 | 0.0 | 532 | 519 | -13 | -2.4 |
| Other Burglary incl. Attempts | 356 | 414 | 58 | 16.3 | 583 | 692 | 109 | 18.7 |
| Vehicle Crime excl. Inter'ce | 392 | 377 | -15 | -3.8 | 640 | 709 | 69 | 10.8 |
| Theft from Vehicles | 315 | 273 | -42 | -13.3 | 505 | 530 | 25 | 5.0 |
| Other Theft & Handling | 789 | 768 | -21 | -2.7 | 1306 | 1291 | -15 | -1.1 |
| Shoplifting | 668 | 634 | -34 | -5.1 | 1098 | 1061 | -37 | -3.4 |
| Criminal Damage | 906 | 959 | 53 | 5.8 | 1590 | 1664 | 74 | 4.7 |
| Robbery | 34 | 37 | 3 | 8.8 | 73 | 77 | 4 | 5.5 |
| Serious Violent Crime | 56 | 65 | 9 | 16.1 | 94 | 98 | 4 | 4.3 |
| Serious Sexual Crime | 119 | 132 | 13 | 10.9 | 172 | 216 | 44 | 25.6 |
| Assault with Less Serious Injury | 626 | 706 | 80 | 12.8 | 1041 | 1178 | 137 | 13.2 |
| Other Violence Against the Person | 1609 | 1731 | 122 | 7.6 | 2579 | 2921 | 342 | 13.3 |
| Racially-Aggravated Crime | 58 | 62 | 4 | 6.9 | 78 | 93 | 15 | 19.2 |

| | | | | | | | | |
|-----------------------|------|------|------|------|------|------|------|-------|
| Anti-Social Behaviour | 4085 | 3868 | -217 | -5.3 | 6482 | 5734 | -748 | -11.5 |
|-----------------------|------|------|------|------|------|------|------|-------|

| Outcomes | Last Year Cumulative | This Year Cumulative | Year on Year # Difference | Year on Year % Difference | Last Year Rolling 12M | This Year Rolling 12 M | Rolling 12M # Difference | Rolling 12M % Difference |
|-----------------------------------|----------------------|----------------------|---------------------------|---------------------------|-----------------------|------------------------|--------------------------|--------------------------|
| All Crime | 1763 | 1694 | -69 | -3.9 | 3079 | 2890 | -189 | -6.1 |
| Domestic Burglary incl. Attempts | 49 | 35 | -14 | -28.6 | 76 | 55 | -21 | -27.6 |
| Other Burglary incl. Attempts | 35 | 37 | 2 | 5.7 | 59 | 60 | 1 | 1.7 |
| Vehicle Crime excl. Inter'ce | 23 | 30 | 7 | 30.4 | 41 | 40 | -1 | -2.4 |
| Theft from Vehicles | 9 | 14 | 5 | 55.6 | 17 | 16 | -1 | -5.9 |
| Other Theft & Handling | 86 | 74 | -12 | -14.0 | 150 | 133 | -17 | -11.3 |
| Shoplifting | 422 | 378 | -44 | -10.4 | 692 | 660 | -32 | -4.6 |
| Criminal Damage | 159 | 164 | 5 | 3.1 | 331 | 266 | -65 | -19.6 |
| Robbery | 6 | 14 | 8 | 133.3 | 10 | 22 | 12 | 120.0 |
| Serious Violent Crime | 31 | 35 | 4 | 12.9 | 43 | 52 | 9 | 20.9 |
| Serious Sexual Crime | 21 | 18 | -3 | -14.3 | 28 | 43 | 15 | 53.6 |
| Assault with Less Serious Injury | 204 | 253 | 49 | 24.0 | 371 | 429 | 58 | 15.6 |
| Other Violence Against the Person | 619 | 598 | -21 | -3.4 | 1062 | 1048 | -14 | -1.3 |
| Racially-Aggravated Crime | 16 | 25 | 9 | 56.3 | 21 | 35 | 14 | 66.7 |

| Solved Rates % | Last Year Cumulative | This Year Cumulative | Year on Year % Point Difference | Last Year Rolling 12M | This Year Rolling 12 M | Rolling 12M % Point Difference |
|-----------------------------------|----------------------|----------------------|---------------------------------|-----------------------|------------------------|--------------------------------|
| All Crime | 28.67 | 27.15 | -1.5 | 29.92 | 27.14 | -2.8 |
| Domestic Burglary incl. Attempts | 17.75 | 12.68 | -5.1 | 14.29 | 10.60 | -3.7 |
| Other Burglary incl. Attempts | 9.83 | 8.94 | -0.9 | 10.12 | 8.67 | -1.4 |
| Vehicle Crime excl. Inter'ce | 5.87 | 7.96 | 2.1 | 6.41 | 5.64 | -0.8 |
| Theft from Vehicles | 2.86 | 5.13 | 2.3 | 3.37 | 3.02 | -0.3 |
| Other Theft & Handling | 10.90 | 9.64 | -1.3 | 11.49 | 10.30 | -1.2 |
| Shoplifting | 63.17 | 59.62 | -3.6 | 63.02 | 62.21 | -0.8 |
| Criminal Damage | 17.55 | 17.10 | -0.4 | 20.82 | 15.99 | -4.8 |
| Robbery | 17.65 | 37.84 | 20.2 | 13.70 | 28.57 | 14.9 |
| Serious Violent Crime | 55.36 | 53.85 | -1.5 | 45.74 | 53.06 | 7.3 |
| Serious Sexual Crime | 17.65 | 13.64 | -4.0 | 16.28 | 19.91 | 3.6 |
| Assault with Less Serious Injury | 32.59 | 35.84 | 3.2 | 35.64 | 36.42 | 0.8 |
| Other Violence Against the Person | 38.47 | 34.55 | -3.9 | 41.18 | 35.88 | -5.3 |
| Racially-Aggravated Crime | 27.59 | 40.32 | 12.7 | 26.92 | 37.63 | 10.7 |



Strategic Change Management Department: Performance Summary

Essex Police Performance Summary: To October 2014

Trending Performance Summary

| Offences | Last Year Cumulative | This Year Cumulative | Year on Year # Difference | Year on Year % Difference | Last Year Rolling 12M | This Year Rolling 12 M | Rolling 12M # Difference | Rolling 12M % Difference |
|-----------------------------------|----------------------|----------------------|---------------------------|---------------------------|-----------------------|------------------------|--------------------------|--------------------------|
| All Crime | 5451 | 5767 | 316 | 5.8 | 8896 | 9304 | 408 | 4.6 |
| Domestic Burglary incl. Attempts | 353 | 278 | -75 | -21.2 | 630 | 512 | -118 | -18.7 |
| Other Burglary incl. Attempts | 447 | 432 | -15 | -3.4 | 753 | 678 | -75 | -10.0 |
| Vehicle Crime excl. Inter'ce | 372 | 387 | 15 | 4.0 | 652 | 606 | -46 | -7.1 |
| Theft from Vehicles | 294 | 284 | -10 | -3.4 | 513 | 443 | -70 | -13.6 |
| Other Theft & Handling | 639 | 597 | -42 | -6.6 | 971 | 917 | -54 | -5.6 |
| Shoplifting | 523 | 629 | 106 | 20.3 | 920 | 1028 | 108 | 11.7 |
| Criminal Damage | 847 | 851 | 4 | 0.5 | 1383 | 1468 | 85 | 6.1 |
| Robbery | 86 | 62 | -24 | -27.9 | 120 | 94 | -26 | -21.7 |
| Serious Violent Crime | 48 | 59 | 11 | 22.9 | 69 | 93 | 24 | 34.8 |
| Serious Sexual Crime | 79 | 108 | 29 | 36.7 | 133 | 162 | 29 | 21.8 |
| Assault with Less Serious Injury | 538 | 660 | 122 | 22.7 | 849 | 1046 | 197 | 23.2 |
| Other Violence Against the Person | 1394 | 1738 | 344 | 24.7 | 2183 | 2728 | 545 | 25.0 |
| Racially-Aggravated Crime | 37 | 43 | 6 | 16.2 | 62 | 63 | 1 | 1.6 |

| | | | | | | | | |
|-----------------------|------|------|-----|------|------|------|------|------|
| Anti-Social Behaviour | 3298 | 3222 | -76 | -2.3 | 5122 | 4791 | -331 | -6.5 |
|-----------------------|------|------|-----|------|------|------|------|------|

| Outcomes | Last Year Cumulative | This Year Cumulative | Year on Year # Difference | Year on Year % Difference | Last Year Rolling 12M | This Year Rolling 12 M | Rolling 12M # Difference | Rolling 12M % Difference |
|-----------------------------------|----------------------|----------------------|---------------------------|---------------------------|-----------------------|------------------------|--------------------------|--------------------------|
| All Crime | 1747 | 1585 | -162 | -9.3 | 2801 | 2795 | -6 | -0.2 |
| Domestic Burglary incl. Attempts | 74 | 26 | -48 | -64.9 | 93 | 61 | -32 | -34.4 |
| Other Burglary incl. Attempts | 58 | 25 | -33 | -56.9 | 76 | 49 | -27 | -35.5 |
| Vehicle Crime excl. Inter'ce | 28 | 29 | 1 | 3.6 | 47 | 55 | 8 | 17.0 |
| Theft from Vehicles | 11 | 9 | -2 | -18.2 | 21 | 25 | 4 | 19.0 |
| Other Theft & Handling | 72 | 51 | -21 | -29.2 | 111 | 95 | -16 | -14.4 |
| Shoplifting | 357 | 367 | 10 | 2.8 | 598 | 651 | 53 | 8.9 |
| Criminal Damage | 194 | 141 | -53 | -27.3 | 276 | 250 | -26 | -9.4 |
| Robbery | 16 | 9 | -7 | -43.8 | 21 | 21 | 0 | 0.0 |
| Serious Violent Crime | 22 | 22 | 0 | 0.0 | 29 | 36 | 7 | 24.1 |
| Serious Sexual Crime | 17 | 17 | 0 | 0.0 | 22 | 41 | 19 | 86.4 |
| Assault with Less Serious Injury | 211 | 230 | 19 | 9.0 | 362 | 406 | 44 | 12.2 |
| Other Violence Against the Person | 618 | 666 | 48 | 7.8 | 1017 | 1124 | 107 | 10.5 |
| Racially-Aggravated Crime | 17 | 16 | -1 | -5.9 | 26 | 25 | -1 | -3.8 |

| Solved Rates % | Last Year Cumulative | This Year Cumulative | Year on Year % Point Difference | Last Year Rolling 12M | This Year Rolling 12 M | Rolling 12M % Point Difference |
|-----------------------------------|----------------------|----------------------|---------------------------------|-----------------------|------------------------|--------------------------------|
| All Crime | 32.05 | 27.48 | -4.6 | 31.49 | 30.04 | -1.4 |
| Domestic Burglary incl. Attempts | 20.96 | 9.35 | -11.6 | 14.76 | 11.91 | -2.8 |
| Other Burglary incl. Attempts | 12.98 | 5.79 | -7.2 | 10.09 | 7.23 | -2.9 |
| Vehicle Crime excl. Inter'ce | 7.53 | 7.49 | 0.0 | 7.21 | 9.08 | 1.9 |
| Theft from Vehicles | 3.74 | 3.17 | -0.6 | 4.09 | 5.64 | 1.5 |
| Other Theft & Handling | 11.27 | 8.54 | -2.7 | 11.43 | 10.36 | -1.1 |
| Shoplifting | 68.26 | 58.35 | -9.9 | 65.00 | 63.33 | -1.7 |
| Criminal Damage | 22.90 | 16.57 | -6.3 | 19.96 | 17.03 | -2.9 |
| Robbery | 18.60 | 14.52 | -4.1 | 17.50 | 22.34 | 4.8 |
| Serious Violent Crime | 45.83 | 37.29 | -8.5 | 42.03 | 38.71 | -3.3 |
| Serious Sexual Crime | 21.52 | 15.74 | -5.8 | 16.54 | 25.31 | 8.8 |
| Assault with Less Serious Injury | 39.22 | 34.85 | -4.4 | 42.64 | 38.81 | -3.8 |
| Other Violence Against the Person | 44.33 | 38.32 | -6.0 | 46.59 | 41.20 | -5.4 |
| Racially-Aggravated Crime | 45.95 | 37.21 | -8.7 | 41.94 | 39.68 | -2.3 |



Strategic Change Management Department: Performance Summary

Essex Police Performance Summary: To October 2014

Southend Performance Summary

| Offences | Last Year Cumulative | This Year Cumulative | Year on Year # Difference | Year on Year % Difference | Last Year Rolling 12M | This Year Rolling 12 M | Rolling 12M # Difference | Rolling 12M % Difference |
|-----------------------------------|----------------------|----------------------|---------------------------|---------------------------|-----------------------|------------------------|--------------------------|--------------------------|
| All Crime | 7791 | 7879 | 88 | 1.1 | 13030 | 13190 | 160 | 1.2 |
| Domestic Burglary incl. Attempts | 504 | 435 | -69 | -13.7 | 1009 | 896 | -113 | -11.2 |
| Other Burglary incl. Attempts | 377 | 353 | -24 | -6.4 | 644 | 632 | -12 | -1.9 |
| Vehicle Crime excl.Inter'ce | 948 | 897 | -51 | -5.4 | 1553 | 1471 | -82 | -5.3 |
| Theft from Vehicles | 767 | 663 | -104 | -13.6 | 1272 | 1135 | -137 | -10.8 |
| Other Theft & Handling | 809 | 737 | -72 | -8.9 | 1284 | 1261 | -23 | -1.8 |
| Shoplifting | 747 | 681 | -66 | -8.8 | 1249 | 1209 | -40 | -3.2 |
| Criminal Damage | 1099 | 1012 | -87 | -7.9 | 1857 | 1701 | -156 | -8.4 |
| Robbery | 191 | 82 | -109 | -57.1 | 304 | 161 | -143 | -47.0 |
| Serious Violent Crime | 74 | 78 | 4 | 5.4 | 123 | 141 | 18 | 14.6 |
| Serious Sexual Crime | 142 | 162 | 20 | 14.1 | 214 | 244 | 30 | 14.0 |
| Assault with Less Serious Injury | 652 | 807 | 155 | 23.8 | 1115 | 1313 | 198 | 17.8 |
| Other Violence Against the Person | 1754 | 2151 | 397 | 22.6 | 2882 | 3461 | 579 | 20.1 |
| Racially-Aggravated Crime | 80 | 76 | -4 | -5.0 | 112 | 126 | 14 | 12.5 |

| | | | | | | | | |
|-----------------------|------|------|------|------|------|------|------|------|
| Anti-Social Behaviour | 5509 | 5076 | -433 | -7.9 | 8421 | 7642 | -779 | -9.3 |
|-----------------------|------|------|------|------|------|------|------|------|

| Outcomes | Last Year Cumulative | This Year Cumulative | Year on Year # Difference | Year on Year % Difference | Last Year Rolling 12M | This Year Rolling 12 M | Rolling 12M # Difference | Rolling 12M % Difference |
|-----------------------------------|----------------------|----------------------|---------------------------|---------------------------|-----------------------|------------------------|--------------------------|--------------------------|
| All Crime | 2329 | 2345 | 16 | 0.7 | 3840 | 4008 | 168 | 4.4 |
| Domestic Burglary incl. Attempts | 127 | 58 | -69 | -54.3 | 218 | 95 | -123 | -56.4 |
| Other Burglary incl. Attempts | 39 | 19 | -20 | -51.3 | 64 | 28 | -36 | -56.3 |
| Vehicle Crime excl.Inter'ce | 43 | 45 | 2 | 4.7 | 68 | 83 | 15 | 22.1 |
| Theft from Vehicles | 14 | 13 | -1 | -7.1 | 25 | 28 | 3 | 12.0 |
| Other Theft & Handling | 93 | 93 | 0 | 0.0 | 135 | 157 | 22 | 16.3 |
| Shoplifting | 481 | 434 | -47 | -9.8 | 822 | 813 | -9 | -1.1 |
| Criminal Damage | 210 | 193 | -17 | -8.1 | 312 | 326 | 14 | 4.5 |
| Robbery | 50 | 14 | -36 | -72.0 | 66 | 36 | -30 | -45.5 |
| Serious Violent Crime | 28 | 33 | 5 | 17.9 | 45 | 65 | 20 | 44.4 |
| Serious Sexual Crime | 28 | 23 | -5 | -17.9 | 40 | 41 | 1 | 2.5 |
| Assault with Less Serious Injury | 256 | 308 | 52 | 20.3 | 436 | 512 | 76 | 17.4 |
| Other Violence Against the Person | 813 | 862 | 49 | 6.0 | 1324 | 1455 | 131 | 9.9 |
| Racially-Aggravated Crime | 40 | 29 | -11 | -27.5 | 50 | 50 | 0 | 0.0 |

| Solved Rates % | Last Year Cumulative | This Year Cumulative | Year on Year % Point Difference | Last Year Rolling 12M | This Year Rolling 12 M | Rolling 12M % Point Difference |
|-----------------------------------|----------------------|----------------------|---------------------------------|-----------------------|------------------------|--------------------------------|
| All Crime | 29.89 | 29.76 | -0.1 | 29.47 | 30.39 | 0.9 |
| Domestic Burglary incl. Attempts | 25.20 | 13.33 | -11.9 | 21.61 | 10.60 | -11.0 |
| Other Burglary incl. Attempts | 10.34 | 5.38 | -5.0 | 9.94 | 4.43 | -5.5 |
| Vehicle Crime excl.Inter'ce | 4.54 | 5.02 | 0.5 | 4.38 | 5.64 | 1.3 |
| Theft from Vehicles | 1.83 | 1.96 | 0.1 | 1.97 | 2.47 | 0.5 |
| Other Theft & Handling | 11.50 | 12.62 | 1.1 | 10.51 | 12.45 | 1.9 |
| Shoplifting | 64.39 | 63.73 | -0.7 | 65.81 | 67.25 | 1.4 |
| Criminal Damage | 19.11 | 19.07 | 0.0 | 16.80 | 19.17 | 2.4 |
| Robbery | 26.18 | 17.07 | -9.1 | 21.71 | 22.36 | 0.6 |
| Serious Violent Crime | 37.84 | 42.31 | 4.5 | 36.59 | 46.10 | 9.5 |
| Serious Sexual Crime | 19.72 | 14.20 | -5.5 | 18.69 | 16.80 | -1.9 |
| Assault with Less Serious Injury | 39.26 | 38.17 | -1.1 | 39.10 | 38.99 | -0.1 |
| Other Violence Against the Person | 46.35 | 40.07 | -6.3 | 45.94 | 42.04 | -3.9 |
| Racially-Aggravated Crime | 50.00 | 38.16 | -11.8 | 44.64 | 39.68 | -5.0 |



Strategic Change Management Department: Performance Summary

Essex Police Performance Summary: To October 2014

Castle Point Performance Summary

| Offences | Last Year Cumulative | This Year Cumulative | Year on Year # Difference | Year on Year % Difference | Last Year Rolling 12M | This Year Rolling 12 M | Rolling 12M # Difference | Rolling 12M % Difference |
|-----------------------------------|----------------------|----------------------|---------------------------|---------------------------|-----------------------|------------------------|--------------------------|--------------------------|
| All Crime | 1871 | 2020 | 149 | 8.0 | 3185 | 3484 | 299 | 9.4 |
| Domestic Burglary incl. Attempts | 232 | 171 | -61 | -26.3 | 388 | 355 | -33 | -8.5 |
| Other Burglary incl. Attempts | 93 | 122 | 29 | 31.2 | 192 | 196 | 4 | 2.1 |
| Vehicle Crime excl.Inter'ce | 260 | 174 | -86 | -33.1 | 435 | 379 | -56 | -12.9 |
| Theft from Vehicles | 180 | 113 | -67 | -37.2 | 298 | 265 | -33 | -11.1 |
| Other Theft & Handling | 198 | 243 | 45 | 22.7 | 317 | 408 | 91 | 28.7 |
| Shoplifting | 105 | 108 | 3 | 2.9 | 210 | 190 | -20 | -9.5 |
| Criminal Damage | 294 | 319 | 25 | 8.5 | 468 | 541 | 73 | 15.6 |
| Robbery | 15 | 19 | 4 | 26.7 | 34 | 42 | 8 | 23.5 |
| Serious Violent Crime | 10 | 18 | 8 | 80.0 | 26 | 34 | 8 | 30.8 |
| Serious Sexual Crime | 33 | 45 | 12 | 36.4 | 47 | 73 | 26 | 55.3 |
| Assault with Less Serious Injury | 162 | 242 | 80 | 49.4 | 272 | 375 | 103 | 37.9 |
| Other Violence Against the Person | 397 | 552 | 155 | 39.0 | 648 | 864 | 216 | 33.3 |
| Racially-Aggravated Crime | 17 | 11 | -6 | -35.3 | 20 | 14 | -6 | -30.0 |

| | | | | | | | | |
|-----------------------|------|------|-----|-----|------|------|-----|-----|
| Anti-Social Behaviour | 1349 | 1478 | 129 | 9.6 | 2046 | 2186 | 140 | 6.8 |
|-----------------------|------|------|-----|-----|------|------|-----|-----|

| Outcomes | Last Year Cumulative | This Year Cumulative | Year on Year # Difference | Year on Year % Difference | Last Year Rolling 12M | This Year Rolling 12 M | Rolling 12M # Difference | Rolling 12M % Difference |
|-----------------------------------|----------------------|----------------------|---------------------------|---------------------------|-----------------------|------------------------|--------------------------|--------------------------|
| All Crime | 481 | 508 | 27 | 5.6 | 792 | 830 | 38 | 4.8 |
| Domestic Burglary incl. Attempts | 29 | 34 | 5 | 17.2 | 36 | 43 | 7 | 19.4 |
| Other Burglary incl. Attempts | 6 | 2 | -4 | -66.7 | 10 | 3 | -7 | -70.0 |
| Vehicle Crime excl.Inter'ce | 14 | 21 | 7 | 50.0 | 19 | 28 | 9 | 47.4 |
| Theft from Vehicles | 2 | 13 | 11 | 550.0 | 2 | 13 | 11 | 550.0 |
| Other Theft & Handling | 35 | 42 | 7 | 20.0 | 55 | 70 | 15 | 27.3 |
| Shoplifting | 50 | 59 | 9 | 18.0 | 97 | 107 | 10 | 10.3 |
| Criminal Damage | 47 | 34 | -13 | -27.7 | 79 | 61 | -18 | -22.8 |
| Robbery | 5 | 3 | -2 | -40.0 | 8 | 4 | -4 | -50.0 |
| Serious Violent Crime | 5 | 9 | 4 | 80.0 | 9 | 12 | 3 | 33.3 |
| Serious Sexual Crime | 6 | 6 | 0 | 0.0 | 10 | 11 | 1 | 10.0 |
| Assault with Less Serious Injury | 82 | 84 | 2 | 2.4 | 130 | 133 | 3 | 2.3 |
| Other Violence Against the Person | 186 | 194 | 8 | 4.3 | 290 | 315 | 25 | 8.6 |
| Racially-Aggravated Crime | 3 | 1 | -2 | -66.7 | 4 | 7 | 3 | 75.0 |

| Solved Rates % | Last Year Cumulative | This Year Cumulative | Year on Year % Point Difference | Last Year Rolling 12M | This Year Rolling 12 M | Rolling 12M % Point Difference |
|-----------------------------------|----------------------|----------------------|---------------------------------|-----------------------|------------------------|--------------------------------|
| All Crime | 25.71 | 25.15 | -0.6 | 24.87 | 23.82 | -1.0 |
| Domestic Burglary incl. Attempts | 12.50 | 19.88 | 7.4 | 9.28 | 12.11 | 2.8 |
| Other Burglary incl. Attempts | 6.45 | 1.64 | -4.8 | 5.21 | 1.53 | -3.7 |
| Vehicle Crime excl.Inter'ce | 5.38 | 12.07 | 6.7 | 4.37 | 7.39 | 3.0 |
| Theft from Vehicles | 1.11 | 11.50 | 10.4 | 0.67 | 4.91 | 4.2 |
| Other Theft & Handling | 17.68 | 17.28 | -0.4 | 17.35 | 17.16 | -0.2 |
| Shoplifting | 47.62 | 54.63 | 7.0 | 46.19 | 56.32 | 10.1 |
| Criminal Damage | 15.99 | 10.66 | -5.3 | 16.88 | 11.28 | -5.6 |
| Robbery | 33.33 | 15.79 | -17.5 | 23.53 | 9.52 | -14.0 |
| Serious Violent Crime | 50.00 | 50.00 | 0.0 | 34.62 | 35.29 | 0.7 |
| Serious Sexual Crime | 18.18 | 13.33 | -4.8 | 21.28 | 15.07 | -6.2 |
| Assault with Less Serious Injury | 50.62 | 34.71 | -15.9 | 47.79 | 35.47 | -12.3 |
| Other Violence Against the Person | 46.85 | 35.14 | -11.7 | 44.75 | 36.46 | -8.3 |
| Racially-Aggravated Crime | 17.65 | 9.09 | -8.6 | 20.00 | 50.00 | 30.0 |



Strategic Change Management Department: Performance Summary

Essex Police Performance Summary: To October 2014

Rochford Performance Summary

| Offences | Last Year Cumulative | This Year Cumulative | Year on Year # Difference | Year on Year % Difference | Last Year Rolling 12M | This Year Rolling 12 M | Rolling 12M # Difference | Rolling 12M % Difference |
|-----------------------------------|----------------------|----------------------|---------------------------|---------------------------|-----------------------|------------------------|--------------------------|--------------------------|
| All Crime | 1586 | 1552 | -34 | -2.1 | 2762 | 2793 | 31 | 1.1 |
| Domestic Burglary incl. Attempts | 127 | 120 | -7 | -5.5 | 221 | 275 | 54 | 24.4 |
| Other Burglary incl. Attempts | 97 | 86 | -11 | -11.3 | 180 | 171 | -9 | -5.0 |
| Vehicle Crime excl.Inter'ce | 193 | 154 | -39 | -20.2 | 355 | 322 | -33 | -9.3 |
| Theft from Vehicles | 150 | 109 | -41 | -27.3 | 273 | 248 | -25 | -9.2 |
| Other Theft & Handling | 165 | 174 | 9 | 5.5 | 280 | 314 | 34 | 12.1 |
| Shoplifting | 168 | 168 | 0 | 0.0 | 272 | 244 | -28 | -10.3 |
| Criminal Damage | 324 | 240 | -84 | -25.9 | 546 | 461 | -85 | -15.6 |
| Robbery | 12 | 9 | -3 | -25.0 | 17 | 17 | 0 | 0.0 |
| Serious Violent Crime | 13 | 20 | 7 | 53.8 | 15 | 32 | 17 | 113.3 |
| Serious Sexual Crime | 24 | 31 | 7 | 29.2 | 34 | 46 | 12 | 35.3 |
| Assault with Less Serious Injury | 118 | 158 | 40 | 33.9 | 217 | 266 | 49 | 22.6 |
| Other Violence Against the Person | 290 | 379 | 89 | 30.7 | 512 | 610 | 98 | 19.1 |
| Racially-Aggravated Crime | 14 | 10 | -4 | -28.6 | 20 | 12 | -8 | -40.0 |

| | | | | | | | | |
|-----------------------|------|------|----|-----|------|------|-----|------|
| Anti-Social Behaviour | 1019 | 1104 | 85 | 8.3 | 1713 | 1617 | -96 | -5.6 |
|-----------------------|------|------|----|-----|------|------|-----|------|

| Outcomes | Last Year Cumulative | This Year Cumulative | Year on Year # Difference | Year on Year % Difference | Last Year Rolling 12M | This Year Rolling 12 M | Rolling 12M # Difference | Rolling 12M % Difference |
|-----------------------------------|----------------------|----------------------|---------------------------|---------------------------|-----------------------|------------------------|--------------------------|--------------------------|
| All Crime | 433 | 378 | -55 | -12.7 | 737 | 681 | -56 | -7.6 |
| Domestic Burglary incl. Attempts | 22 | 10 | -12 | -54.5 | 25 | 13 | -12 | -48.0 |
| Other Burglary incl. Attempts | 3 | 4 | 1 | 33.3 | 7 | 8 | 1 | 14.3 |
| Vehicle Crime excl.Inter'ce | 9 | 6 | -3 | -33.3 | 15 | 8 | -7 | -46.7 |
| Theft from Vehicles | 4 | 3 | -1 | -25.0 | 5 | 3 | -2 | -40.0 |
| Other Theft & Handling | 19 | 17 | -2 | -10.5 | 32 | 28 | -4 | -12.5 |
| Shoplifting | 106 | 88 | -18 | -17.0 | 170 | 147 | -23 | -13.5 |
| Criminal Damage | 52 | 36 | -16 | -30.8 | 98 | 74 | -24 | -24.5 |
| Robbery | 2 | 2 | 0 | 0.0 | 4 | 4 | 0 | 0.0 |
| Serious Violent Crime | 5 | 7 | 2 | 40.0 | 7 | 13 | 6 | 85.7 |
| Serious Sexual Crime | 3 | 9 | 6 | 200.0 | 4 | 11 | 7 | 175.0 |
| Assault with Less Serious Injury | 51 | 58 | 7 | 13.7 | 95 | 106 | 11 | 11.6 |
| Other Violence Against the Person | 142 | 131 | -11 | -7.7 | 238 | 228 | -10 | -4.2 |
| Racially-Aggravated Crime | 7 | 5 | -2 | -28.6 | 11 | 6 | -5 | -45.5 |

| Solved Rates % | Last Year Cumulative | This Year Cumulative | Year on Year % Point Difference | Last Year Rolling 12M | This Year Rolling 12 M | Rolling 12M % Point Difference |
|-----------------------------------|----------------------|----------------------|---------------------------------|-----------------------|------------------------|--------------------------------|
| All Crime | 27.30 | 24.36 | -2.9 | 26.68 | 24.38 | -2.3 |
| Domestic Burglary incl. Attempts | 17.32 | 8.33 | -9.0 | 11.31 | 4.73 | -6.6 |
| Other Burglary incl. Attempts | 3.09 | 4.65 | 1.6 | 3.89 | 4.68 | 0.8 |
| Vehicle Crime excl.Inter'ce | 4.66 | 3.90 | -0.8 | 4.23 | 2.48 | -1.7 |
| Theft from Vehicles | 2.67 | 2.75 | 0.1 | 1.83 | 1.21 | -0.6 |
| Other Theft & Handling | 11.52 | 9.77 | -1.7 | 11.43 | 8.92 | -2.5 |
| Shoplifting | 63.10 | 52.38 | -10.7 | 62.50 | 60.25 | -2.3 |
| Criminal Damage | 16.05 | 15.00 | -1.0 | 17.95 | 16.05 | -1.9 |
| Robbery | 16.67 | 22.22 | 5.6 | 23.53 | 23.53 | 0.0 |
| Serious Violent Crime | 38.46 | 35.00 | -3.5 | 46.67 | 40.63 | -6.0 |
| Serious Sexual Crime | 12.50 | 29.03 | 16.5 | 11.76 | 23.91 | 12.1 |
| Assault with Less Serious Injury | 43.22 | 36.71 | -6.5 | 43.78 | 39.85 | -3.9 |
| Other Violence Against the Person | 48.97 | 34.56 | -14.4 | 46.48 | 37.38 | -9.1 |
| Racially-Aggravated Crime | 50.00 | 50.00 | 0.0 | 55.00 | 50.00 | -5.0 |



Strategic Change Management Department: Performance Summary

Essex Police Performance Summary: To October 2014

Basildon Performance Summary

| Offences | Last Year Cumulative | This Year Cumulative | Year on Year # Difference | Year on Year % Difference | Last Year Rolling 12M | This Year Rolling 12 M | Rolling 12M # Difference | Rolling 12M % Difference |
|-----------------------------------|----------------------|----------------------|---------------------------|---------------------------|-----------------------|------------------------|--------------------------|--------------------------|
| All Crime | 6746 | 6946 | 200 | 3.0 | 11576 | 12182 | 606 | 5.2 |
| Domestic Burglary incl. Attempts | 580 | 564 | -16 | -2.8 | 1121 | 1116 | -5 | -0.4 |
| Other Burglary incl. Attempts | 270 | 370 | 100 | 37.0 | 469 | 601 | 132 | 28.1 |
| Vehicle Crime excl.Inter'ce | 873 | 832 | -41 | -4.7 | 1508 | 1564 | 56 | 3.7 |
| Theft from Vehicles | 665 | 616 | -49 | -7.4 | 1141 | 1184 | 43 | 3.8 |
| Other Theft & Handling | 684 | 728 | 44 | 6.4 | 1184 | 1234 | 50 | 4.2 |
| Shoplifting | 795 | 584 | -211 | -26.5 | 1263 | 1096 | -167 | -13.2 |
| Criminal Damage | 946 | 980 | 34 | 3.6 | 1637 | 1777 | 140 | 8.6 |
| Robbery | 69 | 65 | -4 | -5.8 | 120 | 129 | 9 | 7.5 |
| Serious Violent Crime | 83 | 52 | -31 | -37.3 | 117 | 100 | -17 | -14.5 |
| Serious Sexual Crime | 93 | 96 | 3 | 3.2 | 131 | 182 | 51 | 38.9 |
| Assault with Less Serious Injury | 585 | 648 | 63 | 10.8 | 958 | 1043 | 85 | 8.9 |
| Other Violence Against the Person | 1440 | 1680 | 240 | 16.7 | 2384 | 2721 | 337 | 14.1 |
| Racially-Aggravated Crime | 52 | 68 | 16 | 30.8 | 93 | 103 | 10 | 10.8 |

| | | | | | | | | |
|-----------------------|------|------|-----|------|------|------|------|------|
| Anti-Social Behaviour | 4277 | 4222 | -55 | -1.3 | 6434 | 6167 | -267 | -4.1 |
|-----------------------|------|------|-----|------|------|------|------|------|

| Outcomes | Last Year Cumulative | This Year Cumulative | Year on Year # Difference | Year on Year % Difference | Last Year Rolling 12M | This Year Rolling 12 M | Rolling 12M # Difference | Rolling 12M % Difference |
|-----------------------------------|----------------------|----------------------|---------------------------|---------------------------|-----------------------|------------------------|--------------------------|--------------------------|
| All Crime | 2157 | 1939 | -218 | -10.1 | 3577 | 3409 | -168 | -4.7 |
| Domestic Burglary incl. Attempts | 106 | 156 | 50 | 47.2 | 129 | 227 | 98 | 76.0 |
| Other Burglary incl. Attempts | 12 | 17 | 5 | 41.7 | 49 | 39 | -10 | -20.4 |
| Vehicle Crime excl.Inter'ce | 39 | 55 | 16 | 41.0 | 71 | 84 | 13 | 18.3 |
| Theft from Vehicles | 12 | 29 | 17 | 141.7 | 31 | 39 | 8 | 25.8 |
| Other Theft & Handling | 109 | 94 | -15 | -13.8 | 195 | 166 | -29 | -14.9 |
| Shoplifting | 593 | 403 | -190 | -32.0 | 888 | 778 | -110 | -12.4 |
| Criminal Damage | 137 | 150 | 13 | 9.5 | 239 | 246 | 7 | 2.9 |
| Robbery | 13 | 8 | -5 | -38.5 | 22 | 11 | -11 | -50.0 |
| Serious Violent Crime | 23 | 17 | -6 | -26.1 | 37 | 34 | -3 | -8.1 |
| Serious Sexual Crime | 15 | 21 | 6 | 40.0 | 25 | 34 | 9 | 36.0 |
| Assault with Less Serious Injury | 223 | 236 | 13 | 5.8 | 359 | 381 | 22 | 6.1 |
| Other Violence Against the Person | 615 | 590 | -25 | -4.1 | 1018 | 984 | -34 | -3.3 |
| Racially-Aggravated Crime | 18 | 22 | 4 | 22.2 | 32 | 29 | -3 | -9.4 |

| Solved Rates % | Last Year Cumulative | This Year Cumulative | Year on Year % Point Difference | Last Year Rolling 12M | This Year Rolling 12 M | Rolling 12M % Point Difference |
|-----------------------------------|----------------------|----------------------|---------------------------------|-----------------------|------------------------|--------------------------------|
| All Crime | 31.97 | 27.92 | -4.1 | 30.90 | 27.98 | -2.9 |
| Domestic Burglary incl. Attempts | 18.28 | 27.66 | 9.4 | 11.51 | 20.34 | 8.8 |
| Other Burglary incl. Attempts | 4.44 | 4.59 | 0.2 | 10.45 | 6.49 | -4.0 |
| Vehicle Crime excl.Inter'ce | 4.47 | 6.61 | 2.1 | 4.71 | 5.37 | 0.7 |
| Theft from Vehicles | 1.80 | 4.71 | 2.9 | 2.72 | 3.29 | 0.6 |
| Other Theft & Handling | 15.94 | 12.91 | -3.0 | 16.47 | 13.45 | -3.0 |
| Shoplifting | 74.59 | 69.01 | -5.6 | 70.31 | 70.99 | 0.7 |
| Criminal Damage | 14.48 | 15.31 | 0.8 | 14.60 | 13.84 | -0.8 |
| Robbery | 18.84 | 12.31 | -6.5 | 18.33 | 8.53 | -9.8 |
| Serious Violent Crime | 27.71 | 32.69 | 5.0 | 31.62 | 34.00 | 2.4 |
| Serious Sexual Crime | 16.13 | 21.88 | 5.7 | 19.08 | 18.68 | -0.4 |
| Assault with Less Serious Injury | 38.12 | 36.42 | -1.7 | 37.47 | 36.53 | -0.9 |
| Other Violence Against the Person | 42.71 | 35.12 | -7.6 | 42.70 | 36.16 | -6.5 |
| Racially-Aggravated Crime | 34.62 | 32.35 | -2.3 | 34.41 | 28.16 | -6.3 |



Strategic Change Management Department: Performance Summary

Essex Police Performance Summary: To October 2014

Thurrock Performance Summary

| Offences | Last Year Cumulative | This Year Cumulative | Year on Year # Difference | Year on Year % Difference | Last Year Rolling 12M | This Year Rolling 12 M | Rolling 12M # Difference | Rolling 12M % Difference |
|-----------------------------------|----------------------|----------------------|---------------------------|---------------------------|-----------------------|------------------------|--------------------------|--------------------------|
| All Crime | 6633 | 6363 | -270 | -4.1 | 11649 | 10909 | -740 | -6.4 |
| Domestic Burglary incl. Attempts | 428 | 429 | 1 | 0.2 | 869 | 796 | -73 | -8.4 |
| Other Burglary incl. Attempts | 398 | 325 | -73 | -18.3 | 748 | 617 | -131 | -17.5 |
| Vehicle Crime excl.Inter'ce | 1055 | 874 | -181 | -17.2 | 1971 | 1585 | -386 | -19.6 |
| Theft from Vehicles | 704 | 566 | -138 | -19.6 | 1290 | 1081 | -209 | -16.2 |
| Other Theft & Handling | 730 | 740 | 10 | 1.4 | 1218 | 1209 | -9 | -0.7 |
| Shoplifting | 729 | 666 | -63 | -8.6 | 1214 | 1172 | -42 | -3.5 |
| Criminal Damage | 851 | 827 | -24 | -2.8 | 1559 | 1453 | -106 | -6.8 |
| Robbery | 64 | 71 | 7 | 10.9 | 146 | 124 | -22 | -15.1 |
| Serious Violent Crime | 53 | 45 | -8 | -15.1 | 91 | 90 | -1 | -1.1 |
| Serious Sexual Crime | 80 | 104 | 24 | 30.0 | 154 | 161 | 7 | 4.5 |
| Assault with Less Serious Injury | 501 | 587 | 86 | 17.2 | 801 | 936 | 135 | 16.9 |
| Other Violence Against the Person | 1378 | 1572 | 194 | 14.1 | 2178 | 2517 | 339 | 15.6 |
| Racially-Aggravated Crime | 99 | 83 | -16 | -16.2 | 151 | 142 | -9 | -6.0 |

| | | | | | | | | |
|-----------------------|------|------|----|-----|------|------|------|------|
| Anti-Social Behaviour | 3581 | 3671 | 90 | 2.5 | 5835 | 5589 | -246 | -4.2 |
|-----------------------|------|------|----|-----|------|------|------|------|

| Outcomes | Last Year Cumulative | This Year Cumulative | Year on Year # Difference | Year on Year % Difference | Last Year Rolling 12M | This Year Rolling 12 M | Rolling 12M # Difference | Rolling 12M % Difference |
|-----------------------------------|----------------------|----------------------|---------------------------|---------------------------|-----------------------|------------------------|--------------------------|--------------------------|
| All Crime | 1933 | 1567 | -366 | -18.9 | 3105 | 2712 | -393 | -12.7 |
| Domestic Burglary incl. Attempts | 75 | 53 | -22 | -29.3 | 121 | 69 | -52 | -43.0 |
| Other Burglary incl. Attempts | 16 | 27 | 11 | 68.8 | 34 | 45 | 11 | 32.4 |
| Vehicle Crime excl.Inter'ce | 56 | 67 | 11 | 19.6 | 88 | 101 | 13 | 14.8 |
| Theft from Vehicles | 25 | 28 | 3 | 12.0 | 40 | 38 | -2 | -5.0 |
| Other Theft & Handling | 129 | 73 | -56 | -43.4 | 190 | 165 | -25 | -13.2 |
| Shoplifting | 482 | 377 | -105 | -21.8 | 775 | 682 | -93 | -12.0 |
| Criminal Damage | 144 | 135 | -9 | -6.3 | 239 | 221 | -18 | -7.5 |
| Robbery | 8 | 19 | 11 | 137.5 | 21 | 32 | 11 | 52.4 |
| Serious Violent Crime | 19 | 24 | 5 | 26.3 | 38 | 46 | 8 | 21.1 |
| Serious Sexual Crime | 10 | 16 | 6 | 60.0 | 14 | 27 | 13 | 92.9 |
| Assault with Less Serious Injury | 204 | 199 | -5 | -2.5 | 316 | 316 | 0 | 0.0 |
| Other Violence Against the Person | 605 | 522 | -83 | -13.7 | 945 | 858 | -87 | -9.2 |
| Racially-Aggravated Crime | 34 | 22 | -12 | -35.3 | 47 | 33 | -14 | -29.8 |

| Solved Rates % | Last Year Cumulative | This Year Cumulative | Year on Year % Point Difference | Last Year Rolling 12M | This Year Rolling 12 M | Year on Year % Point Difference | Rolling 12M % Point Difference |
|-----------------------------------|----------------------|----------------------|---------------------------------|-----------------------|------------------------|---------------------------------|--------------------------------|
| All Crime | 29.14 | 24.63 | -4.5 | 26.65 | 24.86 | -1.8 | -1.8 |
| Domestic Burglary incl. Attempts | 17.52 | 12.35 | -5.2 | 13.92 | 8.67 | -5.3 | -5.3 |
| Other Burglary incl. Attempts | 4.02 | 8.31 | 4.3 | 4.55 | 7.29 | 2.7 | 2.7 |
| Vehicle Crime excl.Inter'ce | 5.31 | 7.67 | 2.4 | 4.46 | 6.37 | 1.9 | 1.9 |
| Theft from Vehicles | 3.55 | 4.95 | 1.4 | 3.10 | 3.52 | 0.4 | 0.4 |
| Other Theft & Handling | 17.67 | 9.86 | -7.8 | 15.60 | 13.65 | -2.0 | -2.0 |
| Shoplifting | 66.12 | 56.61 | -9.5 | 63.84 | 58.19 | -5.6 | -5.6 |
| Criminal Damage | 16.92 | 16.32 | -0.6 | 15.33 | 15.21 | -0.1 | -0.1 |
| Robbery | 12.50 | 26.76 | 14.3 | 14.38 | 25.81 | 11.4 | 11.4 |
| Serious Violent Crime | 35.85 | 53.33 | 17.5 | 41.76 | 51.11 | 9.4 | 9.4 |
| Serious Sexual Crime | 12.50 | 15.38 | 2.9 | 9.09 | 16.77 | 7.7 | 7.7 |
| Assault with Less Serious Injury | 40.72 | 33.90 | -6.8 | 39.45 | 33.76 | -5.7 | -5.7 |
| Other Violence Against the Person | 43.90 | 33.21 | -10.7 | 43.39 | 34.09 | -9.3 | -9.3 |
| Racially-Aggravated Crime | 34.34 | 26.51 | -7.8 | 31.13 | 23.24 | -7.9 | -7.9 |



Strategic Change Management Department: Performance Summary

Essex Police Performance Summary: To October 2014

Epping Performance Summary

| Offences | Last Year Cumulative | This Year Cumulative | Year on Year # Difference | Year on Year % Difference | Last Year Rolling 12M | This Year Rolling 12 M | Rolling 12M # Difference | Rolling 12M % Difference |
|-----------------------------------|----------------------|----------------------|---------------------------|---------------------------|-----------------------|------------------------|--------------------------|--------------------------|
| All Crime | 4156 | 3971 | -185 | -4.5 | 7220 | 6691 | -529 | -7.3 |
| Domestic Burglary incl. Attempts | 388 | 390 | 2 | 0.5 | 757 | 664 | -93 | -12.3 |
| Other Burglary incl. Attempts | 258 | 243 | -15 | -5.8 | 425 | 412 | -13 | -3.1 |
| Vehicle Crime excl.Inter'ce | 802 | 516 | -286 | -35.7 | 1413 | 971 | -442 | -31.3 |
| Theft from Vehicles | 602 | 322 | -280 | -46.5 | 1059 | 650 | -409 | -38.6 |
| Other Theft & Handling | 596 | 524 | -72 | -12.1 | 1018 | 920 | -98 | -9.6 |
| Shoplifting | 174 | 284 | 110 | 63.2 | 319 | 442 | 123 | 38.6 |
| Criminal Damage | 488 | 543 | 55 | 11.3 | 860 | 891 | 31 | 3.6 |
| Robbery | 54 | 52 | -2 | -3.7 | 87 | 81 | -6 | -6.9 |
| Serious Violent Crime | 28 | 30 | 2 | 7.1 | 49 | 54 | 5 | 10.2 |
| Serious Sexual Crime | 49 | 51 | 2 | 4.1 | 83 | 74 | -9 | -10.8 |
| Assault with Less Serious Injury | 300 | 336 | 36 | 12.0 | 484 | 526 | 42 | 8.7 |
| Other Violence Against the Person | 815 | 966 | 151 | 18.5 | 1307 | 1552 | 245 | 18.7 |
| Racially-Aggravated Crime | 41 | 43 | 2 | 4.9 | 64 | 66 | 2 | 3.1 |

| | | | | | | | | |
|-----------------------|------|------|-----|-----|------|------|------|------|
| Anti-Social Behaviour | 2286 | 2436 | 150 | 6.6 | 3772 | 3508 | -264 | -7.0 |
|-----------------------|------|------|-----|-----|------|------|------|------|

| Outcomes | Last Year Cumulative | This Year Cumulative | Year on Year # Difference | Year on Year % Difference | Last Year Rolling 12M | This Year Rolling 12 M | Rolling 12M # Difference | Rolling 12M % Difference |
|-----------------------------------|----------------------|----------------------|---------------------------|---------------------------|-----------------------|------------------------|--------------------------|--------------------------|
| All Crime | 1030 | 749 | -281 | -27.3 | 1591 | 1319 | -272 | -17.1 |
| Domestic Burglary incl. Attempts | 94 | 26 | -68 | -72.3 | 114 | 44 | -70 | -61.4 |
| Other Burglary incl. Attempts | 14 | 6 | -8 | -57.1 | 24 | 12 | -12 | -50.0 |
| Vehicle Crime excl.Inter'ce | 56 | 9 | -47 | -83.9 | 68 | 22 | -46 | -67.6 |
| Theft from Vehicles | 24 | 3 | -21 | -87.5 | 28 | 5 | -23 | -82.1 |
| Other Theft & Handling | 76 | 61 | -15 | -19.7 | 122 | 120 | -2 | -1.6 |
| Shoplifting | 88 | 94 | 6 | 6.8 | 142 | 153 | 11 | 7.7 |
| Criminal Damage | 85 | 74 | -11 | -12.9 | 131 | 120 | -11 | -8.4 |
| Robbery | 14 | 11 | -3 | -21.4 | 18 | 15 | -3 | -16.7 |
| Serious Violent Crime | 7 | 16 | 9 | 128.6 | 14 | 22 | 8 | 57.1 |
| Serious Sexual Crime | 11 | 9 | -2 | -18.2 | 18 | 10 | -8 | -44.4 |
| Assault with Less Serious Injury | 120 | 107 | -13 | -10.8 | 193 | 174 | -19 | -9.8 |
| Other Violence Against the Person | 360 | 316 | -44 | -12.2 | 583 | 544 | -39 | -6.7 |
| Racially-Aggravated Crime | 17 | 14 | -3 | -17.6 | 21 | 21 | 0 | 0.0 |

| Solved Rates % | Last Year Cumulative | This Year Cumulative | Year on Year % Point Difference | Last Year Rolling 12M | This Year Rolling 12 M | Rolling 12M % Point Difference |
|-----------------------------------|----------------------|----------------------|---------------------------------|-----------------------|------------------------|--------------------------------|
| All Crime | 24.78 | 18.86 | -5.9 | 22.04 | 19.71 | -2.3 |
| Domestic Burglary incl. Attempts | 24.23 | 6.67 | -17.6 | 15.06 | 6.63 | -8.4 |
| Other Burglary incl. Attempts | 5.43 | 2.47 | -3.0 | 5.65 | 2.91 | -2.7 |
| Vehicle Crime excl.Inter'ce | 6.98 | 1.74 | -5.2 | 4.81 | 2.27 | -2.5 |
| Theft from Vehicles | 3.99 | 0.93 | -3.1 | 2.64 | 0.77 | -1.9 |
| Other Theft & Handling | 12.75 | 11.64 | -1.1 | 11.98 | 13.04 | 1.1 |
| Shoplifting | 50.57 | 33.10 | -17.5 | 44.51 | 34.62 | -9.9 |
| Criminal Damage | 17.42 | 13.63 | -3.8 | 15.23 | 13.47 | -1.8 |
| Robbery | 25.93 | 21.15 | -4.8 | 20.69 | 18.52 | -2.2 |
| Serious Violent Crime | 25.00 | 53.33 | 28.3 | 28.57 | 40.74 | 12.2 |
| Serious Sexual Crime | 22.45 | 17.65 | -4.8 | 21.69 | 13.51 | -8.2 |
| Assault with Less Serious Injury | 40.00 | 31.85 | -8.2 | 39.88 | 33.08 | -6.8 |
| Other Violence Against the Person | 44.17 | 32.71 | -11.5 | 44.61 | 35.05 | -9.6 |
| Racially-Aggravated Crime | 41.46 | 32.56 | -8.9 | 32.81 | 31.82 | -1.0 |



Strategic Change Management Department: Performance Summary

Essex Police Performance Summary: To October 2014

Harlow Performance Summary

| Offences | Last Year Cumulative | This Year Cumulative | Year on Year # Difference | Year on Year % Difference | Last Year Rolling 12M | This Year Rolling 12 M | Rolling 12M # Difference | Rolling 12M % Difference |
|-----------------------------------|----------------------|----------------------|---------------------------|---------------------------|-----------------------|------------------------|--------------------------|--------------------------|
| All Crime | 3946 | 3851 | -95 | -2.4 | 6625 | 6529 | -96 | -1.4 |
| Domestic Burglary incl. Attempts | 220 | 211 | -9 | -4.1 | 423 | 370 | -53 | -12.5 |
| Other Burglary incl. Attempts | 223 | 176 | -47 | -21.1 | 318 | 300 | -18 | -5.7 |
| Vehicle Crime excl.Inter'ce | 397 | 284 | -113 | -28.5 | 682 | 559 | -123 | -18.0 |
| Theft from Vehicles | 311 | 221 | -90 | -28.9 | 548 | 443 | -105 | -19.2 |
| Other Theft & Handling | 450 | 367 | -83 | -18.4 | 753 | 618 | -135 | -17.9 |
| Shoplifting | 584 | 655 | 71 | 12.2 | 976 | 1107 | 131 | 13.4 |
| Criminal Damage | 485 | 508 | 23 | 4.7 | 824 | 833 | 9 | 1.1 |
| Robbery | 58 | 55 | -3 | -5.2 | 121 | 86 | -35 | -28.9 |
| Serious Violent Crime | 24 | 32 | 8 | 33.3 | 47 | 48 | 1 | 2.1 |
| Serious Sexual Crime | 52 | 51 | -1 | -1.9 | 81 | 86 | 5 | 6.2 |
| Assault with Less Serious Injury | 338 | 350 | 12 | 3.6 | 548 | 585 | 37 | 6.8 |
| Other Violence Against the Person | 916 | 1008 | 92 | 10.0 | 1479 | 1656 | 177 | 12.0 |
| Racially-Aggravated Crime | 41 | 49 | 8 | 19.5 | 59 | 70 | 11 | 18.6 |

| | | | | | | | | |
|-----------------------|------|------|-----|-----|------|------|-----|------|
| Anti-Social Behaviour | 2550 | 2717 | 167 | 6.5 | 4097 | 4029 | -68 | -1.7 |
|-----------------------|------|------|-----|-----|------|------|-----|------|

| Outcomes | Last Year Cumulative | This Year Cumulative | Year on Year # Difference | Year on Year % Difference | Last Year Rolling 12M | This Year Rolling 12 M | Rolling 12M # Difference | Rolling 12M % Difference |
|-----------------------------------|----------------------|----------------------|---------------------------|---------------------------|-----------------------|------------------------|--------------------------|--------------------------|
| All Crime | 1337 | 1303 | -34 | -2.5 | 2279 | 2276 | -3 | -0.1 |
| Domestic Burglary incl. Attempts | 26 | 36 | 10 | 38.5 | 40 | 69 | 29 | 72.5 |
| Other Burglary incl. Attempts | 11 | 7 | -4 | -36.4 | 22 | 16 | -6 | -27.3 |
| Vehicle Crime excl.Inter'ce | 14 | 26 | 12 | 85.7 | 27 | 41 | 14 | 51.9 |
| Theft from Vehicles | 4 | 11 | 7 | 175.0 | 10 | 19 | 9 | 90.0 |
| Other Theft & Handling | 48 | 41 | -7 | -14.6 | 90 | 76 | -14 | -15.6 |
| Shoplifting | 339 | 380 | 41 | 12.1 | 624 | 660 | 36 | 5.8 |
| Criminal Damage | 111 | 98 | -13 | -11.7 | 194 | 186 | -8 | -4.1 |
| Robbery | 14 | 8 | -6 | -42.9 | 22 | 13 | -9 | -40.9 |
| Serious Violent Crime | 12 | 15 | 3 | 25.0 | 19 | 21 | 2 | 10.5 |
| Serious Sexual Crime | 12 | 9 | -3 | -25.0 | 17 | 19 | 2 | 11.8 |
| Assault with Less Serious Injury | 141 | 127 | -14 | -9.9 | 238 | 222 | -16 | -6.7 |
| Other Violence Against the Person | 460 | 431 | -29 | -6.3 | 744 | 725 | -19 | -2.6 |
| Racially-Aggravated Crime | 22 | 18 | -4 | -18.2 | 32 | 30 | -2 | -6.3 |

| Solved Rates % | Last Year Cumulative | This Year Cumulative | Year on Year % Point Difference | Last Year Rolling 12M | This Year Rolling 12 M | Rolling 12M % Point Difference |
|-----------------------------------|----------------------|----------------------|---------------------------------|-----------------------|------------------------|--------------------------------|
| All Crime | 33.88 | 33.84 | 0.0 | 34.40 | 34.86 | 0.5 |
| Domestic Burglary incl. Attempts | 11.82 | 17.06 | 5.2 | 9.46 | 18.65 | 9.2 |
| Other Burglary incl. Attempts | 4.93 | 3.98 | -1.0 | 6.92 | 5.33 | -1.6 |
| Vehicle Crime excl.Inter'ce | 3.53 | 9.15 | 5.6 | 3.96 | 7.33 | 3.4 |
| Theft from Vehicles | 1.29 | 4.98 | 3.7 | 1.82 | 4.29 | 2.5 |
| Other Theft & Handling | 10.67 | 11.17 | 0.5 | 11.95 | 12.30 | 0.3 |
| Shoplifting | 58.05 | 58.02 | 0.0 | 63.93 | 59.62 | -4.3 |
| Criminal Damage | 22.89 | 19.29 | -3.6 | 23.54 | 22.33 | -1.2 |
| Robbery | 24.14 | 14.55 | -9.6 | 18.18 | 15.12 | -3.1 |
| Serious Violent Crime | 50.00 | 46.88 | -3.1 | 40.43 | 43.75 | 3.3 |
| Serious Sexual Crime | 23.08 | 17.65 | -5.4 | 20.99 | 22.09 | 1.1 |
| Assault with Less Serious Injury | 41.72 | 36.29 | -5.4 | 43.43 | 37.95 | -5.5 |
| Other Violence Against the Person | 50.22 | 42.76 | -7.5 | 50.30 | 43.78 | -6.5 |
| Racially-Aggravated Crime | 53.66 | 36.73 | -16.9 | 54.24 | 42.86 | -11.4 |



Strategic Change Management Department: Performance Summary

Essex Police Performance Summary: To October 2014

Brentwood Performance Summary

| Offences | Last Year Cumulative | This Year Cumulative | Year on Year # Difference | Year on Year % Difference | Last Year Rolling 12M | This Year Rolling 12 M | Rolling 12M # Difference | Rolling 12M % Difference |
|-----------------------------------|----------------------|----------------------|---------------------------|---------------------------|-----------------------|------------------------|--------------------------|--------------------------|
| All Crime | 2157 | 1995 | -162 | -7.5 | 3903 | 3434 | -469 | -12.0 |
| Domestic Burglary incl. Attempts | 277 | 222 | -55 | -19.9 | 561 | 429 | -132 | -23.5 |
| Other Burglary incl. Attempts | 105 | 124 | 19 | 18.1 | 218 | 200 | -18 | -8.3 |
| Vehicle Crime excl. Inter'ce | 348 | 310 | -38 | -10.9 | 615 | 552 | -63 | -10.2 |
| Theft from Vehicles | 264 | 226 | -38 | -14.4 | 470 | 399 | -71 | -15.1 |
| Other Theft & Handling | 300 | 321 | 21 | 7.0 | 547 | 506 | -41 | -7.5 |
| Shoplifting | 160 | 109 | -51 | -31.9 | 289 | 241 | -48 | -16.6 |
| Criminal Damage | 280 | 248 | -32 | -11.4 | 470 | 391 | -79 | -16.8 |
| Robbery | 11 | 12 | 1 | 9.1 | 29 | 22 | -7 | -24.1 |
| Serious Violent Crime | 11 | 21 | 10 | 90.9 | 17 | 34 | 17 | 100.0 |
| Serious Sexual Crime | 23 | 23 | 0 | 0.0 | 29 | 34 | 5 | 17.2 |
| Assault with Less Serious Injury | 125 | 127 | 2 | 1.6 | 213 | 242 | 29 | 13.6 |
| Other Violence Against the Person | 321 | 412 | 91 | 28.3 | 578 | 681 | 103 | 17.8 |
| Racially-Aggravated Crime | 10 | 21 | 11 | 110.0 | 24 | 31 | 7 | 29.2 |

| | | | | | | | | |
|-----------------------|------|------|-----|------|------|------|------|-------|
| Anti-Social Behaviour | 1243 | 1184 | -59 | -4.7 | 1958 | 1763 | -195 | -10.0 |
|-----------------------|------|------|-----|------|------|------|------|-------|

| Outcomes | Last Year Cumulative | This Year Cumulative | Year on Year # Difference | Year on Year % Difference | Last Year Rolling 12M | This Year Rolling 12 M | Rolling 12M # Difference | Rolling 12M % Difference |
|-----------------------------------|----------------------|----------------------|---------------------------|---------------------------|-----------------------|------------------------|--------------------------|--------------------------|
| All Crime | 624 | 464 | -160 | -25.6 | 984 | 806 | -178 | -18.1 |
| Domestic Burglary incl. Attempts | 93 | 62 | -31 | -33.3 | 105 | 72 | -33 | -31.4 |
| Other Burglary incl. Attempts | 7 | 5 | -2 | -28.6 | 10 | 7 | -3 | -30.0 |
| Vehicle Crime excl. Inter'ce | 14 | 12 | -2 | -14.3 | 27 | 20 | -7 | -25.9 |
| Theft from Vehicles | 5 | 6 | 1 | 20.0 | 13 | 7 | -6 | -46.2 |
| Other Theft & Handling | 58 | 37 | -21 | -36.2 | 83 | 61 | -22 | -26.5 |
| Shoplifting | 104 | 67 | -37 | -35.6 | 169 | 137 | -32 | -18.9 |
| Criminal Damage | 45 | 35 | -10 | -22.2 | 78 | 54 | -24 | -30.8 |
| Robbery | 4 | 1 | -3 | -75.0 | 7 | 2 | -5 | -71.4 |
| Serious Violent Crime | 5 | 11 | 6 | 120.0 | 7 | 15 | 8 | 114.3 |
| Serious Sexual Crime | 7 | 11 | 4 | 57.1 | 9 | 15 | 6 | 66.7 |
| Assault with Less Serious Injury | 48 | 46 | -2 | -4.2 | 74 | 91 | 17 | 23.0 |
| Other Violence Against the Person | 131 | 154 | 23 | 17.6 | 228 | 270 | 42 | 18.4 |
| Racially-Aggravated Crime | 2 | 5 | 3 | 150.0 | 5 | 8 | 3 | 60.0 |

| Solved Rates % | Last Year Cumulative | This Year Cumulative | Year on Year % Point Difference | Last Year Rolling 12M | This Year Rolling 12 M | Rolling 12M % Point Difference |
|-----------------------------------|----------------------|----------------------|---------------------------------|-----------------------|------------------------|--------------------------------|
| All Crime | 28.93 | 23.26 | -5.7 | 25.21 | 23.47 | -1.7 |
| Domestic Burglary incl. Attempts | 33.57 | 27.93 | -5.6 | 18.72 | 16.78 | -1.9 |
| Other Burglary incl. Attempts | 6.67 | 4.03 | -2.6 | 4.59 | 3.50 | -1.1 |
| Vehicle Crime excl. Inter'ce | 4.02 | 3.87 | -0.2 | 4.39 | 3.62 | -0.8 |
| Theft from Vehicles | 1.89 | 2.65 | 0.8 | 2.77 | 1.75 | -1.0 |
| Other Theft & Handling | 19.33 | 11.53 | -7.8 | 15.17 | 12.06 | -3.1 |
| Shoplifting | 65.00 | 61.47 | -3.5 | 58.48 | 56.85 | -1.6 |
| Criminal Damage | 16.07 | 14.11 | -2.0 | 16.60 | 13.81 | -2.8 |
| Robbery | 36.36 | 8.33 | -28.0 | 24.14 | 9.09 | -15.0 |
| Serious Violent Crime | 45.45 | 52.38 | 6.9 | 41.18 | 44.12 | 2.9 |
| Serious Sexual Crime | 30.43 | 47.83 | 17.4 | 31.03 | 44.12 | 13.1 |
| Assault with Less Serious Injury | 38.40 | 36.22 | -2.2 | 34.74 | 37.60 | 2.9 |
| Other Violence Against the Person | 40.81 | 37.38 | -3.4 | 39.45 | 39.65 | 0.2 |
| Racially-Aggravated Crime | 20.00 | 23.81 | 3.8 | 20.83 | 25.81 | 5.0 |