

## Brentwood Public Meeting

29<sup>th</sup> April 2013

### Briefing information

Brentwood Police Station is open to the public Monday to Saturday from 12:00hrs to 18:00. Neighbourhood Crime Teams responsible for investigating a large proportion of local crime provide 24hr coverage of the borough.

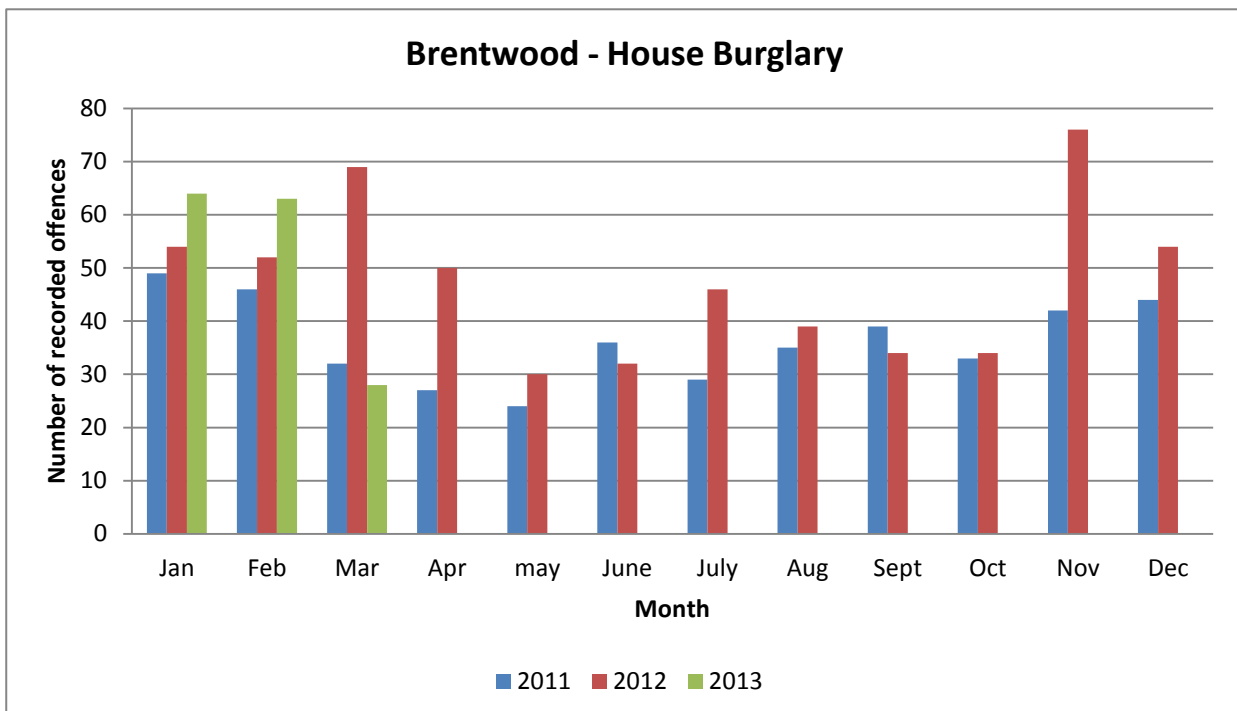
### Crime Data for Brentwood

Comparing reports for 1<sup>st</sup> April 2012 to 31<sup>st</sup> March 2013 with those from 1<sup>st</sup> April 2011 to 31<sup>st</sup> March 2012 the areas of note are as follows:

- All crime has reduced by 4.8% (212 fewer offences)
- Theft from Vehicles has increased by 7.9% (40 more offences)
- Theft and Taking Motor Vehicles has reduced by 10.4% (19 fewer offences)
- Burglary in a House has increased by 13.0% (63 more offences)
- Assault with Less Serious Injury has reduced by 20.1% (58 fewer offences)
- Anti-Social Behaviour Incidents have reduced by 15.1% (374 fewer incidents)

#### 1) Burglary

House Burglary offences in Brentwood have increased by 13% during the period 1<sup>st</sup> April 2012 to 31<sup>st</sup> March 2013 compared with the same period in the preceding 12 months.



Focused policing activity, in response to the sharp increase in house burglary offences late in 2012, has had a positive effect and the number of house burglaries has shown a large decrease at the beginning of this financial year.

Activity has included analysis to ensure the specific deployment of resources to 'hot spots', provision of bespoke crime prevention advice and working with partners and volunteers to promote deterrents under Operation Albatross.

### **Brentwood District - Burglary**

	<b>2011-12</b>	<b>2012-13</b>	<b>Change</b>	<b>% Change</b>
<b>House Burglary</b>	<b>485</b>	<b>548</b>	<b>63</b>	<b>13%</b>
This includes Car key burglaries	69	56	-13	-19%
<b>Burglary other than house</b>	<b>336</b>	<b>312</b>	<b>-24</b>	<b>-7%</b>
This includes:				
Commercial and Institutional Burglaries*	151	128	-23	-15%
Burglary of sheds and garages	131	118	-13	-10%

\* This includes companies, clubs, charities, schools and Government organisations

## **2) Night-Time Economy**

There is an active night-time economy with a variety of pubs and clubs in and around the town centre.

Members of the community have raised some concerns about a perceived increase in ASB, specifically in relation to the town centre and the night-time economy. In response to this a public meeting is to be held on 10<sup>th</sup> June 2013, with key leaders in the borough, to discuss and address these concerns.

Data shows that the number of recorded incidents of ASB was actually fewer last year against the number recorded the previous year.

The town partnerships have implemented a multi-agency approach to the Night Time Economy including Street Pastors, to ensure a safe environment for people to enjoy their nights out.

## **3) Speeding / Community Speedwatch**

Community Speed Watch was established within Essex Police in 2006 in response to communities highlighting excess vehicle speed as a continuing concern. The aim of Community Speed Watch is to address the problem of real and perceived speeding.

The scheme involves voluntary community groups monitoring vehicle speeds and in doing so notifying Essex Police of any vehicles travelling in excess of the speed limit. A letter is then sent to the registered keeper of the vehicle requesting that they respect the speed limit. Log sheets are also monitored to identify locations which may benefit from further police enforcement activity with all such results published on the Essex Police website.

The Brentwood area has an established Community Speed Watch group in Doddinghurst which has developed strong local links in supporting wider road safety initiatives. Other groups include Kelvedon Hatch, Ingrave/Herongate plus new community groups of Hutton and Shenfield.

In the past few months speedwatches have been carried out at Brentwood schools, including Warley County Primary, Hogarth County Primary, Ingrave Johnstone primary, Blackmore Primary, Doddinghurst Primary and Ingatestone and Fryerning primary.

The aim is for one check in the Brentwood area per month and they are already booked for the rest of this year.

**Your feedback is most welcome.**

Should you wish to contact the PCC about this meeting or any other matter please e-mail:

[pcc@essex.pnn.police.uk](mailto:pcc@essex.pnn.police.uk)

or write to:

Police and Crime Commissioner for Essex  
3 Hoffmanns Way  
Chelmsford, CM1 1GU

News alerts will usually be tweeted via the Essex PCC Twitter account:

<https://twitter.com/essexpcc>

You can learn more about the PCC's work at:

[www.essex.pcc.police.uk](http://www.essex.pcc.police.uk)

The neighbourhood policing teams will always act on intelligence received from the community. If you have information regarding any criminal activity please either call your local team or contact Crimestoppers on 0800 555 111. Crimestoppers is an anonymous line where you can report any criminal activity.