

Colchester Public Meeting

15th April 2013

Briefing information

Colchester Police Station is open to the public daily from 08:00hrs to midnight. It is the main operating base for policing the district with a 24 hour Neighbourhood Crime Team and officers dedicated to policing the town centre communities.

The Ipswich Road Police Station accommodates Neighbourhood Policing Team officers for areas north of Colchester town. The Neighbourhood Policing Team also has shared accommodation within three fire stations located at Tiptree, Wivenhoe and West Mersea.

The Garrison Police Station is a shared premises owned and operated by the armed forces where Essex Police officers work in partnership with the Royal Military Police and Ministry of Defence Police as a joint operating base.

Response and Patrol Officers are based at Stanway Police Station and include officers with road policing skills and dog handlers.

Crime Data for Colchester

Comparing reports for 1st March 2012 to 28th February 2013 with those from 1st March 2011 to 29th February 2012 the areas of note are as follows:

- Theft from Vehicles has reduced by 16.3% (132 fewer offences)
- Theft and Taking Motor Vehicles has reduced by 18.1% (36 fewer offences)
- Burglary in a House has increased by 44.9% (190 more offences)
- Other Theft and Handling has increased by 8.6% (110 more offences)
- Shoplifting has reduced by 22.4% (279 fewer offences)
- Assault with Injury has increased by 3.6% (38 more offences)
- Racially Aggravated Crime has reduced by 43.9% (36 fewer offences)

1) Knife crime

Over the year there has been a perceived increase in drug related violence and the use of knives as weapons, which has not been reflected in statistical data.

In the Colchester district, between April 2012 and February 2013, there were 42 offences where a person was found to be in possession of a knife or bladed article compared to 43 the previous year.

Across Essex, the number of serious offences involving knives, such as robberies, assaults and threats to kill, are down by 29% from April to December 2012, as compared with the same period in 2011. In Colchester district, such offences have reduced by 37 per cent, from 35 offences to 22.

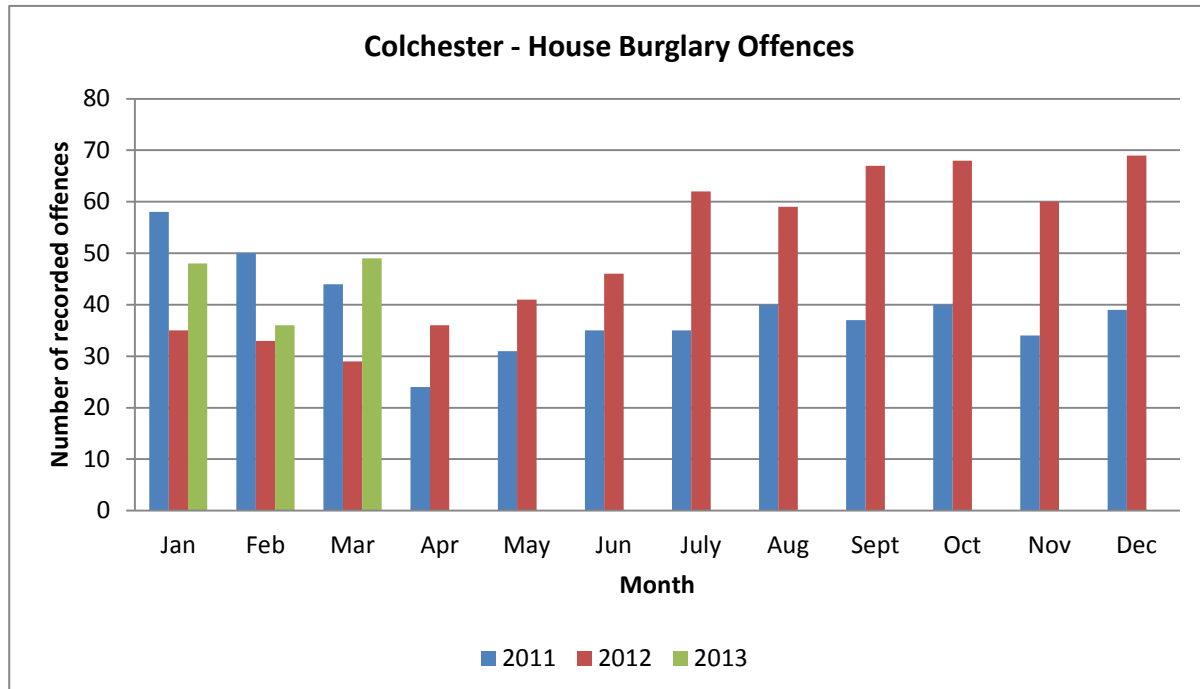
'Only Cowards Carry', KnifeCrimes.org and other anti-knife crime campaigns are undertaking excellent work to change attitudes of people to ensure they do not use or carry knives. This work is supported through the delivery of educational programmes in local schools by police youth officers.

To address any emerging problems in relation to knife crime and drugs an operation has been implemented in the Colchester district to collect information and intelligence and conduct activity around identified offenders.

The police also continue to work closely with partners from the local drug treatment agencies, the NHS and related charities, to share information and provide a multi-agency delivery of education and enforcement activities.

2) House Burglary

Burglary offences in Colchester have increased by over 40% during the period 1st March 2012 to 28th February 2013 compared with the same period in the preceding 12 months.



The force wide Operation Nemesis is aimed at targeting house burglary. In the Colchester district police have adapted operational activity to target both the identified offenders and the locations of highest incidence.

Since Christmas around 15 prolific burglars have been arrested and imprisoned as a result of tactics targeting offenders; house burglary rates have dipped significantly during this period

A series of offences in Tiptree targeted elderly people with key safes, stealing the keys by prising open the boxes and using them to enter their houses. The police devoted over 500 hours of patrol in the area, developed covert work and supported a partnership approach with the council and Social Services. This delivered a large scale door knocking campaign; ensured key safes were secured and arrested the offenders, resulting in the complete cessation of the problem.

Other identified areas of vulnerability include multi-occupancy student addresses, as students are often absent from the premises during the school holidays.

3) Night-Time Economy

Colchester one of the busiest, night-time venues in the county, with nearly 100 registered entertainment and licensed premises.

The town partnerships have implemented a multi-agency approach to the Night Time Economy including Street Pastors, the SOS Bus, regular joint patrols with the army and the use of local nightclub doormen to monitor taxi ranks to ensure a safe environment for people to enjoy their nights out.

The police undertake regular premises checks and in association with the council licensing teams interact with licencees (Pubwatch scheme). All door staff in the town are Security Industry Authority accredited and licenses are regularly scrutinised, as are any applications to extend hours.

Colchester has a working group, to which the police belong, to tackle the problem of people who abuse alcohol gathering and becoming a nuisance. Powers are exercised to prevent drinking in public places and the majority of Colchester town is now covered by a Designated Public Place Order. This empowers officers and PCSOs to seize alcohol and dispose of it, and enables police officers to disperse people they believe will engage in alcohol-related crime away from the town for a period of up to 48 hours. Return within that period will lead to their arrest. This has been an effective tool for dispersing problematic drinkers by day and preventing identified individuals causing problems through the night, by early intervention and dispersal.

An application has been made for Purple Flag accreditation for Colchester's night-time economy.

This scheme recognises town centres that are well-managed at night.

Your feedback is most welcome.

Should you wish to contact the PCC about this meeting or any other matter please e-mail:

pcc@essex.pnn.police.uk

or write to:

Police and Crime Commissioner for Essex
3 Hoffmanns Way
Chelmsford, CM1 1GU

News alerts will usually be tweeted via the Essex PCC Twitter account:

<https://twitter.com/essexpcc>

You can learn more about the PCC's work at:

www.essex.pcc.police.uk

The neighbourhood policing teams will always act on intelligence received from the community. If you have information regarding any criminal activity please either call your local team or contact Crimestoppers on 0800 555 111. Crimestoppers is an anonymous line where you can report any criminal activity.