

Rochford Public Meeting

28th March 2013

Briefing information

Rochford district is within the South Local Policing Area. The local police station is situated at Rayleigh, and is open between 0800 and midnight, seven days per week.

Rochford district has shown an all crime increase of 5.7% (150 more offences) when comparing reports between 1st March 2012 to 28th February 2013, against reports for 1st March 2011 to 29th February 2012.

1) Licensing and Night-Time Economy

Concerns have been raised by some members of the community and local councillors in Rayleigh regarding a perceived increase in licensed premises for the sale and consumption of alcohol.

Licences are granted by the local authority. The public, councillors and police may raise objections regarding the issue of licenses with the licensing authority. The authority may apply conditions to licences where appropriate. The police take a robust approach to the enforcement of any licensing conditions imposed on individual premises and adherence to the licensing principles.

The police work closely with partners, in particular liaising with licensees, and Rochford Community Safety Partnership (CSP) to ensure the district is safe for all. They are currently helping to support the implementation of a new 'Pubwatch' scheme. It is hoped that this will also lead to the use of the 'Behave or be Banned Scheme' which enables licensees to share information and ban offenders from participating licenced premises. This scheme is currently in place in Chelmsford.

There is an established operational plan to address the emerging night-time economy in Rayleigh. This utilises officers from the Neighbourhood Crime Team and the Special Constabulary to provide high-visibility police patrols at identified key locations.

2) Anti-social behaviour / Graffiti

Recorded incidents of anti-social behaviour (ASB) have risen by 16.9% (244 more incidents) this year compared to last. ASB incidents cover a broad range of incidents including noise, abandoned vehicles, graffiti, as well as ASB intentionally directed towards the person. It is thought that this rise is, in part, due to an increased willingness by the public to report such incidents.

Neighbourhood Policing Teams and Youth Officers work closely with our partners from the Community Safety Partnership to reduce incidents of ASB, including graffiti.

Individuals who have been identified as regularly causing ASB are challenged about their unacceptable behaviour. Anti-social behaviour contracts are utilised to set agreed boundaries for behaviour. These are closely monitored by Neighbourhood Officers. Recently, local officers have secured civil Anti-Social Behaviour Orders against three of the most serious and prolific offenders for crime-related ASB.

Concerns have been raised over the increase in the occurrence of graffiti tags¹ in the Rochford district. It appears that tags are being crossed out and derogatory messages sprayed alongside or over the original piece.

Removing graffiti quickly is the best prevention as 'taggers' want their work to be seen. The matter has been raised with Chamber of Trade and a number of retail outlets have responded and cleaned their buildings.

3) Shoplifting

There has been a rise in reported shoplifting in the Rochford area of 82.8% (111 more offences) when comparing reports between 1st March 2012 to 28th February 2013, against reports for 1st March 2011 to 29th February 2012.

There is a current policing operation in response to the increase in shoplifting offences. Essex police and the Community Safety Partnership are committed to promoting closer partnership working between retailers, the Council and local police to combat this crime.

It is not unusual for prolific shoplifters from other areas to visit Rochford, where they are less known, with the intention of committing shoplifting offences. A number of stores are sharing intelligence regarding known shoplifters with the police. Wherever possible, PCSOs are asked to regularly enter key stores to show a uniformed presence and deter criminal activity.

4) Vehicle crime

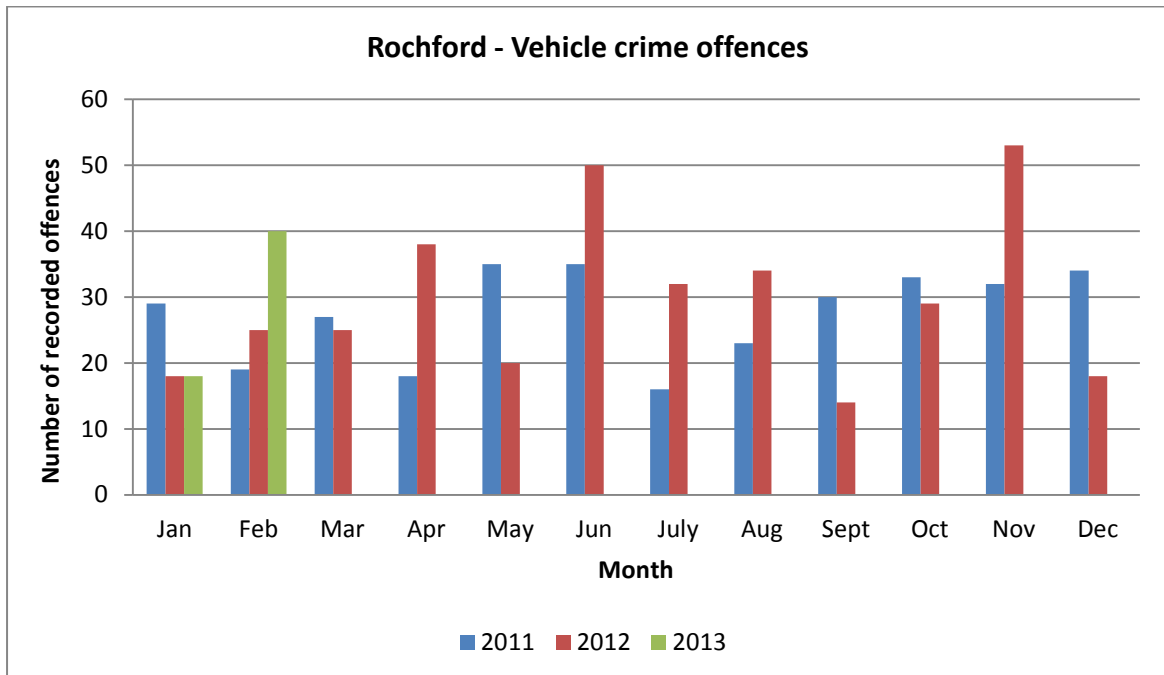
Vehicle offences in the Rochford district have seen an increase when comparing reports for 1st March 2012 to 28th February 2013, against reports for 1st March 2011 to 29th February 2012. Theft from Vehicles showed an increase of 29.2% (62 more offences) and Theft and Taking Motor Vehicles increased by 17% (15 more crimes).

Theft from vehicle contributes a large proportion of the offences which make up all vehicle crime. The offence of theft from vehicles has proved particularly challenging to reduce due to the opportunistic nature of the crime.

Many offences of theft from motor vehicle could be avoided by simply securing vehicles and removing valuable items or items of temptation.

¹ Form of visual communication, usually illegal, involving the unauthorized marking of public space by an individual or group.

Vans and 4x4s are more at risk of catalytic convertor theft as they are higher off the ground providing easy access to the underside of the vehicle. However any vehicle is a potential target with the increase in metal thefts around the UK. Marking kits are available on the internet and combined with visible stickers act as a deterrent.



Incidents of vehicle crime are monitored closely on a daily basis and the police respond to any emerging trends or patterns with bespoke policing operations and additional targeted patrols are used where hotspots are identified.

Regular crime reduction advice to prevent vehicle crime is promoted through Neighbourhood Watch and the media.

Your feedback is most welcome.

Should you wish to contact the PCC about this meeting or any other matter please e-mail: pcc@essex.pnn.police.uk or write to:

Police and Crime Commissioner for Essex
3 Hoffmanns Way
Chelmsford, CM1 1GU

News alerts will usually be tweeted via the Essex PCC Twitter account: <https://twitter.com/essexpcc>

You can learn more about the PCC's work at: www.essex.pcc.police.uk

The neighbourhood policing teams will always act on intelligence received from the community. If you have information regarding any criminal activity please either call your local team or contact Crimestoppers on 0800 555 111. Crimestoppers is an anonymous line where you can report any criminal activity.