

Briefing information

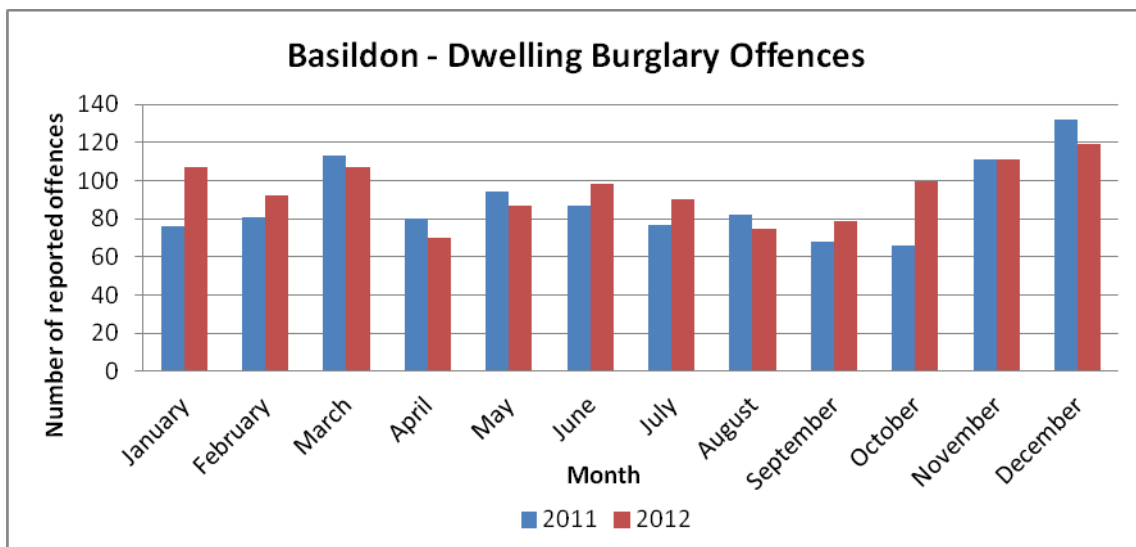
The Basildon district has shown an all crime reduction of 10.7% (1058 fewer offences) so far this financial year. This is welcomed following an increase in all crime during the 2011/12 previous year.

Community Safety Action Zones (CSAZ) are set up in different areas across the borough for a specific period of time, during which representatives from different agencies engage with residents and other members of the community to discuss local concerns in the area in relation to crime and anti-social behaviour (ASB).

1) Dwelling Burglary and Vehicle Crime

Contrary to public perception, burglary is a relatively infrequent crime in the Basildon district. 823 of the 70,000 households in the area experienced a burglary between 1st April and 31st December 2012.

The facts are that burglary offences in the district have increased by 4.1% (32 more offences) between 1st April and 31st December 2012 against the same period in 2011, though, this increase is significantly lower than for the rest of the county. During the same period, the force-wide increase was 14.4%.



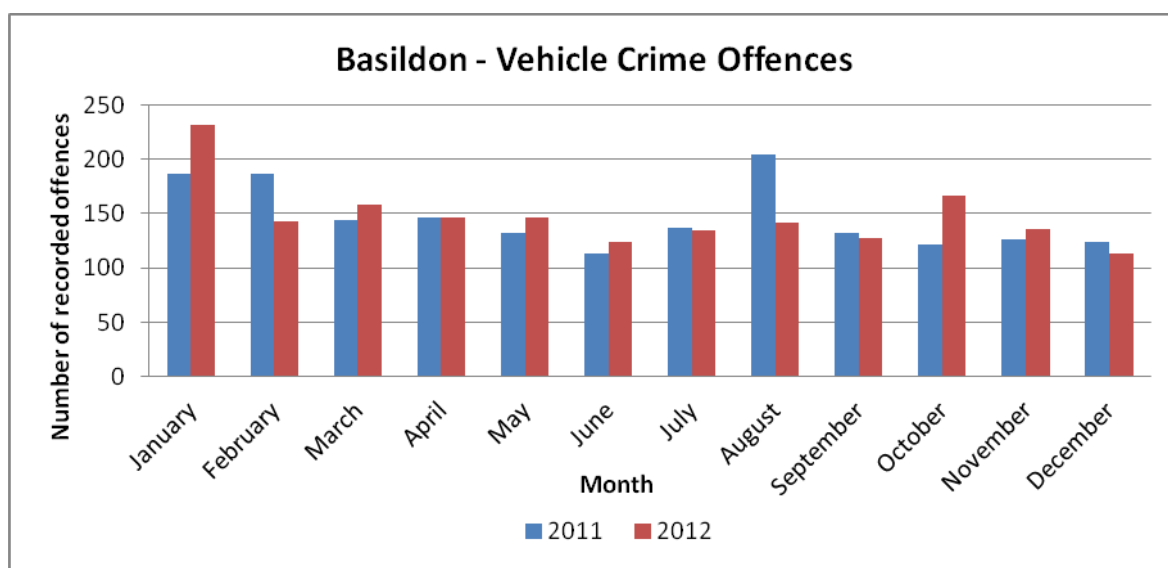
To address burglary offences an operation that focuses on known offenders has been implemented. Every day actionable intelligence is reviewed and high visibility policing is prioritised in the most affected areas of the district. The success of the operation is measured by crime reduction, arrests and by the response of the people who have been affected by burglary.

A joint campaign launched by Essex Police and Essex County Council on January 28th 2013, focuses on burglary and theft from vehicles and urges Essex residents to take simple precautions to safeguard their property to prevent them from falling foul of opportunistic criminals.

The campaign further enforces the work being undertaken by Essex Police, seeking to bring burglars to justice and prevent further offences occurring. For example Operation Brightshadow follows prolific offenders and works with them in an effort to bring their offending down.

Burglaries can occur at any time of day and night. Many burglars gain entry through a rear door or insecure windows. It is important that the public continue to maintain a high standard of home security and don't leave their house and car keys on display.

Vehicle crime includes theft from motor vehicles and theft of motor vehicles. The number of offences between 1st April and 31st December 2012 showed little change against the same period in 2011 for both offences.



Neighbourhood officers patrol the wards and will stop any persons or vehicles acting in a suspicious manner. Please be mindful of leaving items unattended in your vehicles and remember to secure your vehicle when not in use.

Theft from motor vehicles also includes the theft of tools from vans. Those with work vans should remove the tools from inside at night. Stickers are available from the police station stating "no tools kept in vehicle".

Car parks with 'Park Mark' status have been certified as meeting minimum standards in layout and design, lighting, surveillance and controlled entry and exit. Although it is not a guarantee of safety, figures show parking in a secured car park reduces the chances of vehicle crime by 70 %.

Community intelligence is key to successfully addressing burglary and vehicle crime. Please pass information direct into Essex Police or via Crime Stoppers on 0800 555 111.

2) Drug dealing.

During the past year, the misuse of drugs and the impact of the use and supply of drugs on the wider community have been highlighted as causing concern. Partnership

resources have been invested in this area and new police operations have commenced to investigate drug use and supply across the district.

There is strong proactive police action against organised crime gangs operating above the street level dealers. A recent successful operation resulted in 49 individuals being charged for drugs related offences.

This police activity was triggered by the rise in violence associated with individuals within an organised crime group. Officers from the Serious Crime Directorate work alongside local officers from the neighbourhood teams.

Essex Police act on all information received regarding the whereabouts of drug related activity, and continue to combat this crime which is so often linked to many other types of serious offence. Please contact Basildon Police or Crimestoppers on 0800 555 111 to tell us about any concerns you may have regarding any type of drug activity in your area.

3) Felmores

Felmores is classified as an 'Approved Premises' which is accommodation for a wide range of offenders, where there could be a heightened risk to the public. Offenders staying at Approved Premises have usually been ordered to do so as part of their release from prison, but might also be ordered to stay there as a condition of bail or a Community Order. Felmores provides structured accommodation for 26 people, 90% of whom are on custodial licence, with the remainder on community sentence.

The residents are overseen by Approved Premises staff and must comply with the conditions of their sentence at all times, including observation of a strict curfew. The building is covered by a comprehensive CCTV system, offering complete coverage of the premises, including all entry/ exit points.

The staff are in regular close contact with the dedicated local Neighbourhood Policing officers, including the Public Protection Unit, and any offenders who after assessment cause concern to staff, are referred to the local Multi-Agency Public Protection Arrangements (MAPPA). This allows even closer supervision of the more dangerous offenders.

Without Approved Premises, dangerous offenders would be released from prison at the end of their sentence with no supervision or monitoring. Lapses in behaviour from the offenders would not be picked up and the public would be at greater risk. As part of MAPPA, the police will share relevant information on dangerous offenders with the local Head Teachers.

4) Police and Crime Plan

The Police and Crime Plan for Essex will play a crucial part in delivering the objective of reducing crime in our county.

The Plan sets out the expectation that the delivery of policing services is effectively matched to meet local district level needs, while balancing those regional and national

policing demands, such as major organised crime and terrorism. It also includes the broader role of the PCC in bringing together the police, public and wider partners to cut crime and keep communities safe.

The PCC would like to hear your views and observations on the draft Police and Crime Plan. Copies of the plan are available upon request. Please see a member of the PCC staff at this meeting if you would like one.

The emerging four-year draft Plan is also available on the PCC website

<http://www.essex.pcc.police.uk/2013/01/the-draft-police-and-crime-plan-for-essex/>

Please read the document and provide your views

At email address: pccplanconsultation@essex.pnn.police.uk
or by writing to:

PCC Nick Alston
3 Hoffmanns Way
Chelmsford, CM1 1GU

The revised draft Plan will be submitted to the Police and Crime Panel on 14th February 2013, for their review at the meeting of 21st February. Your views are valued and will be strongly considered as we revise and write the final version of the Plan.

Your feedback is most welcome. Should you wish to contact the PCC about this meeting or any other matter please e-mail : pcc@essex.pnn.police.uk

The neighbourhood policing teams will always act on intelligence received from the community. If you have information regarding any criminal activity please either call your local team or contact Crimestoppers on 0800 555 111. Crimestoppers is an anonymous line where you can report any criminal activity